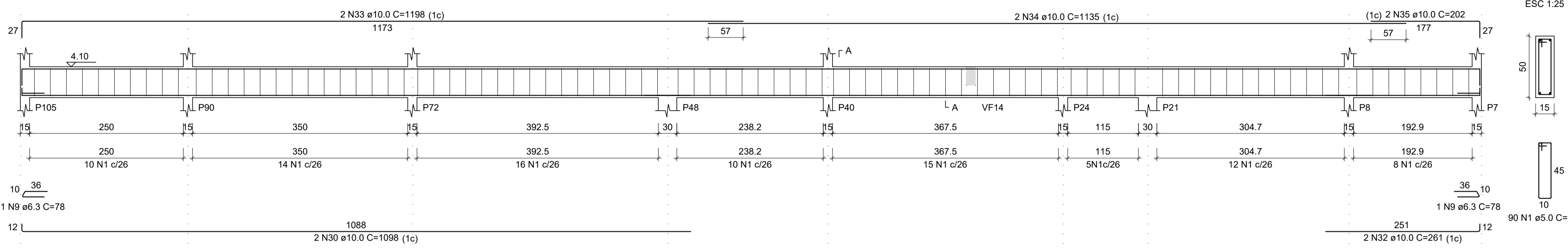
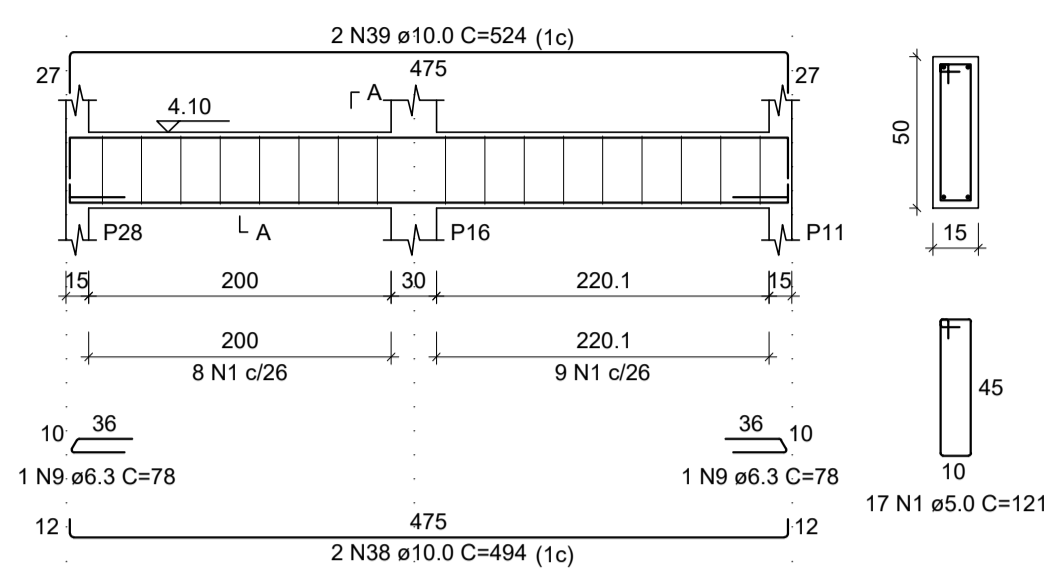


VF64
ESC 1:50



VF76
ESC 1:50



RELAÇÃO DO AÇO

VF64	VF69	VF73
VF74	VF76	VF77
VF78	VF79	VF80
VF81	VF82	VF83
VF84	VF85	VF86
VF87	VF88	VF89

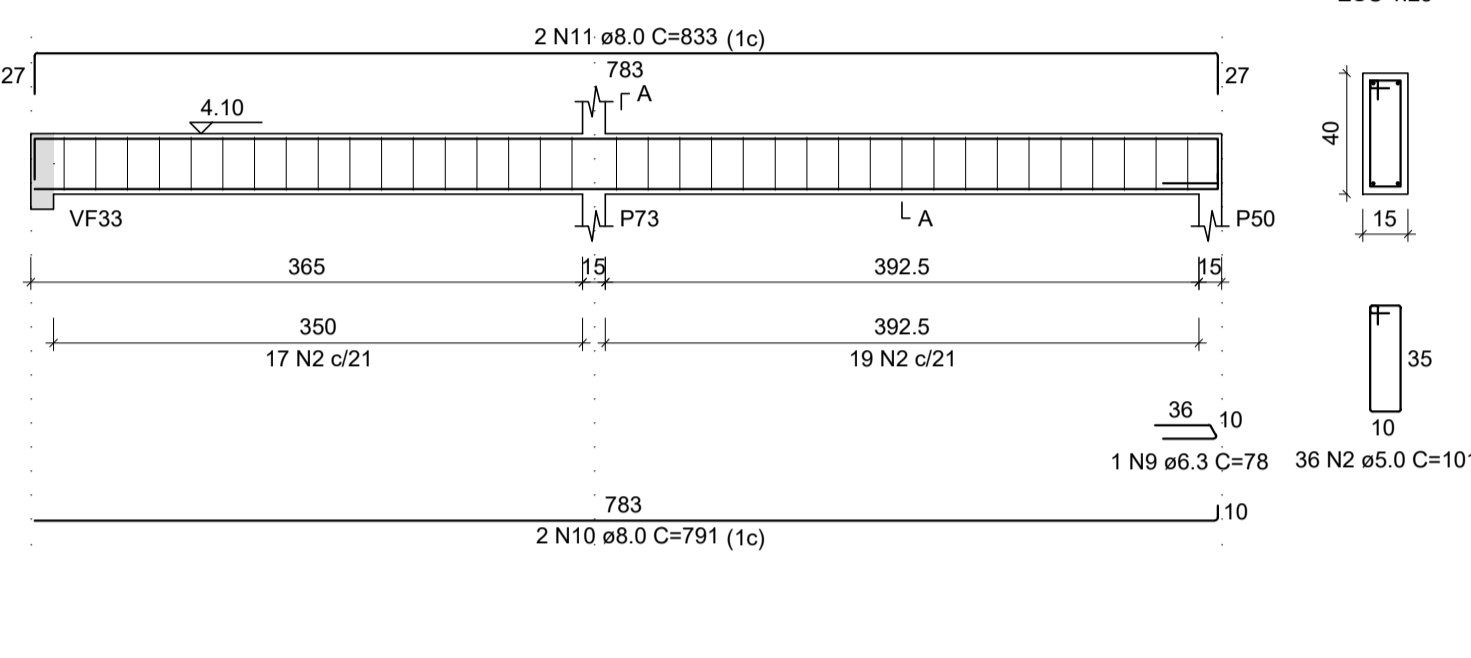
AÇO	N	DIAM (mm)	QUANT	C.UNIT (cm)	C.TOTAL (cm)
CA60	1	5.0	123	121	14883
CA60	2	5.0	344	101	34744
CA60	3	5.0	225	20	450
CA60	4	5.0	34	81	2754
CA60	5	5.0	2	164	328
CA60	6	5.0	2	255	510
CA60	7	5.0	2	175	350
CA60	8	5.0	2	215	430
CA50	9	6.3	14	78	1092
CA50	10	8.0	2	791	1582
CA50	11	8.0	2	833	1666
CA50	12	8.0	2	810	1620
CA50	13	8.0	1	377	377
CA50	14	8.0	2	318	636
CA50	15	8.0	2	691	1322
CA50	16	8.0	2	694	1388
CA50	17	8.0	4	526	2104
CA50	18	8.0	2	88	176
CA50	19	8.0	2	280	560
CA50	20	8.0	2	232	464
CA50	21	8.0	2	88	176
CA50	22	8.0	4	140	560
CA50	23	8.0	4	454	1816
CA50	24	8.0	4	488	1952
CA50	25	8.0	2	446	892
CA50	26	8.0	2	160	320
CA50	27	8.0	2	305	610
CA50	28	8.0	4	518	2072
CA50	29	8.0	4	568	2272
CA50	30	10.0	2	1098	2196
CA50	31	10.0	2	1183	2366
CA50	32	10.0	2	261	522
CA50	33	10.0	2	1198	2396
CA50	34	10.0	2	1135	2270
CA50	35	10.0	2	202	404
CA50	36	10.0	2	457	914
CA50	37	10.0	2	953	1906
CA50	38	10.0	2	494	988
CA50	39	10.0	2	524	1048
CA50	40	10.0	2	198	396
CA50	41	10.0	2	438	876
CA50	42	10.0	2	226	452
CA50	43	10.0	2	528	1056
CA50	44	10.0	2	196	392
CA50	45	10.0	2	193	386
CA50	46	10.0	2	220	440
CA50	47	10.0	2	195	390
CA50	48	10.0	2	239	478
CA50	49	10.0	2	300	600
CA50	50	12.5	3	478	1434
CA50	51	12.5	1	275	275
CA50	52	12.5	5	521	2605

RESUMO DO AÇO

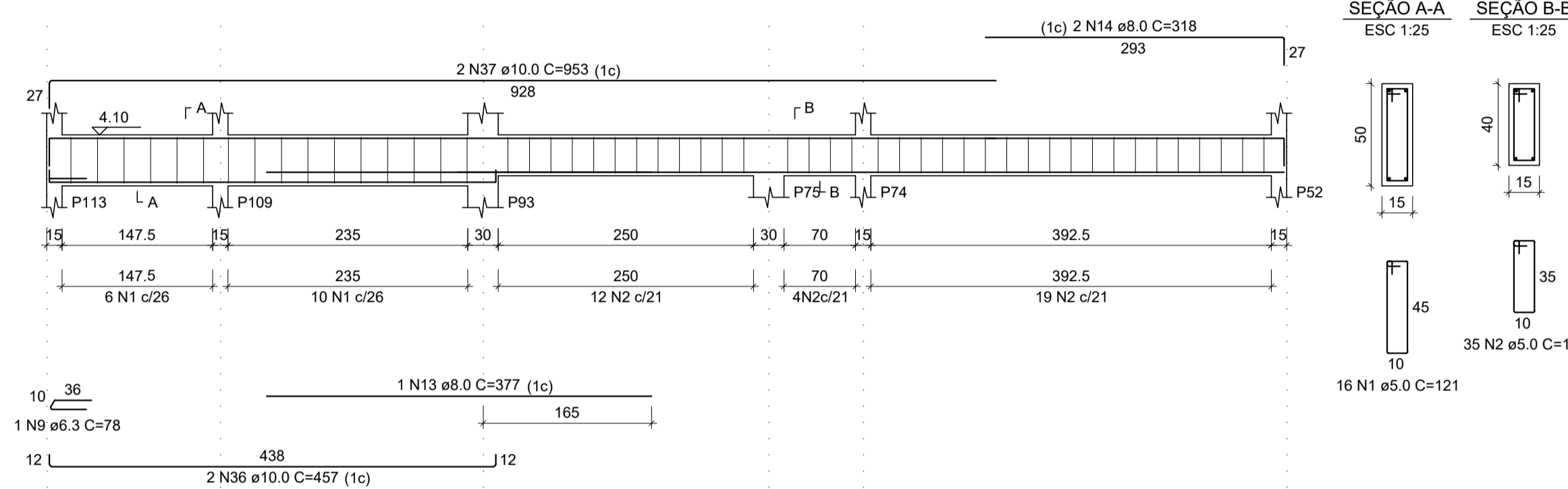
AÇO	DIAM (mm)	C. TOTAL (m)	QUANT + 10% (Barras)	UNIT	PESO + 10% (kg)
CA50	6.3	10.9	2	12 m	2.9
CA50	8.0	236.2	22	12 m	102.5
CA50	10.0	204.8	19	12 m	138.9
CA50	12.5	43.1	4	12 m	45.7
CA60	5.0	544.5	-	rolo (170 kg)	92.3
PESO TOTAL (kg)					
CA50		290			
CA60		92.3			

Volume de concreto (C-25) = 7.20 m³
Área de forma = 112.90 m²

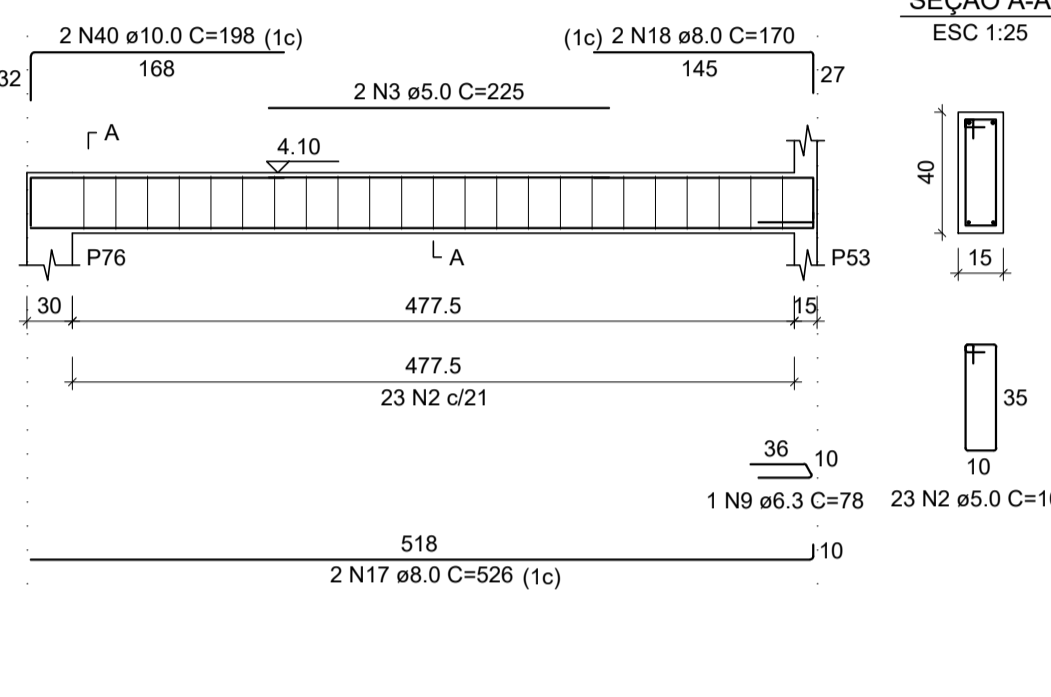
VF69
ESC 1:50



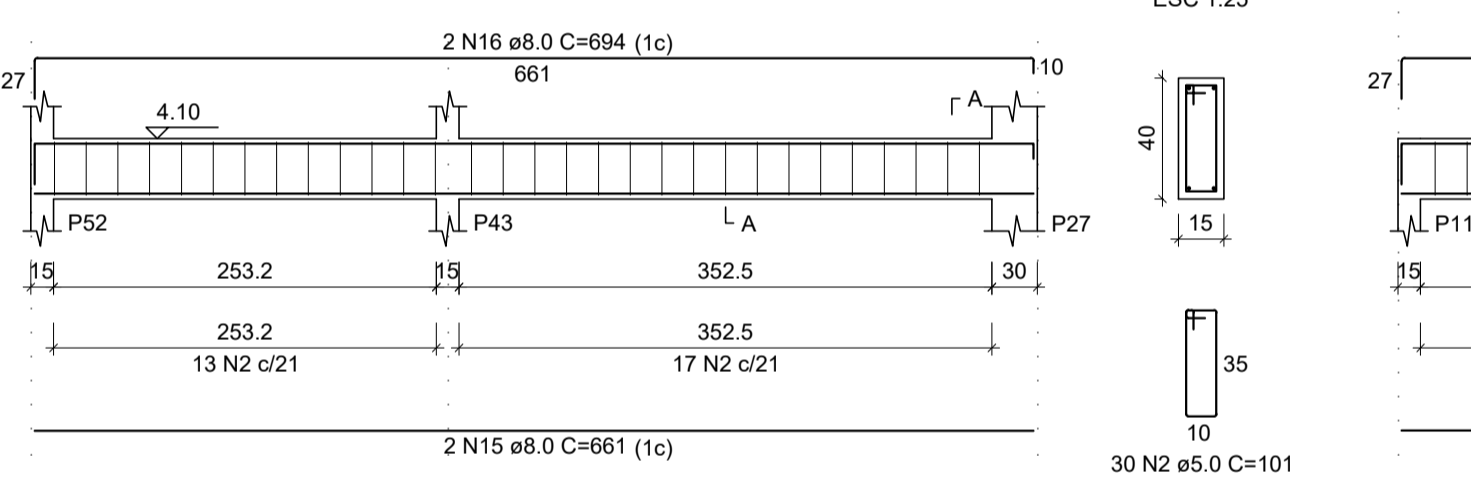
VF73
ESC 1:50



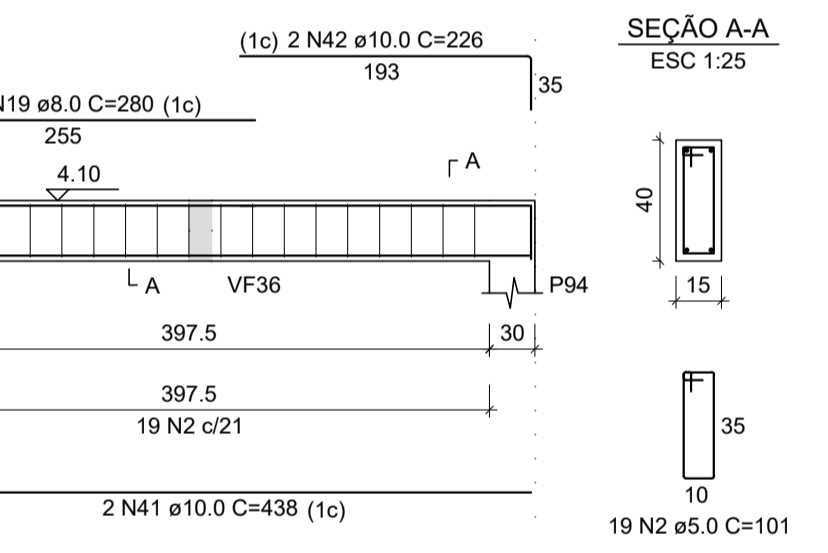
VF77
ESC 1:50



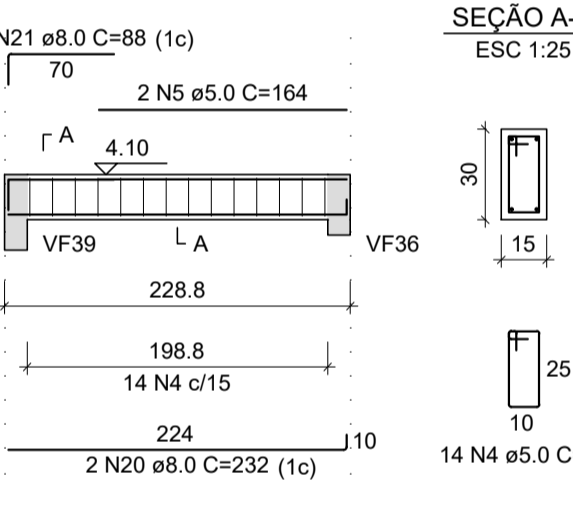
VF74
ESC 1:50



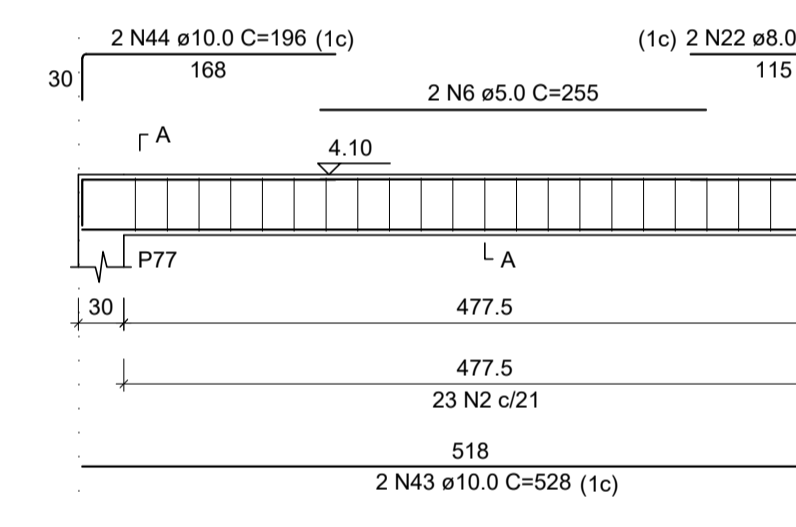
VF78
ESC 1:50



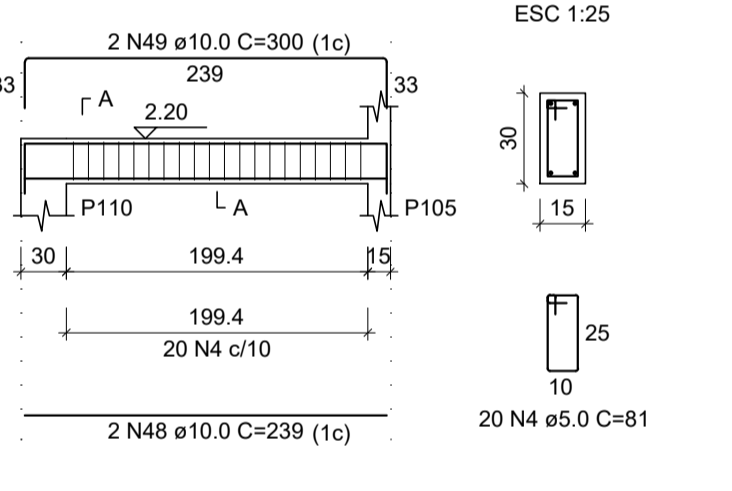
VF79
ESC 1:50



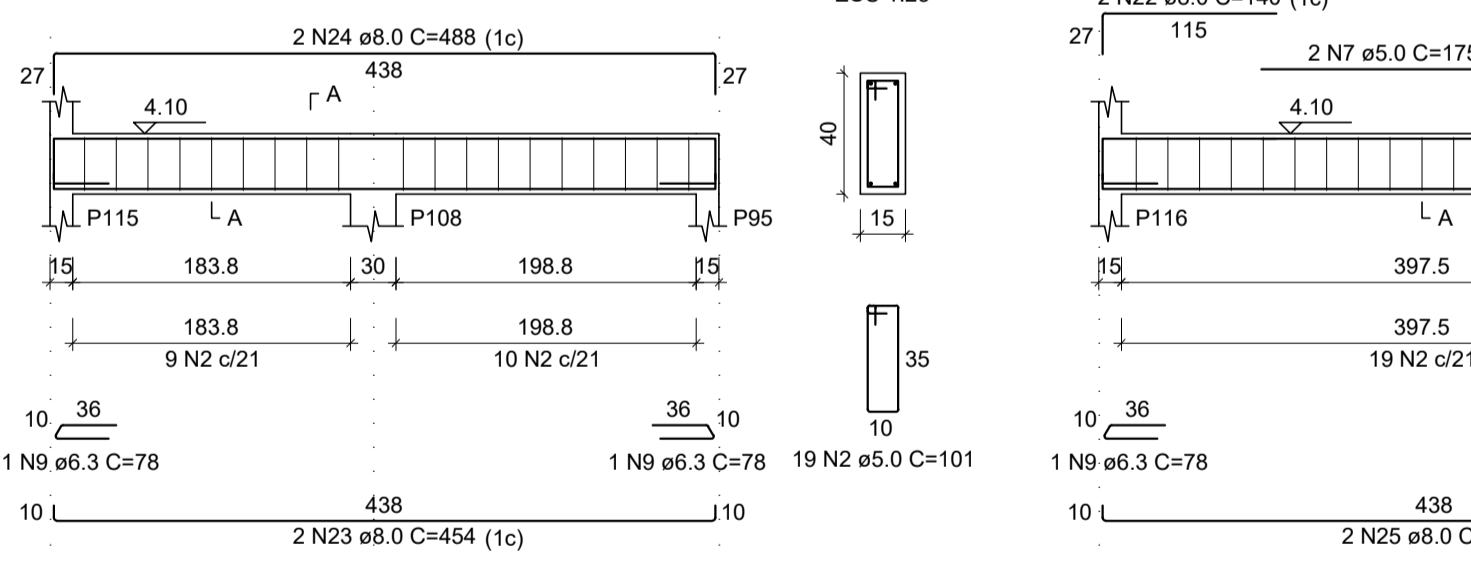
VF80
ESC 1:50



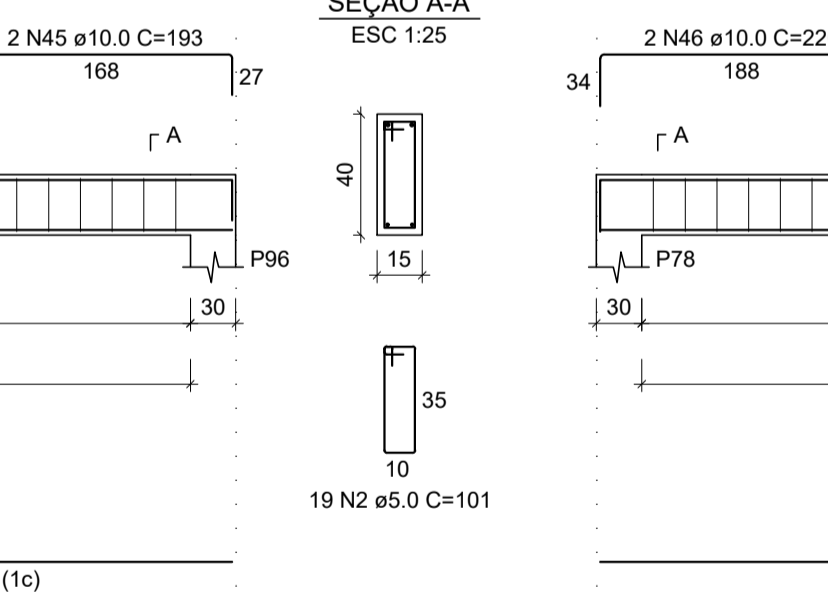
VF98
ESC 1:50



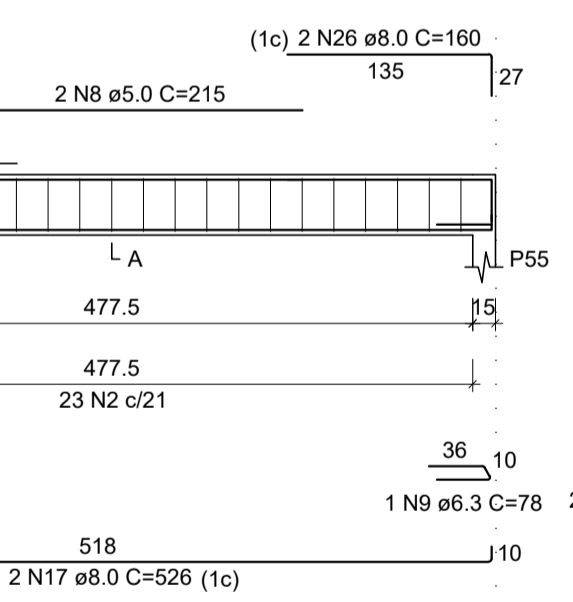
VF81
ESC 1:50



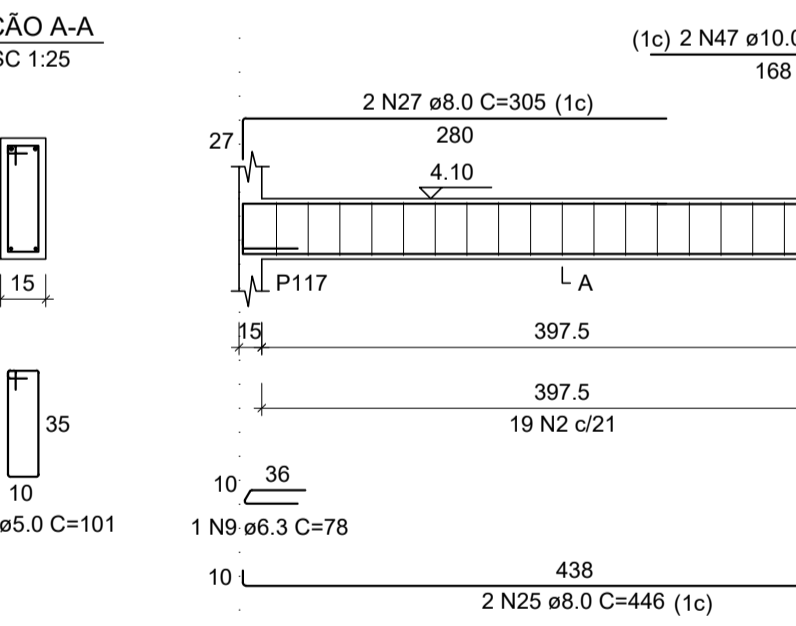
VF82
ESC 1:50



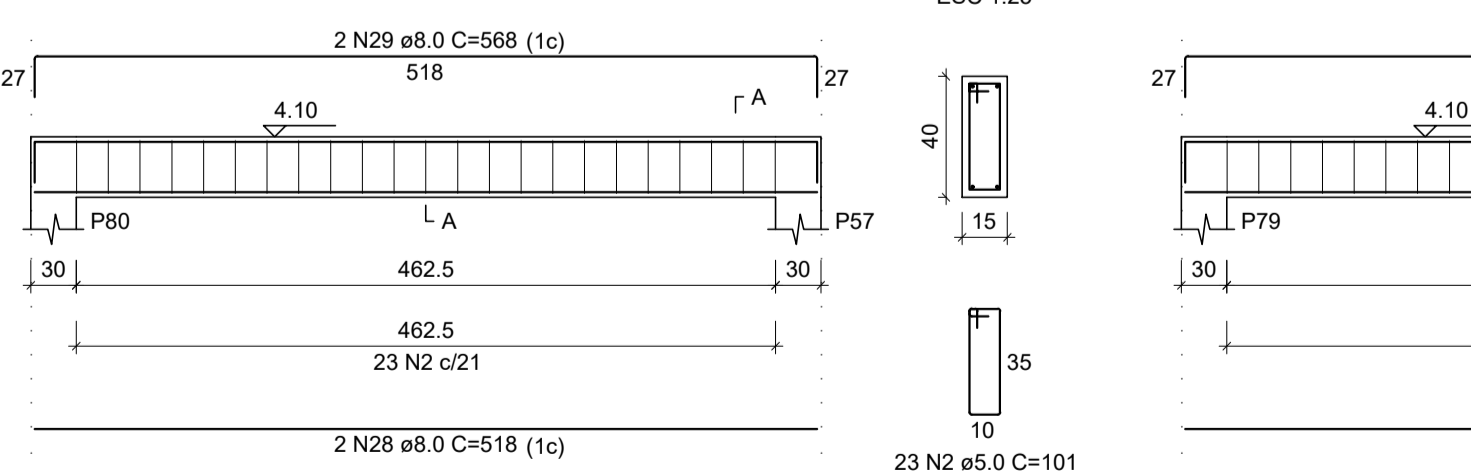
VF83
ESC 1:50



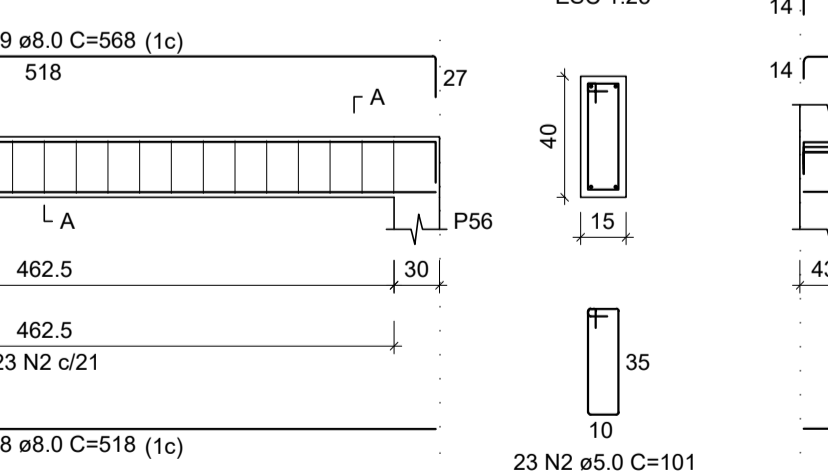
VF84
ESC 1:50



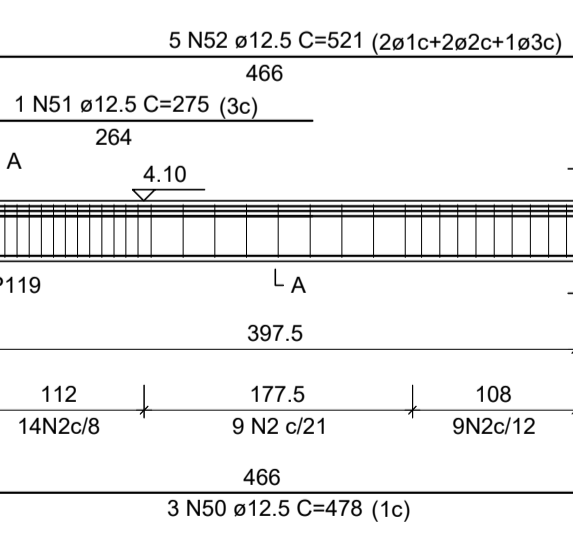
VF85
ESC 1:50



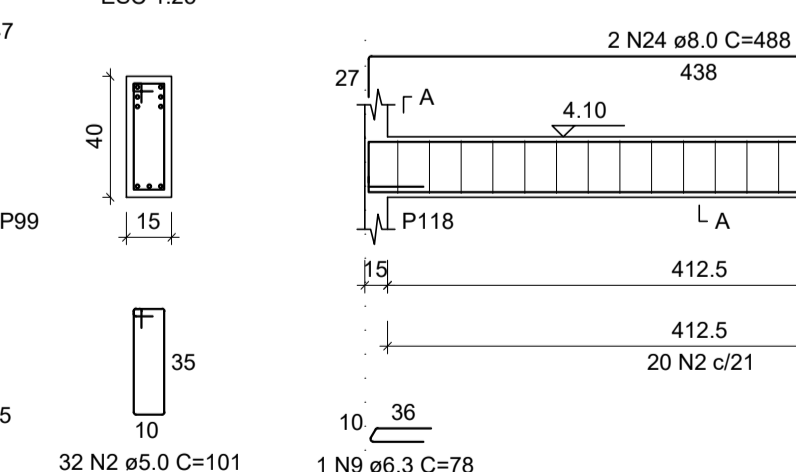
VF86
ESC 1:50



VF87
ESC 1:50



VF88
ESC 1:50



REV. 00	13/04/20	EMISSÃO INICIAL	DAC
REVISÃO:	DATA :	DESCRIÇÃO:	RESP.:



 Rua Miguel Vianna, nº 81, Sala 12 Bairro Morro Chic CEP: 37500-080 - Itajubá / MG Tel: (35) 3623-5720 www.dacengenharia.com.br	GERÊNCIA DE PROJETOS	DENIS DE SOUZA SILVA	CREA: MG-127.216/D
	COORDENAÇÃO DE PROJETOS	ALDOISO CAETANO FERREIRA	CREA: MG-97.132/D
	RESPONSÁVEL TÉCNICO	ENGR. CIVIL FLÁVIA C. BARBOSA	CREA: MG-187.842/D
	DESENHO	WILLIAM BARADEL LARI	

EMPRESAMENTO	IMPLANTAÇÃO DO CEMAPA E CENTRO POP	
ENDEREÇO	RUA PROJETADA, BAIRRO SANTA CECÍLIA POUSO ALEGRE - MINAS GERAIS	DISCIPLINA ESTRUTURAL
ASSUNTO	PROJETO ESTRUTURAL DE CONCRETO ARMADO FORMAS E FERRAGENS VIGAS	FASE DO PROJETO EXECUTIVO
		FOLHA Nº. 24/28