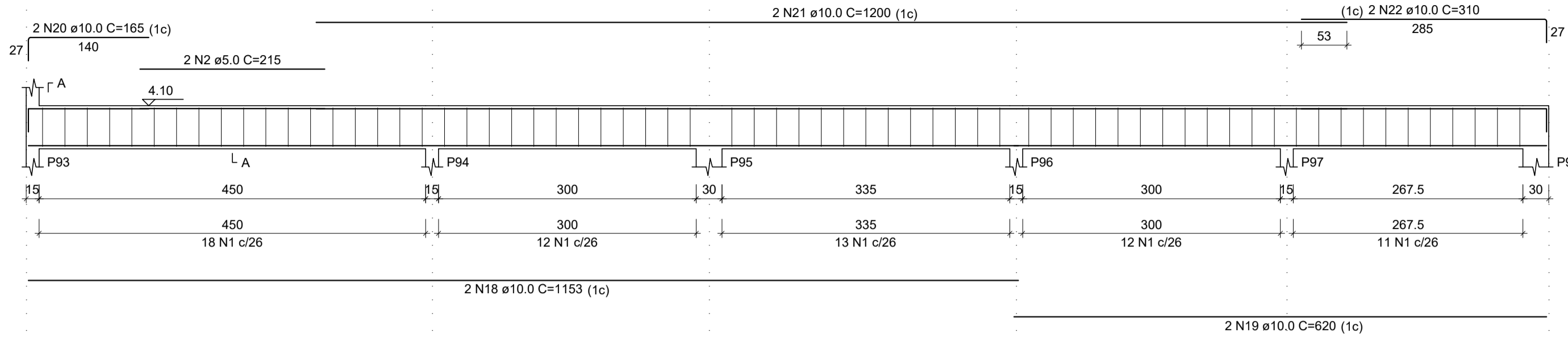
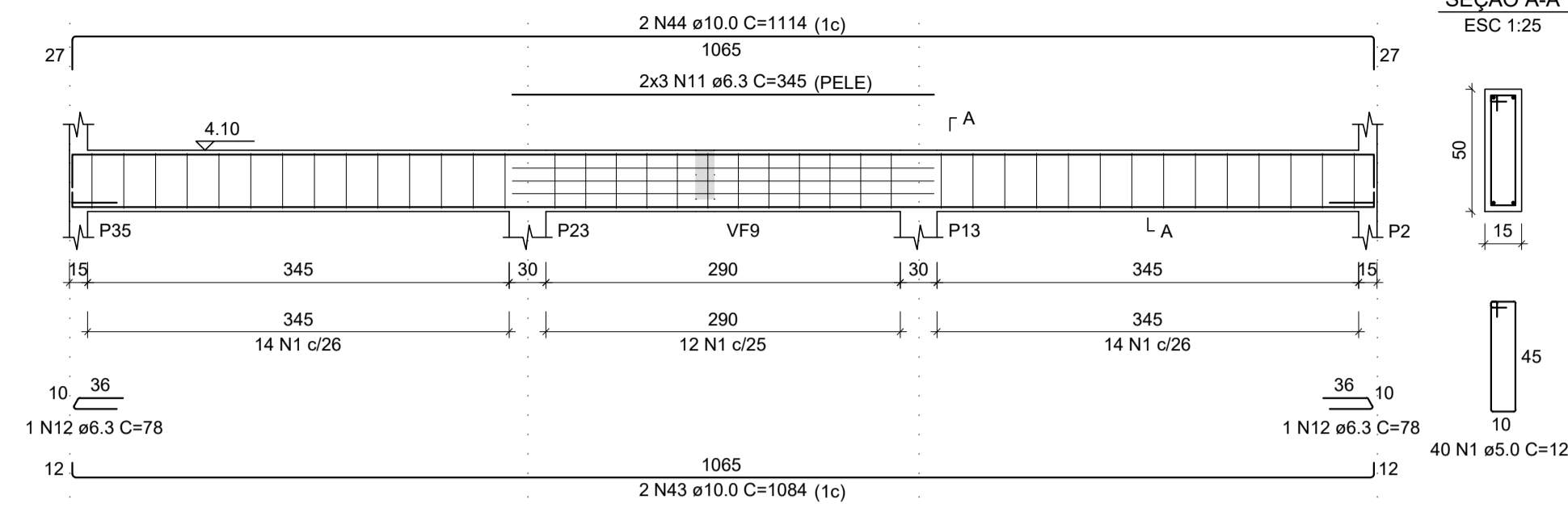


VF34
ESC 1:50



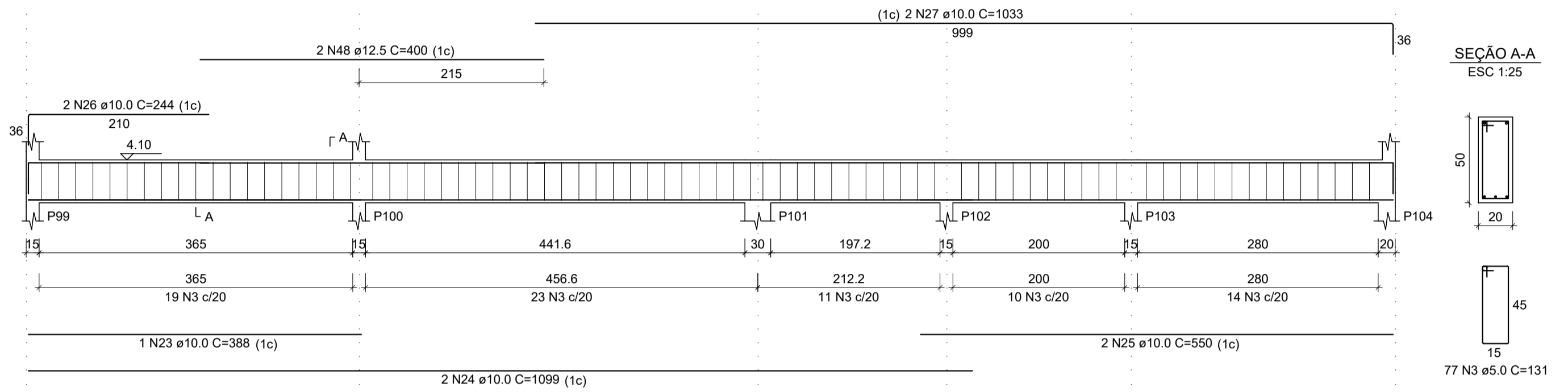
VF51
ESC 1:50



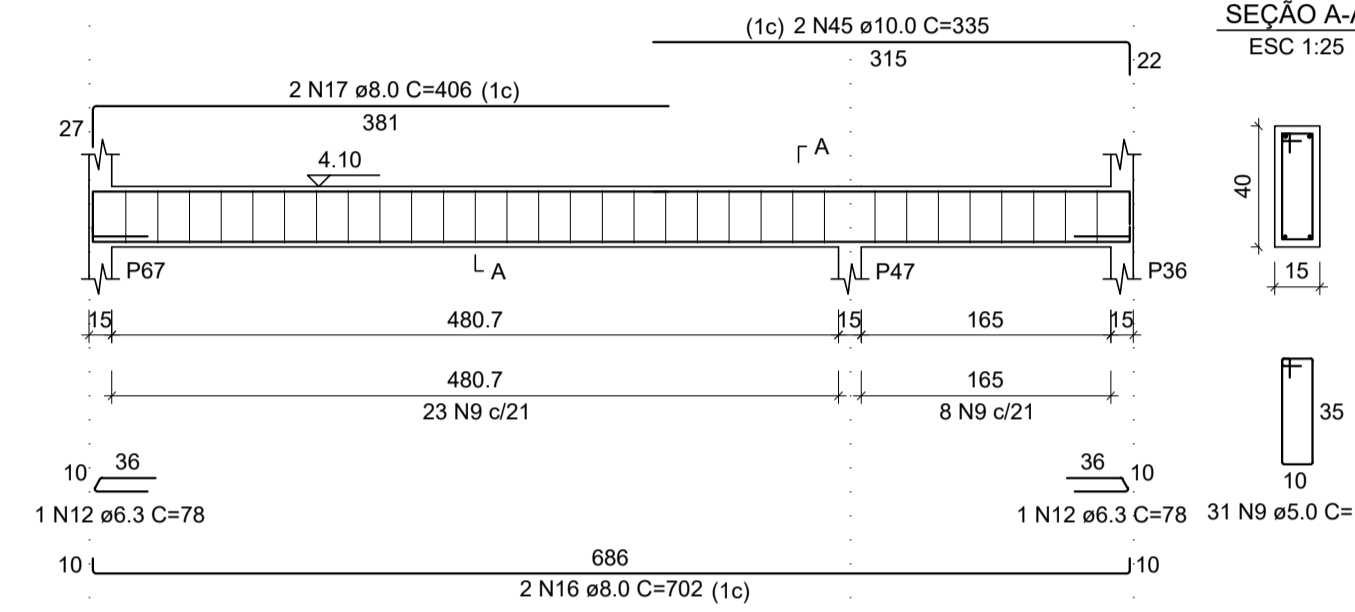
RELAÇÃO DO AÇO

AÇO	N	DIAM (mm)	QUANT	C.UNIT (cm)	C.TOTAL (cm)
CA60	1	5.0	409	121	49489
	2	5.0	2	215	430
	3	5.0	77	131	10087
	4	5.0	4	80	320
	5	5.0	2	370	740
	6	5.0	2	213	426
	7	5.0	2	368	736
	8	5.0	2	278	556
	9	5.0	31	101	3115
	10	6.3	6	475	2850
	11	6.3	6	345	2070
	12	6.3	6	78	468
	13	8.0	2	254	508
	14	8.0	2	319	638
	15	8.0	2	314	628
	16	8.0	2	702	1404
	17	8.0	2	406	812
	18	10.0	2	1153	2306
	19	10.0	4	620	2480
	20	10.0	2	165	330
	21	10.0	4	1200	4800
	22	10.0	2	310	620
	23	10.0	1	388	388
	24	10.0	2	1099	2198
	25	10.0	2	550	1100
	26	10.0	2	244	488
	27	10.0	2	1033	2066
	28	10.0	2	1138	2276
	29	10.0	2	622	1244
	30	10.0	4	106	424
	31	10.0	2	650	1300
	32	10.0	4	598	2392
	33	10.0	2	648	1296
	34	10.0	4	130	520
	35	10.0	2	677	1354
	36	10.0	2	1090	2180
	37	10.0	2	173	346
	38	10.0	2	198	396
	39	10.0	2	370	740
	40	10.0	2	350	700
	41	10.0	2	395	790
	42	10.0	2	148	296
	43	10.0	2	344	688
	44	10.0	2	1114	2228
	45	10.0	2	335	670
	46	10.0	2	344	688
	47	10.0	2	374	748
	48	12.5	2	400	800
	49	12.5	2	395	790
	50	12.5	2	420	840
	51	12.5	6	593	3558
	52	12.5	2	280	560
	53	12.5	5	635	3175
	54	12.5	1	324	324
	55	12.5	4	666	2664

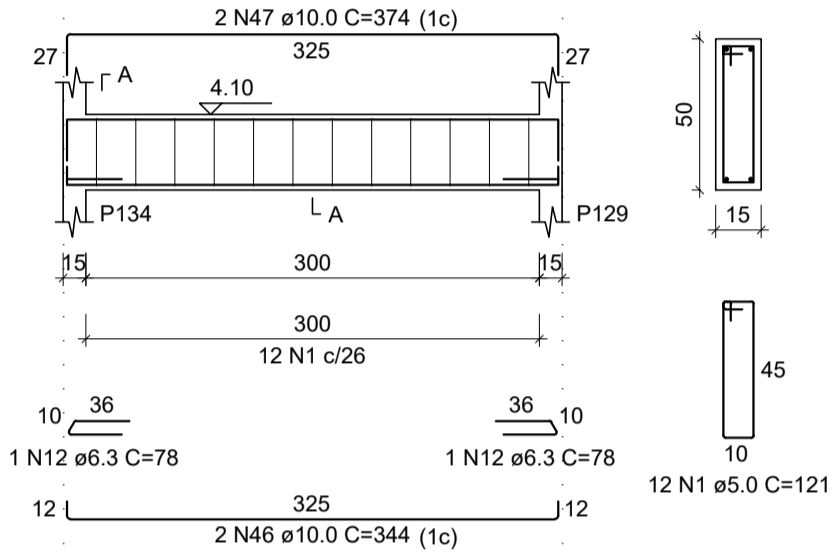
VF35
ESC 1:50



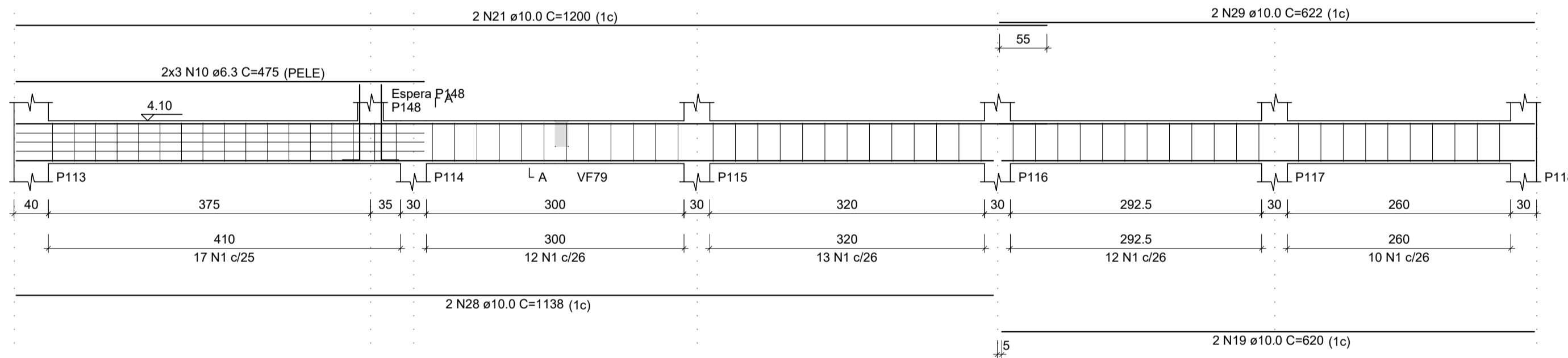
VF52
ESC 1:50



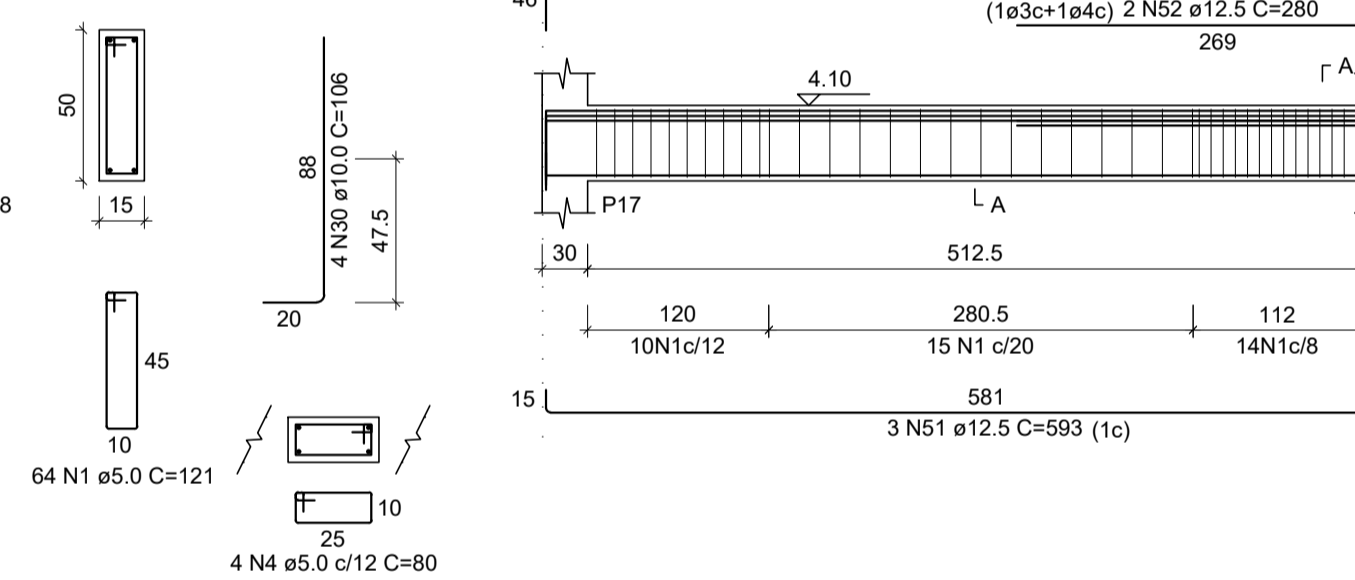
VF63
ESC 1:50



VF39
ESC 1:50



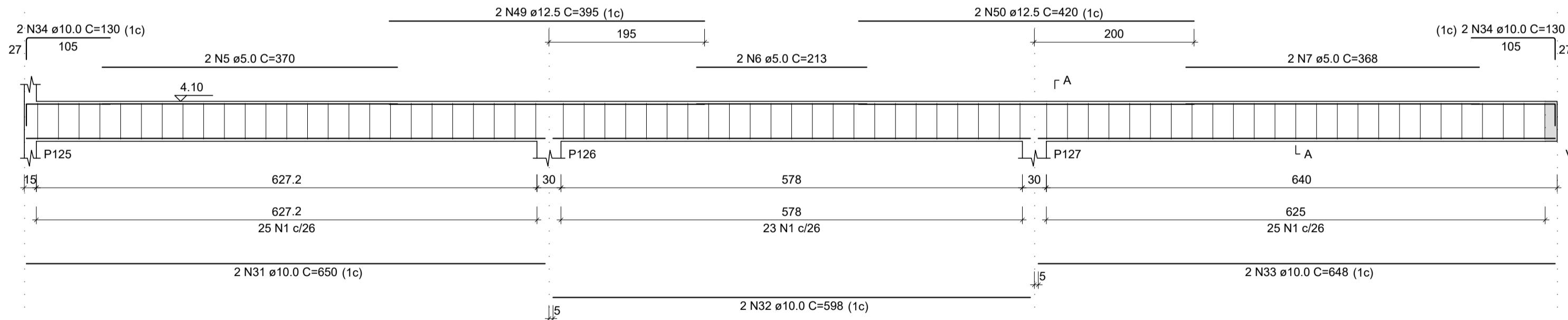
VF54
ESC 1:50



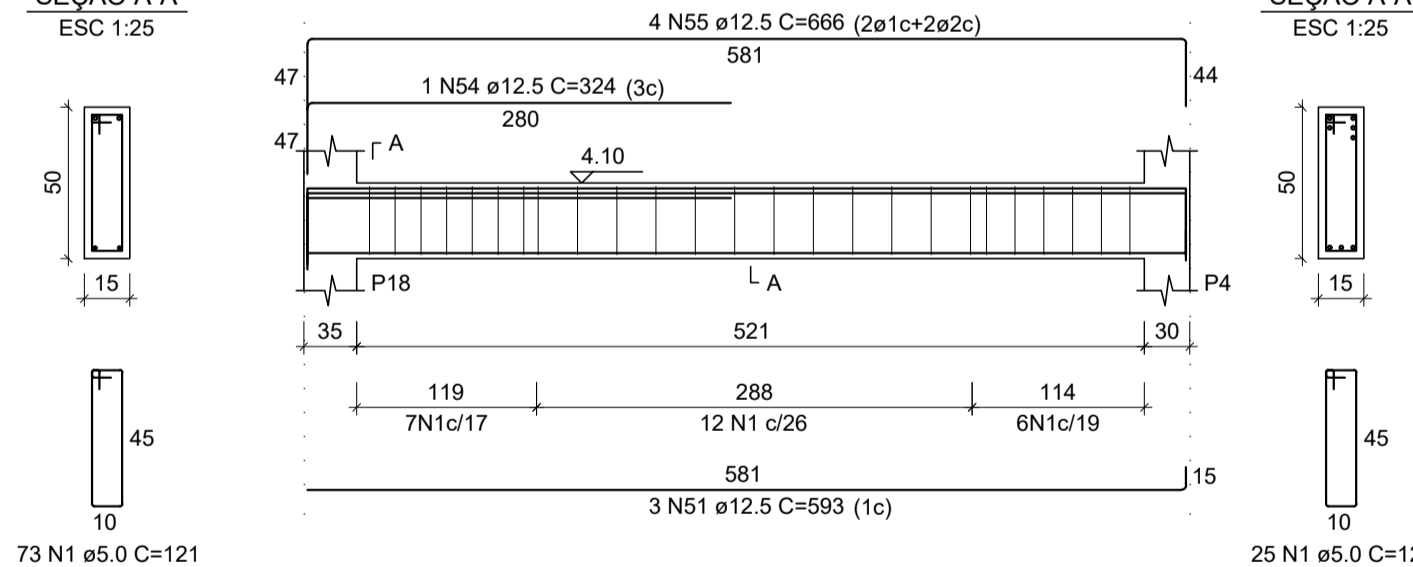
VF55
ESC 1:50



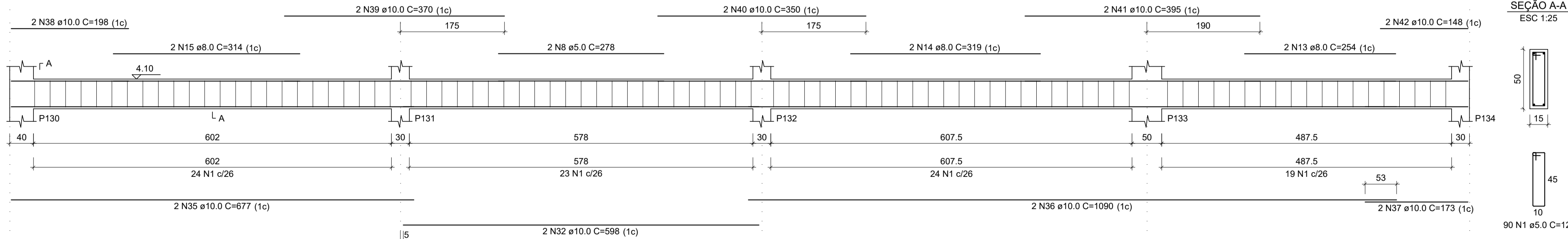
VF43
ESC 1:50



VF58
ESC 1:50



VF45
ESC 1:50



RESUMO DO AÇO

AÇO	DIAM (mm)	C.TOTAL (m)	QUANT + 10% (Barras)	UNIT	PESO + 10% (kg)
CA50	6.3	53.9	5	12 m	14.5
	8.0	39.9	4	12 m	17.3
	10.0	395.3	37	12 m	268.1
	12.5	127.1	12	12 m	134.7
	5.0	659.1	-	rolo (170 kg)	111.8
PESO TOTAL (kg)					
CA50					434.6
CA60					111.8

Volume de concreto (C-25) = 9.88 m³
Área de forma = 146.35 m²

REV. 00	13/04/20	EMISSÃO INICIAL	DAC
REVISÃO:	DATA :	DESCRIÇÃO:	RESP.:



DAC Engenharia
Rua Miguel Vianna, nº 81, Sala 12
Bairro Morro Chic
CEP: 37500-080 - Itajubá / MG
Tel: (35) 3623-5720
www.dacengenharia.com.br

GERÊNCIA DE PROJETOS: DENIS DE SOUZA SILVA CREA: MG-127.216/D
COORDENAÇÃO DE PROJETOS: ALOISIO CAETANO FERREIRA CREA: MG-97.132/D
RESPONSÁVEL TÉCNICO: ENGR. CIVIL FLÁVIA C. BARBOSA CREA: MG-187.842/D
PROJETO: WILLIAM BARADEL LARI
DESENHO: WILLIAM BARADEL LARI

IMPLANTAÇÃO DO CEMAPA E CENTRO POP

ENDEREÇO: RUA PROJETADA, BAIRRO SANTA CECÍLIA, POUSO ALEGRE - MINAS GERAIS

ASSUNTO: PROJETO ESTRUTURAL DE CONCRETO ARMADO FORMAS E FERRAGENS VIGAS

DISCIPLINA: ESTRUTURAL
FASE DO PROJETO: EXECUTIVO
FOLHA Nº: 22/28

DATA INICIAL: 13/04/2020 | ESCALA: INDICADA | REVISÃO: ROO | ARQUIVO: DAC-PMPA-CEPOP-PE-EST-ROO.DWG