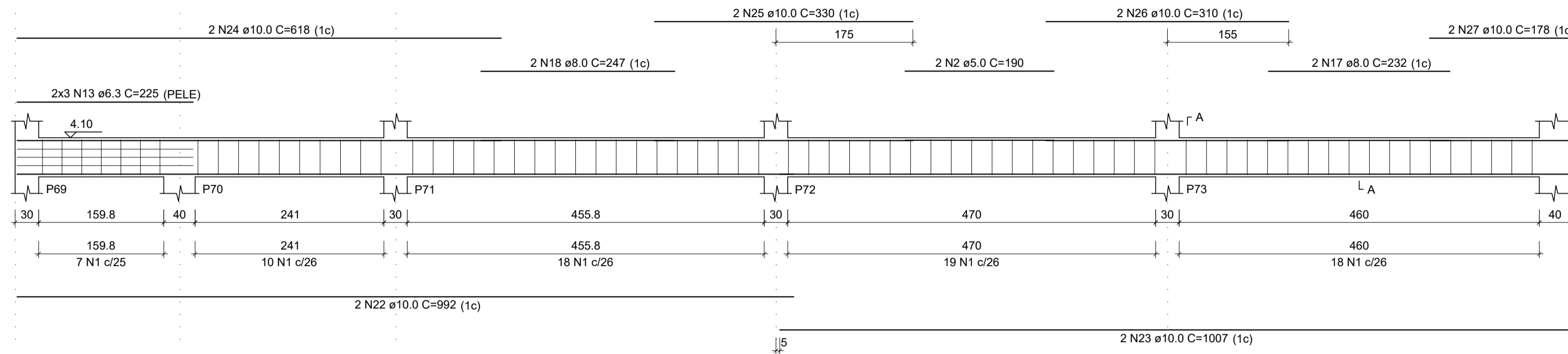
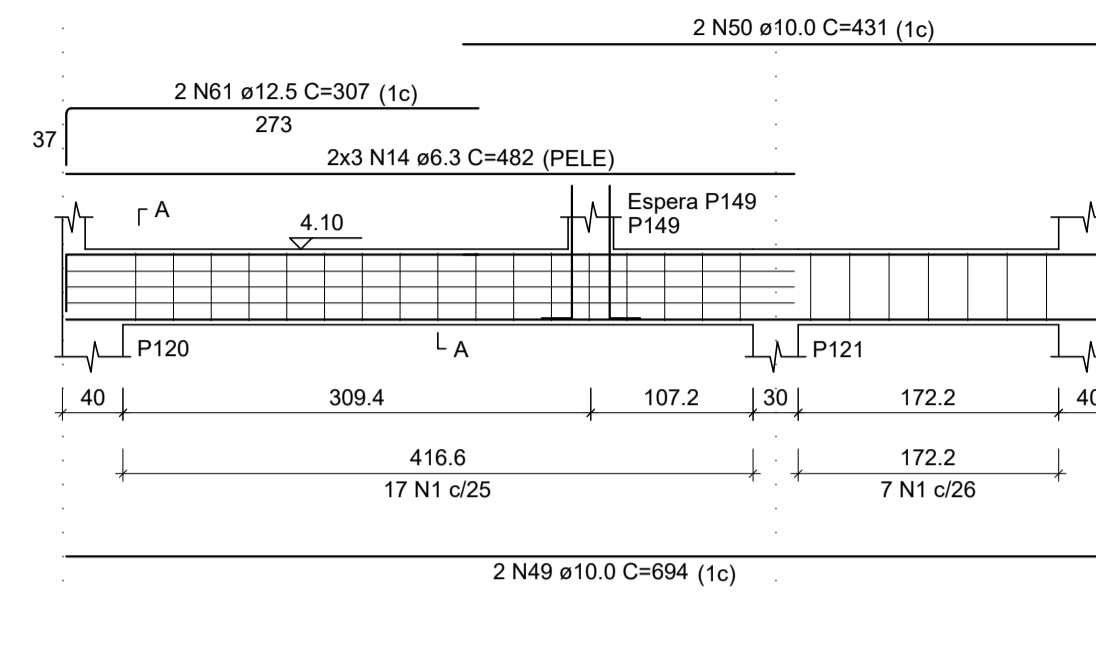


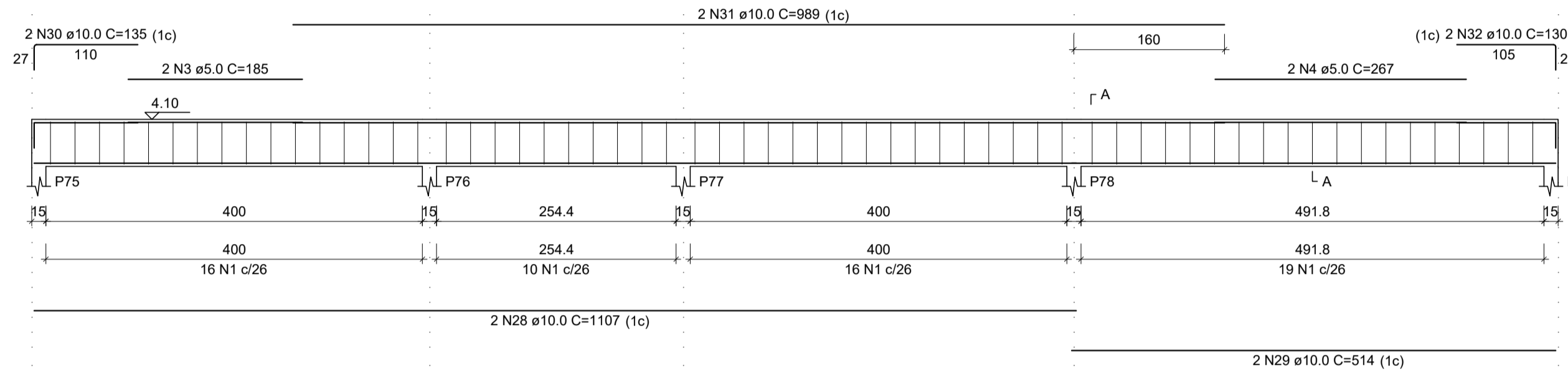
VF28
ESC 1:50



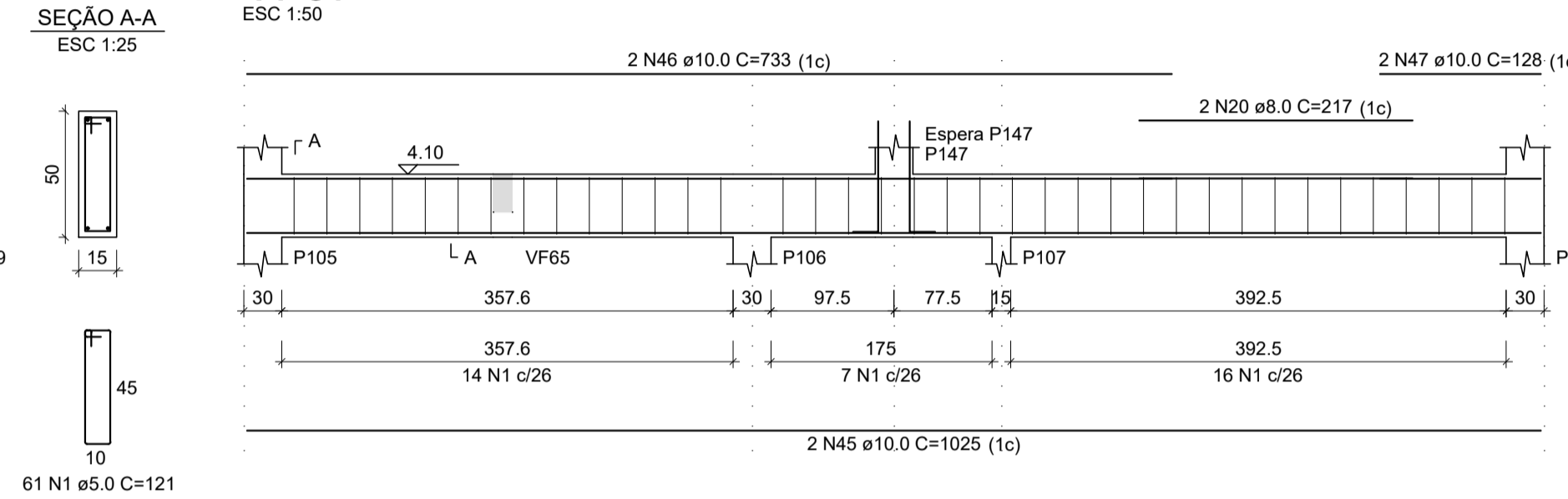
VF41
ESC 1:50



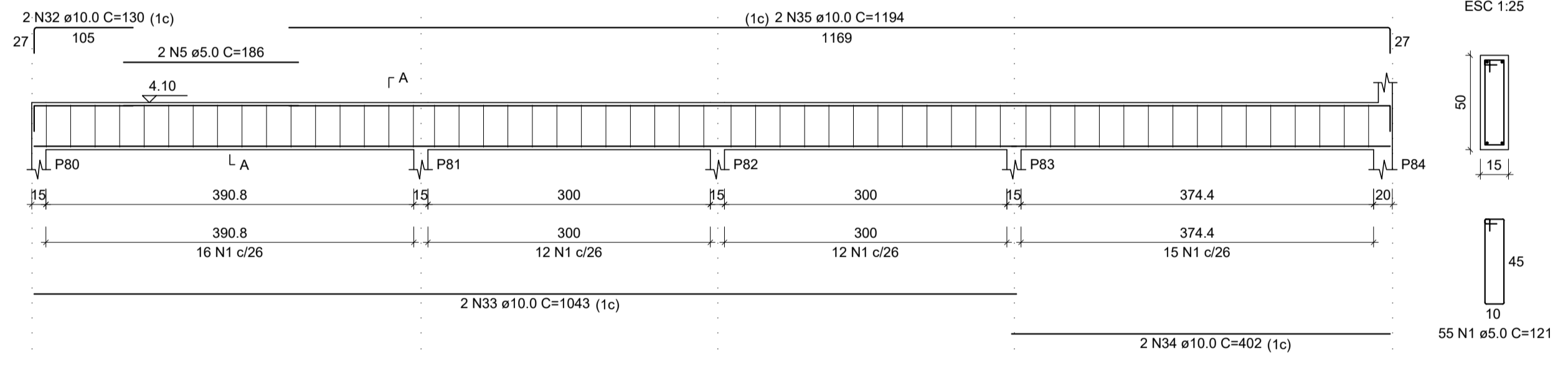
VF29
ESC 1:50



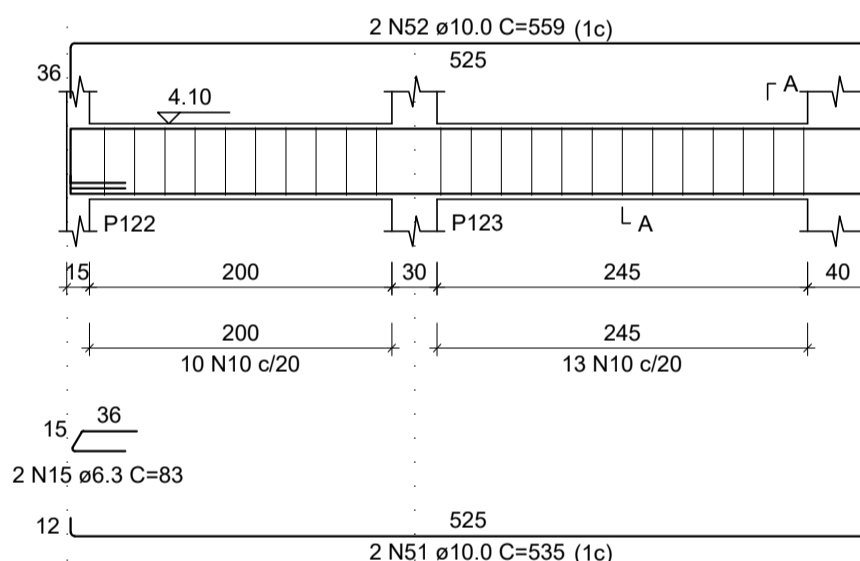
VF37
ESC 1:50



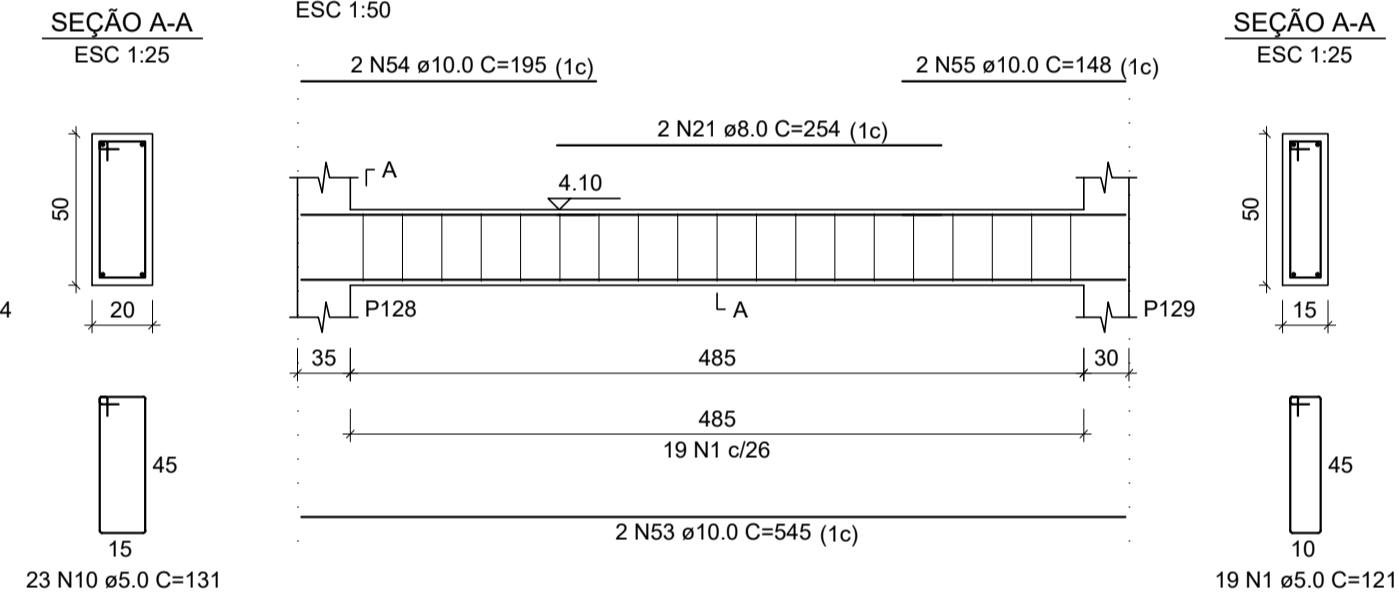
VF30
ESC 1:50



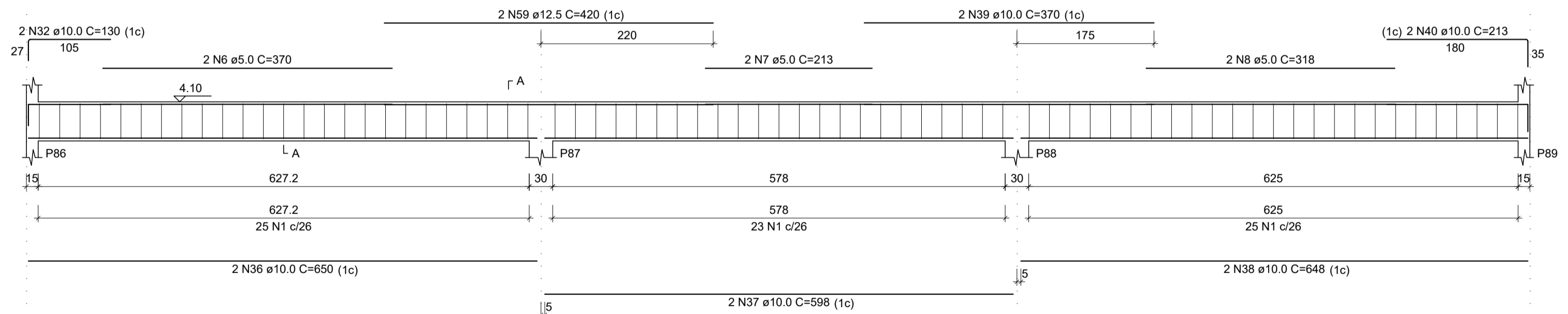
VF42
ESC 1:50



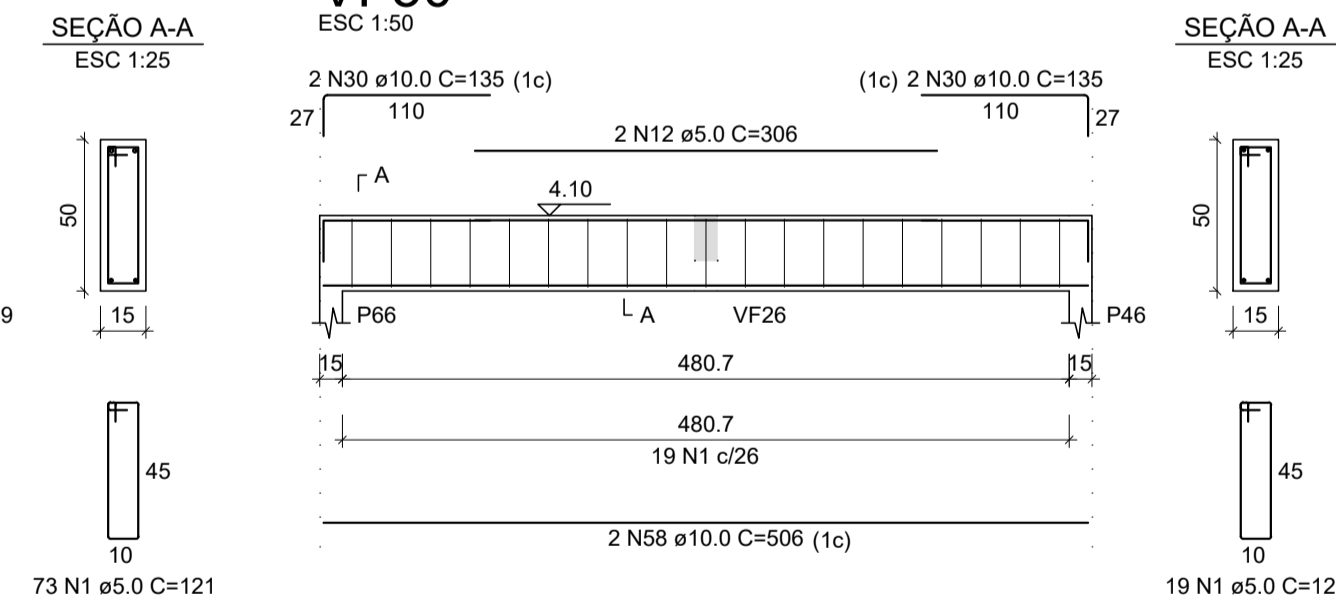
VF44
ESC 1:50



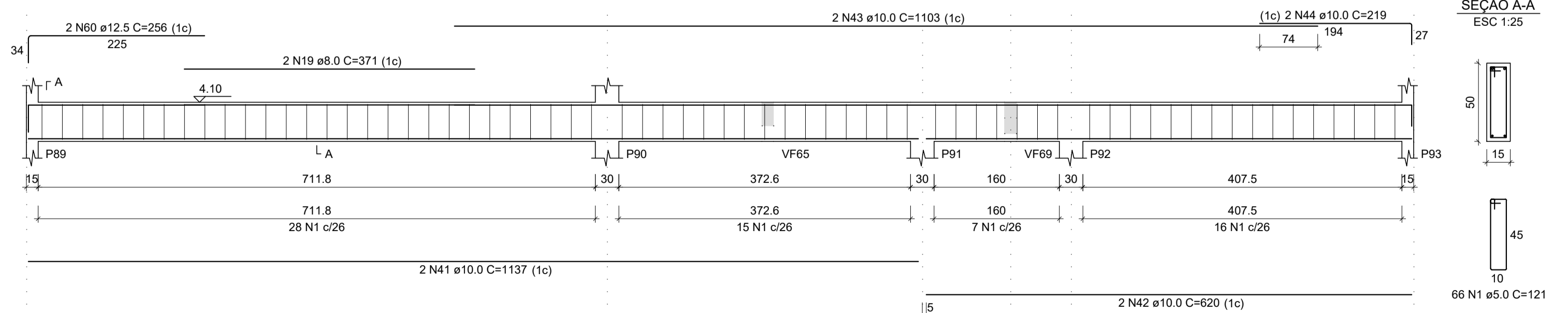
VF32
ESC 1:50



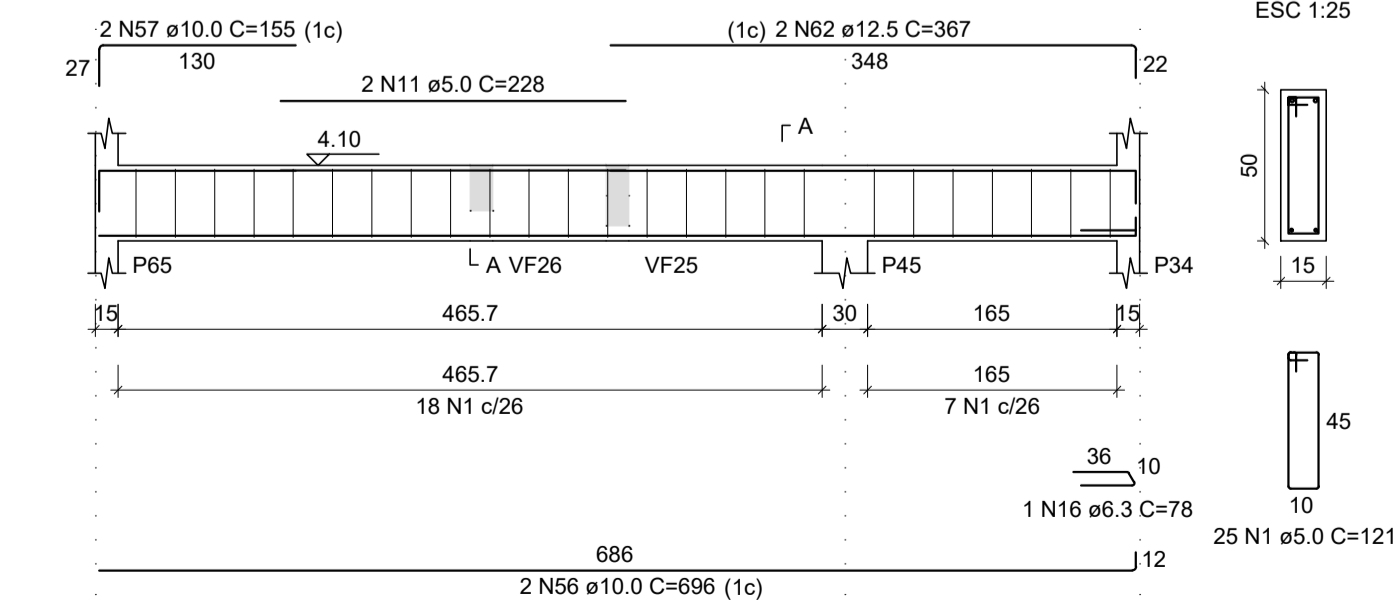
VF50
ESC 1:50



VF33
ESC 1:50



VF49
ESC 1:50



RELAÇÃO DO AÇO

AÇO	N	DIAM (mm)	QUANT	C.UNIT (cm)	C.TOTAL (cm)
CA80	1	5.0	451	121	54571
	2	5.0	2	190	380
	3	5.0	2	185	370
	4	5.0	2	267	534
	5	5.0	6	186	372
	6	5.0	2	370	740
	7	5.0	2	213	426
	8	5.0	2	318	636
	9	5.0	8	80	640
	10	5.0	23	131	3013
	11	5.0	2	228	456
	12	5.0	2	306	612
	13	6.3	6	225	1350
	14	6.3	6	482	2892
	15	6.3	2	83	166
	16	6.3	1	78	78
	17	8.0	2	232	464
	18	8.0	2	247	494
	19	8.0	2	371	742
	20	8.0	2	217	434
	21	8.0	2	254	508
	22	10.0	2	992	1984
	23	10.0	2	1007	2014
	24	10.0	2	618	1236
	25	10.0	2	330	660
	26	10.0	2	310	620
	27	10.0	2	178	356
	28	10.0	2	1107	2214
	29	10.0	2	514	1028
	30	10.0	6	135	810
	31	10.0	2	989	1978
	32	10.0	2	650	1300
	33	10.0	2	1043	2086
	34	10.0	2	402	804
	35	10.0	2	1194	2388
	36	10.0	2	650	1300
	37	10.0	2	598	1196
	38	10.0	2	648	1296
	39	10.0	2	370	740
	40	10.0	2	213	426
	41	10.0	2	1137	2274
	42	10.0	2	620	1240
	43	10.0	2	1103	2206
	44	10.0	2	219	438
	45	10.0	2	1025	2050
	46	10.0	2	733	1466
	47	10.0	2	128	256
	48	10.0	2	106	212
	49	10.0	2	694	1388
	50	10.0	2	431	862
	51	10.0	2	535	1070
	52	10.0	2	559	1118
	53	10.0	2	545	1090
	54	10.0	2	195	390
	55	10.0	2	148	296
	56	10.0	2	696	1392
	57	10.0	2	155	310
	58	10.0	2	506	1012
	59	12.5	2	420	840
	60	12.5	2	256	512
	61	12.5	2	307	614
	62	12.5	2	367	734

RESUMO DO AÇO

AÇO	DIAM (mm)	C.TOTAL (m)	QUANT + 10% (Barras)	UNIT	PESO + 10% (kg)
CA50	6.3	44.9	5	12 m	12.1
	8.0	26.4	3	12 m	11.5
	10.0	436.2	40	12 m	295.8
	12.5	27	3	12 m	28.6
CA60	5.0	627.5	-	rolo (170 kg)	106.4
PESO TOTAL (kg)					
CA50				348	
CA60				106.4	

Volume de concreto (C-25) = 9,70 m³
Área de forma = 146,95 m²

REV. 00	13/04/20	EMISSÃO INICIAL	DAC
REVISÃO: DATA	:	DESCRIÇÃO:	RESP.:



 Rua Miguel Vianna, nº 81, Sala 12 Bairro Morro Chic CEP: 37500-080 - Itajubá / MG Tel: (35) 3623-5720 www.dacengenharia.com.br	GERÊNCIA DE PROJETOS DENIS DE SOUZA SILVA CREA: MG-127.216/D
	COORDENAÇÃO DE PROJETOS ALOISIO CAETANO FERREIRA CREA: MG-97.132/D
	RESPONSÁVEL TÉCNICO ENGR. CIVIL FLÁVIA C. BARBOSA CREA: MG-187.842/D
	DESENHO WILLIAM BARADEL LARI

EMPREENDIMENTO IMPLANTAÇÃO DO CEMAPA E CENTRO POP	
ENDEREÇO RUA PROJETADA, BAIRRO SANTA CECÍLIA POUSO ALEGRE - MINAS GERAIS	DISCIPLINA ESTRUTURAL
ASSUNTO PROJETO ESTRUTURAL DE CONCRETO ARMADO FORMAS E FERRAGENS VIGAS	FASE DO PROJETO EXECUTIVO
	FOLHA Nº. 21/28