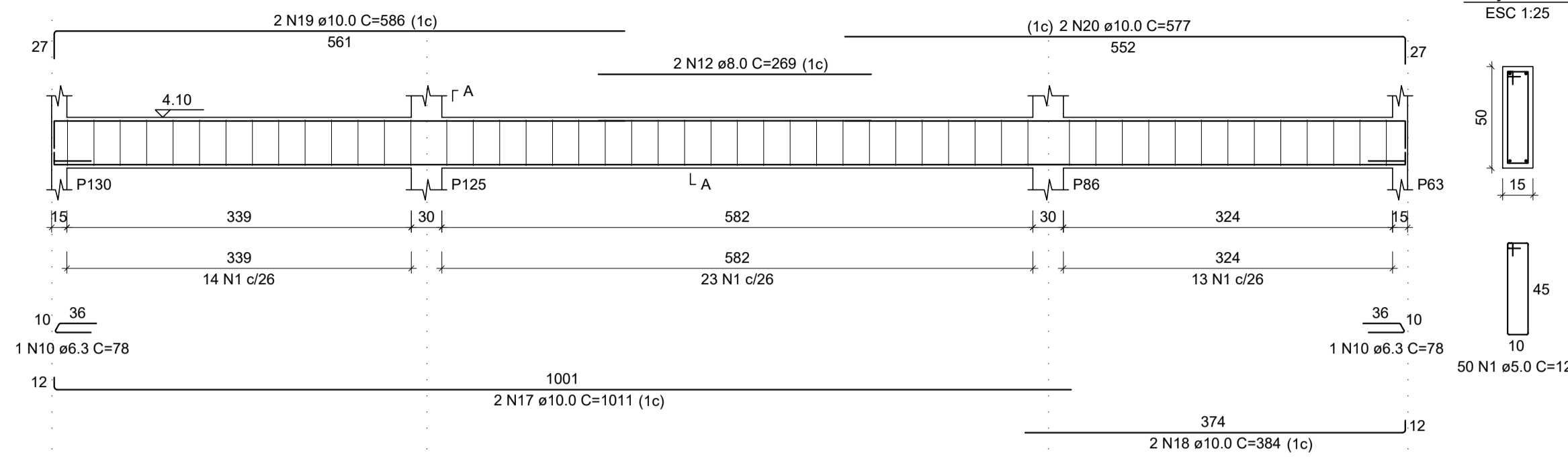
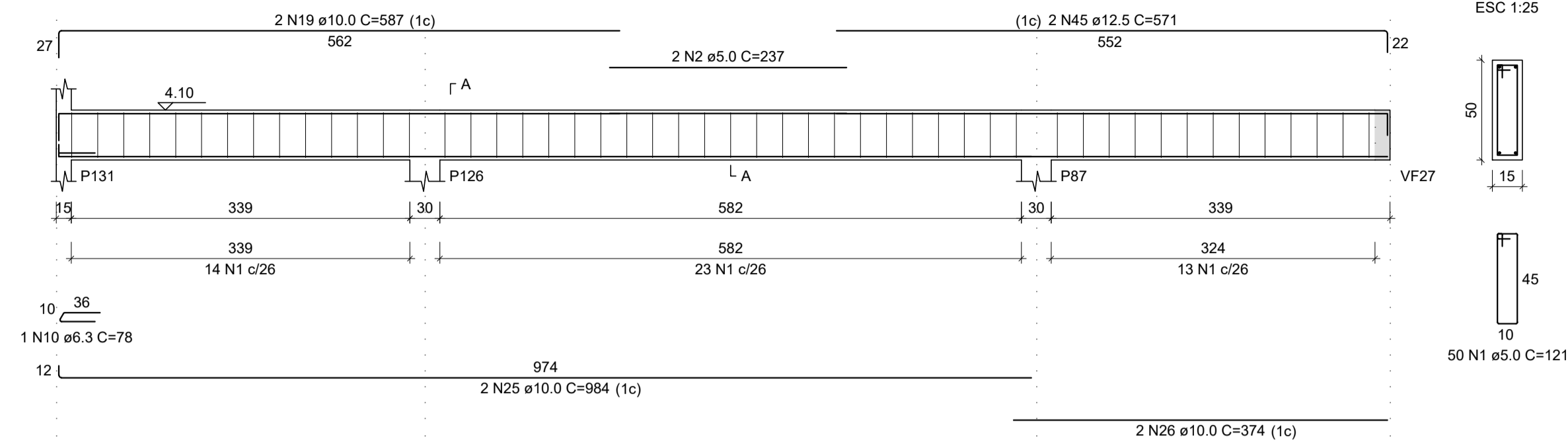


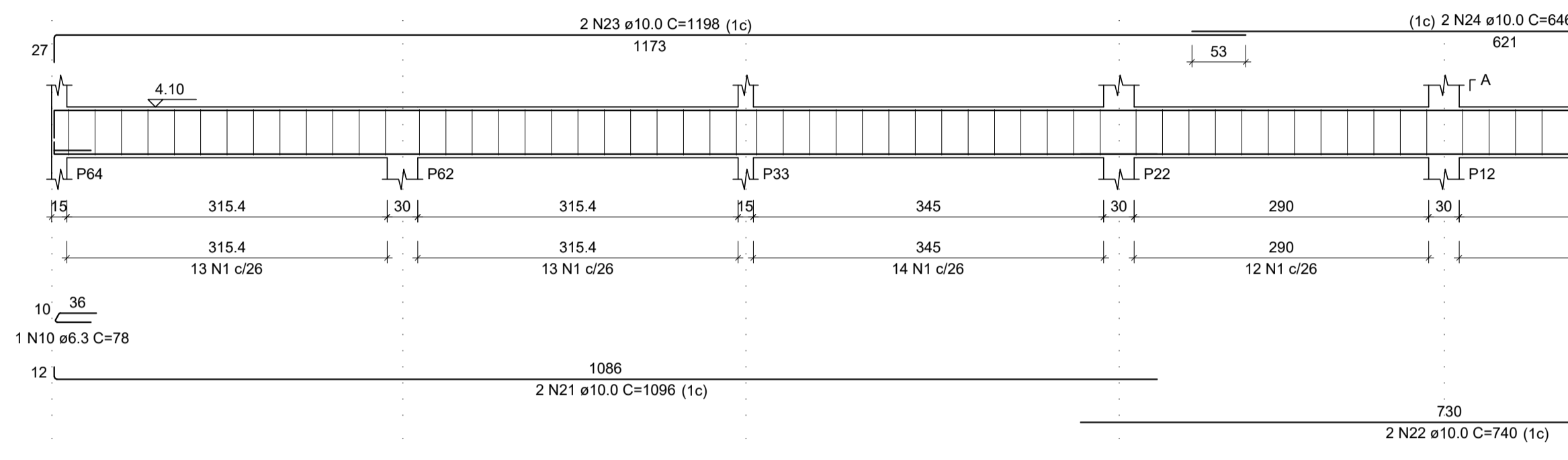
VF46
ESC 1:50



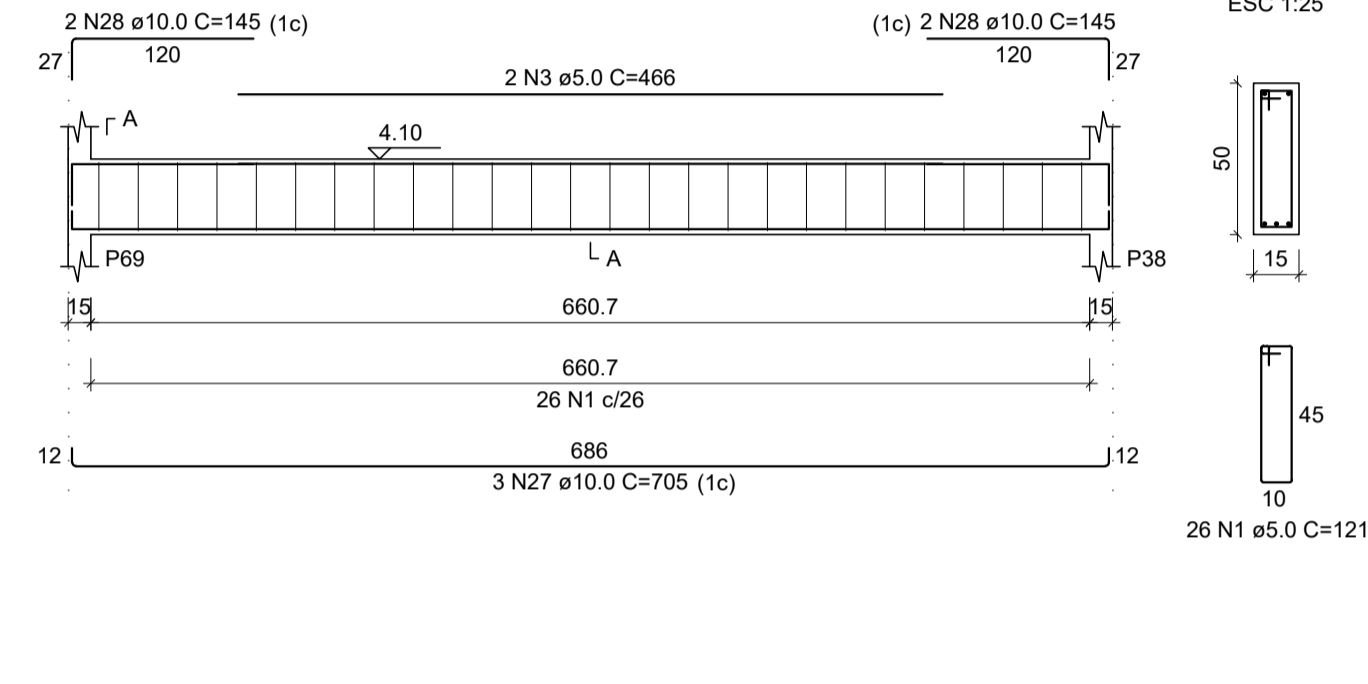
VF48
ESC 1:50



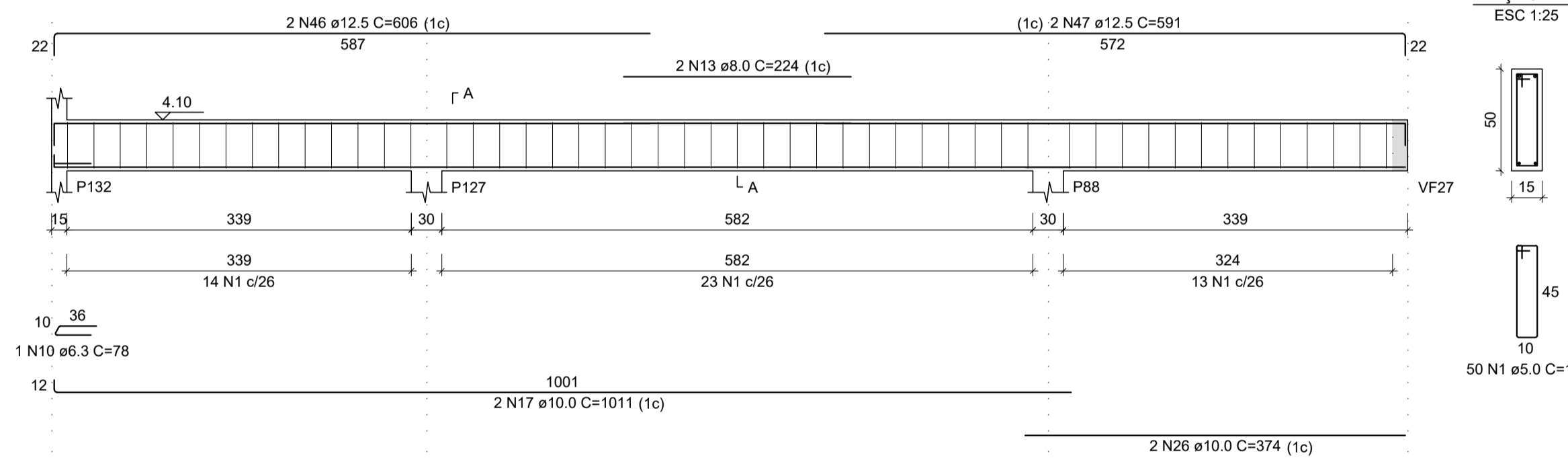
VF47
ESC 1:50



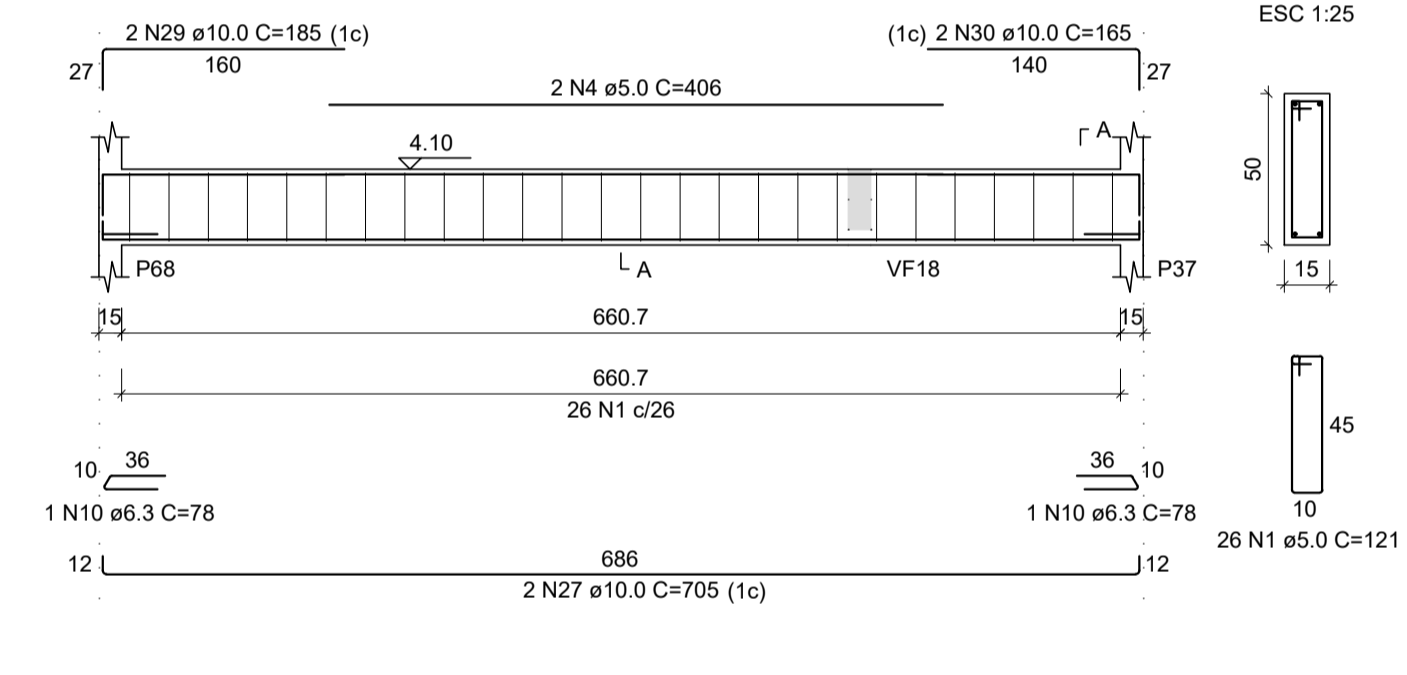
VF55
ESC 1:50



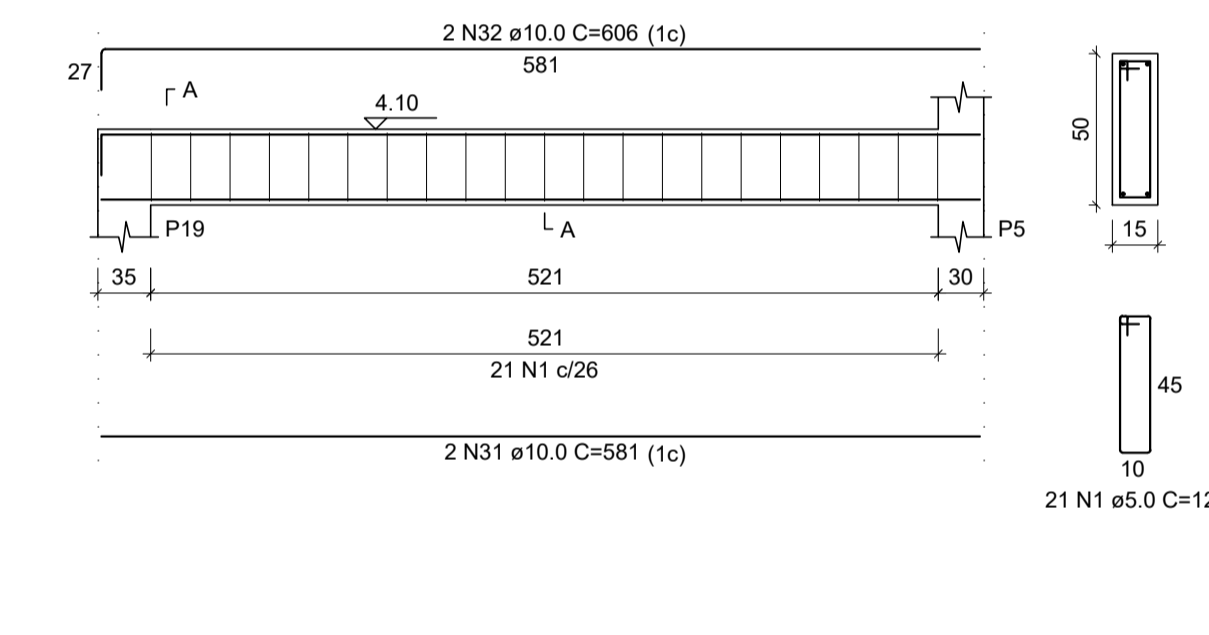
VF53
ESC 1:50



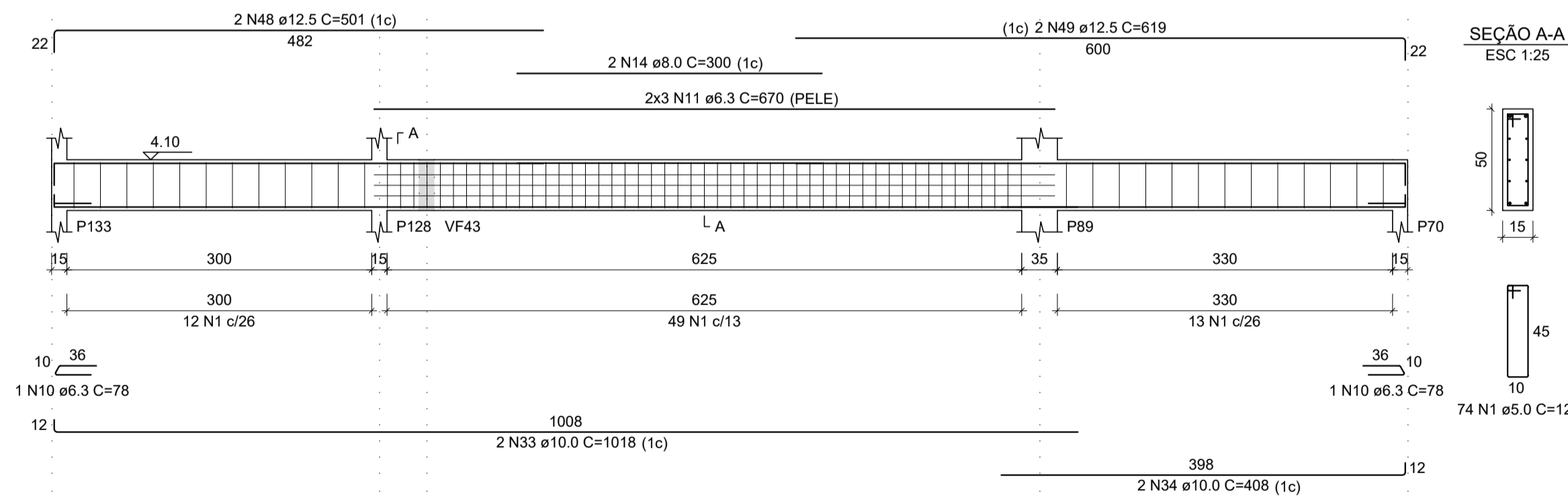
VF56
ESC 1:50



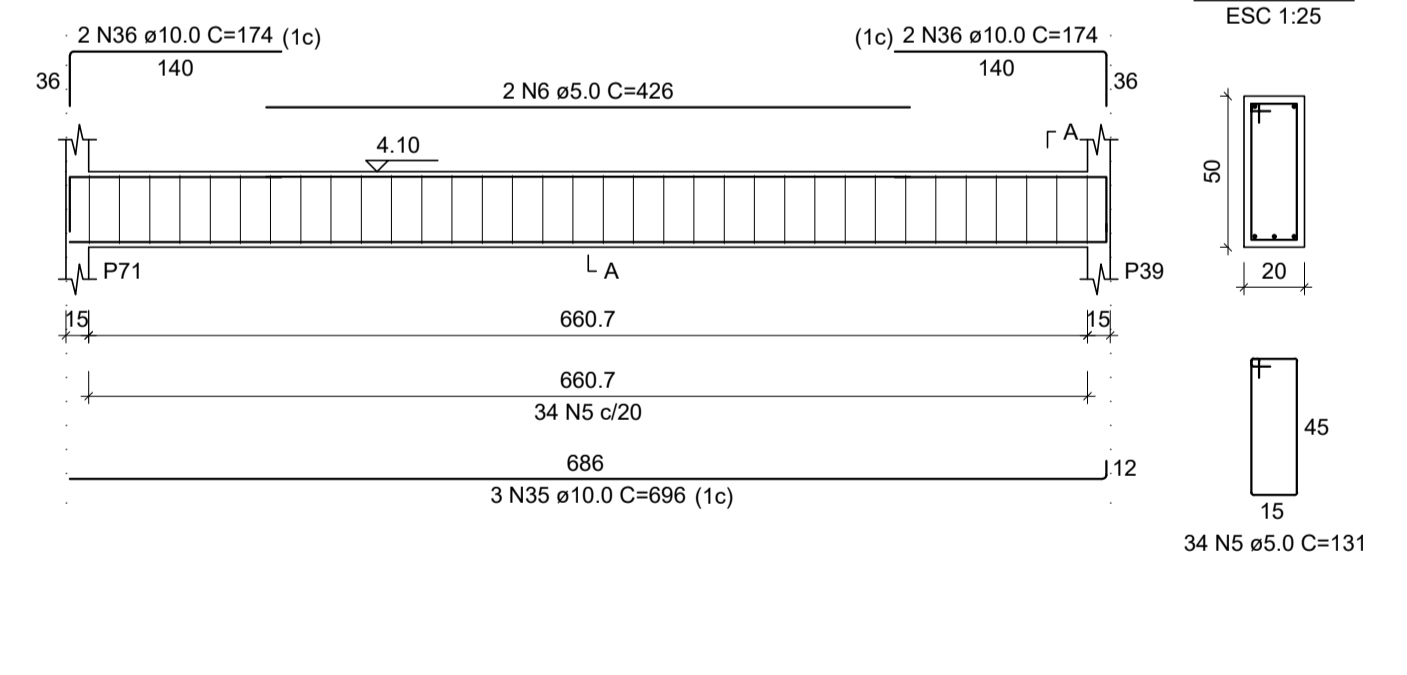
VF59
ESC 1:50



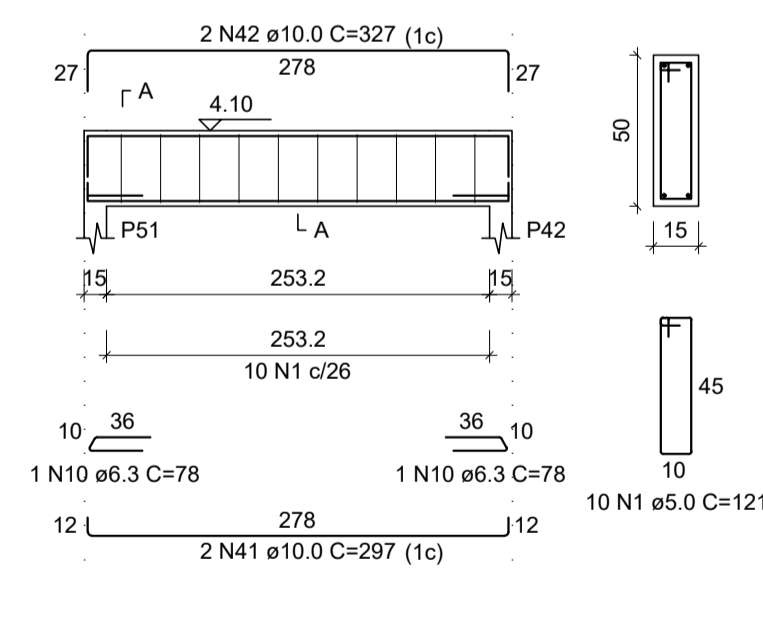
VF60
ESC 1:50



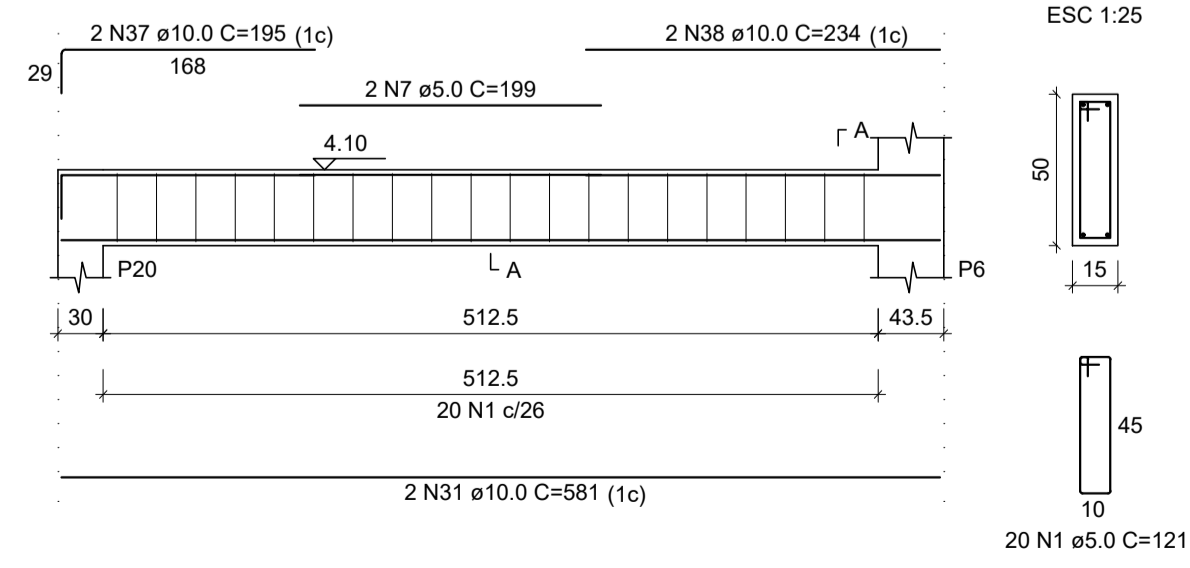
VF61
ESC 1:50



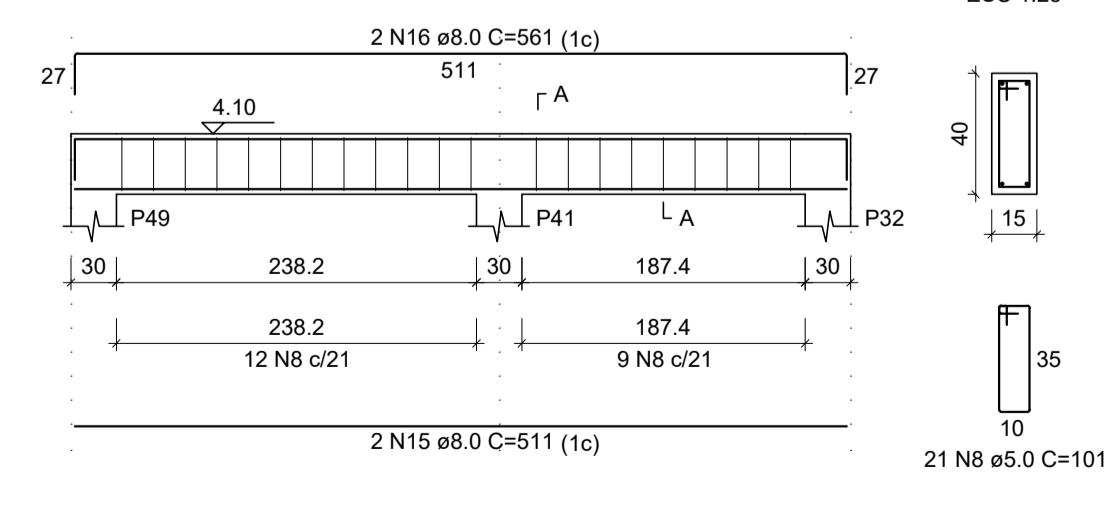
VF71
ESC 1:50



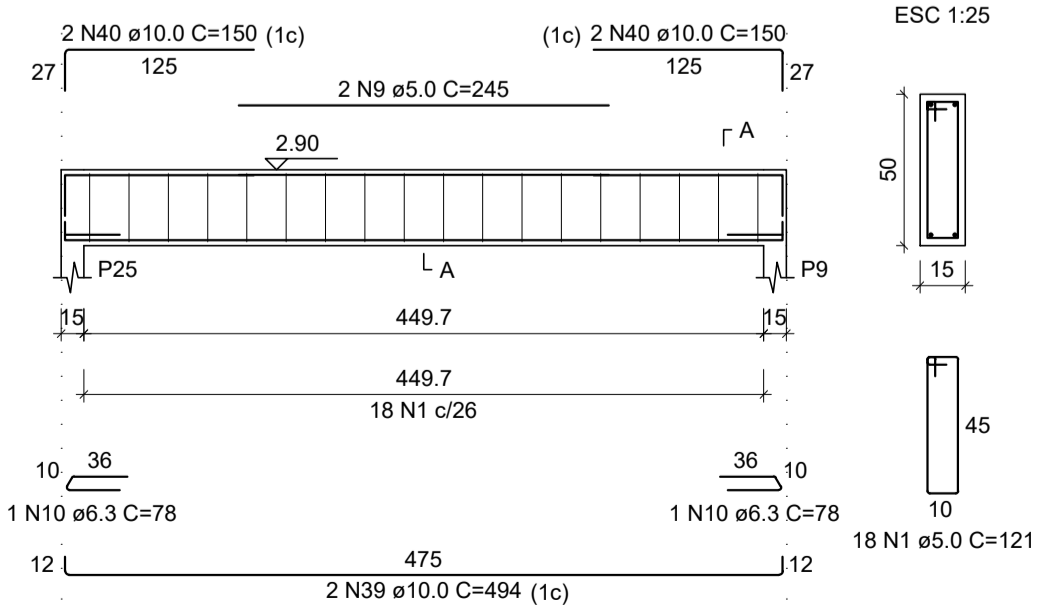
VF62
ESC 1:50



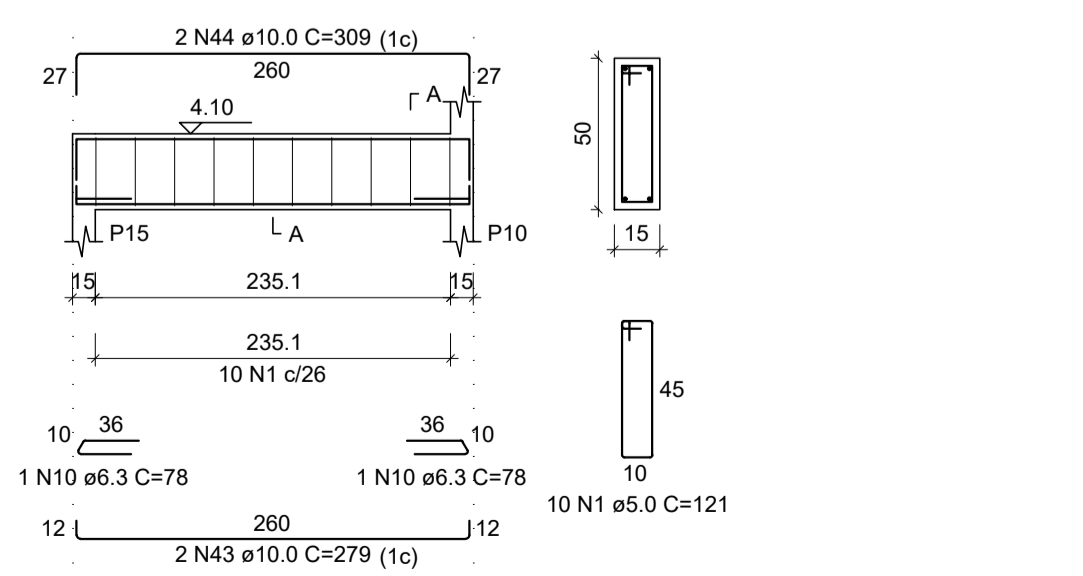
VF66
ESC 1:50



VF68
ESC 1:50



VF75
ESC 1:50



RELAÇÃO DO AÇO

VF46	VF47	VF48
VF53	VF55	VF56
VF59	VF60	VF61
VF71	VF75	VF68

AÇO	N	DIAM (mm)	QUANT	C.UNIT (cm)	C.TOTAL (cm)
CA60	1	5.0	421	121	50941
	2	5.0	2	237	474
	3	5.0	2	466	932
	4	5.0	2	406	812
	5	5.0	34	131	4454
	6	5.0	2	426	852
	7	5.0	2	199	398
	8	5.0	21	101	2121
	9	5.0	2	245	490
	10	6.3	16	78	1248
	11	6.3	6	670	4020
	12	8.0	2	269	538
	13	8.0	2	224	448
	14	8.0	2	300	600
	15	8.0	2	511	1022
	16	8.0	2	561	1122
	17	10.0	4	1011	4044
	18	10.0	2	394	768
	19	10.0	4	586	2344
	20	10.0	2	577	1154
	21	10.0	2	1006	2012
	22	10.0	2	740	1480
	23	10.0	2	1198	2396
	24	10.0	2	646	1292
	25	10.0	2	984	1968
	26	10.0	4	374	1496
	27	10.0	5	705	3525
	28	10.0	4	145	580
	29	10.0	2	185	370
	30	10.0	2	165	330
	31	10.0	4	581	2324
	32	10.0	2	606	1212
	33	10.0	2	1018	2036
	34	10.0	2	406	812
	35	10.0	3	696	2088
	36	10.0	4	174	696
	37	10.0	2	195	390
	38	10.0	2	224	448
	39	10.0	2	494	988
	40	10.0	4	150	600
	41	10.0	2	297	594
	42	10.0	2	327	654
	43	10.0	2	279	558
	44	10.0	2	309	618
	45	12.5	2	574	1142
	46	12.5	2	606	1212
	47	12.5	2	591	1182
	48	12.5	2	501	1002
	49	12.5	2	619	1238

RESUMO DO AÇO

AÇO	DIAM (mm)	C.TOTAL (m)	QUANT + 10% (Barras)	UNIT	PESO + 10% (kg)
CA50	6.3	52.7	5	12 m	14.2
	8.0	37.3	4	12 m	16.2
	10.0	379.8	35	12 m	257.6
	12.5	57.8	6	12 m	61.2
	5.0	614.7	-	rolo (170 kg)	104.2
PESO TOTAL (kg)					
CA50				349.2	
CA60				104.2	

Volume de concreto (C-25) = 9.00 m³
Área de forma = 135.86 m²

REV. 00	13/04/20	EMISSÃO INICIAL	DAC
REVISÃO:	DATA :	DESCRIÇÃO:	RESP.:



DAC Engenharia
Rua Miguel Vianna, nº 81, Sala 12
Bairro Morro Chic
CEP: 37500-080 - Itajubá / MG
Tel: (35) 3623-5720
www.dacengenharia.com.br

GERÊNCIA DE PROJETOS: DENIS DE SOUZA SILVA CREA: MG-127.216/D
COORDENAÇÃO DE PROJETOS: ALOISIO CAETANO FERREIRA CREA: MG-97.132/D
RESPONSÁVEL TÉCNICO: ENGR. CIVIL FLÁVIA C. BARBOSA CREA: MG-187.812/D
DESENHO: WILLIAM BARADEL LARI

EMPRESAMENTO: **IMPLANTAÇÃO DO CEMAPA E CENTRO POP**

ENDEREÇO: RUA PROJETADA, BAIRRO SANTA CECÍLIA, POUSO ALEGRE - MINAS GERAIS

ASSUNTO: PROJETO ESTRUTURAL DE CONCRETO ARMADO FORMAS E FERRAGENS VIGAS

DISCIPLINA: **ESTRUTURAL**

FASE DO PROJETO: **EXECUTIVO**

FOLHA Nº: **20/28**

DATA INICIAL: 13/04/2020 | ESCALA: INDICADA | REVISÃO: R00 | ARQUIVO: DAC-PMPA-CEPOP-PE-EST-R00.DWG