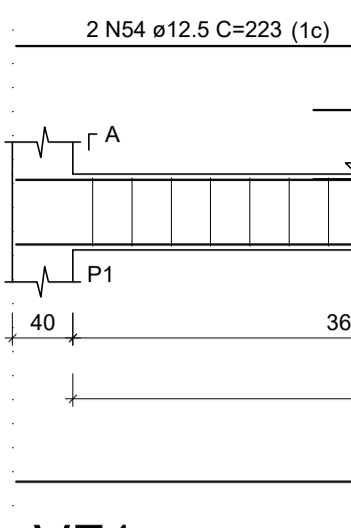
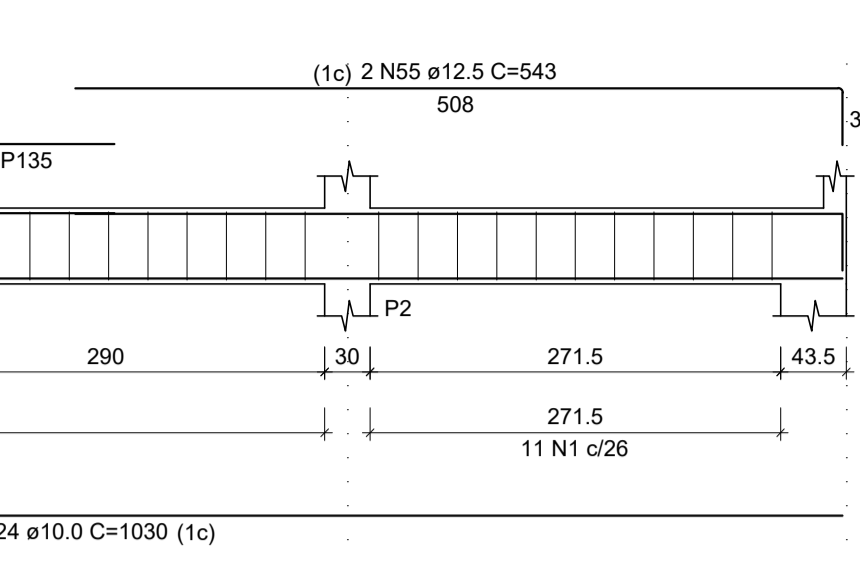


PROJETO ESTRUTURAL - CEMAPA

ESCALA INDICADA

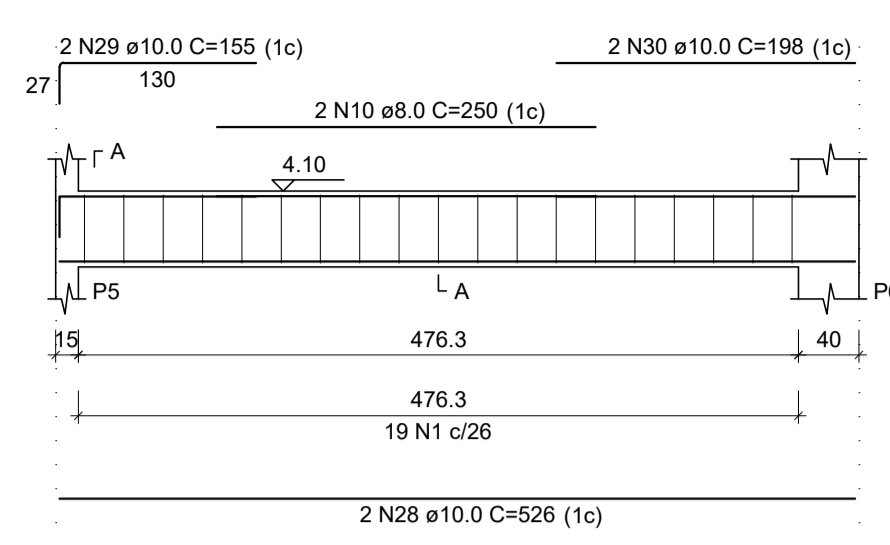


VF1
ESC 1:50

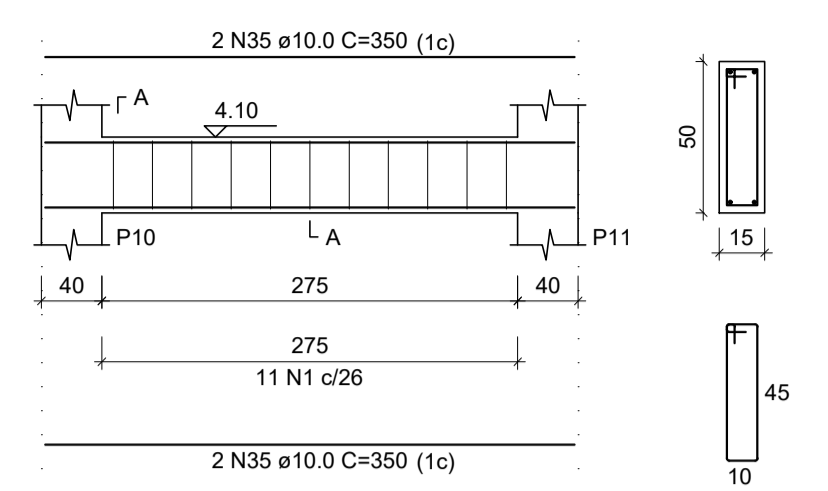


VF2
ESC 1:50

VF3
ESC 1:50

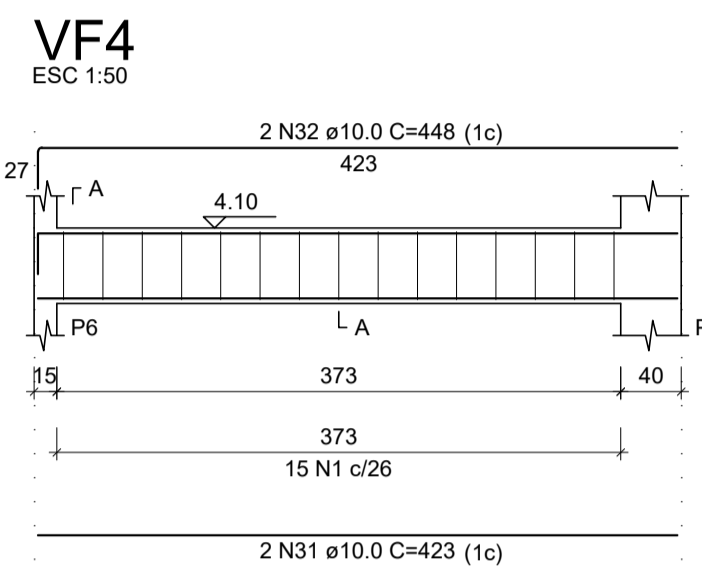


VF6
ESC 1:50

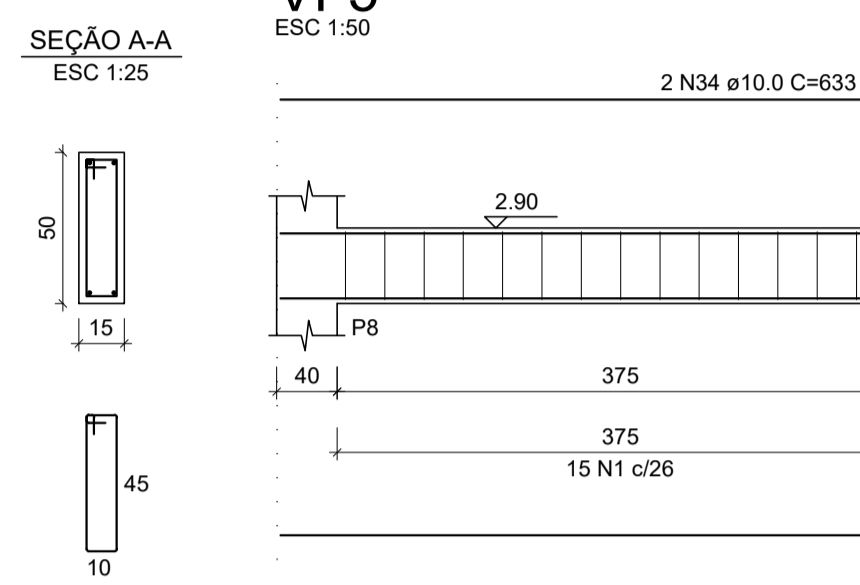


RELAÇÃO DO AÇO

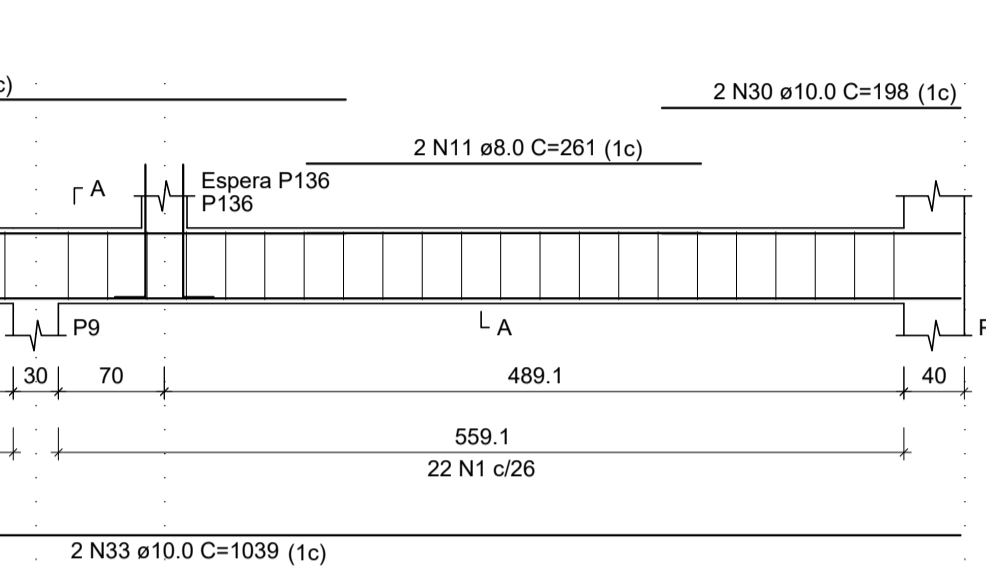
AÇO	N	DIAM (mm)	QUANT	C.UNIT (cm)	C.TOTAL (cm)
CA60	1	5.0	342	121	41382
	2	5.0	148	80	11840
	3	5.0	4	475	1900
	3	5.0	46	101	4646
	5	5.0	2	276	552
	6	5.0	2	185	370
	7	6.3	3	78	234
	8	8.0	3	352	704
	9	8.0	3	92	276
	10	8.0	2	250	500
CA50	11	8.0	2	261	522
	12	8.0	2	343	686
	13	8.0	2	510	1020
	14	8.0	2	546	1092
	15	8.0	2	225	450
	16	8.0	2	261	522
	17	8.0	2	309	618
	18	8.0	2	334	668
	19	8.0	2	518	1036
	20	8.0	2	275	550
	21	8.0	4	311	1244
	22	8.0	2	291	582
	23	8.0	2	283	566
	24	10.0	2	1030	2060
	25	10.0	12	106	1272
	26	10.0	3	400	1200
	27	10.0	2	230	460
	28	10.0	2	526	1052
	29	10.0	10	155	1550
	30	10.0	4	198	792
	31	10.0	2	423	846
	32	10.0	2	448	896
	33	10.0	2	1039	2078
	34	10.0	2	633	1266
	35	10.0	4	350	1400
	36	10.0	6	715	4290
	37	10.0	2	573	1146
	38	10.0	2	603	1206
39	10.0	3	398	1194	
40	10.0	2	254	508	
41	10.0	2	939	1878	
42	10.0	2	135	270	
43	10.0	2	598	1196	
44	10.0	2	1023	2046	
45	10.0	2	337	674	
46	10.0	2	153	306	
47	10.0	2	1062	2124	
48	10.0	2	888	1776	
49	10.0	2	513	1026	
50	10.0	2	1200	2400	
51	10.0	2	236	472	
52	10.0	2	582	1164	
53	10.0	2	312	624	
54	12.5	2	223	446	
55	12.5	2	543	1086	
56	12.5	3	227	681	
57	12.5	3	509	1527	
58	12.5	2	242	484	
59	12.5	3	277	831	



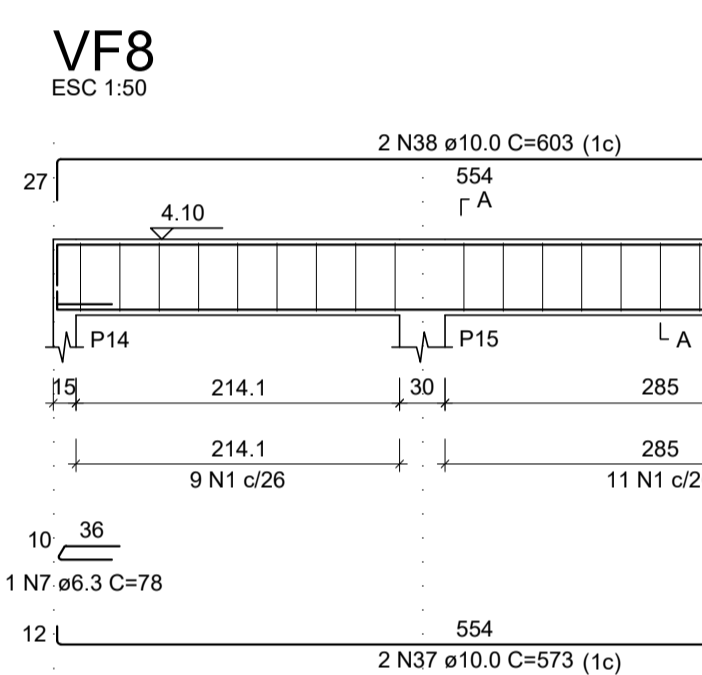
VF4
ESC 1:50



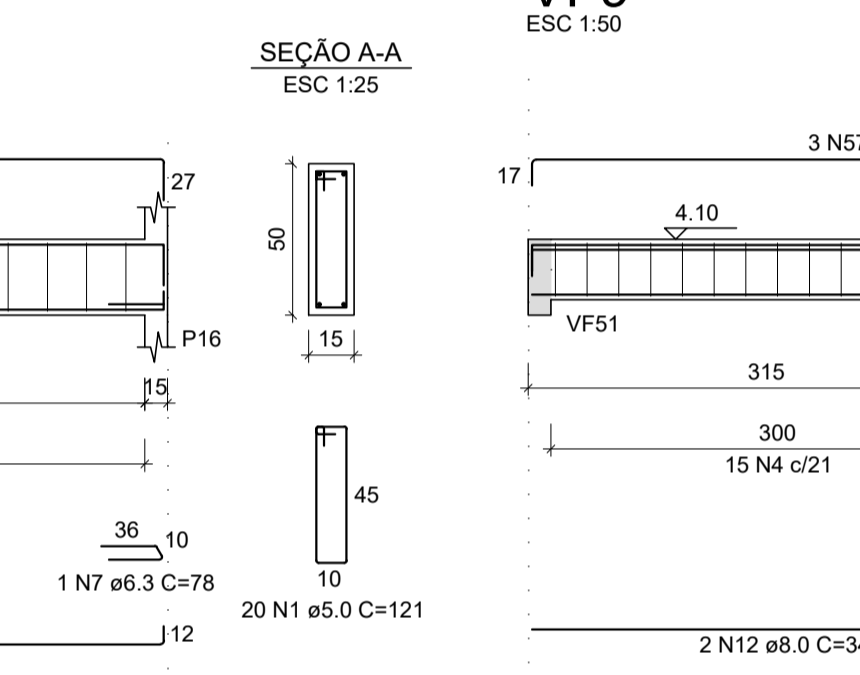
VF5
ESC 1:50



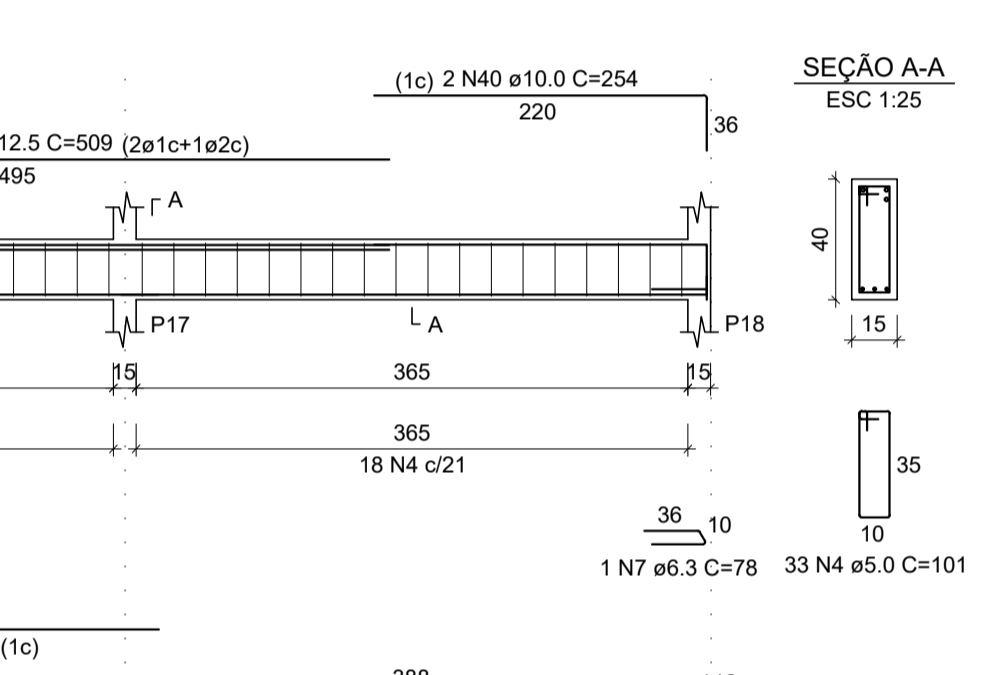
VF7
ESC 1:50



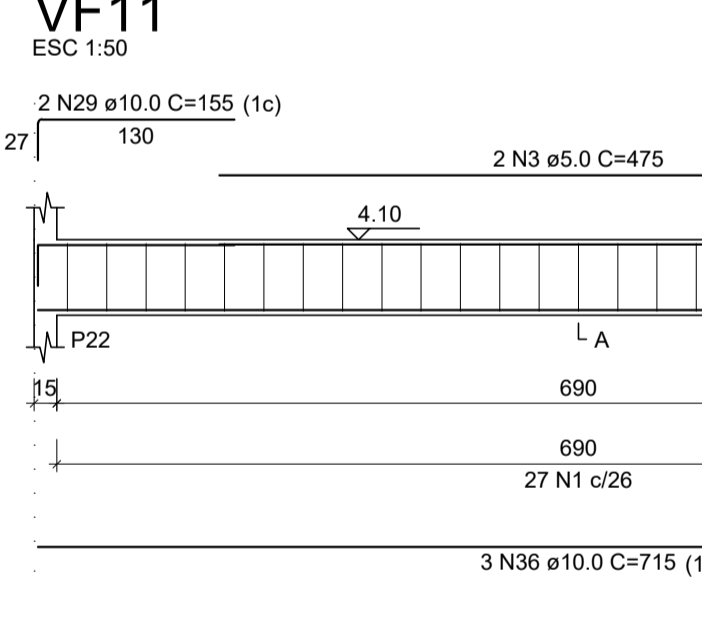
VF8
ESC 1:50



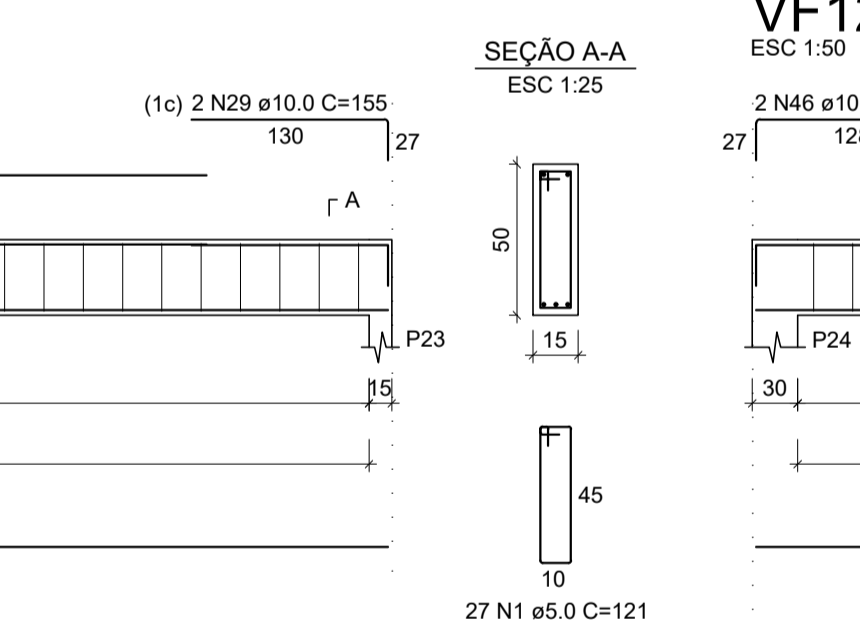
VF9
ESC 1:50



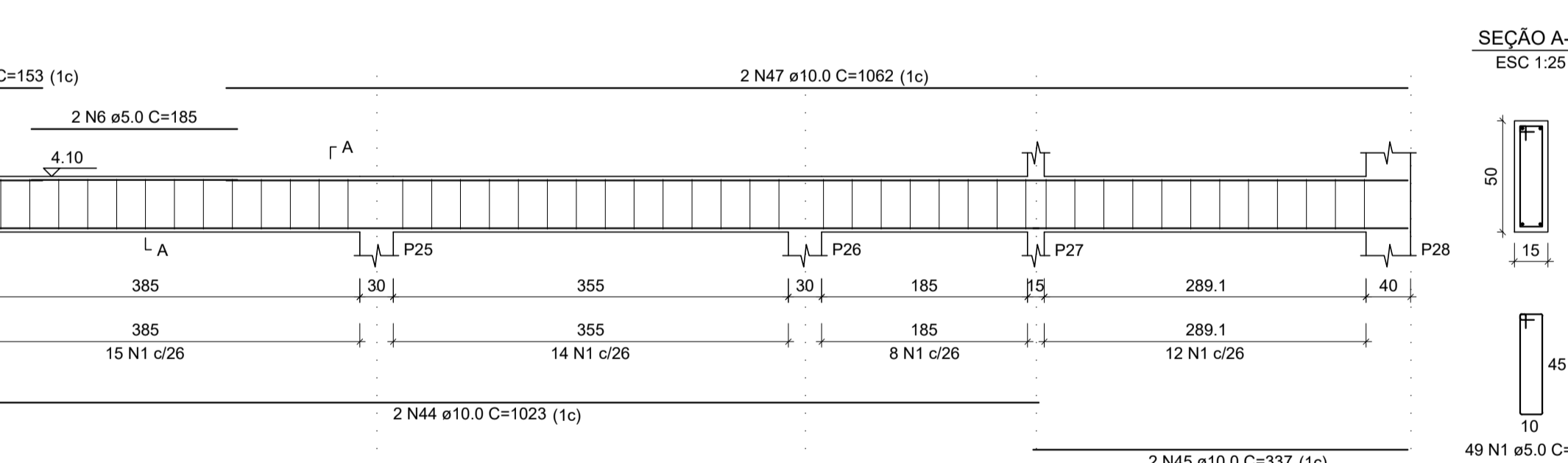
VF10
ESC 1:50



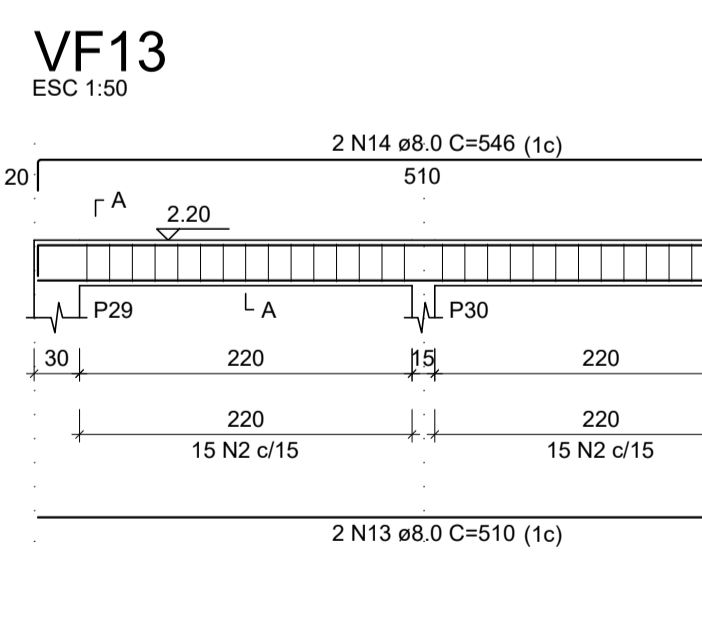
VF11
ESC 1:50



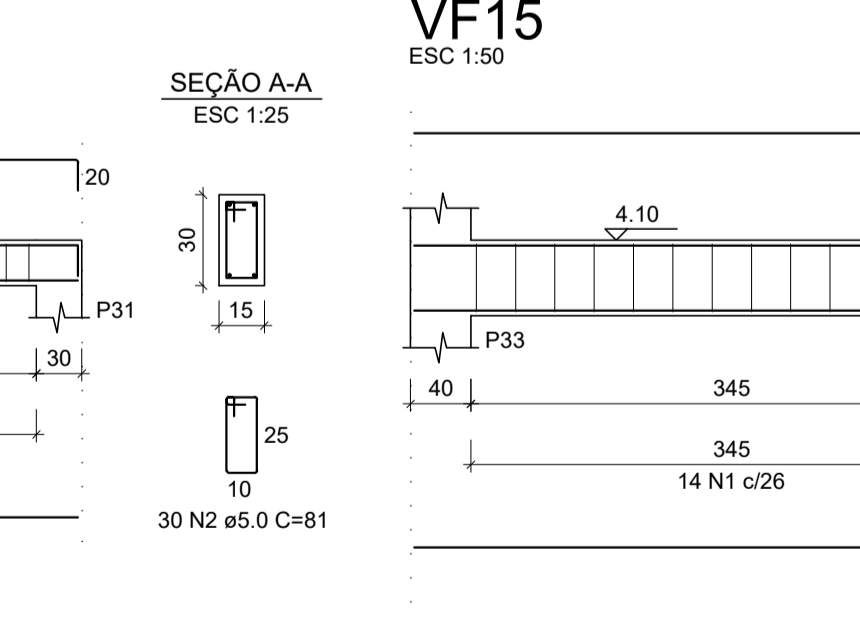
VF12
ESC 1:50



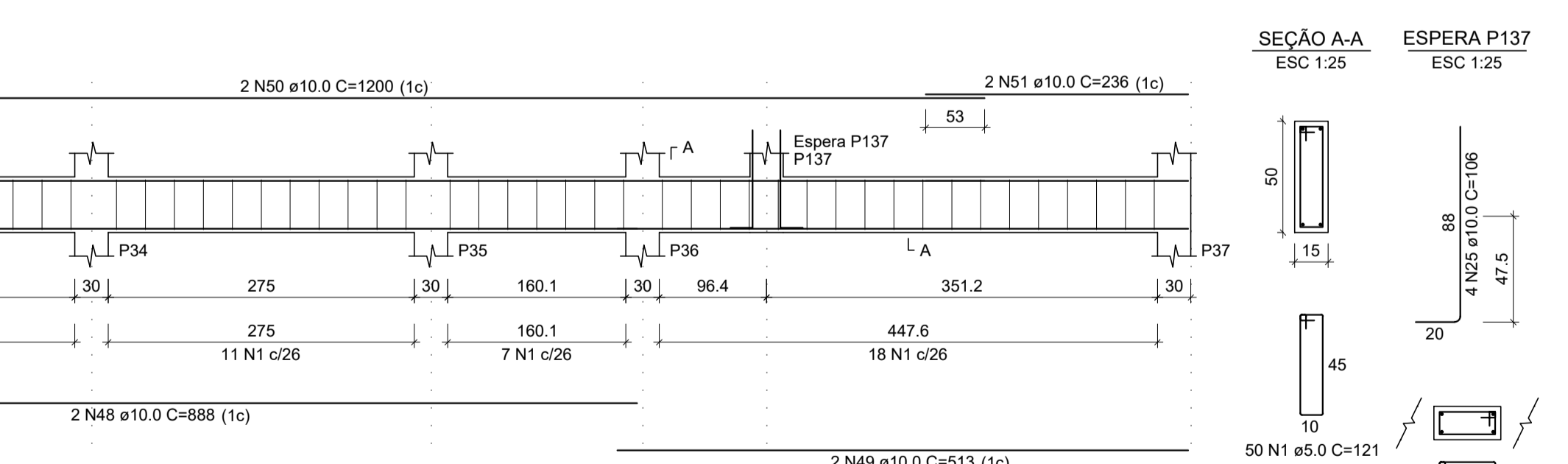
VF14
ESC 1:50



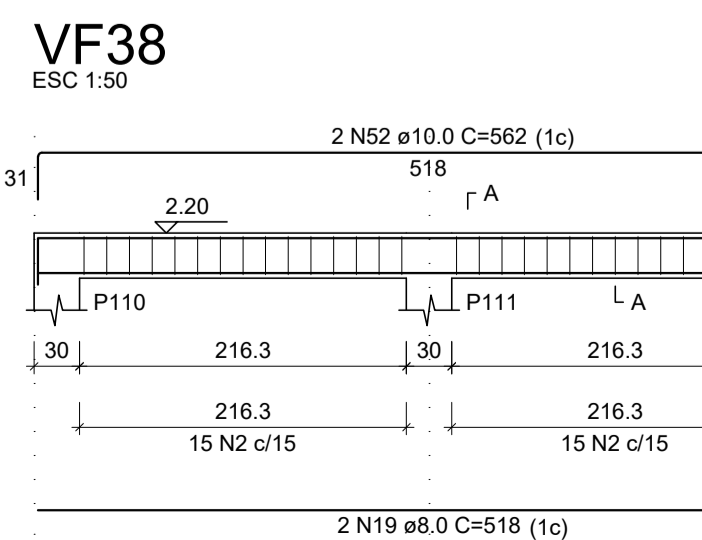
VF13
ESC 1:50



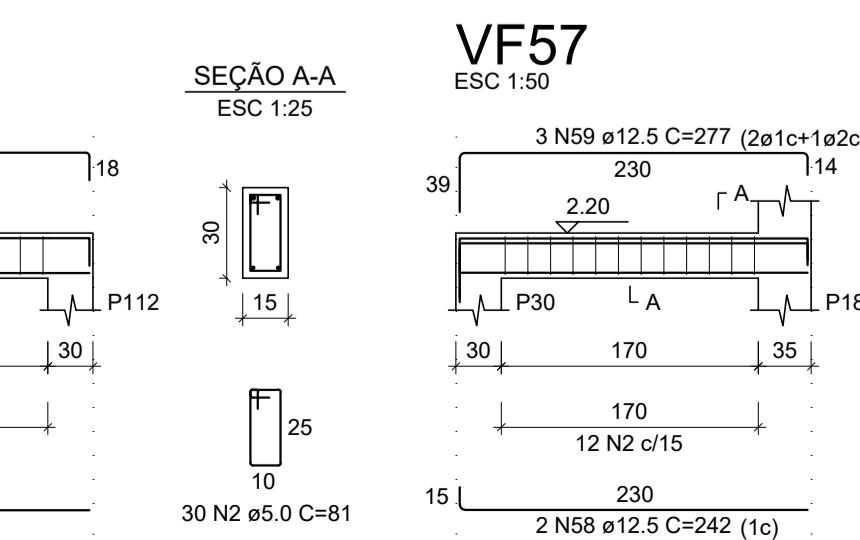
VF15
ESC 1:50



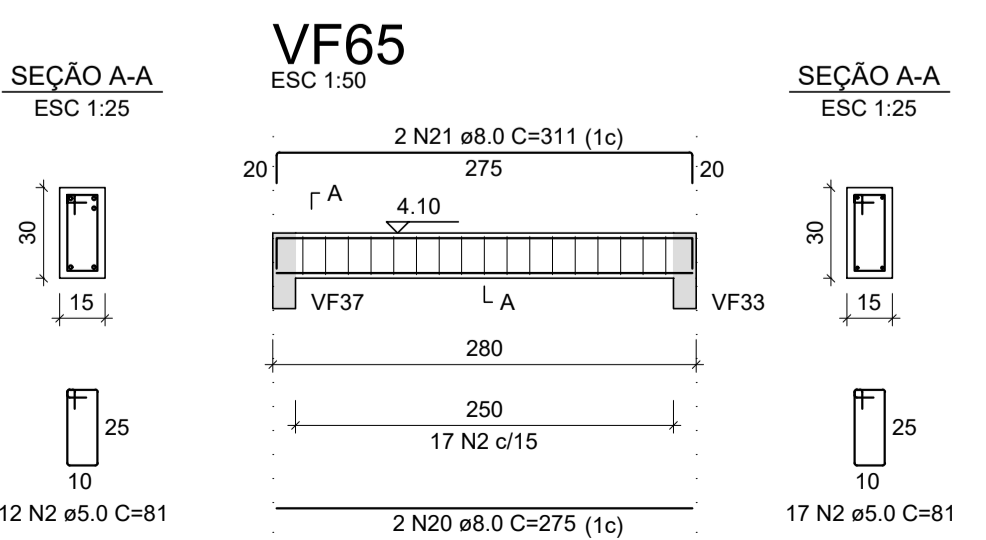
VF21
ESC 1:50



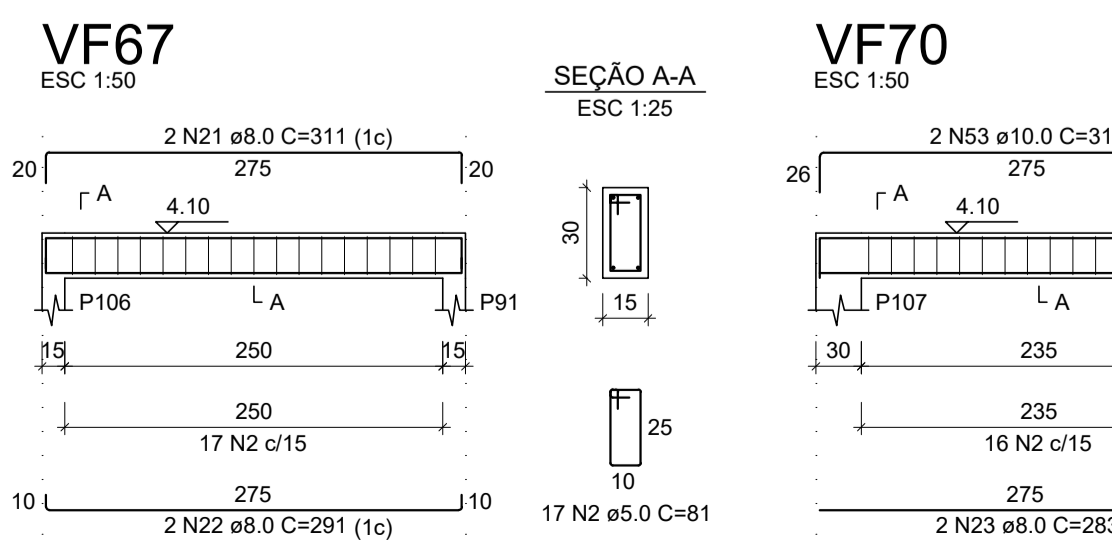
VF38
ESC 1:50



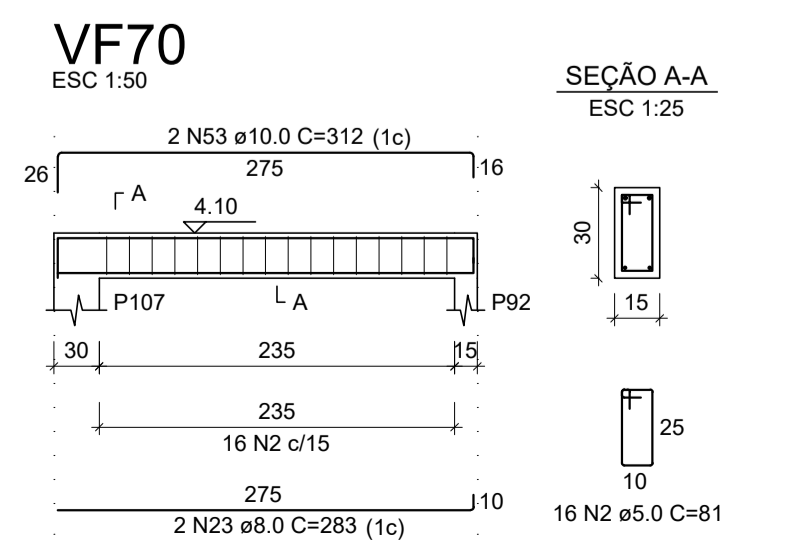
VF57
ESC 1:50



VF65
ESC 1:50



VF67
ESC 1:50



VF70
ESC 1:50



VF76
ESC 1:50

RESUMO DO AÇO

AÇO	DIAM (mm)	C.TOTAL (m)	QUANT + 10% (Barras)	UNIT	PESO + 10% (kg)
CA50	6.3	2.3	1	12 m	0.6
	8.0	110.4	11	12 m	47.9
	10.0	391.3	36	12 m	265.4
	12.5	50.6	5	12 m	53.6
CA60	5.0	608.2	-	rolo (170 kg)	103.1
PESO TOTAL (kg)					
CA50					367.5
CA60					103.1

Volume de concreto (C-25) = 8.78 m³
Área de forma = 136.30 m²



DAC Engenharia

Rua Miguel Vianna, nº 81, Sala 12
Bairro Morro Chic
CEP: 37500-080 - Itajubá / MG
Tel: (35) 3623-5720
www.dacengenharia.com.br

GERÊNCIA DE PROJETOS: DENIS DE SOUZA SILVA CREA: MG-127.216/D
COORDENAÇÃO DE PROJETOS: ALOISIO CAETANO FERREIRA CREA: MG-97.132/D
RESPONSÁVEL TÉCNICO: ENGR. CIVIL FLÁVIA C. BARBOSA CREA: MG-187.842/D
DESENHO: WILLIAM BARADEL LARI

IMPLANTAÇÃO DO CEMAPA E CENTRO POP

ENDEREÇO: RUA PROJETADA, BAIRRO SANTA CECÍLIA, POUSO ALEGRE - MINAS GERAIS

ASSUNTO: PROJETO ESTRUTURAL DE CONCRETO ARMADO FORMAS E FERRAGENS VIGAS

DISCIPLINA: ESTRUTURAL
FASE DO PROJETO: EXECUTIVO
FOLHA Nº: 19/28