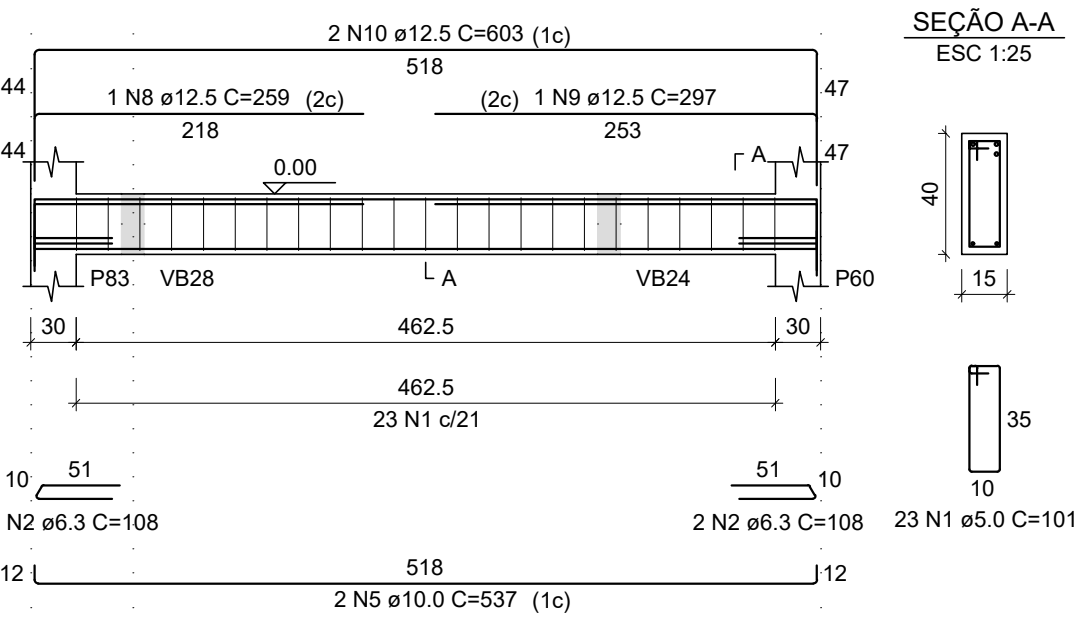


PROJETO ESTRUTURAL - CEMAPA

ESCALA INDICADA

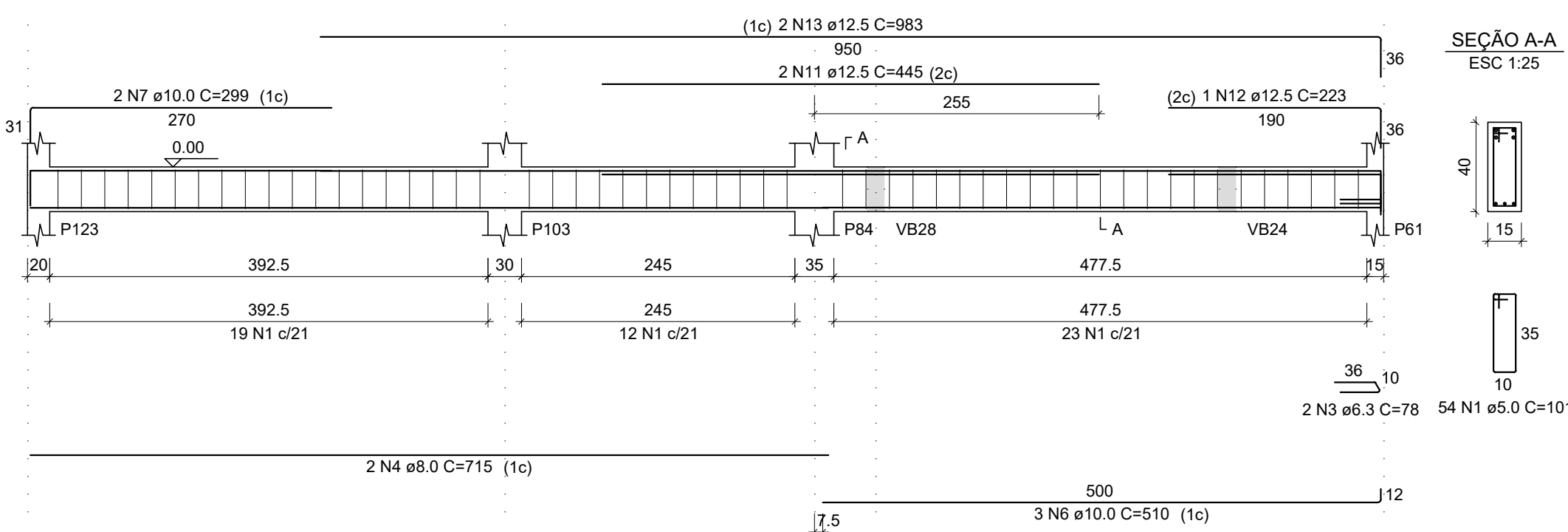
VB90

ESC 1:50



VB92

ESC 1:50



RELAÇÃO DO AÇO

AÇO	N	DIAM (mm)	QUANT	C.UNIT (cm)	C.TOTAL (cm)
CA60	1	5.0	77	101	7777
CA50	2	6.3	4	108	432
	3	6.3	2	78	156
	4	8.0	2	715	1430
	5	10.0	2	537	1074
	6	10.0	3	510	1530
	7	10.0	2	299	598
	8	12.5	1	259	259
	9	12.5	1	297	297
	10	12.5	2	603	1206
	11	12.5	2	445	890
	12	12.5	1	223	223
	13	12.5	2	983	1966

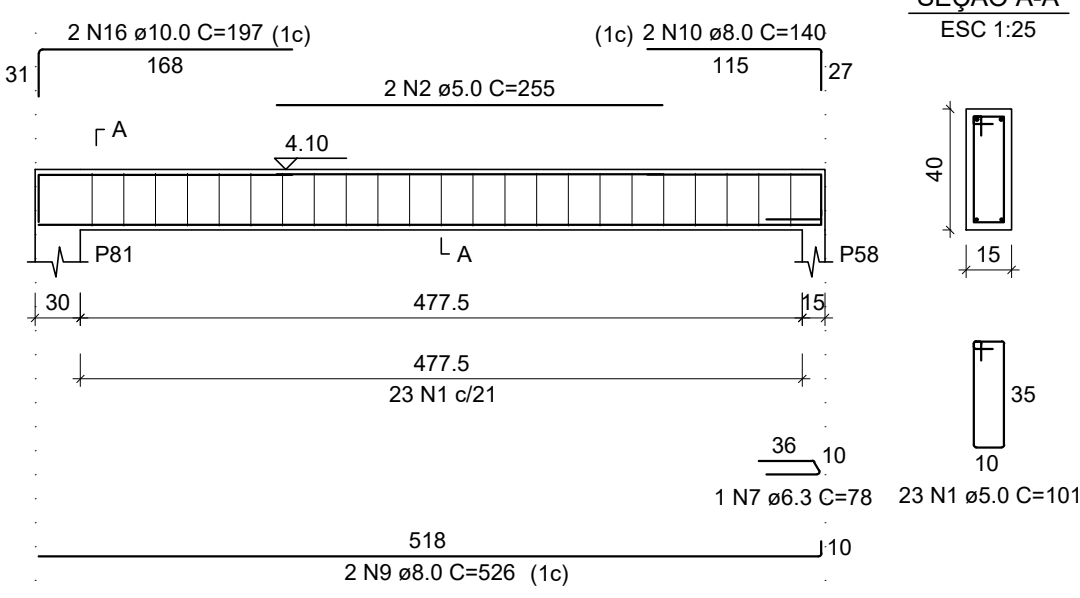
RESUMO DO AÇO

AÇO	DIAM (mm)	C.TOTAL (m)	QUANT + 10% (Barras)	UNIT	PESO + 10% (kg)
CA50	6.3	5.9	1	12 m	1.6
	8.0	14.3	2	12 m	6.2
	10.0	32	3	12 m	21.7
	12.5	48.4	5	12 m	51.3
CA60	5.0	77.8	-	rolo (170 kg)	13.2
PESO TOTAL (kg)					
CA50	80.8				
CA60	13.2				

Volume de concreto (C-25) = 1.04 m³  
Área de forma = 16.51 m²

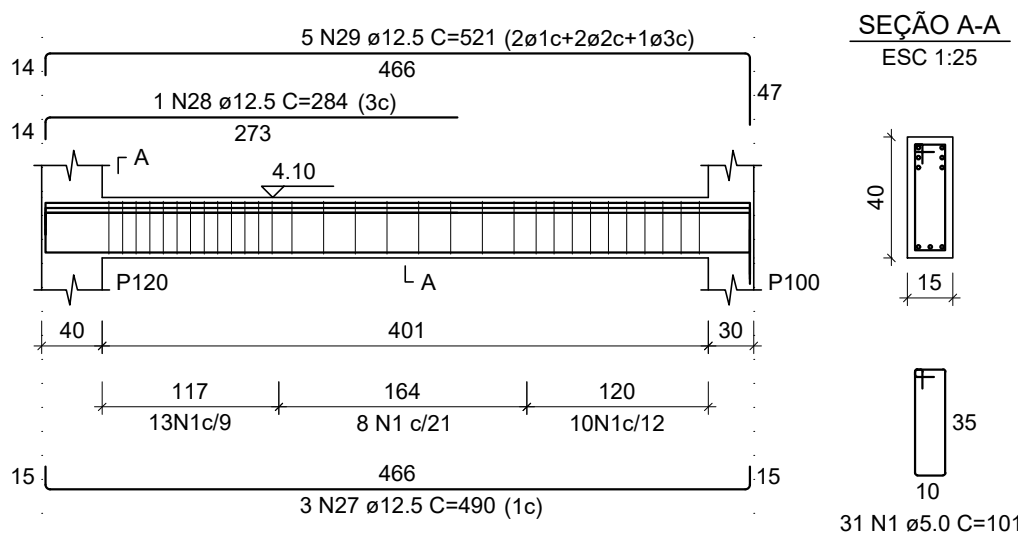
VF89

ESC 1:50



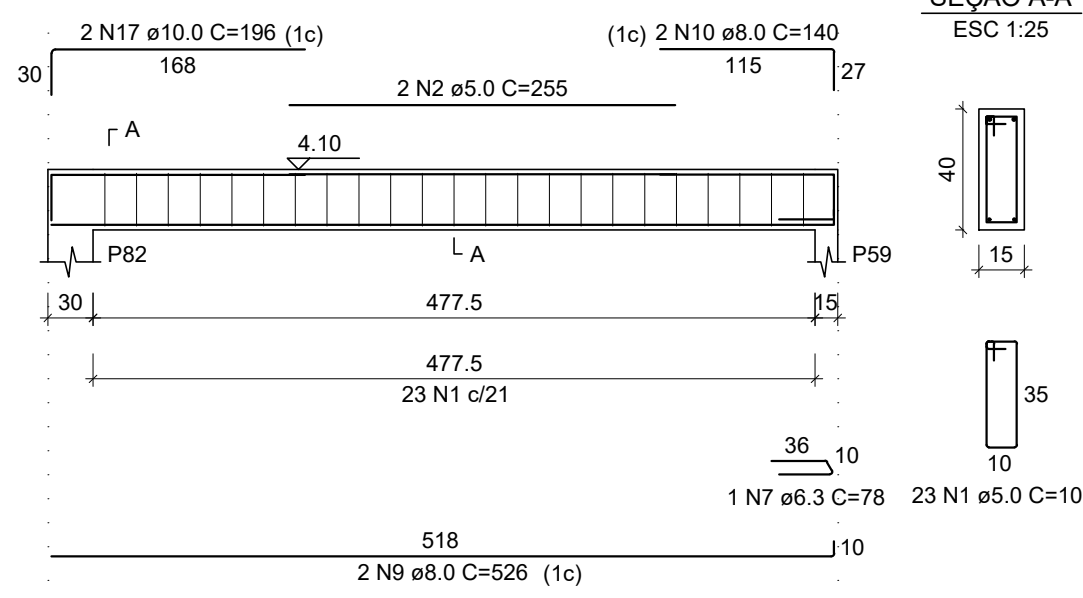
VF90

ESC 1:50



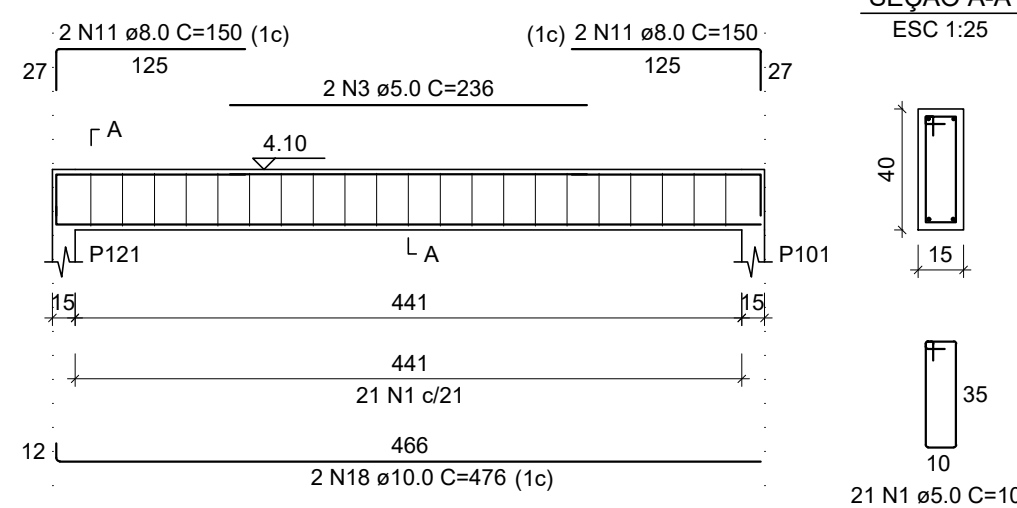
VF91

ESC 1:50



VF92

ESC 1:50



RELAÇÃO DO AÇO

AÇO	N	DIAM (mm)	QUANT	C.UNIT (cm)	C.TOTAL (cm)
CA60	1	5.0	148	101	14948
	2	5.0	4	255	1020
	3	5.0	2	236	472
	4	5.0	18	121	2178
	5	5.0	61	131	7991
	6	5.0	2	173	346
	7	6.3	2	78	156
	8	6.3	2	93	186
	9	8.0	4	526	2104
	10	8.0	4	140	560
	11	8.0	4	150	600
	12	8.0	2	466	932
	13	8.0	2	726	1452
	14	8.0	2	743	1486
	15	8.0	4	298	1192
	16	10.0	2	197	394
	17	10.0	2	196	392
	18	10.0	2	476	952
	19	10.0	2	518	1036
	20	10.0	2	567	1134
	21	10.0	2	489	978
	22	10.0	2	523	1046
	23	10.0	2	220	440
	24	10.0	2	194	388
	25	10.0	2	722	1444
	26	10.0	2	771	1542
	27	12.5	3	490	1470
	28	12.5	1	284	284
	29	12.5	5	521	2605

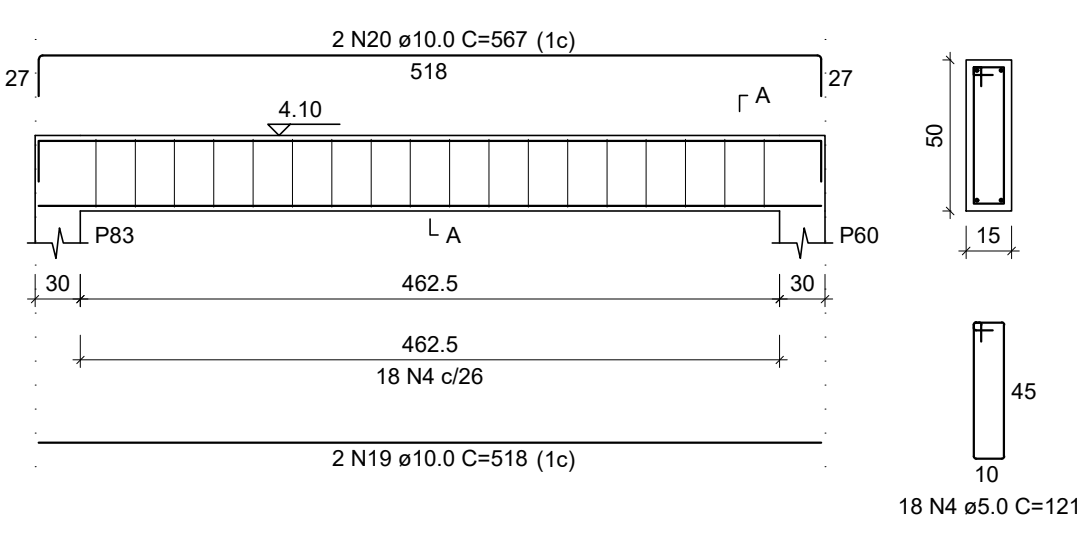
RESUMO DO AÇO

AÇO	DIAM (mm)	C.TOTAL (m)	QUANT + 10% (Barras)	UNIT	PESO + 10% (kg)
CA50	6.3	3.4	1	12 m	0.9
	8.0	83.3	8	12 m	36.1
	10.0	97.5	9	12 m	66.1
	12.5	43.5	4	12 m	45.2
CA60	5.0	289.6	-	rolo (170 kg)	45.7
PESO TOTAL (kg)					
CA50	149.3				
CA60	45.7				

Volume de concreto (C-25) = 3.54 m³  
Área de forma = 51.04 m²

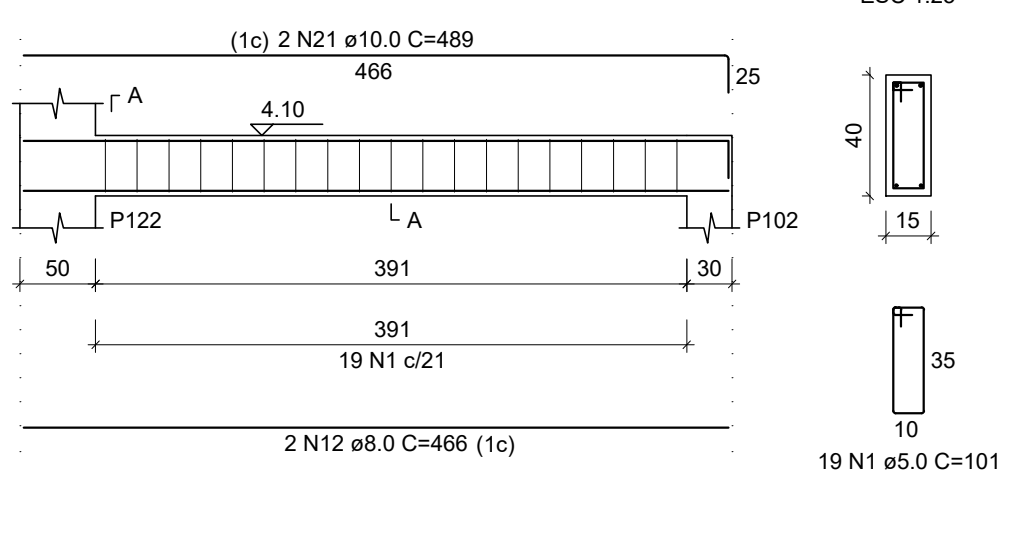
VF93

ESC 1:50



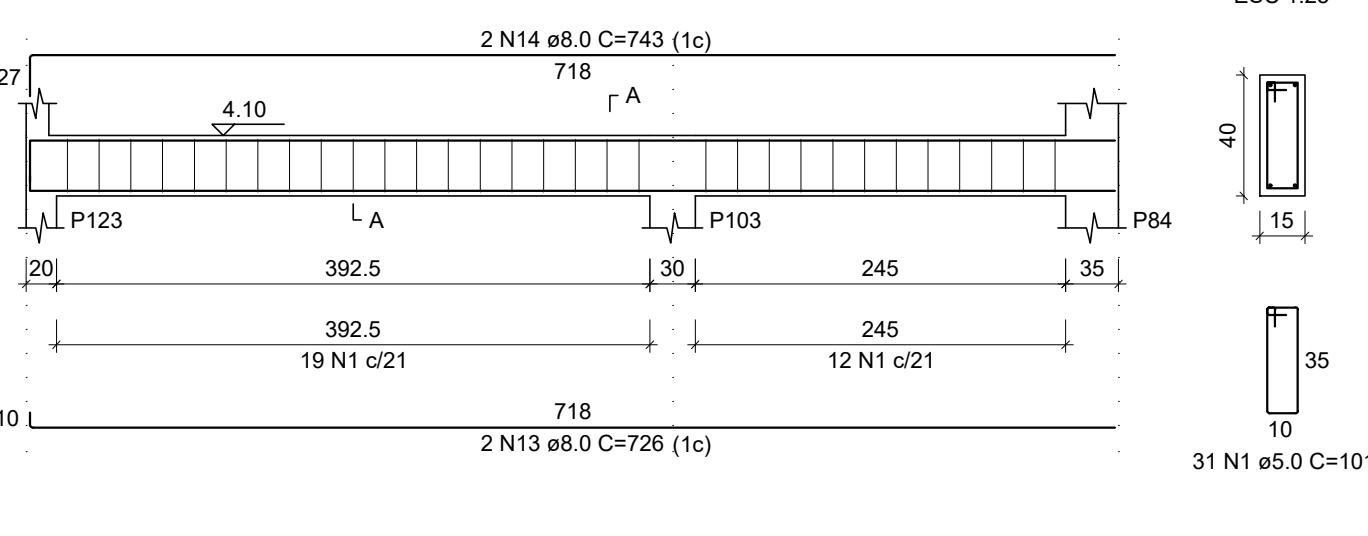
VF94

ESC 1:50



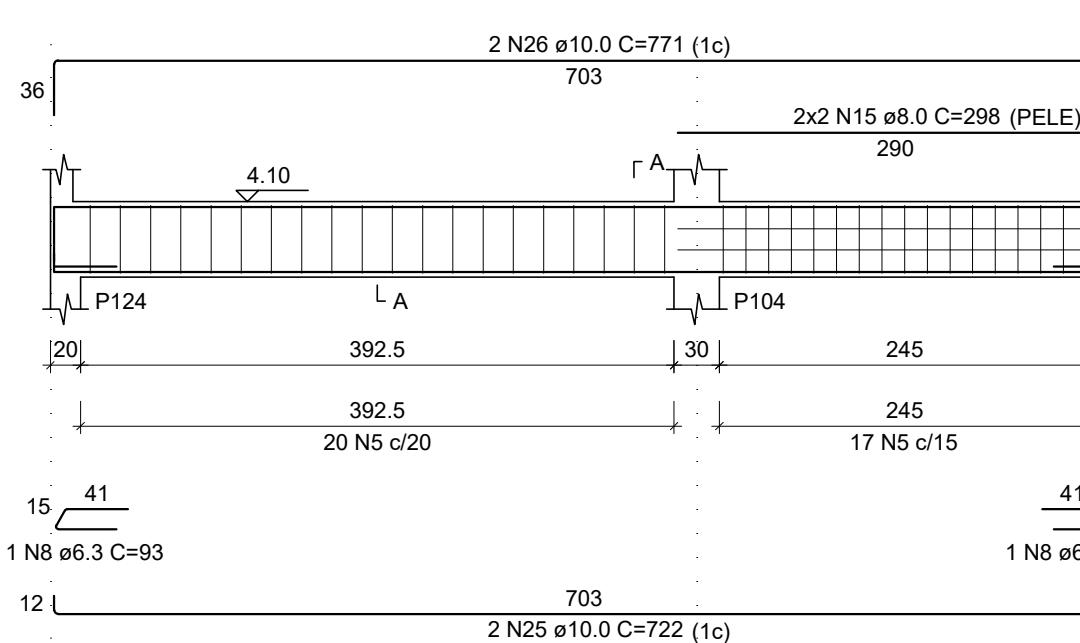
VF95

ESC 1:50



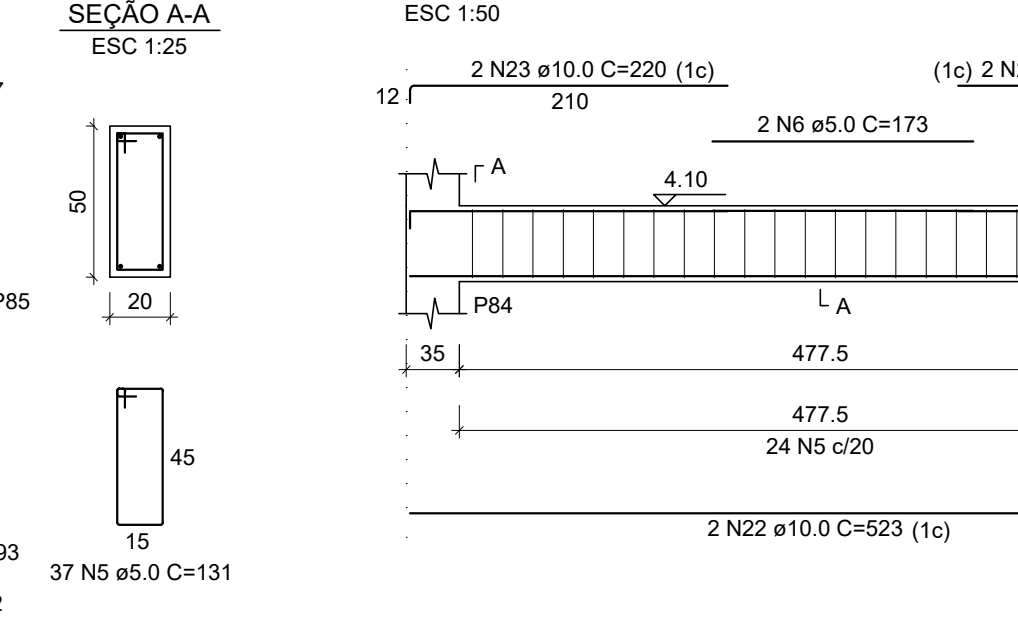
VF97

ESC 1:50



VF96

ESC 1:50



REV. 00	13/04/20	EMISSÃO INICIAL	DAC
REVISÃO:	DATA :	DESCRIÇÃO:	RESP.:



 Rua Miguel Vianna, nº 81, Sala 12 Bairro Morro Chic CEP: 37500-080 - Itajubá / MG Tel: (35) 3623-5720 www.dacengenharia.com.br	GERÊNCIA DE PROJETOS	DENIS DE SOUZA SILVA	CREA: MG-127.216/D
	COORDENAÇÃO DE PROJETOS	ALDOISO CAETANO FERREIRA	CREA: MG-97.132/D
	RESPONSÁVEL TÉCNICO	ENGR. CIVIL FLÁVIA C. BARBOSA	CREA: MG-187.842/D
	DESENHO	WILLIAM BARADEL LARI	

EMPREENDIMENTO		DISCIPLINA
IMPLANTAÇÃO DO CEMAPA E CENTRO POP		ESTRUTURAL
ENDEREÇO	RUA PROJETADA, BAIRRO SANTA CECÍLIA POUSO ALEGRE - MINAS GERAIS	FASE DO PROJETO
ASSUNTO	PROJETO ESTRUTURAL DE CONCRETO ARMADO FORMAS E FERRAGENS VIGAS	EXECUTIVO
DATA INICIAL	ESCALA	FOLHA Nº
13/04/2020	INDICADA	18/28
REVISÃO	ROO	ARQUIVO
DAC-PMPA-CEPOP-PE-EST-ROO.DWG		