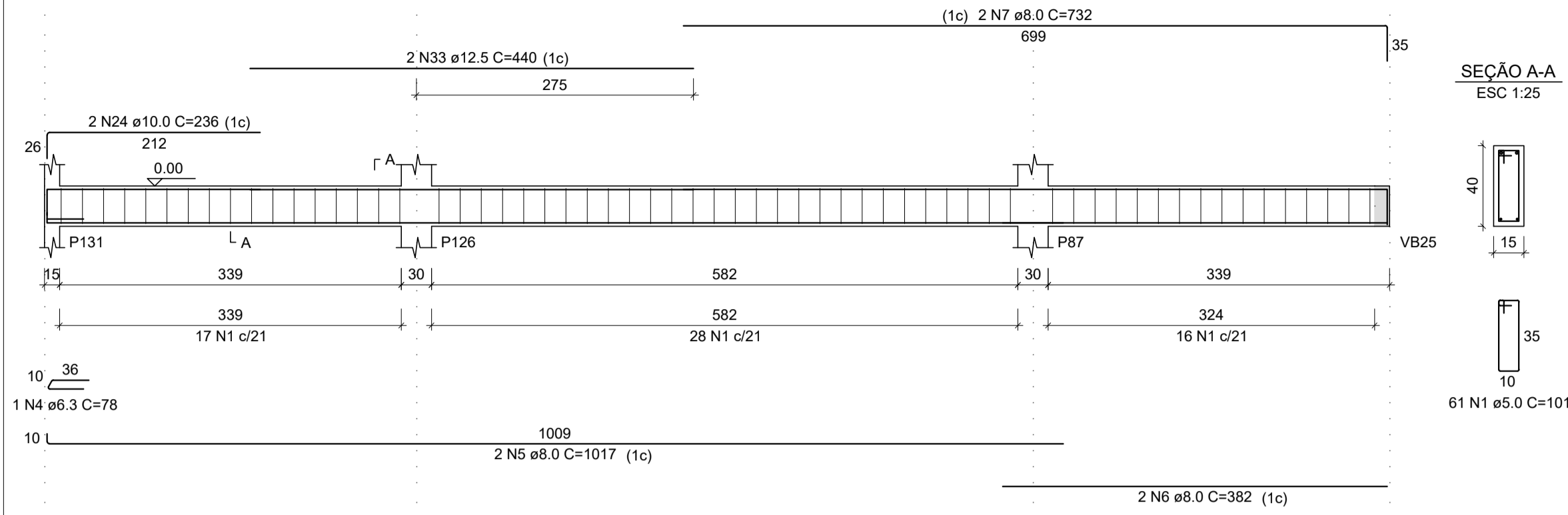
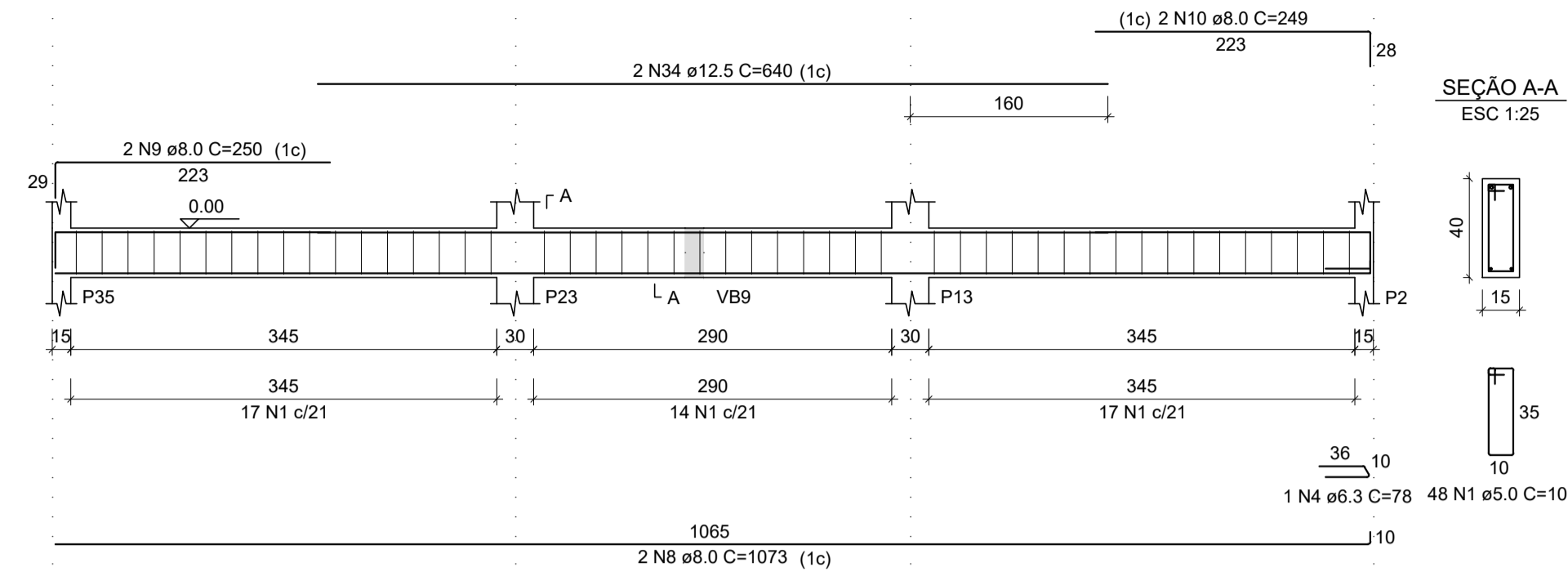


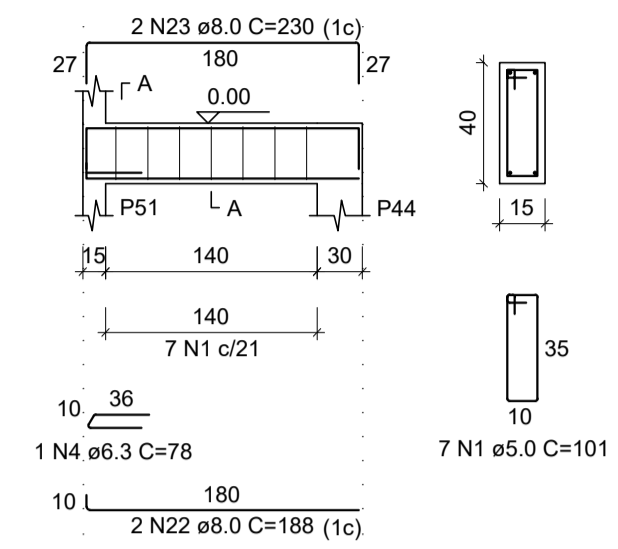
**VB48**  
ESC 1:50



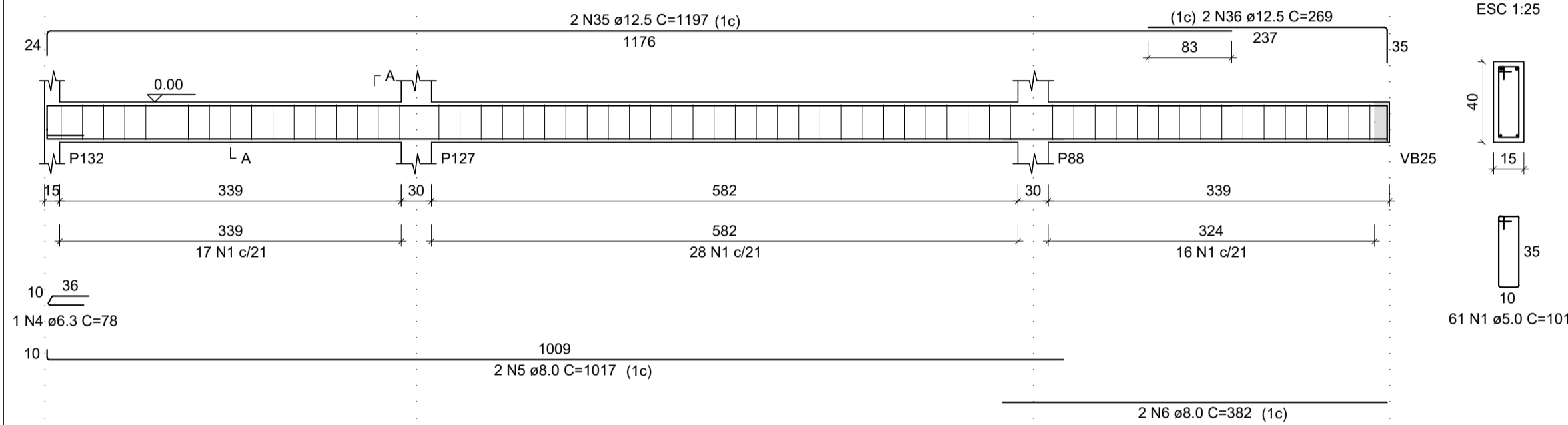
**VB51**  
ESC 1:50



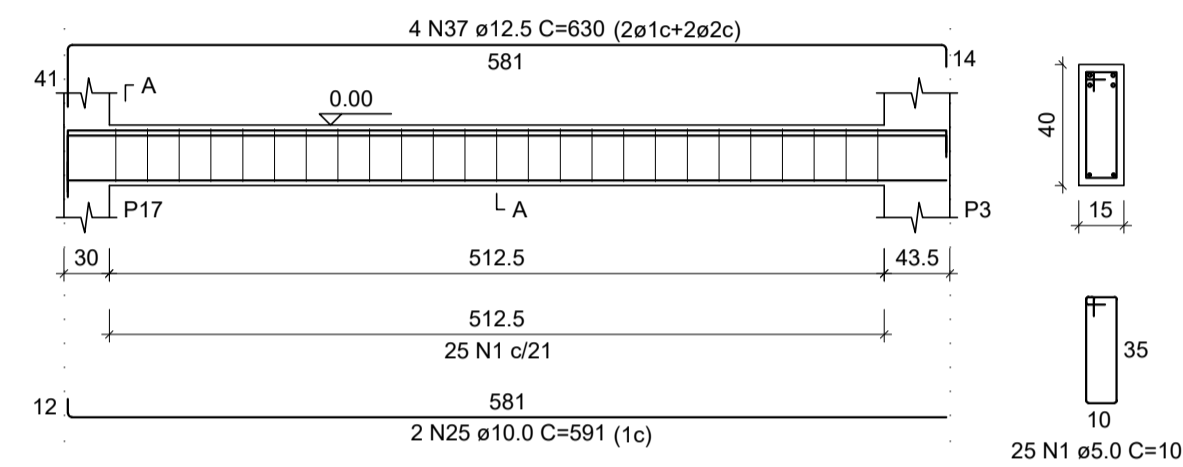
**VB69**  
ESC 1:50



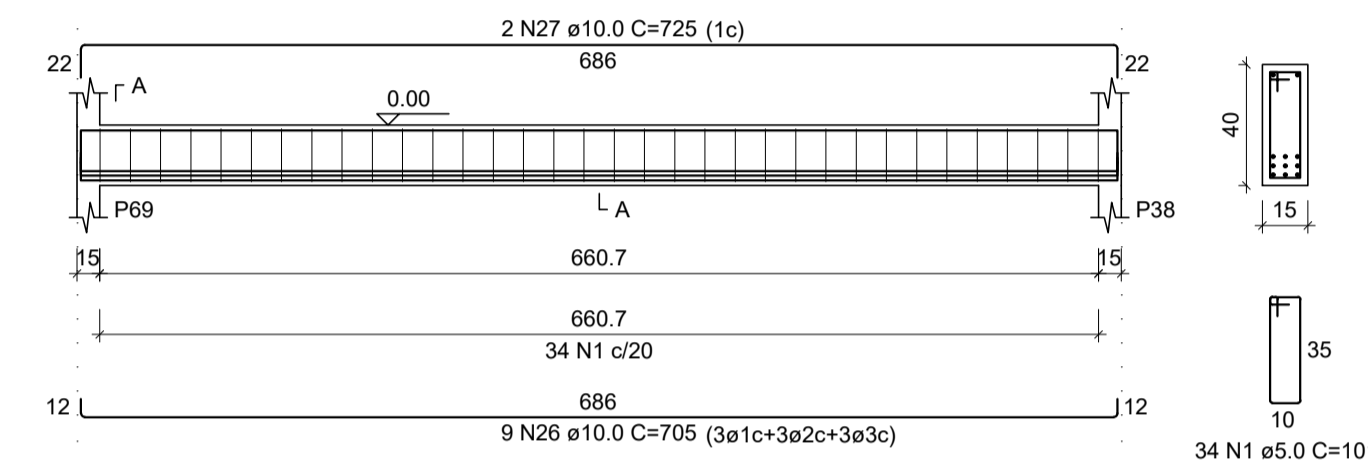
**VB53**  
ESC 1:50



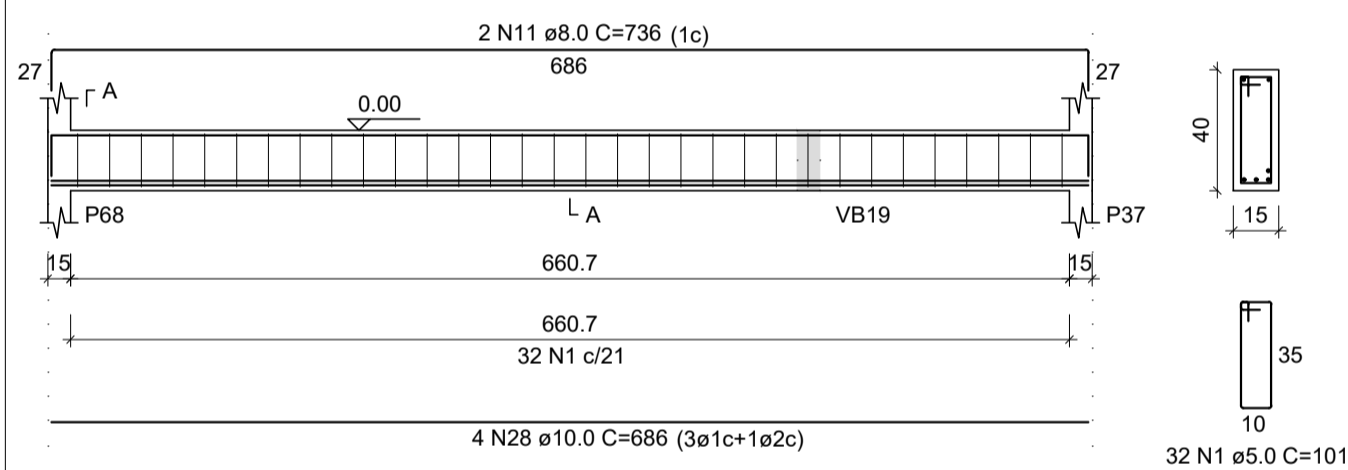
**VB54**  
ESC 1:50



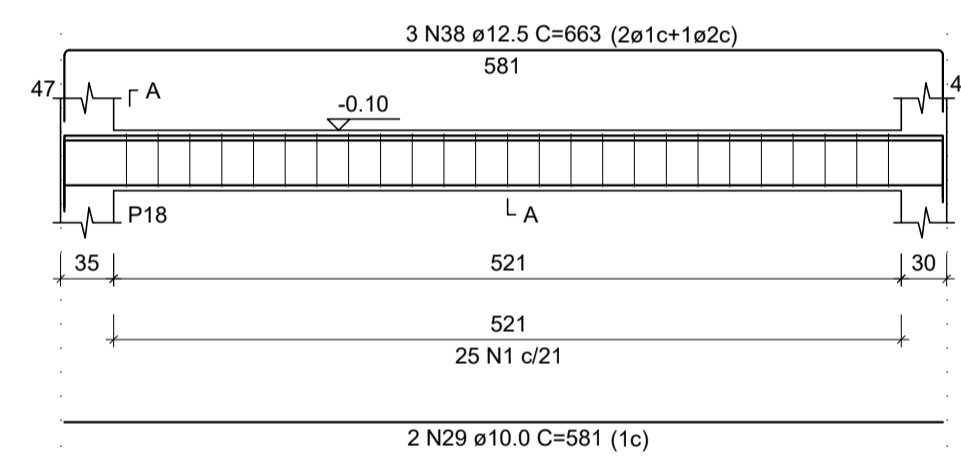
**VB55**  
ESC 1:50



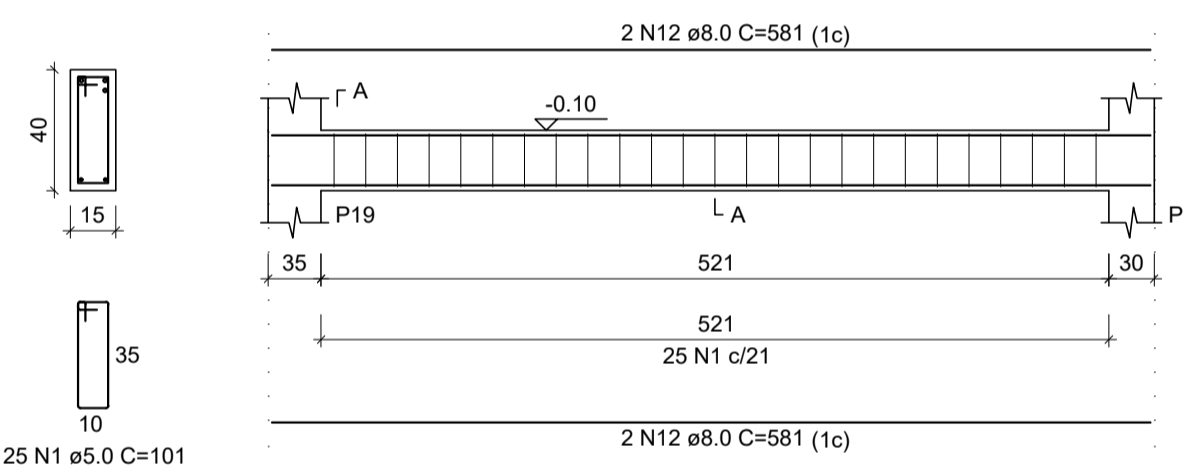
**VB56**  
ESC 1:50



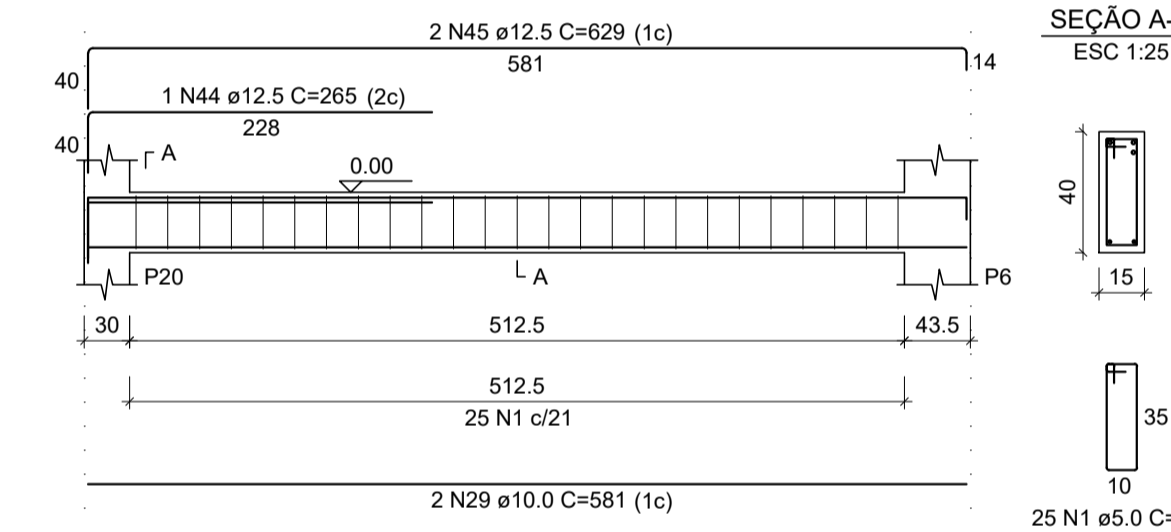
**VB59**  
ESC 1:50



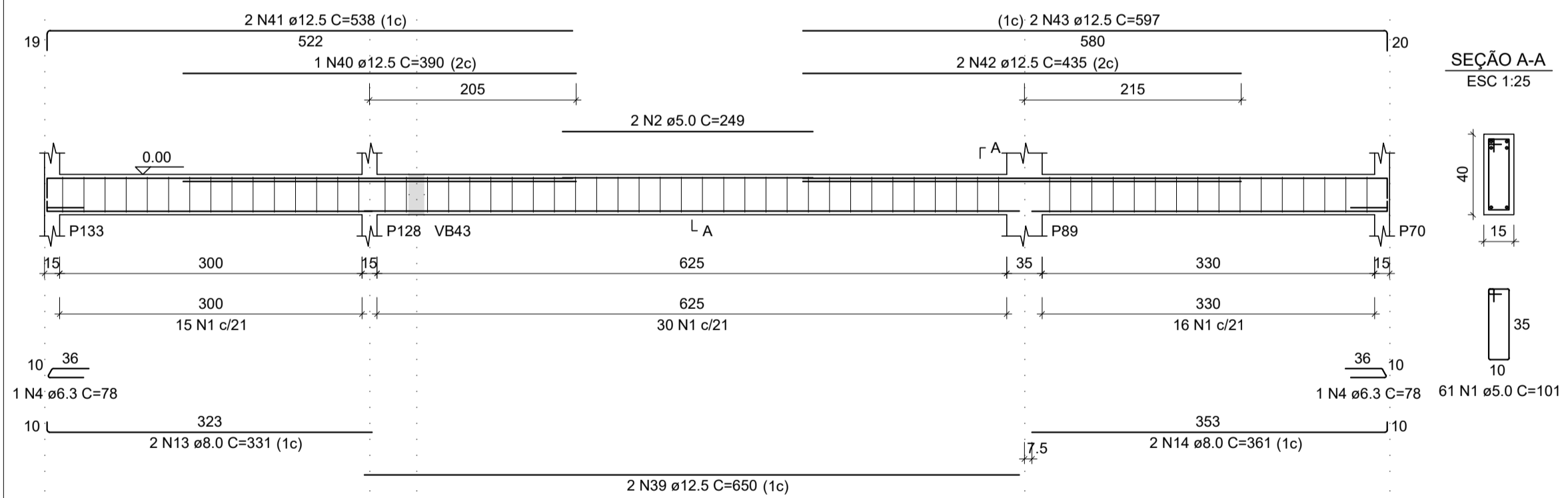
**VB60**  
ESC 1:50



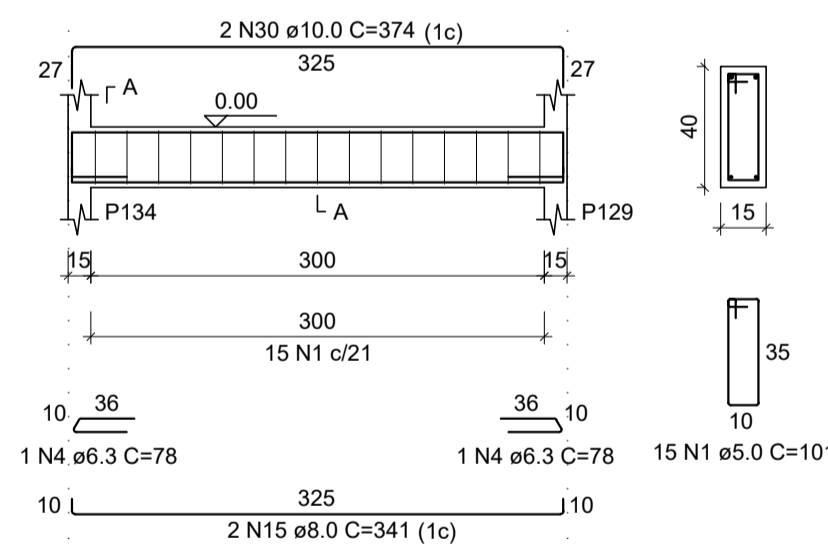
**VB62**  
ESC 1:50



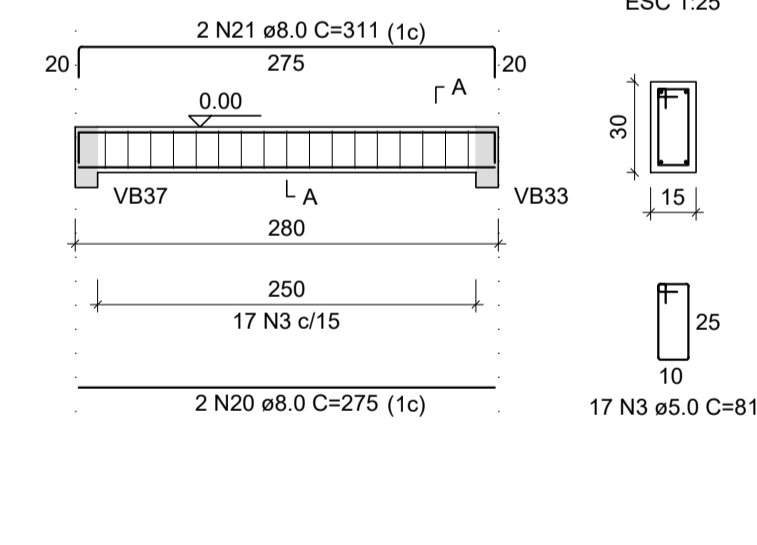
**VB61**  
ESC 1:50



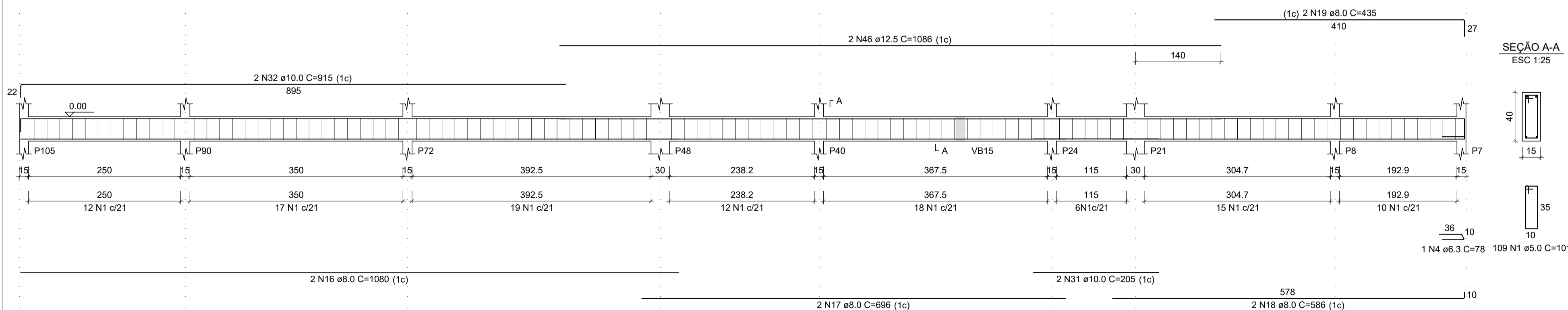
**VB63**  
ESC 1:50



**VB65**  
ESC 1:50



**VB64**  
ESC 1:50



RELAÇÃO DO AÇO

VB48	VB51	VB53
VB54	VB55	VB56
VB59	VB60	VB61
VB63	VB65	VB64

AÇO	N	DIAM (mm)	QUANT	C.UNIT (cm)	C.TOTAL (cm)
CA60	1	5.0	528	101	53328
	2	5.0	2	249	498
	3	5.0	17	81	1377
CA50	4	6.3	9	78	702
	5	8.0	4	1017	4068
	6	8.0	4	392	1528
	7	8.0	2	732	1464
	8	8.0	2	1073	2146
	9	8.0	2	250	500
	10	8.0	2	249	498
	11	8.0	2	736	1472
	12	8.0	4	581	2324
	13	8.0	2	331	662
	14	8.0	2	361	722
	15	8.0	2	341	682
	16	8.0	2	1080	2160
	17	8.0	2	696	1392
	18	8.0	2	586	1172
	19	8.0	2	435	870
	20	8.0	2	275	550
	21	8.0	2	311	622
	22	8.0	2	188	376
	23	8.0	2	230	460
	24	10.0	2	236	472
	25	10.0	2	591	1182
	26	10.0	9	705	6345
	27	10.0	2	725	1450
	28	10.0	4	686	2744
	29	10.0	4	581	2324
	30	10.0	2	374	748
	31	10.0	2	205	410
	32	10.0	2	915	1830
	33	12.5	2	440	880
	34	12.5	2	640	1280
	35	12.5	2	1197	2394
	36	12.5	2	269	538
	37	12.5	4	630	2520
	38	12.5	3	663	1989
	39	12.5	2	650	1300
	40	12.5	1	390	390
	41	12.5	2	538	1076
	42	12.5	2	435	870
	43	12.5	2	597	1194
	44	12.5	1	265	265
	45	12.5	2	629	1258
	46	12.5	2	1086	2172

RESUMO DO AÇO

AÇO	DIAM (mm)	C.TOTAL (m)	QUANT + 10% (Barras)	UNIT	PESO + 10% (kg)
CA50	6.3	7	1	12 m	1.9
	8.0	236.7	22	12 m	102.7
	10.0	175.1	17	12 m	118.7
CA60	12.5	181.3	17	12 m	192.1
	5.0	552	-	rolo (170 kg)	93.6
PESO TOTAL (kg)					
CA50		415.4			
CA60		93.6			

Volume de concreto (C-25) = 7.14 m³  
Área de forma = 113.16 m²

REV. 00	13/04/20	EMISSÃO INICIAL	DAC
REVISÃO:	DATA :	DESCRIÇÃO:	RESP.:



 Rua Miguel Vianna, nº 81, Sala 12 Bairro Morro Chic CEP: 37500-080 - Itajubá / MG Tel: (35) 3623-5720 www.dacengenharia.com.br	GERÊNCIA DE PROJETOS <b>DENIS DE SOUZA SILVA</b> CREA: MG-127.216/D
	COORDENAÇÃO DE PROJETOS <b>ALOISIO CAETANO FERREIRA</b> CREA: MG-97.132/D
RESPONSÁVEL TÉCNICO <b>ENGR. CIVIL FLÁVIA C. BARBOSA</b> CREA: MG-187.842/D	PROJETO <b>WILLIAM BARADEL LARI</b>
DESENHO <b>WILLIAM BARADEL LARI</b>	

EMPREENDIMENTO <b>IMPLANTAÇÃO DO CEMAPA E CENTRO POP</b>	
ENDEREÇO RUA PROJETADA, BAIRRO SANTA CECÍLIA POUSO ALEGRE - MINAS GERAIS	DISCIPLINA <b>ESTRUTURAL</b>
ASSUNTO PROJETO ESTRUTURAL DE CONCRETO ARMADO FORMAS E FERRAGENS VIGAS	FASE DO PROJETO <b>EXECUTIVO</b>
	FOLHA Nº <b>16/28</b>