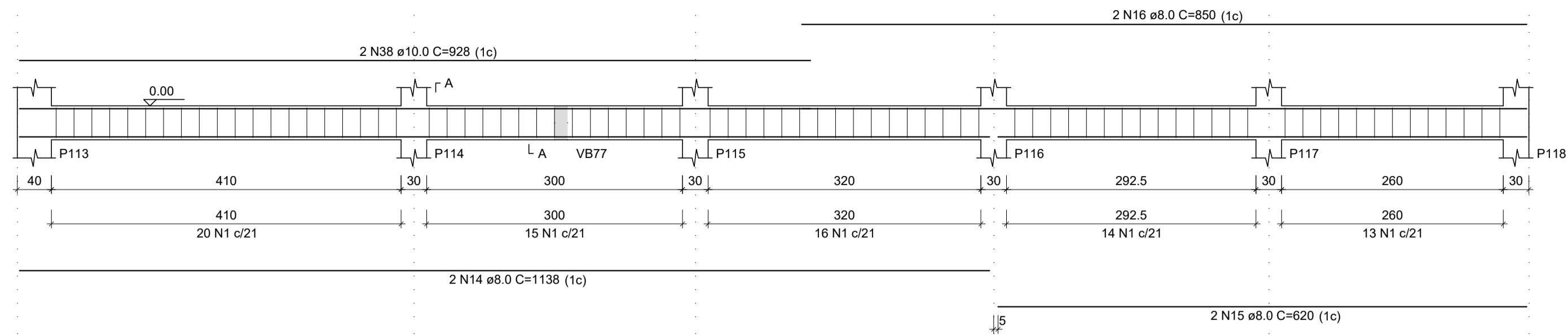


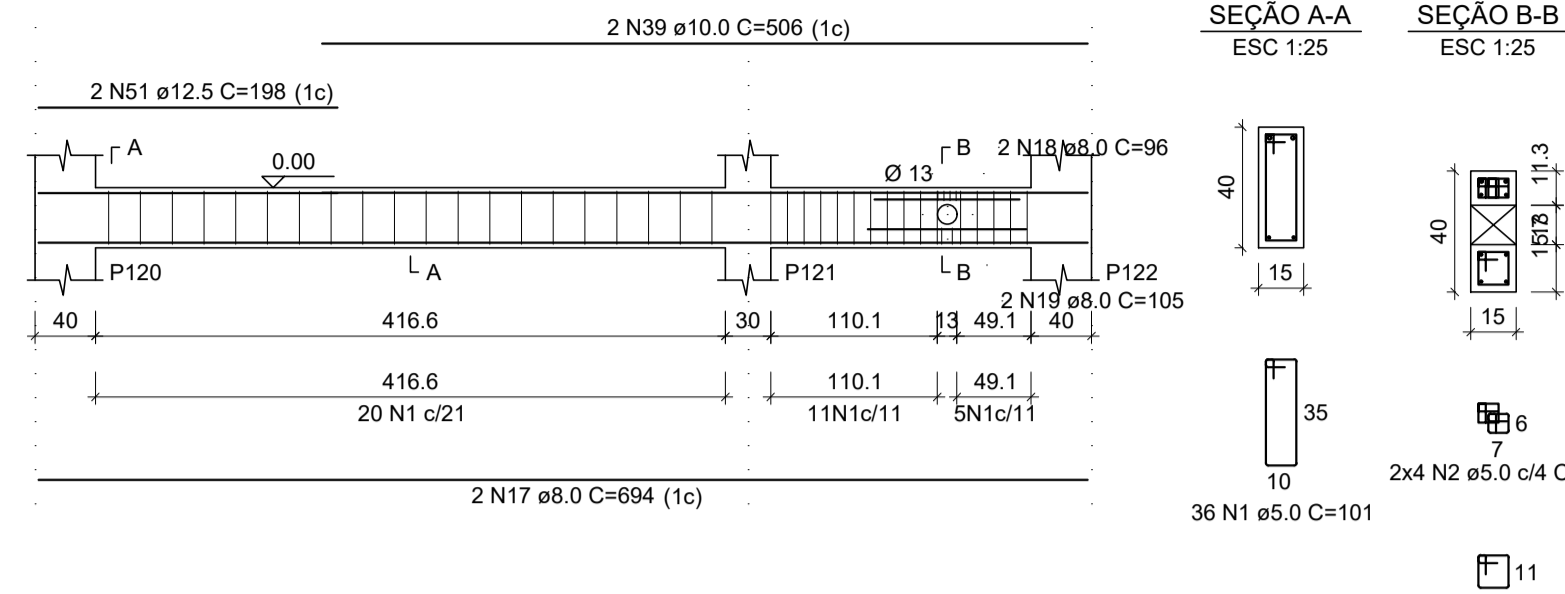
VB39

ESC 1:50



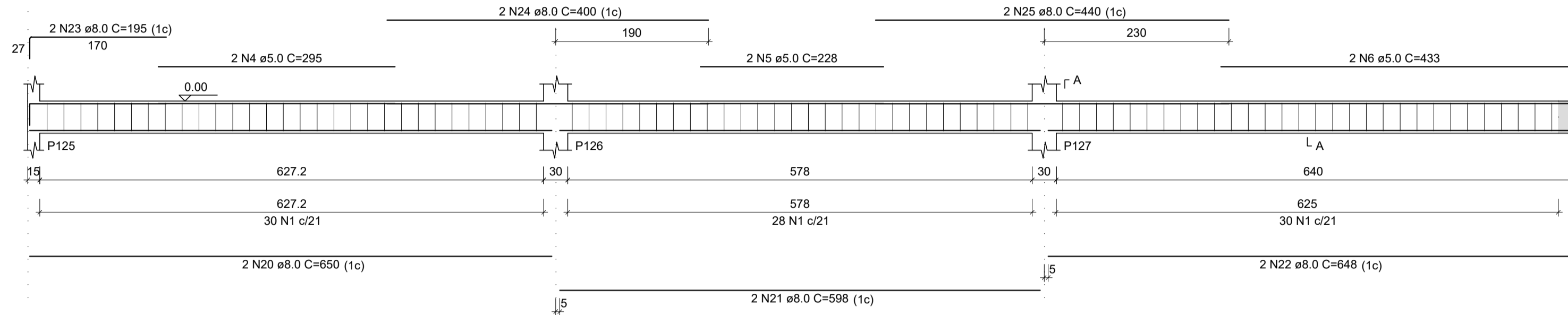
VB41

ESC 1:50



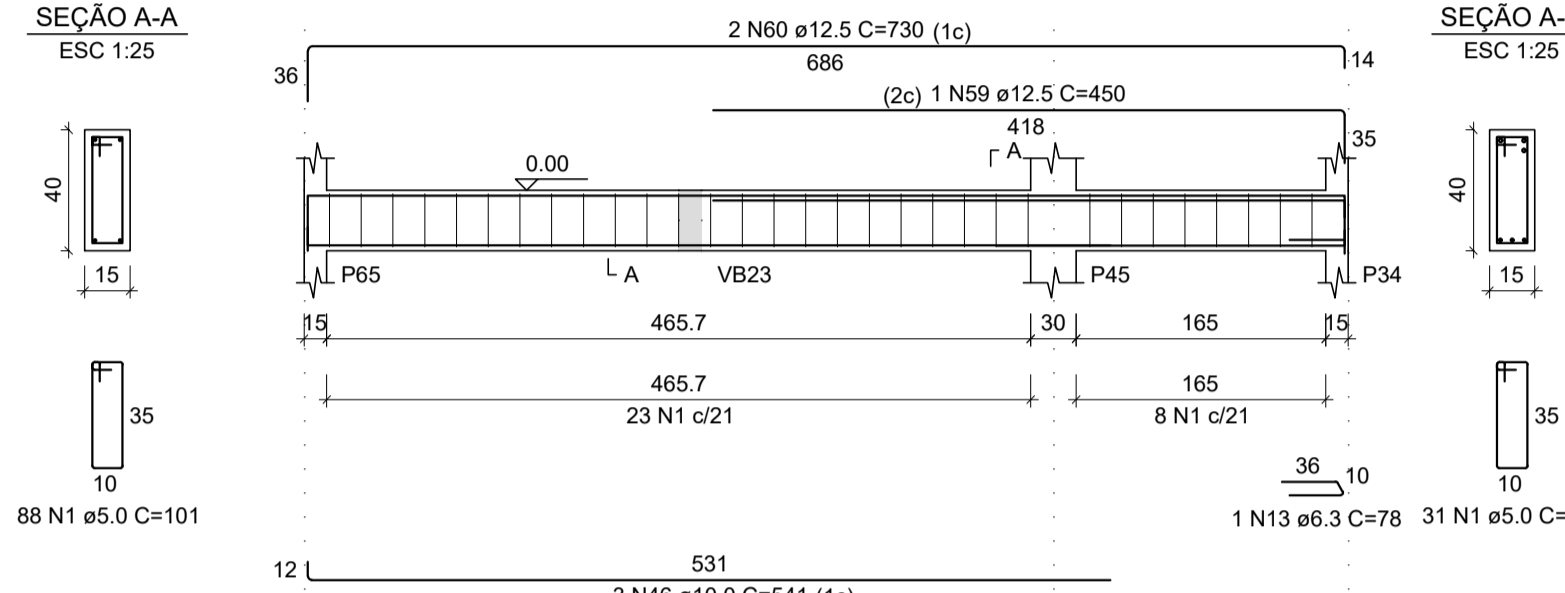
VB43

ESC 1:50



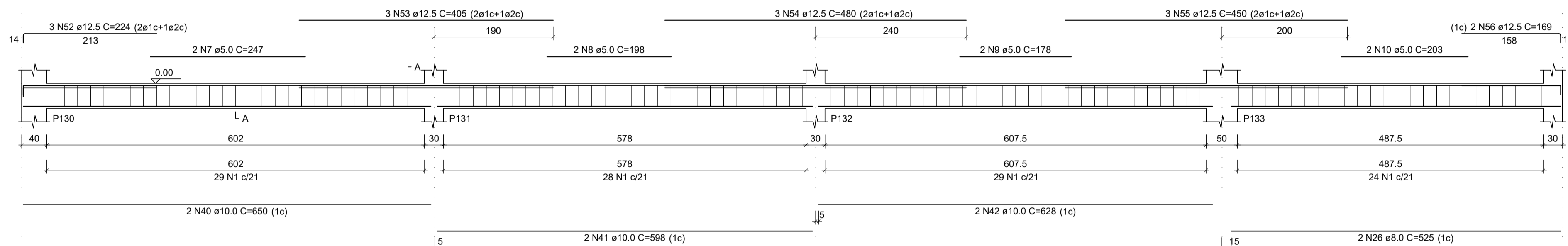
VB49

ESC 1:50



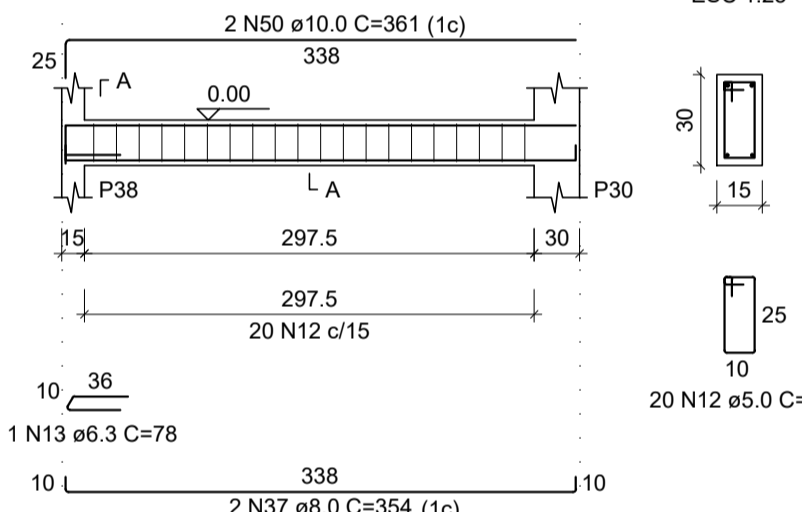
VB45

ESC 1:50



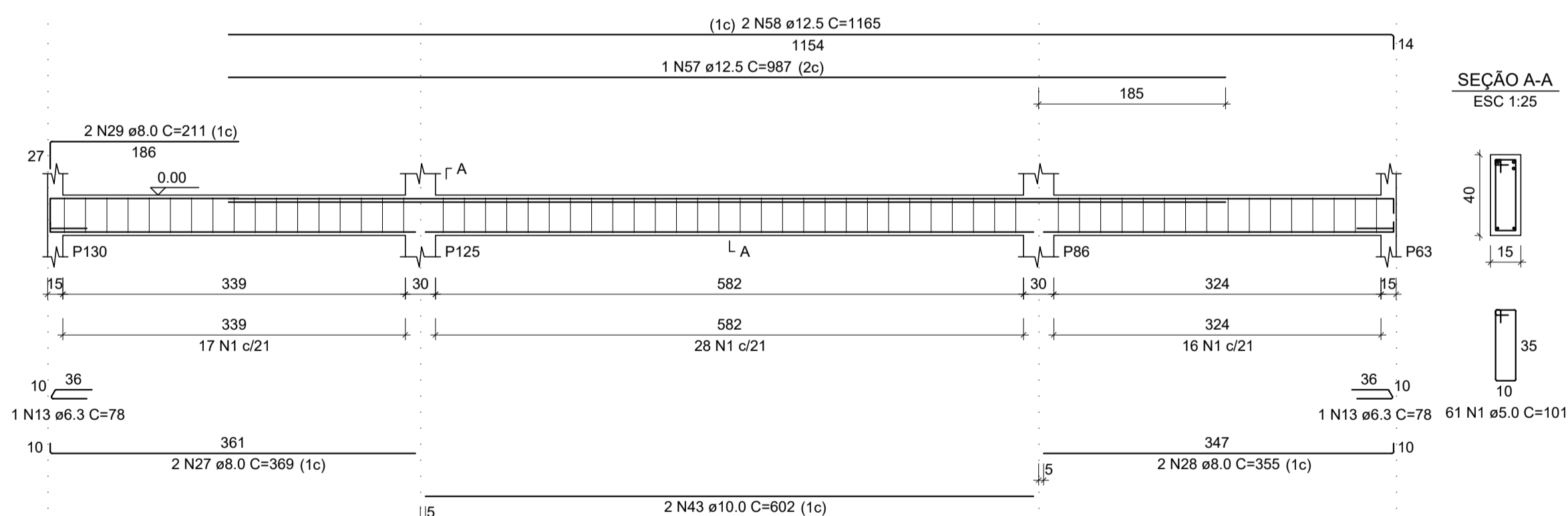
VB57

ESC 1:50



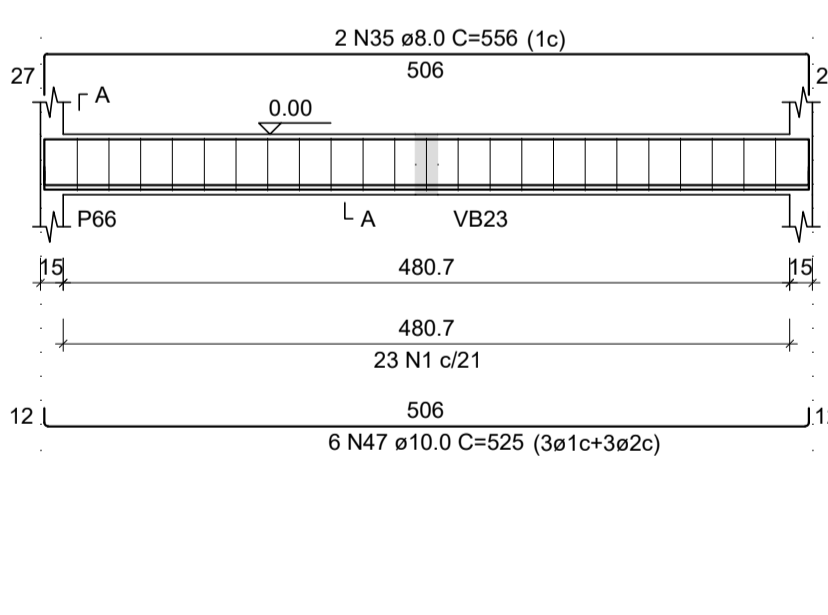
VB46

ESC 1:50



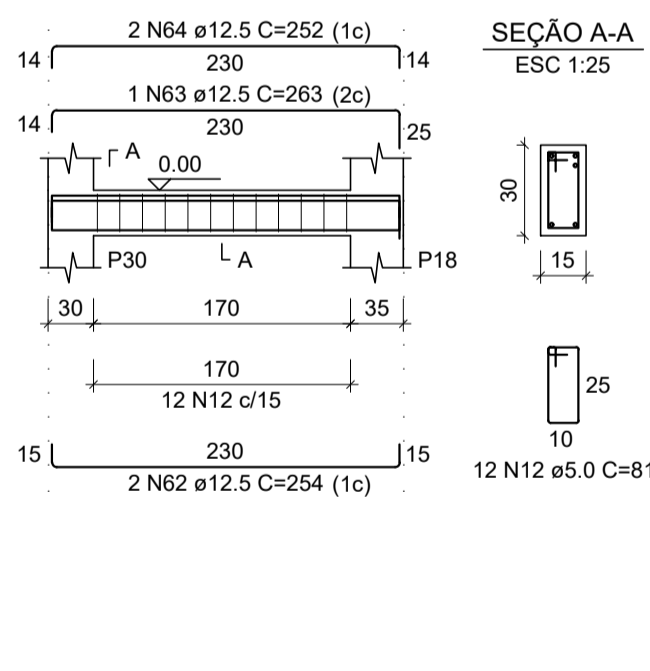
VB50

ESC 1:50



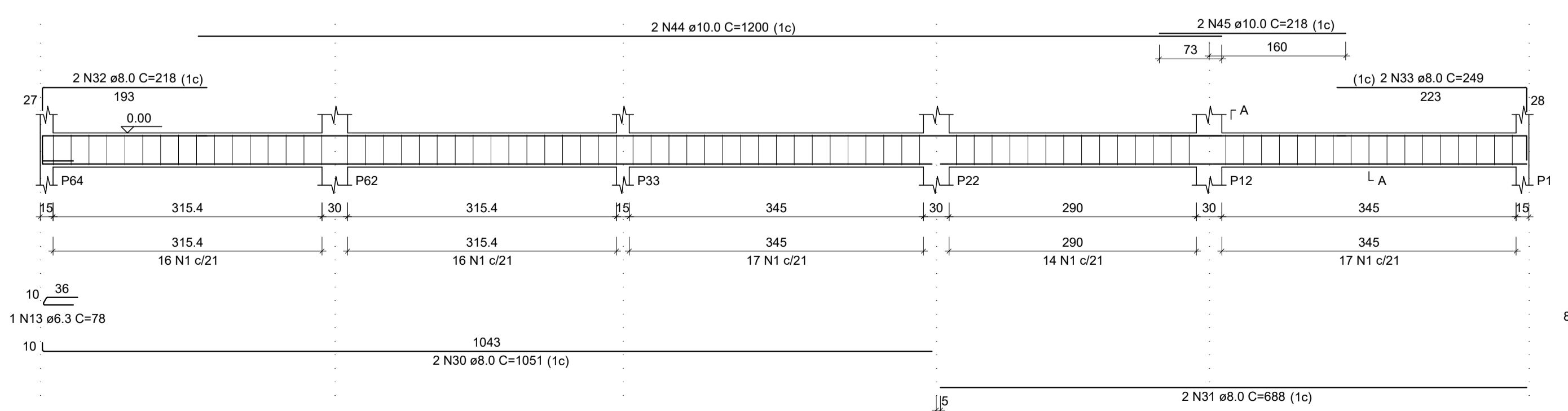
VB58

ESC 1:50



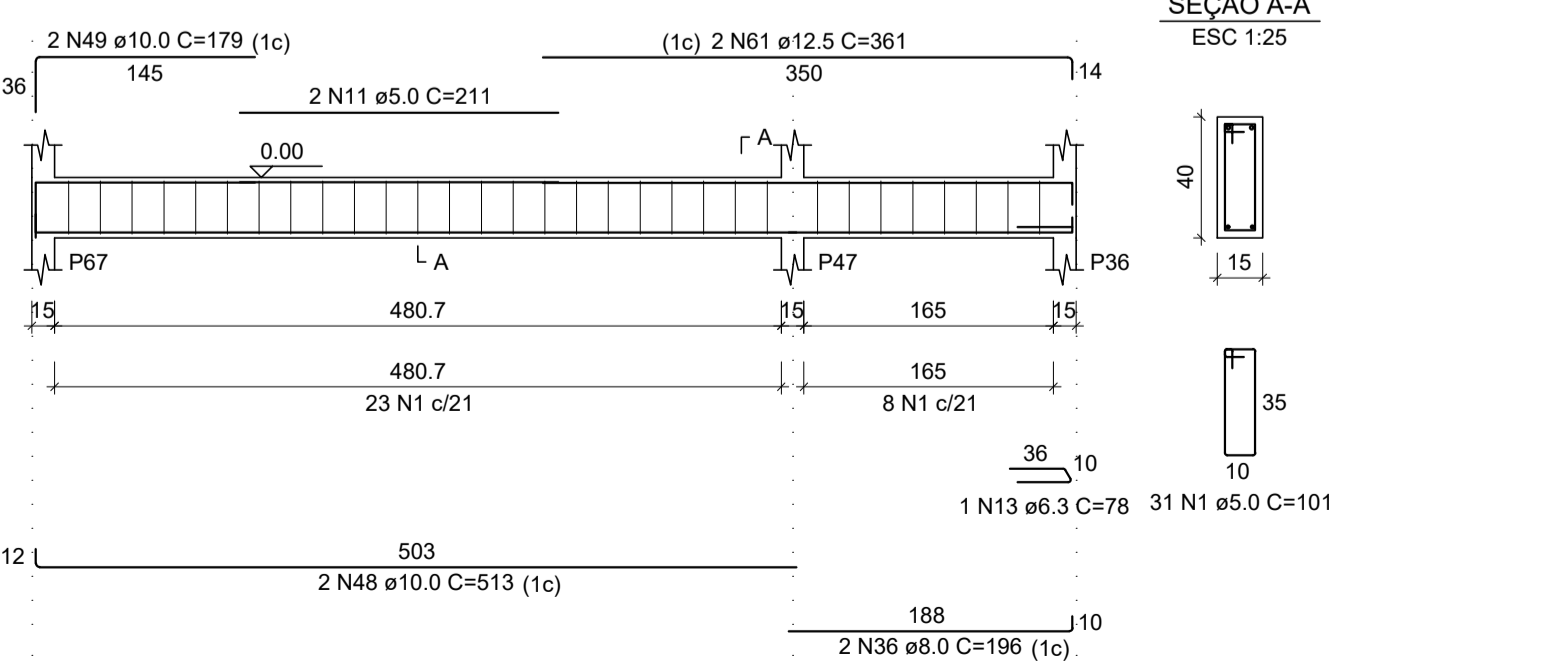
VB47

ESC 1:50



VB52

ESC 1:50



RELAÇÃO DO AÇO

CAÇO	N	DIAM (mm)	QUANT	C.UNIT (cm)	C.TOTAL (cm)
CA60	1	5.0	538	101	54338
	2	5.0	8	37	296
	3	5.0	2	53	106
	4	5.0	2	295	590
	5	5.0	2	228	456
	6	5.0	2	433	866
	7	5.0	2	247	494
	8	5.0	2	198	396
	9	5.0	2	178	356
	10	5.0	2	203	406
	11	5.0	2	211	422
	12	5.0	32	81	2592
CA50	13	6.3	6	78	468
	14	8.0	2	1138	2276
	15	8.0	2	620	1240
	16	8.0	2	850	1700
	17	8.0	2	694	1388
	18	8.0	2	96	192
	19	8.0	2	648	1296
	20	8.0	2	650	1300
	21	8.0	2	598	1196
	22	8.0	2	648	1296
	23	8.0	2	195	390
	24	8.0	2	400	800
	25	8.0	2	440	880
	26	8.0	2	525	1050
	27	8.0	2	369	738
	28	8.0	2	355	710
	29	8.0	2	421	842
	30	8.0	2	1051	2102
	31	8.0	2	888	1776
	32	8.0	2	218	436
	33	8.0	2	249	498
	34	8.0	2	238	476
	35	8.0	2	556	1112
	36	8.0	2	196	392
	37	8.0	2	354	708
	38	10.0	2	828	1656
	39	10.0	2	506	1012
	40	10.0	2	650	1300
	41	10.0	2	598	1196
	42	10.0	2	628	1256
	43	10.0	2	602	1204
	44	10.0	2	1200	2400
	45	10.0	2	218	436
	46	10.0	2	541	1082
	47	10.0	6	525	3150
	48	10.0	2	513	1026
	49	10.0	2	179	358
	50	10.0	2	361	722
	51	12.5	2	198	396
	52	12.5	3	224	672
	53	12.5	3	405	1215
	54	12.5	3	480	1440
	55	12.5	3	450	1350
	56	12.5	2	169	338
	57	12.5	1	987	987
	58	12.5	2	1165	2330
	59	12.5	1	450	450
	60	12.5	2	730	1460
	61	12.5	2	361	722
	62	12.5	2	254	508
	63	12.5	2	263	526
	64	12.5	2	252	504

RESUMO DO AÇO

CAÇO	DIAM (mm)	C.TOTAL (m)	QUANT + 10% (Barras)	UNIT	PESO + 10% (kg)
CA50	6.3	4.7	1	12 m	1.3
	8.0	228.9	21	12 m	99.3
	10.0	175.4	17	12 m	118.9
	12.5	126.4	12	12 m	133.9
CA60	5.0	613.2	-	rolo (170 kg)	104
PESO TOTAL (kg)					
CA50	353.4				
CA60	104				

Volume de concreto (C-25) = 7.35 m³
Área de forma = 116.61 m²

REV. 00	13/04/20	EMISSÃO INICIAL	DAC
REVISÃO:	DATA :	DESCRIÇÃO:	RESP.:



 Rua Miguel Vianna, nº 81, Sala 12 Bairro Morro Chic CEP: 37500-080 - Itajubá / MG Tel: (35) 3623-5720 www.dacengenharia.com.br	GERÊNCIA DE PROJETOS DENIS DE SOUZA SILVA CREA: MG-127.216/D
	COORDENAÇÃO DE PROJETOS ALOISIO CAETANO FERREIRA CREA: MG-97.132/D
	RESPONSÁVEL TÉCNICO ENGR. CIVIL FLÁVIA C. BARBOSA CREA: MG-187.842/D WILLIAM BARADEL LARI
	DESENHO WILLIAM BARADEL LARI

EMPREENDIMENTO IMPLANTAÇÃO DO CEMAPA E CENTRO POP	
ENDEREÇO RUA PROJETADA, BAIRRO SANTA CECÍLIA POUSO ALEGRE - MINAS GERAIS	DISCIPLINA ESTRUTURAL
ASSUNTO PROJETO ESTRUTURAL DE CONCRETO ARMADO FORMAS E FERRAGENS VIGAS	FASE DO PROJETO EXECUTIVO
FOLHA Nº 15/28	