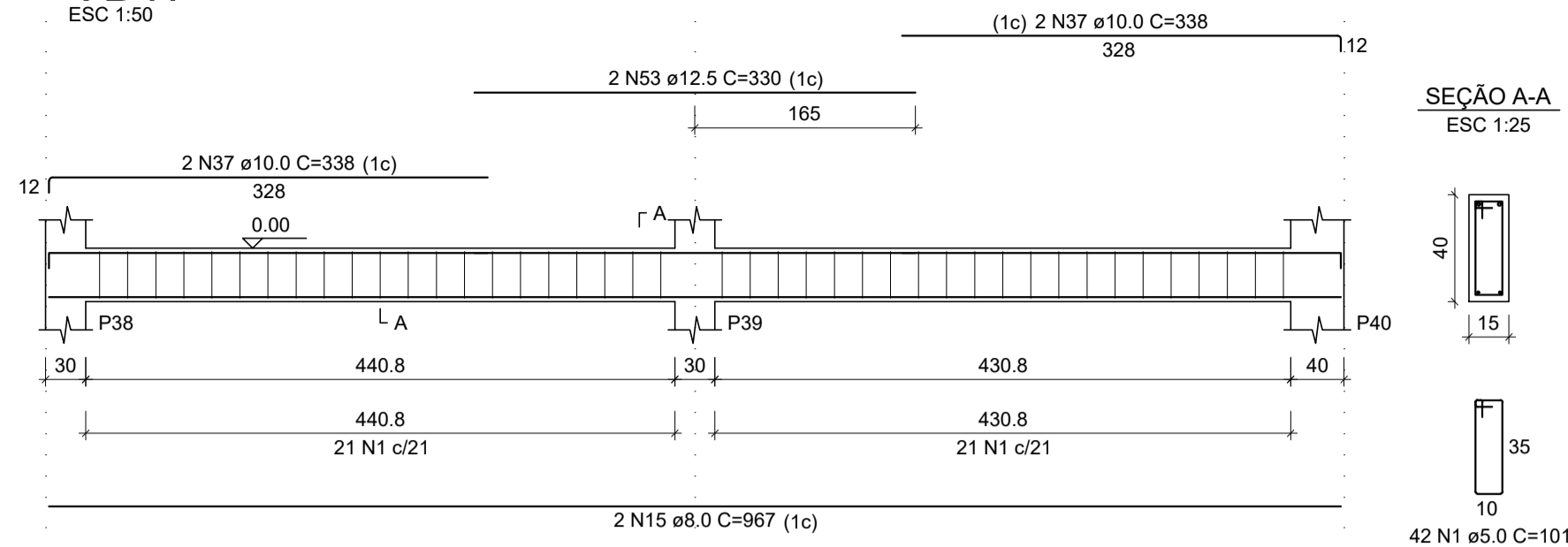
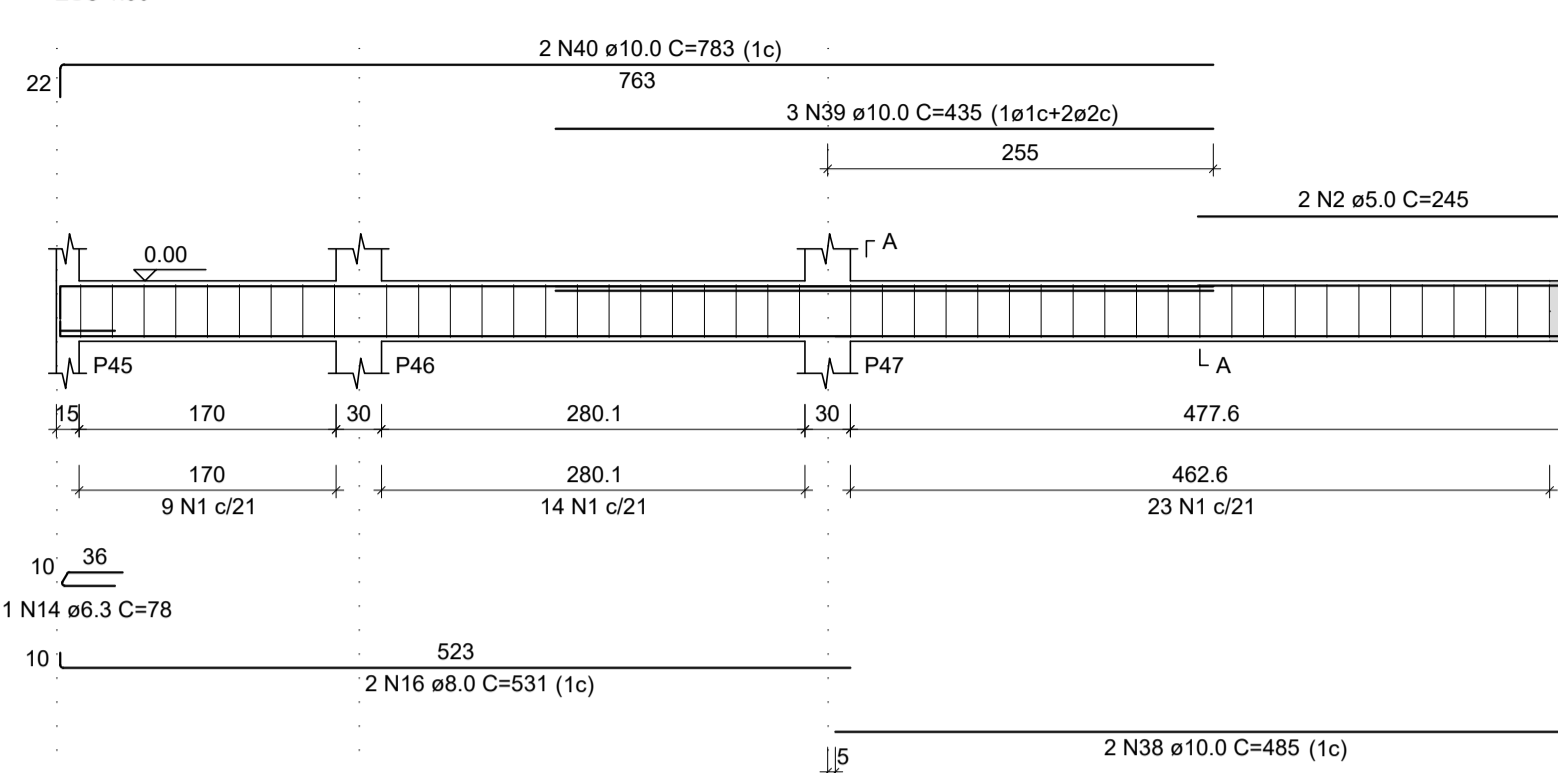


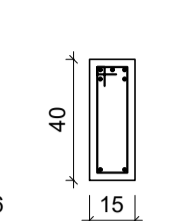
VB17
ESC 1:50



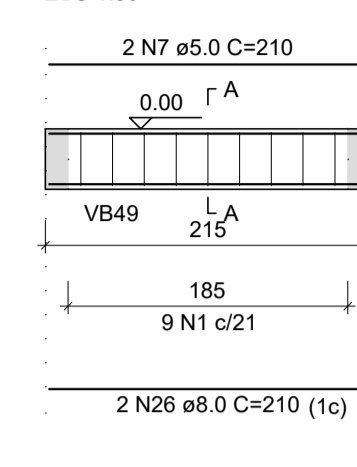
VB19
ESC 1:50



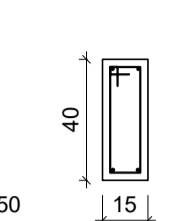
SEÇÃO A-A
ESC 1:25



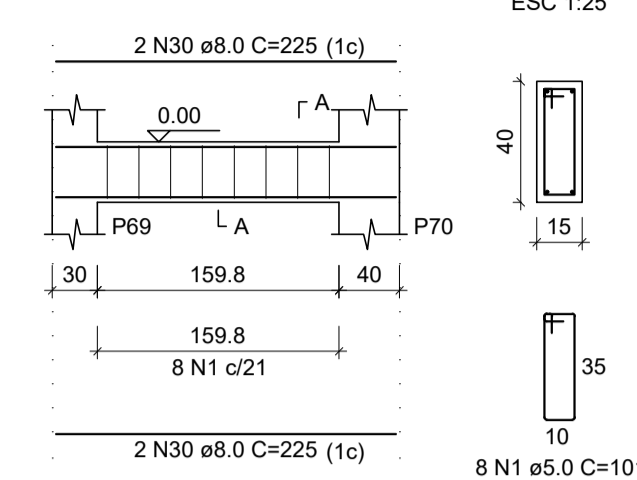
VB23
ESC 1:50



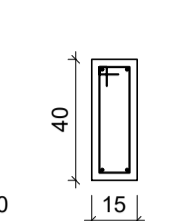
SEÇÃO A-A
ESC 1:25



VB26
ESC 1:50



SEÇÃO A-A
ESC 1:25



RELAÇÃO DO AÇO

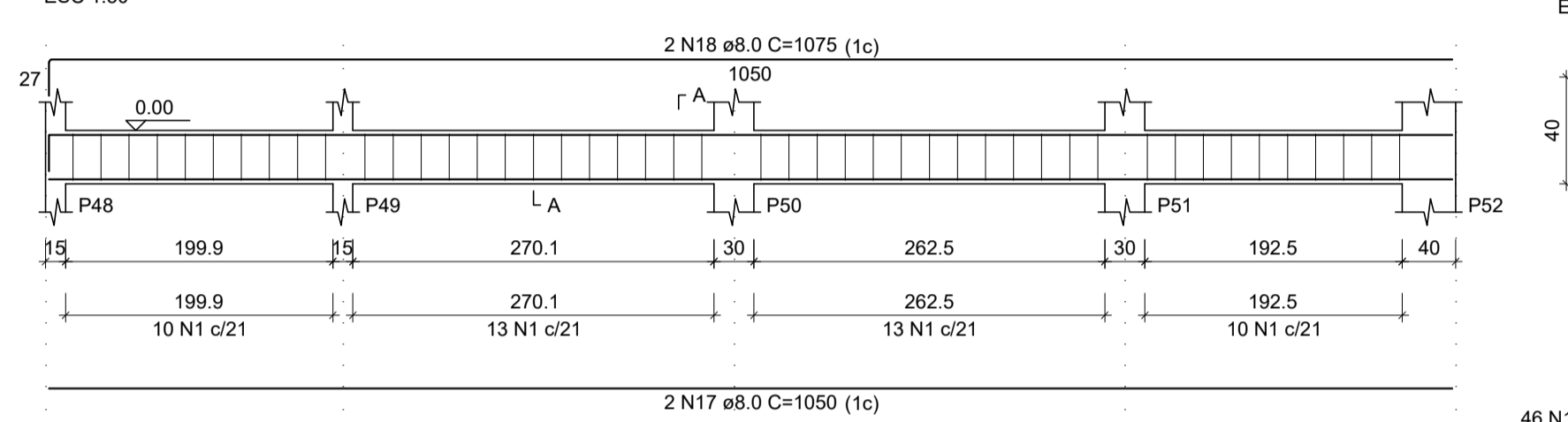
AÇO	N	DIAM (mm)	QUANT	C.UNIT (cm)	C.TOTAL (cm)
CA60	1	5.0	513	101	51813
	2	5.0	2	245	490
	3	5.0	2	119	238
	4	5.0	2	212	424
	5	5.0	14	35	490
	6	5.0	4	59	236
	7	5.0	2	210	420
	8	5.0	4	404	1616
	9	5.0	2	122	244
	10	5.0	2	191	382
	11	5.0	2	380	760
	12	5.0	2	200	400
	13	5.0	30	81	2430
	14	6.3	1	78	78
	15	8.0	2	987	1974
	16	8.0	2	531	1062
	17	8.0	2	1050	2100
	18	8.0	2	1075	2150
	19	8.0	2	1099	2198
	20	8.0	2	109	218
	21	8.0	2	126	252
	22	8.0	2	1043	2086
	23	8.0	2	402	804
	24	8.0	2	266	532
	25	8.0	2	453	906
	26	8.0	2	210	420
	27	8.0	2	1180	2360
	28	8.0	2	485	970
	29	8.0	2	213	426
	30	8.0	4	225	900
	31	8.0	2	774	1548
	32	8.0	2	1007	2014
	33	8.0	2	315	630
	34	8.0	2	340	680
	35	8.0	2	390	780
	36	8.0	2	518	1036
	37	10.0	4	338	1352
	38	10.0	2	485	970
	39	10.0	3	435	1305
	40	10.0	2	783	1566
	41	10.0	2	517	1034
	42	10.0	2	163	326
	43	10.0	2	693	1386
	44	10.0	2	183	366
	45	10.0	2	315	630
	46	10.0	2	509	1018
	47	10.0	6	404	2424
	48	10.0	2	255	510
	49	10.0	2	496	992
	50	10.0	2	360	720
	51	10.0	2	350	700
	52	10.0	2	526	1056
	53	12.5	4	330	1320
	54	12.5	2	325	650
	55	12.5	2	297	594
	56	12.5	2	438	876
	57	12.5	2	335	670
	58	12.5	2	168	336

RESUMO DO AÇO

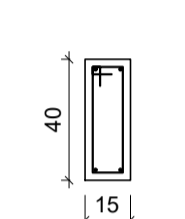
AÇO	DIAM (mm)	C.TOTAL (m)	QUANT + 10% (Barras)	UNIT	PESO + 10% (kg)
CA50	6.3	1.03	1	12 m	0.2
	8.0	269.3	24	12 m	112.9
	10.0	163.6	15	12 m	110.9
	12.5	44.5	5	12 m	47.1
CA60	5.0	585.6	-	rolo (170 kg)	101
PESO TOTAL (kg)					
CA50	270.8				
CA60	101				

Volume de concreto (C-25) = 7.14 m³
Área de forma = 113.25 m²

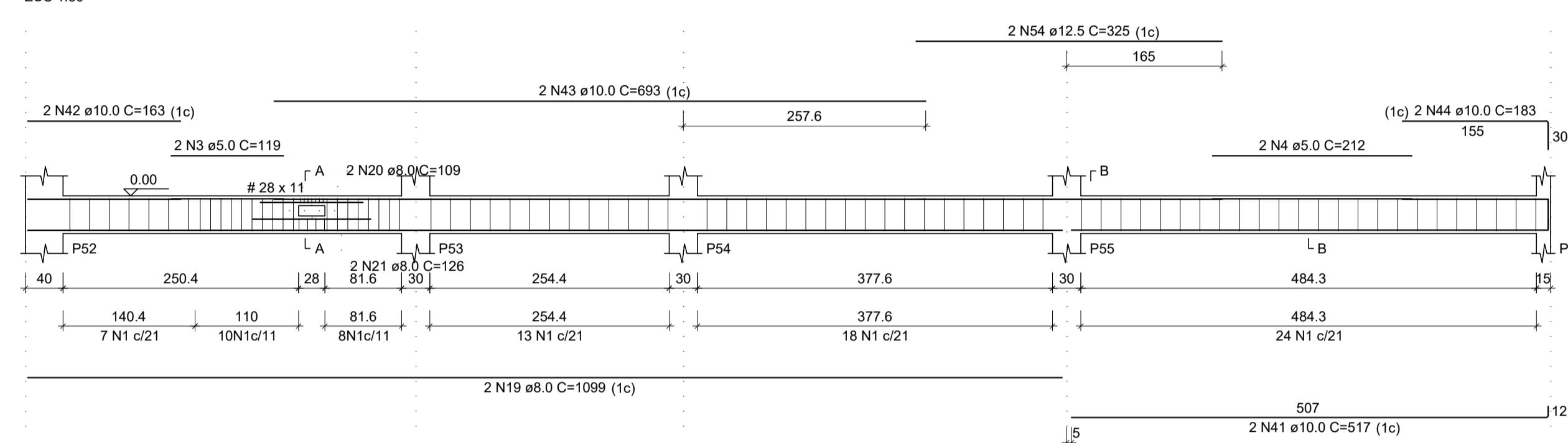
VB20
ESC 1:50



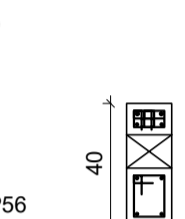
SEÇÃO A-A
ESC 1:25



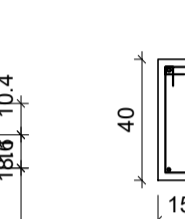
VB21
ESC 1:50



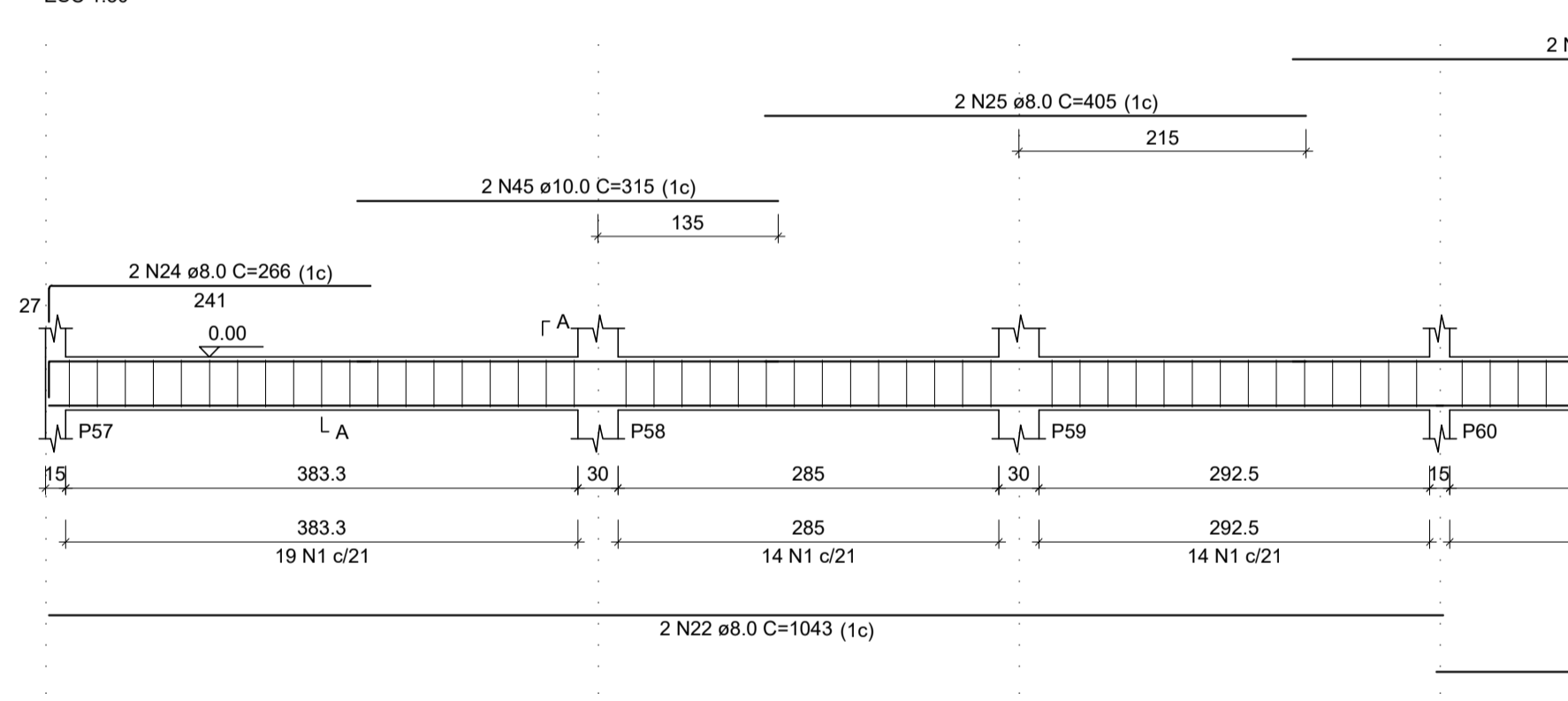
SEÇÃO A-A
ESC 1:25



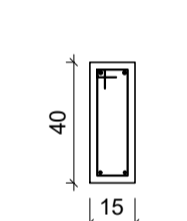
SEÇÃO B-B
ESC 1:25



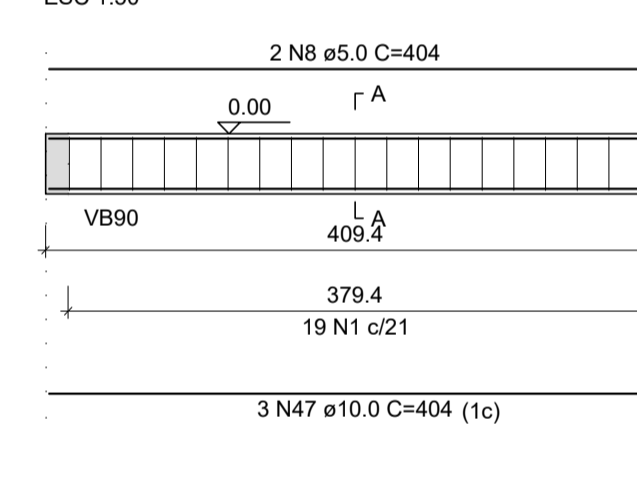
VB22
ESC 1:50



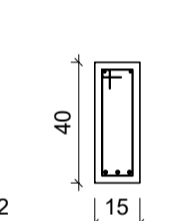
SEÇÃO A-A
ESC 1:25



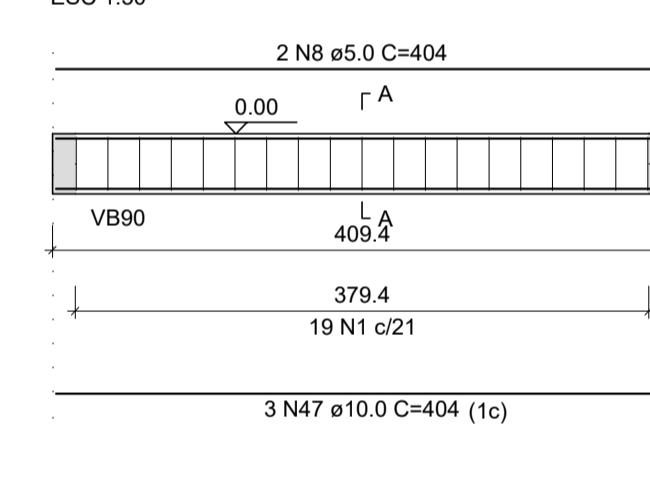
VB24
ESC 1:50



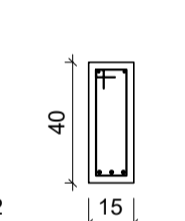
SEÇÃO A-A
ESC 1:25



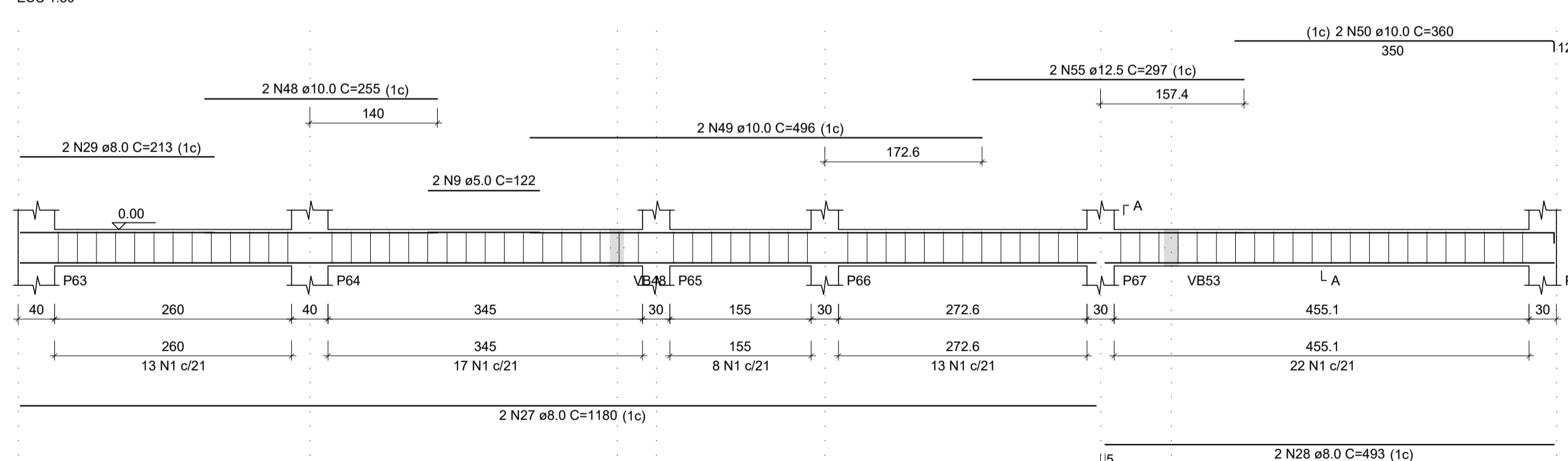
VB28
ESC 1:50



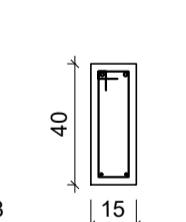
SEÇÃO A-A
ESC 1:25



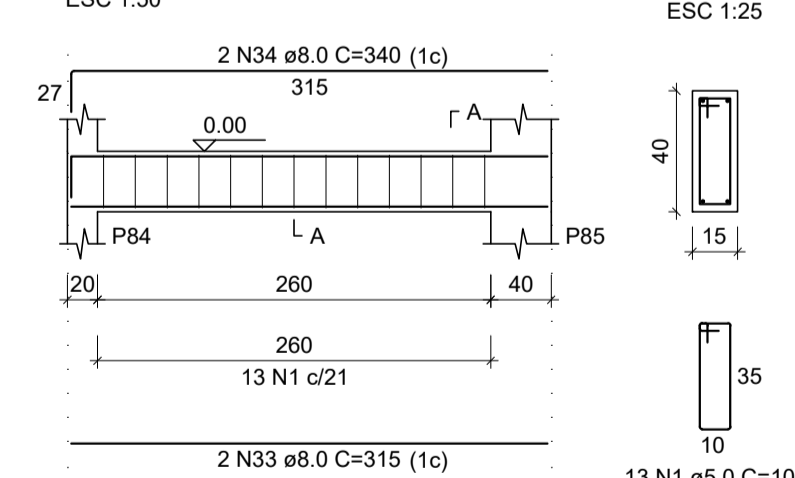
VB25
ESC 1:50



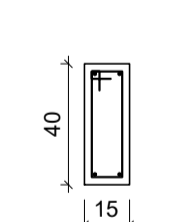
SEÇÃO A-A
ESC 1:25



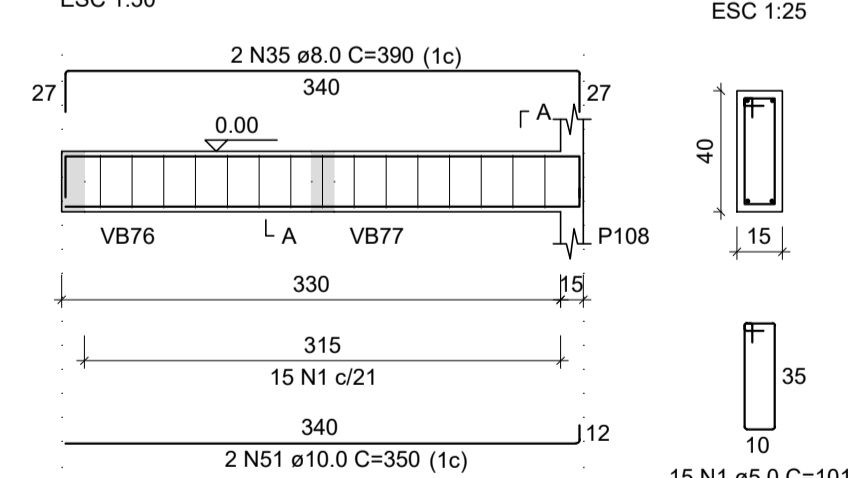
VB31
ESC 1:50



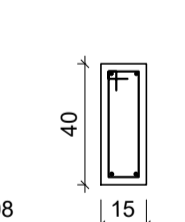
SEÇÃO A-A
ESC 1:25



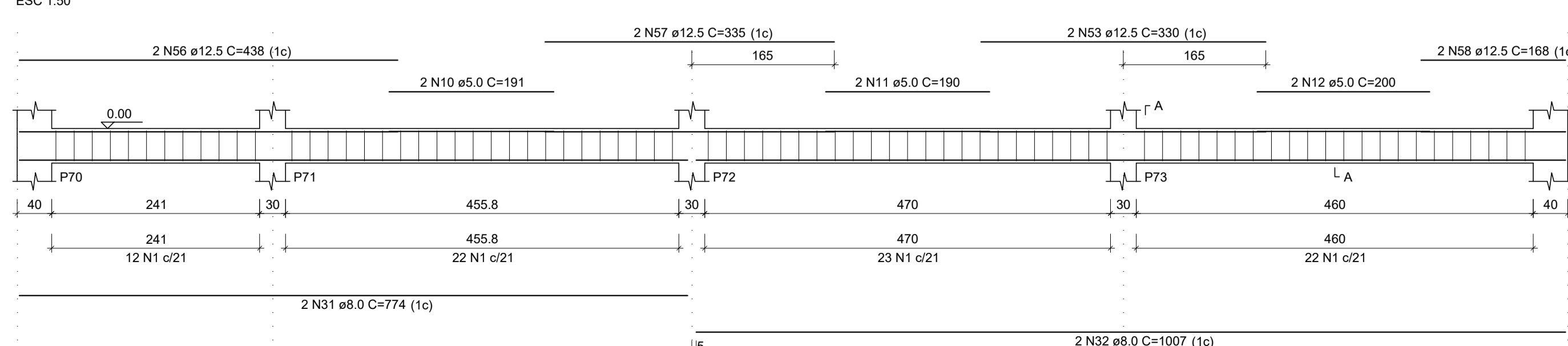
VB36
ESC 1:50



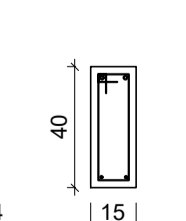
SEÇÃO A-A
ESC 1:25



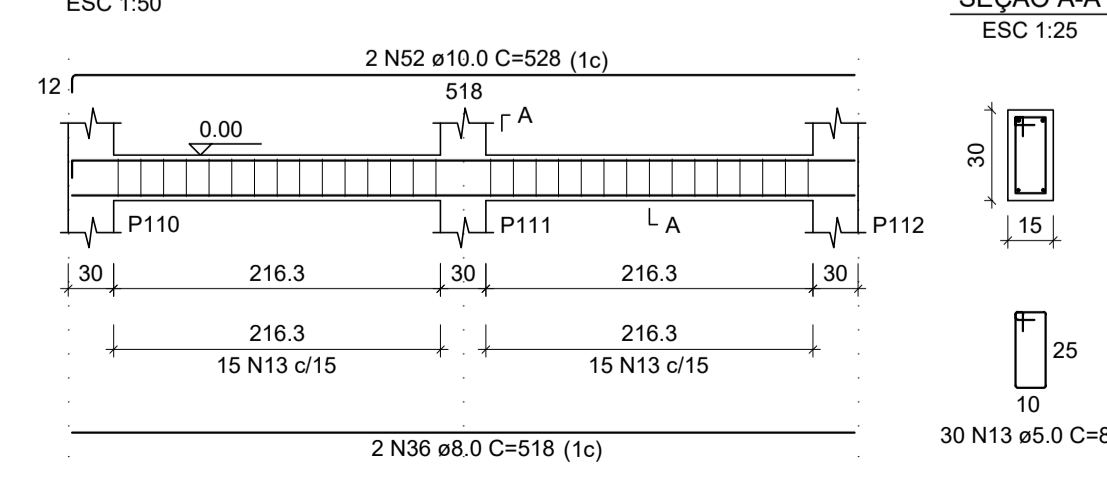
VB27
ESC 1:50



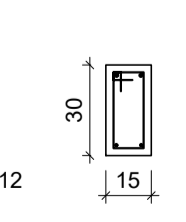
SEÇÃO A-A
ESC 1:25



VB38
ESC 1:50



SEÇÃO A-A
ESC 1:25



REV. 00	13/04/20	EMISSÃO INICIAL	DAC
REVISÃO: DATA	:	DESCRIÇÃO:	RESP.:



PROJETO	GERENÇA DE PROJETOS	DENIS DE SOUZA SILVA	CREA: MG-127.216/D
	COORDENAÇÃO DE PROJETOS	ALDOISO CAETANO FERREIRA	CREA: MG-97.132/D
	RESPONSÁVEL TÉCNICO	ENGR. CIVIL FLÁVIA C. BARBOSA	CREA: MG-187.842/D
	PROJETO	WILLIAM BARADEL LARI	
	DESENHO	WILLIAM BARADEL LARI	

EMPRESAMENTO		DISCIPLINA
IMPLANTAÇÃO DO CEMAPA E CENTRO POP		ESTRUTURAL
ENDEREÇO	RUA PROJETADA, BAIRRO SANTA CECILIA POUSO ALEGRE - MINAS GERAIS	FASE DO PROJETO
ASSUNTO	PROJETO ESTRUTURAL DE CONCRETO ARMADO FORMAS E FERRAGENS VIGAS	EXECUTIVO
DATA INICIAL	ESCALA	FOLHA Nº
13/04/2020	INDICADA	13/28
REVISÃO	ROO	
DAC-PMPA-CEPOP-PE-EST-ROO.DWG		