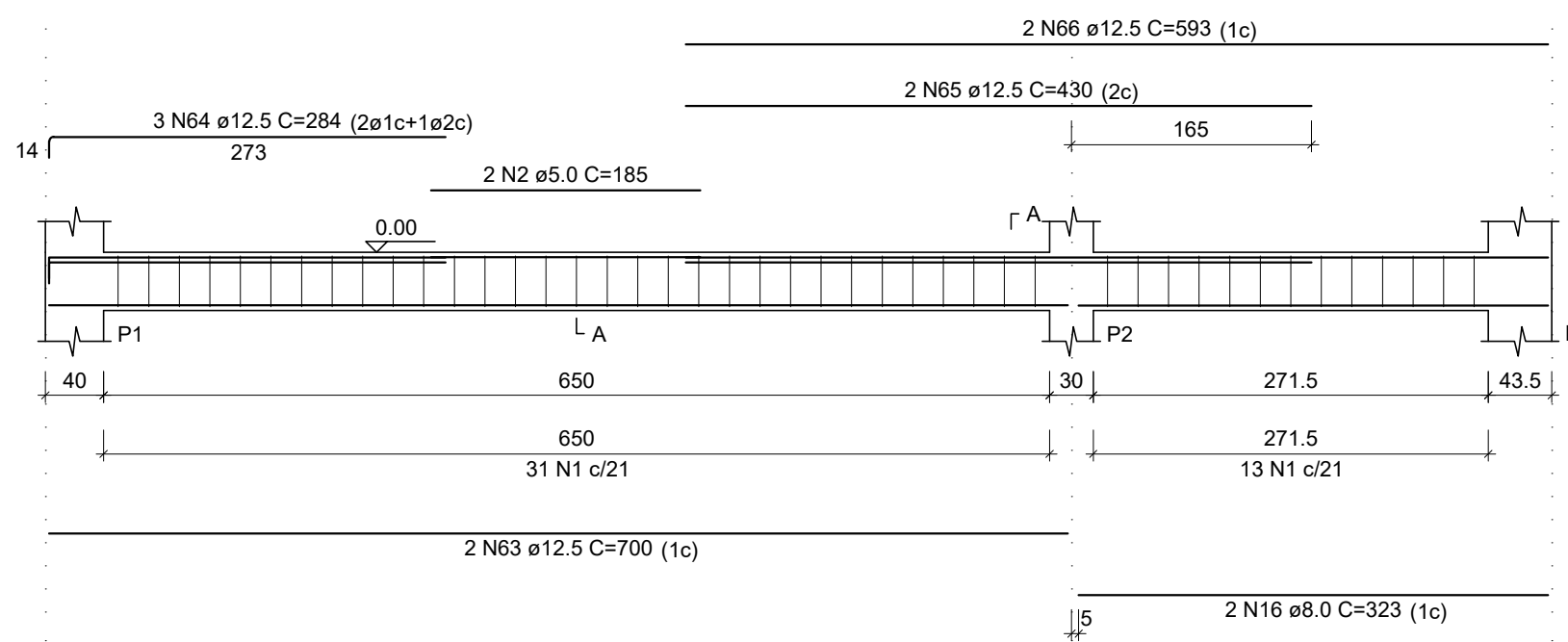


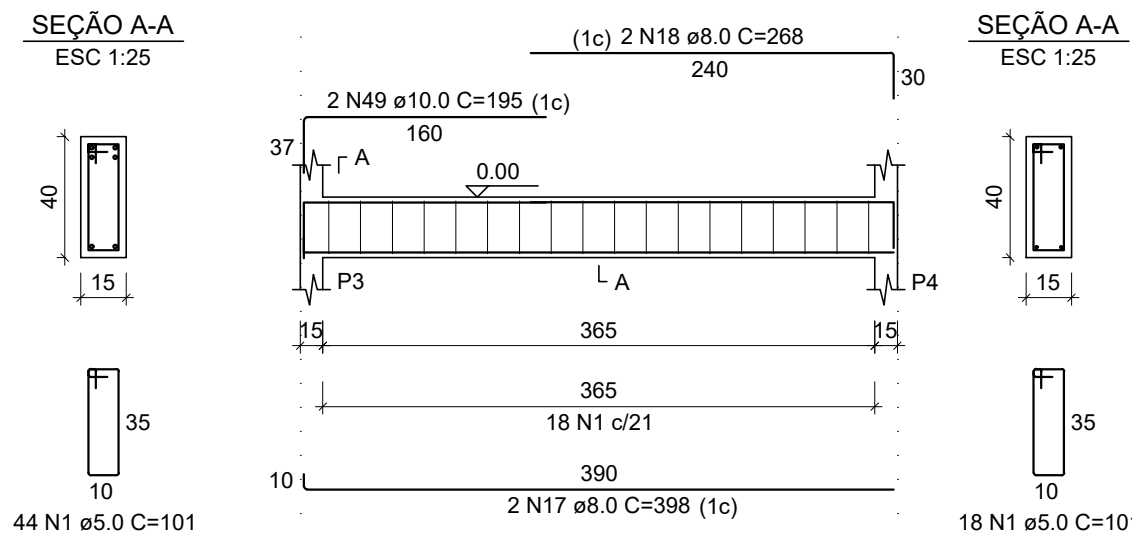
PROJETO ESTRUTURAL - CEMAPA

ESCALA INDICADA

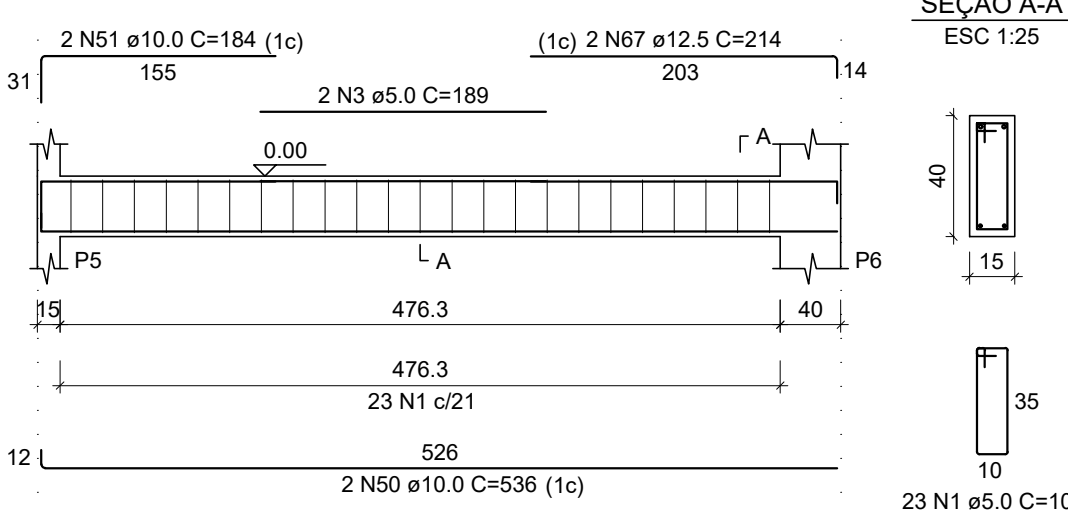
VB1  
ESC 1:50



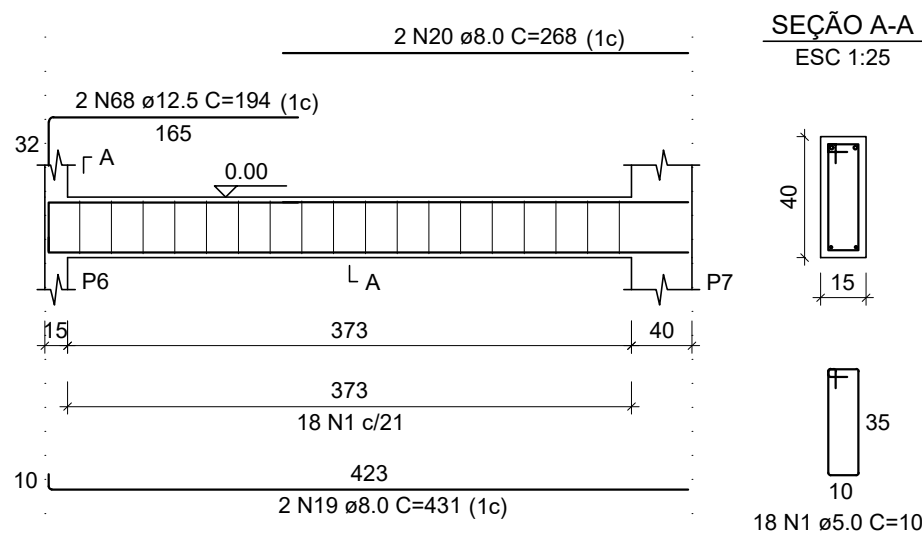
VB2  
ESC 1:50



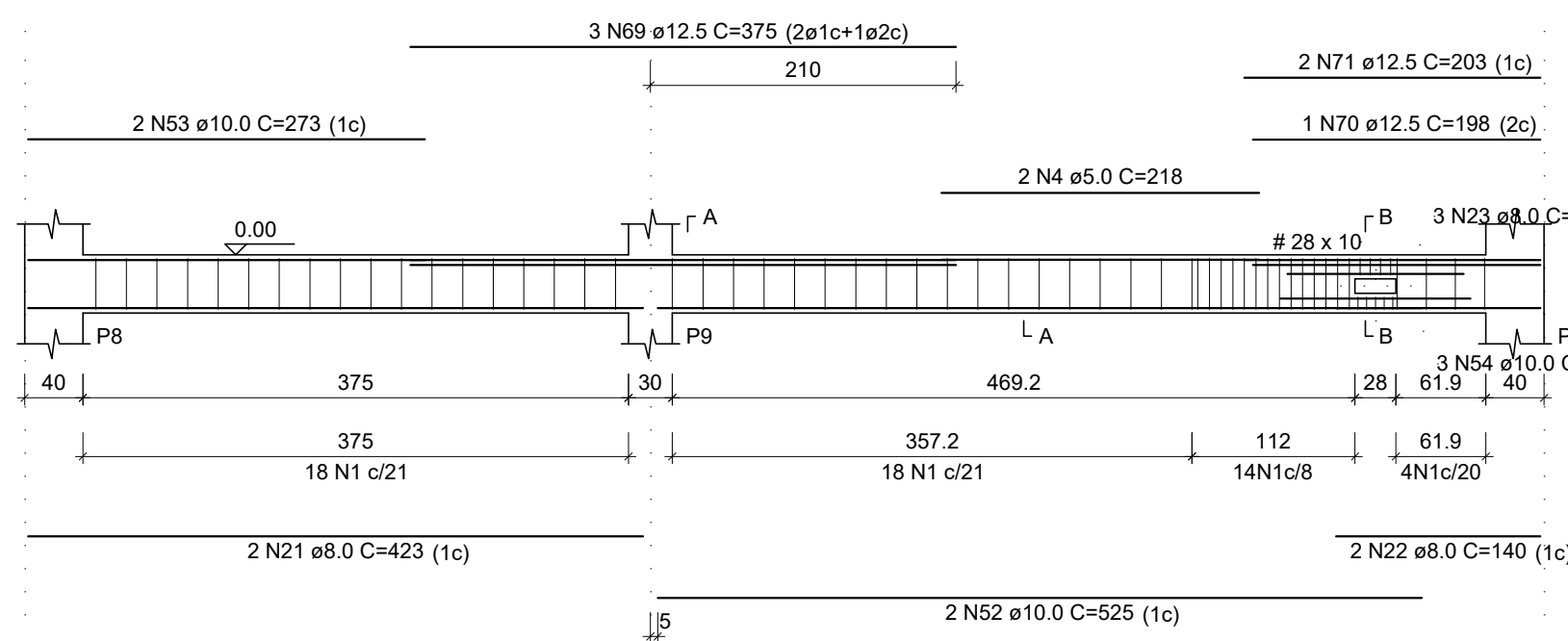
VB3  
ESC 1:50



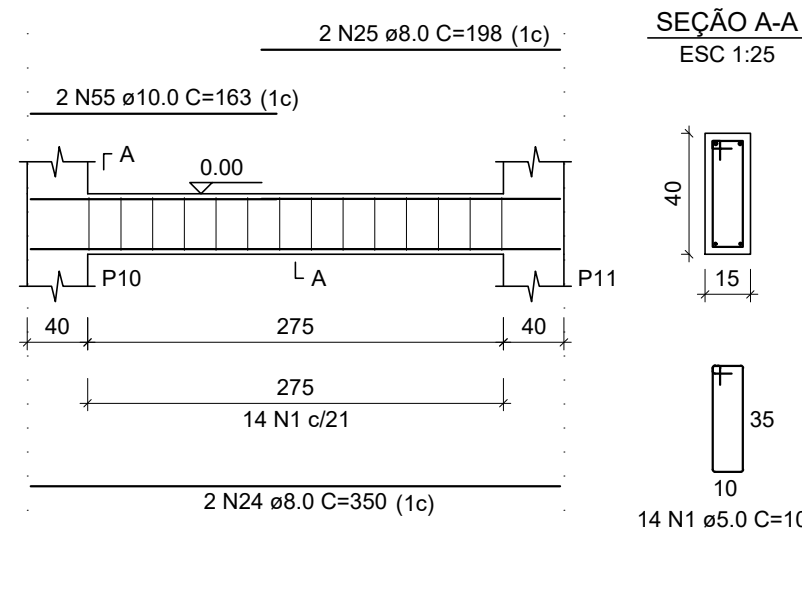
VB4  
ESC 1:50



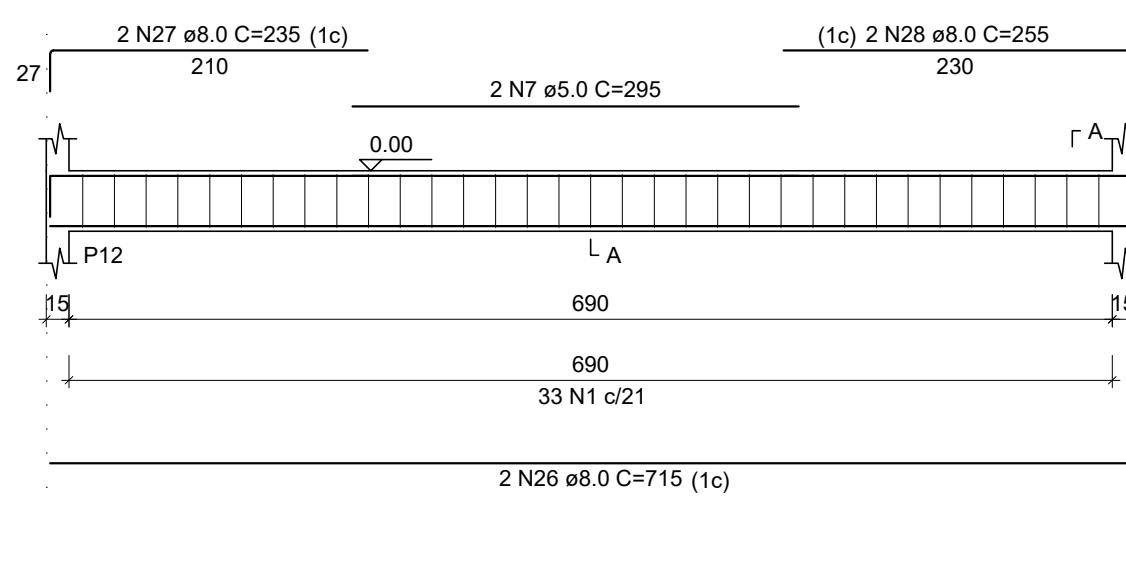
VB5  
ESC 1:50



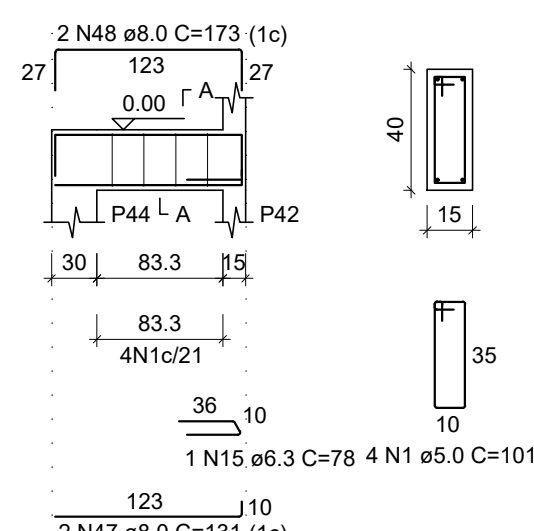
VB6  
ESC 1:50



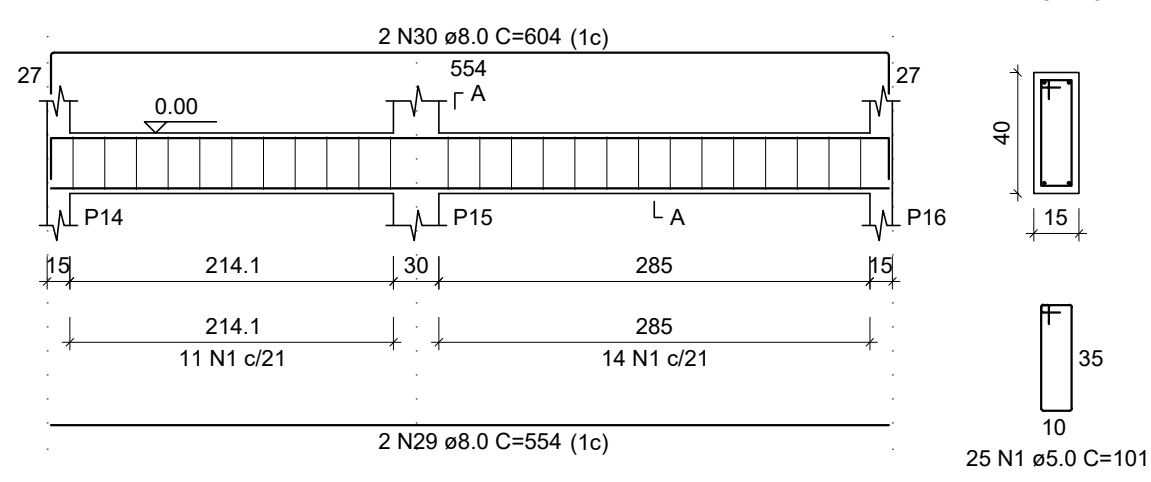
VB7  
ESC 1:50



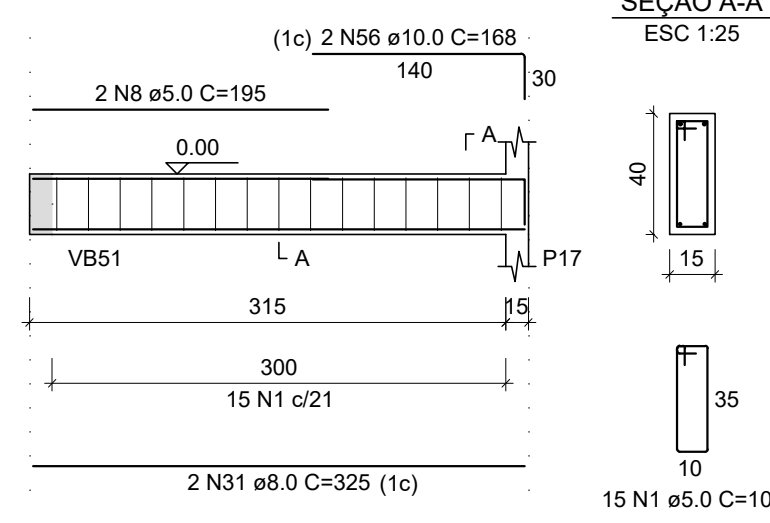
VB70  
ESC 1:50



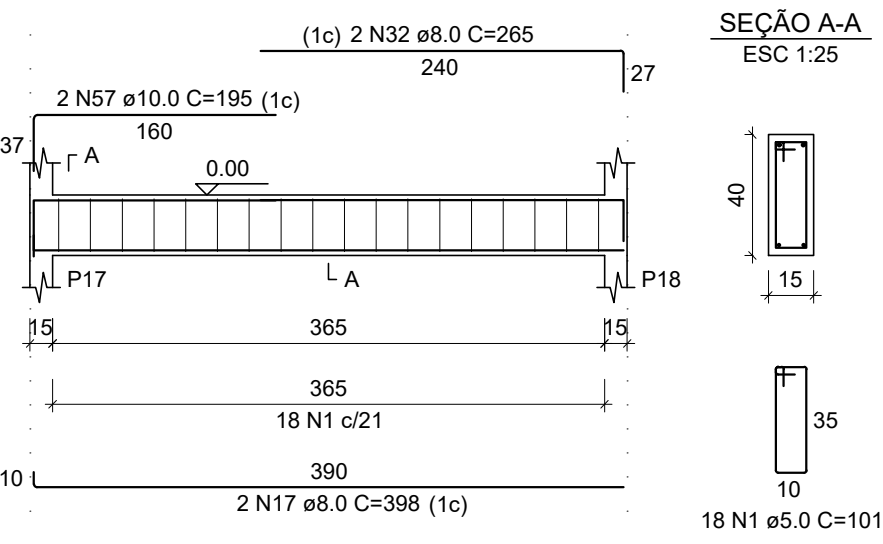
VB8  
ESC 1:50



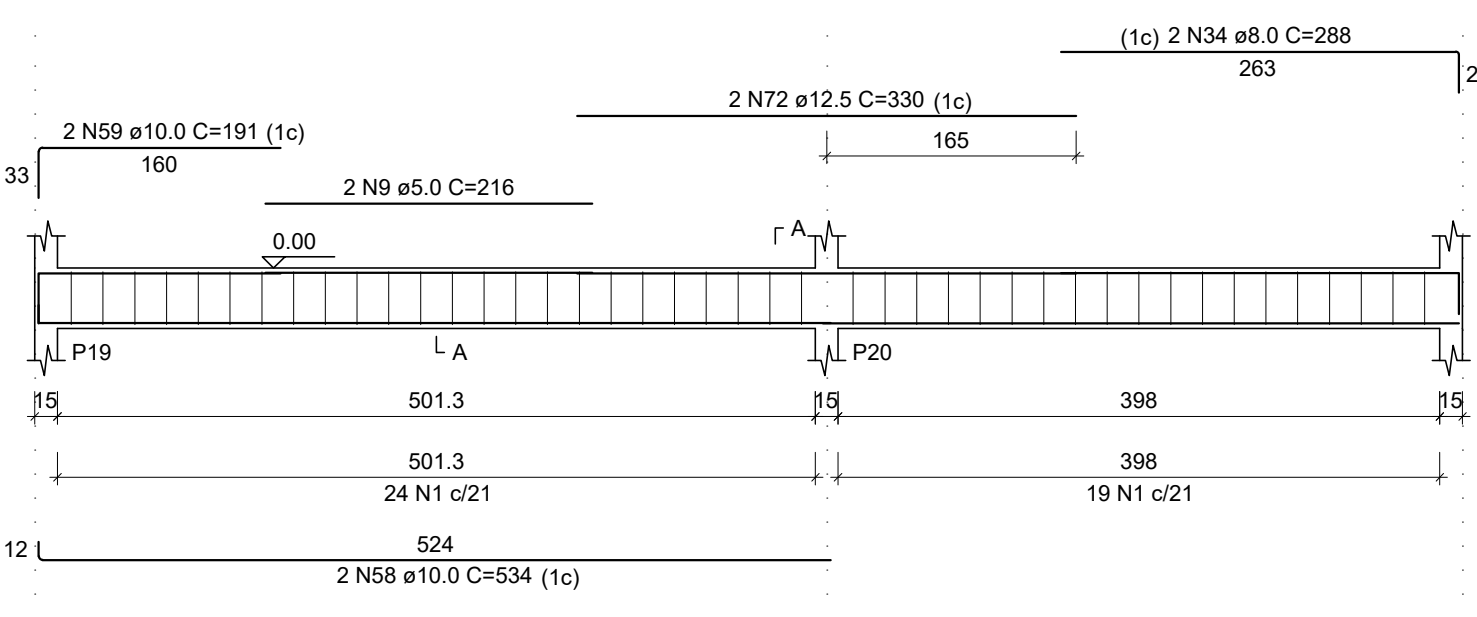
VB9  
ESC 1:50



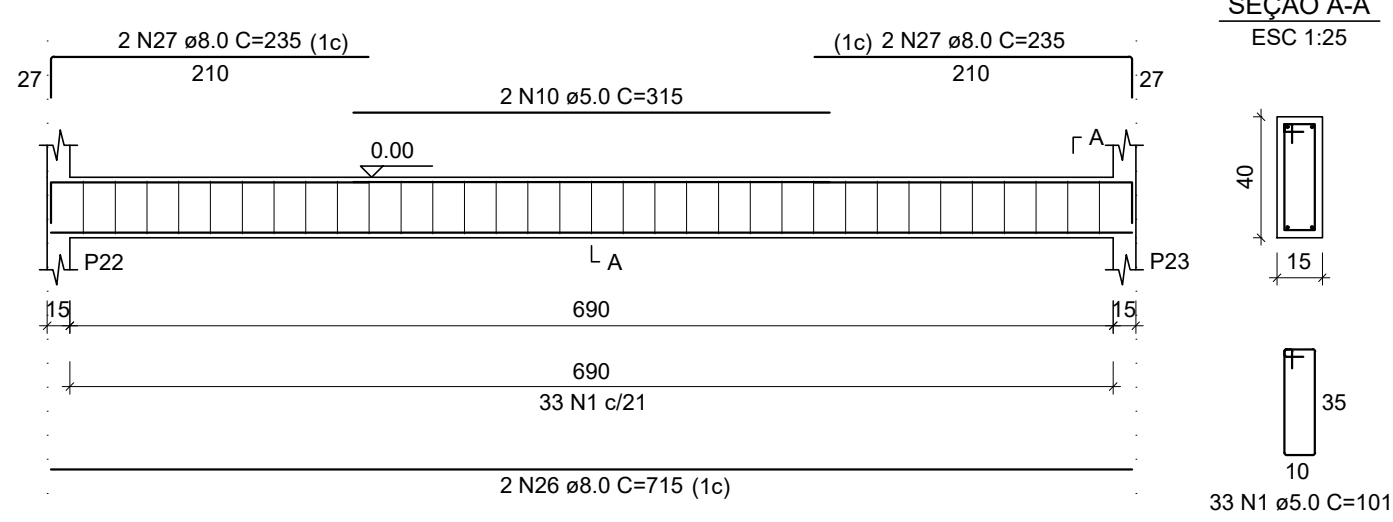
VB10  
ESC 1:50



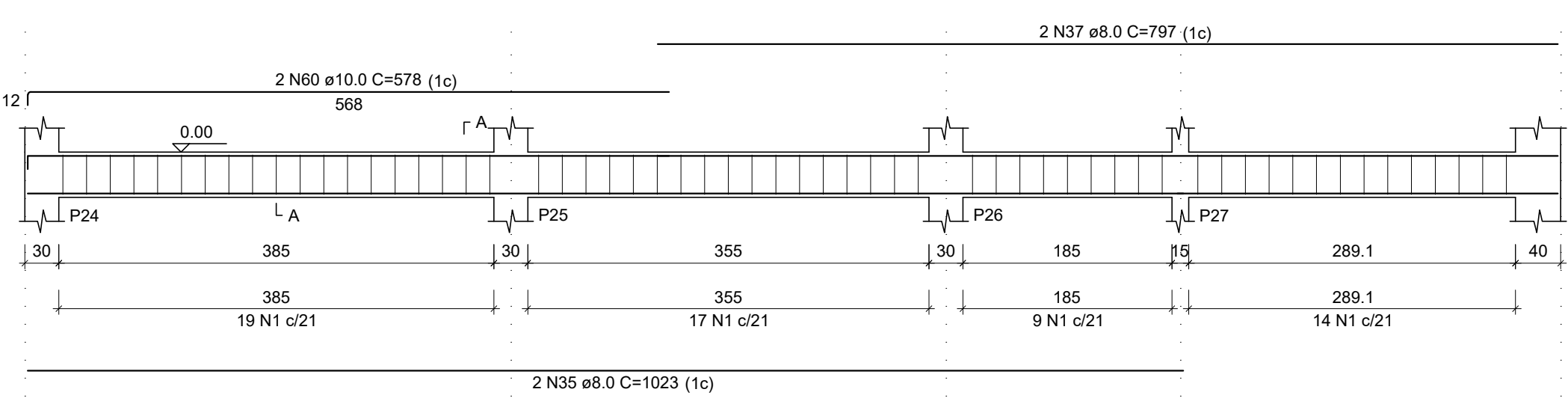
VB11  
ESC 1:50



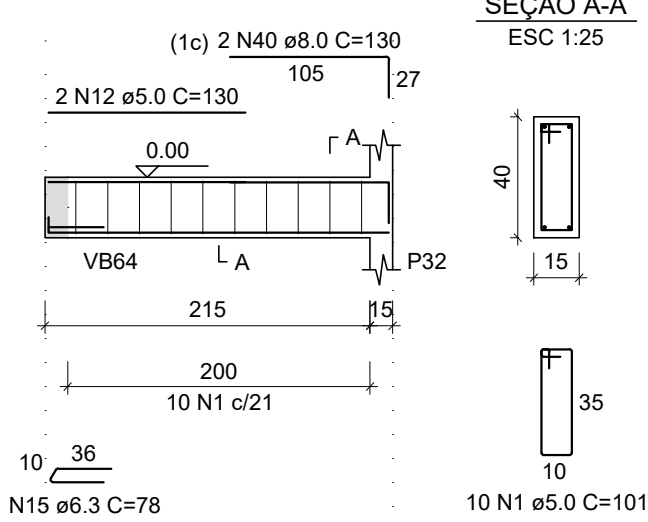
VB12  
ESC 1:50



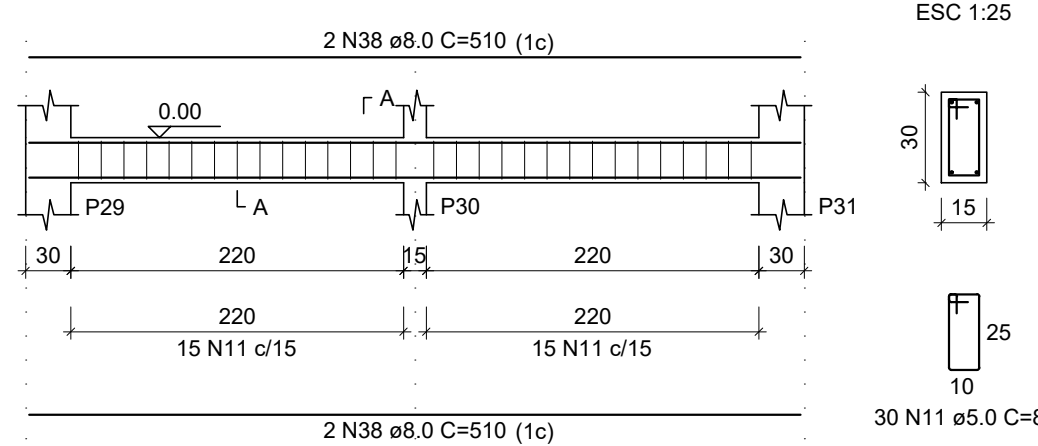
VB13  
ESC 1:50



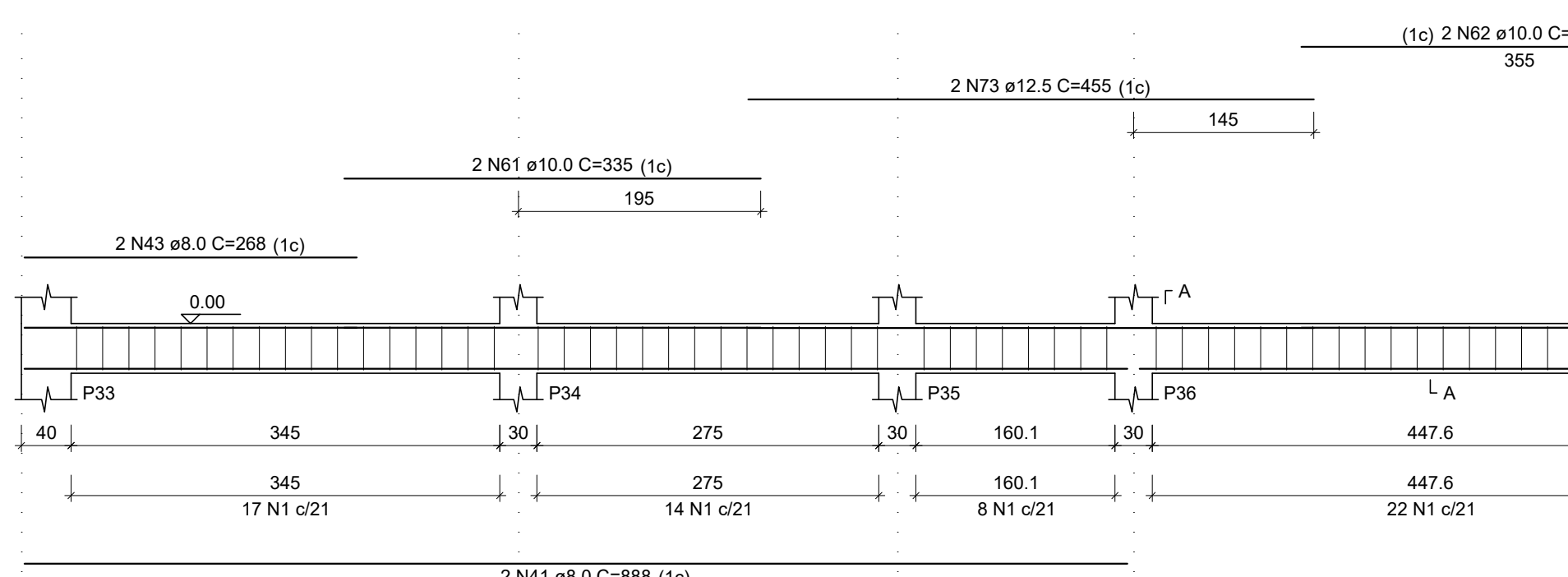
VB15  
ESC 1:50



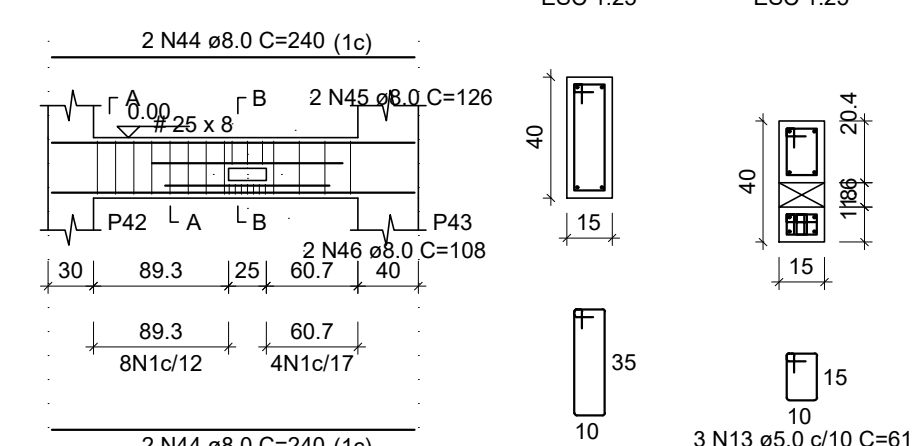
VB14  
ESC 1:50



VB16  
ESC 1:50



VB18  
ESC 1:50



RELAÇÃO DO AÇO

ACO	N	DIAM (mm)	QUANT	C.UNIT (cm)	C.TOTAL (cm)
CA60	1	5.0	404	101	48804
	2	5.0	2	185	370
	3	5.0	2	189	378
	4	5.0	2	218	436
	5	5.0	4	53	212
	6	5.0	10	43	430
	7	5.0	2	295	590
	8	5.0	2	195	390
	9	5.0	2	216	432
	10	5.0	2	315	630
	11	5.0	30	81	2430
	12	5.0	2	130	260
	13	5.0	3	61	183
	14	5.0	14	39	546
	15	5.0	2	198	396
CA50	16	8.0	2	323	646
	17	8.0	4	398	1592
	18	8.0	2	268	536
	19	8.0	2	431	862
	20	8.0	2	268	536
	21	8.0	2	423	846
	22	8.0	2	140	280
	23	8.0	3	121	363
	24	8.0	2	350	700
	25	8.0	2	198	396
	26	8.0	4	715	2860
	27	8.0	6	235	1410
	28	8.0	2	255	510
	29	8.0	2	554	1108
	30	8.0	2	604	1208
	31	8.0	2	325	650
	32	8.0	2	265	530
	33	8.0	2	421	842
	34	8.0	2	288	576
	35	8.0	2	1023	2046
	36	8.0	2	337	674
	37	8.0	2	797	1594
	38	8.0	4	510	2040
	39	8.0	2	233	466
	40	8.0	2	130	260
	41	8.0	2	888	1776
	42	8.0	2	495	990
	43	8.0	2	268	536
	44	8.0	4	240	960
	45	8.0	2	126	252
	46	8.0	2	108	216
	47	8.0	2	131	262
	48	8.0	2	173	346
	49	10.0	2	195	390
	50	10.0	2	536	1072
	51	10.0	2	184	368
	52	10.0	2	525	1050
	53	10.0	2	273	546
	54	10.0	3	130	390
	55	10.0	2	163	326
	56	10.0	2	168	336
	57	10.0	2	195	390
	58	10.0	2	534	1068
	59	10.0	2	191	382
	60	10.0	2	578	1156
	61	10.0	2	335	670
	62	10.0	2	365	730
	63	12.5	2	700	1400
	64	12.5	3	284	852
	65	12.5	2	430	860
	66	12.5	2	593	1186
	67	12.5	2	214	428
	68	12.5	2	194	388
	69	12.5	3	375	1125
	70	12.5	1	198	198
	71	12.5	2	203	406
	72	12.5	2	330	660
	73	12.5	2	455	910

RESUMO DO AÇO

ACO	DIAM (mm)	C.TOTAL (m)	QUANT + 10% (Barras)	UNIT	PESO + 10% (kg)
CA50	6.3	1.6	1	12 m	0.4
	8.0	288.5	27	12 m	125.2
	10.0	88.7	9	12 m	60.2
	12.5	94.1	8	12 m	89.2
CA60	5.0	561.7	-	rolo (170 kg)	95.2
PESO TOTAL (kg)					
CA50		275			
CA60		95.2			

Volume de concreto (C-25) = 6.72 m³  
Área de forma = 106.53 m²



Prefeitura Municipal de Pouso Alegre

PROJETO	GERÊNCIA DE PROJETOS DENIS DE SOUZA SILVA CREA: MG-127.216/D
COORDENAÇÃO DE PROJETOS ALOSIO CAETANO FERREIRA CREA: MG-97.132/D	RESPONSÁVEL TÉCNICO ENGR. CIVIL FLÁVIA C. BARBOSA CREA: MG-187.842/D
PROJETO Rua Miguel Vianna, nº 81, Sala 12 Bairro Morro Chic CEP: 37500-080 - Itajubá / MG Tel: (35) 3623-5720 www.dacengenharia.com.br	
DESENHO WILLIAM BARADEL LARI	

EMPREENDIMENTO <b>IMPLANTAÇÃO DO CEMAPA E CENTRO POP</b>	
ENDEREÇO RUA PROJETADA, BAIRRO SANTA CECILIA POUSO ALEGRE - MINAS GERAIS	DISCIPLINA ESTRUTURAL
ASSUNTO PROJETO ESTRUTURAL DE CONCRETO ARMADO FORMAS E FERRAGENS VIGAS	FASE DO PROJETO EXECUTIVO
	FOLHA Nº <b>12/28</b>

DATA INICIAL 13/04/2020	ESCALA INDICADA	REVISÃO ROO	ARQUIVO DAC-PMPA-CEPOP-PE-EST-ROO.DWG
----------------------------	--------------------	----------------	--