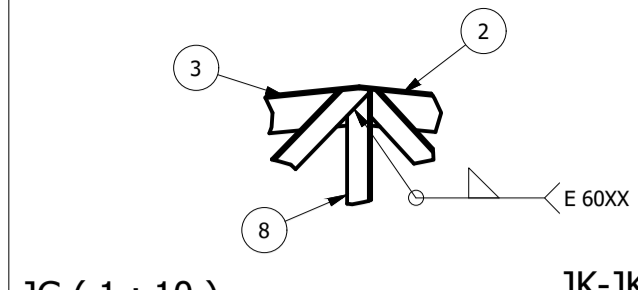


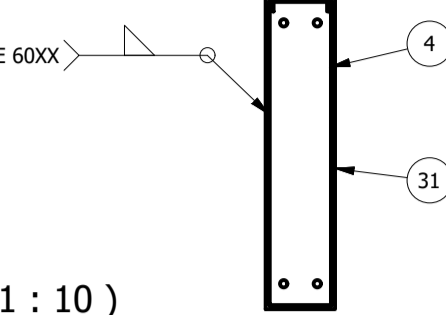
COBERTURA METÁLICA

Escala Indicada

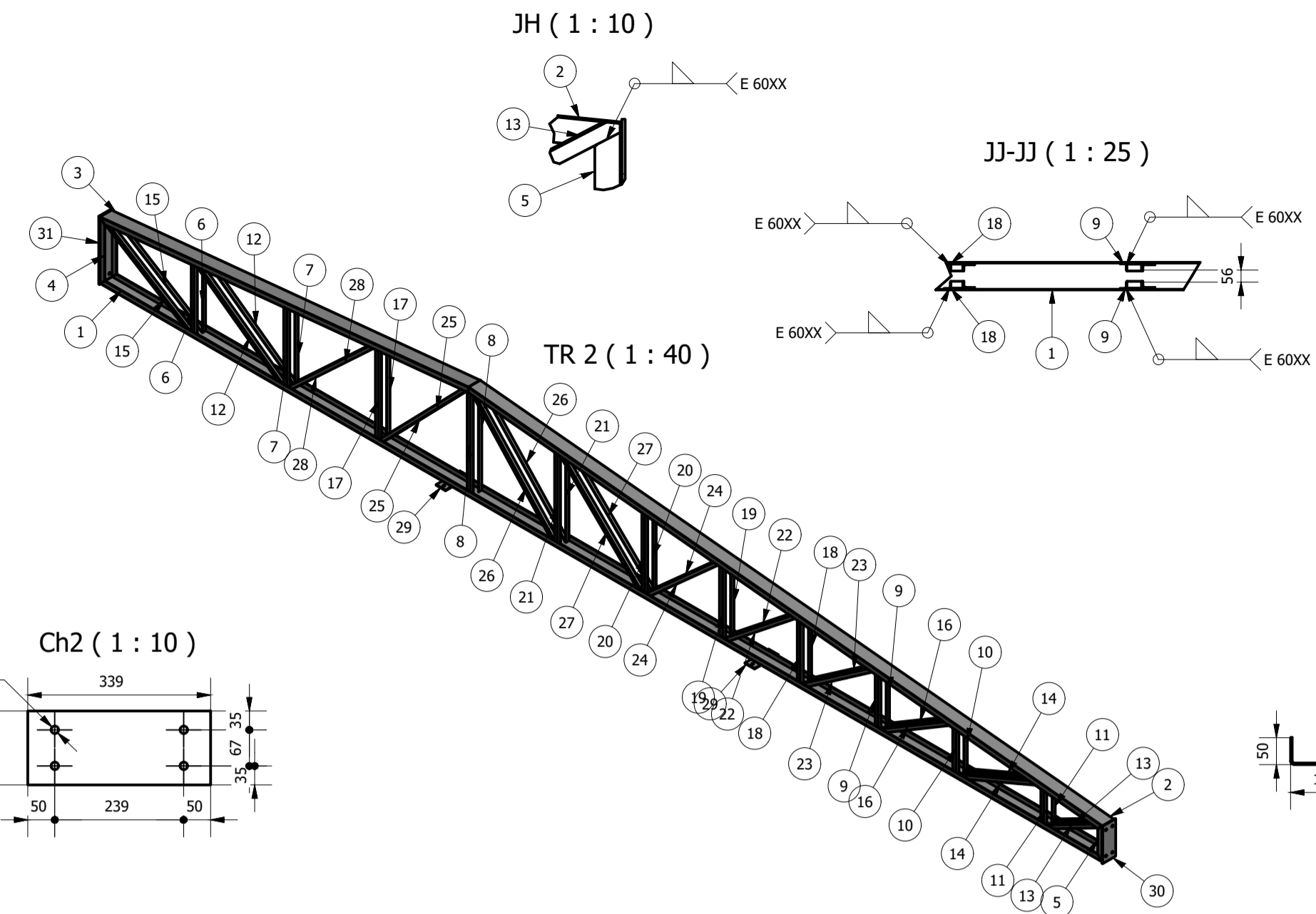
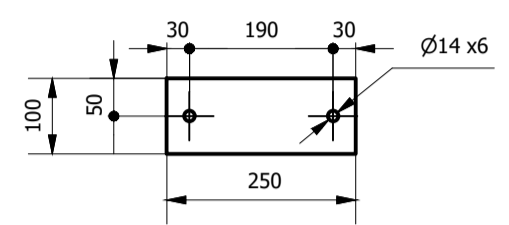


JG (1 : 10)

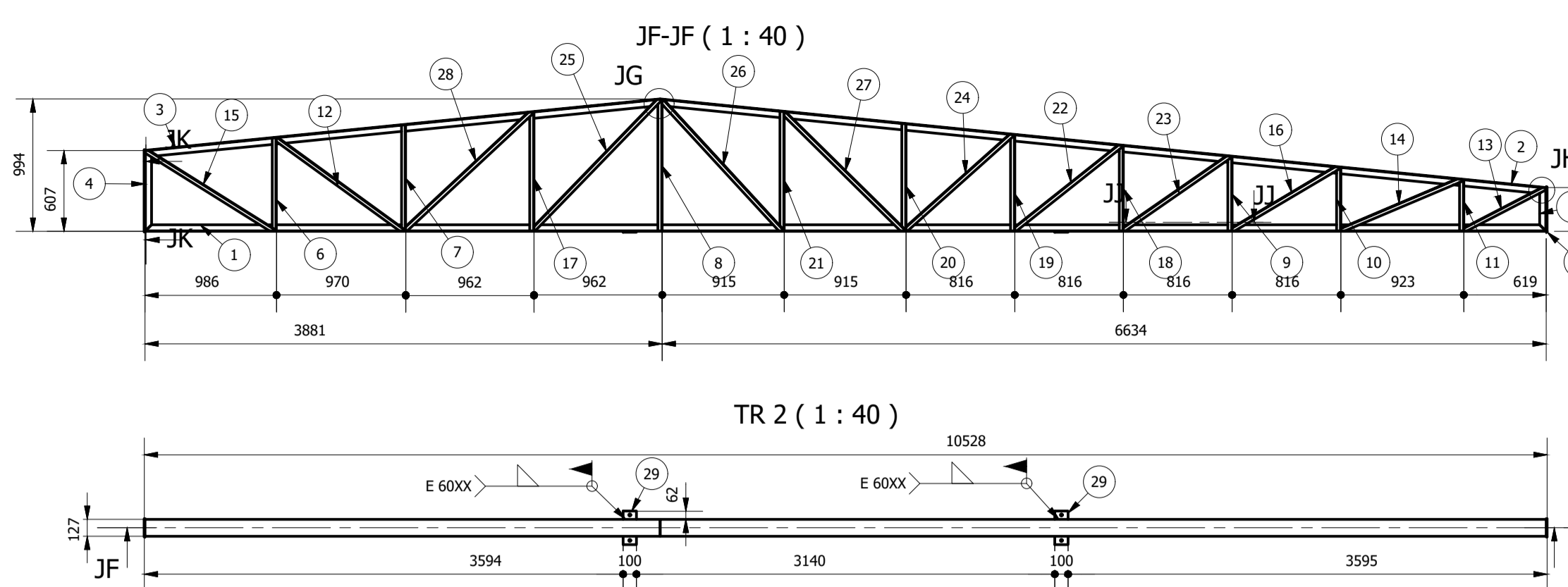
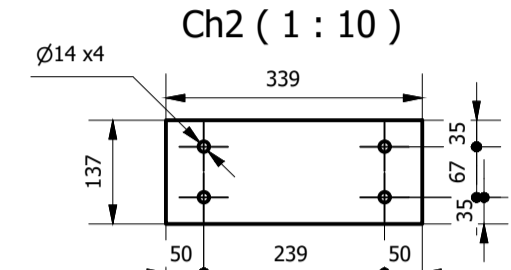
JK-JK (1 : 15)



Ch1 (1 : 10)



Ch2 (1 : 10)



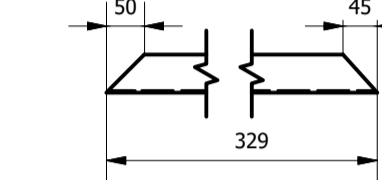
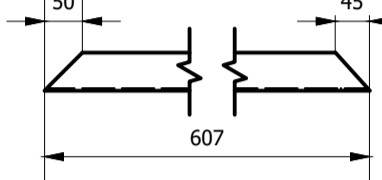
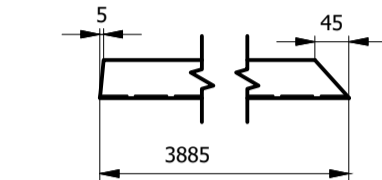
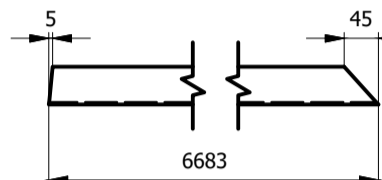
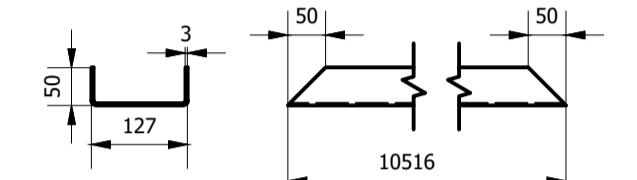
U1 (1 : 10)

U2 (1 : 10)

U3 (1 : 10)

U4 (1 : 10)

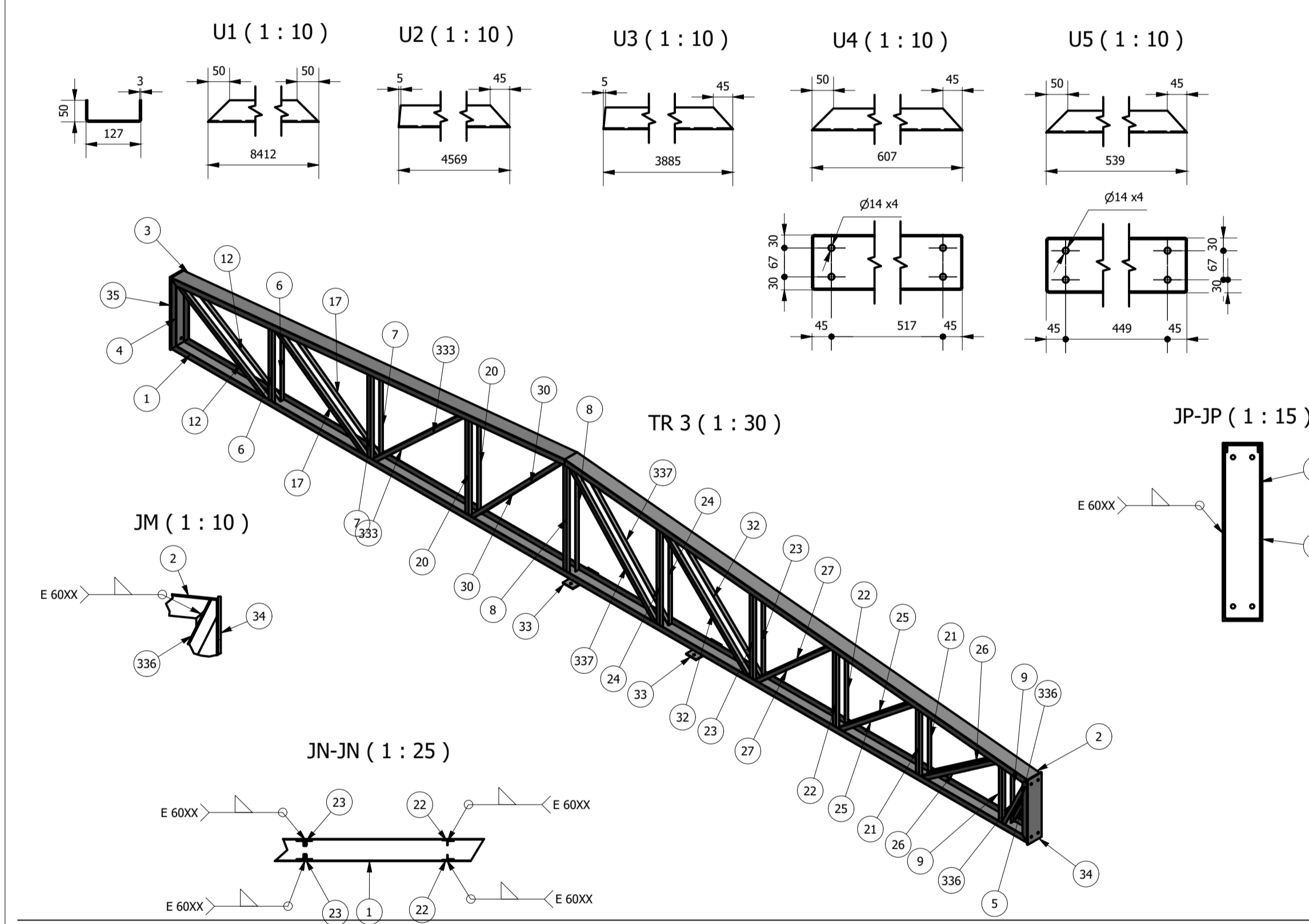
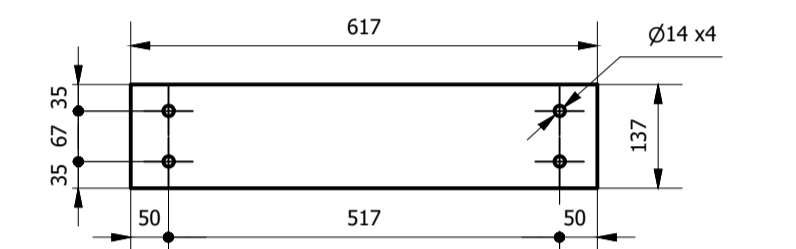
U5 (1 : 10)



ID	ITEM	QTD	DESCRIÇÃO	COMPR.	MATERIAL	PESO UN.
1	U1	1	UF 127 x 50 x 3	10515	ASTM A36	53,6 kg
2	U2	1	UF 127 x 50 x 3	6683	ASTM A36	34,1 kg
3	U3	1	UF 127 x 50 x 3	3884	ASTM A36	19,8 kg
4	U4	1	UF 127 x 50 x 3	607	ASTM A36	3,0 kg
5	U5	1	UF 127 x 50 x 3	328	ASTM A36	1,5 kg
6	L2	2	L 1.1.4 x 1.8	699	ASTM A36	1,1 kg
7	L1	2	L 1.1.4 x 1.8	796	ASTM A36	1,3 kg
8	L3	2	L 1.1.4 x 1.8	989	ASTM A36	1,6 kg
9	L4	2	L 1.1.4 x 1.8	561	ASTM A36	0,9 kg
10	L5	2	L 1.1.4 x 1.8	480	ASTM A36	0,8 kg
11	L6	2	L 1.1.4 x 1.8	387	ASTM A36	0,6 kg
12	L7	2	L 1.1.4 x 1.8	1218	ASTM A36	1,9 kg
13	L12	2	L 1.1.4 x 1.8	709	ASTM A36	1,1 kg
14	L11	2	L 1.1.4 x 1.8	1012	ASTM A36	1,5 kg
15	L8	2	L 1.1.4 x 1.8	1176	ASTM A36	1,8 kg
16	L10	2	L 1.1.4 x 1.8	963	ASTM A36	1,4 kg
17	L13	2	L 1.1.4 x 1.8	893	ASTM A36	1,4 kg
18	L17	2	L 1.1.4 x 1.8	643	ASTM A36	1,0 kg
19	L16	2	L 1.1.4 x 1.8	724	ASTM A36	1,1 kg
20	L15	2	L 1.1.4 x 1.8	806	ASTM A36	1,3 kg
21	L14	2	L 1.1.4 x 1.8	897	ASTM A36	1,4 kg
22	L20	2	L 1.1.4 x 1.8	1045	ASTM A36	1,6 kg
23	L9	2	L 1.1.4 x 1.8	998	ASTM A36	1,5 kg
24	L21	2	L 1.1.4 x 1.8	1118	ASTM A36	1,7 kg
25	L19	2	L 1.1.4 x 1.8	1411	ASTM A36	2,1 kg
26	L23	2	L 1.1.4 x 1.8	1380	ASTM A36	2,0 kg
27	L22	2	L 1.1.4 x 1.8	1311	ASTM A36	2,0 kg
28	L18	2	L 1.1.4 x 1.8	1341	ASTM A36	2,0 kg
29	Ch1	2	6,35 x 250 x 100		ASTM A36	1,2 kg
30	Ch2	1	6,35 x 137 x 338		ASTM A36	2,3 kg
31	Ch3	1	6,35 x 137 x 617		ASTM A36	4,2 kg

Peso total: 187 kg

Ch3 (1 : 10)



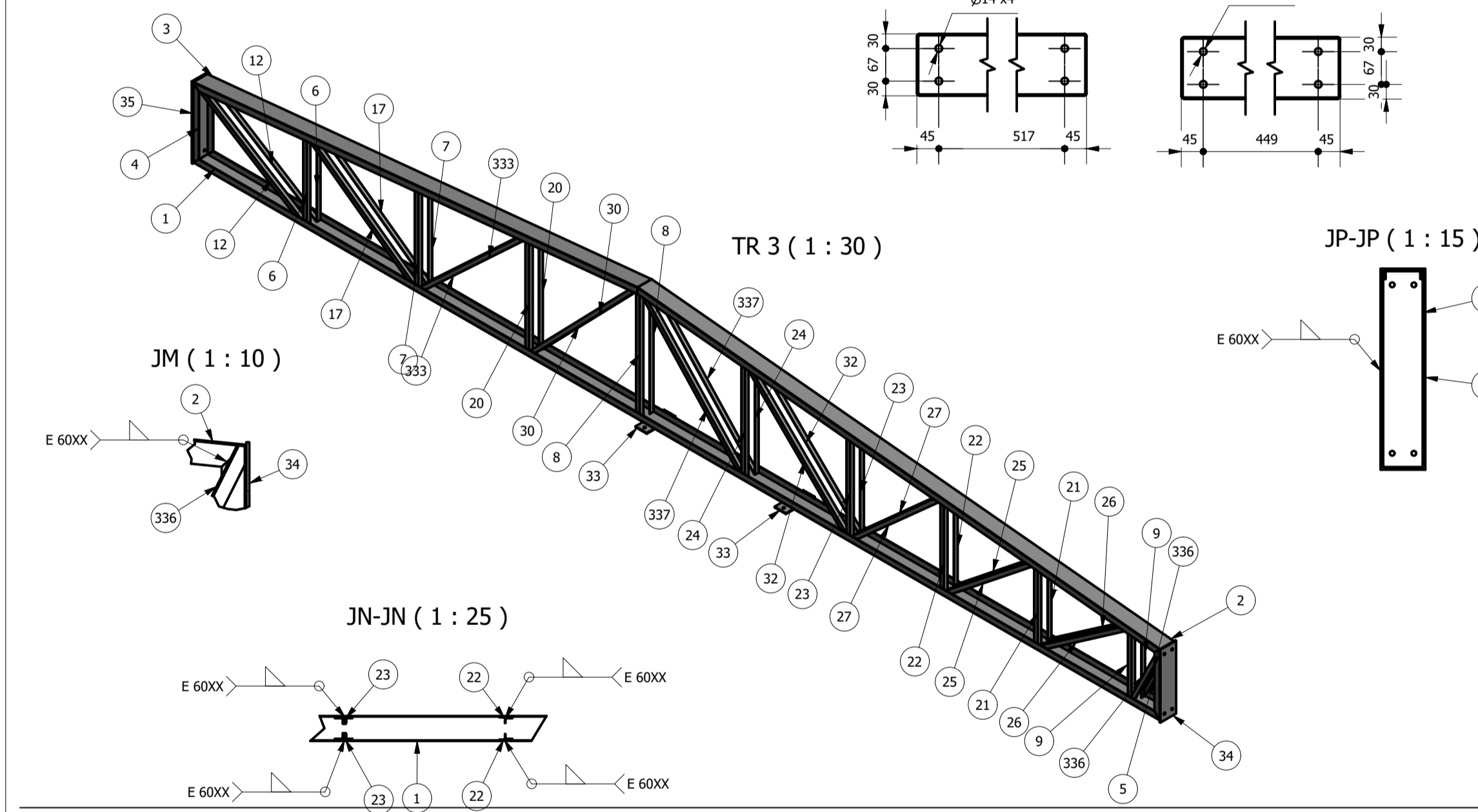
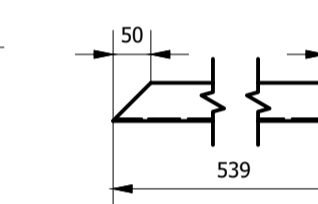
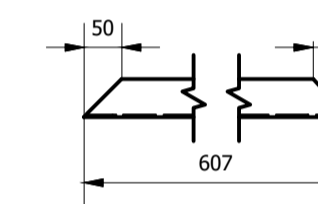
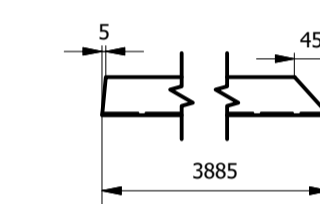
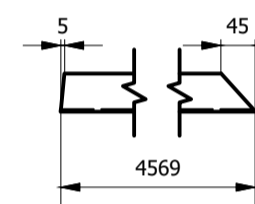
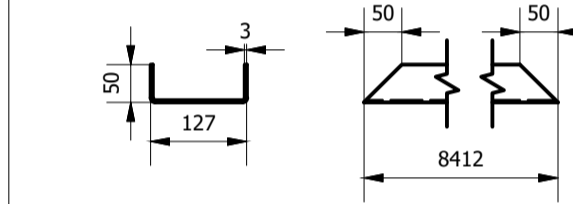
U1 (1 : 10)

U2 (1 : 10)

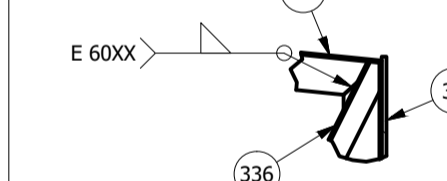
U3 (1 : 10)

U4 (1 : 10)

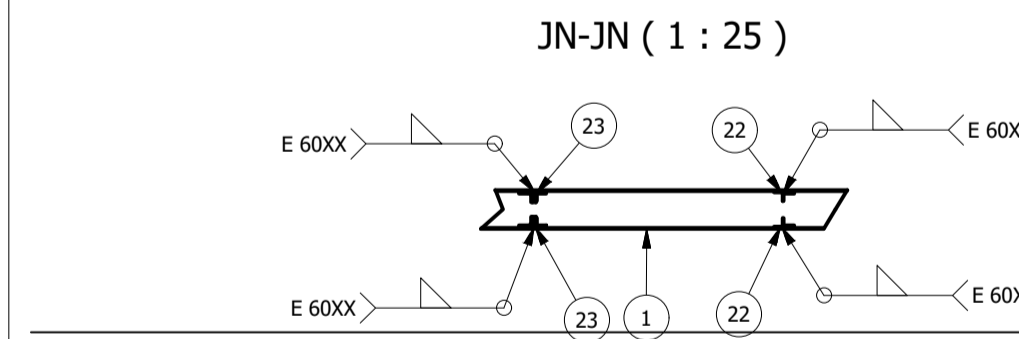
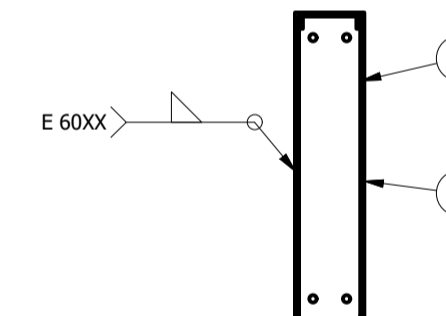
U5 (1 : 10)



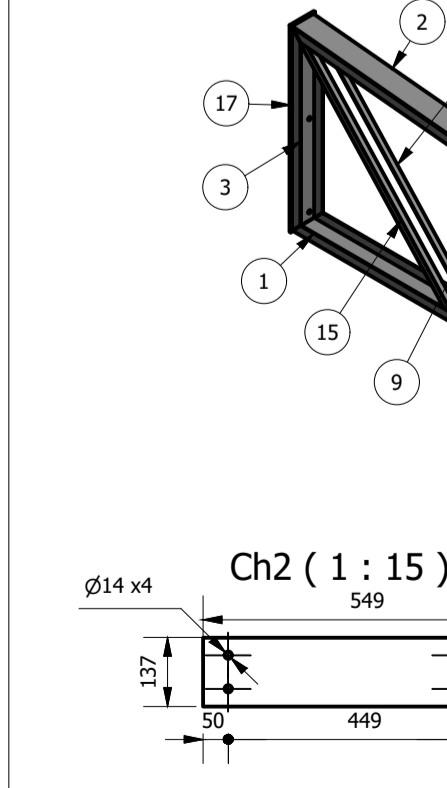
JM (1 : 10)



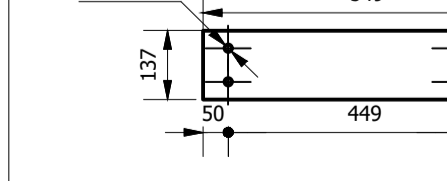
JP-JP (1 : 15)



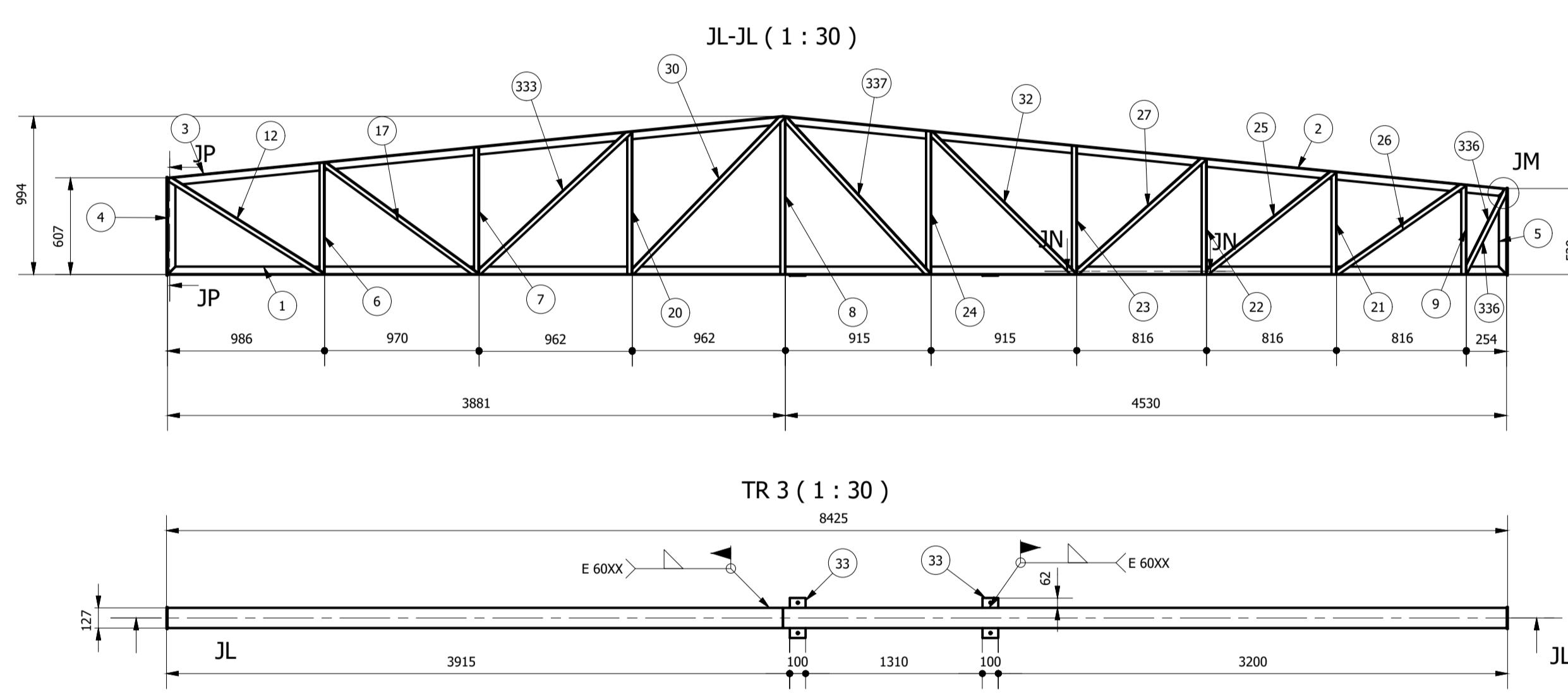
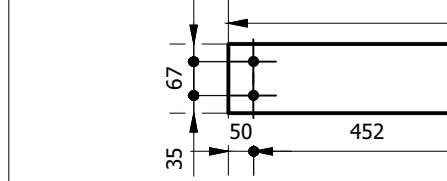
TR 4 (1 : 30)



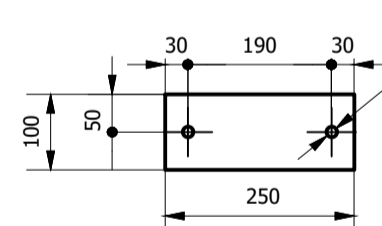
Ch2 (1 : 15)



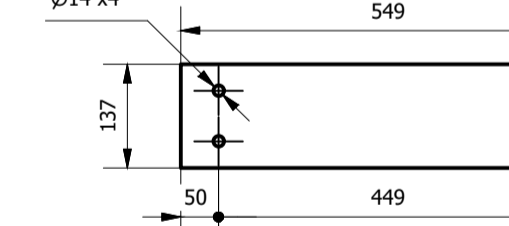
Ch3 (1 : 15)



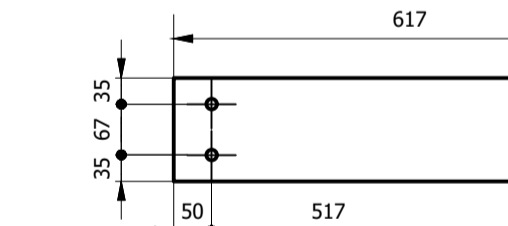
Ch1 (1 : 10)



Ch2 (1 : 10)



Ch3 (1 : 10)

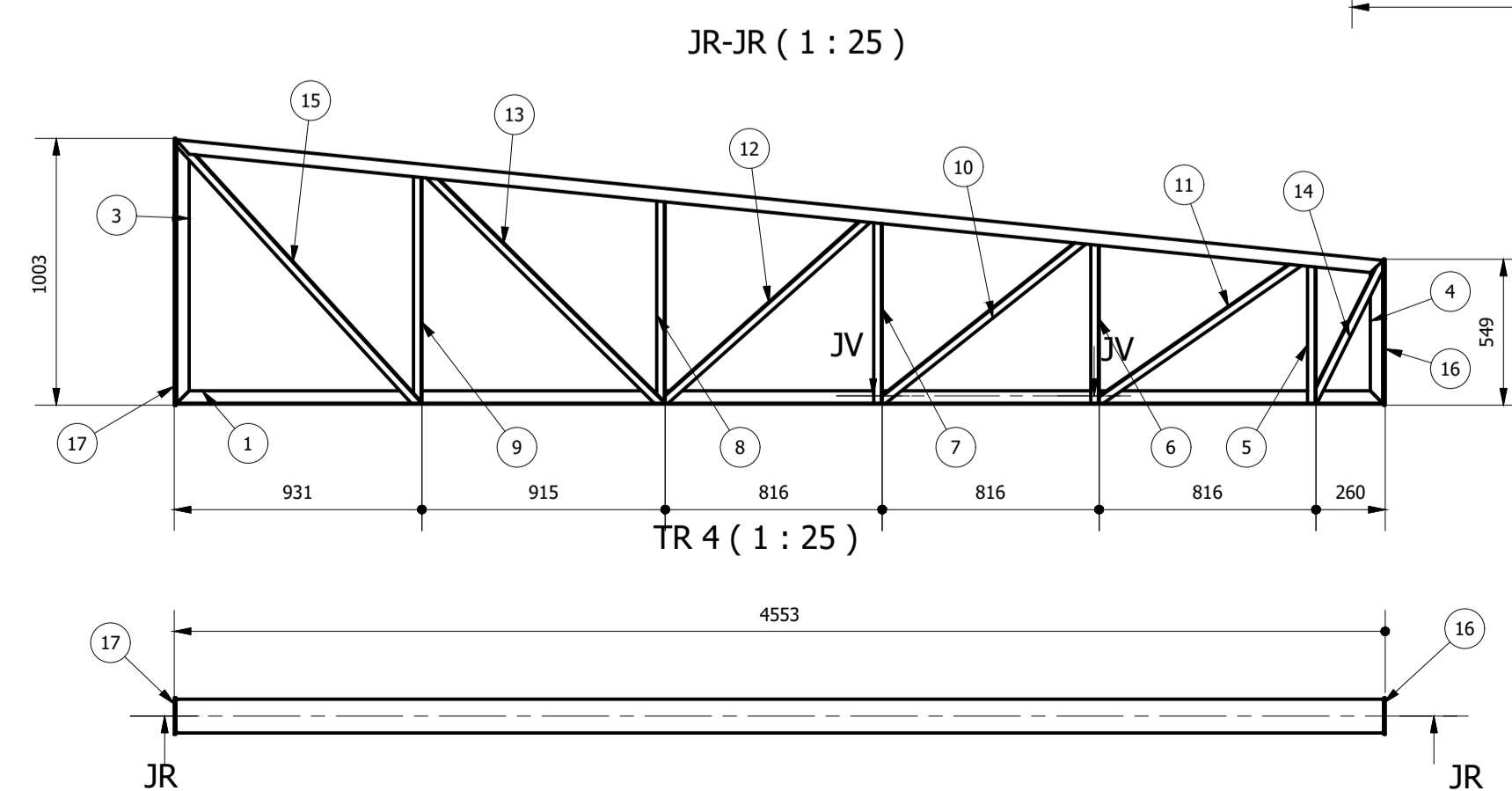
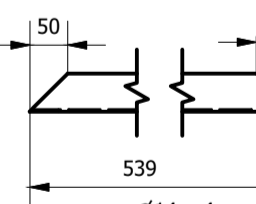
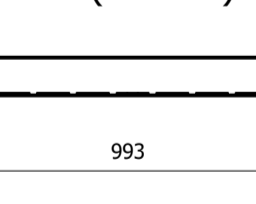
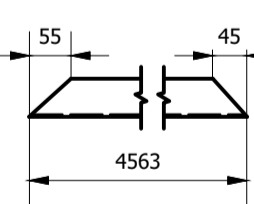
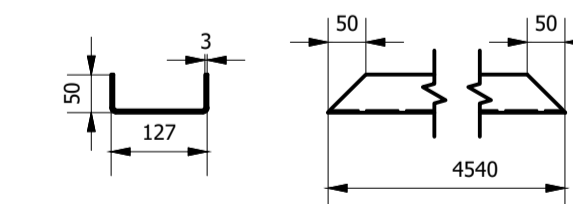


U1 (1 : 10)

U2 (1 : 10)

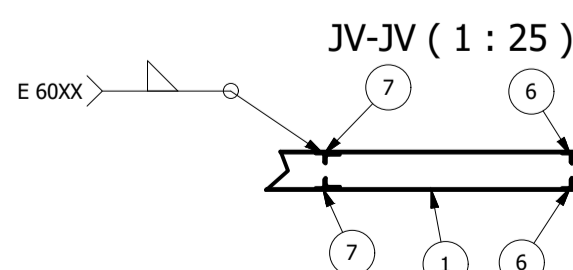
U3 (1 : 10)

U4 (1 : 10)



JR-JR (1 : 25)

TR 4 (1 : 25)



JV-JV (1 : 25)

ID	ITEM	QTD	DESCRIÇÃO	COMPR.	MATERIAL	PESO UN.
5	U5	1	UF 127 x 50 x 3	539	ASTM A36	2,6 kg
1	U1	1	UF 127 x 50 x 3	8411	ASTM A36	42,9 kg
2	U2	1	UF 127 x 50 x 3	4568	ASTM A36	23,3 kg
3	U3	1	UF 127 x 50 x 3	3884	ASTM A36	19,8 kg
4	U4	1	UF 127 x 50 x 3	607	ASTM A36	3,0 kg
7	L1	2	L 1.1.4 x 1.8	796	ASTM A36	1,3 kg
8	L3	2	L 1.1.4 x 1.8	989	ASTM A36	1,6 kg
9	L4	2	L 1.1.4 x 1.8	561	ASTM A36	0,9 kg
12	L5	2	L 1.1.4 x 1.8	1176	ASTM A36	1,8 kg
33	Ch1	2	6,35 x 250 x 100		ASTM A36	1,2 kg
6	L2	2	L 1.1.4 x 1.8	699	ASTM A36	1,1 kg
17	L6	2	L 1.1.4 x 1.8	1218	ASTM A36	1,9 kg
34	Ch2	1	6,35 x 137 x 549		ASTM A36	3,7 kg
35	Ch3	1	6,35 x 137 x 617		ASTM A36	4,2 kg
20	L9	2	L 1.1.4 x 1.8	893	ASTM A36	1,4 kg
21	L13	2	L 1.1.4 x 1.8	643	ASTM A36	1,0 kg
22	L12	2	L 1.1.4 x 1.8	724	ASTM A36	1,1 kg
23	L11	2	L 1.1.4 x 1.8	806	ASTM A36	1,3 kg
24	L10	2	L 1.1.4 x 1.8	897	ASTM A36	1,4 kg
25	L16	2	L 1.1.4 x 1.8	1045	ASTM A36	1,6 kg
26	L7	2	L 1.1.4 x 1.8	998	ASTM A36	1,5 kg
27	L17	2	L 1.1.4 x 1.8	1118	ASTM A36	1,7 kg
30	L15	2	L 1.1.4 x 1.8	1411	ASTM A36	2,1 kg
31	L18	2	L 1.1.4 x 1.8	1311	ASTM A36	2,0 kg
33	L14	2	L 1.1.4 x 1.8	1341	ASTM A36	2,0 kg
336	L8	2	L 1.1.4 x 1.8	624	ASTM A36	0,9 kg
337	L19	2	L 1.1.4 x 1.8	1380	ASTM A36	2,1 kg

REV. 00	13/04/20	EMISSÃO INICIAL	DAC
REVISÃO:	DATA:	DESCRIÇÃO:	RESP.:



<p>Rua Miguel Vianna, nº 81, Sala 12 Bairro Morro Chic CEP: 37500-080 - Itajubá / MG Tel: (35) 3623-5720 www.dacengenharia.com.br</p>	GERÊNCIA DE PROJETOS	DENIS DE SOUZA SILVA	CREA: MG-127.216/D
	COORDENAÇÃO DE PROJETOS	ALOGIO CAETANO FERREIRA	CREA: MG-97.132/D
	RESPONSÁVEL TÉCNICO	ENGR. CIVIL FLÁVIA C. BARBOSA	CREA: MG-187.842/D
	DESENHO	GERMÁN LOZANO VELA	

EMPRESAMENTO		IMPLANTAÇÃO DO CEMAPA E CENTRO POP	
ENDEREÇO	RUA PROJETADA, BAIRRO SANTA CECÍLIA POUSO ALEGRE - MINAS GERAIS	ESTAB.	EST. METÁLICA
ASSUNTO	PROJETO ESTRUTURAL DE ESTRUTURA METÁLICA COBERTURA METÁLICA COBERTURA 03 - DETALHAMENTO	FASE DO PROJETO	EXECUTIVO
DATA INICIAL	13/04/2020	FOLHA Nº.	06
ESCALA	INDICADA	ARQUIVO	DAC-PMPA-CEMAPA-PE-MET-ROO-05-06.DWG