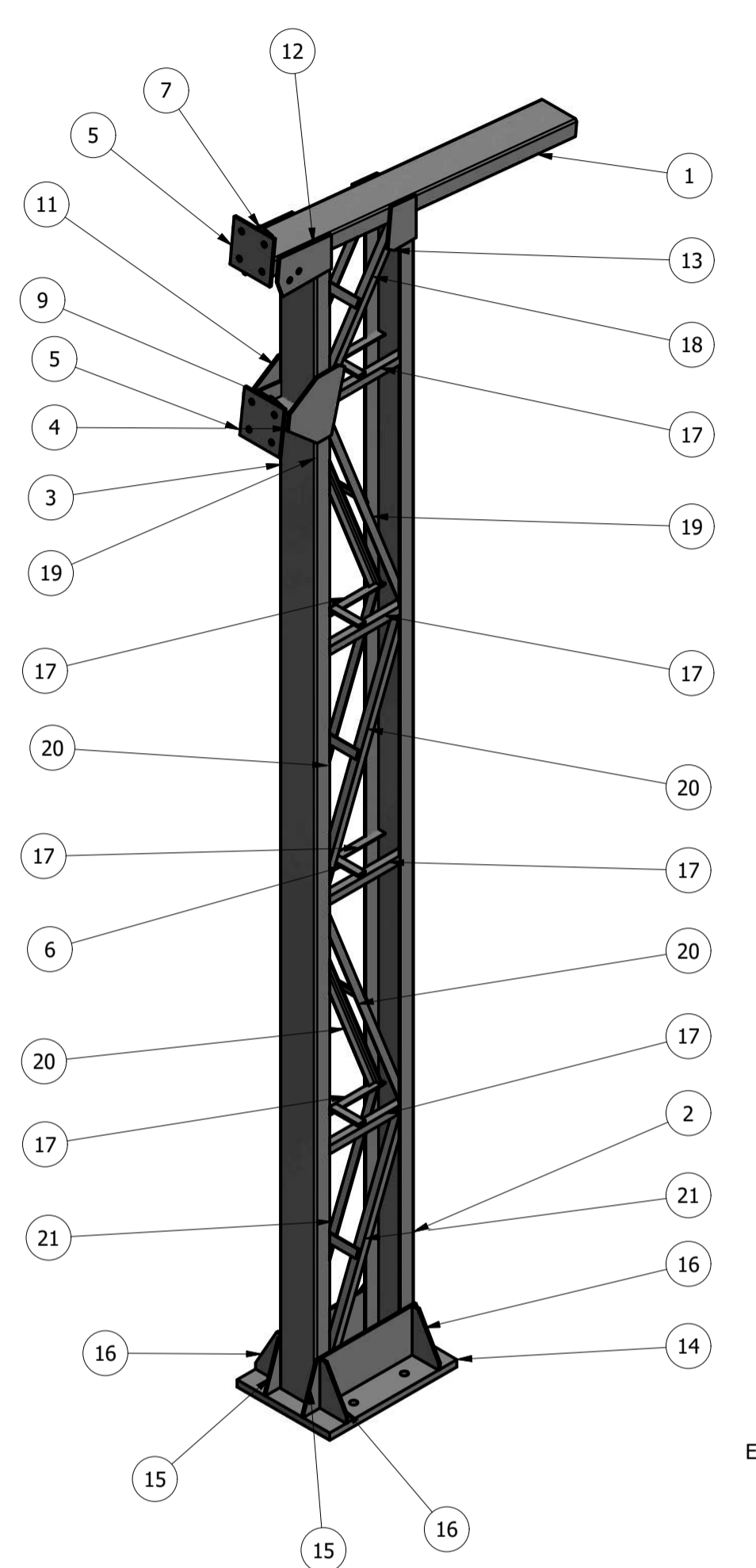
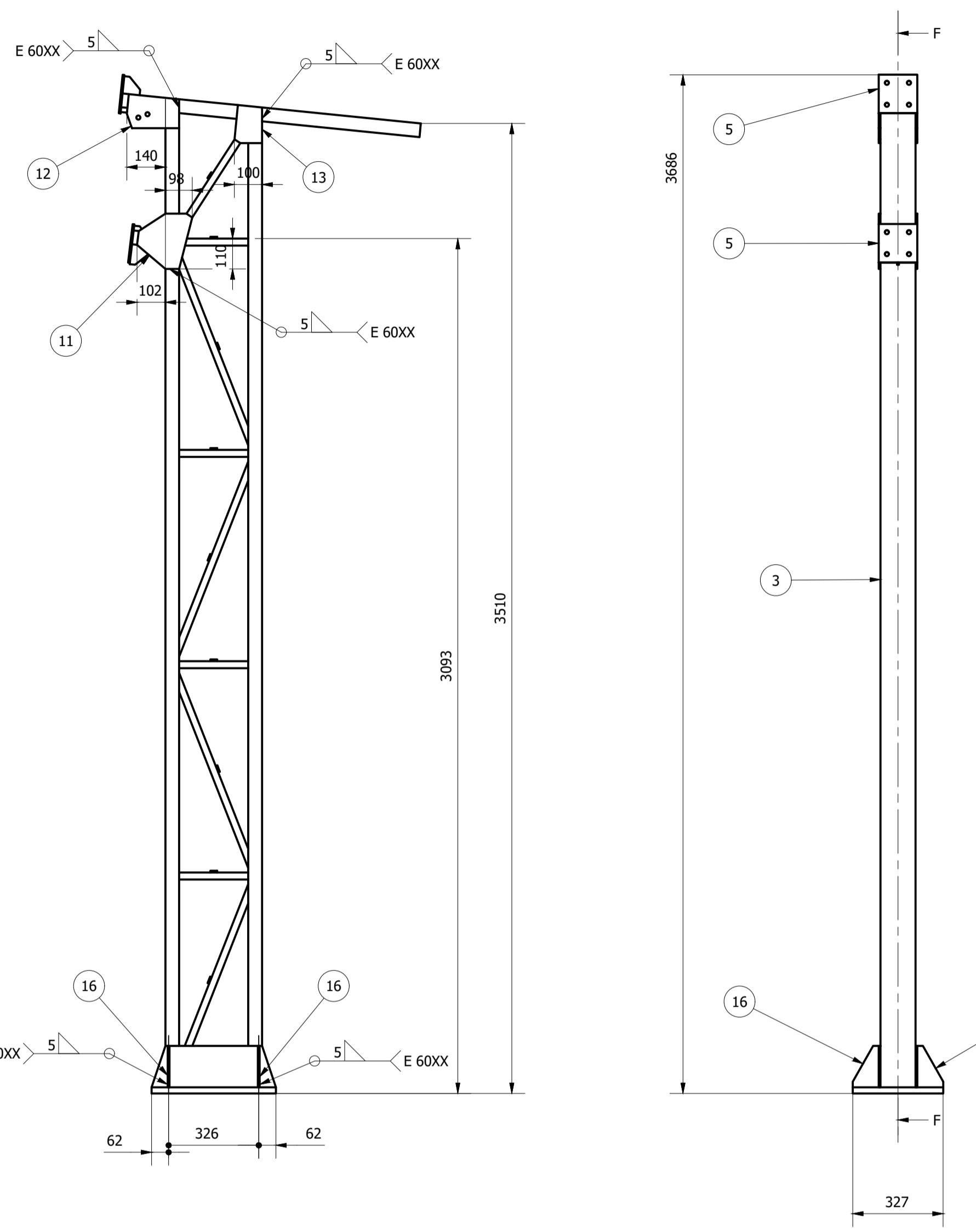


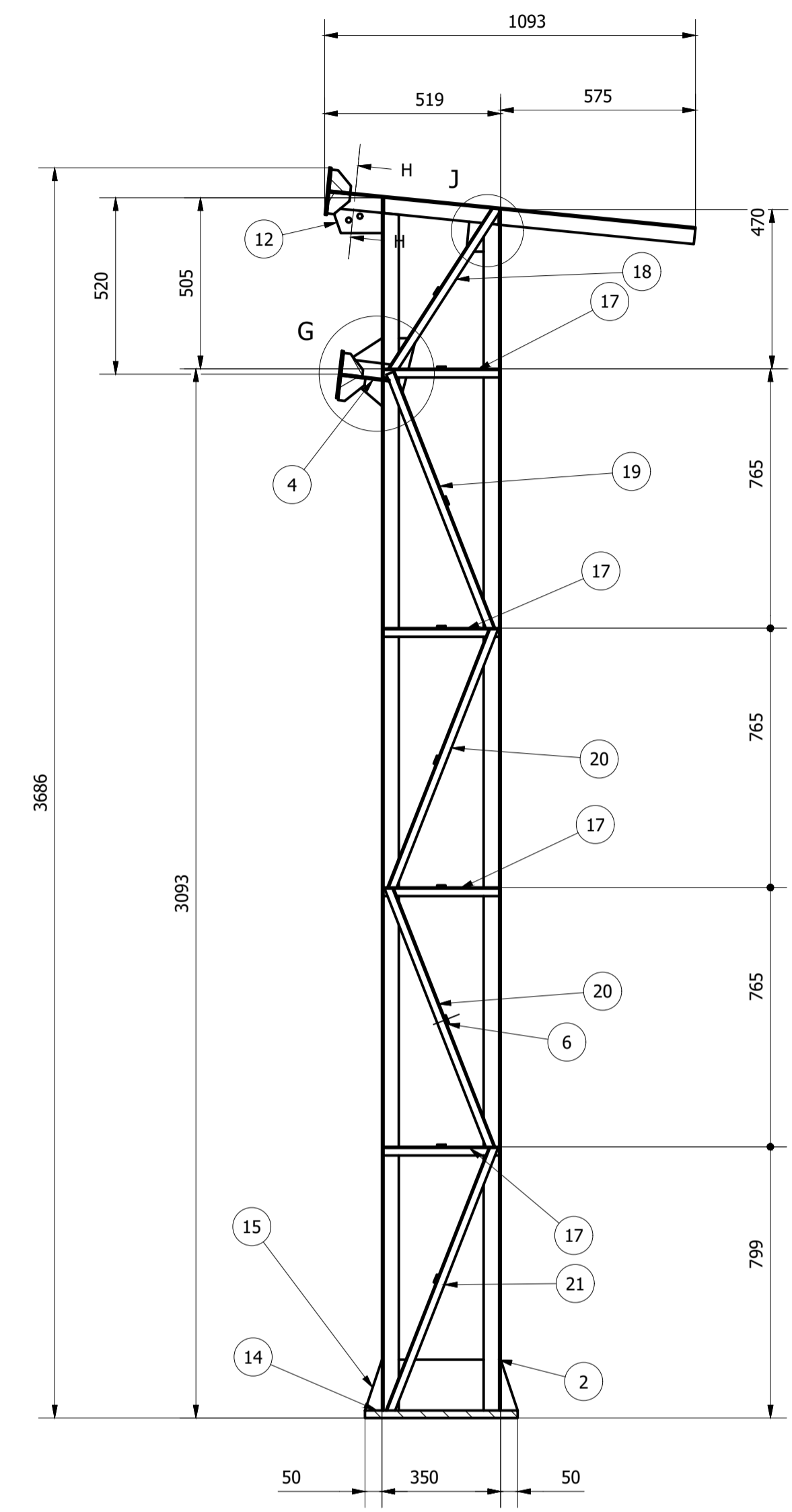
Pilar ( 1 : 15 )



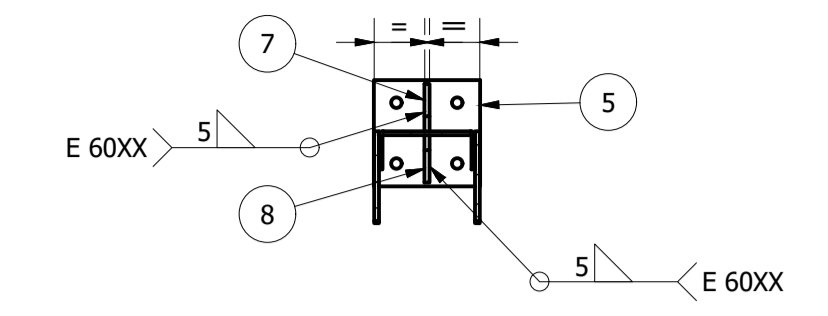
Pilar ( 1 : 15 )



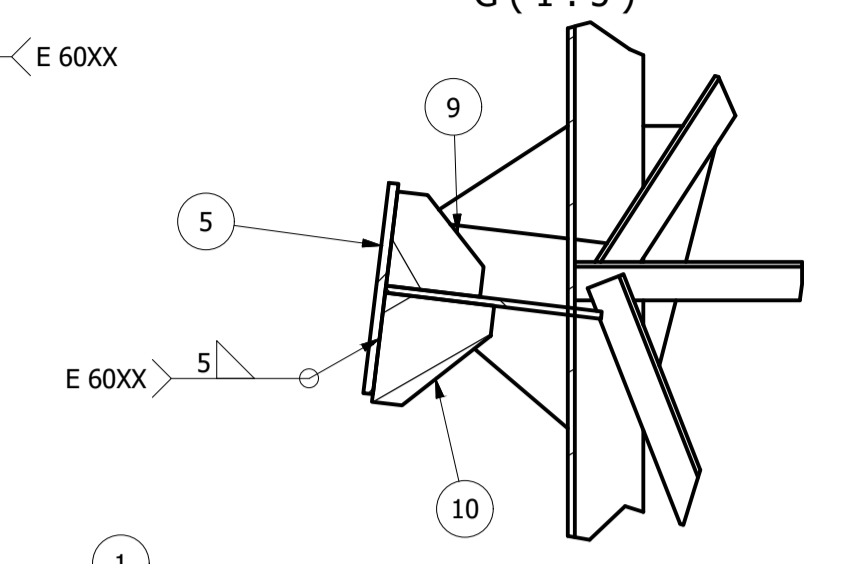
F-F ( 1 : 15 )



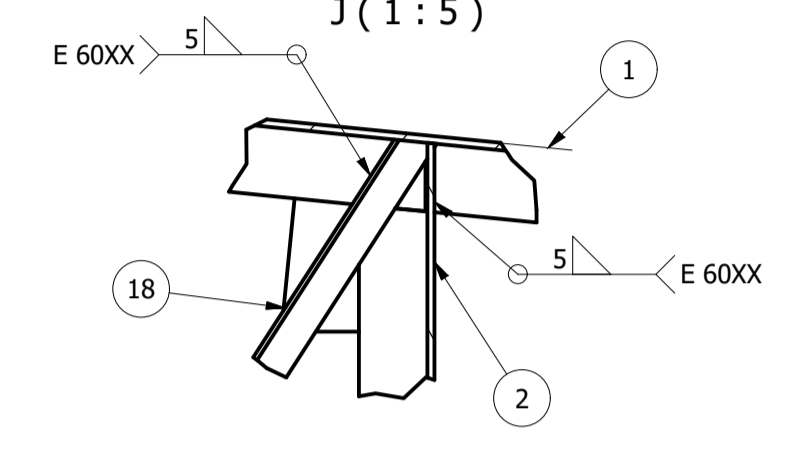
H-H ( 1 : 10 )



G ( 1 : 5 )



J ( 1 : 5 )



Peso total: 122,1 kg

LISTA DE QUANTIDADES						
ID	ITEM	QTD	DESCRIÇÃO	COMPRI.	MATERIAL	PESO UN.
1	UF1	1	UF 120 x50 x4,75	50	ASTM A36	8,7 kg
2	UF2	1	UF 120 x50 x4,75	50	ASTM A36	28,1 kg
3	UF3	1	UF 120 x50 x4,75	5657	ASTM A36	28,4 kg
4	UF4	1	UF 120 x50 x4,75	50	ASTM A36	1,1 kg
5	Ch1	2	6,35 x 140 x 140		ASTM A36	0,9 kg
6	Ch9	9	6,35 x 104 x 25		ASTM A36	0,1 kg
7	Ch10	1	6,35 x 62 x 62		ASTM A36	0,2 kg
8	Ch11	1	6,35 x 63 x 63		ASTM A36	0,2 kg
9	Ch12	1	6,35 x x 62		ASTM A36	0,2 kg
10	Ch13	1	6,35 x 72 x 72		ASTM A36	0,2 kg
11	Ch14	2	6,35 x 212 x 175		ASTM A36	1,4 kg
12	Ch18	2	6,35 x 123 x 189		ASTM A36	1,0 kg
13	Ch19	2	6,35 x 100 x 137		ASTM A36	0,6 kg
14	Ch22	1	22,225 x 327 x 450		ASTM A36	25,4 kg
15	Ch23	2	6,35 x 150 x 450		ASTM A36	3,0 kg
16	Ch24	4	6,35 x 150 x 93		ASTM A36	0,5 kg
17	L1	8	L 1 x 1,8	340	ASTM A36	0,4 kg
18	L2	2	L 1 x 1,8	575	ASTM A36	0,7 kg
19	L3	2	L 1 x 1,8	812	ASTM A36	1,0 kg
20	L4	4	L 1 x 1,8	827	ASTM A36	1,0 kg
21	L5	2	L 1 x 1,8	841	ASTM A36	1,0 kg

REV. 00	10/09/21	EMISSÃO INICIAL	DAC
REVISÃO:	DATA :	DESCRIÇÃO:	RESP.:

CLIENTE



Prefeitura Municipal de Pouso Alegre

PROJETO



DAC Engenharia  
Rua Miguel Vianna, nº 81, Sala 12  
Bairro Morro Chic  
CEP: 37500-080 - Itajubá / MG  
Tel: (35) 3623-5720  
www.dacengenharia.com.br

GERÊNCIA DE PROJETOS  
PEDRO JUSTINIANO

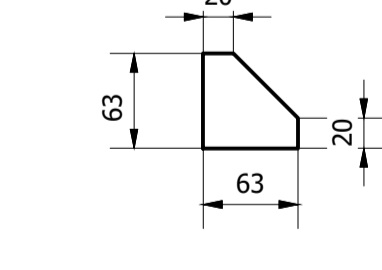
COORDENAÇÃO DE PROJETOS  
FLÁVIA CRISTINA BARBOSA CREA: MG-187.842/D

RESPONSÁVEL TÉCNICO  
ENGR. MECÂNICO RODRIGO RENNO CREA: MG-508193164/D  
ENGR. GERMÁN LOZANO VELA

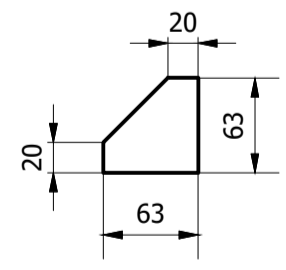
DESENHO  
ENGR. GERMÁN LOZANO VELA

EMPREENDIMENTO <b>IMPLANTAÇÃO DE COBERTURA - ESCOLA MUNICIPAL ANTÔNIO MARIOSA</b>		DISCIPLINA EST. METÁLICA
ENDEREÇO AVENIDA LUIZ GONZAGA NUNES MAIA, S/N. XANGRILÁ POUSO ALEGRE - MINAS GERAIS		FASE DO PROJETO EXECUTIVO
ASSUNTO PROJETO EM ESTRUTURA METÁLICA - COBERTURA 1 DETALHAMENTO DOS ELEMENTOS ESTRUTURAIS		FOLHA Nº. <b>03/03</b>
DATA INICIAL 17/03/2021	ESCALA INDICADA	REVISÃO ROO
ARQUIVO DAC-PMPA-CAIC-PE-MET-CB1-ROO.DWG		

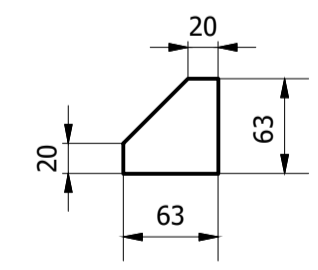
Ch10 ( 1 : 5 )



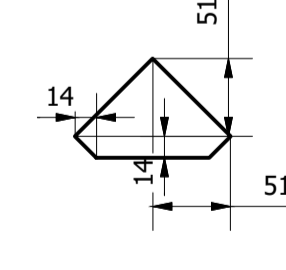
Ch11 ( 1 : 5 )



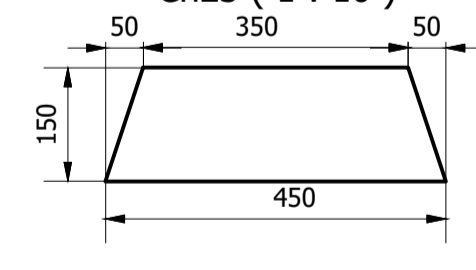
Ch12 ( 1 : 5 )



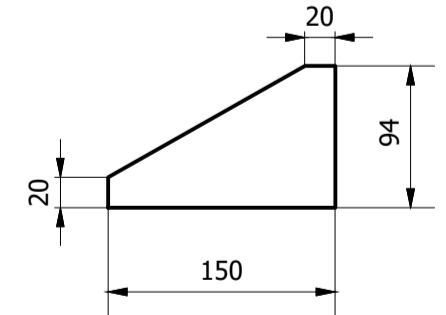
Ch13 ( 1 : 5 )



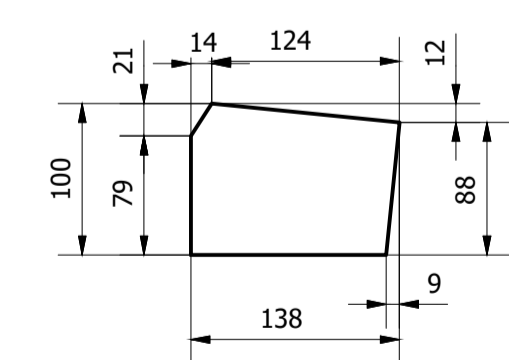
Ch23 ( 1 : 10 )



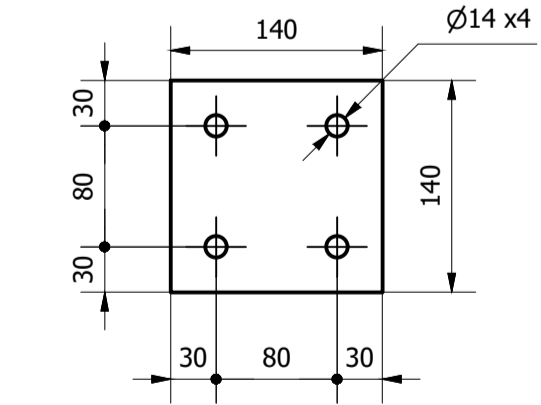
Ch24 ( 1 : 5 )



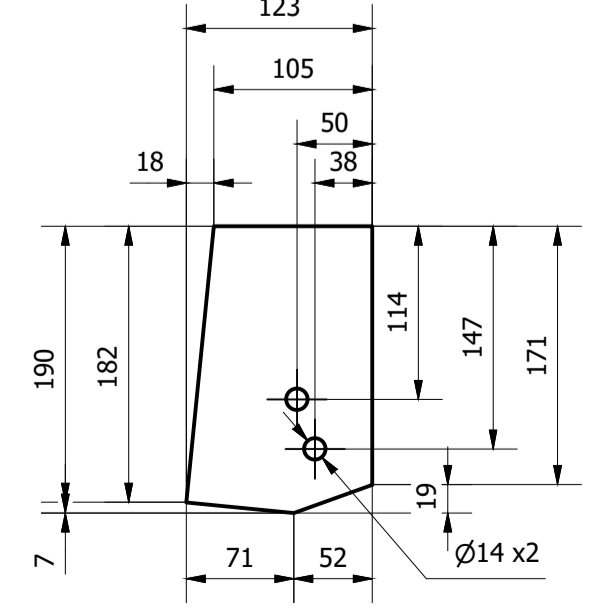
Ch19 ( 1 : 5 )



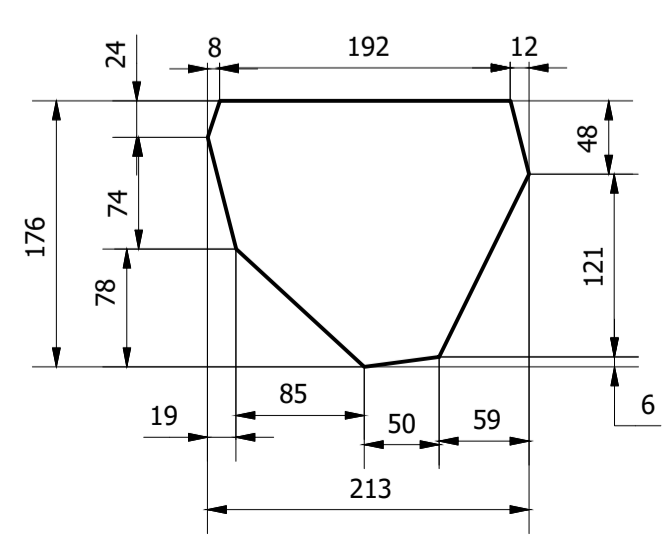
Ch1 ( 1 : 5 )



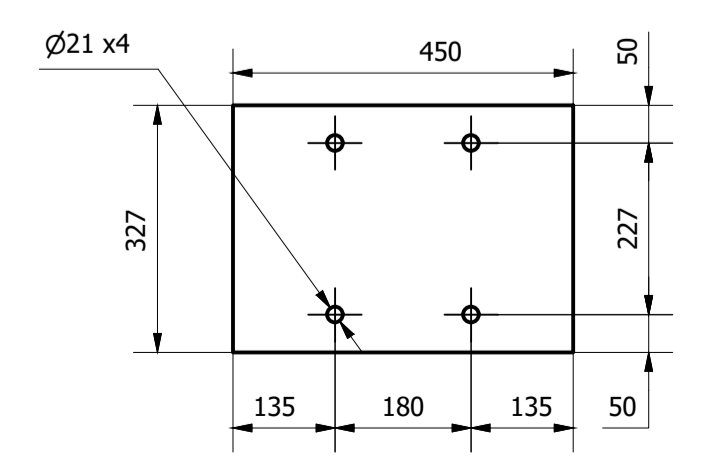
Ch18 ( 1 : 5 )



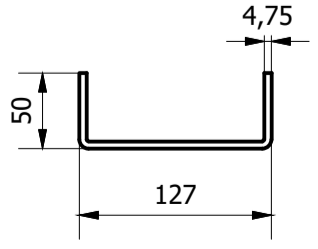
Ch14 ( 1 : 5 )



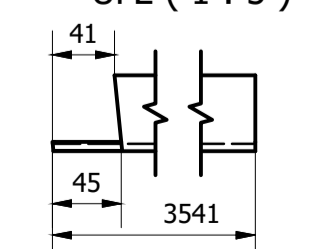
Ch22 ( 1 : 10 )



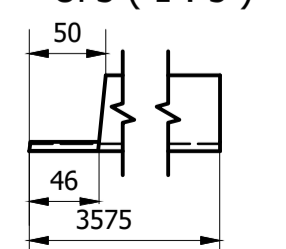
UF1 ( 1 : 5 )



UF2 ( 1 : 5 )



UF3 ( 1 : 5 )



UF4 ( 1 : 5 )

