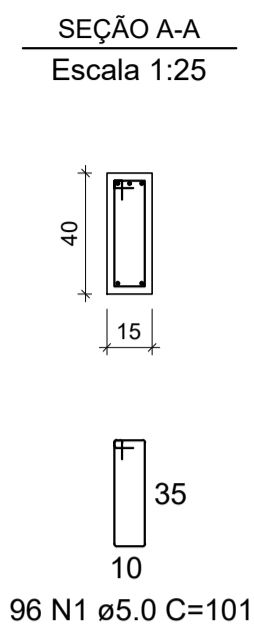
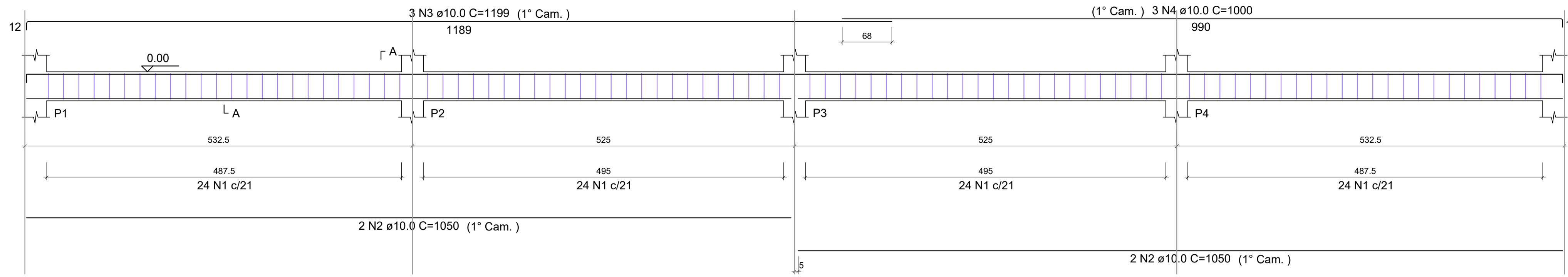
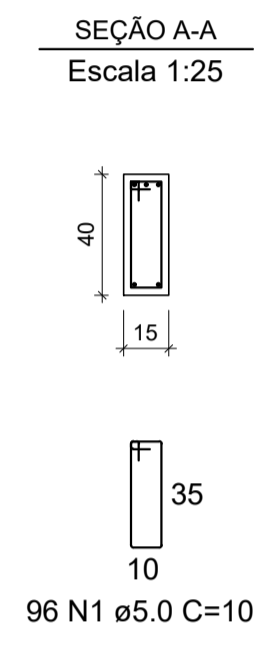
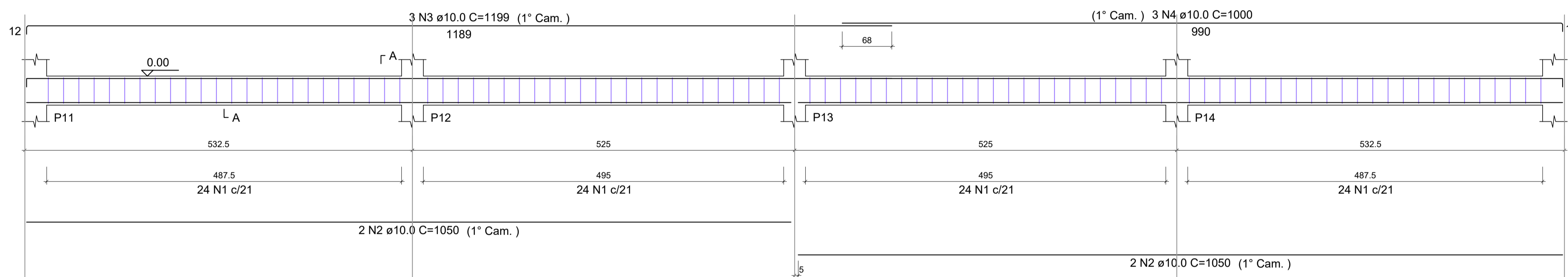


PROJETO ESTRUTURAL C.E.I.M. BENEDITA DE FÁTIMA CANADAS
ESCALA INDICADA

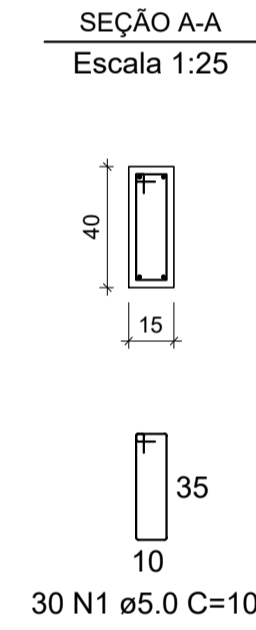
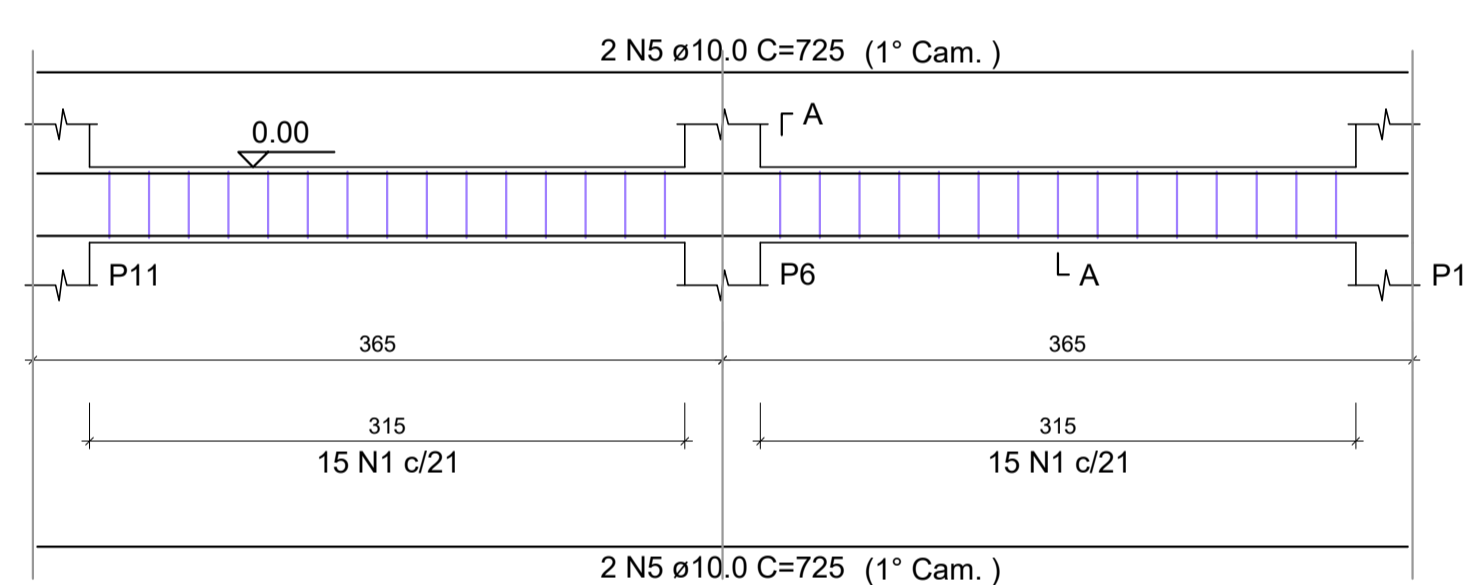
VB1
Escala 1:40



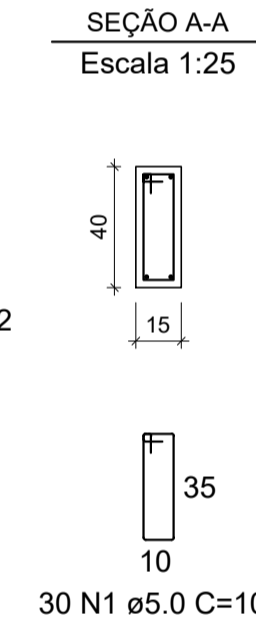
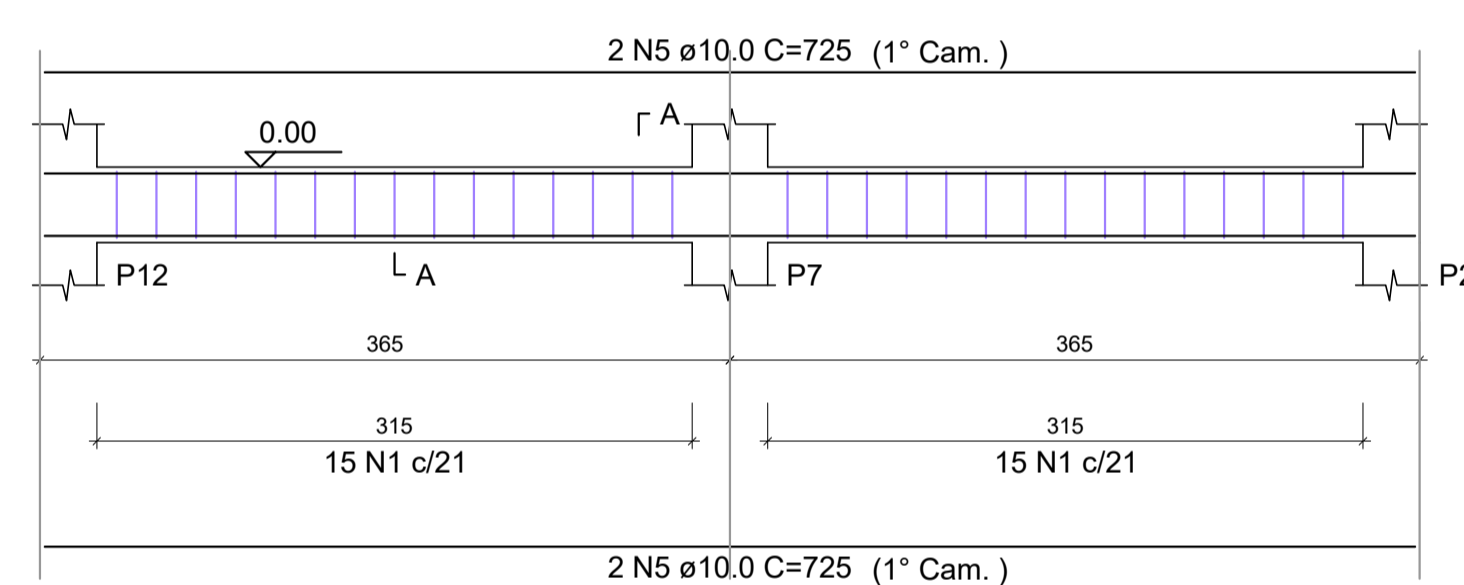
VB2
Escala 1:40



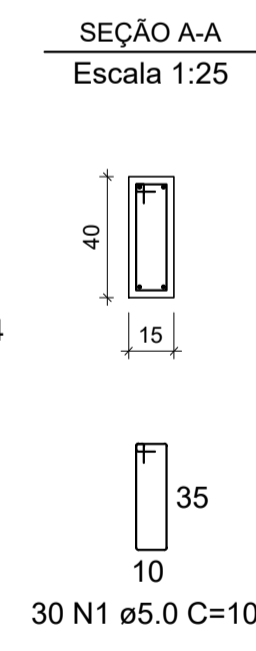
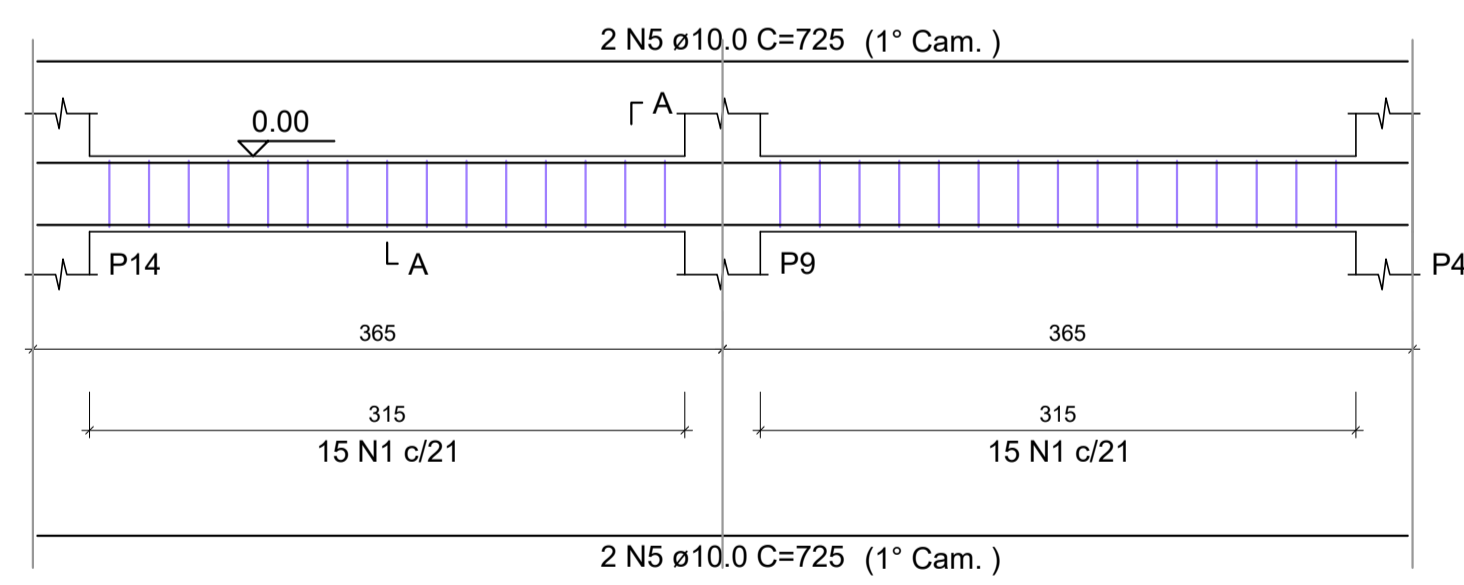
VB3
Escala 1:40



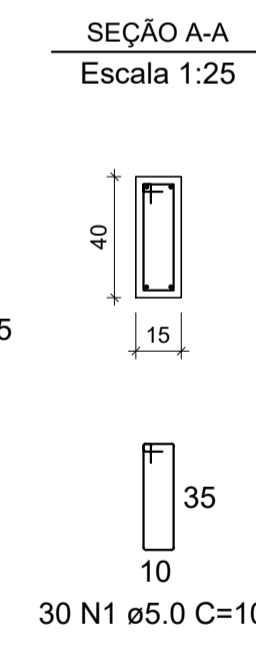
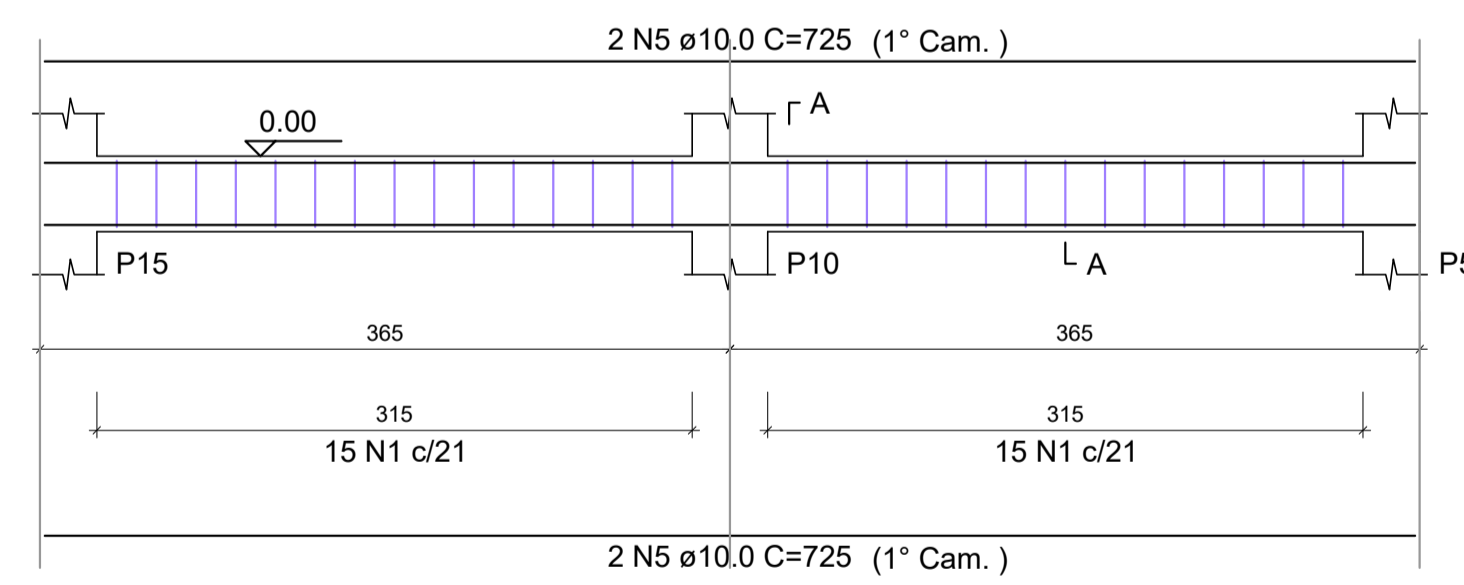
VB4
Escala 1:40



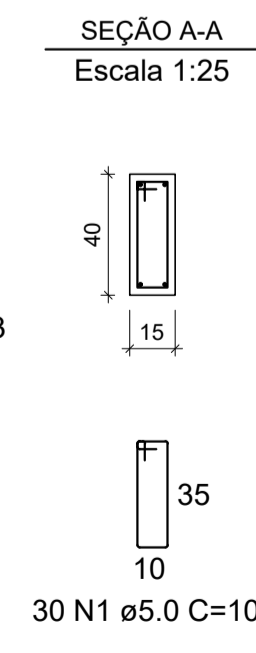
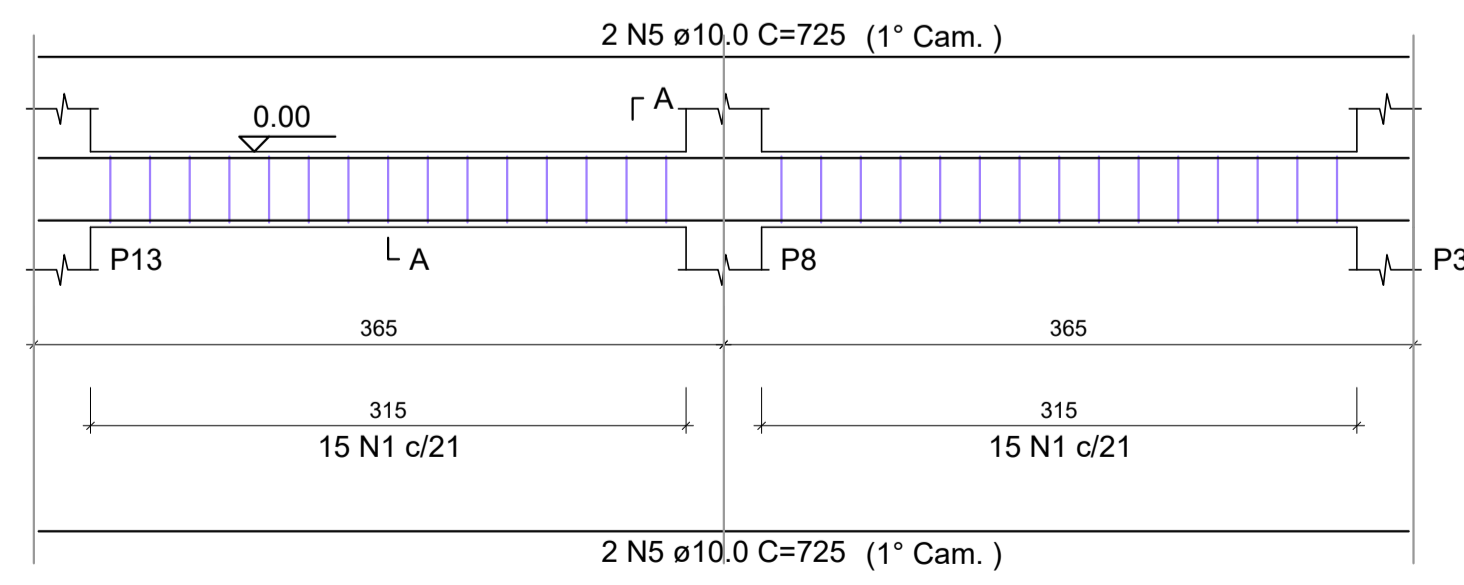
VB6
Escala 1:40



VB7
Escala 1:40



VB5
Escala 1:40



RELAÇÃO DO AÇO

AÇO	N	DIAM (mm)	QUANT	C.UNIT (cm)	C.TOTAL (cm)
CA60	1	5.0	342	101	34542
CA50	2	10.0	8	1050	8400
	3	10.0	6	1199	7194
	4	10.0	6	1000	6000
	5	10.0	20	725	14500

RESUMO DO AÇO

AÇO	DIAM (mm)	C.TOTAL (m)	QUANT + 10% (Barras)	PESO + 10% (kg)
CA50	10.0	360.9	34	244.8
CA60	5.0	345.4	32	58.6
PESO TOTAL (kg)				
CA50		244.8		
CA60		58.6		

Volume de concreto (C-25) = 4.73 m³
Área de forma = 74.86 m²

	
<p>REV. 00 15/07/20 EMISSÃO INICIAL</p> <p>REVISÃO: DATA : DESCRIÇÃO: RESP.:</p>	<p>CLIENTE</p>
 <p>Rua Miguel Vianna, nº 81, Sala 12 Bairro Morro Chic CEP: 37500-080 - Itajubá / MG Tel: (35) 3623-5720 www.dacengenharia.com.br</p>	<p>GERÊNCIA DE PROJETOS DENIS DE SOUZA SILVA CREA: MG-127.216/D</p> <p>COORDENAÇÃO DE PROJETOS ALOSIO CAETANO FERREIRA CREA: MG-97.132/D</p> <p>RESPONSÁVEL TÉCNICO ENGR. CIVIL FLÁVIA C. BARBOSA CREA: MG-187.842/D ENGR. CIVIL WILLIAM BARADEL LARI</p>
<p>EMPREENDIMENTO</p> <p>REFORMA E AMPLIAÇÃO DA CEIM PROF. BENEDITA F. CANADAS</p>	
<p>ENDEREÇO</p> <p>RUA NILSON PEREIRA COSTA, 04 - BAIRRO JATOBA POUSO ALEGRE - MINAS GERAIS</p>	<p>DISCIPLINA</p> <p>ESTRUTURAL</p>
<p>ASSUNTO</p> <p>PROJETO ESTRUTURAL EM CONCRETO ARMADO PLANTA DE DETALHAMENTO DAS FERRAGENS VIGAS BALDRAME</p>	<p>FASE DO PROJETO</p> <p>EXECUTIVO</p>
<p>DATA INICIAL</p> <p>15/07/2020</p>	<p>ESCALA</p> <p>INDICADA</p>
<p>REVISÃO</p> <p>ROO</p>	<p>ARQUIVO</p> <p>DAC-PMPA-BEN-PE-EST-ROO.DWG</p>
<p>FOLHA Nº.</p> <p>04/09</p>	