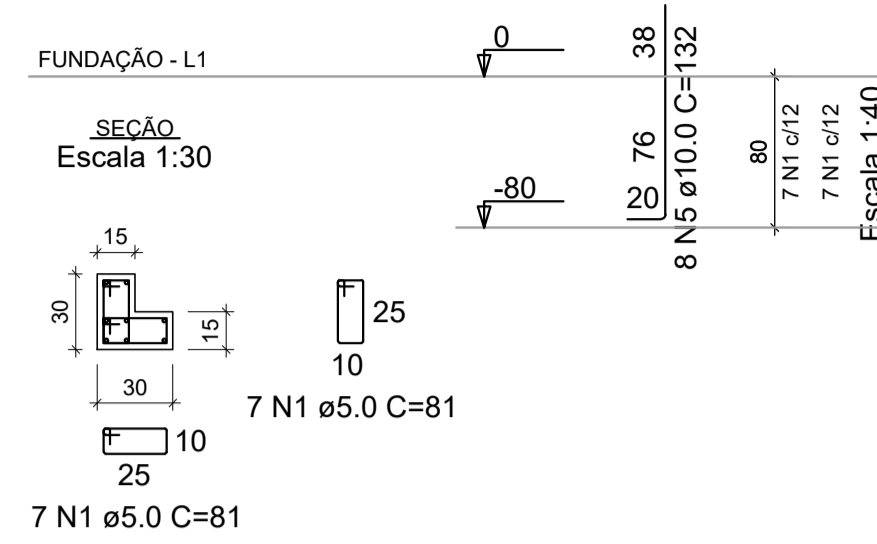
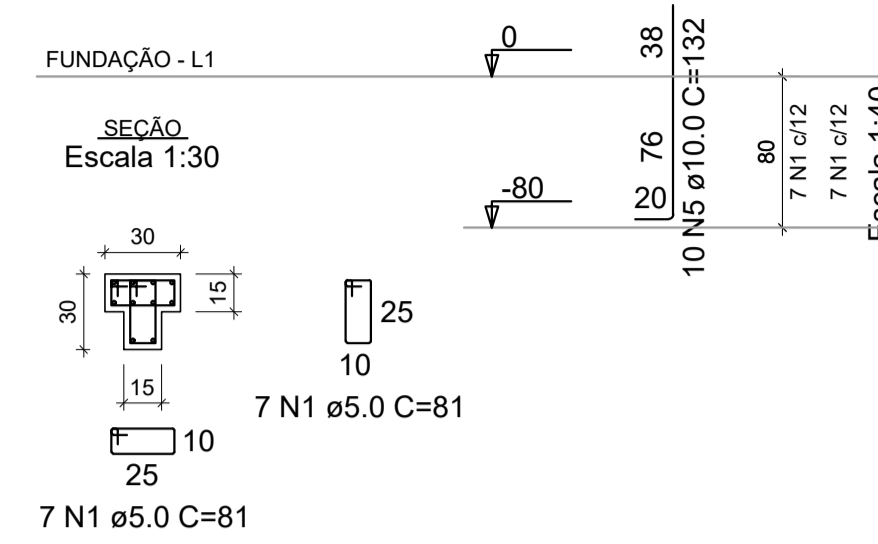


PROJETO ESTRUTURAL C.E.I.M. BENEDITA DE FÁTIMA CANADAS
ESCALA INDICADA

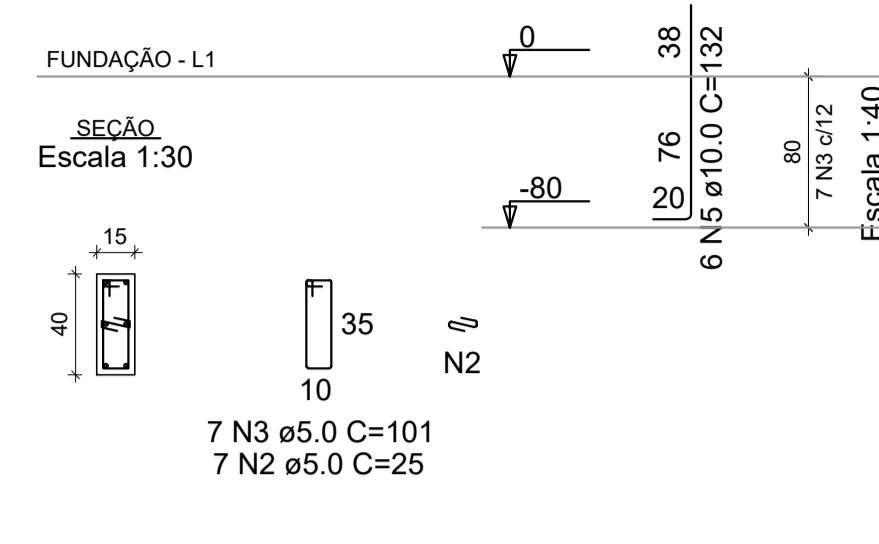
P1=P5=P11=P15



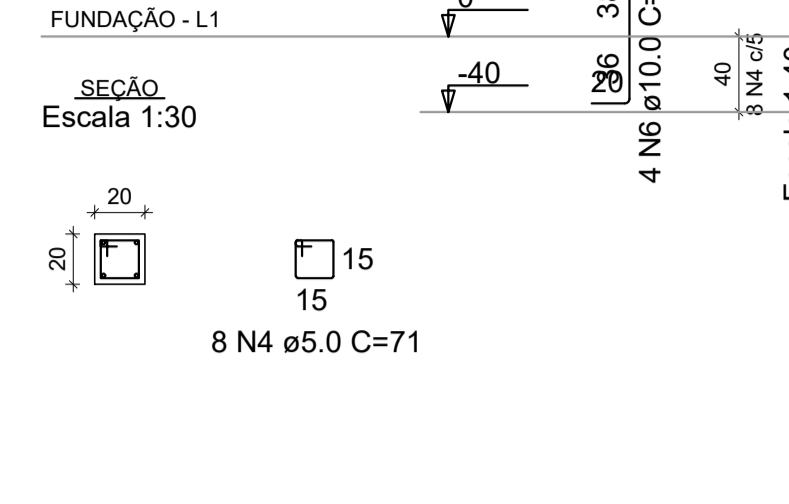
P2=P3=P4=P12=P13=P14



P6=P7=P8=P9=P10



P16=P17



RELAÇÃO DO AÇO

AÇO	N	DIAM (mm)	QUANT	C.UNIT (cm)	C.TOTAL (cm)
CA60	1	5.0	140	81	11340
CA50	2	5.0	35	25	875
CA50	3	5.0	35	101	3535
CA50	4	5.0	16	71	1136
CA50	5	10.0	122	132	16104
CA50	6	10.0	8	92	736

RESUMO DO AÇO

AÇO	DIAM (mm)	C.TOTAL (m)	QUANT + 10% (Barras)	PESO + 10% (kg)
CA50	10.0	168.4	16	114.2
CA60	5.0	168.9	16	28.6
PESO TOTAL (kg)				
CA50		114.2		
CA60		28.6		

Volume de concreto (C-25) = 0.81 m³
Área de forma = 14.64 m²

RELAÇÃO DO AÇO

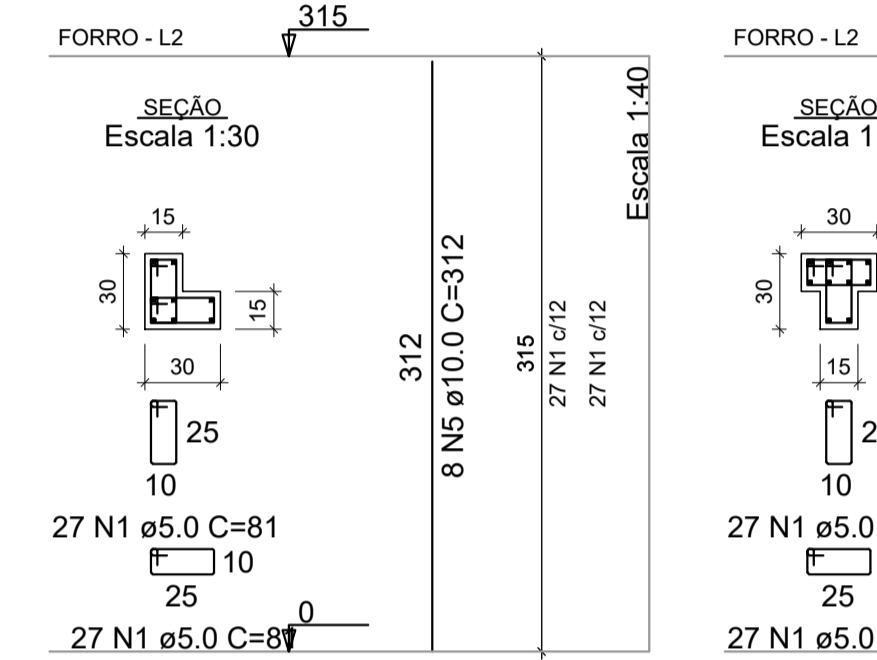
AÇO	N	DIAM (mm)	QUANT	C.UNIT (cm)	C.TOTAL (cm)
CA60	1	5.0	540	81	43740
CA50	2	5.0	145	25	3625
CA50	3	5.0	145	101	14645
CA50	4	5.0	54	71	3834
CA50	5	10.0	100	312	31200
CA50	6	10.0	30	345	10350

RESUMO DO AÇO

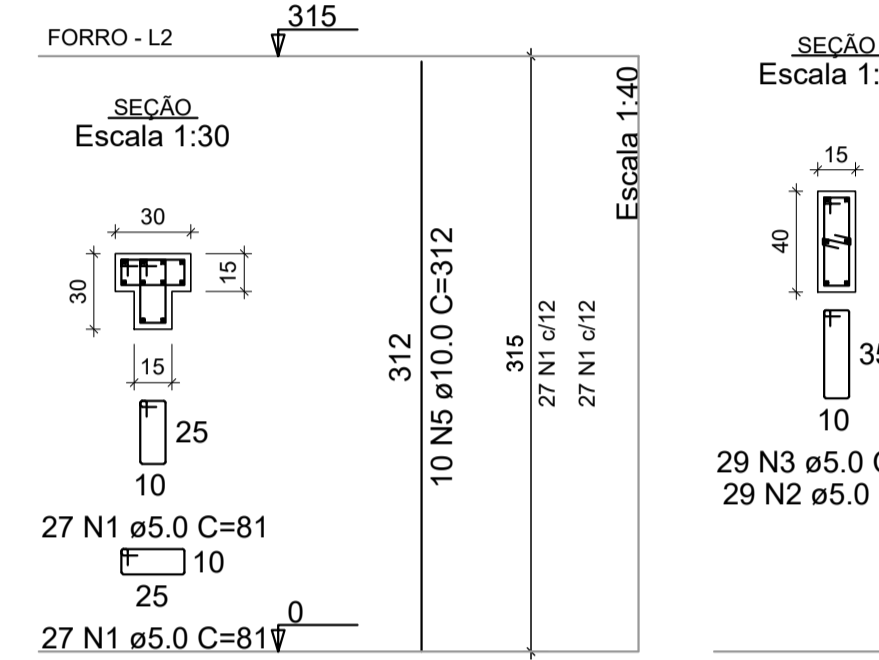
AÇO	DIAM (mm)	C.TOTAL (m)	QUANT + 10% (Barras)	PESO + 10% (kg)
CA50	10.0	415.5	39	281.8
CA60	5.0	658.4	61	111.6
PESO TOTAL (kg)				
CA50		281.8		
CA60		111.6		

Volume de concreto (C-25) = 3.42 m³
Área de forma = 61.98 m²

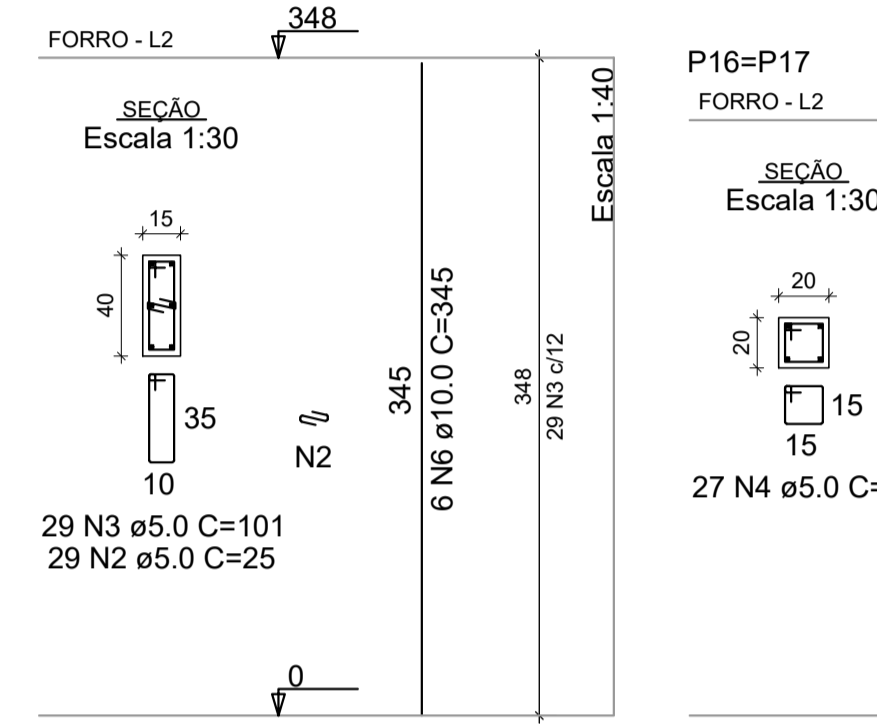
P1=P5=P11=P15



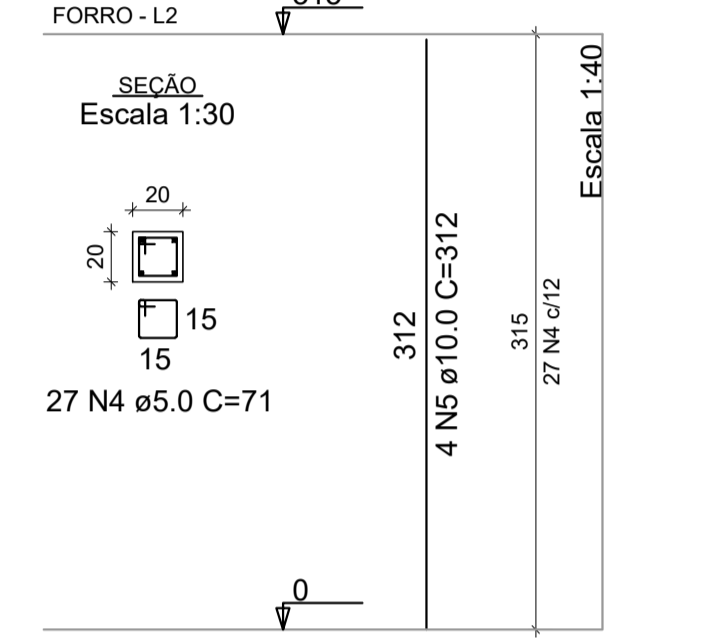
P2=P3=P4=P12=P13=P14



P6=P7=P8=P9=P10



P16=P17



RELAÇÃO DO AÇO

VT1a	13xVT2a	13xVT3a
13xVT4a	13xVT5a	VT6a
9xVT7a	13xVT8a	13xVT9a
13xVT10a	13xVT11a	9xVT12a
9xVT13a	13xVT14a	13xVT15a
13xVT16a	13xVT17a	9xVT18a
VT19a	13xVT20a	3xVT21a
10xVT21b	10xVT22a	3xVT22b
13xVT23a	VT24a	6xVT25a

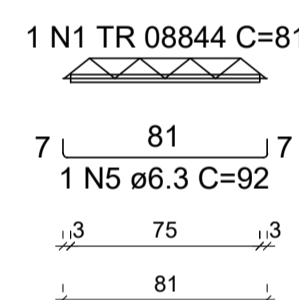
AÇO	N	DIAM (mm)	QUANT	C.UNIT (cm)	C.TOTAL (cm)
CA60	1	TR 08844	138	81	11178
CA60	2	TR 08844	104	359	37336
CA60	3	TR 08844	6	85	510
CA60	4	TR 08844	6	216	1296
CA50	5	6.3	138	92	12696
CA50	6	6.3	104	370	38480
CA50	7	6.3	6	96	576
CA50	8	6.3	6	227	1362

RESUMO DO AÇO

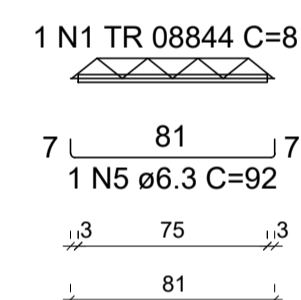
AÇO	DIAM (mm)	C.TOTAL (m)	QUANT + 10% (Barras)	PESO + 10% (kg)
CA50	6.3	531.1	49	143
CA60	TR 08844	503.2	-	502
PESO TOTAL (kg)				
CA50		143		
CA60		502		

Volume de concreto (C-25) = 0.00 m³
Área de forma = 0.00 m²

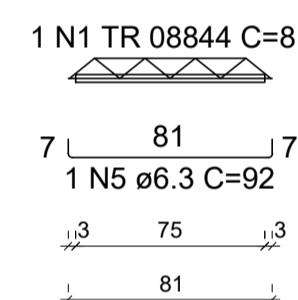
VT1a (1 unidades)
(L1)
ESC 1:30



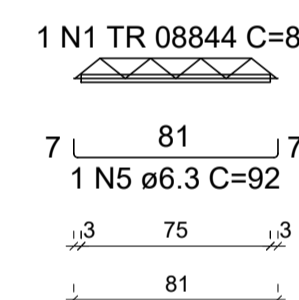
VT2a (13 unidades)
(L2)
ESC 1:30



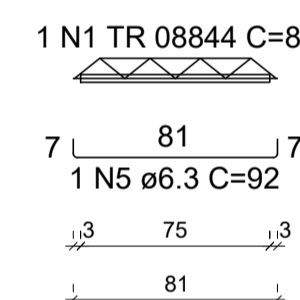
VT3a (13 unidades)
(L3)
ESC 1:30



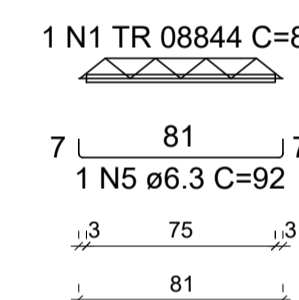
VT4a (13 unidades)
(L4)
ESC 1:30



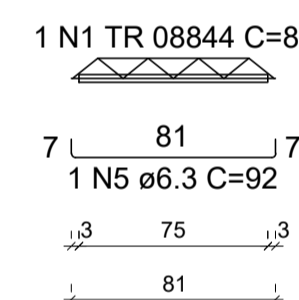
VT5a (13 unidades)
(L5)
ESC 1:30



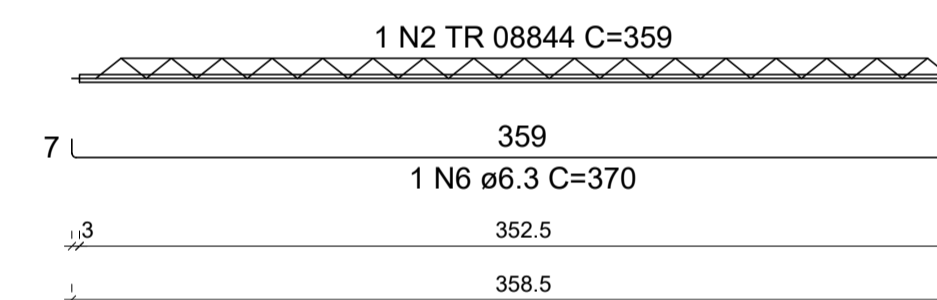
VT6a (1 unidades)
(L6)
ESC 1:30



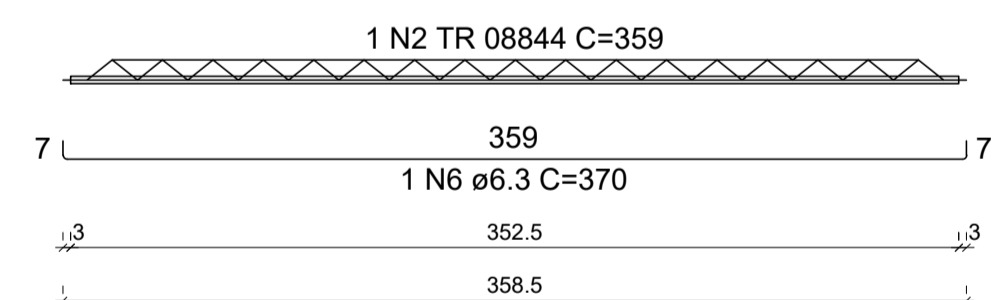
VT7a (9 unidades)
(L7)
ESC 1:30



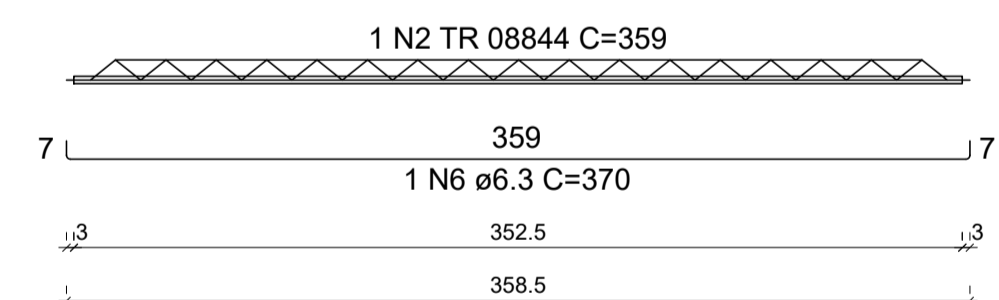
VT8a (13 unidades)
(L8)
ESC 1:30



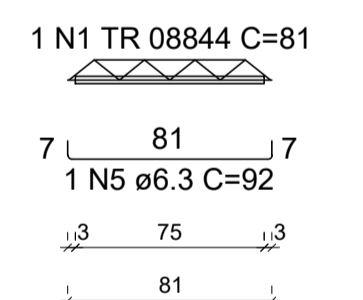
VT10a (13 unidades)
(L10)
ESC 1:30



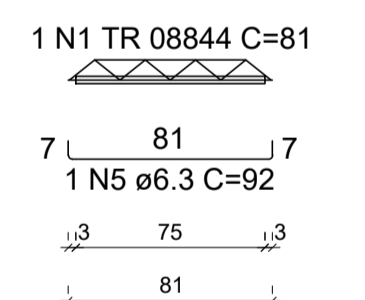
VT11a (13 unidades)
(L11)
ESC 1:30



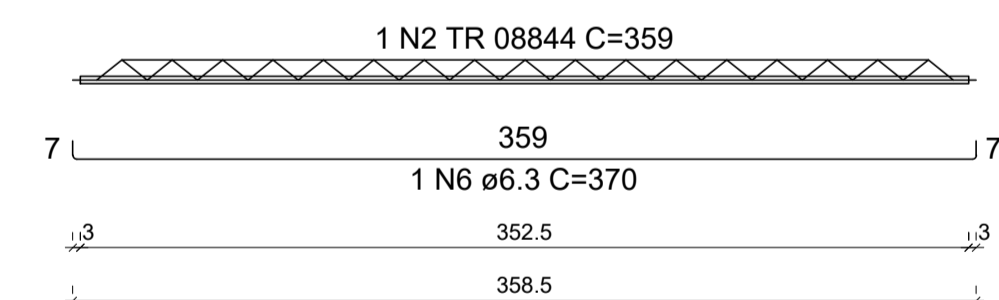
VT12a (9 unidades)
(L12)
ESC 1:30



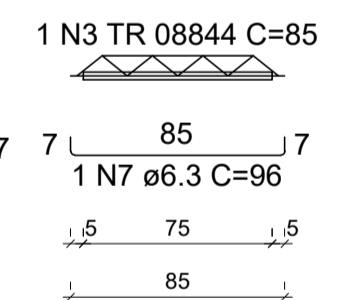
VT13a (9 unidades)
(L13)
ESC 1:30



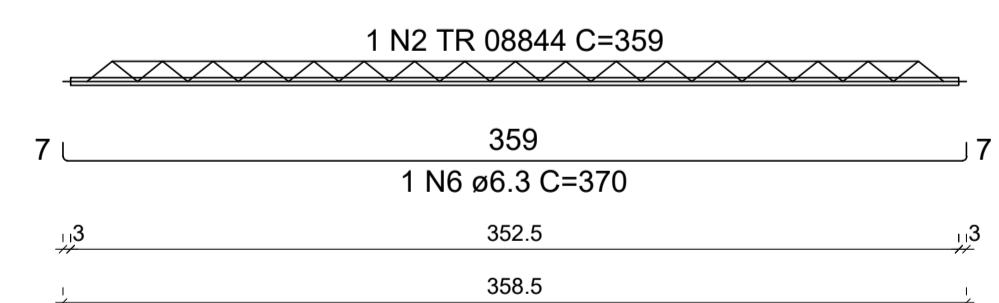
VT14a (13 unidades)
(L14)
ESC 1:30



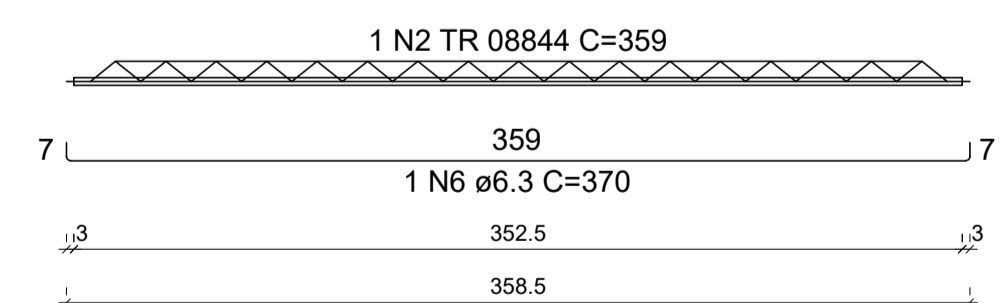
VT22b (3 unidades)
(L22)
ESC 1:30



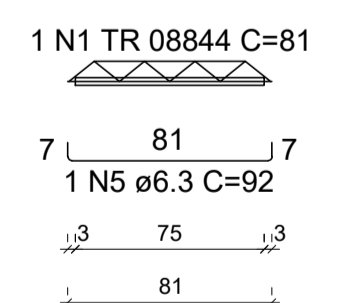
VT16a (13 unidades)
(L16)
ESC 1:30



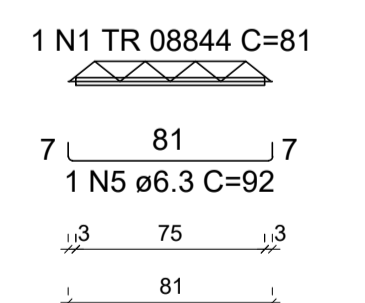
VT17a (13 unidades)
(L17)
ESC 1:30



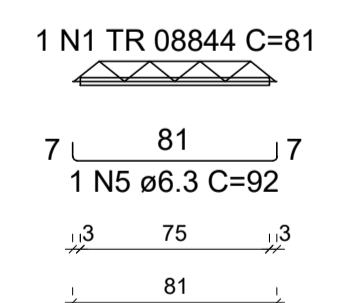
VT18a (9 unidades)
(L18)
ESC 1:30



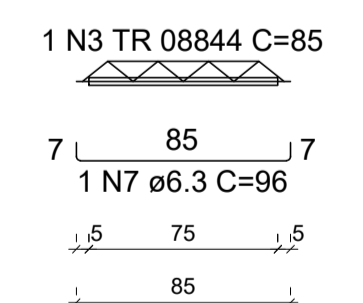
VT19a (1 unidades)
(L19)
ESC 1:30



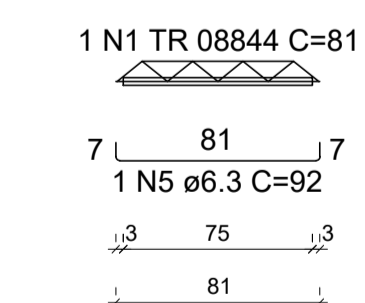
VT20a (13 unidades)
(L20)
ESC 1:30



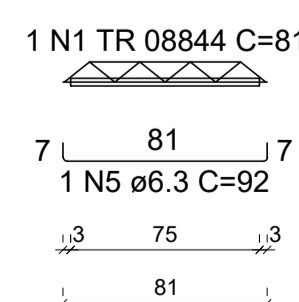
VT21a (3 unidades)
(L21)
ESC 1:30



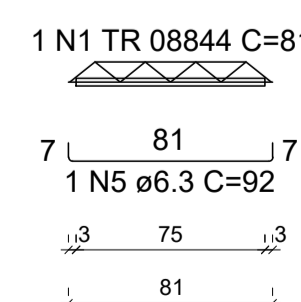
VT21b (10 unidades)
(L21)
ESC 1:30



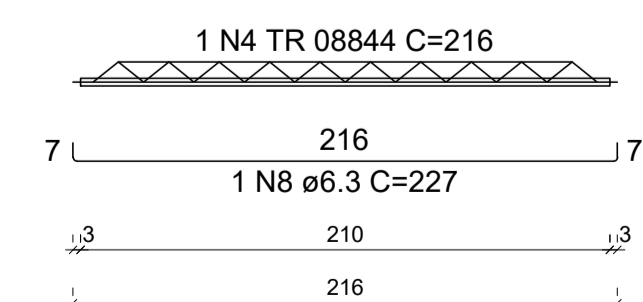
VT23a (13 unidades)
(L23)
ESC 1:30



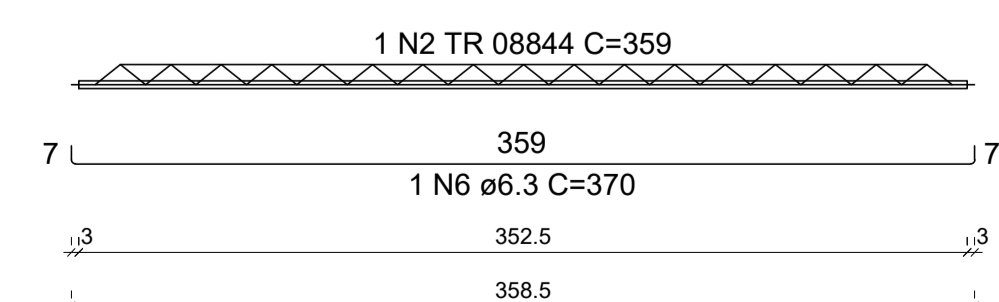
VT24a (1 unidades)
(L24)
ESC 1:30



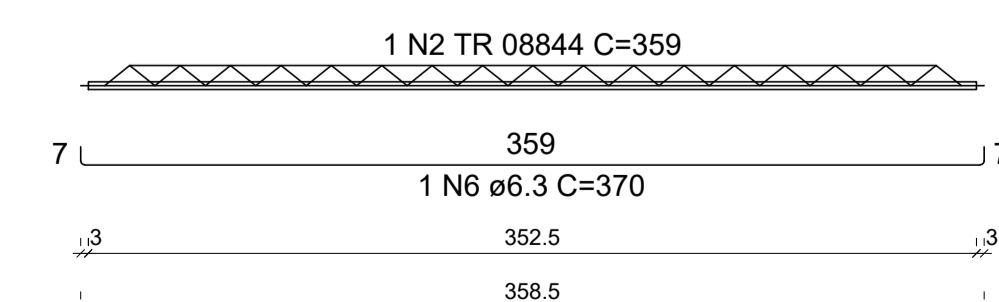
VT25a (6 unidades)
(L25)
ESC 1:30



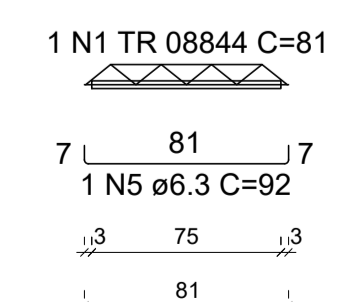
VT9a (13 unidades)
(L9)
ESC 1:30



VT15a (13 unidades)
(L15)
ESC 1:30



VT22a (10 unidades)
(L22)
ESC 1:30



REV. 00	15/07/20	EMISSÃO INICIAL	DAC
REVISÃO:	DATA :	DESCRIÇÃO:	RESP.:
		GERÊNCIA DE PROJETOS DENIS DE SOUZA SILVA CREA: MG-127.216/D COORDENAÇÃO DE PROJETOS ALDOISO CAETANO FERREIRA CREA: MG-97.132/D RESPONSÁVEL TÉCNICO ENG. CIVIL FLÁVIA C. BARBOSA CREA: MG-187.842/D ENG. CIVIL WILLIAM BARADEL LARI DESENHO ENG. CIVIL WILLIAM BARADEL LARI	
EMPREENDIMENTO REFORMA E AMPLIAÇÃO DA CEIM PROF. BENEDITA F. CANADAS			
ENDEREÇO RUA NILSON PEREIRA COSTA, 04 - BAIRRO JATOBA POUSO ALEGRE - MINAS GERAIS		DISCIPLINA ESTRUTURAL FASE DO PROJETO EXECUTIVO	
ASSUNTO PROJETO ESTRUTURAL EM CONCRETO ARMADO PLANTA DE DETALHAMENTO DAS FERRAGENS PILARES E VIGOTAS		FOLHA Nº. 03/09	
DATA INICIAL	ESCALA	REVISÃO	ARQUIVO
15/07/2020	INDICADA	ROO	DAC-PMPA-BEN-PE-EST-ROO.DWG