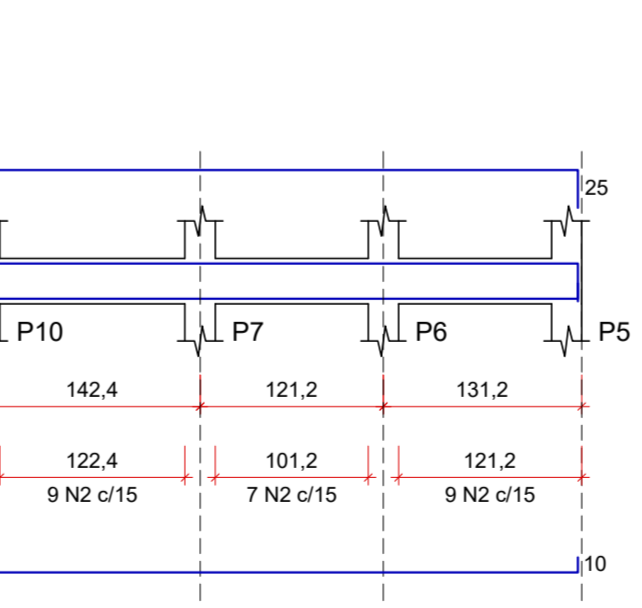
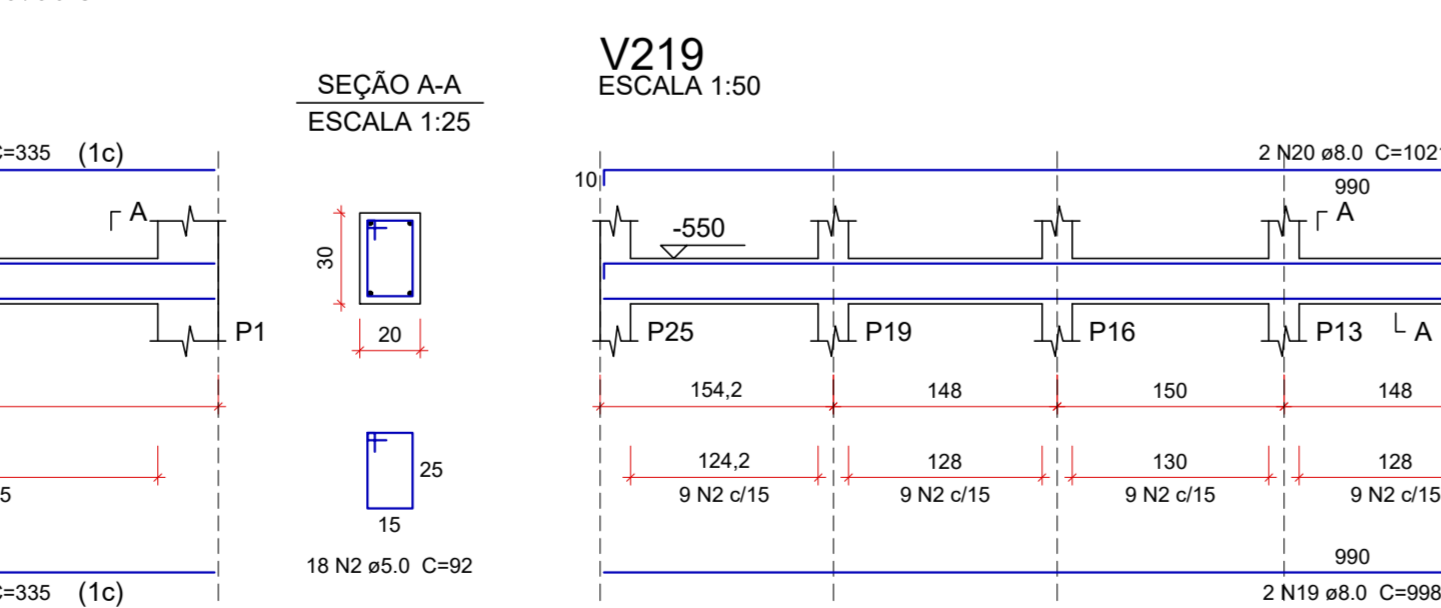
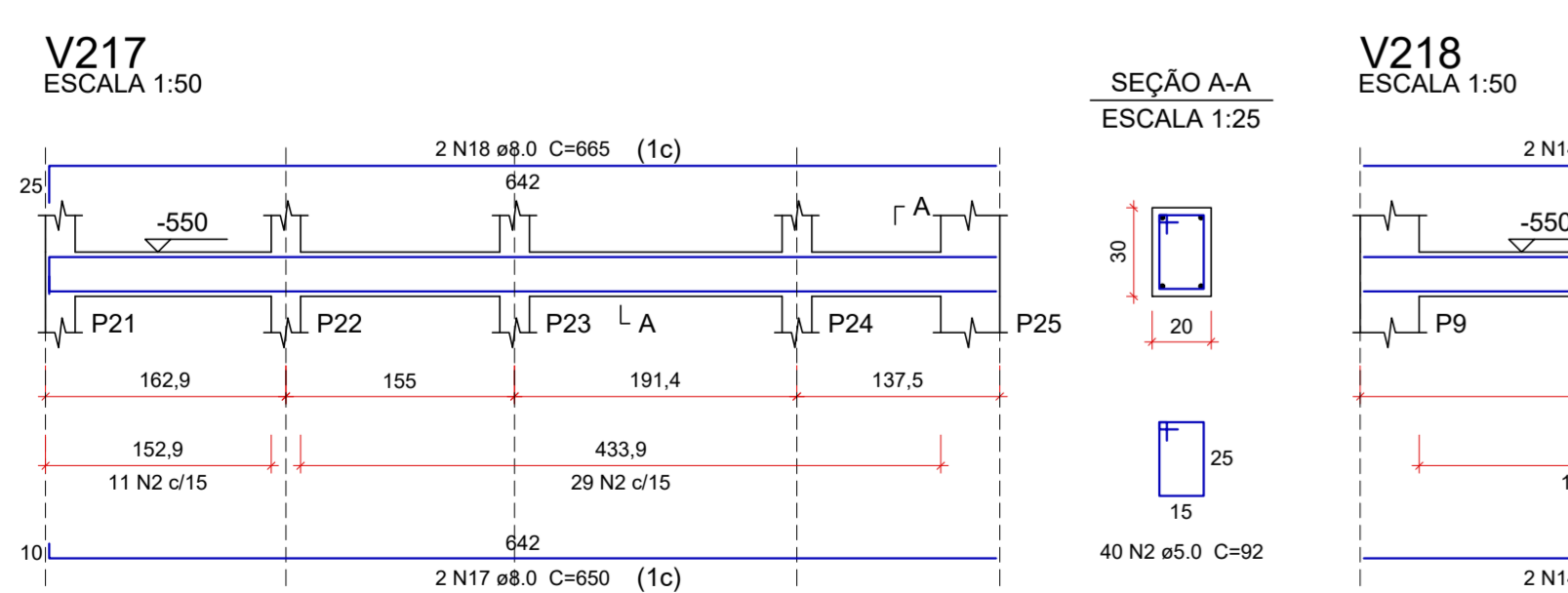
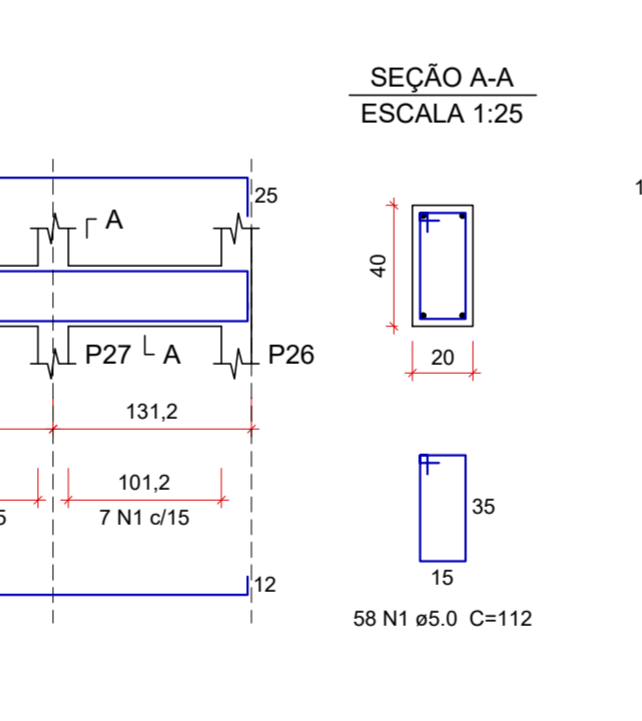
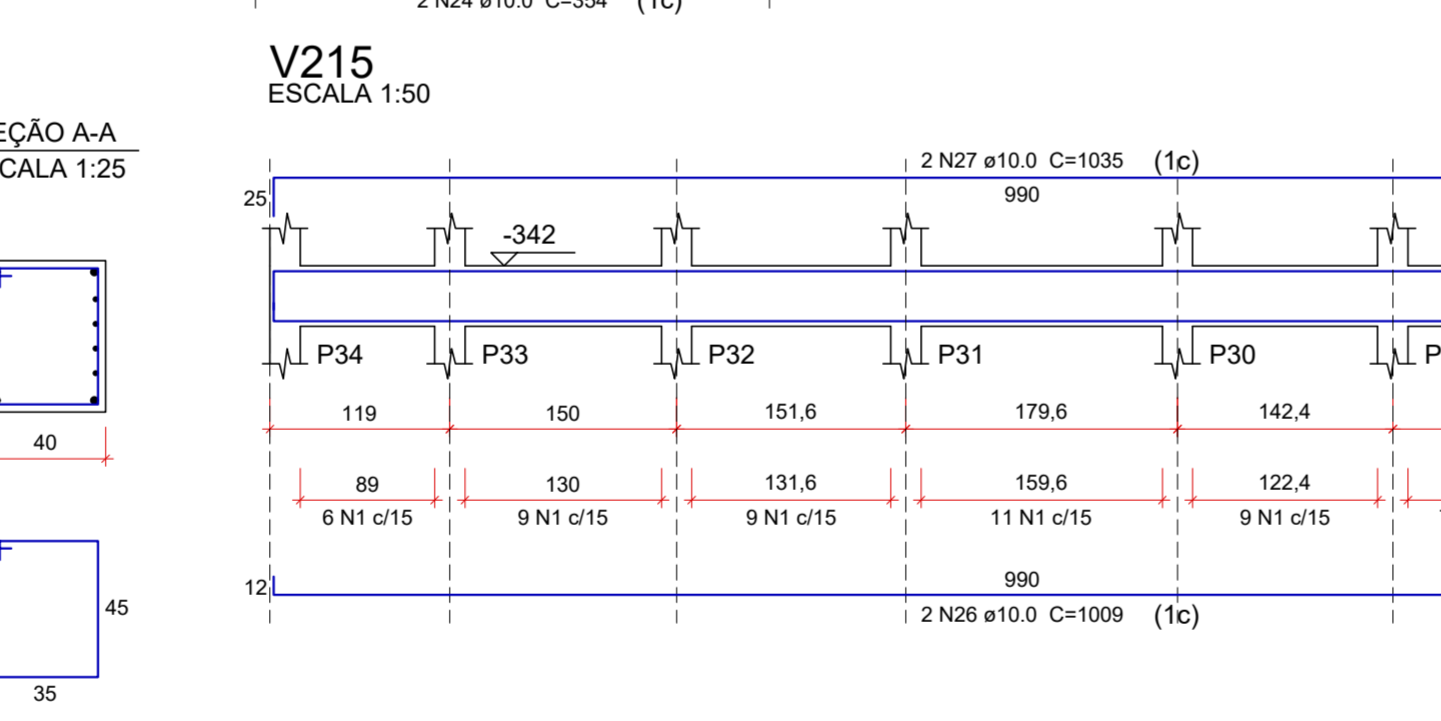
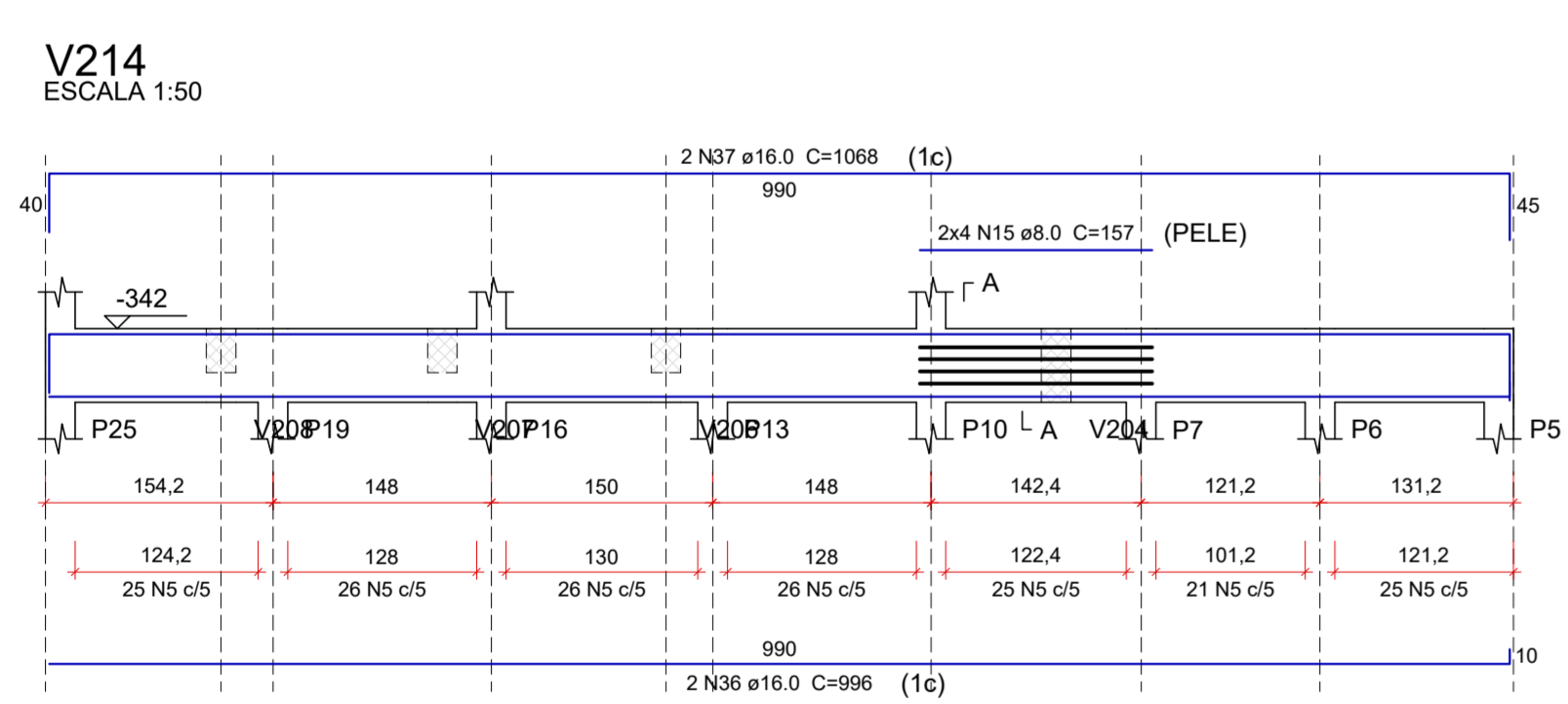
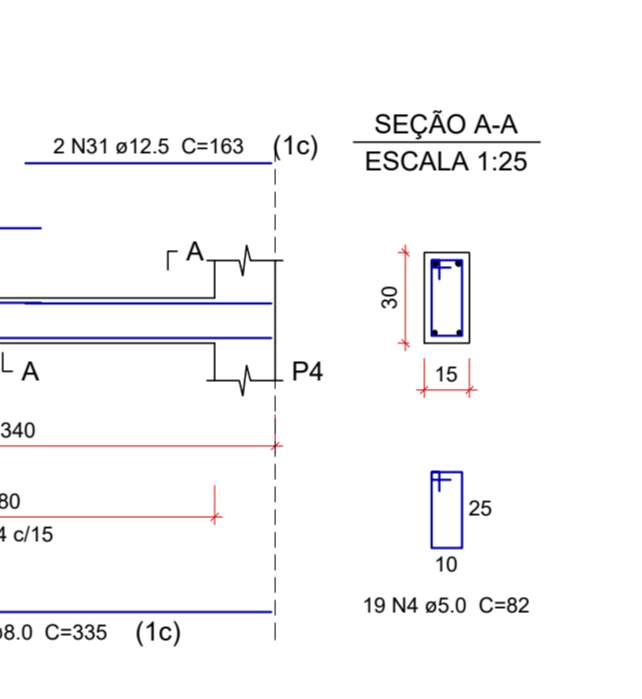
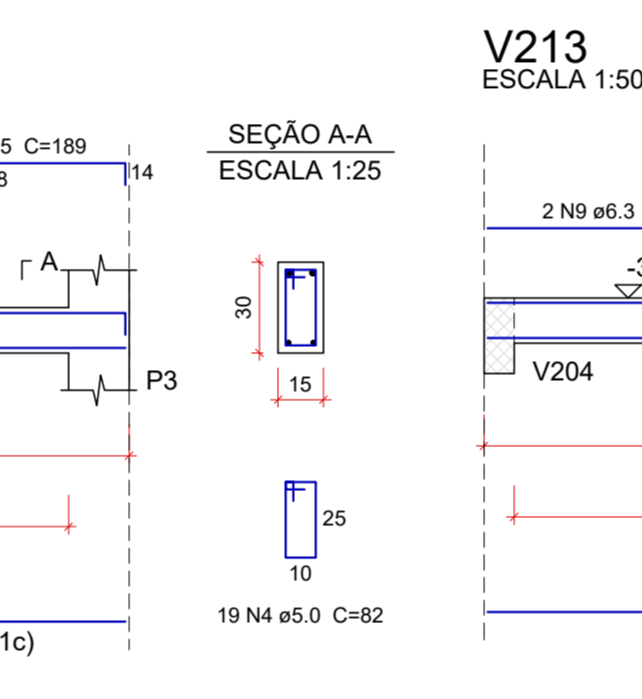
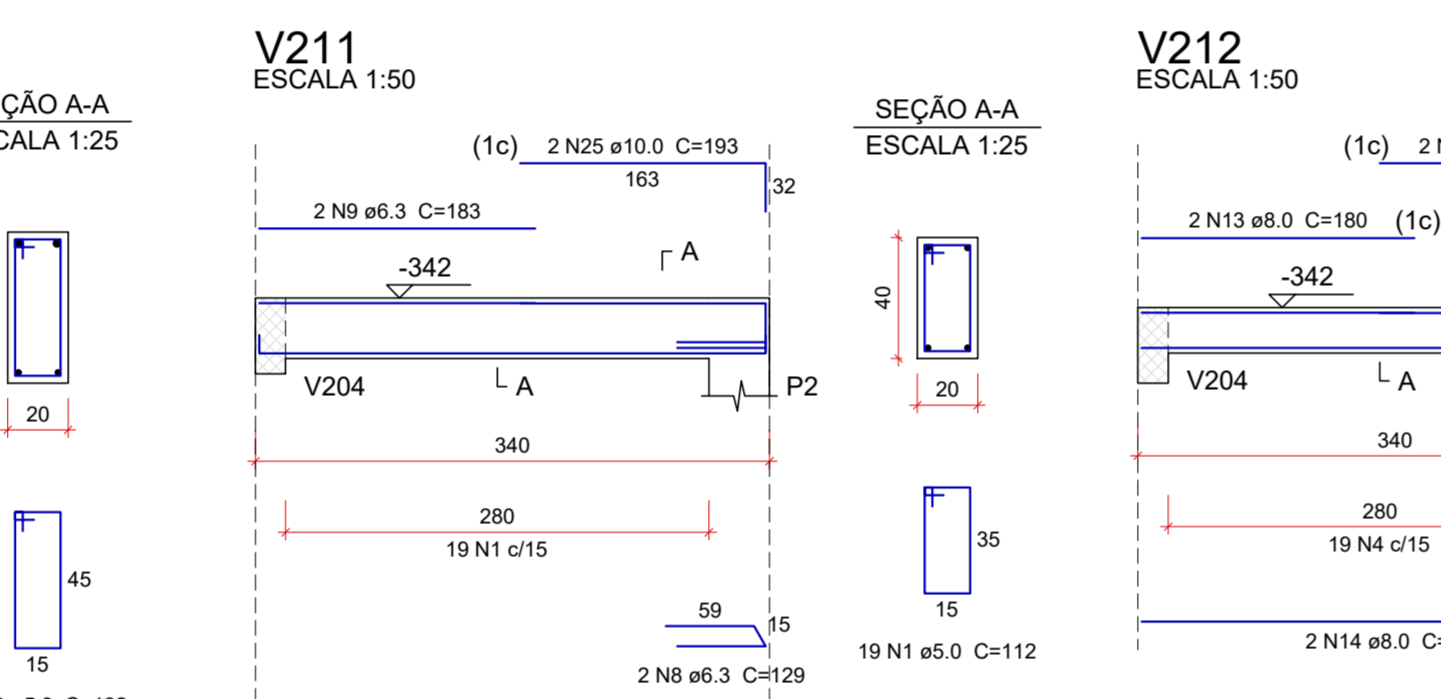
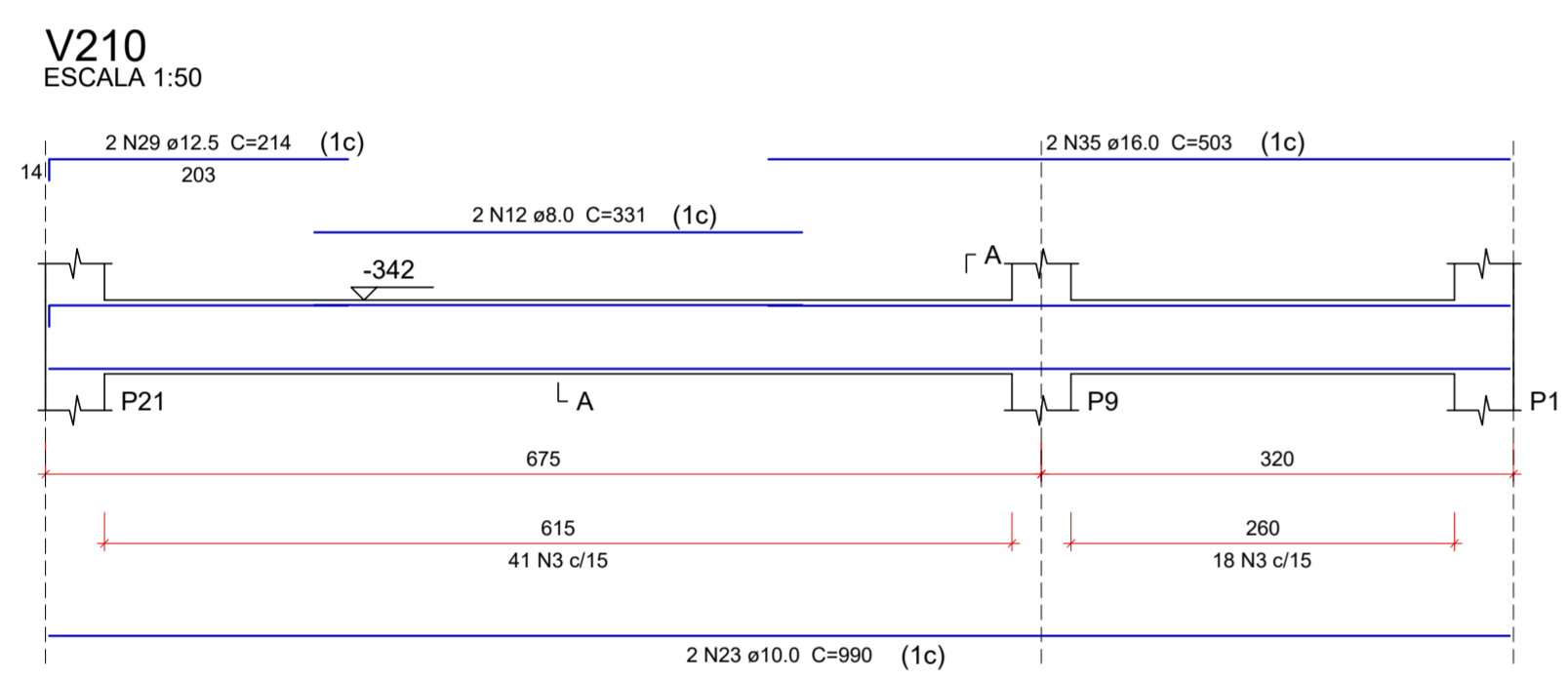
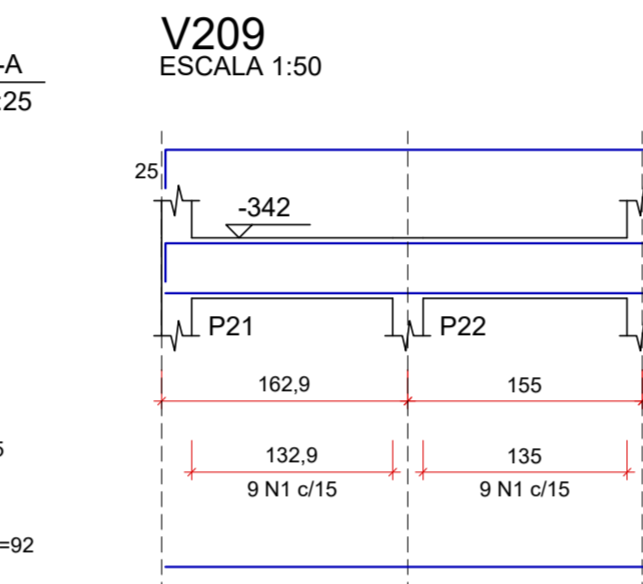
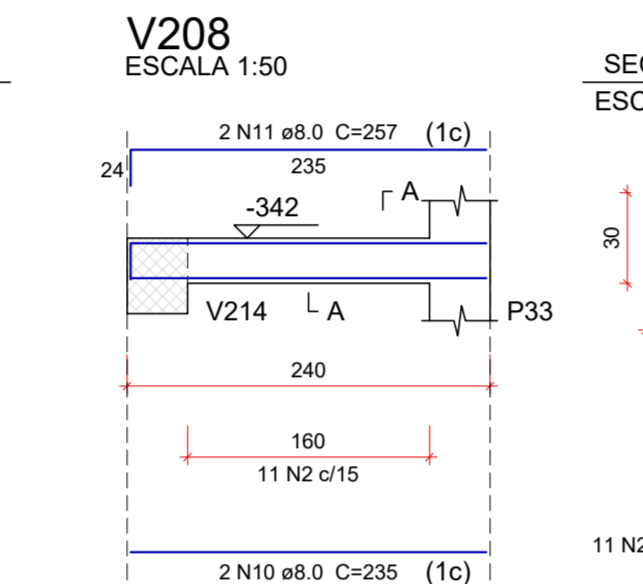
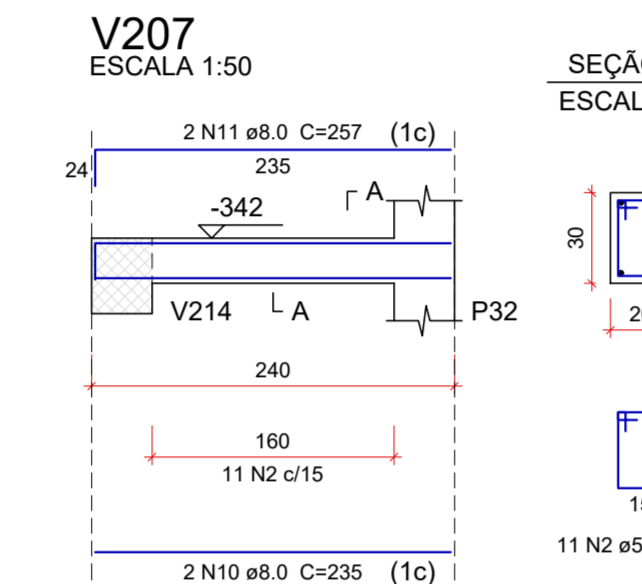
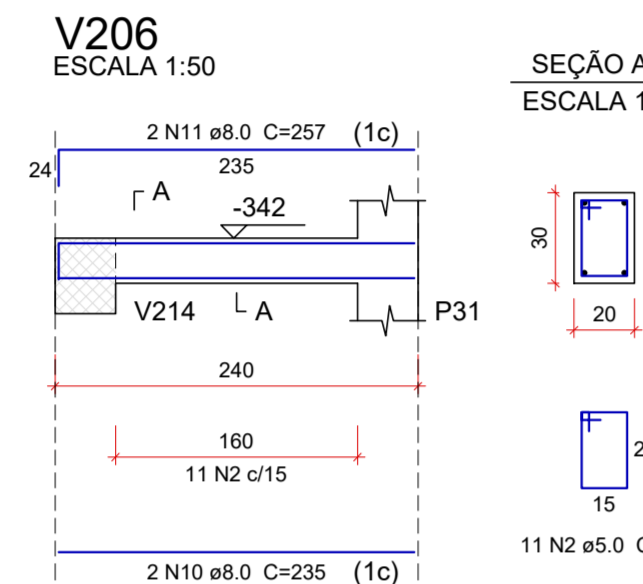
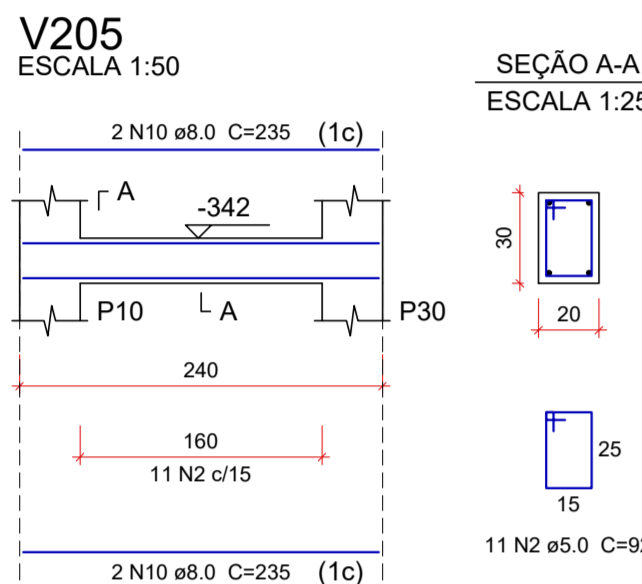


Relação do aço

V201	V202	V203
V204	V205	V206
V207	V208	V209
V210	V211	V212
V213	V214	V215
V216	V217	V218

AÇO	N	DIAM (mm)	QUANT	C.UNIT (cm)	C.TOTAL (cm)
CA60	1	5.0	172	112	19264
	2	5.0	223	92	20516
	3	5.0	115	132	15180
	4	5.0	38	82	3116
	5	5.0	174	172	29928
CA50	6	6.3	2	282	564
	7	6.3	4	112	448
	8	6.3	2	129	258
	9	6.3	4	183	732
	10	8.0	14	235	3290
	11	8.0	10	257	2570
	12	8.0	2	331	662
	13	8.0	2	180	360
	14	8.0	8	335	2680
	15	8.0	8	157	1256
	16	8.0	2	642	1284
	17	8.0	4	650	2600
	18	8.0	2	665	1330
	19	8.0	2	998	1996
	20	8.0	2	1021	2042
	21	10.0	4	842	3368
	22	10.0	4	865	3460
	23	10.0	2	990	1980
	24	10.0	2	354	708
	25	10.0	2	193	386
	26	10.0	2	1009	2018
	27	10.0	2	1035	2070
	28	12.5	2	203	406
	29	12.5	2	214	428
	30	12.5	2	189	378
	31	12.5	2	163	326
	32	16.0	3	657	1971
	33	16.0	2	249	498
	34	16.0	4	116	464
	35	16.0	2	503	1006
	36	16.0	2	996	1992
	37	16.0	2	1068	2136



Resumo do aço

AÇO	DIAM (mm)	C.TOTAL (m)	PESO + 10% (kg)
CA50	6.3	20.1	5.4
	8.0	200.7	87.1
	10.0	139.9	94.9
	12.5	15.4	16.3
	16.0	80.7	140.1
CA60	5.0	880.1	149.2
PESO TOTAL (kg)			
CA50		343.7	
CA60		149.2	

Volume de concreto (C-30) = 7.32 m³
Área de forma = 101.56 m²

PROJETO: DAC engenharia Rua Miguel Vianna, nº 81, Sala 12 Bairro Morro Chic CEP: 37500-000 - Itajubá / MG Tel: (35) 3623-8646 www.dacengenharia.com.br	GERÊNCIA DE PROJETOS: IGR PAVIA LOPES COORDENAÇÃO DE PROJETOS: ENGº DENIS DE SOUZA SILVA RESPONSÁVEL TÉCNICO: ENGº CIVIL FLAVIA C. BARBOSA PROJETO: ENG. CIVIL WILLIAM BARADELARI DESENHO: ENG. CIVIL WILLIAM BARADELARI
EMPREENDIMENTO: SISTEMA DE BOMBAMENTO CONTRA ENCHENTES - DIQUINHA	
ENDEREÇO: RUA MARIA DIVINA SOARES - SÃO GERALDO POUSO ALEGRE - MINAS GERAIS	DISCIPLINA: ESTRUTURAL
ASSUNTO: PROJETO ESTRUTURAL EM CONCRETO ARMADO PROJETO ESTRUTURAL - DETALHAMENTO DA ARMAÇÃO VIGAS	
FASE DO PROJETO: EXECUTIVO	
FOLHA Nº: 13/19	
DATA INICIAL: 24/08/2022 ESCALA: INDICADA	REVISÃO: R00 ARQUIVO: DAC-PMPA-BDO-PE-EST-R00.DWG