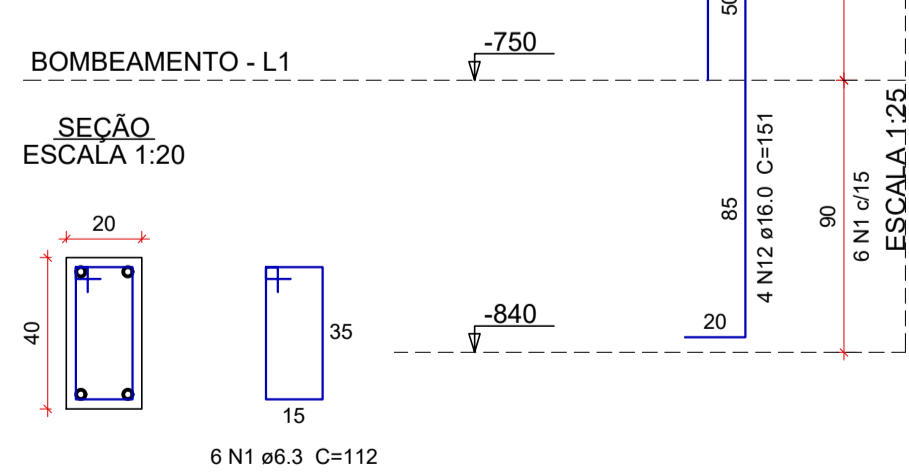
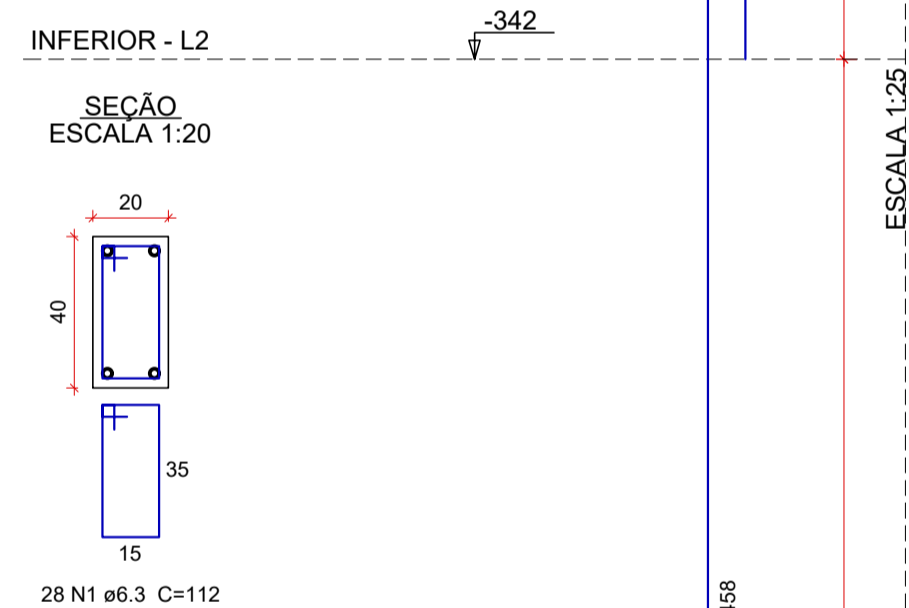
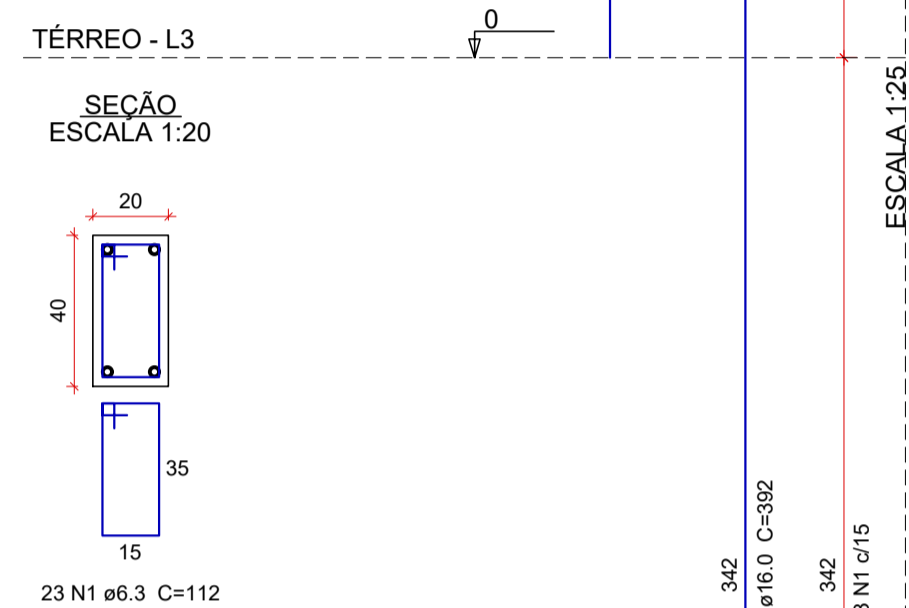
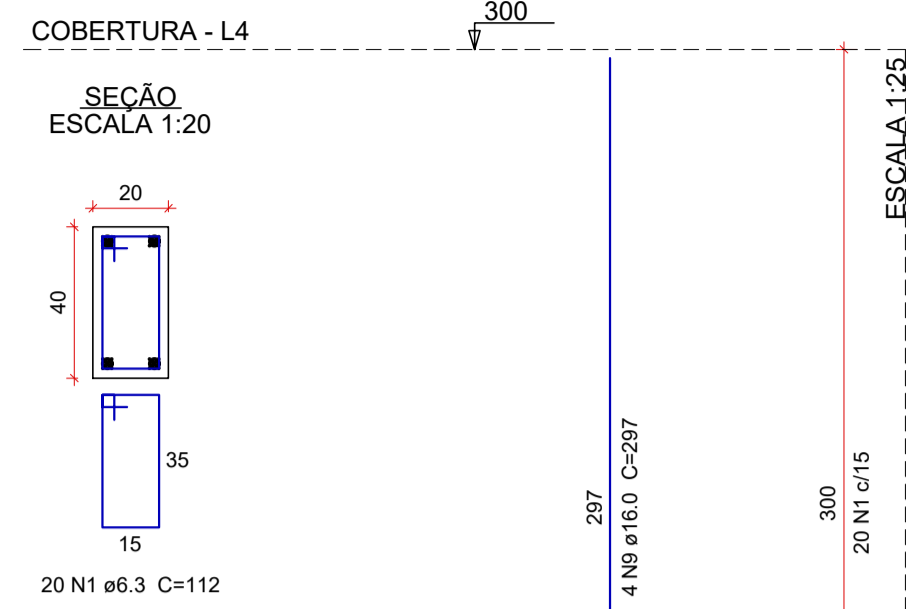
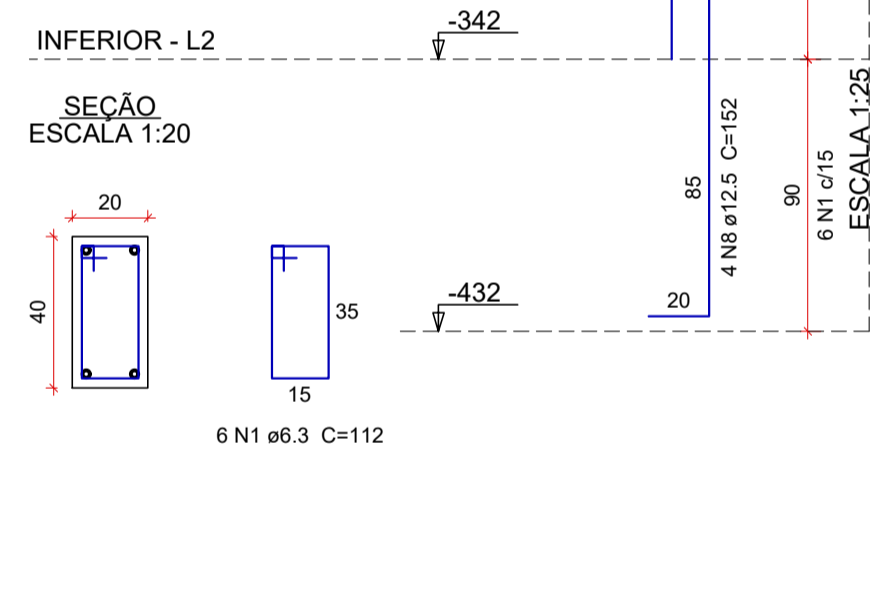
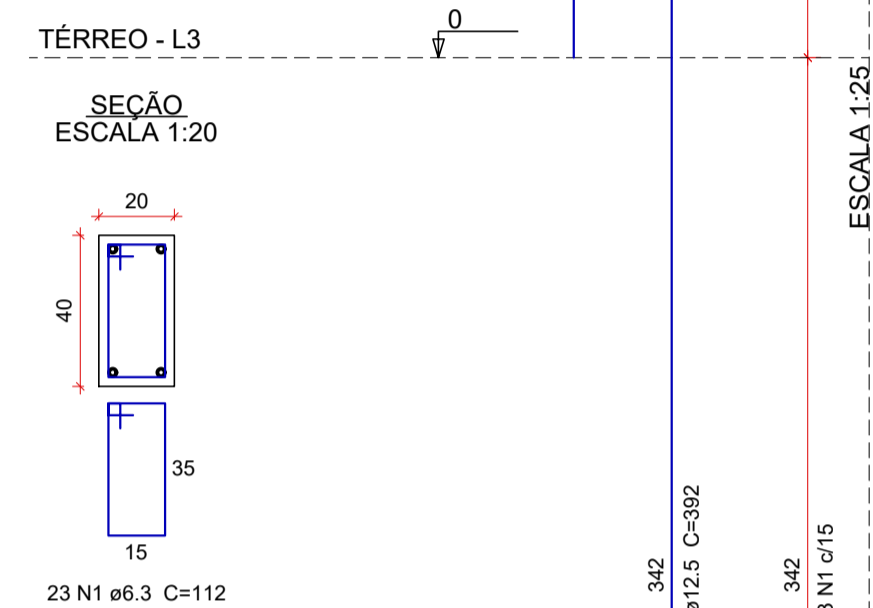
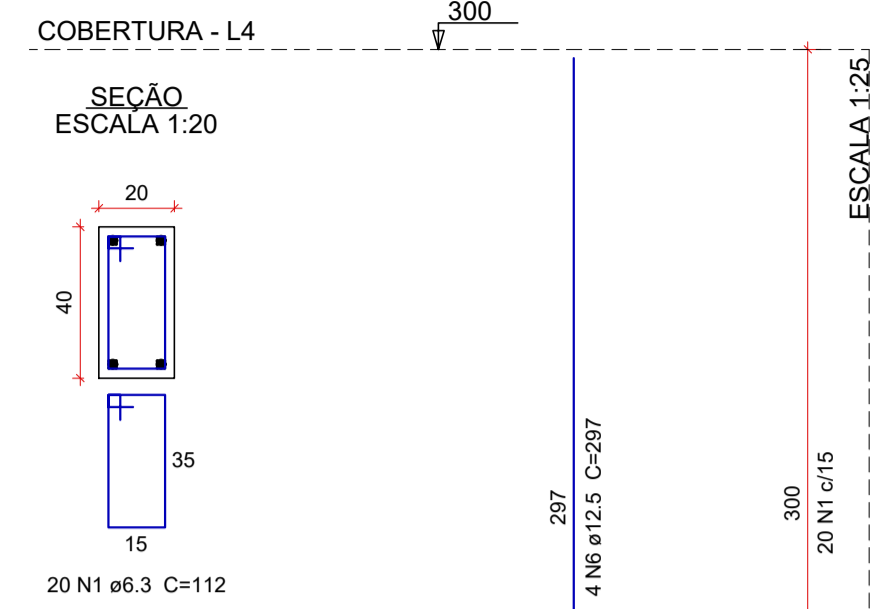


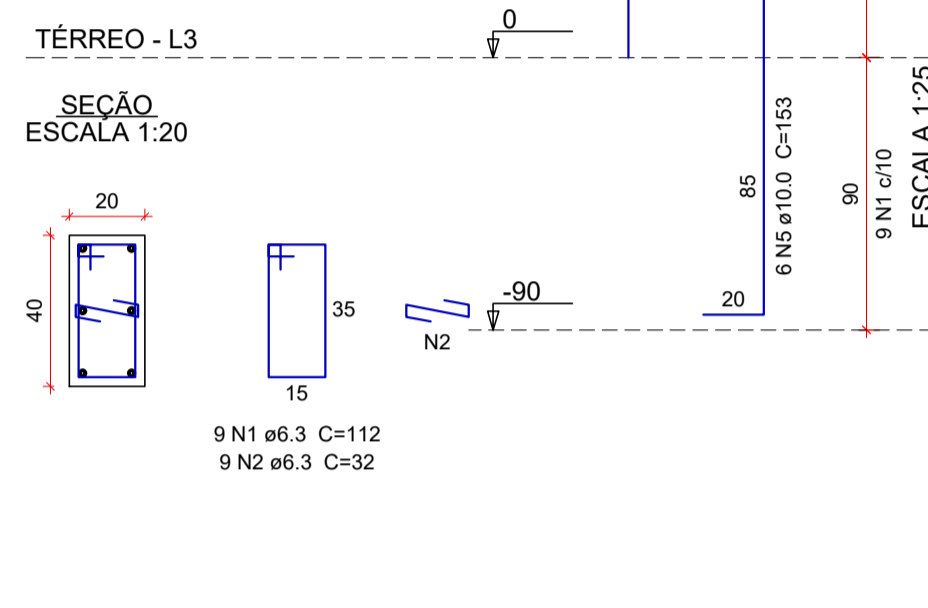
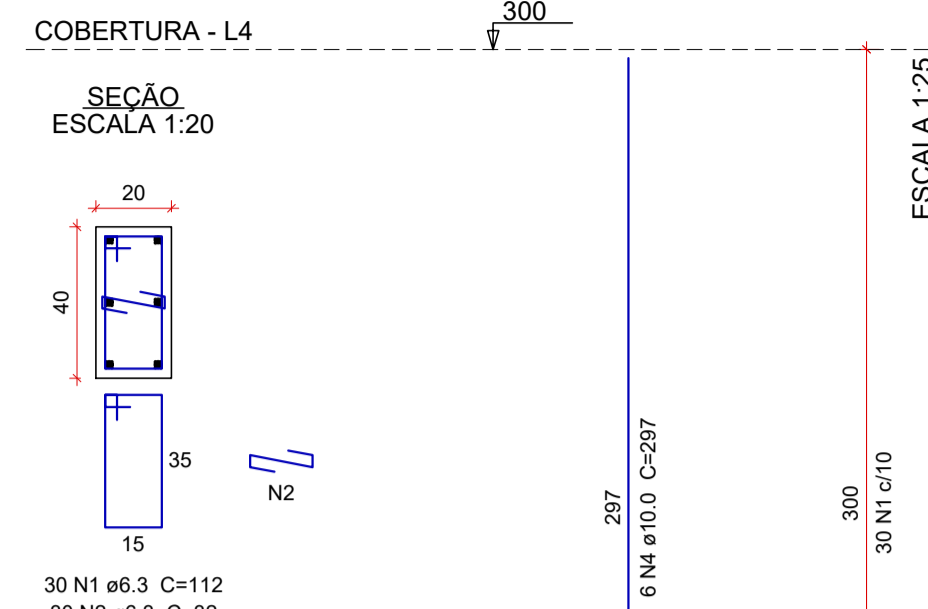
P24



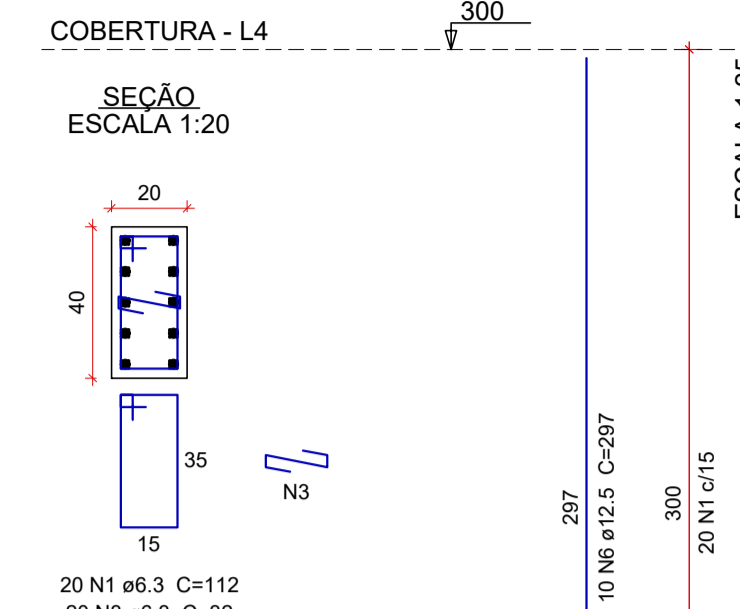
P26



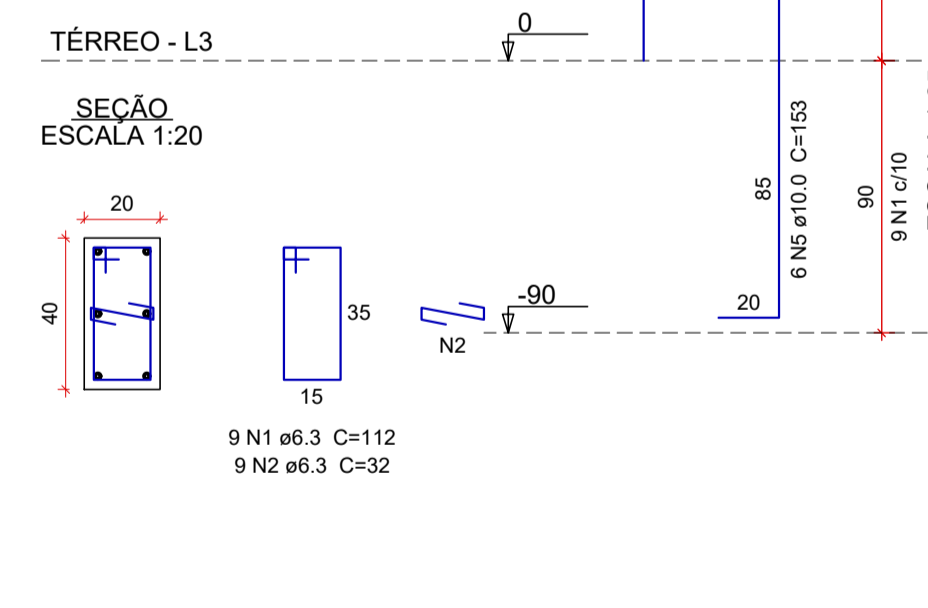
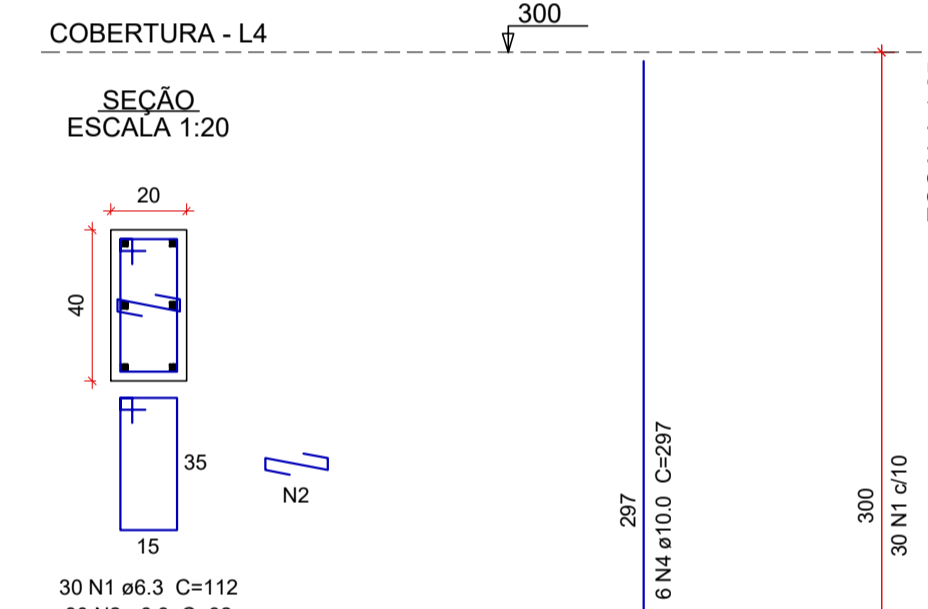
P35



P36



P37



Relação do aço

CA50	N	DIAM (mm)	QUANT	C.UNIT (cm)	C.TOTAL (cm)
CA50	1	6.3	224	112	25088
	2	6.3	78	32	2496
	3	6.3	20	32	640
	4	10.0	12	297	3564
	5	10.0	12	153	1836
	6	12.5	14	297	4158
	7	12.5	4	392	1568
	8	12.5	4	152	608
	9	16.0	4	297	1188
	10	16.0	4	392	1568
	11	16.0	4	458	1832
	12	16.0	4	151	604

Resumo do aço

AÇO	DIAM (mm)	C.TOTAL (m)	PESO + 10% (kg)
CA50	6.3	282.3	76
	10.0	54	36.6
	12.5	63.4	67.1
	16.0	52	90.1
PESO TOTAL (kg)			
CA50		269.9	

Volume de concreto (C-30) = 2.2 m³
Área de forma = 35.42 m²

REV. 00	24/08/22	EMISSÃO INICIAL	DAC
REVISÃO	DATA	DESCRIÇÃO	RESP.



DAC Engenharia

Rua Miguel Vianna, nº 81, Sala 12
Bairro Morro Chic
CEP: 37500-080 - Itajubá / MG
Tel: (35) 3623-8846
www.dacengenharia.com.br

GERÊNCIA DE PROJETOS: IGOR PAIVA LOPES (ENGRº HÍDRICO)
COORDENAÇÃO DE PROJETOS: ENGRº DENIS DE SOUZA SILVA (CREA-MG-127.216/D)
RESPONSÁVEL TÉCNICO: ENGRº CIVIL FLÁVIA C. BARBOSA (CREA-MG-187.842/D)
PROJETO: ENGRº CIVIL WILLIAM BARADEL LARI
DESENHO: ENGRº CIVIL WILLIAM BARADEL LARI

EMPREENDIMENTO: SISTEMA DE BOMBEAMENTO CONTRA ENCHENTES - DIQUINHA

ENDEREÇO: RUA MARIA DIVINA SOARES - SÃO GERALDO, POUSO ALEGRE - MINAS GERAIS

DISCIPLINA: ESTRUTURAL

FASE DO PROJETO: EXECUTIVO

ASSUNTO: PROJETO ESTRUTURAL EM CONCRETO ARMADO, PROJETO ESTRUTURAL - DETALHAMENTO DA ARMAÇÃO PILARES

FOLHA Nº: 10/19

DATA INICIAL: 24/08/2022 | ESCALA: INDICADA | REVISÃO: R00 | ARQUIVO: DAC-FMPA-BDQ-PE-EST-R00.DWG