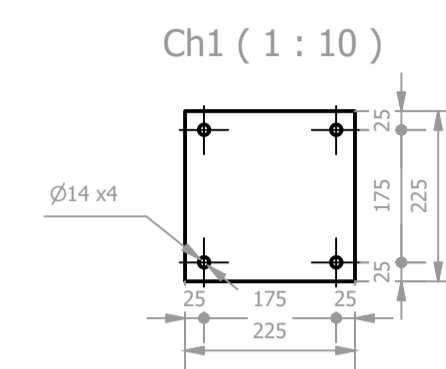
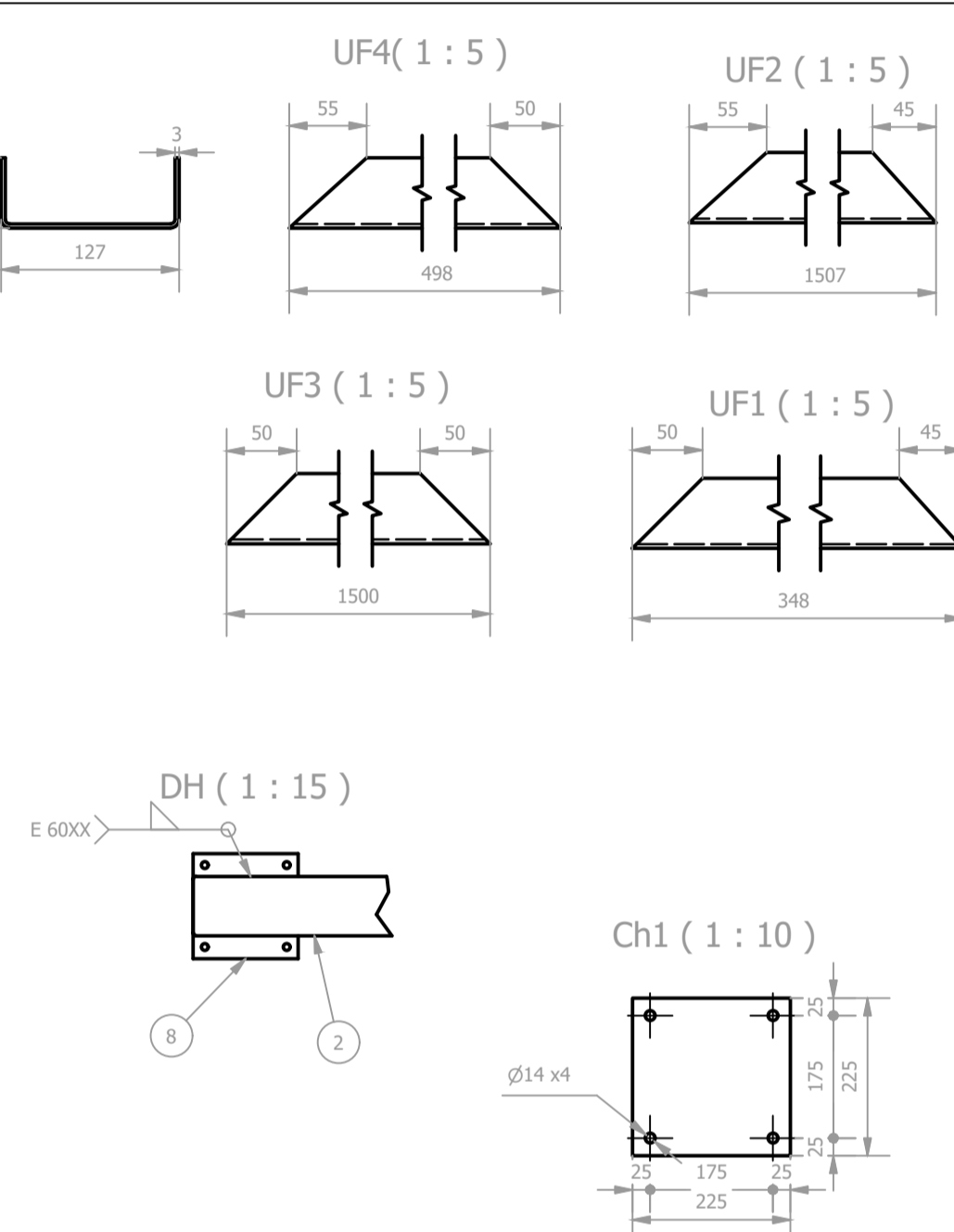
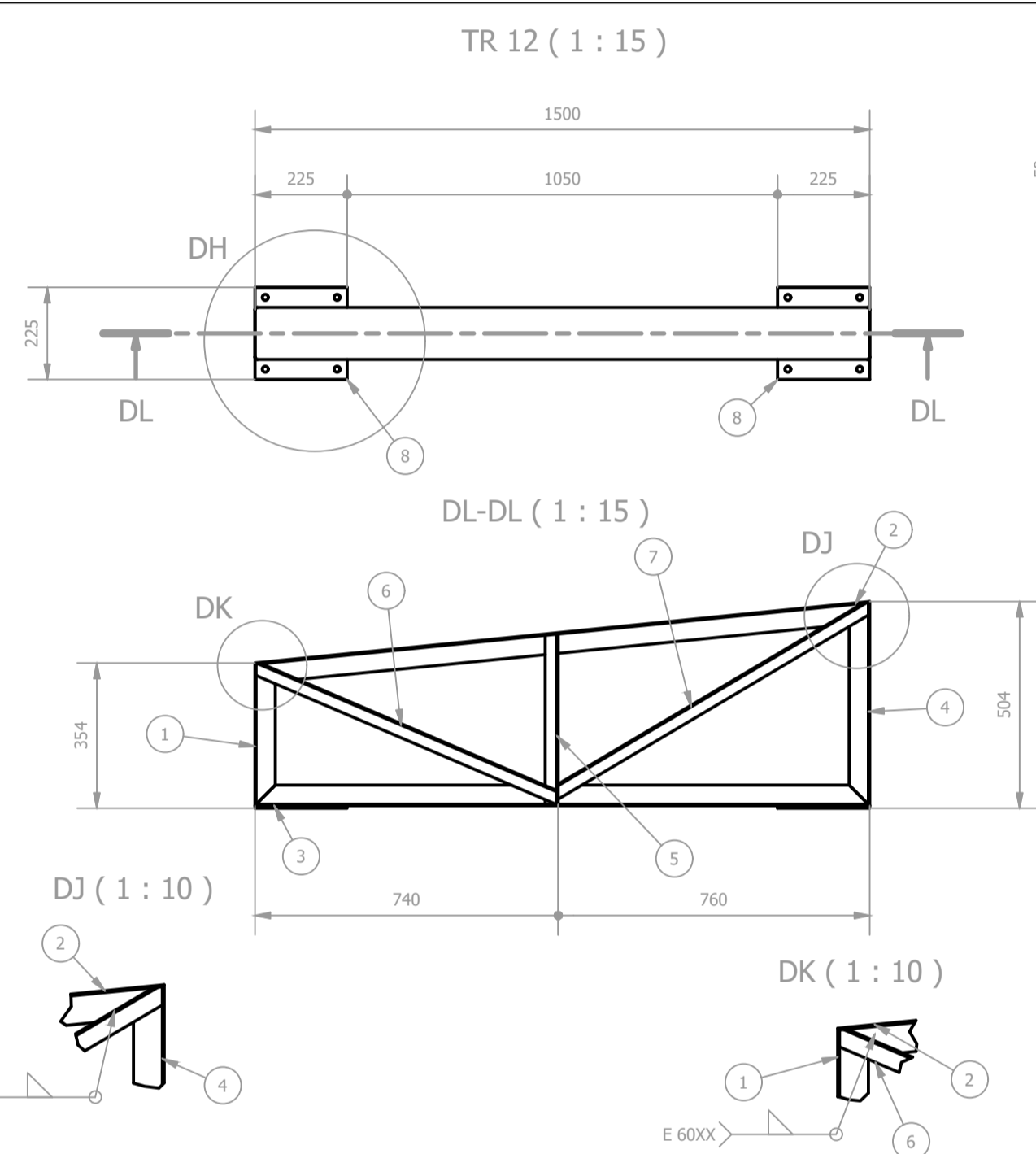
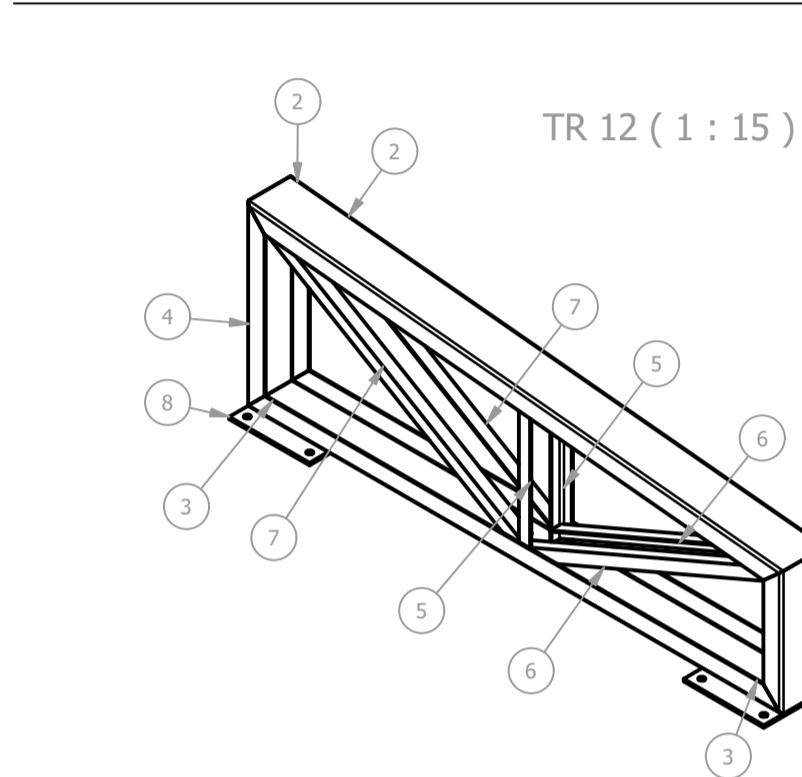


ID	ITEM	QTD	DESCRIÇÃO	COMPRI.	MATERIAL	PESO UN.
1	UF1	1	UF 127 x50 x3	347	ASTM A36	1,7 kg
2	UF2	1	UF 127 x50 x3	4452	ASTM A36	22,6 kg
3	UF3	1	UF 127 x50 x3	4430	ASTM A36	22,5 kg
4	UF4	1	UF 127 x50 x3	790	ASTM A36	3,9 kg
5	L1	2	L 1.1.4 x 1.8	415	ASTM A36	0,7 kg
6	L2	2	L 1.1.4 x 1.8	485	ASTM A36	0,8 kg
7	L3	2	L 1.1.4 x 1.8	555	ASTM A36	0,9 kg
8	L4	2	L 1.1.4 x 1.8	648	ASTM A36	1,0 kg
9	L5	2	L 1.1.4 x 1.8	741	ASTM A36	1,2 kg
10	L7	2	L 1.1.4 x 1.8	883	ASTM A36	1,3 kg
11	L10	2	L 1.1.4 x 1.8	1164	ASTM A36	1,7 kg
12	L6	2	L 1.1.4 x 1.8	855	ASTM A36	1,2 kg
13	L8	2	L 1.1.4 x 1.8	898	ASTM A36	1,3 kg
14	L9	2	L 1.1.4 x 1.8	918	ASTM A36	1,3 kg
15	L11	2	L 1.1.4 x 1.8	1178	ASTM A36	1,7 kg
16	Ch1	3	6,3 x 225 x 225		ASTM A36	2,5 kg

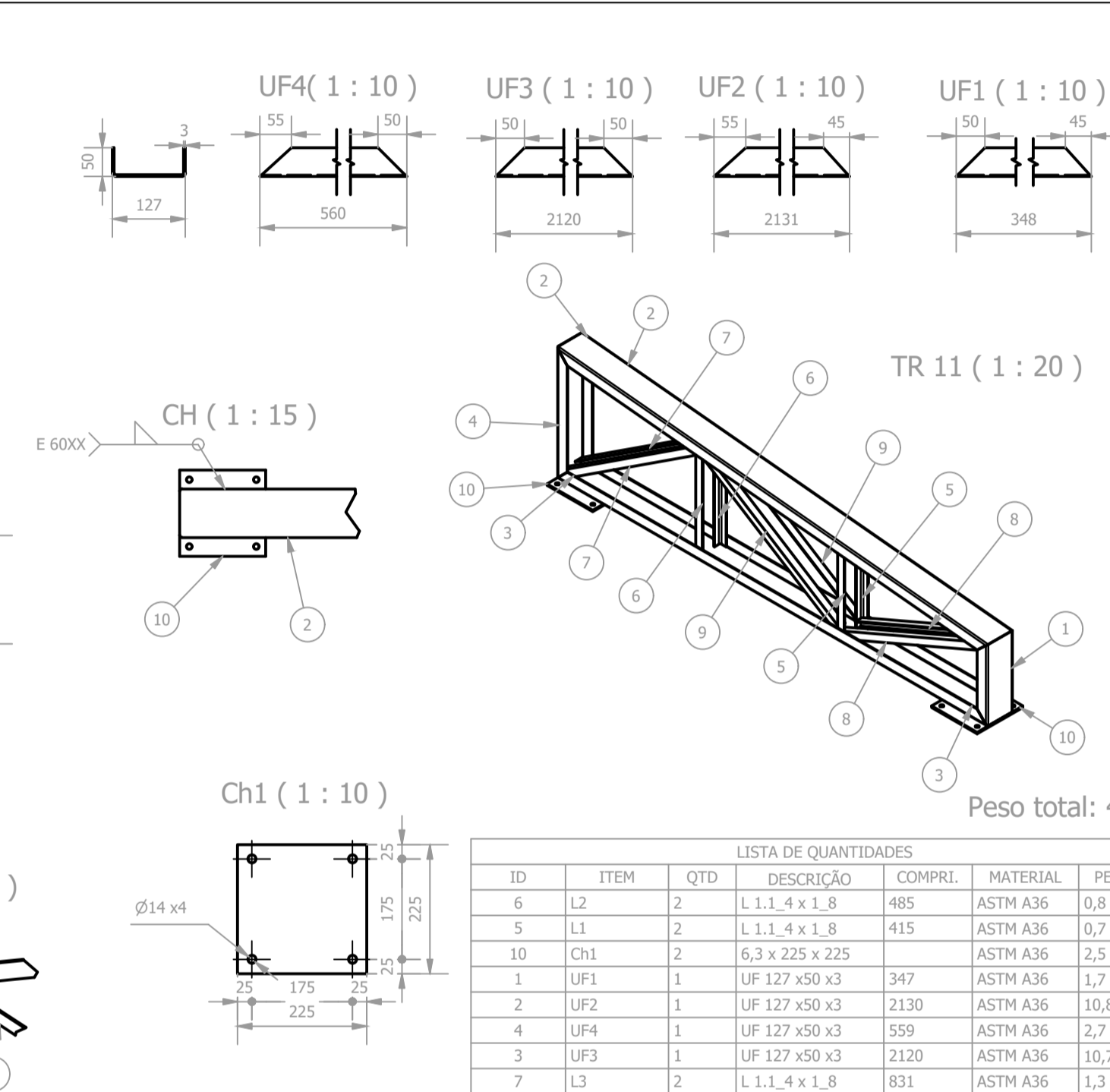
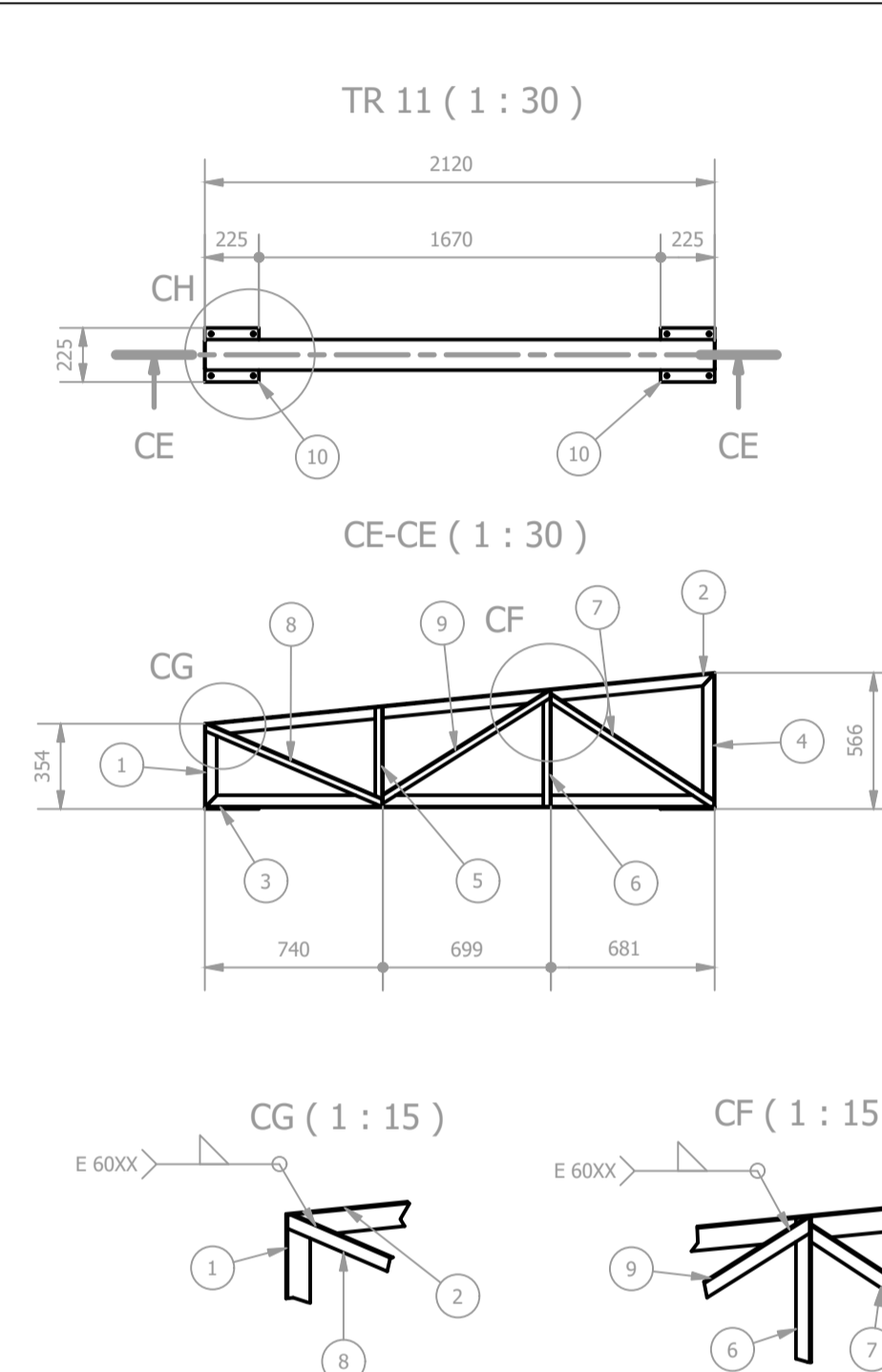


Peso total: 84 kg



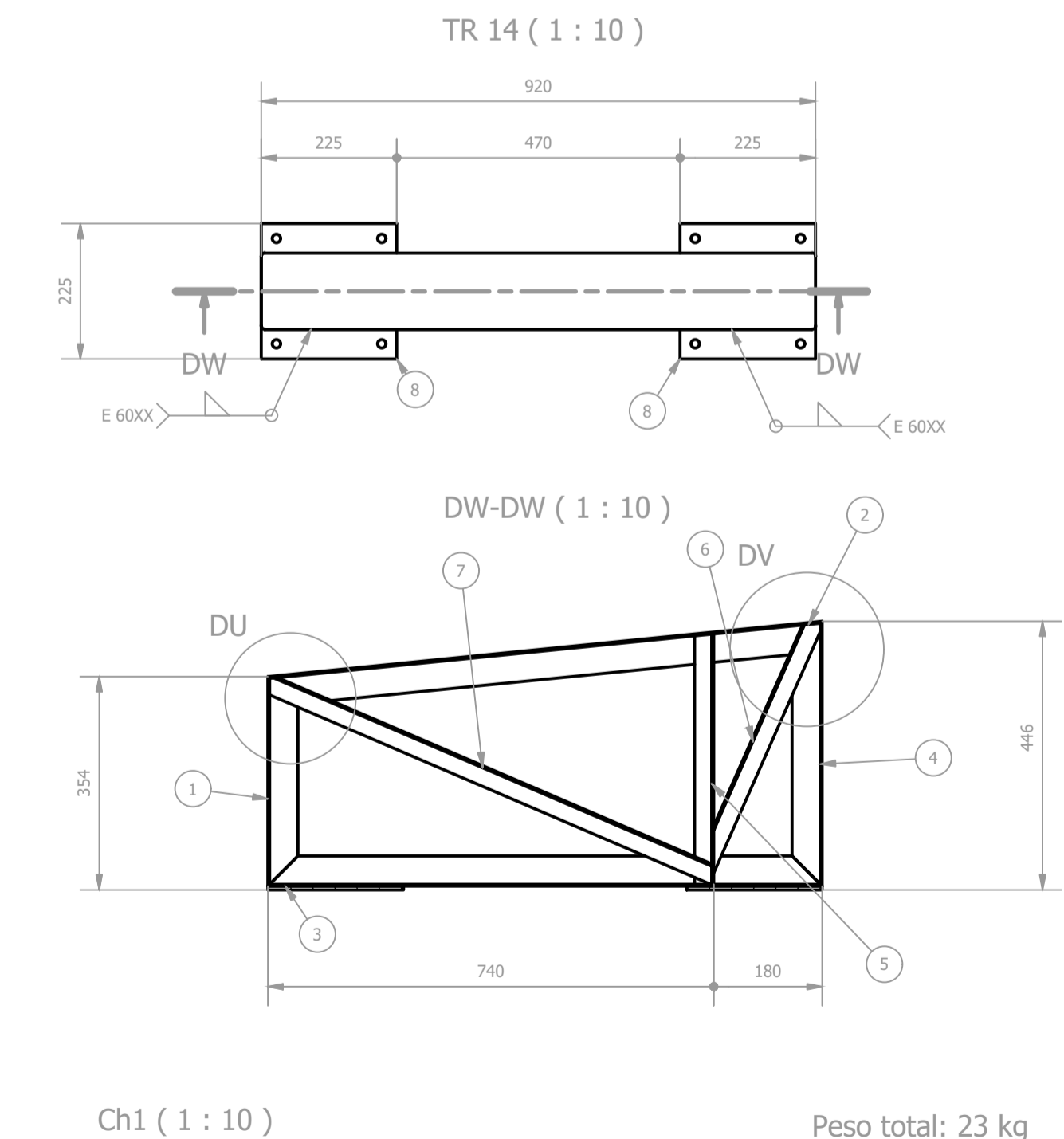
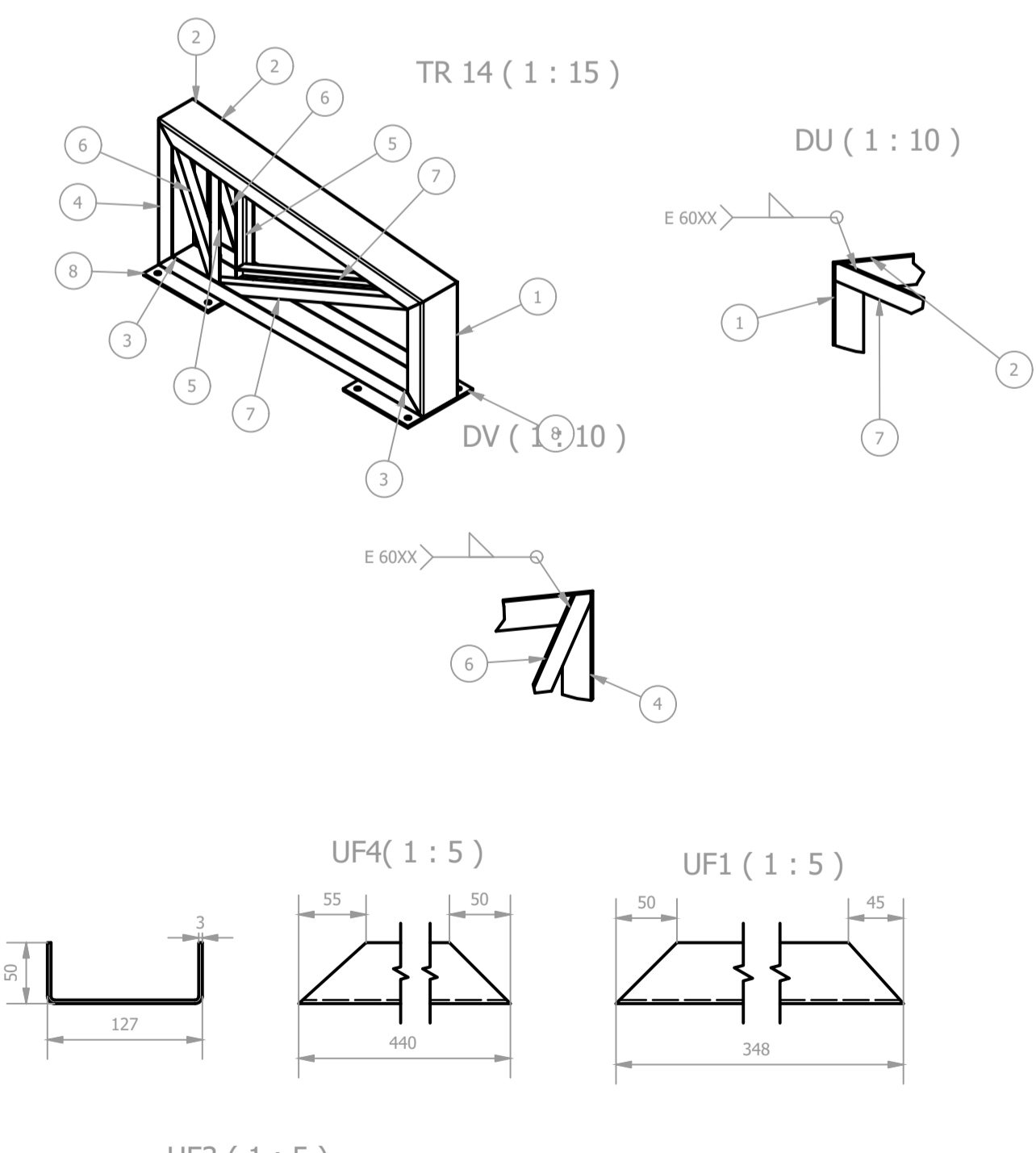
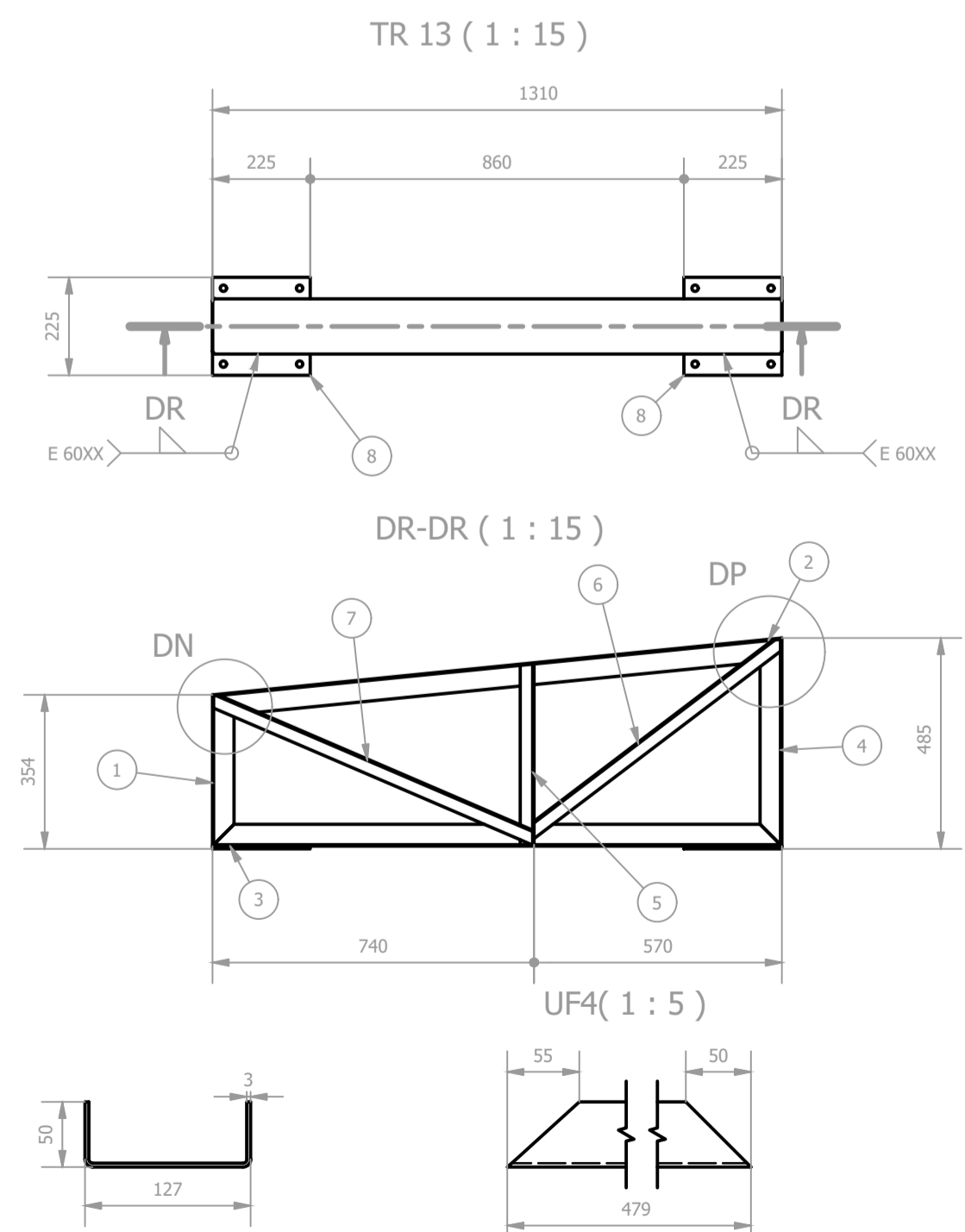
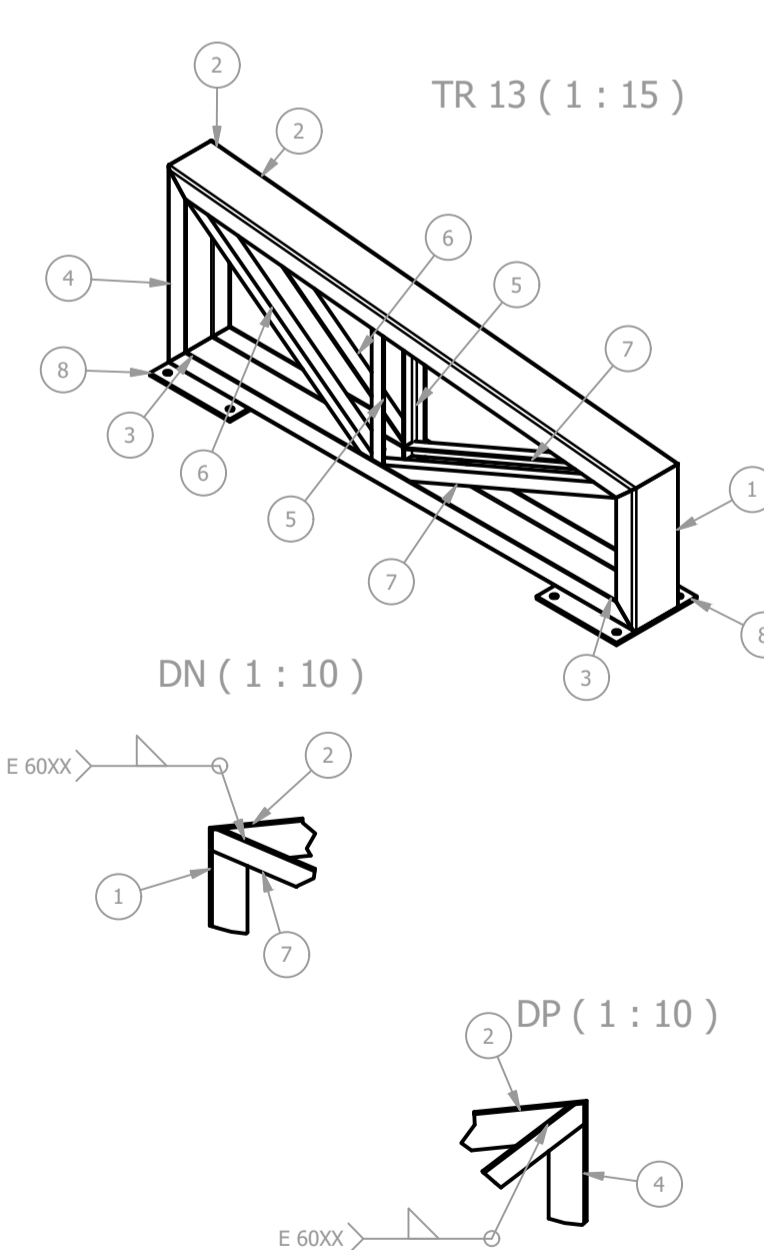
Peso total: 31 kg

ID	ITEM	QTD	DESCRIÇÃO	COMPRI.	MATERIAL	PESO UN.
5	L1	2	L 1.1.4 x 1.8	415	ASTM A36	0,7 kg
8	Ch1	2	6,3 x 225 x 225		ASTM A36	2,5 kg
1	UF1	1	UF 127 x50 x3	347	ASTM A36	1,7 kg
2	UF2	1	UF 127 x50 x3	1507	ASTM A36	7,6 kg
4	UF4	1	UF 127 x50 x3	497	ASTM A36	2,4 kg
3	UF3	1	UF 127 x50 x3	1500	ASTM A36	7,5 kg
6	L2	2	L 1.1.4 x 1.8	855	ASTM A36	1,2 kg
7	L3	2	L 1.1.4 x 1.8	898	ASTM A36	1,4 kg



Peso total: 41 kg

ID	ITEM	QTD	DESCRIÇÃO	COMPRI.	MATERIAL	PESO UN.
6	L2	2	L 1.1.4 x 1.8	485	ASTM A36	0,8 kg
5	L1	2	L 1.1.4 x 1.8	415	ASTM A36	0,7 kg
10	Ch1	2	6,3 x 225 x 225		ASTM A36	2,5 kg
1	UF1	1	UF 127 x50 x3	347	ASTM A36	1,7 kg
2	UF2	1	UF 127 x50 x3	2130	ASTM A36	10,8 kg
4	UF4	1	UF 127 x50 x3	559	ASTM A36	2,7 kg
3	UF3	1	UF 127 x50 x3	2120	ASTM A36	10,7 kg
7	L3	2	L 1.1.4 x 1.8	831	ASTM A36	1,3 kg
8	L4	2	L 1.1.4 x 1.8	855	ASTM A36	1,2 kg
9	L5	2	L 1.1.4 x 1.8	898	ASTM A36	1,3 kg



Peso total: 28 kg

ID	ITEM	QTD	DESCRIÇÃO	COMPRI.	MATERIAL	PESO UN.
5	L1	2	L 1.1.4 x 1.8	415	ASTM A36	0,7 kg
8	Ch1	2	6,3 x 225 x 225		ASTM A36	2,5 kg
1	UF1	1	UF 127 x50 x3	347	ASTM A36	1,7 kg
2	UF2	1	UF 127 x50 x3	1316	ASTM A36	6,6 kg
4	UF4	1	UF 127 x50 x3	478	ASTM A36	2,3 kg
3	UF3	1	UF 127 x50 x3	1310	ASTM A36	6,6 kg
6	L2	2	L 1.1.4 x 1.8	736	ASTM A36	1,1 kg
7	L3	2	L 1.1.4 x 1.8	855	ASTM A36	1,2 kg

ID	ITEM	QTD	DESCRIÇÃO	COMPRI.	MATERIAL	PESO UN.
5	L1	2	L 1.1.4 x 1.8	415	ASTM A36	0,7 kg
8	Ch1	2	6,3 x 225 x 225		ASTM A36	2,5 kg
1	UF1	1	UF 127 x50 x3	347	ASTM A36	1,7 kg
2	UF2	1	UF 127 x50 x3	924	ASTM A36	4,6 kg
4	UF4	1	UF 127 x50 x3	439	ASTM A36	2,1 kg
3	UF3	1	UF 127 x50 x3	920	ASTM A36	4,6 kg
6	L2	2	L 1.1.4 x 1.8	510	ASTM A36	0,6 kg
7	L3	2	L 1.1.4 x 1.8	855	ASTM A36	1,2 kg

Peso total: 23 kg

<p>Prefeitura Municipal de Pouso Alegre</p>	
<p>PROJETO</p> <p>DAC Engenharia</p> <p>Rua Miguel Vianna, nº 81, Sala 12 Bairro Morro Chic CEP: 37500-080 - Itajubá / MG Tel: (35) 3623-5720 www.dacengenharia.com.br</p>	<p>GERÊNCIA DE PROJETOS DENIS DE SOUZA SILVA CREA: MG-127.216/D</p> <p>COORDENAÇÃO DE PROJETOS ALOISIO CAETANO FERREIRA CREA: MG-97.132/D</p> <p>RESPONSÁVEL TÉCNICO GERMAN LOZANO CREA: SP-508193164/D</p> <p>DESENHO GERMAN LOZANO</p>
<p>EMPREENDIMENTO</p> <p>UBS PÃO DE AÇÚCAR</p>	
<p>ENDEREÇO</p> <p>RUA APARECIDA CURIEL, S/N, PÃO DE AÇÚCAR POUSO ALEGRE - MINAS GERAIS</p>	<p>DISCIPLINA</p> <p>METÁLICA</p> <p>FASE DO PROJETO</p> <p>EXECUTIVO</p> <p>FOLHA Nº.</p> <p>05/05</p>
<p>DATA INICIAL</p> <p>03/09/2021</p>	<p>ESCALA</p> <p>INDICADA</p>
<p>REVISÃO</p> <p>ROO</p>	<p>ARQUIVO</p> <p>DAC-PMPA-AÇUCAR-PE-MET-05-ROO.DWG</p>