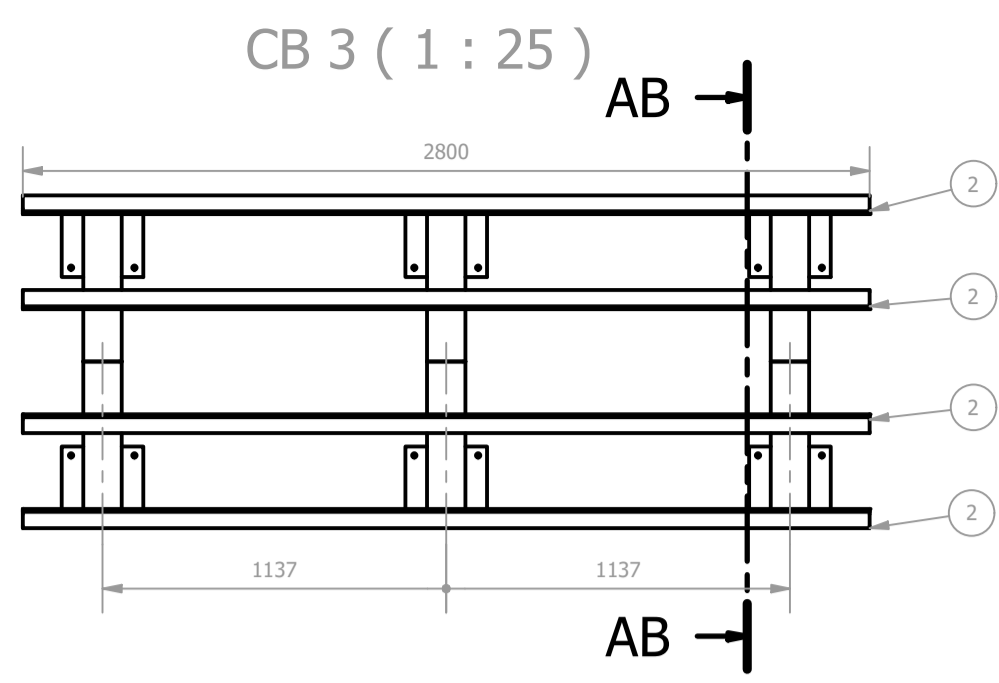
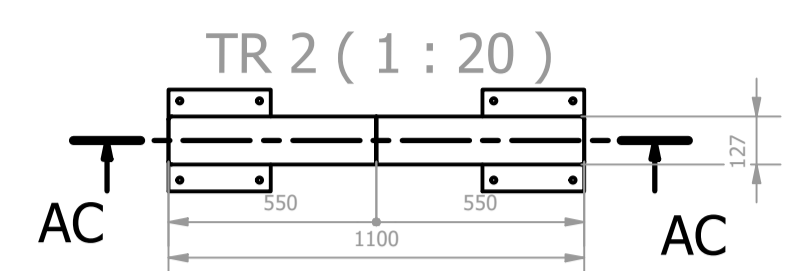
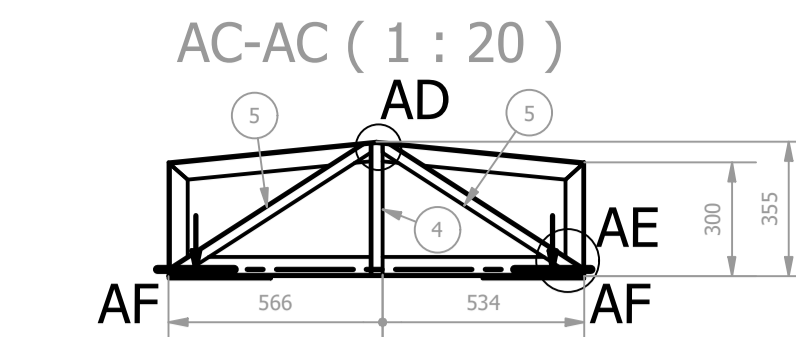
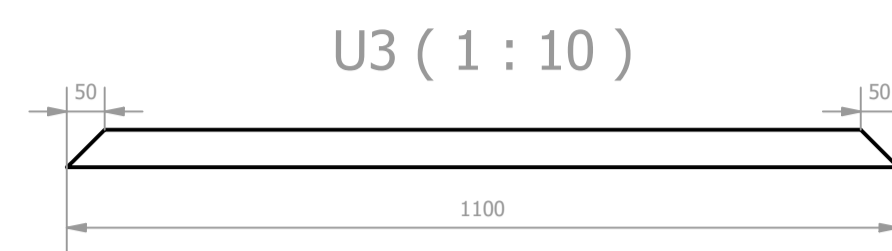
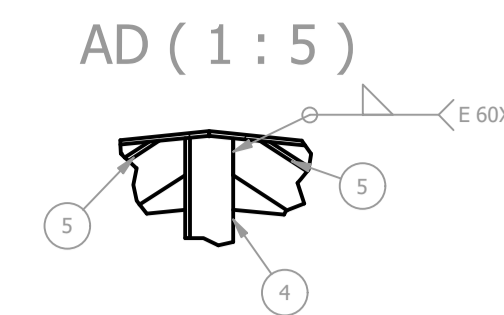
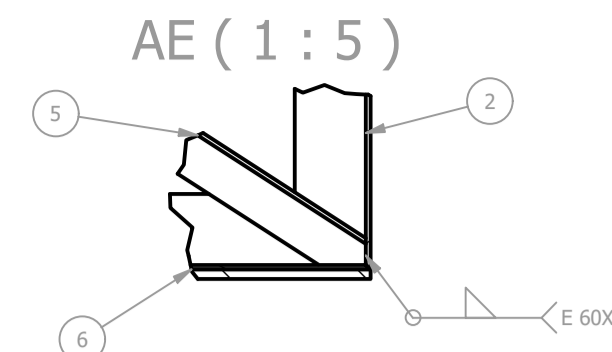
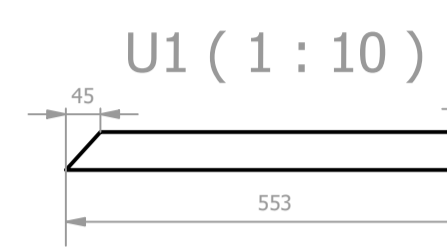
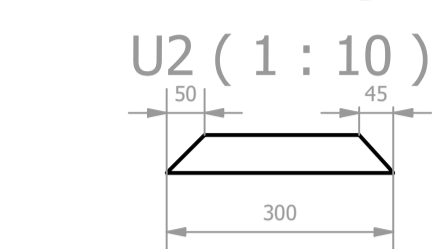
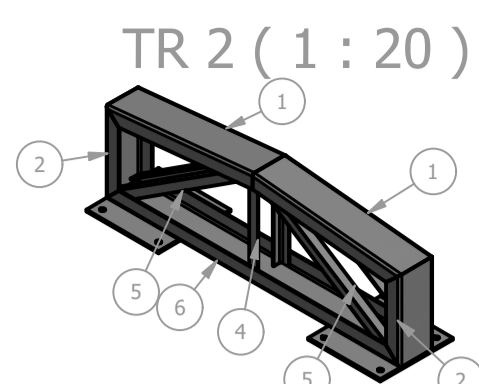
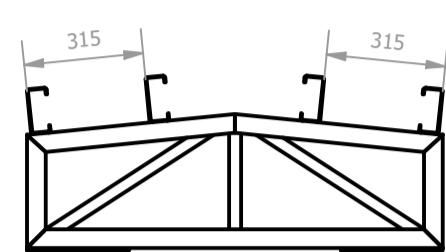


PESO SEM TELHAS: 142 Kg

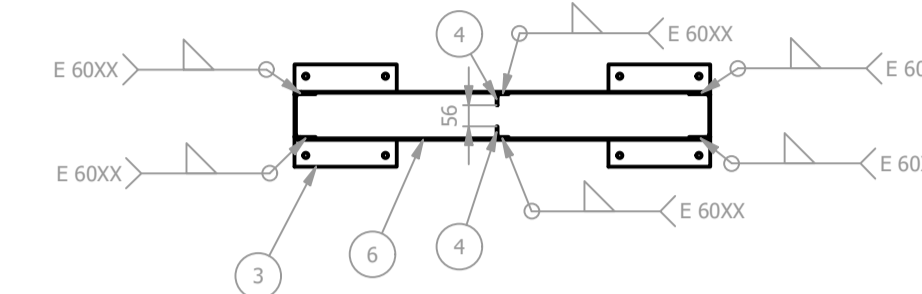
LISTA DE QUANTIDADES						
ID	ITEM	QTD	DESCRIÇÃO	COMPRI.	MATERIAL	PESO UN.
1	TR 2	3				26,0 kg
2	Terça 120 x52 x19	4	Terça 120 x 52 x 19 x3	3000	ASTM A36	17,1 kg
3	Cumeira CT AT 40-1020	3	Cumeira CT 40/1020		ASTM A36	2,5 kg
4	AT 40-1020	6	Telha AT 40-1020 x 0.5	449	ASTM A36	2,1 kg



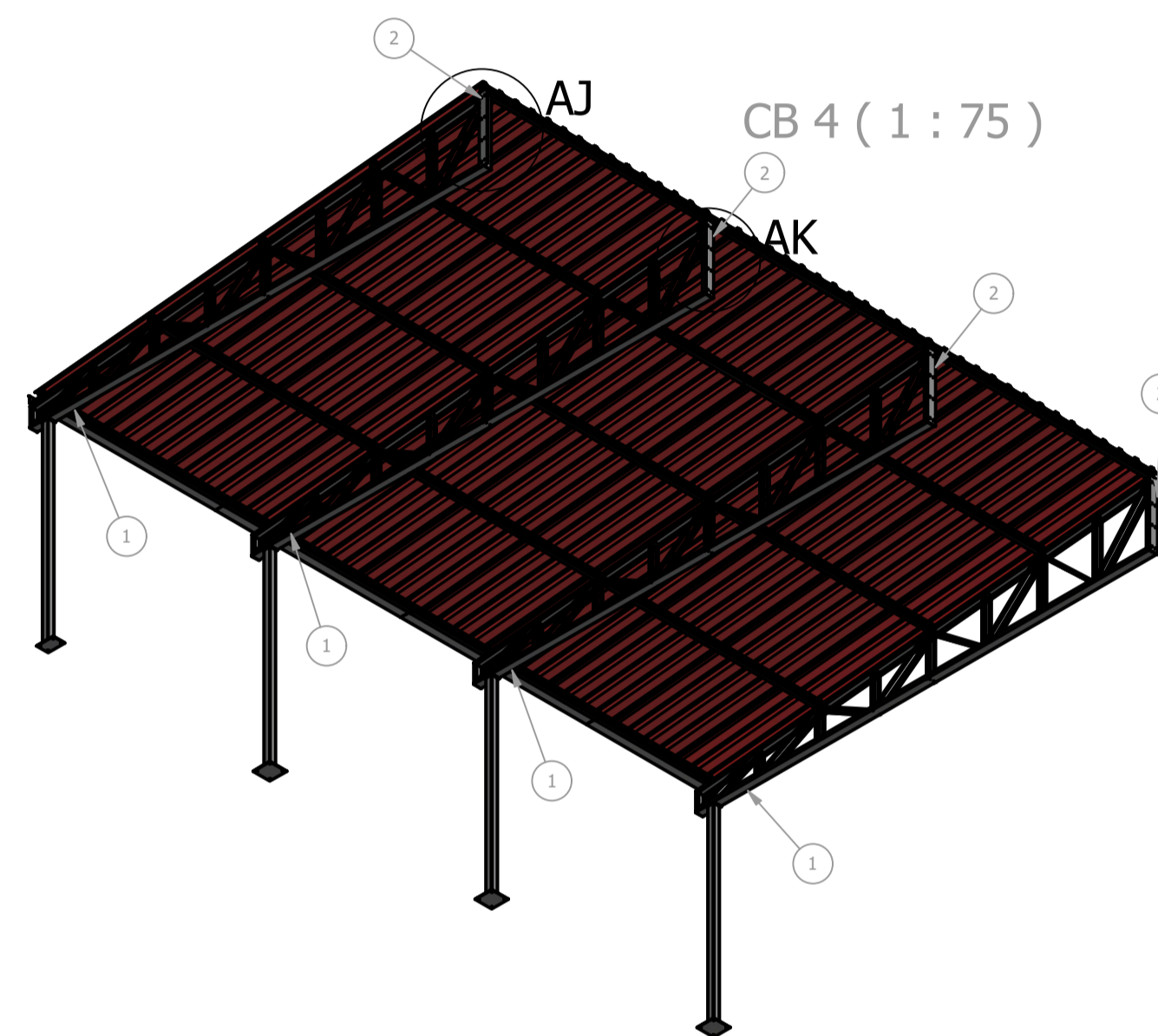
AB-AB (1 : 20)



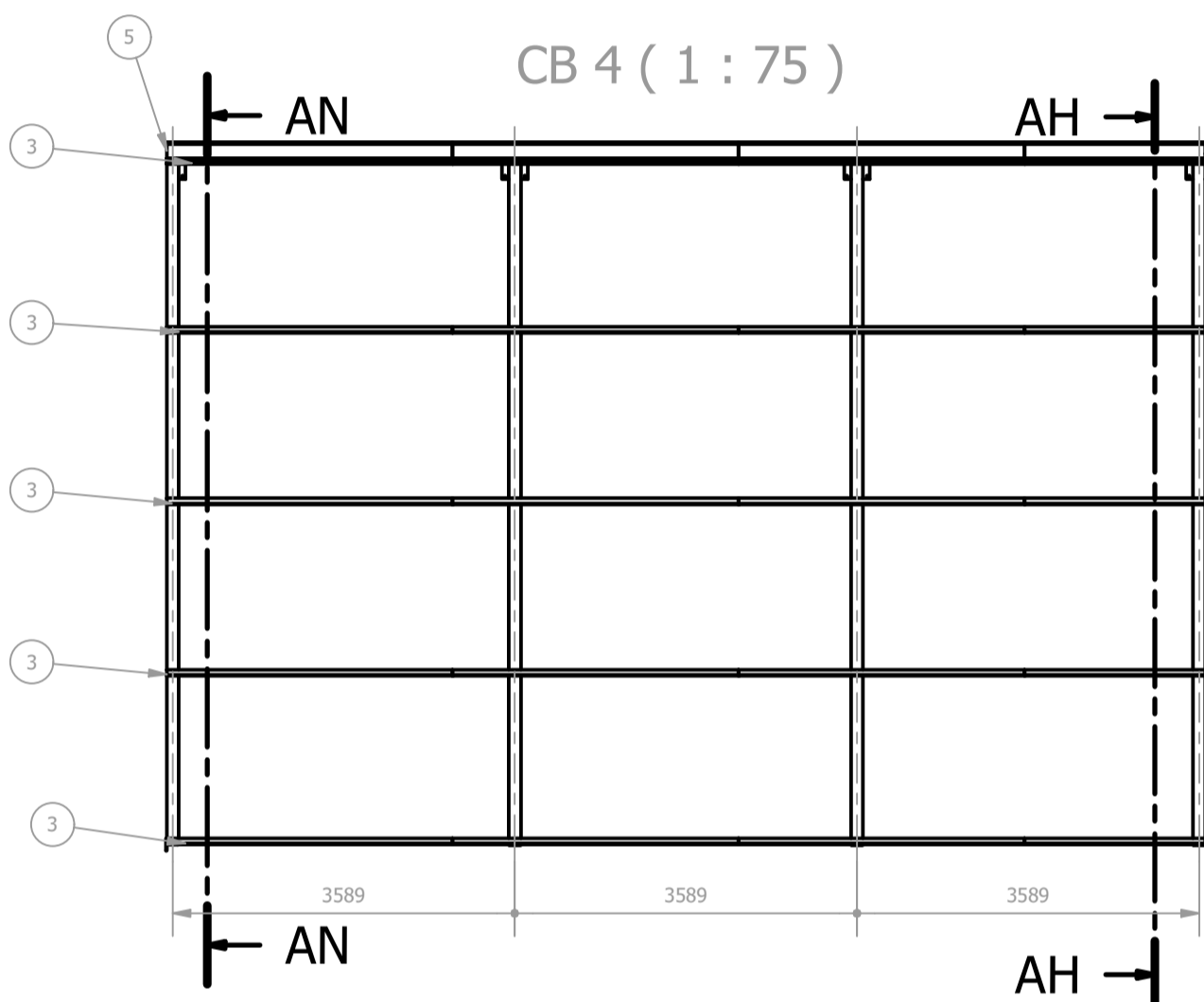
AF-AF (1 : 20)



LISTA DE QUANTIDADES						
ID	ITEM	QTD	DESCRIÇÃO	COMPRI.	MATERIAL	PESO UN.
1	U1	2	3X127X50	553	ASTM A36	2,8 kg
2	U2	2	3X127X50	300	ASTM A36	1,4 kg
3	CH	2	6,35 x 270 x 270		ASTM A36	3,6 kg
4	L1	2	L 1.1.4 x 1.8	349	ASTM A36	0,5 kg
5	L2	4	L 1.1.4 x 1.8	635	ASTM A36	1,0 kg
6	U3	1	3X127X50	1100	ASTM A36	5,5 kg

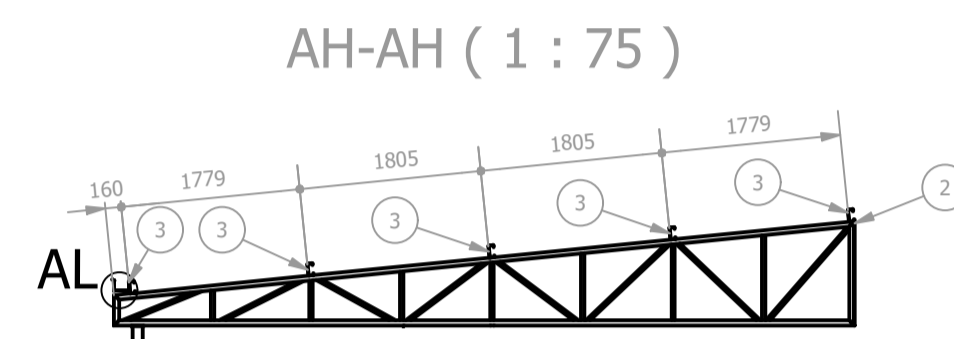
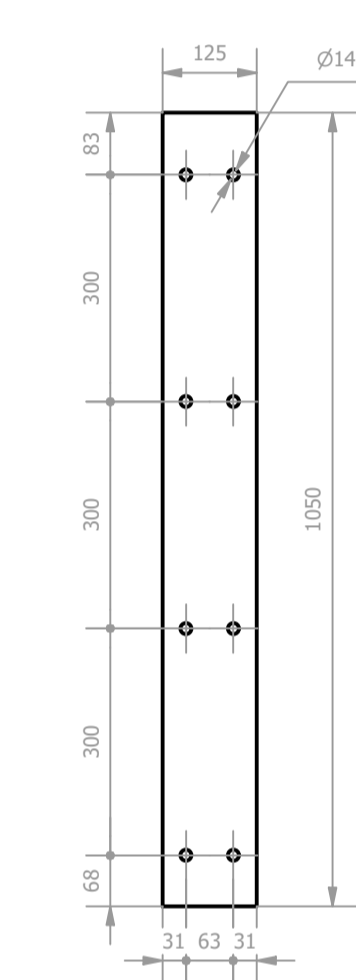


CB 4 (1 : 75)



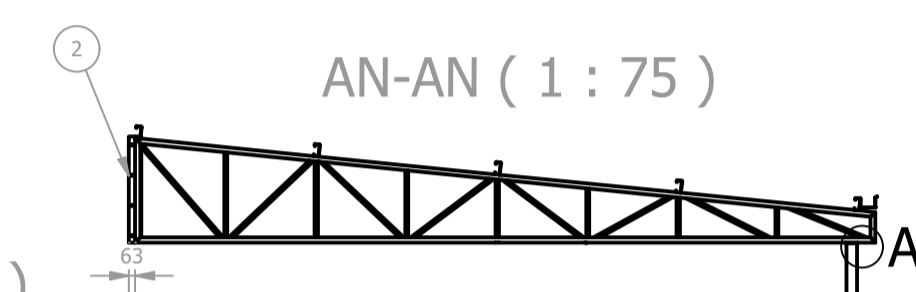
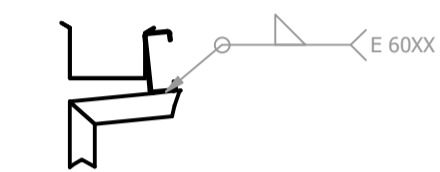
CB 4 (1 : 75)

CH FX P 2 (1 : 10)



AH-AH (1 : 75)

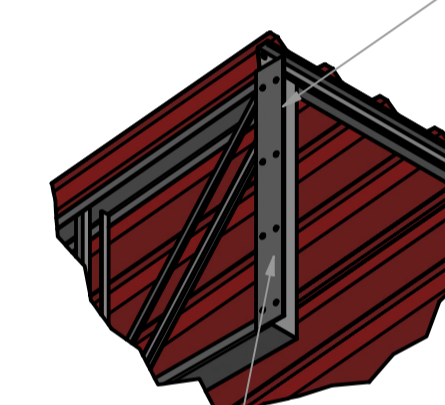
AL (1:15)



AN-AN (1 : 75)

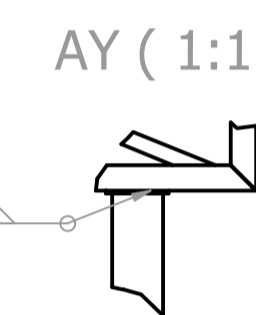
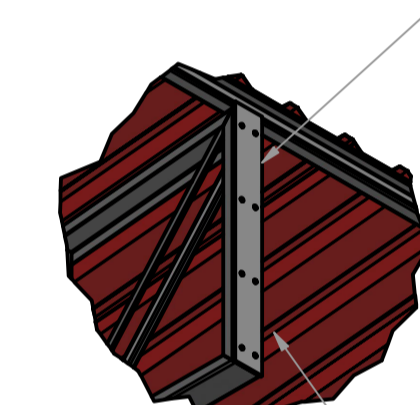
PESO SEM TELHAS: 1089 Kg

LISTA DE QUANTIDADES						
ID	ITEM	QTD	DESCRIÇÃO	COMPRI.	MATERIAL	PESO UN.
1	TR 6	4				184,9 kg
2	CH FX P 2	4	6,35 x x		ASTM A36	6,5 kg
3	Terça 120 x52 x19	20	Terça 120 x 52 x 19 x3	3000	ASTM A36	17,1 kg
4	Anãda AT 40-1020	11	Telha AT 40-1020 x 0.5	7280	ASTM A36	34,7 kg
5	Calha 150 X120	4	Calha 150 x 100	3000	ASTM A36	3,8 kg



AJ (1:25)

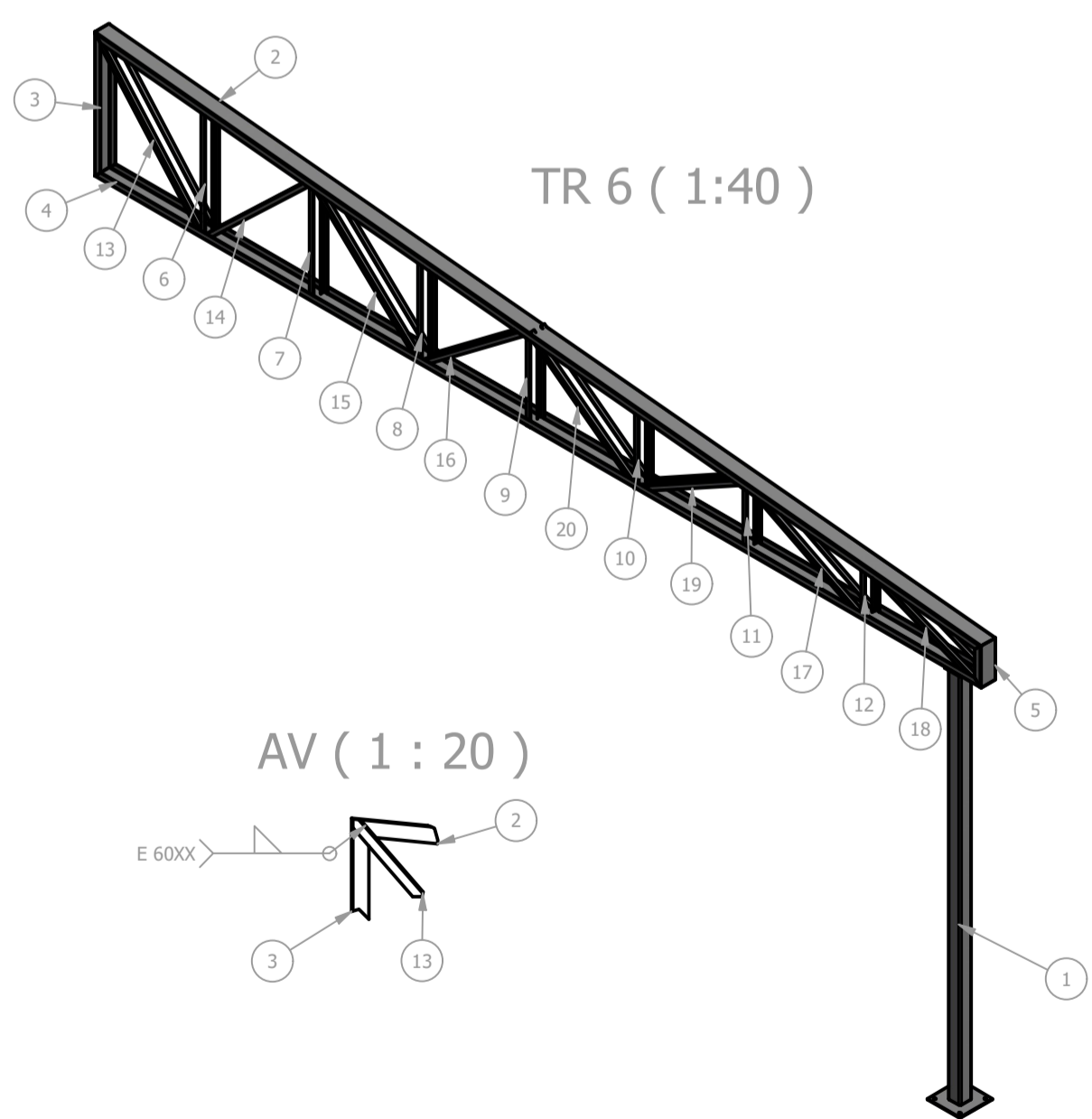
AK (1:25)



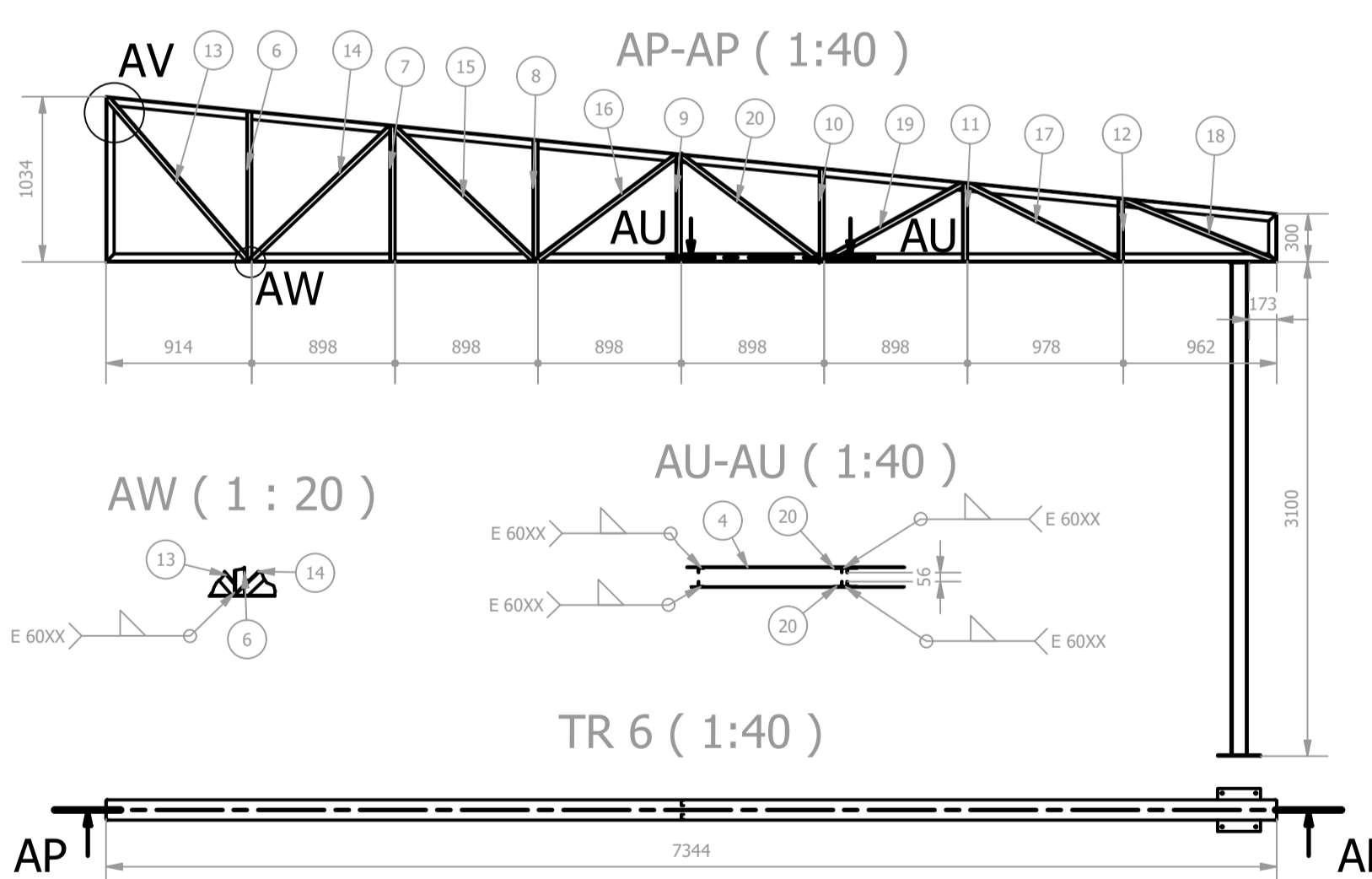
AY (1:15)

CHAPA SOLDADA NA LATERAL DO PERFIL

CHAPA SOLDADA ATRÁS DO PERFIL



TR 6 (1:40)



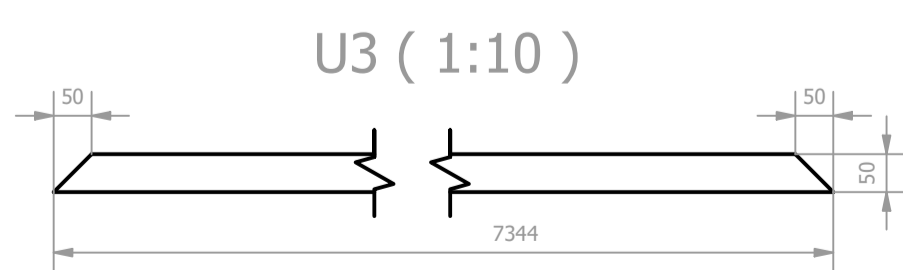
AP-AP (1:40)

AW (1 : 20)

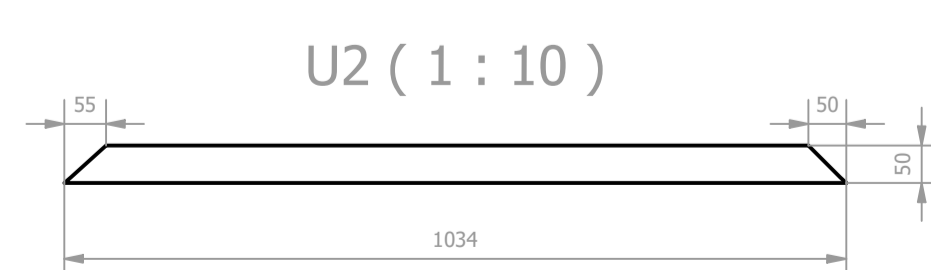
AU-AU (1:40)

TR 6 (1:40)

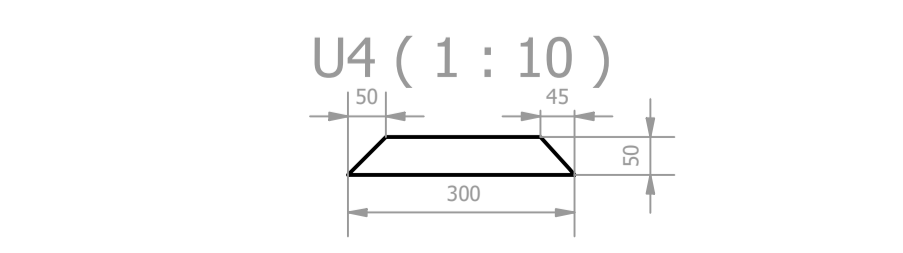
LISTA DE QUANTIDADES						
ID	ITEM	QTD	DESCRIÇÃO	COMPRI.	MATERIAL	PESO UN.
1	PILAR	1				60,5 kg
2	U1	1	3X127X50	7380	ASTM A36	37,6 kg
3	U2	1	3X127X50	1034	ASTM A36	5,1 kg
4	U3	1	3X127X50	7344	ASTM A36	37,4 kg
5	U4	1	3X127X50	300	ASTM A36	1,4 kg
6	L1	2	L 1.1.4 x 1.8	940	ASTM A36	1,5 kg
7	L2	2	L 1.1.4 x 1.8	850	ASTM A36	1,3 kg
8	L3	2	L 1.1.4 x 1.8	761	ASTM A36	1,2 kg
9	L4	2	L 1.1.4 x 1.8	674	ASTM A36	1,1 kg
10	L5	2	L 1.1.4 x 1.8	581	ASTM A36	0,9 kg
11	L6	2	L 1.1.4 x 1.8	491	ASTM A36	0,8 kg
12	L7	2	L 1.1.4 x 1.8	393	ASTM A36	0,6 kg
13	L8	2	L 1.1.4 x 1.8	1353	ASTM A36	2,1 kg
14	L9	2	L 1.1.4 x 1.8	1234	ASTM A36	1,9 kg
15	L10	2	L 1.1.4 x 1.8	1212	ASTM A36	1,9 kg
16	L11	2	L 1.1.4 x 1.8	1118	ASTM A36	1,7 kg
17	L12	2	L 1.1.4 x 1.8	1064	ASTM A36	1,6 kg
18	L13	2	L 1.1.4 x 1.8	1035	ASTM A36	1,6 kg
19	L14	2	L 1.1.4 x 1.8	1021	ASTM A36	1,6 kg
20	L15	2	L 1.1.4 x 1.8	1108	ASTM A36	1,7 kg



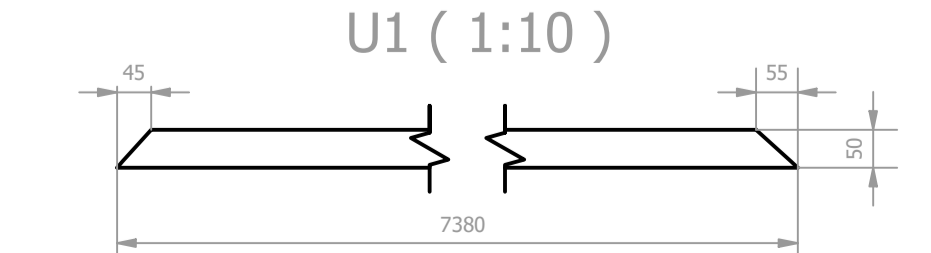
U3 (1:10)



U2 (1 : 10)

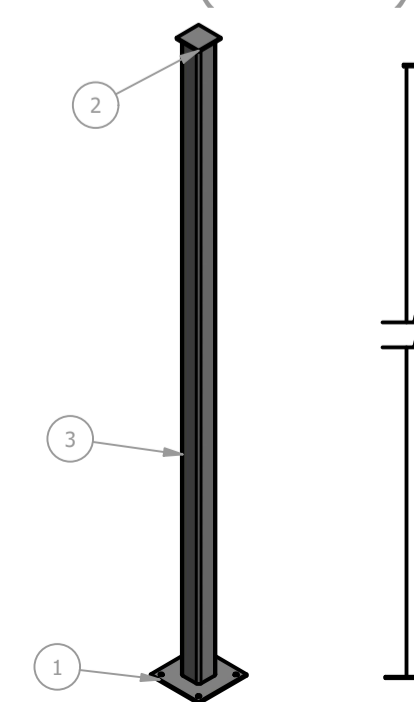


U4 (1 : 10)

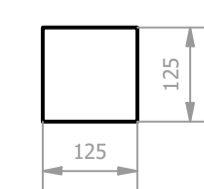


U1 (1:10)

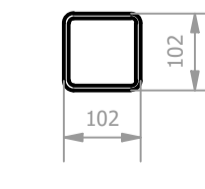
PILAR (1 : 30)



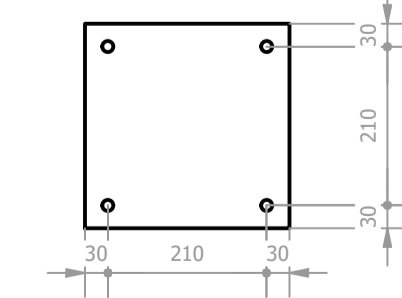
CH FX (1 : 10)



TQ (1 : 10)



CH (1:10)



LISTA DE QUANTIDADES						
ID	ITEM	QTD	DESCRIÇÃO	COMPRI.	MATERIAL	PESO UN.
1	CH	1	6,35 x 270 x 270		ASTM A36	3,6 kg
2	CH FX	1	6,35 x 125 x 125		ASTM A36	0,8 kg
3	TQ	1	4 x 4 x 1/4	3087	ASTM A36	56,1 kg

REV. 00 29/11/21 EMISSÃO INICIAL		DAC
REVISÃO DATA : DESCRIÇÃO:		RESP.:
<p>Prefeitura Municipal de Pouso Alegre</p>		
<p>DAC Engenharia</p> <p>Rua Miguel Viana, n° 81, Sala 12 Bairro Morro Chic CEP: 37500-080 - Itajubá / MG Tel: (35) 3623-5720 www.dacengenharia.com.br</p>		<p>GERÊNCIA DE PROJETOS PEDRO HENRIQUE JUSTINIANO ENG. CIVIL</p> <p>COORDENAÇÃO DE PROJETOS ALOÍSIO CAETANO FERREIRA MG-97.132/D</p> <p>RESPONSÁVEL TÉCNICO ENG° CIVIL FLÁVIA C. BARBOSA MG-187.842/D</p> <p>PROJETO RUA EDUARDO SOUZA GOUVEIA, B. JARDIM OLÍMPICO POUSO ALEGRE - MINAS GERAIS</p> <p>ASSUNTO COBERTURA METÁLICA DETALHAMENTO, QUANTITATIVO E QUALITATIVO</p> <p>DISCIPLINA METÁLICA A</p> <p>FASE DO PROJETO EXECUTIVO</p> <p>FOLHA N° 3/5</p>
<p>EMPREENDIMENTO CONSTRUÇÃO DA UBS ÁRVORE GRANDE</p>		
DATA INICIAL 29/11/2021	ESCALA INDICADA	REVISÃO R00
ARQUIVO DAC-PMPA-ARG-PE-MET-R00		