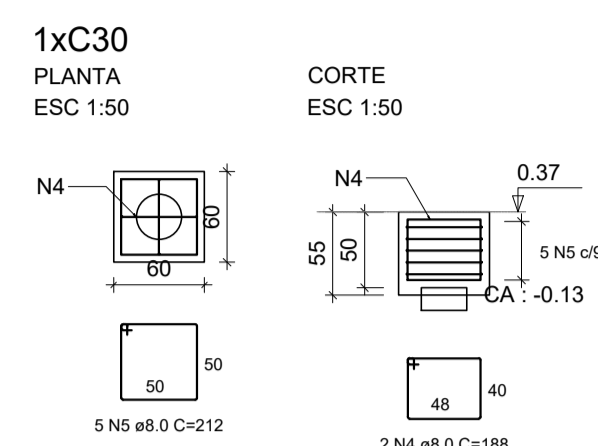
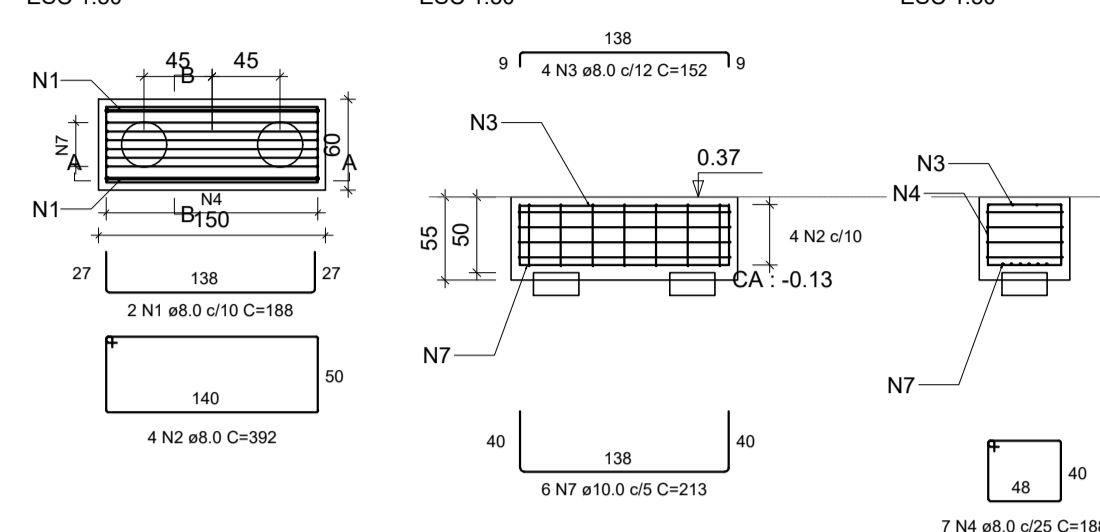


BLOCOS COM UMA ESTACA



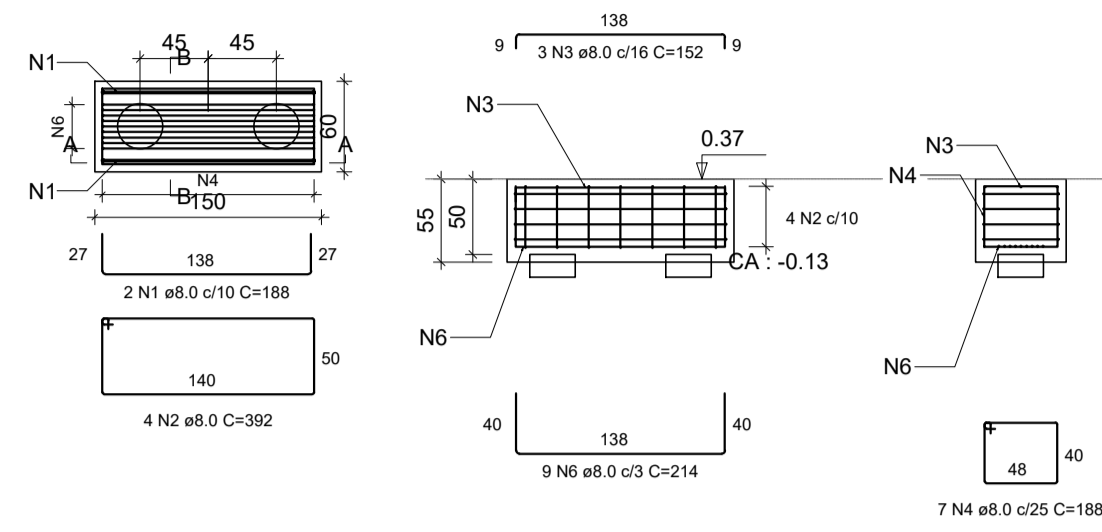
BLOCOS COM DUAS ESTACA

B11=B18=B28=B96
2xC30
PLANTA
ESC 1:50



BLOCOS COM DUAS ESTACA

B57=58
2xC30
PLANTA
ESC 1:50



RELAÇÃO DO AÇO - BLOCOS

AÇO	N	DIAM (mm)	QUANT	C.UNIT (cm)	C.TOTAL (cm)
CA50	1	8.0	10	188	1880
	2	8.0	20	392	7840
	3	8.0	19	152	2888
	4	8.0	197	188	37036
	5	8.0	405	212	85860
	6	8.0	9	214	1926
	7	10.0	24	213	5112

RESUMO DO AÇO - BLOCOS

AÇO	DIAM (mm)	C.TOTAL (m)	PESO + 10% (kg)
CA50	8.0	1374.3	596.5
CA50	10.0	51.1	34.7
PESO TOTAL (kg)			
CA50		631.2	

Volume de concreto (C-30) = 18.19 m³
Área de forma = 118.47 m²

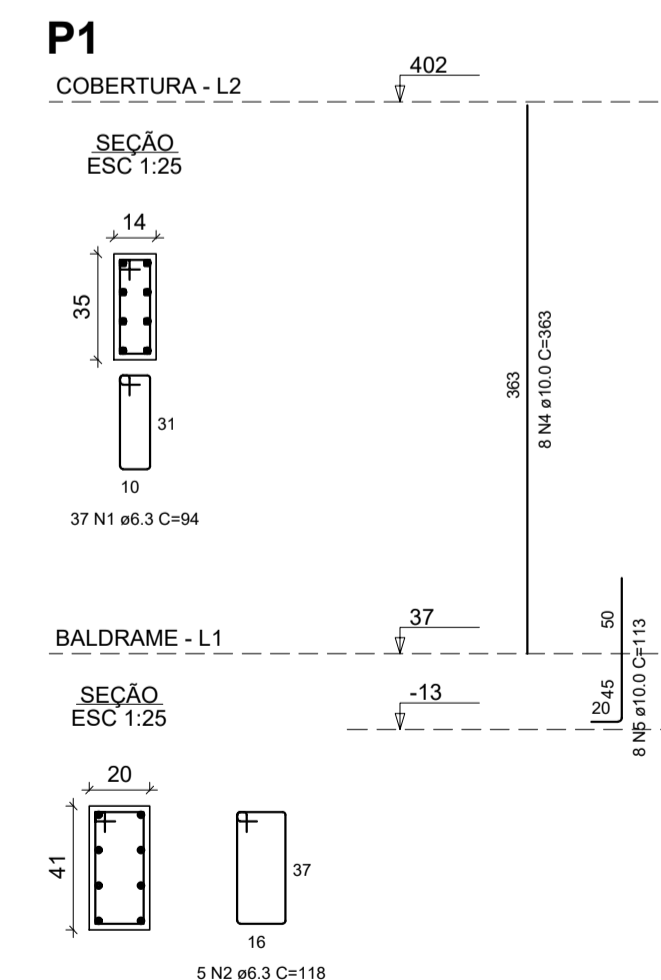
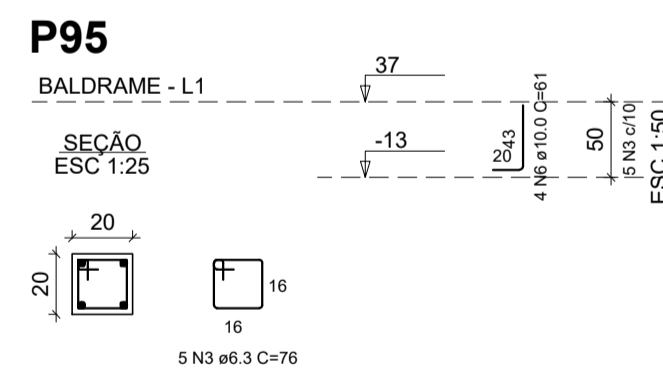
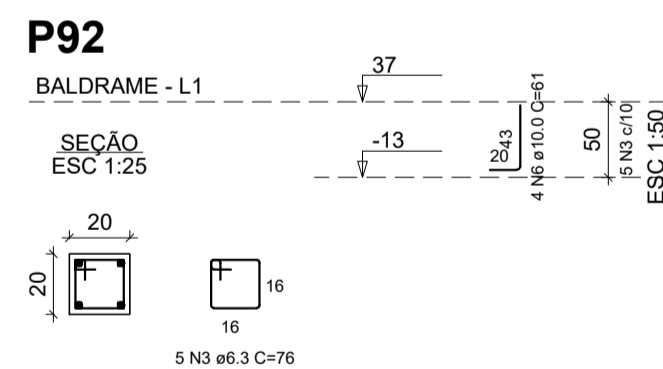
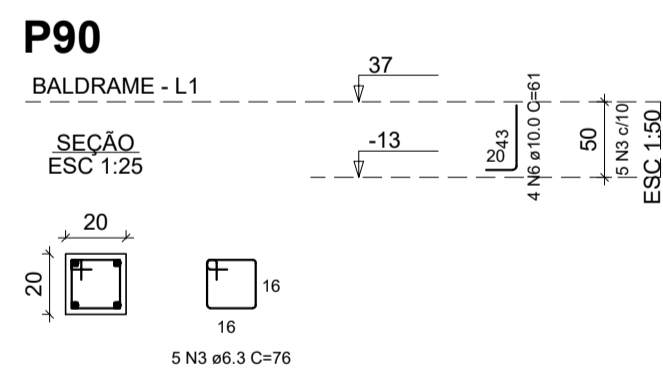
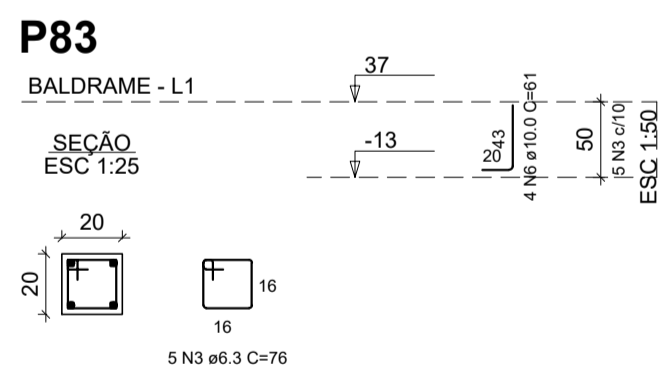
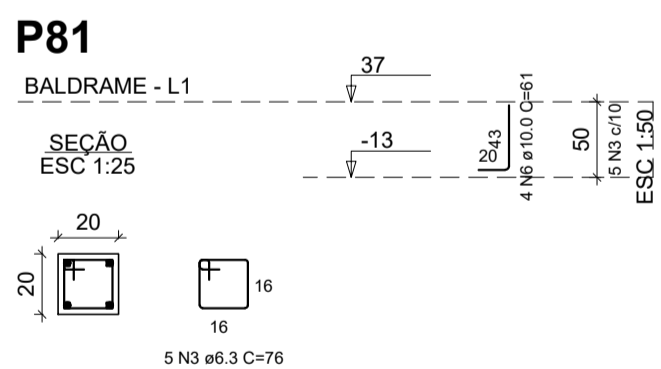
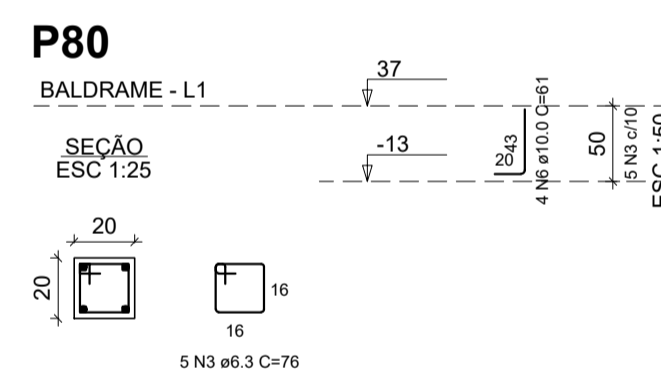
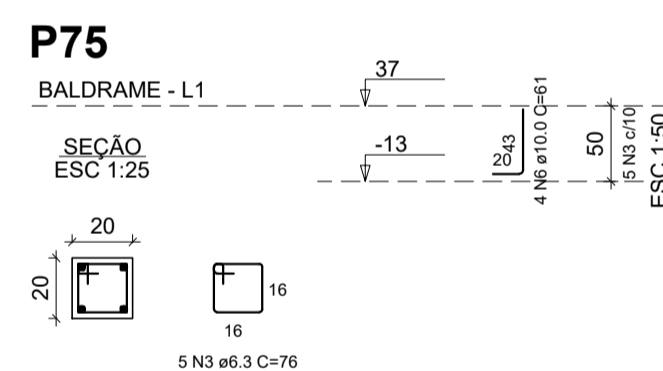
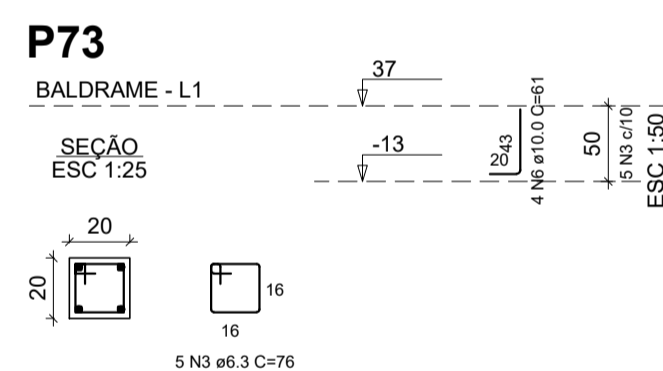
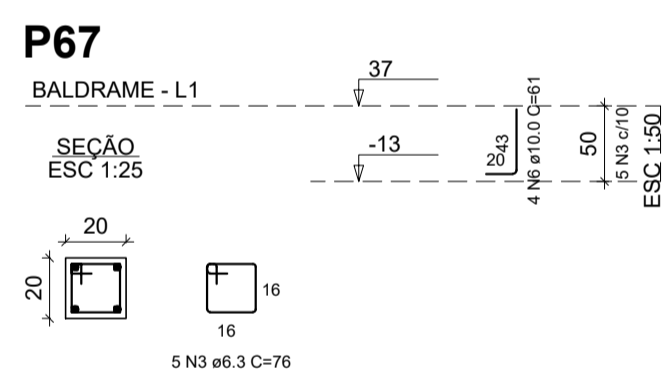
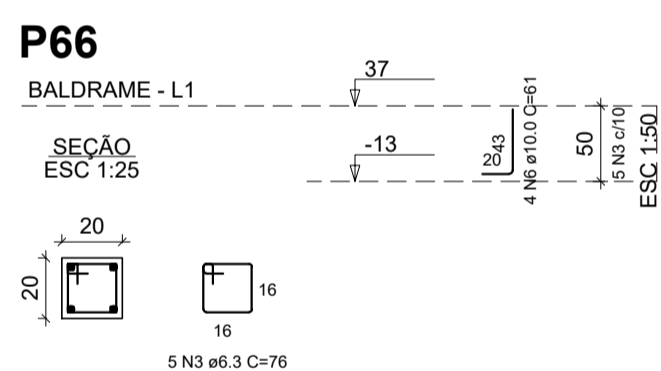
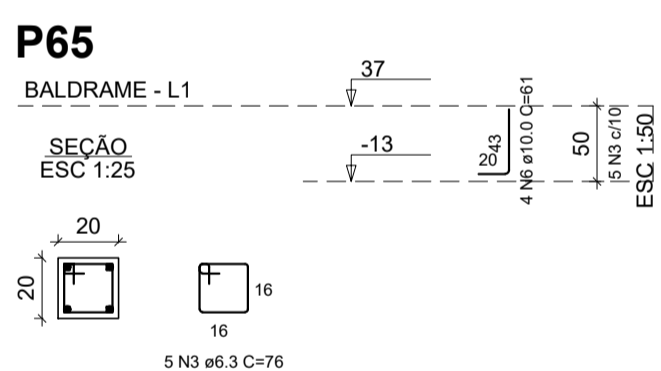
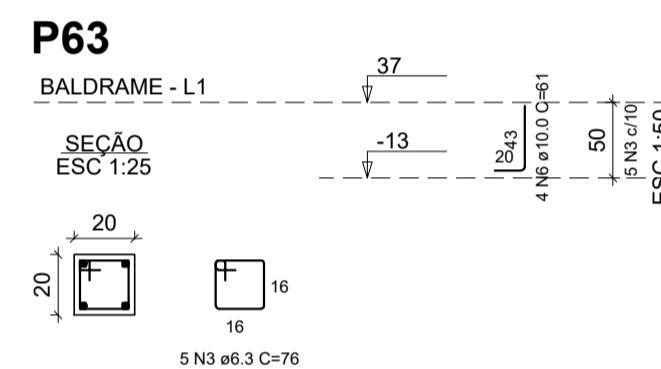
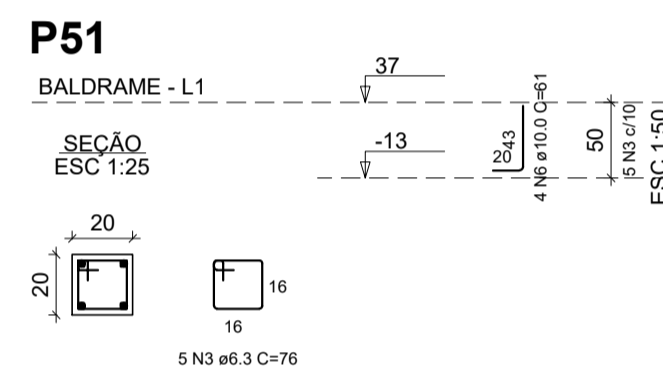
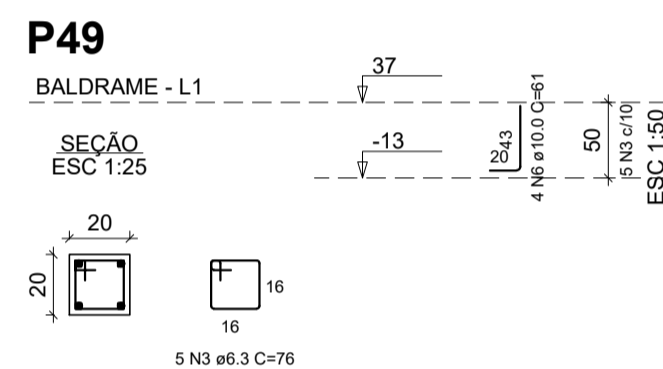
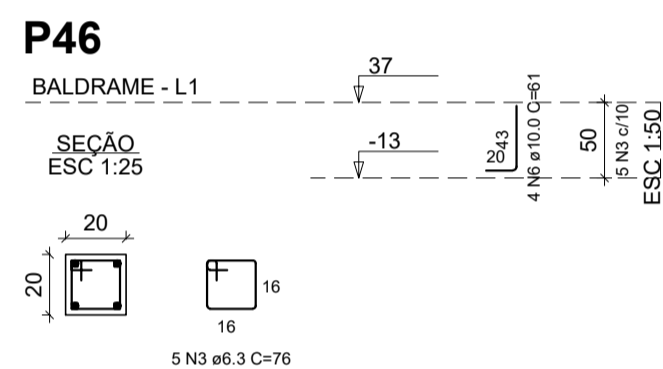
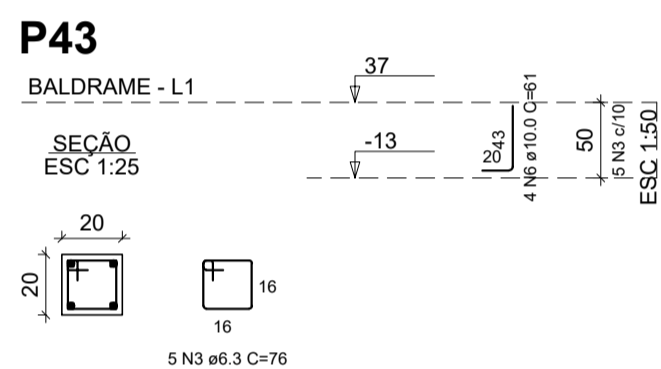
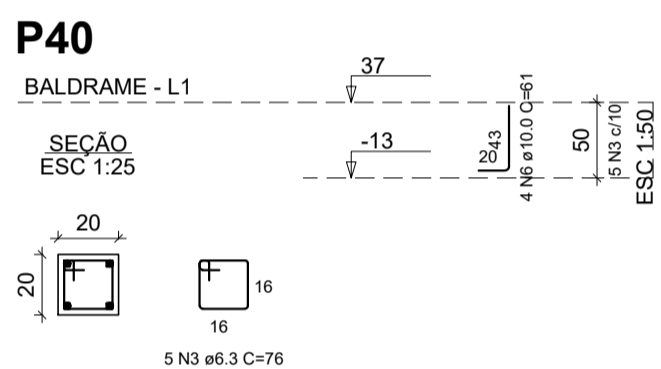
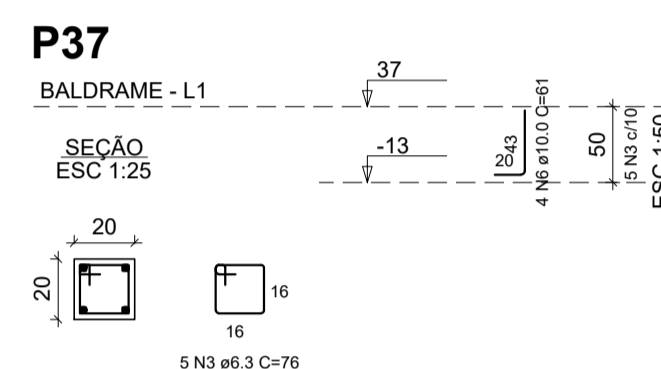
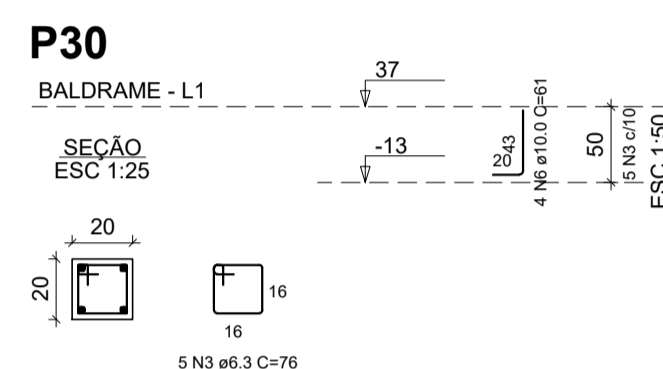
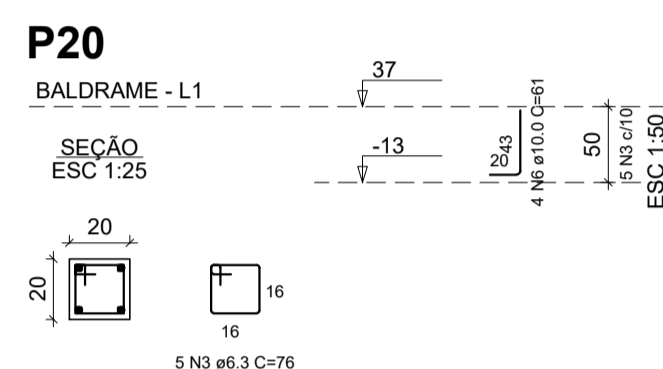
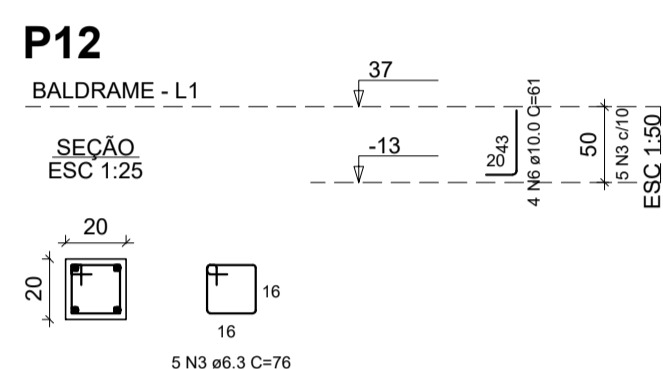
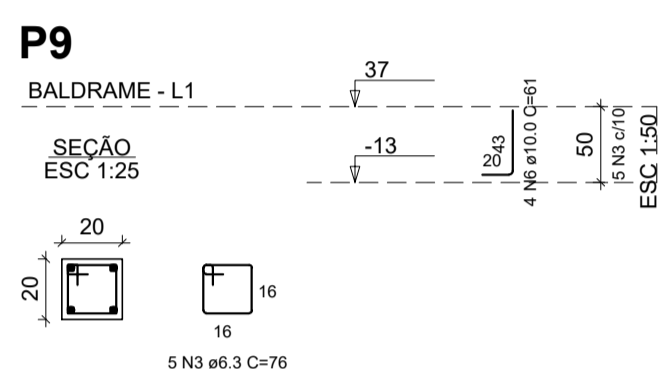
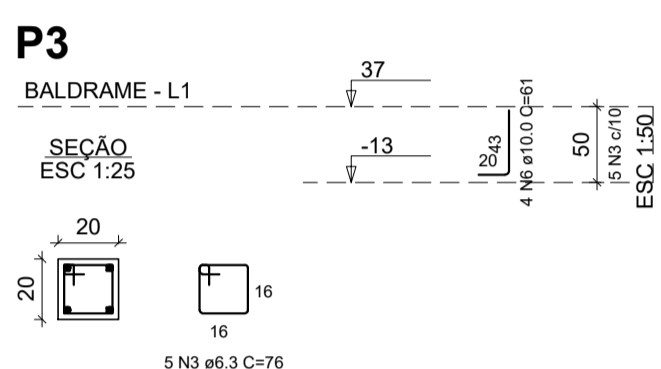
RELAÇÃO DO AÇO

AÇO	N	DIAM (mm)	QUANT	C.UNIT (cm)	C.TOTAL (cm)
CA50	1	6.3	37	94	3478
	2	6.3	5	118	590
	3	6.3	115	76	8740
	4	10.0	8	363	2904
	5	10.0	8	113	904
	6	10.0	92	61	5612

RESUMO DO AÇO

AÇO	DIAM (mm)	C.TOTAL (m)	PESO + 10% (kg)
CA50	6.3	128.1	34.5
CA50	10.0	94.2	63.9
PESO TOTAL (kg)			
CA50		98.4	

Volume de concreto (C-30) = 0.68 m³
Área de forma = 13.39 m²



<p>REV. 00 26/11/21 EMISSÃO INICIAL DAC</p> <p>REVISÃO DATA : DESCRICÃO. RESP.:</p>	<p>CLIENTE</p>
<p>PROJETO</p> <p>Rua Miguel Viana, nº 81, Sala 12 Bairro Morro Chic CEP: 37500-080 - Itajubá / MG Tel: (35) 3623-5720 www.dacengenharia.com.br</p>	<p>GERÊNCIA DE PROJETOS PEDRO HENRIQUE JUSTINIANO ENO CIVIL</p> <p>COORDENAÇÃO DE PROJETOS ALDOISO CAETANO FERREIRA CREA-MG-97.132/D</p> <p>RESPONSÁVEL TÉCNICO ENO FLÁVIA CRISTINA BARBOSA CREA-MG-187.842/D</p> <p>PROJETO WILLIAM BARADEL LARI</p> <p>DESENHO WILLIAM BARADEL LARI</p>
<p>EMPREENDIMENTO</p> <p>CONSTRUÇÃO DA UBS ÁRVORE GRANDE</p>	
<p>ENDEREÇO</p> <p>RUA EDUARDO SOUZA GOUVEIA, B. JARDIM OLÍMPICO POUSO ALEGRE - MINAS GERAIS</p> <p>ASSUNTO</p> <p>PROJETO ESTRUTURAL EM CONCRETO ARMADO DETALHAMENTO DOS PILARES</p>	<p>DISCIPLINA</p> <p>ESTRUTURAL</p> <p>FASE DO PROJETO</p> <p>EXECUTIVO</p> <p>FOLHA Nº.</p> <p>06/25</p>
<p>DATA INICIAL</p> <p>02/08/2521</p>	<p>ESCALA</p> <p>INDICADA</p>
<p>REVISÃO</p> <p>R00</p>	<p>ARQUIVO</p> <p>DAC-PMPA-ARG-EST-PE-R00.DWG</p>