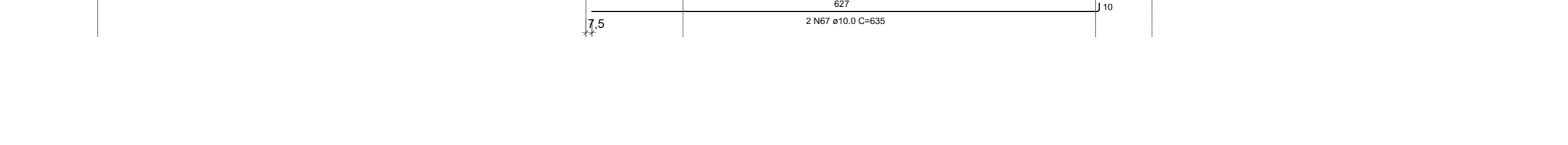
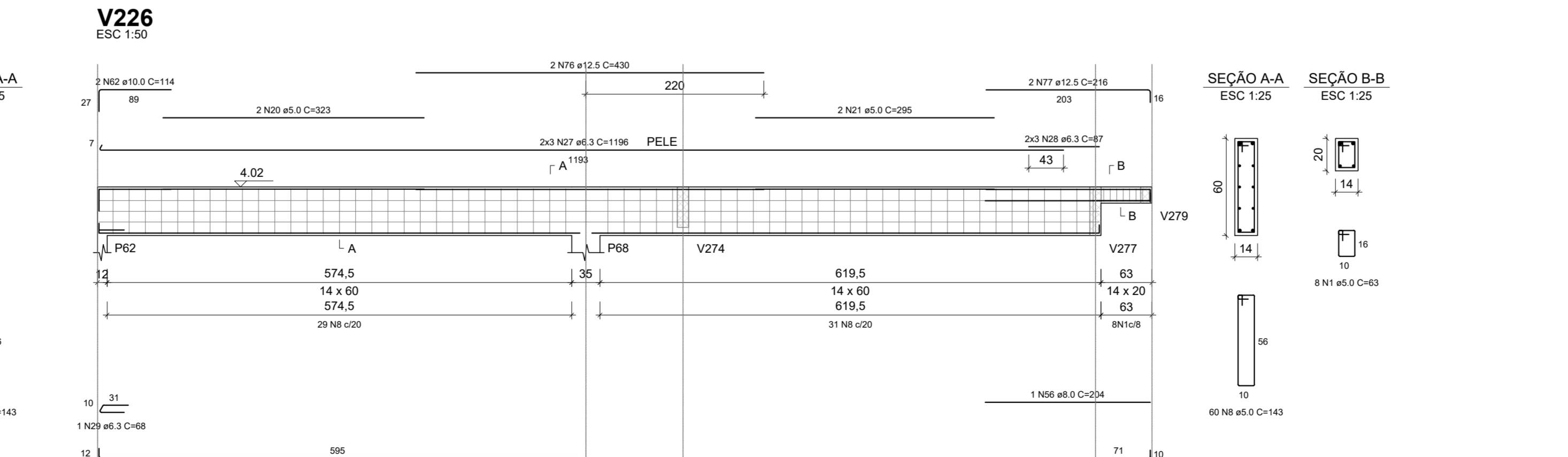
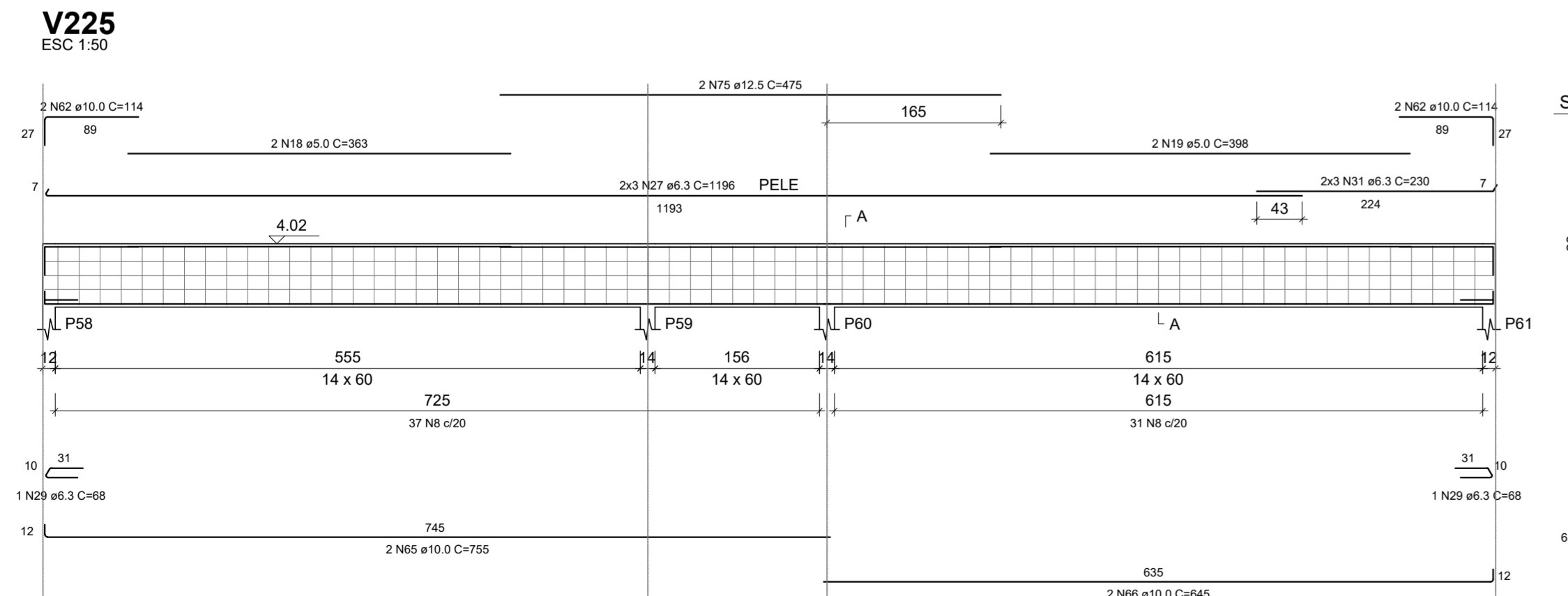
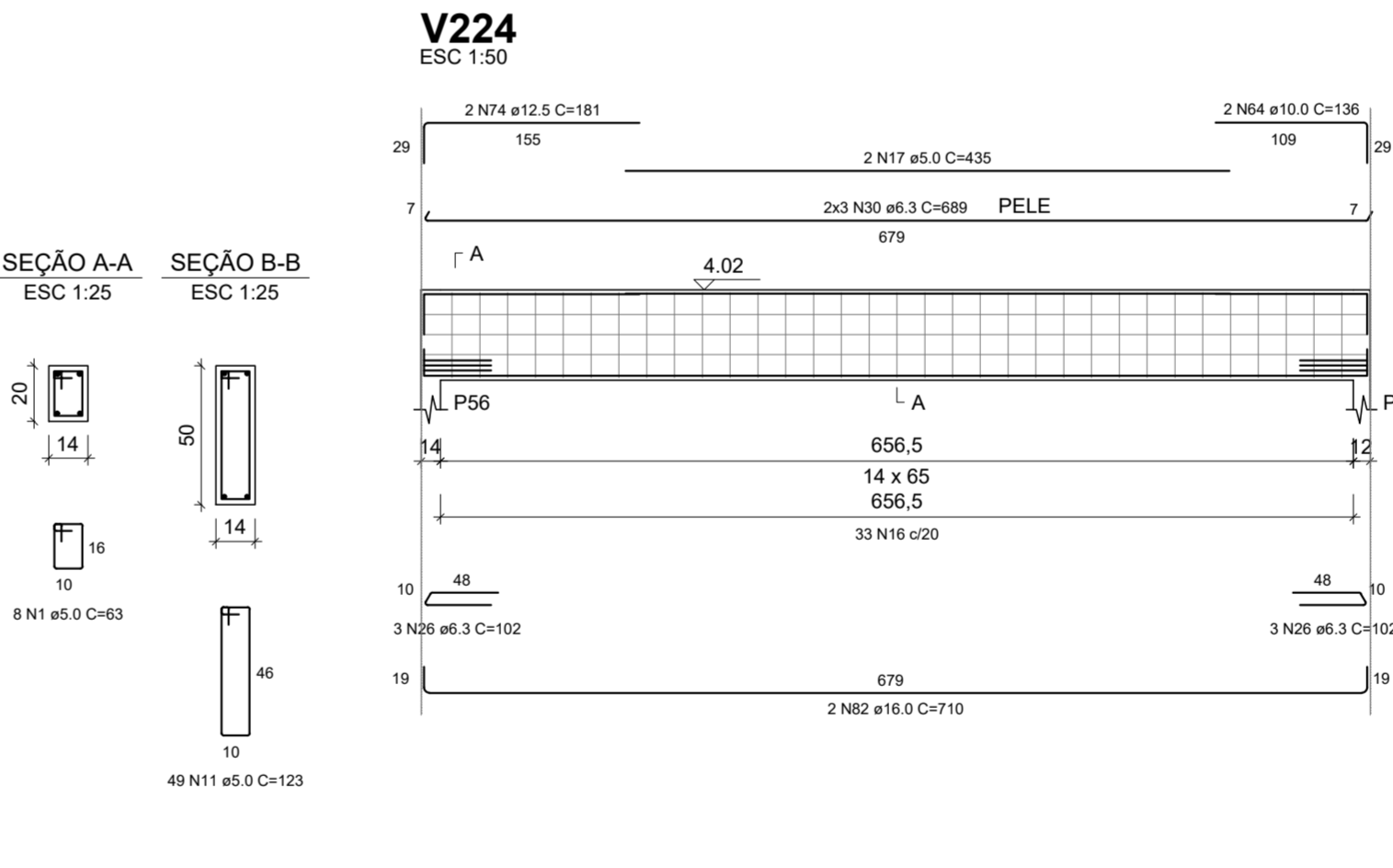
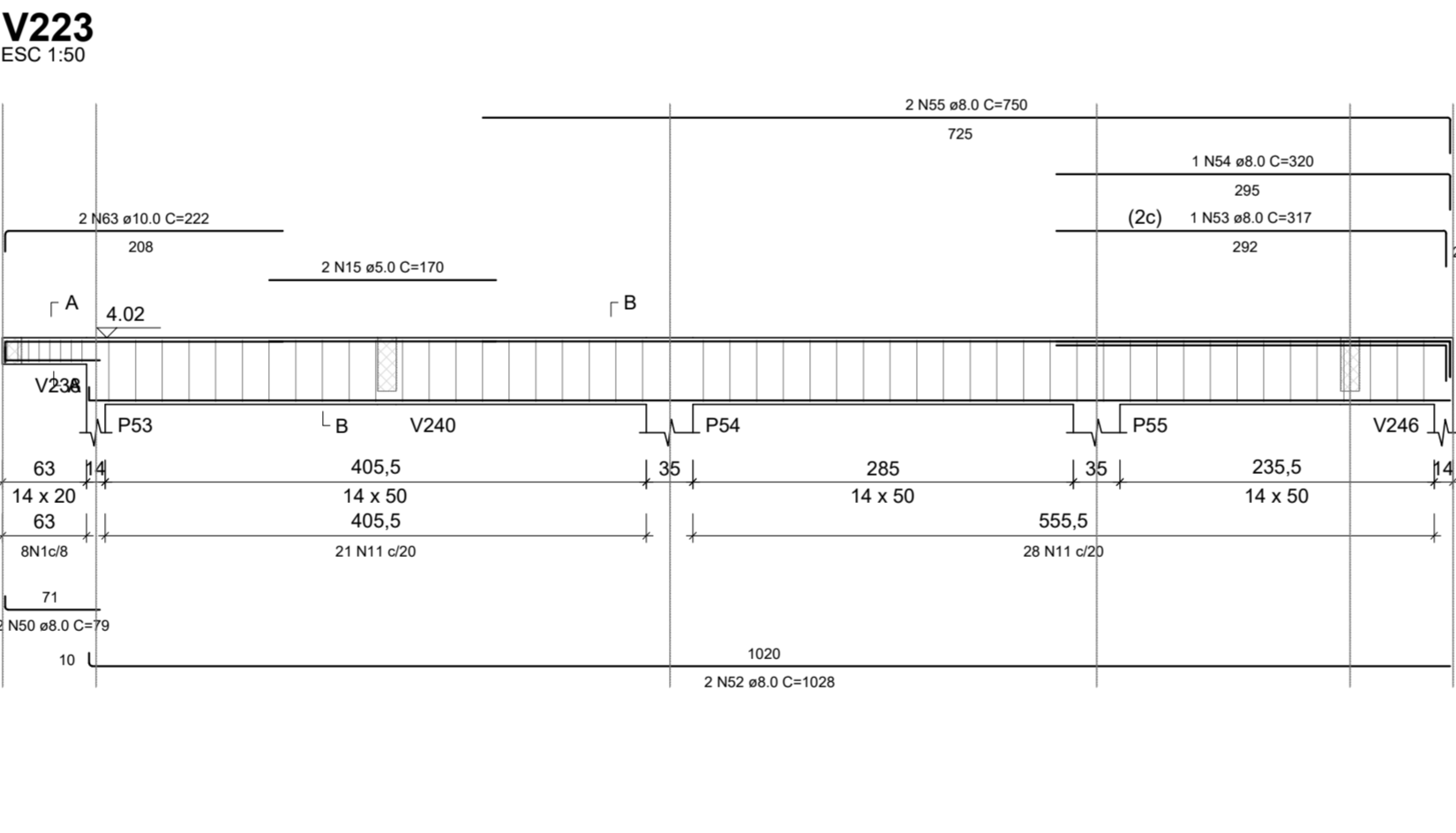
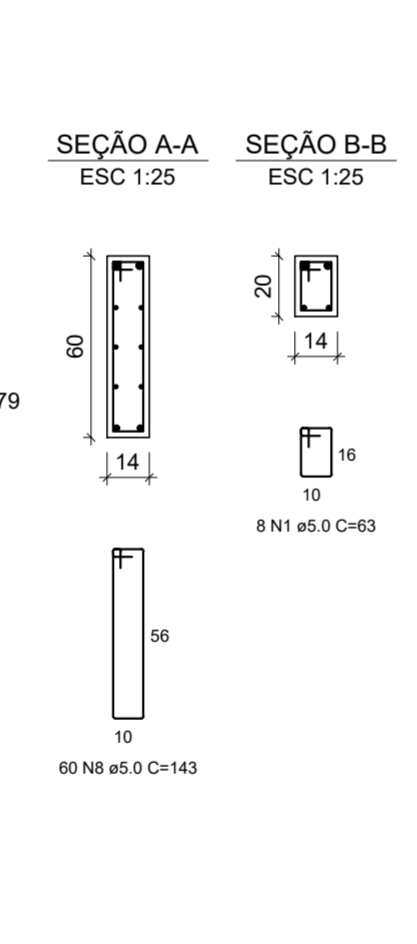
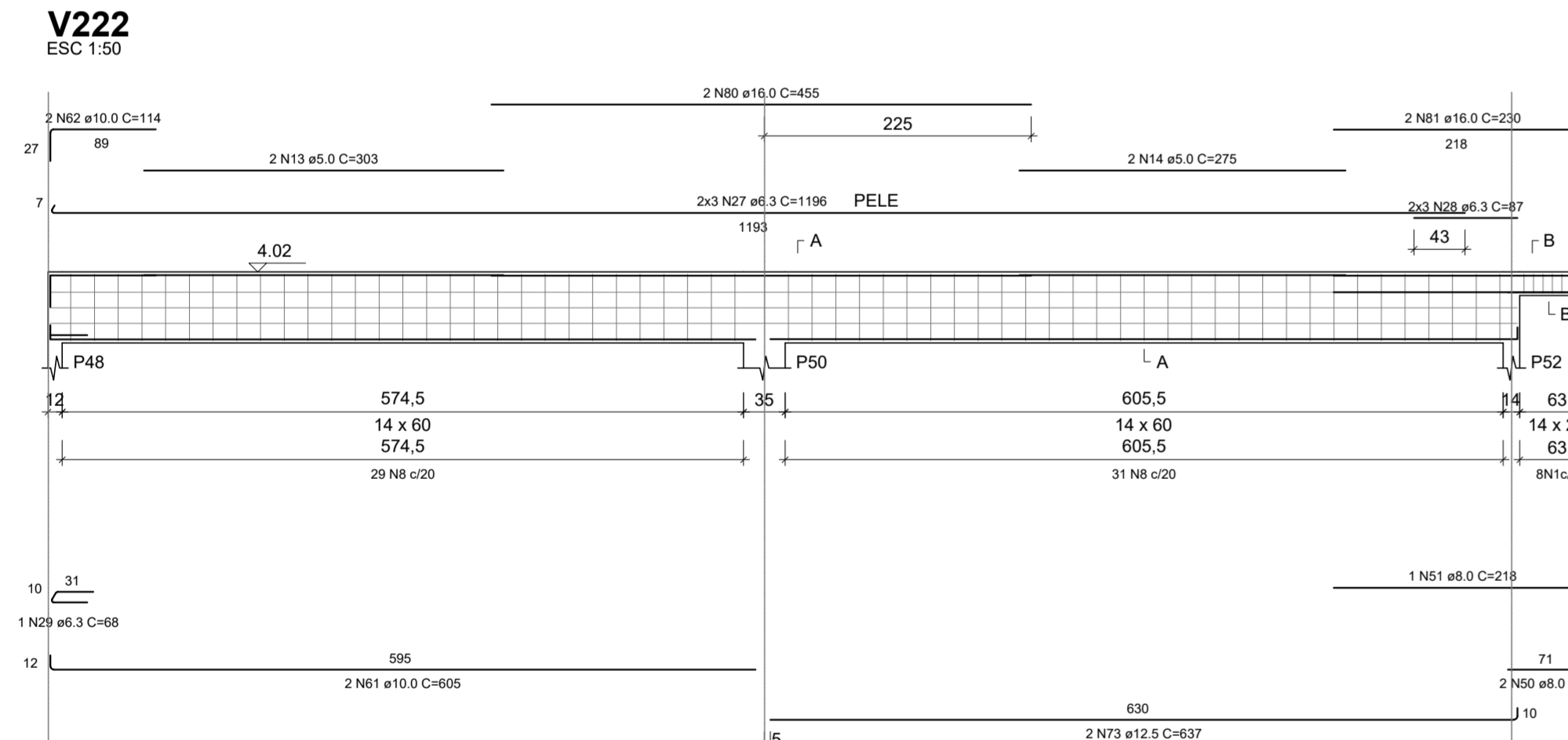
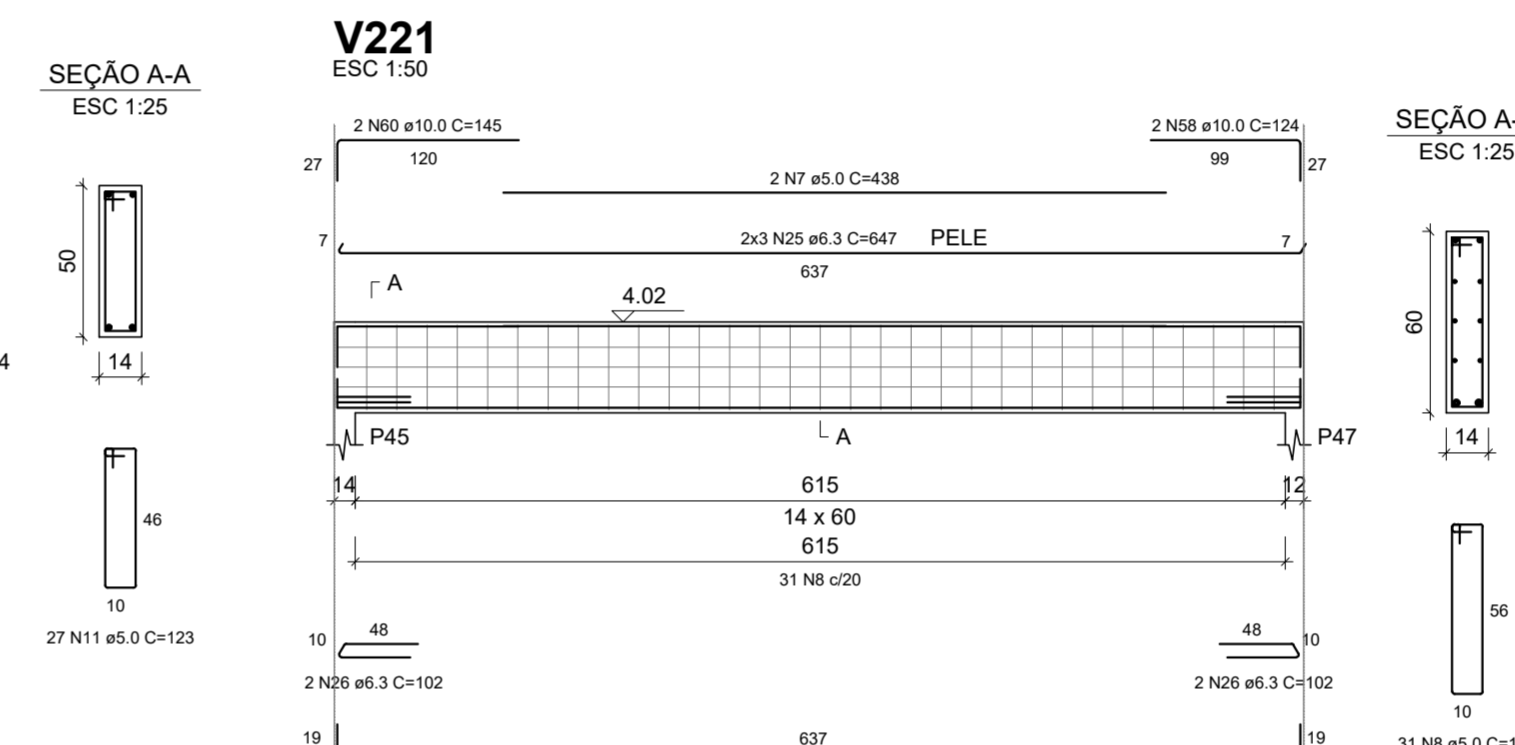
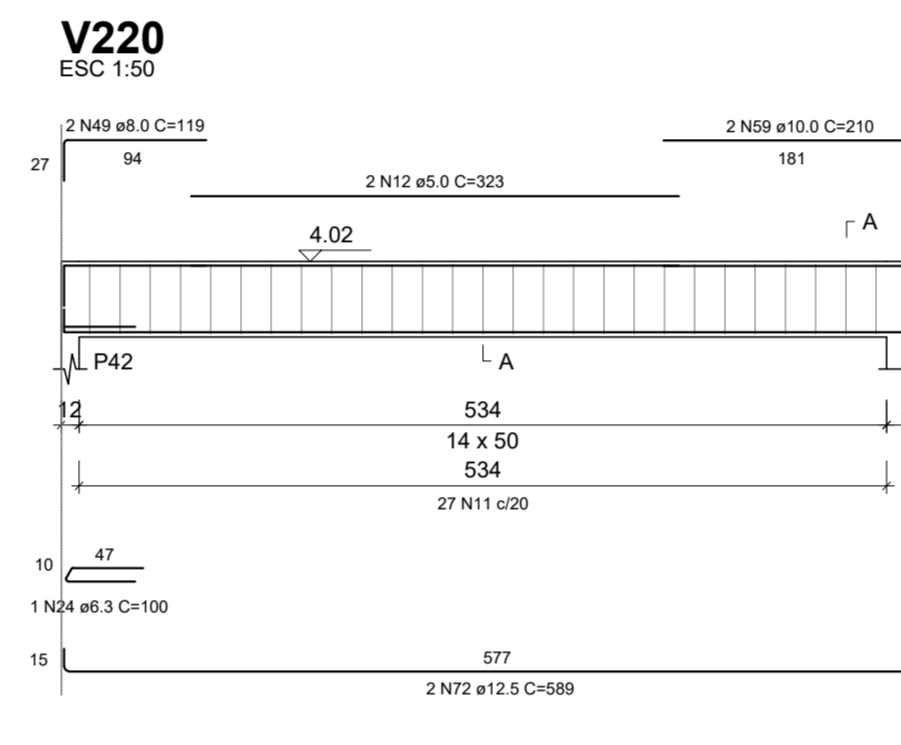
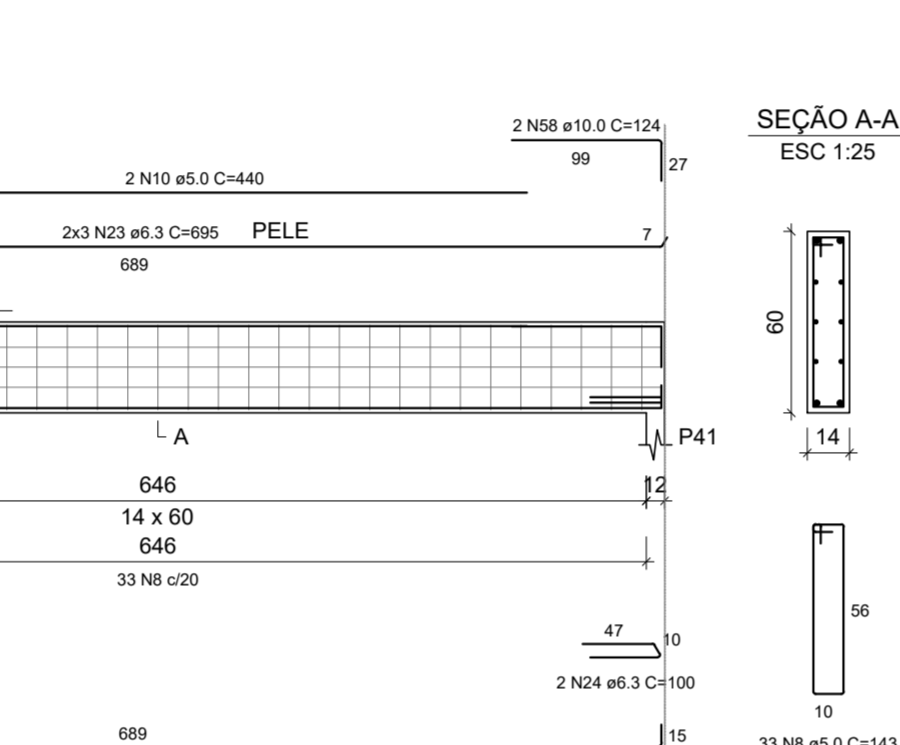
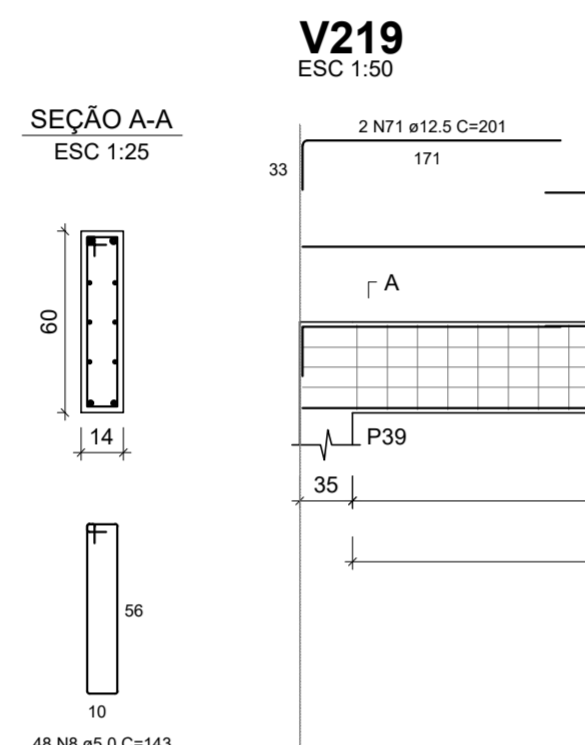
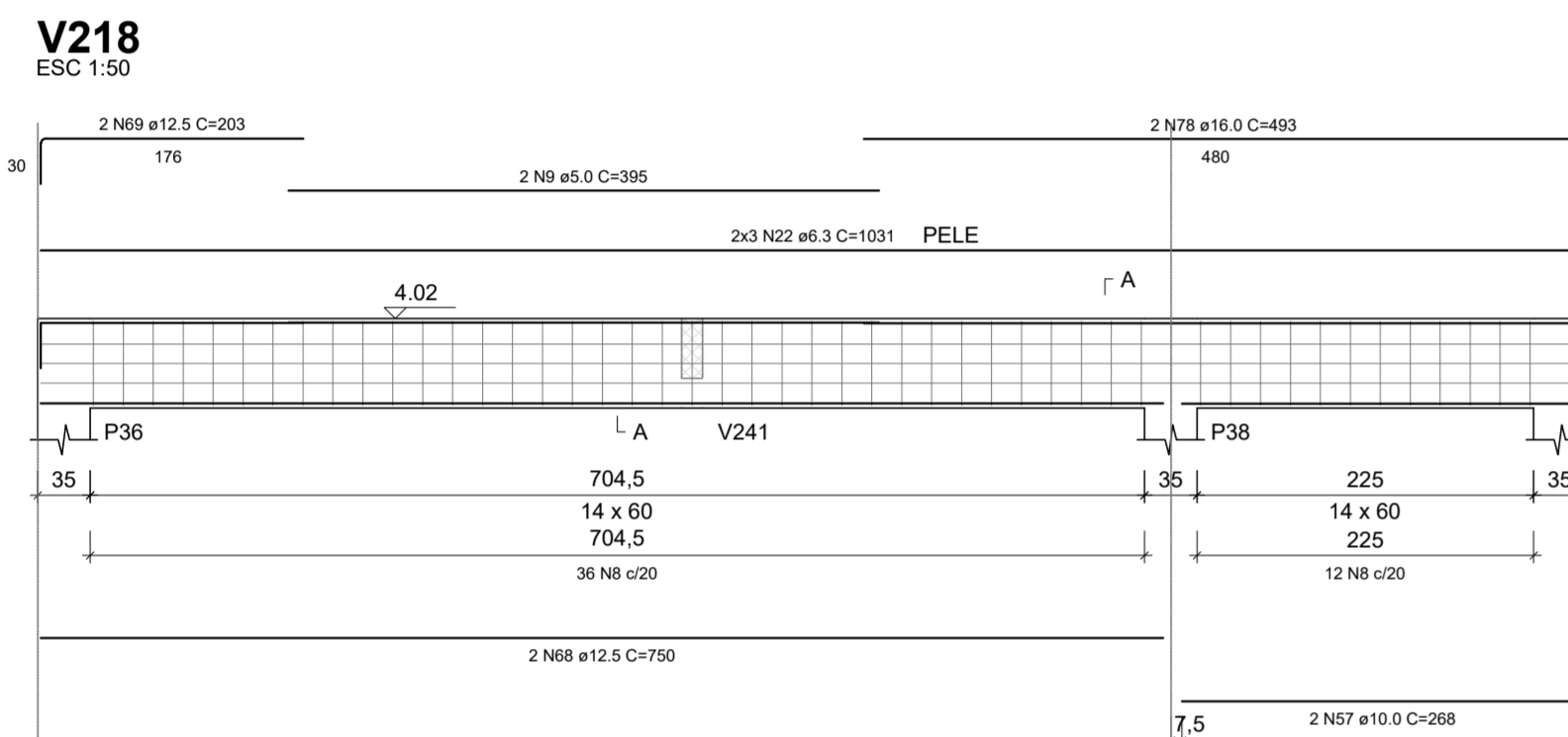
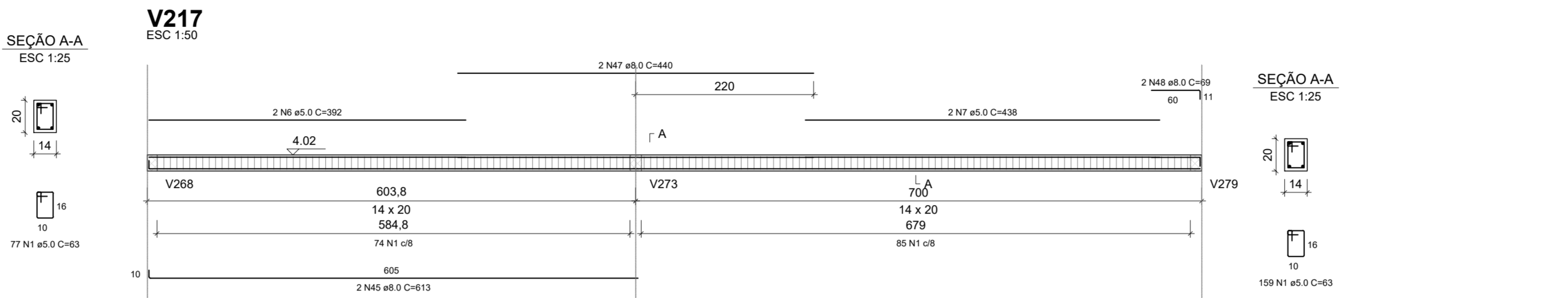
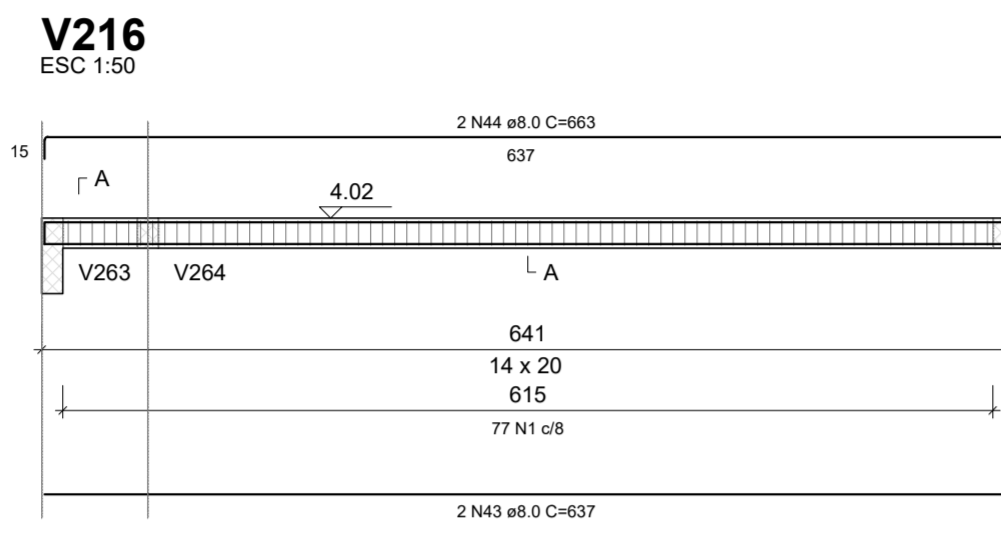
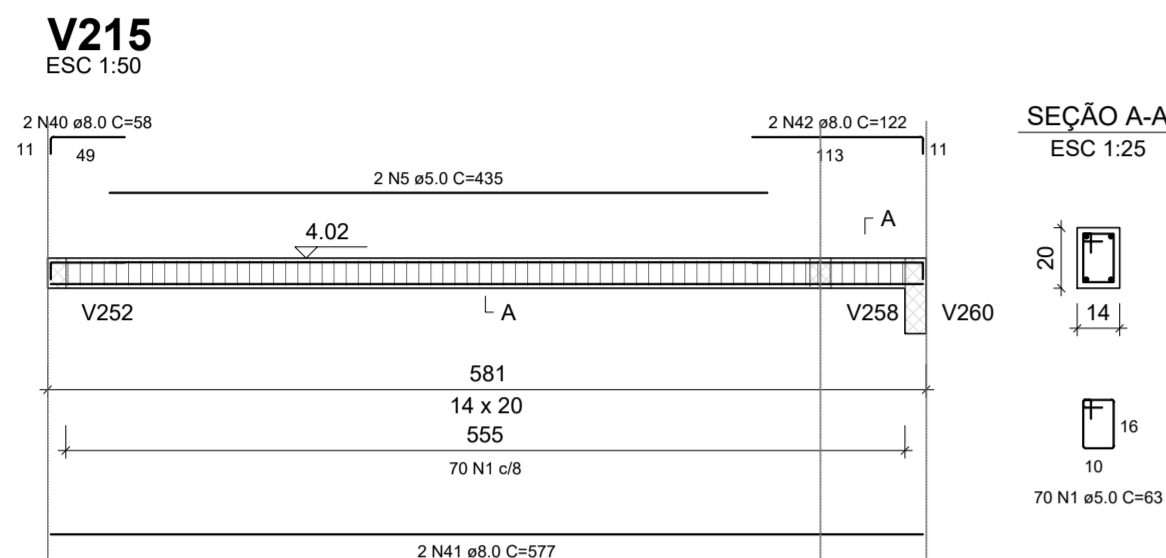
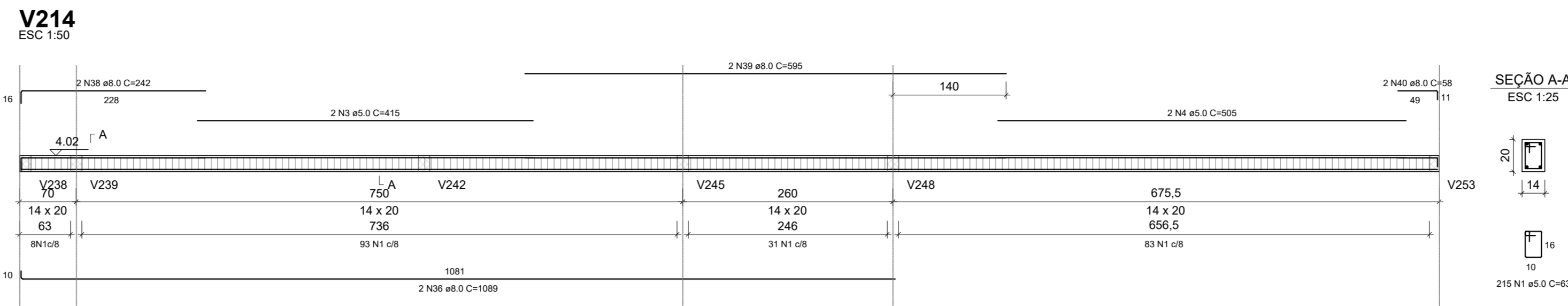
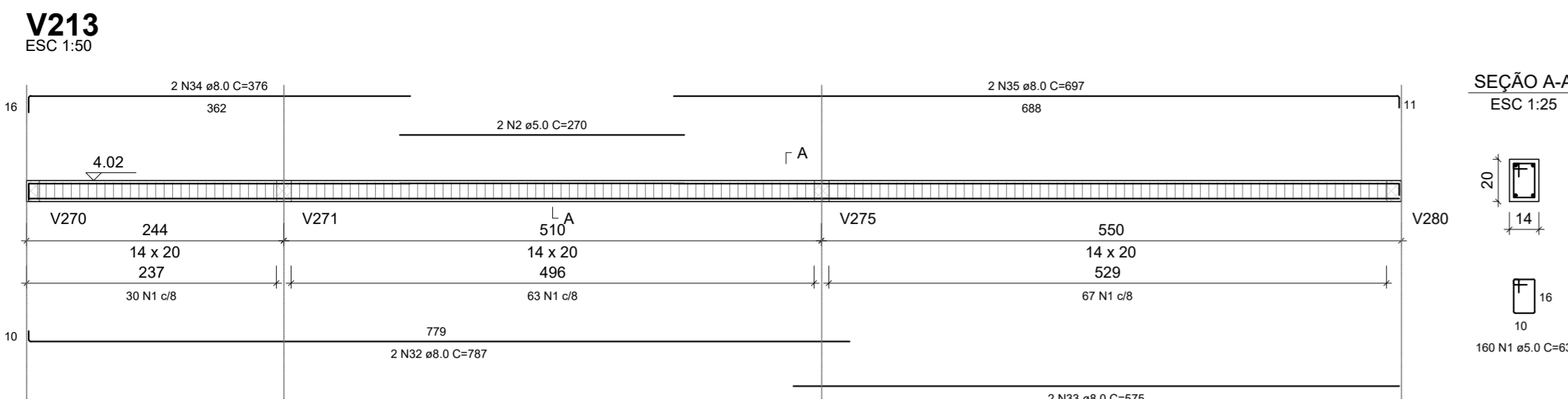


PROJETO ESTRUTURAL - CONSTRUÇÃO DA UBS ÁRVORE GRANDE

Escala indicada



RELAÇÃO DO AÇO

AÇO	N	DIAM (mm)	QUANT	C.UNIT (cm)	C.TOTAL (cm)
CA50	1	5.0	705	63	44415
	2	5.0	2	270	540
	3	5.0	2	415	830
	4	5.0	2	505	1010
	5	5.0	2	435	870
	6	5.0	2	392	784
	7	5.0	4	438	1752
	8	5.0	300	143	42900
	9	5.0	2	395	790
	10	5.0	2	440	880
	11	5.0	76	123	9348
	12	5.0	2	323	646
	13	5.0	2	303	606
	14	5.0	2	275	550
	15	5.0	2	170	340
	16	5.0	33	153	5049
	17	5.0	2	435	870
	18	5.0	2	363	726
	19	5.0	2	398	796
	20	5.0	2	323	646
	21	5.0	2	295	590
	22	6.3	6	1031	6186
	23	6.3	6	695	4170
	24	6.3	3	100	300
	25	6.3	6	647	3882
	26	6.3	10	102	1020
	27	6.3	18	1186	21528
	28	6.3	12	87	1044
	29	6.3	4	68	272
	30	6.3	2	689	4134
	31	6.3	6	230	1380
	32	8.0	2	787	1574
	33	8.0	2	373	746
	34	8.0	2	376	752
	35	8.0	2	697	1394
	36	8.0	2	1089	2178
	37	8.0	2	677	1354
	38	8.0	2	242	484
	39	8.0	2	595	1190
	40	8.0	4	59	232
	41	8.0	4	577	1154
	42	8.0	2	122	244
	43	8.0	2	637	1274
	44	8.0	2	663	1326
	45	8.0	2	613	1226
	46	8.0	2	701	1402
	47	8.0	2	440	880
	48	8.0	2	69	138
	49	8.0	2	119	238
	50	8.0	6	79	474
	51	8.0	1	218	218
	52	8.0	2	1028	2056
	53	8.0	1	317	317
	54	8.0	1	320	320
	55	8.0	2	750	1500
	56	8.0	1	204	204
	57	10.0	2	288	576
	58	10.0	4	124	496
	59	10.0	2	210	420
	60	10.0	2	145	290
	61	10.0	4	605	2420
	62	10.0	2	114	228
	63	10.0	2	222	444
	64	10.0	2	136	272
	65	10.0	2	755	1510
	66	10.0	2	645	1290
	67	10.0	2	635	1270
	68	12.5	2	750	1500
	69	12.5	2	203	406
	70	12.5	2	701	1402
	71	12.5	2	201	402
	72	12.5	2	589	1178
	73	12.5	2	637	1274
	74	12.5	2	181	362
	75	12.5	2	475	950
	76	12.5	2	430	860
	77	12.5	2	216	432
	78	16.0	2	453	906
	79	16.0	2	668	1336
	80	16.0	2	455	910
	81	16.0	2	230	460
	82	16.0	2	710	1420

RESUMO DO AÇO

AÇO	DIAM (mm)	C. TOTAL (m)	PESO + 10% (kg)
CA50	6.3	439.2	118.2
	8.0	232.8	101
	10.0	98.6	66.9
	12.5	87.7	92.9
	16.0	51.1	88.8
CA60	5.0	1149.4	194.9
PESO TOTAL (kg)			
CA50		467.8	
CA60		194.9	

Volume de concreto (C-30) = 6.58 m³
Área de forma = 142.61 m²

REV. 00 | 26/11/21 | EMISSÃO INICIAL | DAC

REVISÃO | DATA | DESCRIÇÃO | RESP.:

CLIENTE

Prefeitura Municipal de Pouso Alegre

DAC engenharia
Rua Miguel Vianna, nº 81, Sala 12
Bairro Morro Chic
CEP: 37500-000 - Ingaçuá - MG
Tel: (35) 3623-5720
www.dacengenharia.com.br

PROJETO: GERÊNCIA DE PROJETOS: PEDRO HENRIQUE JUSTINIANO ENGº CIVIL

COORDENAÇÃO DE PROJETOS: ALOISIO CAETANO FERREIRA CREA: MG-97.132D

RESPONSÁVEL TÉCNICO: ENGº FLÁVIA CRISTINA BARBOSA CREA: MG-187.842D

PROJETO: WILLIAM BARADEL LARI

DESENHO: WILLIAM BARADEL LARI

EMPRESAMENTO: **CONSTRUÇÃO DA UBS ÁRVORE GRANDE**

ENGENHEIRO: RUA EDUARDO SOUZA GOUVEIA, B. JARDIM OLÍMPICO
POUSO ALEGRE - MINAS GERAIS

ASSUNTO: PROJETO ESTRUTURAL EM CONCRETO ARMADO
DETALHAMENTO DAS VIGAS DO PAVIMENTO COBERTURA

DISCIPLINA: **ESTRUTURAL**

FASE DO PROJETO: **EXECUTIVO**

FOLHA Nº: **17/25**

DATA INICIAL: 02/08/2521 | ESCALA: INDICADA | REVISÃO: R00 | ARQUIVO: DAC-PMPA-ARG-EST-PE-R00.DWG