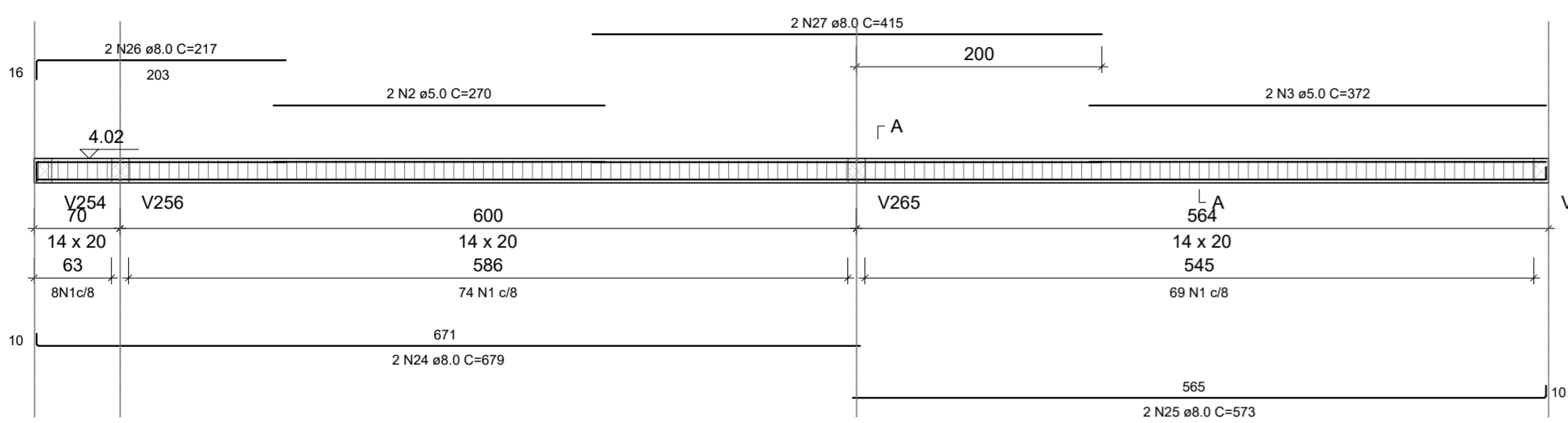


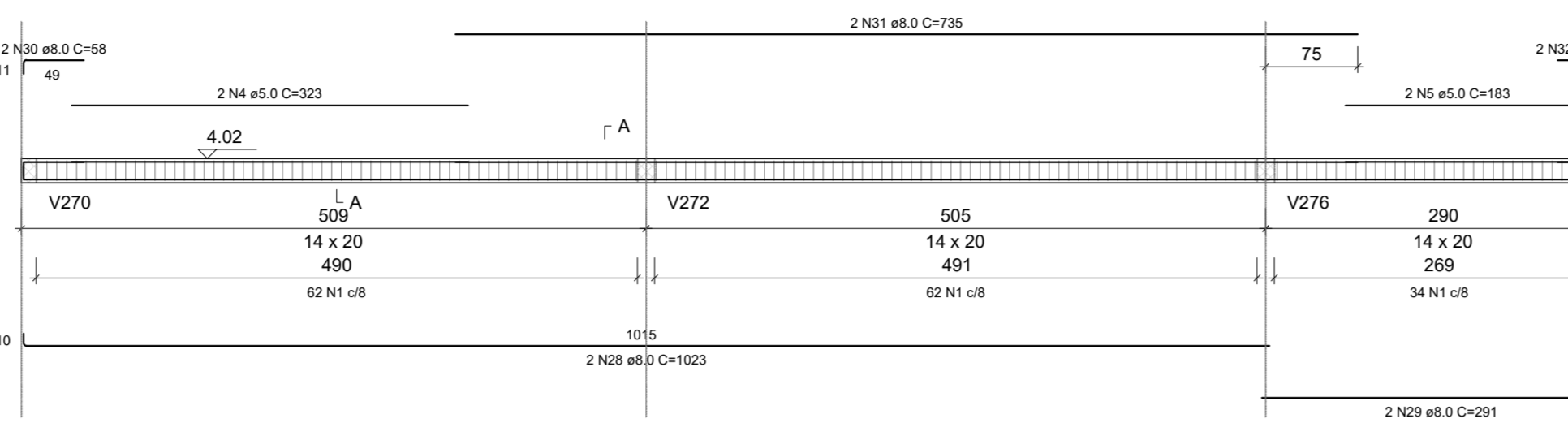
PROJETO ESTRUTURAL - CONSTRUÇÃO DA UBS ÁRVORE GRANDE

Escala indicada

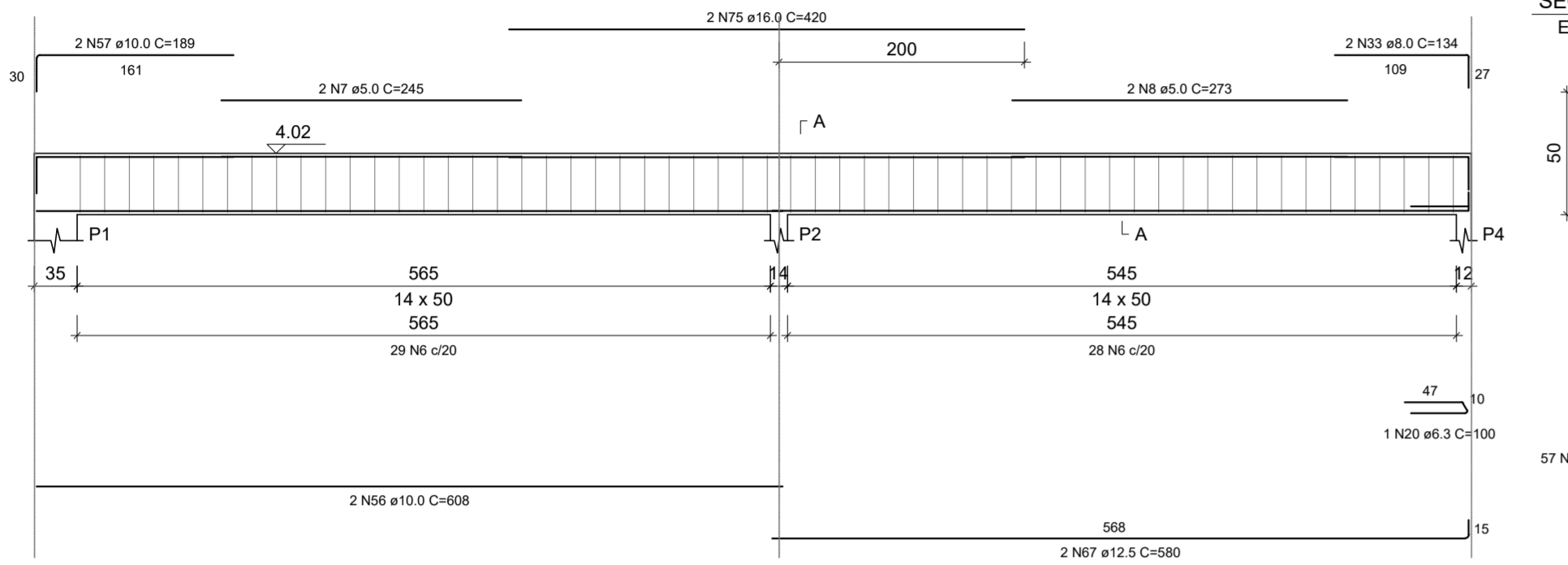
V201 ESC 1:50



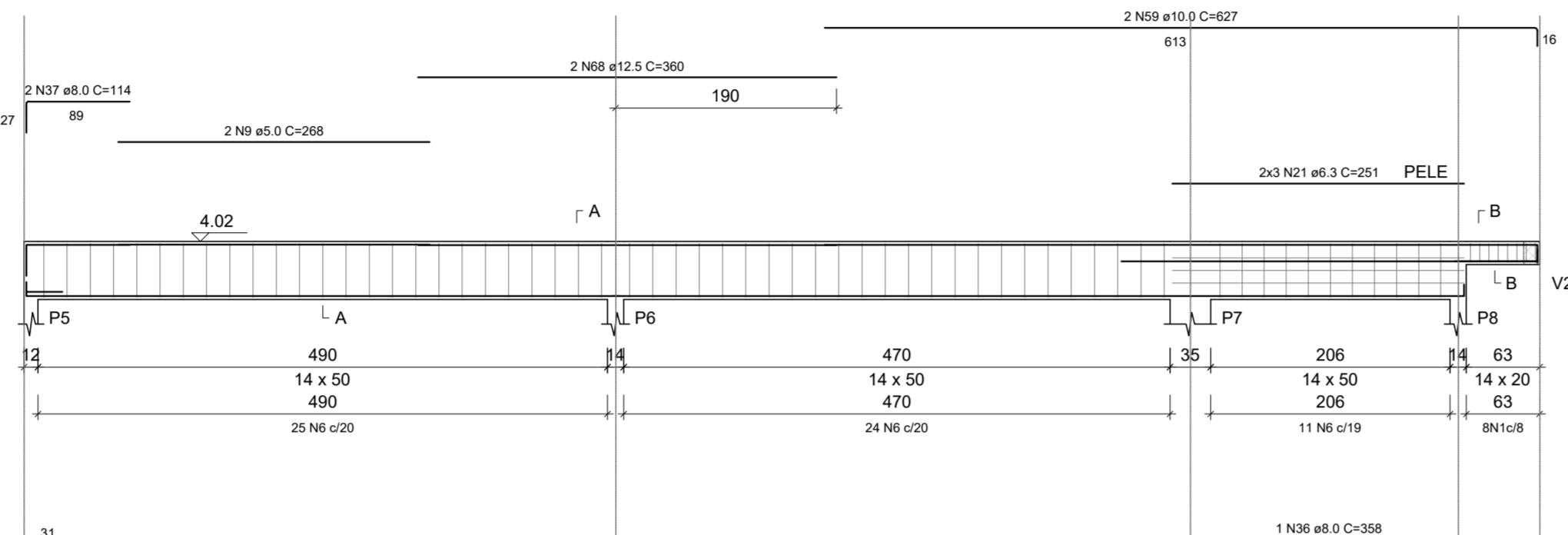
V202 ESC 1:50



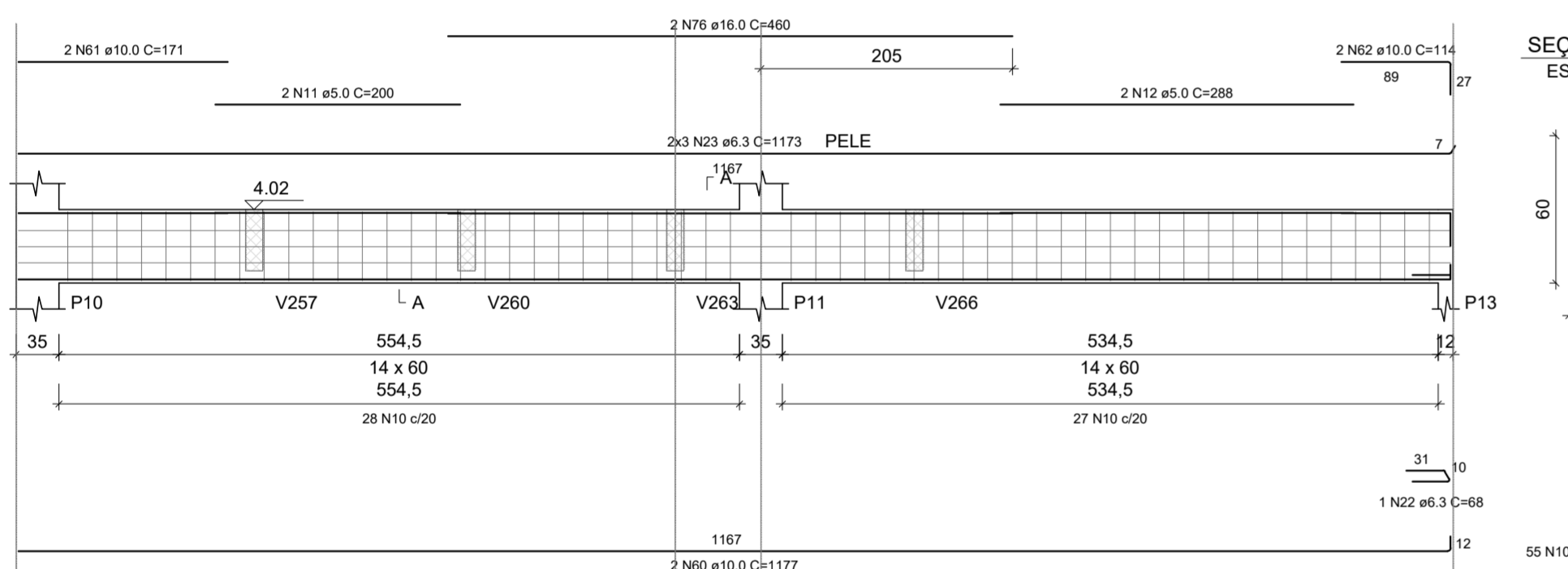
V203 ESC 1:50



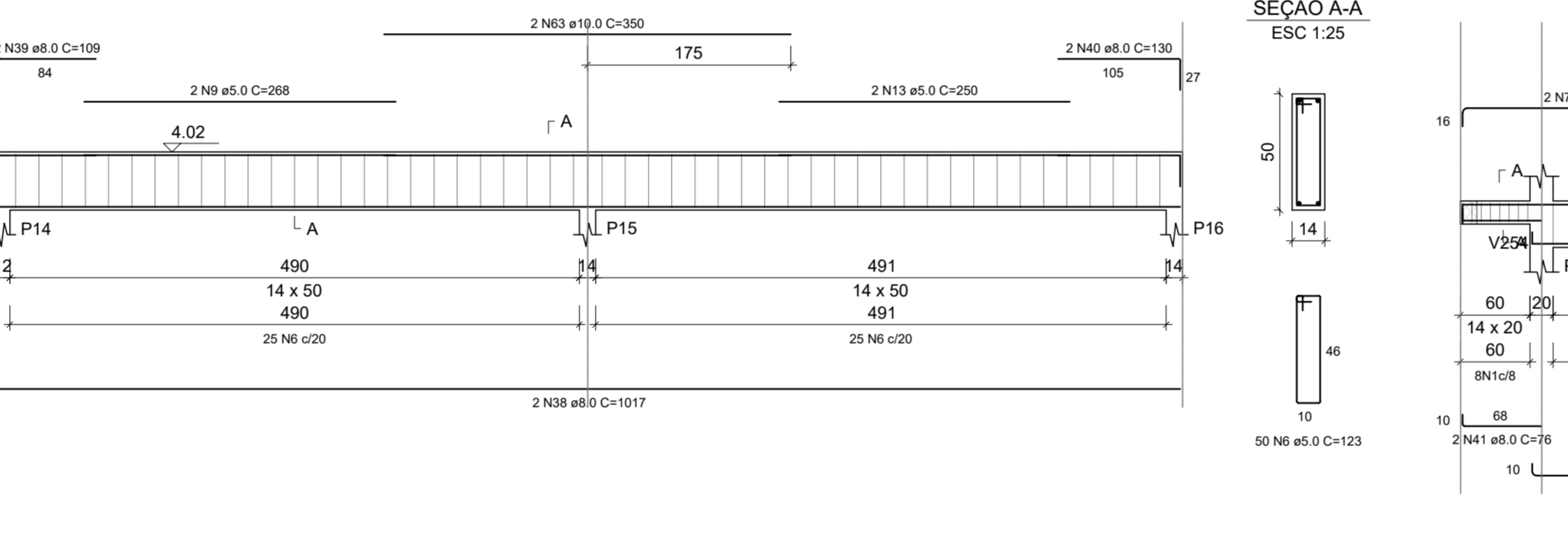
V204 ESC 1:50



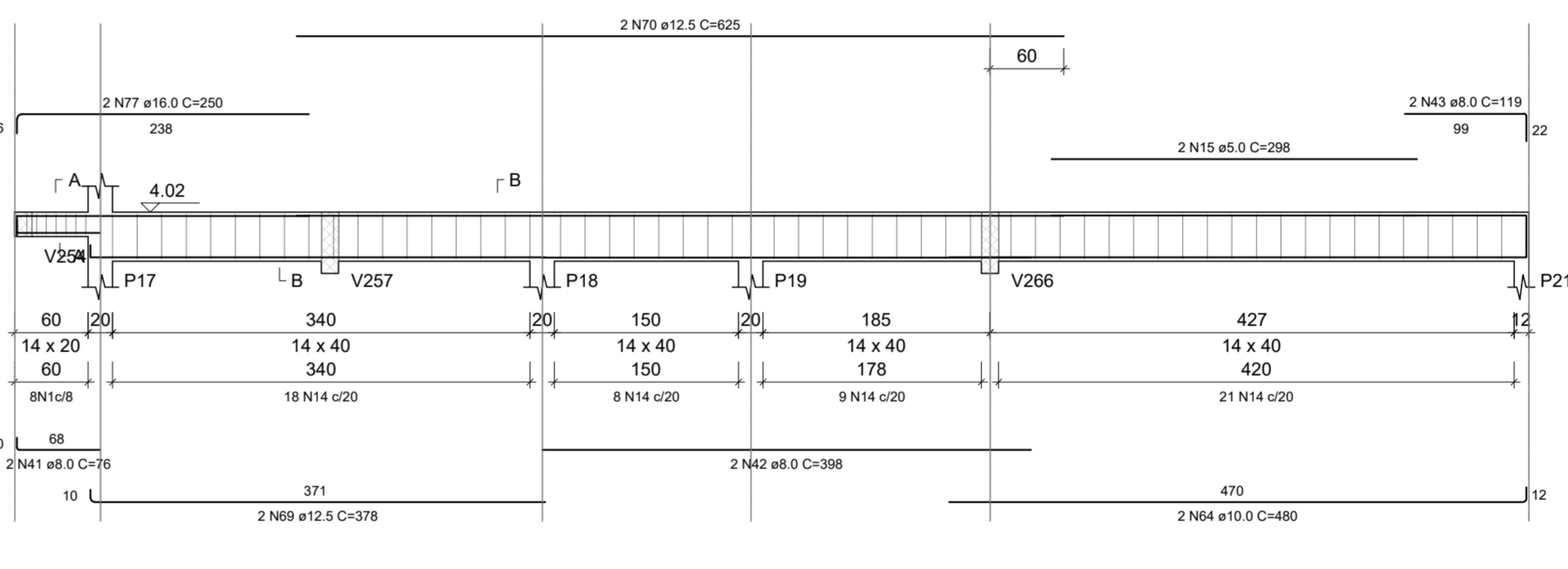
V205 ESC 1:50



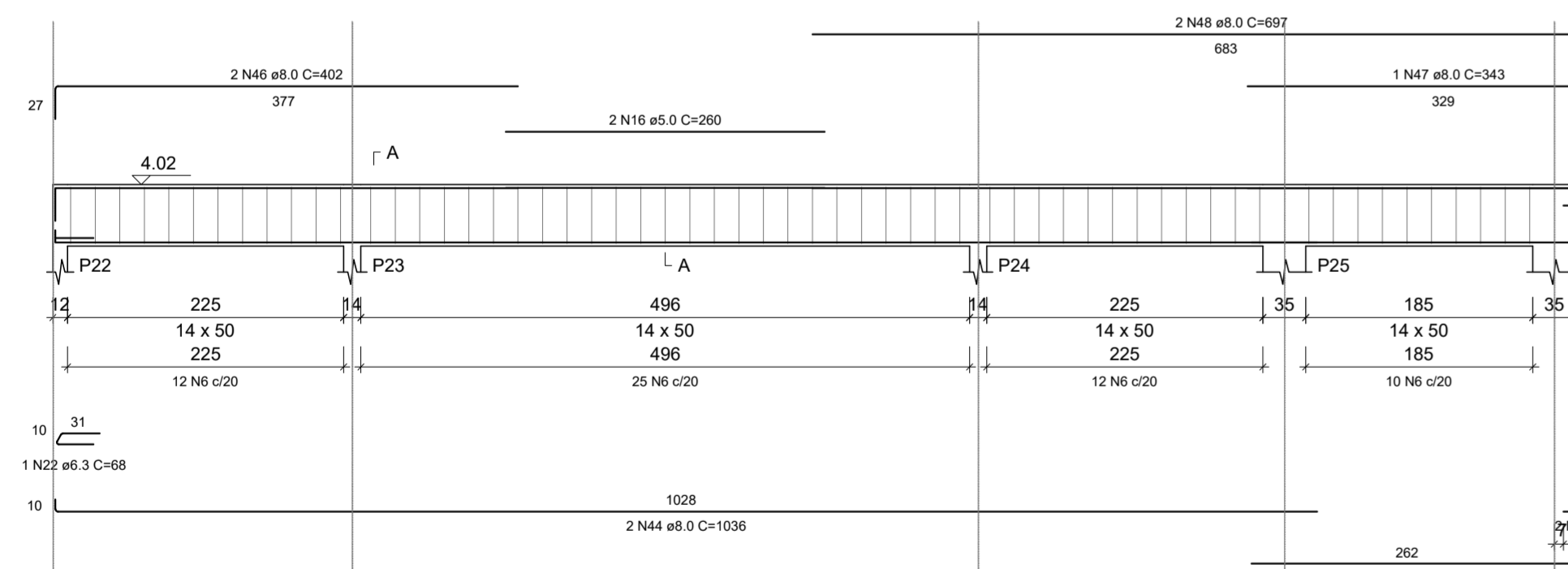
V206 ESC 1:50



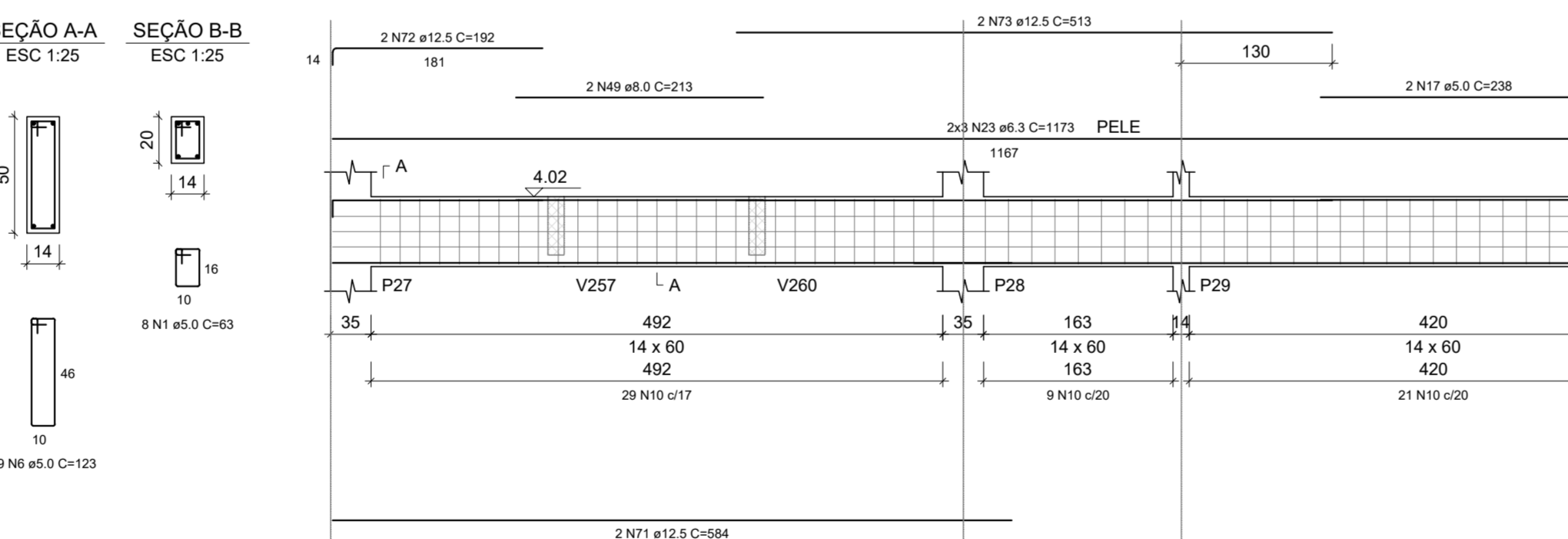
V207 ESC 1:50



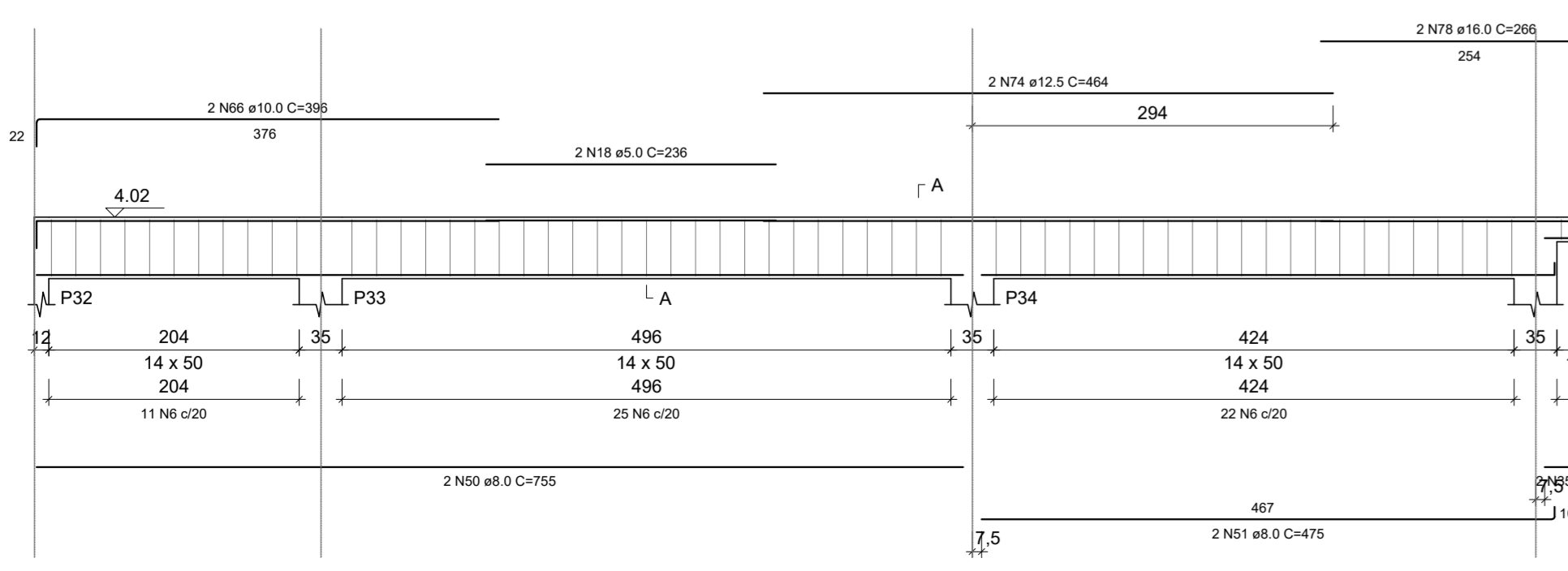
V208 ESC 1:50



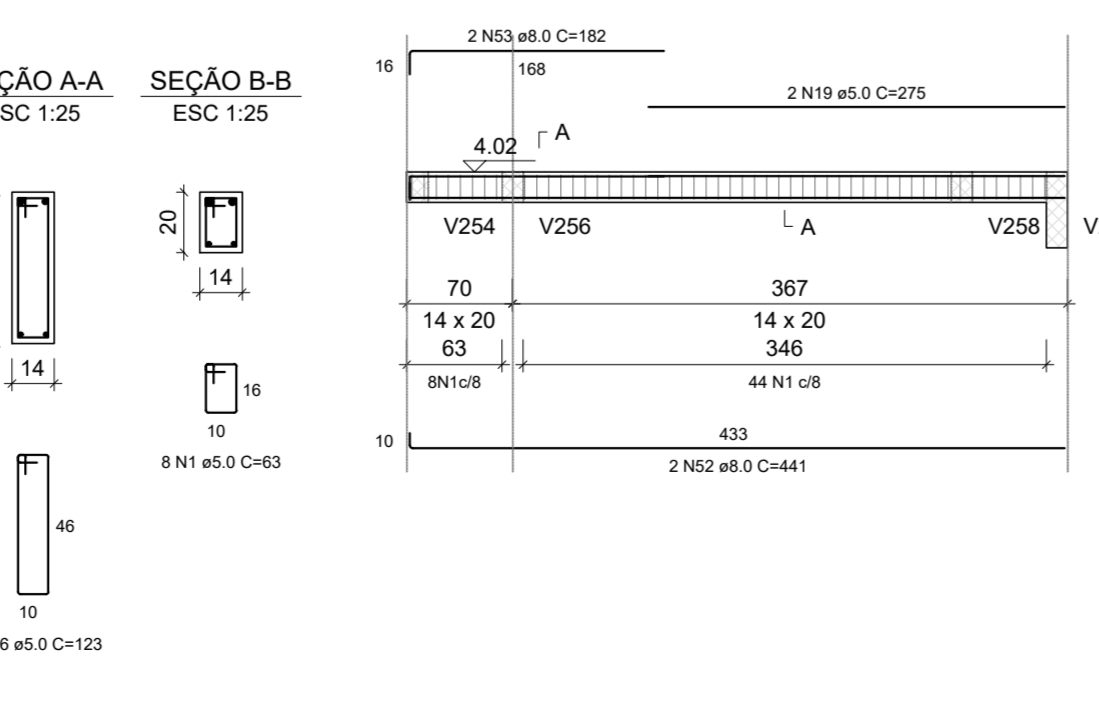
V209 ESC 1:50



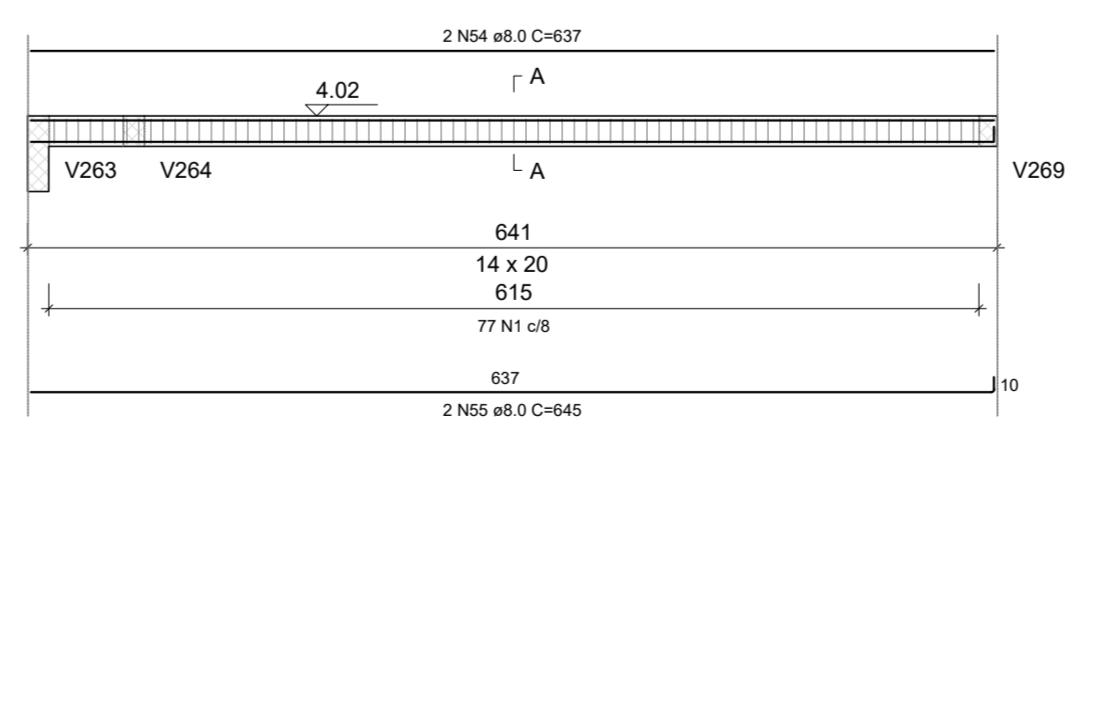
V210 ESC 1:50



V211 ESC 1:50



V212 ESC 1:50



RELAÇÃO DO AÇO

CAO	N	DIAM (mm)	QUANT	C.UNIT (cm)	C.TOTAL (cm)
CA60	1	5.0	470	29610	540
	2	5.0	2	270	744
	3	5.0	2	372	646
	4	5.0	2	323	366
	5	5.0	2	183	366
	6	5.0	284	123	34952
	7	5.0	2	245	490
	8	5.0	2	273	546
	9	5.0	4	268	1072
	10	5.0	114	143	16302
	11	5.0	2	206	400
	12	5.0	2	288	576
	13	5.0	2	250	500
	14	5.0	56	103	5768
	15	5.0	2	298	596
	16	5.0	2	260	520
	17	5.0	2	238	476
	18	5.0	2	236	472
	19	5.0	2	275	550
	20	6.3	1	100	100
	21	6.3	6	251	1506
	22	6.3	4	68	272
	23	6.3	12	1173	14076
	24	8.0	2	679	1358
	25	8.0	2	573	1146
	26	8.0	2	217	434
	27	8.0	2	415	830
	28	8.0	2	1023	2046
	29	8.0	2	291	582
	30	8.0	2	58	116
	31	8.0	2	735	1470
	32	8.0	2	59	118
	33	8.0	2	134	268
	34	8.0	2	741	1482
	35	8.0	2	79	158
	36	8.0	1	358	358
	37	8.0	2	114	228
	38	8.0	2	1017	2034
	39	8.0	2	109	218
	40	8.0	2	130	260
	41	8.0	2	76	152
	42	8.0	2	398	796
	43	8.0	2	119	238
	44	8.0	2	1036	2072
	45	8.0	2	270	540
	46	8.0	2	402	804
	47	8.0	1	343	343
	48	8.0	2	697	1394
	49	8.0	2	213	426
	50	8.0	2	755	1510
	51	8.0	2	475	950
	52	8.0	2	441	882
	53	8.0	2	182	364
	54	8.0	2	637	1274
	55	8.0	2	645	1290
	56	10.0	2	608	1216
	57	10.0	2	189	378
	58	10.0	2	520	1040
	59	10.0	2	627	1254
	60	10.0	2	1177	2354
	61	10.0	2	171	342
	62	10.0	4	114	456
	63	10.0	2	350	700
	64	10.0	2	480	960
	65	10.0	2	676	1352
	66	10.0	2	396	792
	67	12.5	2	360	720
	68	12.5	2	360	720
	69	12.5	2	376	756
	70	12.5	2	625	1250
	71	12.5	2	584	1168
	72	12.5	2	192	384
	73	12.5	2	513	1026
	74	12.5	2	464	928
	75	16.0	2	420	840
	76	16.0	2	460	920
	77	16.0	2	250	500
	78	16.0	2	266	532

RESUMO DO AÇO

CAO	DIAM (mm)	C.TOTAL (m)	PESO + 10% (kg)
CA50	6.3	155.5	42.9
	8.0	264.6	114.8
	10.0	108.4	75.5
	12.5	73.9	76.3
	16.0	27.9	48.5
	5.0	951.1	161.3
PESO TOTAL (kg)			
CA50		358.1	
CA60		161.3	

Volume de concreto (C-30) = 7.83 m³  
Área de forma = 130.43 m²

Rev. 00 | 26/11/21 | EMISSÃO INICIAL | DAC

REVISÃO | DATA | DESCRIÇÃO | RESP.:

CLIENTE

Prefeitura Municipal de Pouso Alegre

PROJETO

DAC Engenharia

Rua Miguel Vianna, nº 81, Sala 12  
Bairro Morro Chic  
CEP: 37500-000 - Ingaípe / MG  
Tel: (35) 3623-5720  
www.dacengenharia.com.br

GERÊNCIA DE PROJETOS: PEDRO HENRIQUE JUSTINIANO ENG. CIVIL

COORDENAÇÃO DE PROJETOS: ALOISIO CAETANO FERREIRA CREA: MG-97.132D

RESPONSÁVEL TÉCNICO: ENOJ. FLÁVIA CRISTINA BARBOSA CREA: MG-187.842D

PROJETO: WILLIAM BARADEL LARI

DESENHO: WILLIAM BARADEL LARI

EMPRESAMENTO: CONSTRUÇÃO DA UBS ÁRVORE GRANDE

ENGENHEIRO: RUA EDUARDO SOUZA GOUVEIA, B. JARDIM OLÍMPICO, POUSO ALEGRE - MINAS GERAIS

ASSUNTO: PROJETO ESTRUTURAL EM CONCRETO ARMADO, DETALHAMENTO DAS VIGAS DO PAVIMENTO COBERTURA

DISCIPLINA: ESTRUTURAL

FASE DO PROJETO: EXECUTIVO

FOLHA Nº: 16/25

DATA INICIAL: 02/08/2521 | ESCALA: INDICADA | REVISÃO: R00 | ARQUIVO: DAC-MMPA-ARG-EST-PE-R00.DWG