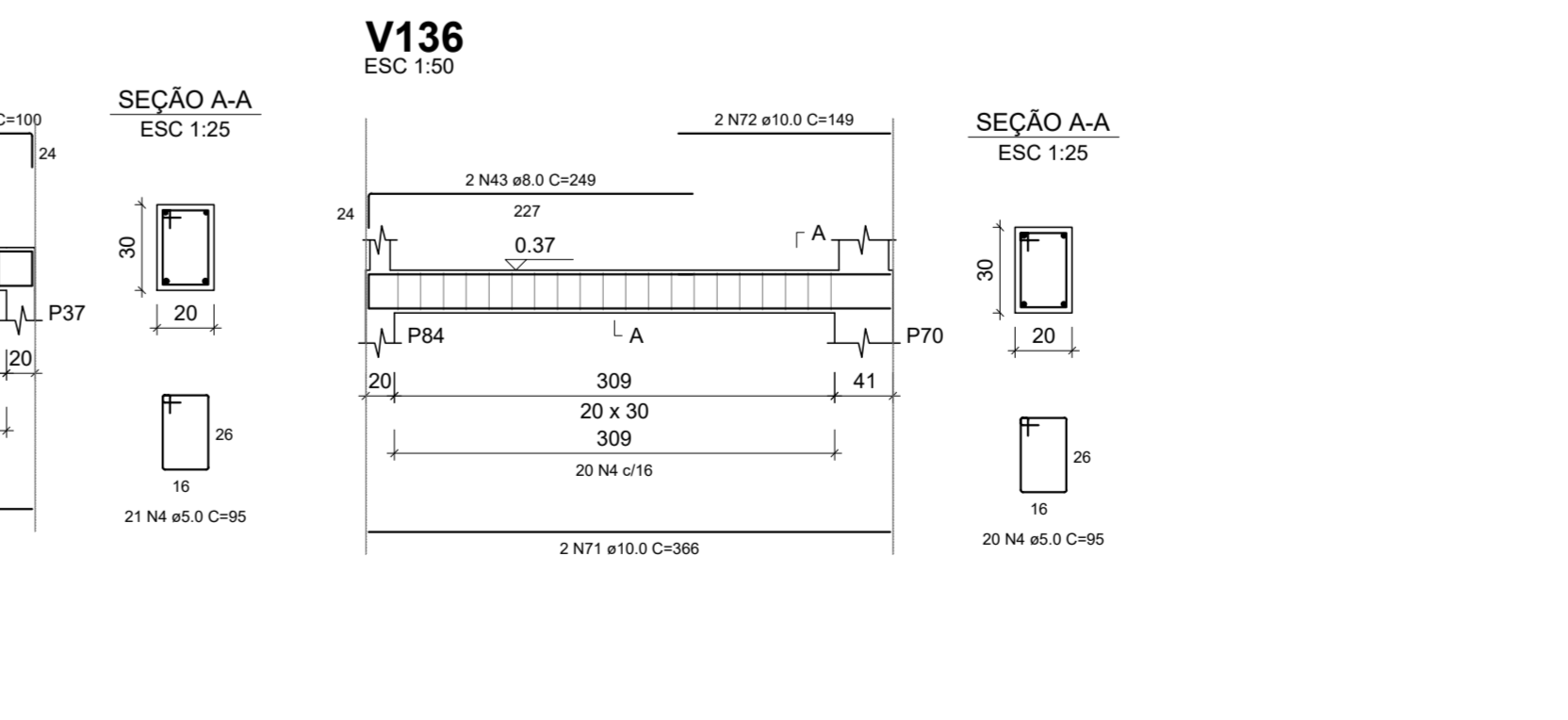
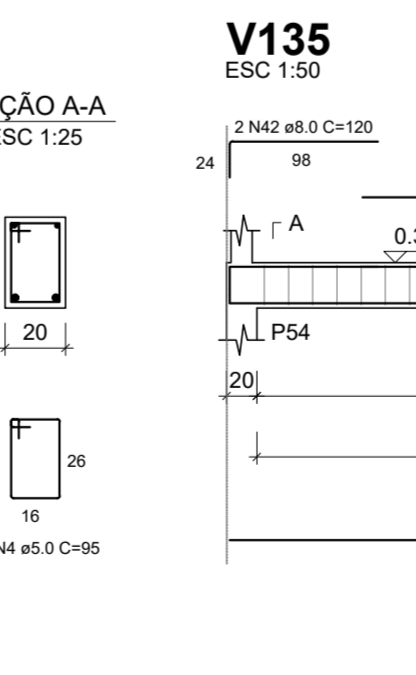
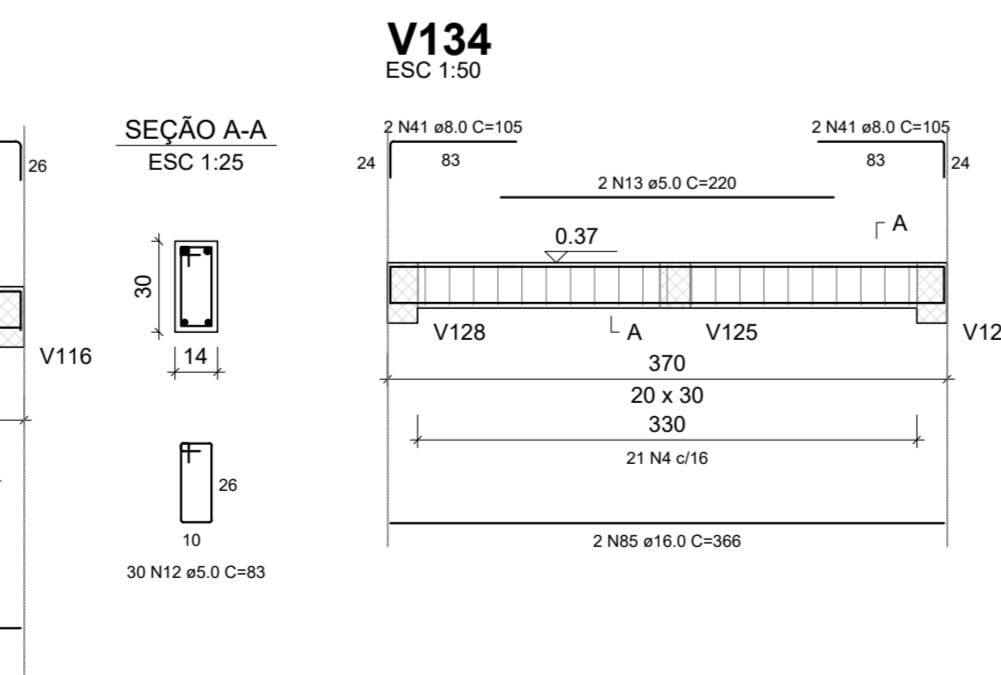
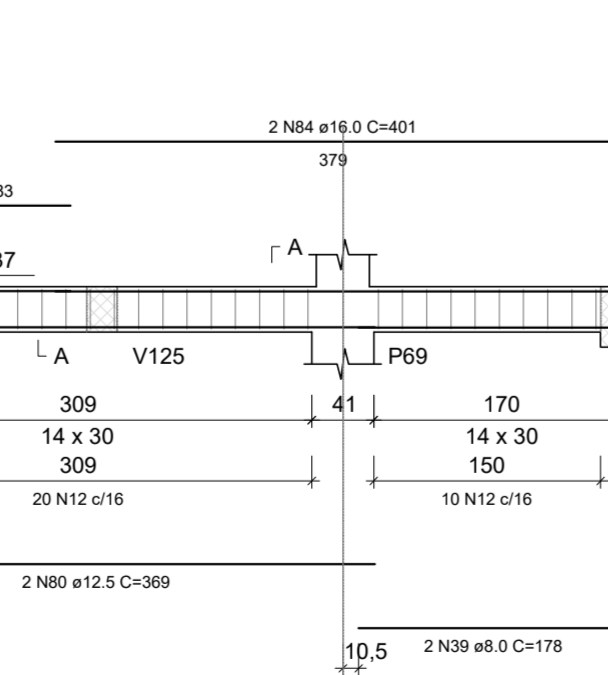
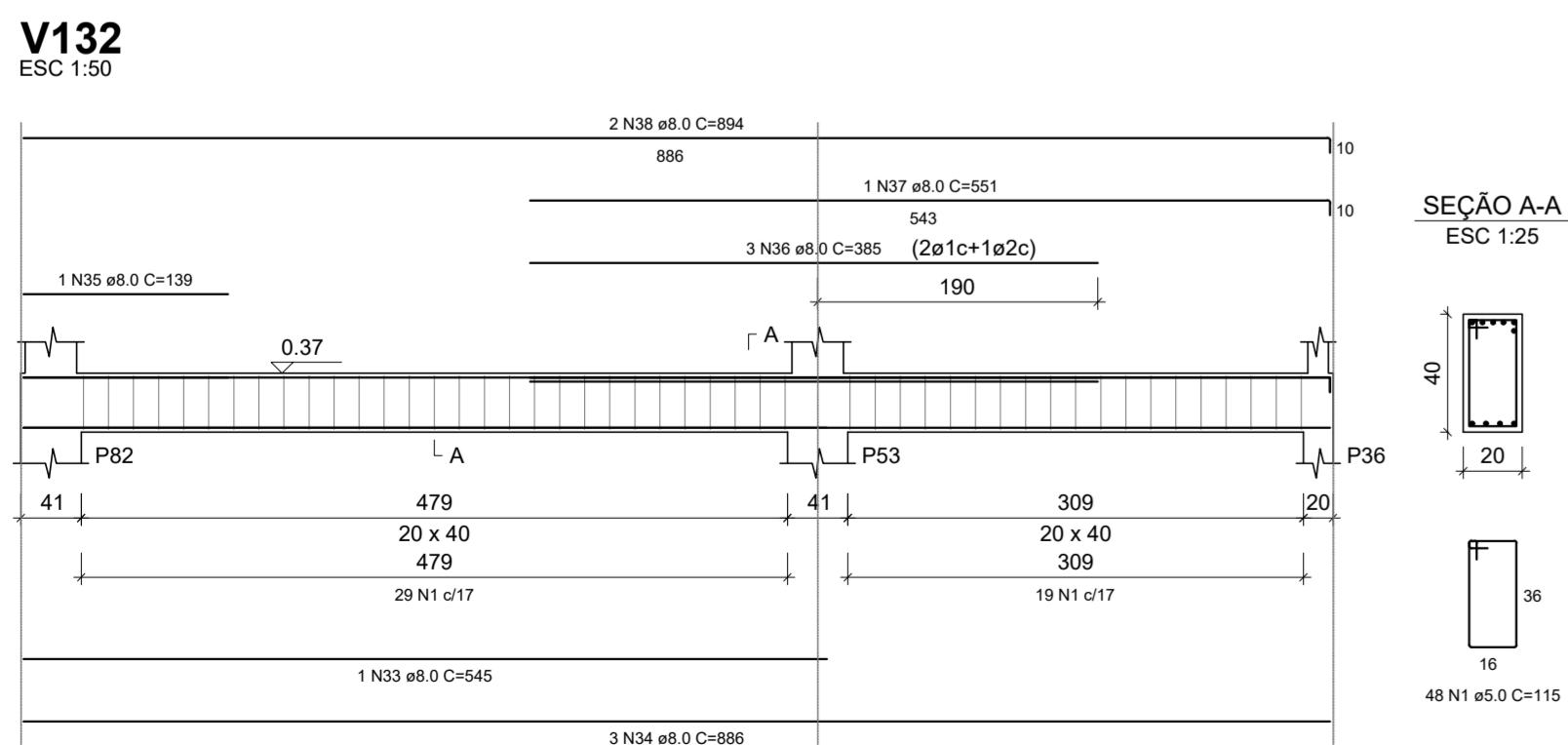
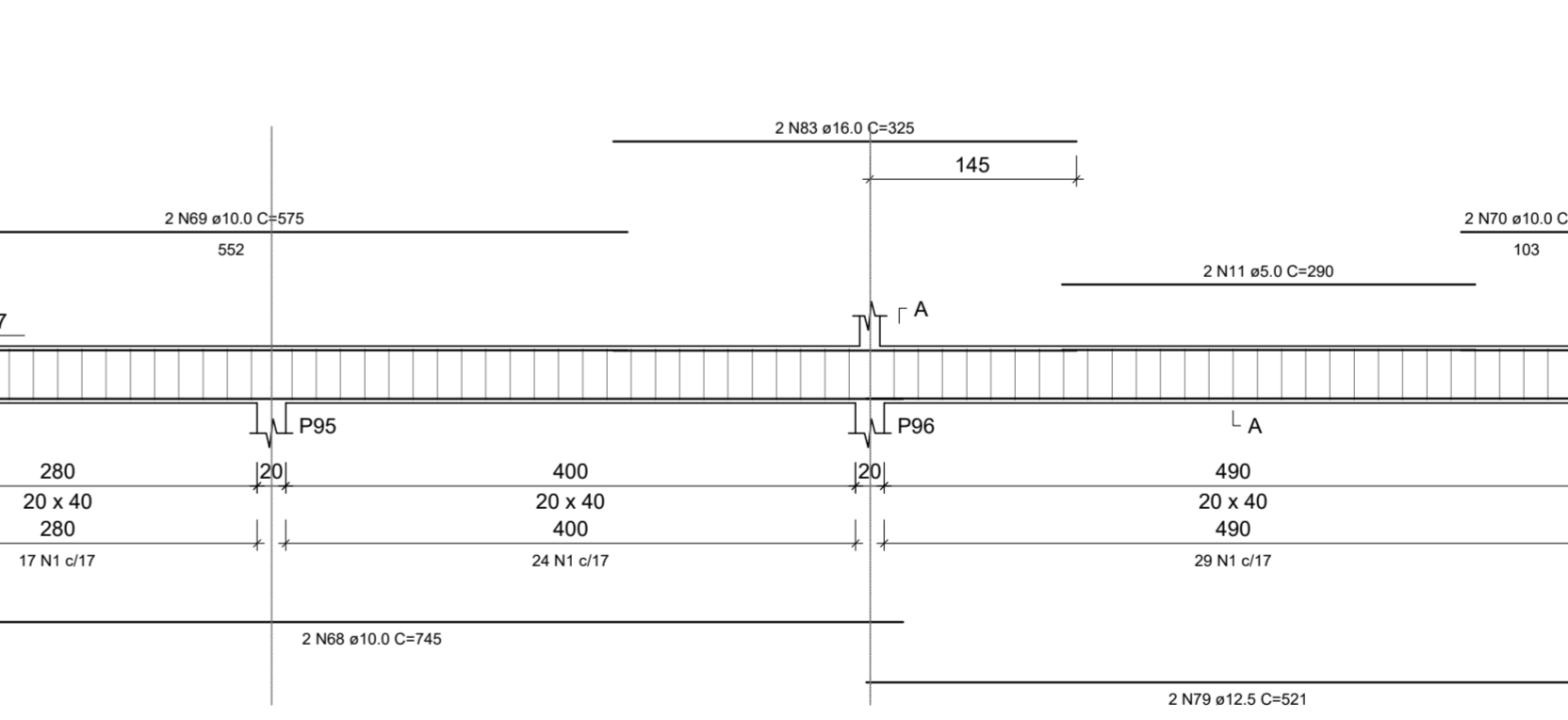
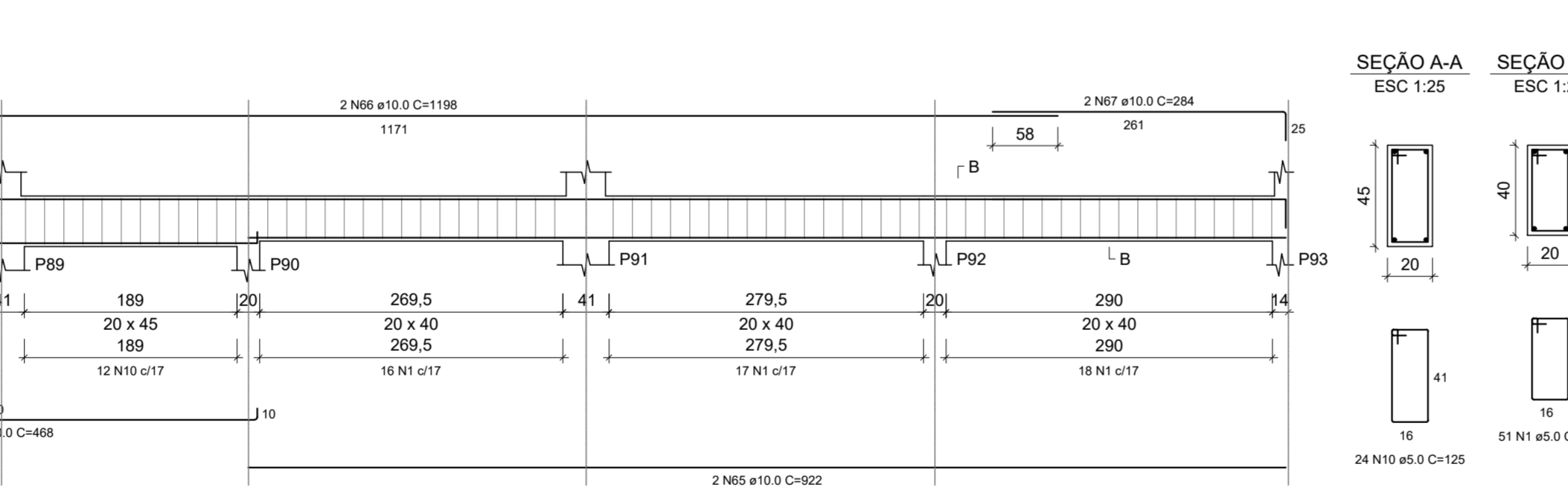
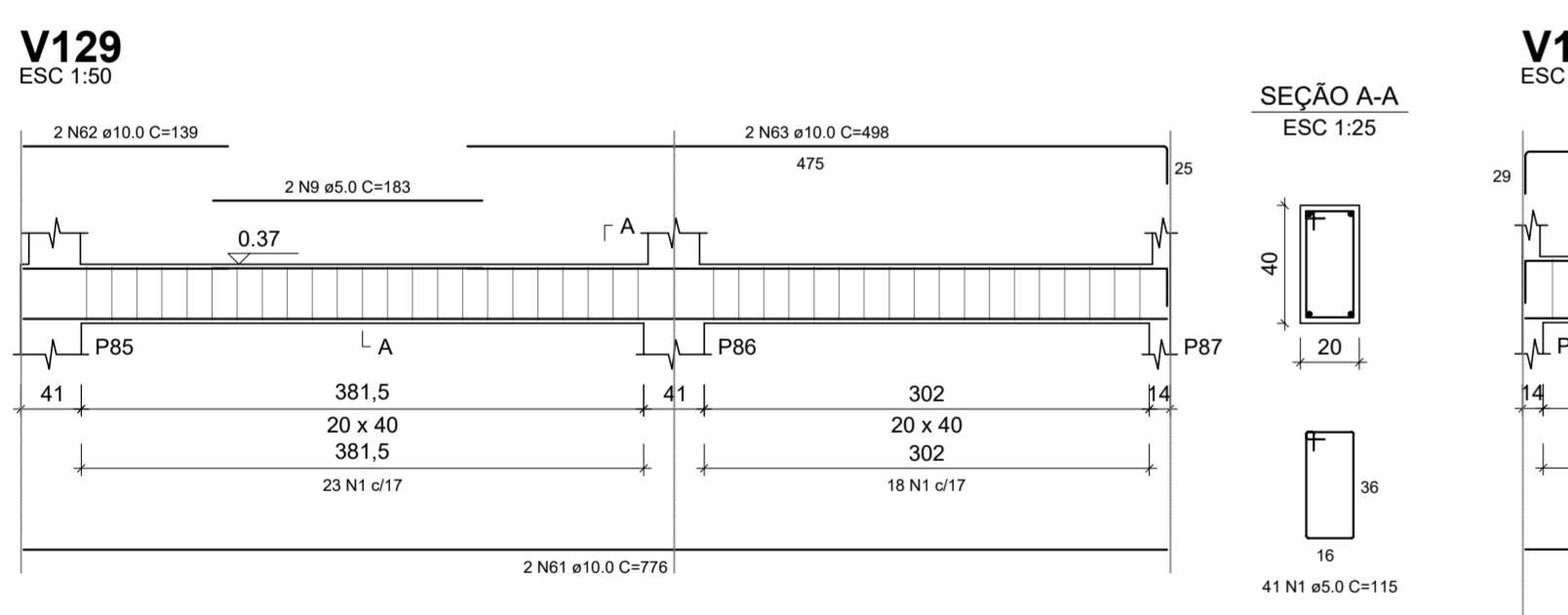
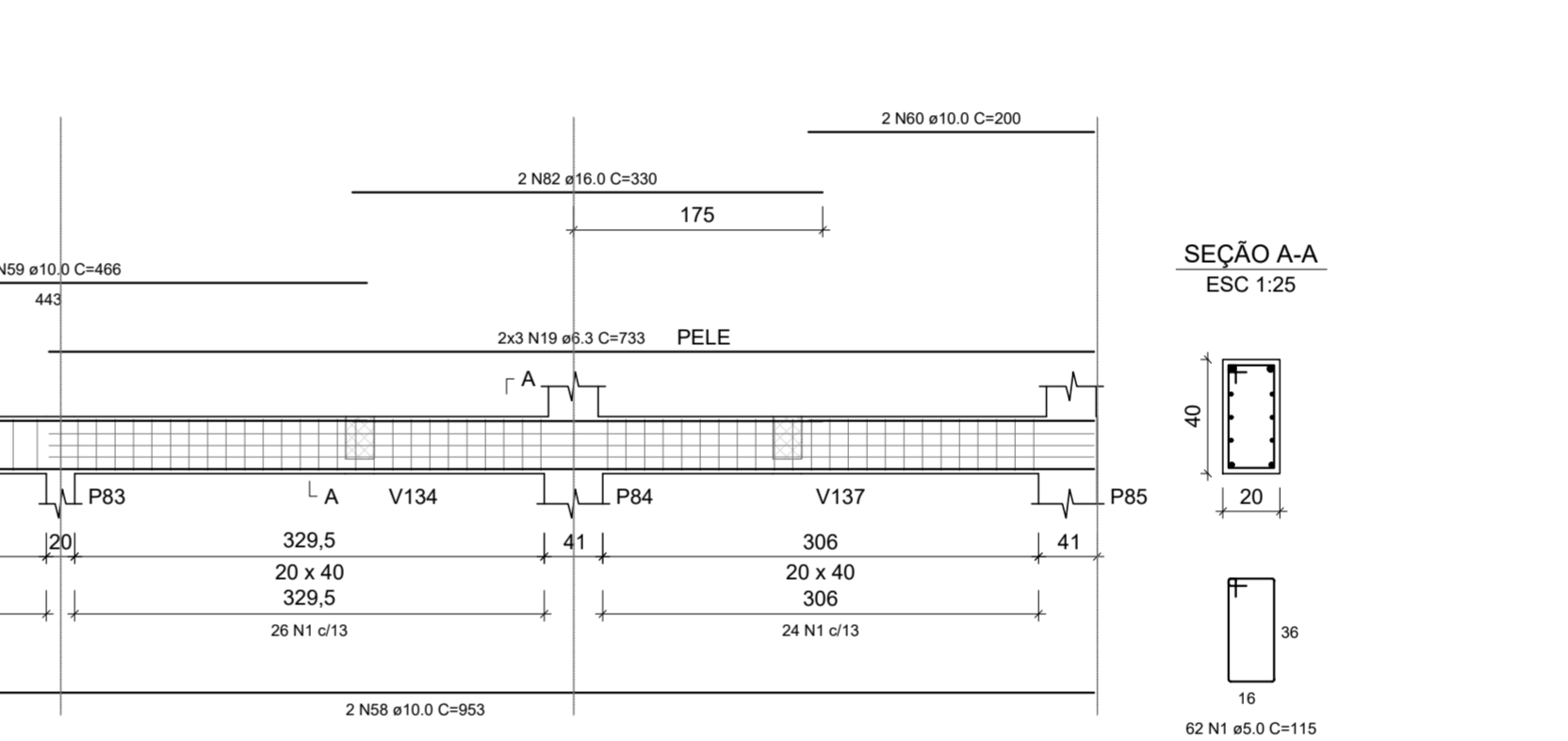
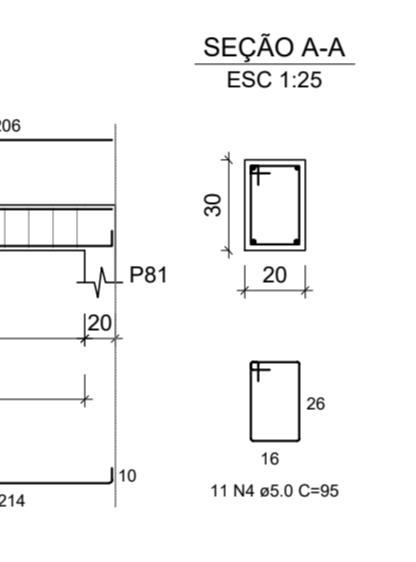
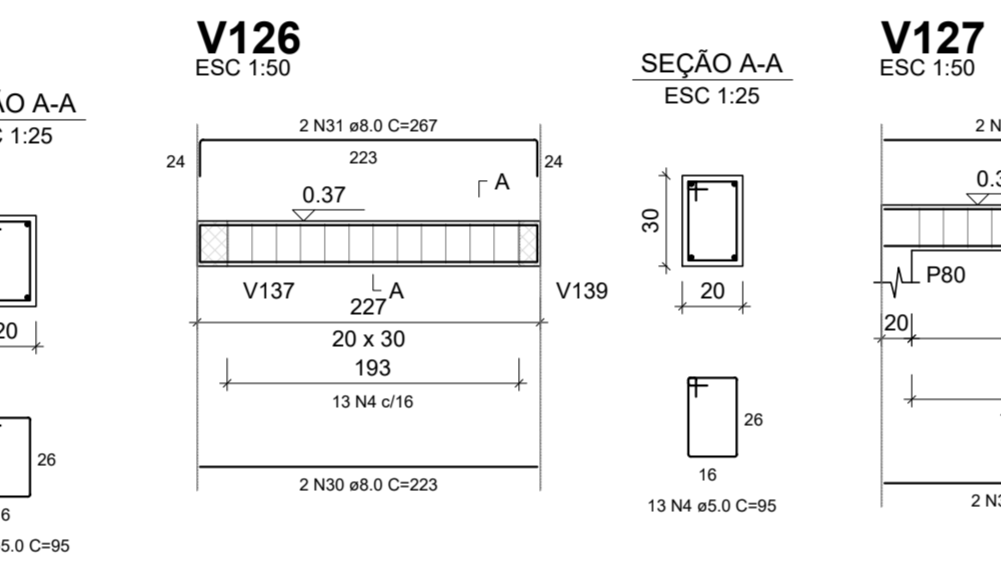
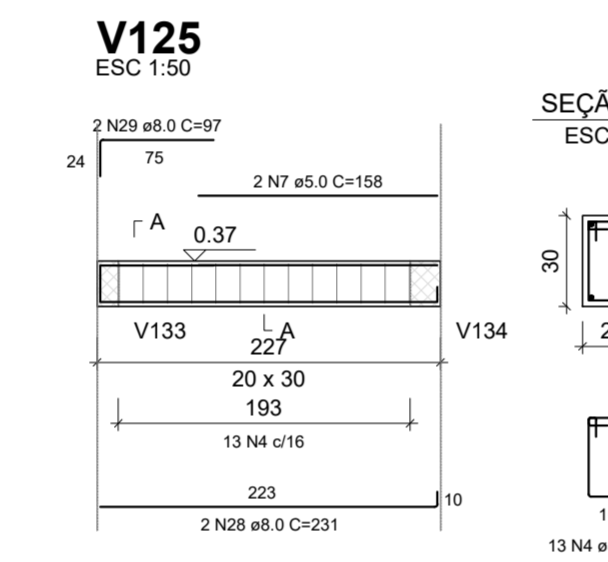
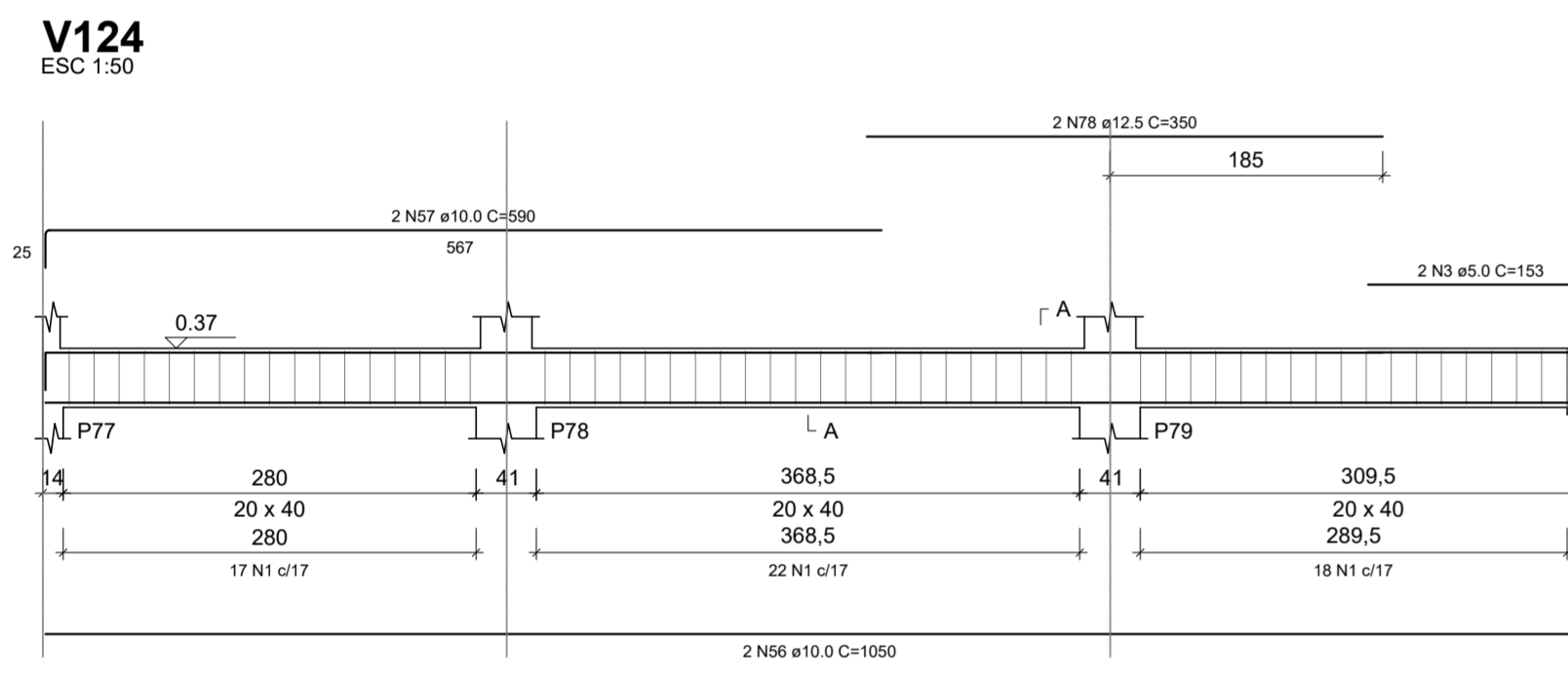
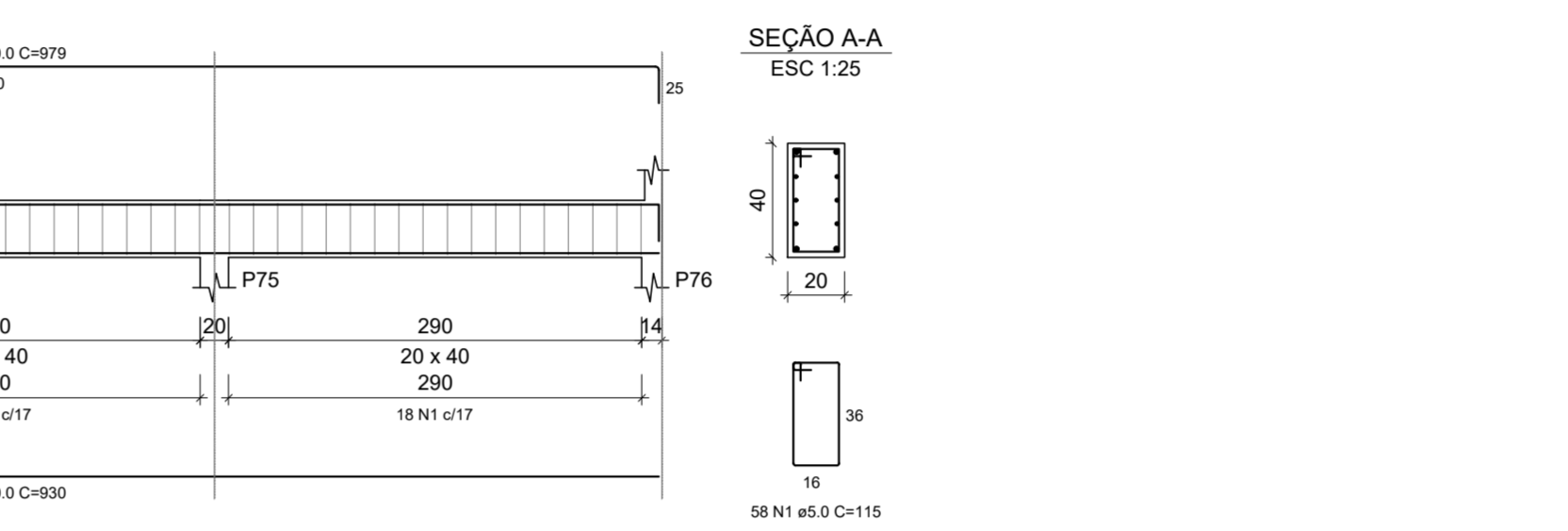
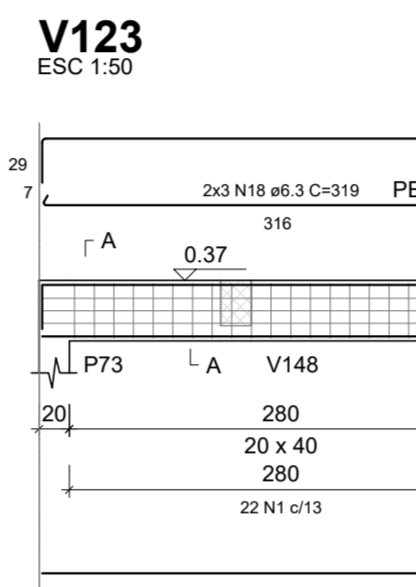
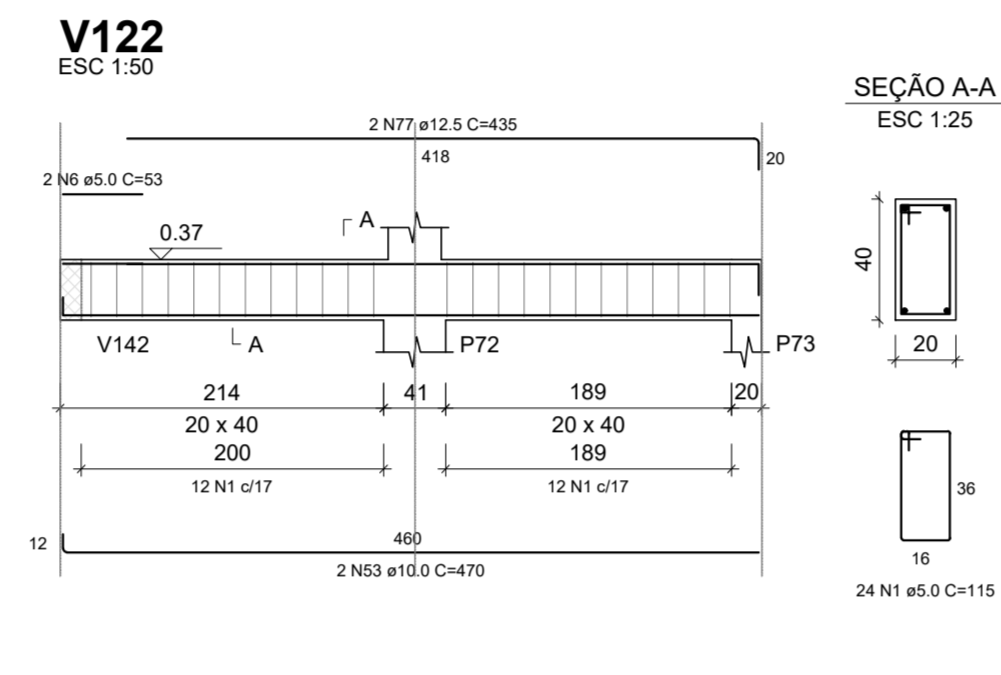
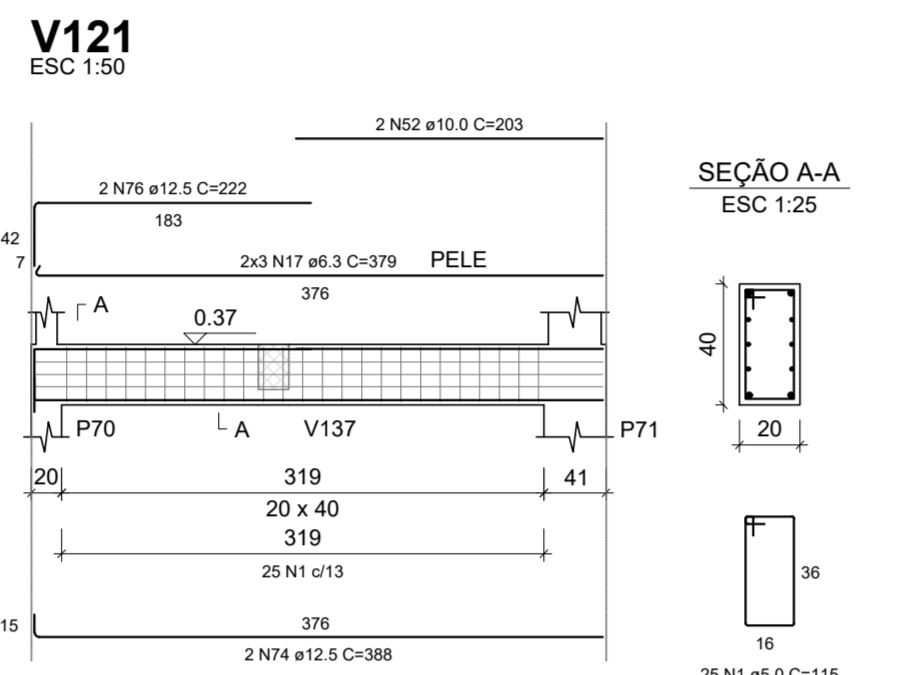
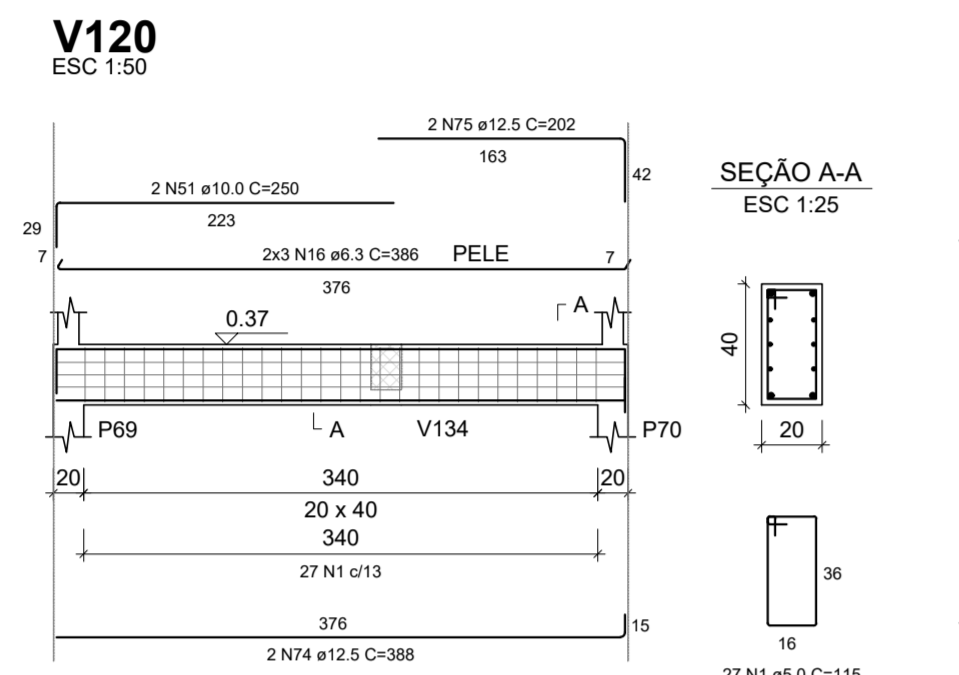
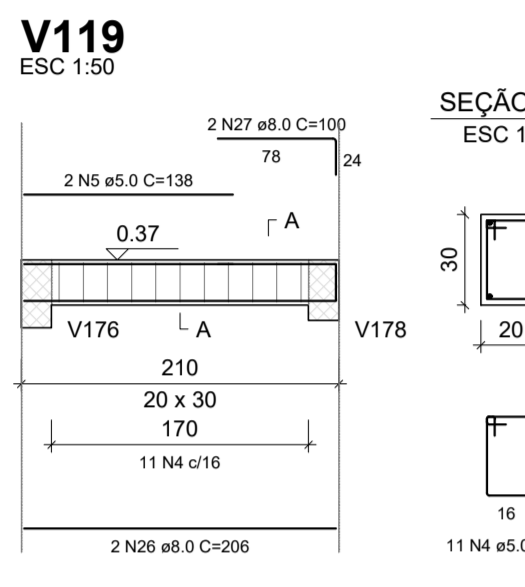
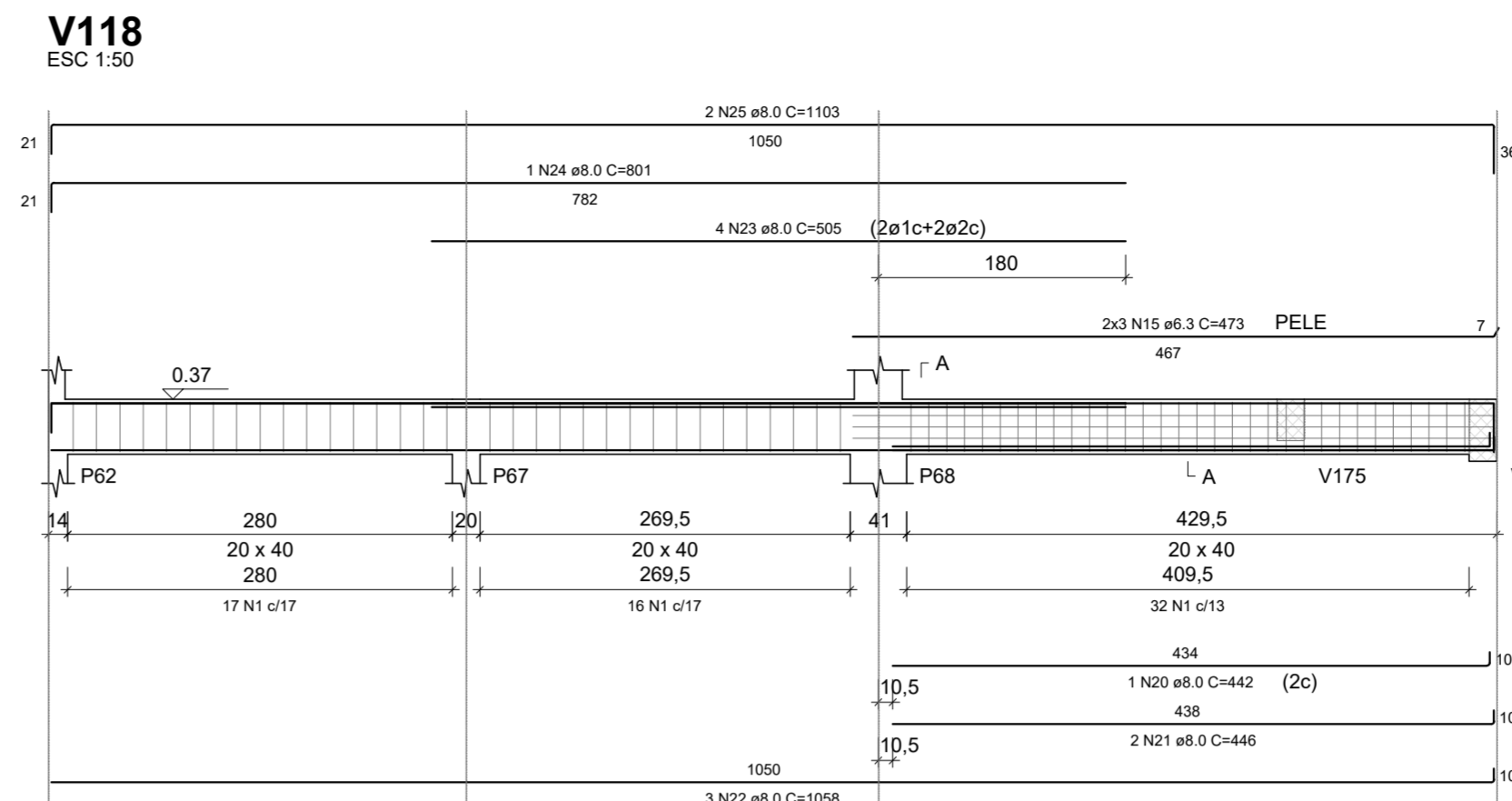
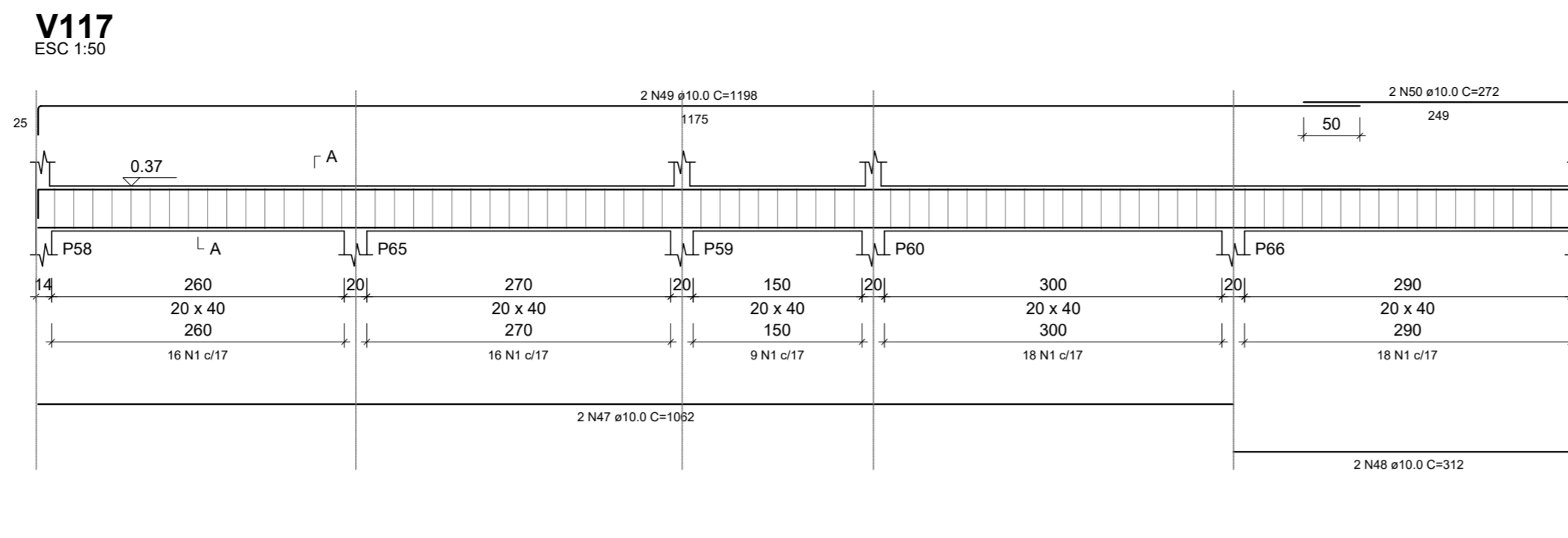
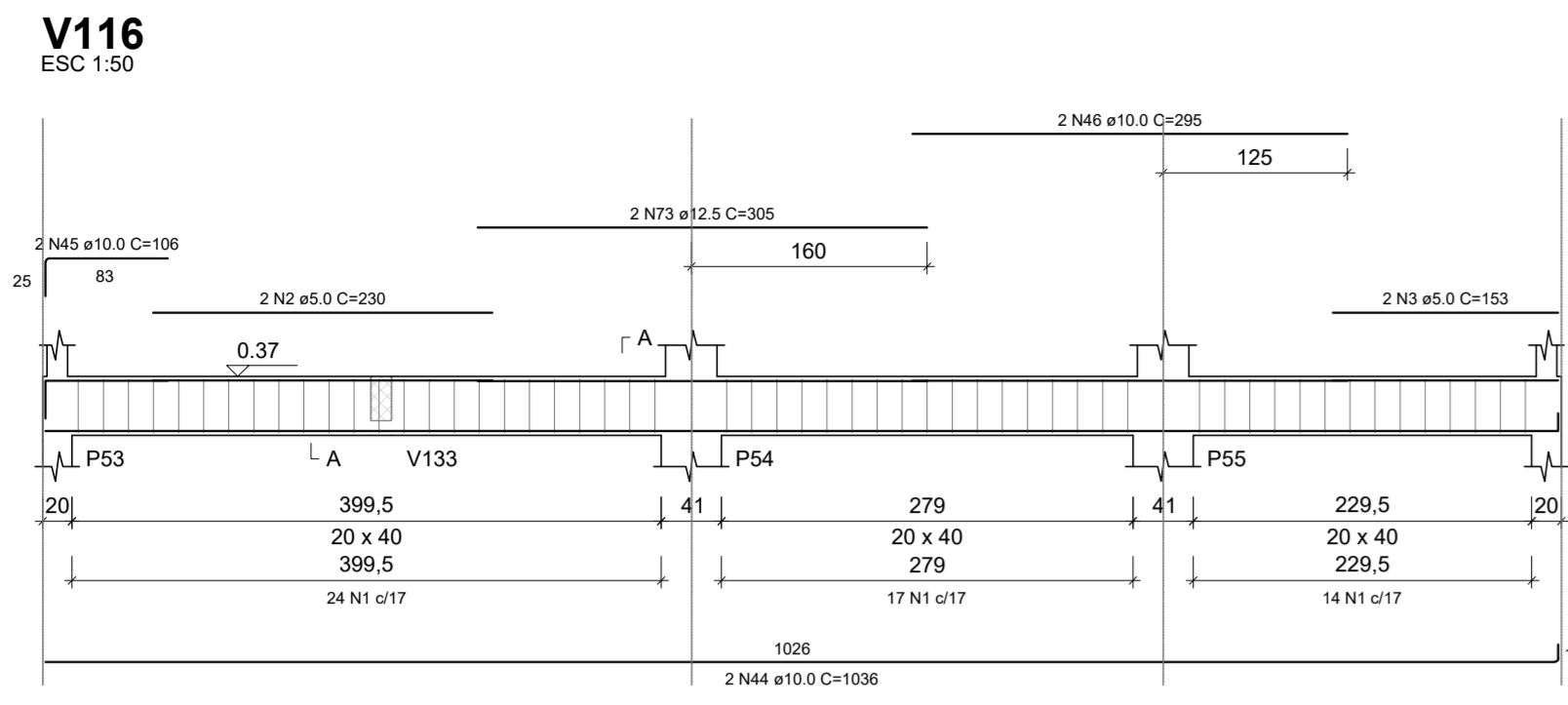


PROJETO ESTRUTURAL - CONSTRUÇÃO DA UBS ÁRVORE GRANDE

Escala indicada



RELAÇÃO DO AÇO					
AÇO	N	DIAM (mm)	QUANT	C.TOTAL (cm)	
CA80	1	5.0	660	115	
CA80	2	5.0	230	7560	
CA80	3	5.0	4	153	460
CA80	4	5.0	110	95	612
CA80	5	5.0	2	138	10450
CA80	6	5.0	2	138	276
CA80	7	5.0	2	153	106
CA80	8	5.0	2	153	318
CA80	9	5.0	2	206	412
CA80	10	5.0	24	125	368
CA80	11	5.0	2	290	580
CA80	12	5.0	30	442	2450
CA80	13	5.0	2	220	440
CA80	14	5.0	2	210	420
CA80	15	5.0	2	473	2838
CA80	16	6.3	6	386	2316
CA80	17	6.3	1	442	2274
CA80	18	6.3	6	319	1914
CA80	19	6.3	6	733	4398
CA80	20	6.3	2	442	442
CA80	21	8.0	2	446	892
CA80	22	8.0	3	1058	3174
CA80	23	8.0	1	801	2020
CA80	24	8.0	1	801	801
CA80	25	8.0	2	1103	2206
CA80	26	8.0	2	206	412
CA80	27	8.0	4	100	400
CA80	28	8.0	2	231	462
CA80	29	8.0	2	97	194
CA80	30	8.0	2	223	446
CA80	31	8.0	2	297	594
CA80	32	8.0	2	214	428
CA80	33	8.0	1	545	545
CA80	34	8.0	3	886	2658
CA80	35	8.0	1	139	139
CA80	36	8.0	3	385	1155
CA80	37	8.0	1	551	551
CA80	38	8.0	1	854	1708
CA80	39	8.0	2	178	356
CA80	40	8.0	2	183	366
CA80	41	8.0	2	105	210
CA80	42	8.0	2	120	240
CA80	43	8.0	2	249	498
CA80	44	10.0	10	1038	20772
CA80	45	10.0	2	106	212
CA80	46	10.0	2	106	212
CA80	47	10.0	2	1062	2124
CA80	48	10.0	2	312	624
CA80	49	10.0	2	1198	2396
CA80	50	10.0	2	272	544
CA80	51	10.0	2	250	500
CA80	52	10.0	2	466	932
CA80	53	10.0	2	470	940
CA80	54	10.0	2	500	1000
CA80	55	10.0	2	979	1958
CA80	56	10.0	2	1050	2100
CA80	57	10.0	2	590	1180
CA80	58	10.0	2	963	1906
CA80	59	10.0	2	466	932
CA80	60	10.0	2	400	800
CA80	61	10.0	2	776	1552
CA80	62	10.0	2	139	278
CA80	63	10.0	2	498	996
CA80	64	10.0	2	488	976
CA80	65	10.0	2	622	1244
CA80	66	10.0	2	1198	2396
CA80	67	10.0	2	284	568
CA80	68	10.0	2	745	1490
CA80	69	10.0	2	575	1150
CA80	70	10.0	2	126	252
CA80	71	10.0	2	366	732
CA80	72	10.0	2	149	298
CA80	73	12.5	2	300	600
CA80	74	12.5	4	388	1552
CA80	75	12.5	2	402	804
CA80	76	12.5	2	222	444
CA80	77	12.5	2	435	870
CA80	78	12.5	2	350	700
CA80	79	12.5	2	521	1042
CA80	80	12.5	2	369	738
CA80	81	12.5	2	366	732
CA80	82	16.0	2	330	660
CA80	83	16.0	2	325	650
CA80	84	16.0	2	401	802
CA80	85	16.0	2	366	732

RESUMO DO AÇO			
AÇO	DIAM (mm)	C.TOTAL (m)	PESO + 10% (kg)
CA50	6.3	137.4	37
CA50	8.0	211.3	91.7
CA50	10.0	332.4	225.4
CA50	12.5	70.9	75.2
CA50	16.0	28.4	49.4
CA60	5.0	958.3	162.5
PESO TOTAL (kg)			478.6
CA50			478.6
CA60			162.5

Volume de concreto (C-30) = 11.00 m³
Área de forma = 139.55 m²

REV. 00	26/11/21	EMISSÃO INICIAL	DAC
REVISÃO	DATA	DESCRIÇÃO	RESP.
CLIENTE			



DAC engenharia
Rua Miguel Vianna, nº 81, Sala 12
Bairro Morro Chic
CEP: 37500-000 - Itaipaci - MG
Tel: (35) 3623-5720
www.dacengenharia.com.br

PROJETO	GERÊNCIA DE PROJETOS PEDRO HENRIQUE JUSTIANO ENFº CIVIL
COORDENAÇÃO DE PROJETOS ALOSIO CAETANO FERRERA CREA: MG-97.132D	RESPONSÁVEL TÉCNICO ENFº FLÁVIA CRISTINA BARBOSA CREA: MG-187.842D
PROJETO WILLIAM BARADEL LARI	DESENHO WILLIAM BARADEL LARI
EMPENHAMENTO CONSTRUÇÃO DA UBS ÁRVORE GRANDE	
ENGENHEIRO RUA EDUARDO SOUZA GOUVEIA, B. JARDIM OLÍMPICO POUSO ALEGRE - MINAS GERAIS	DISCIPLINA ESTRUTURAL
ASSUNTO PROJETO ESTRUTURAL EM CONCRETO ARMADO DETALHAMENTO DAS VIGAS BALDRAME	FASE DO PROJETO EXECUTIVO
DATA INICIAL 02/08/2521	FOLHA Nº: 12/25