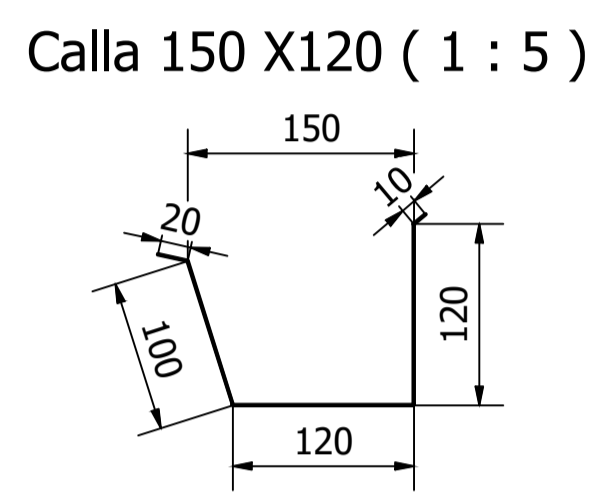
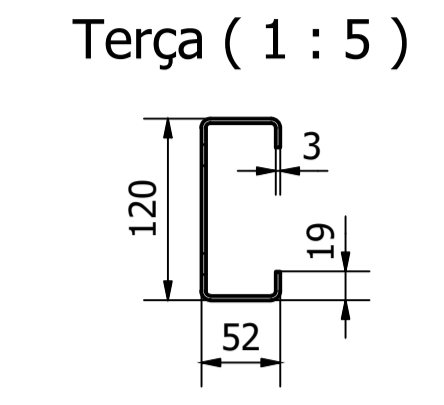
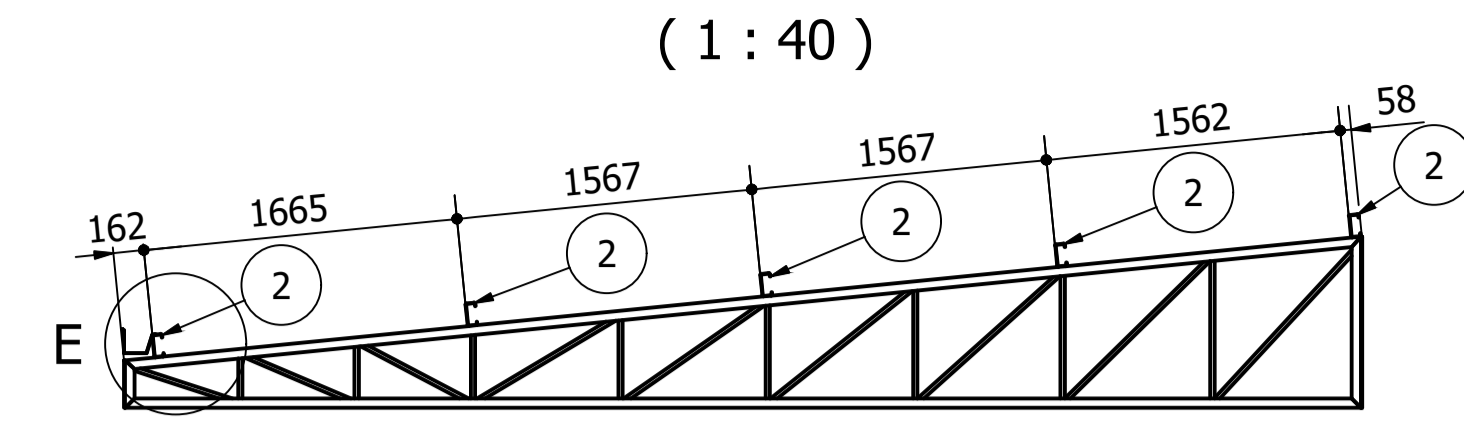
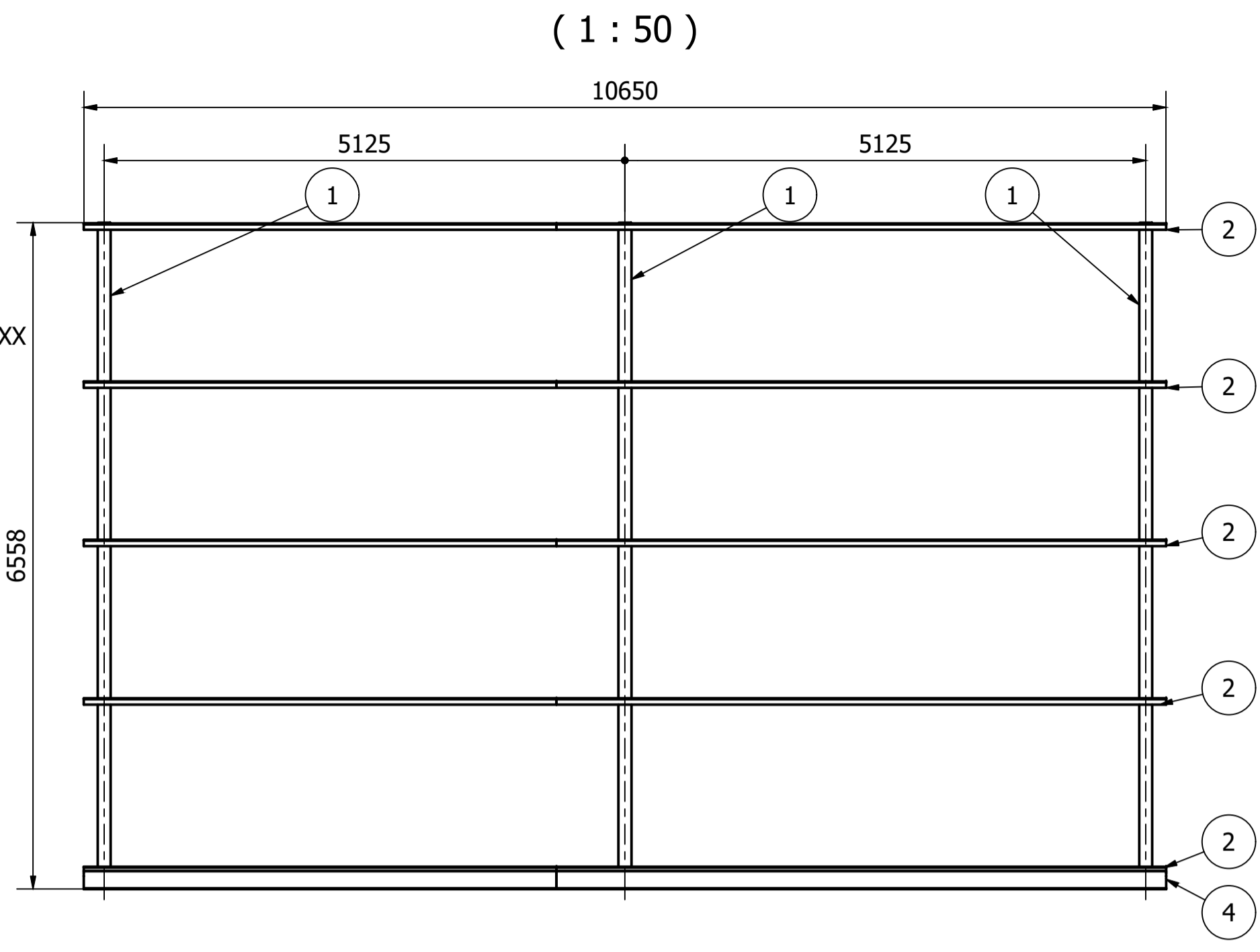
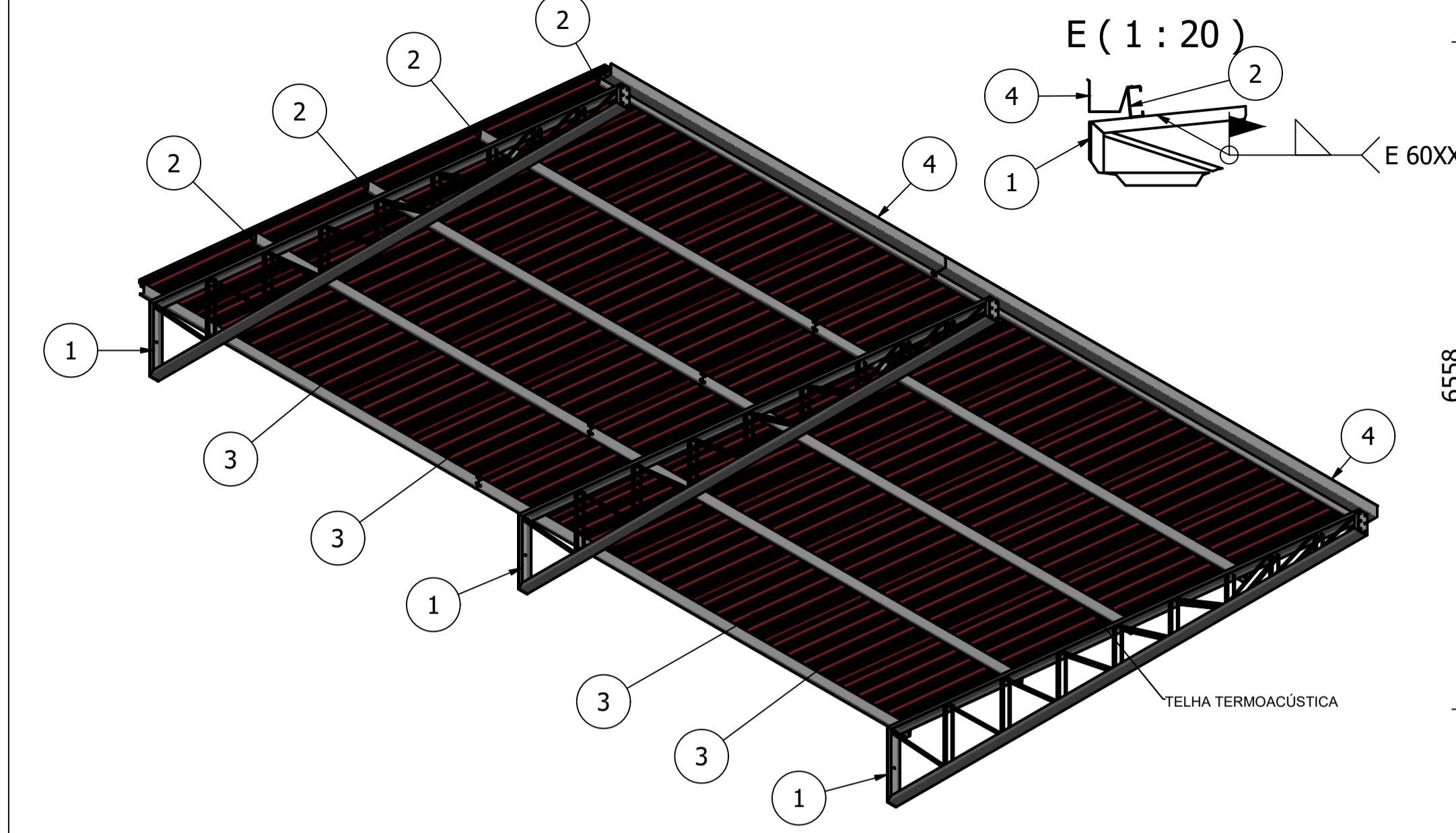
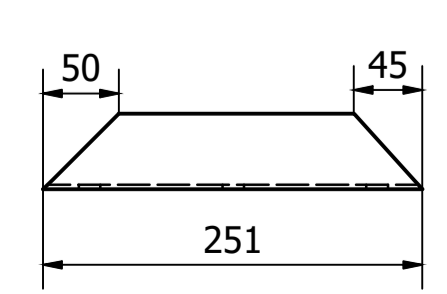
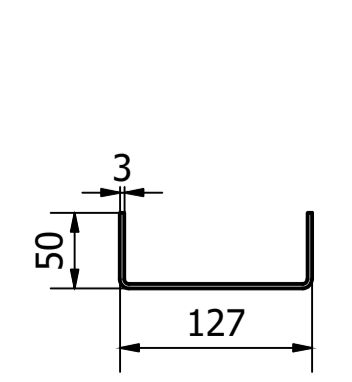
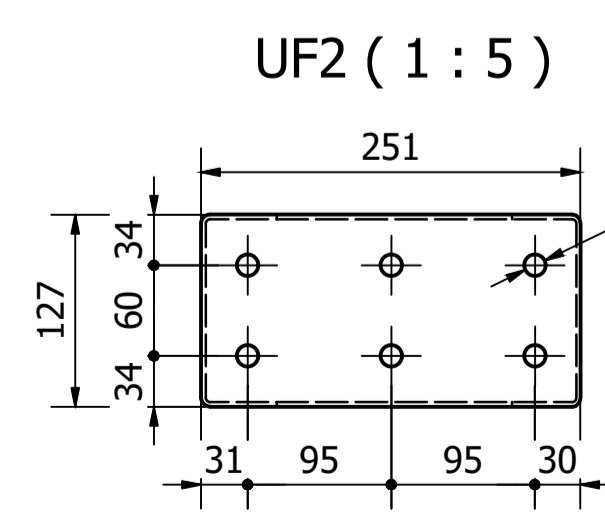
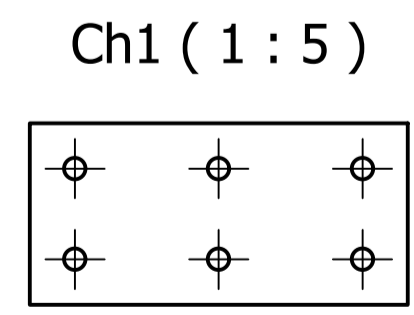
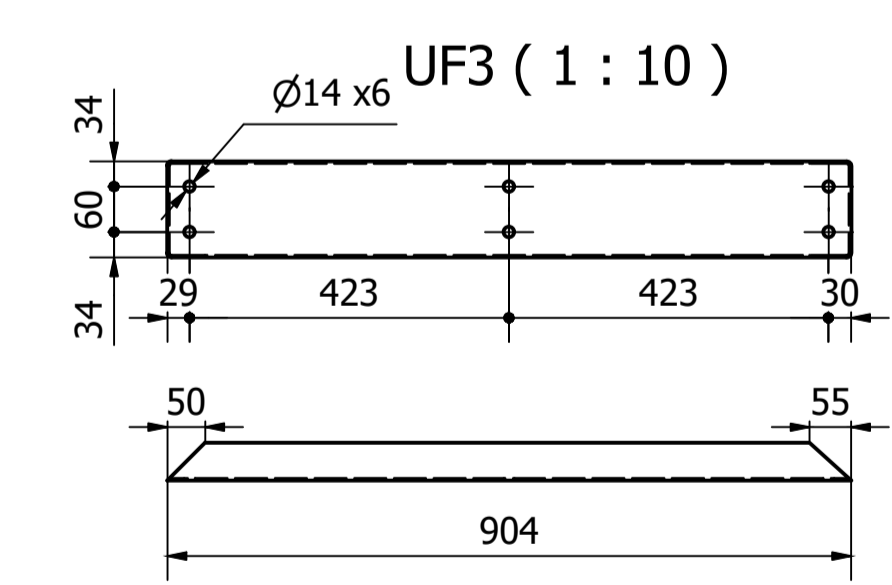
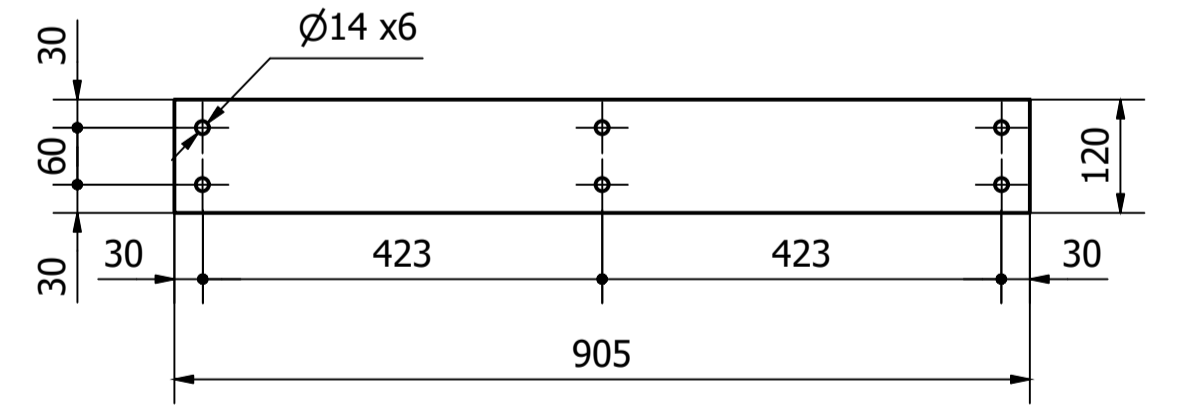
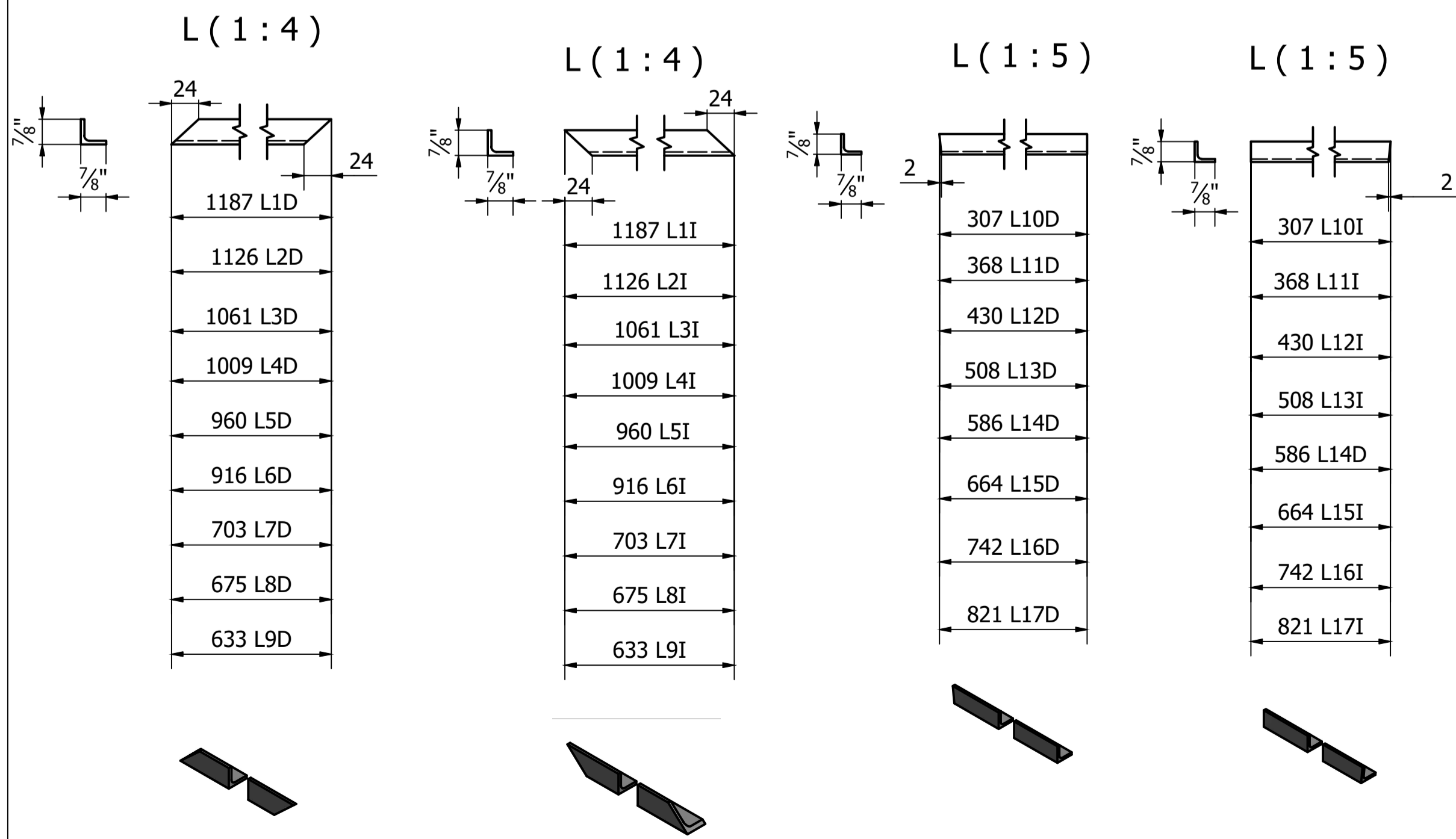
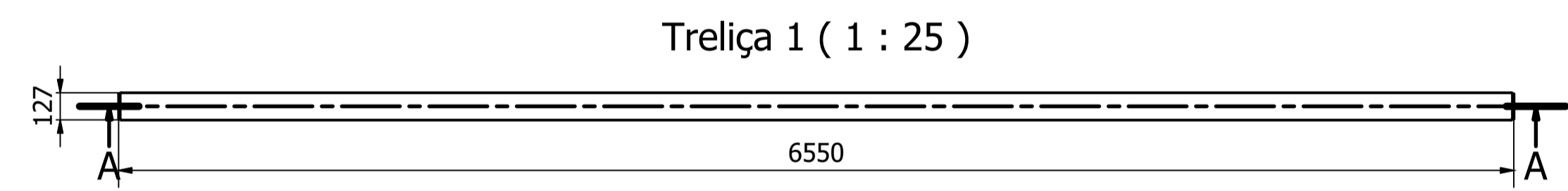
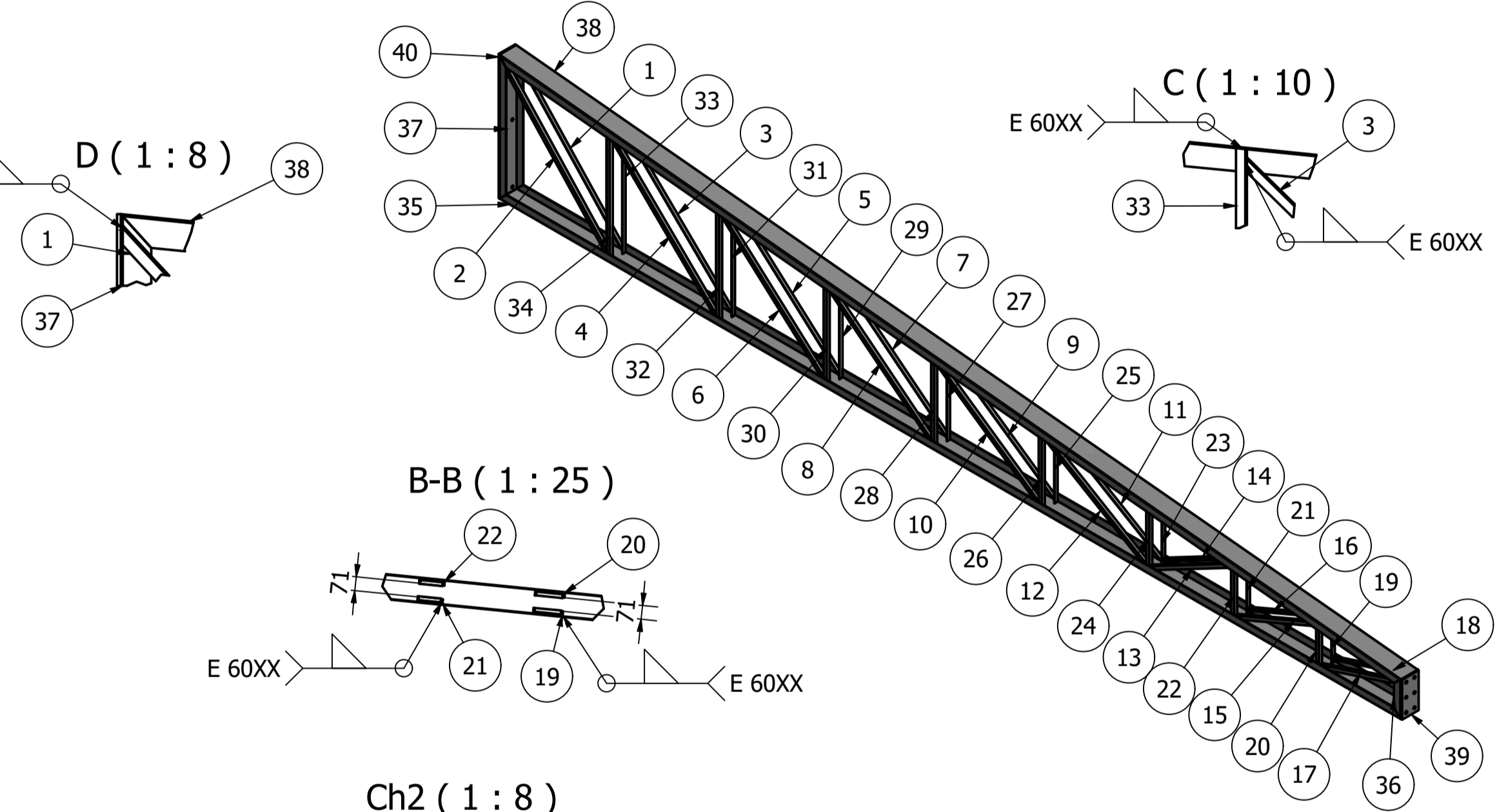
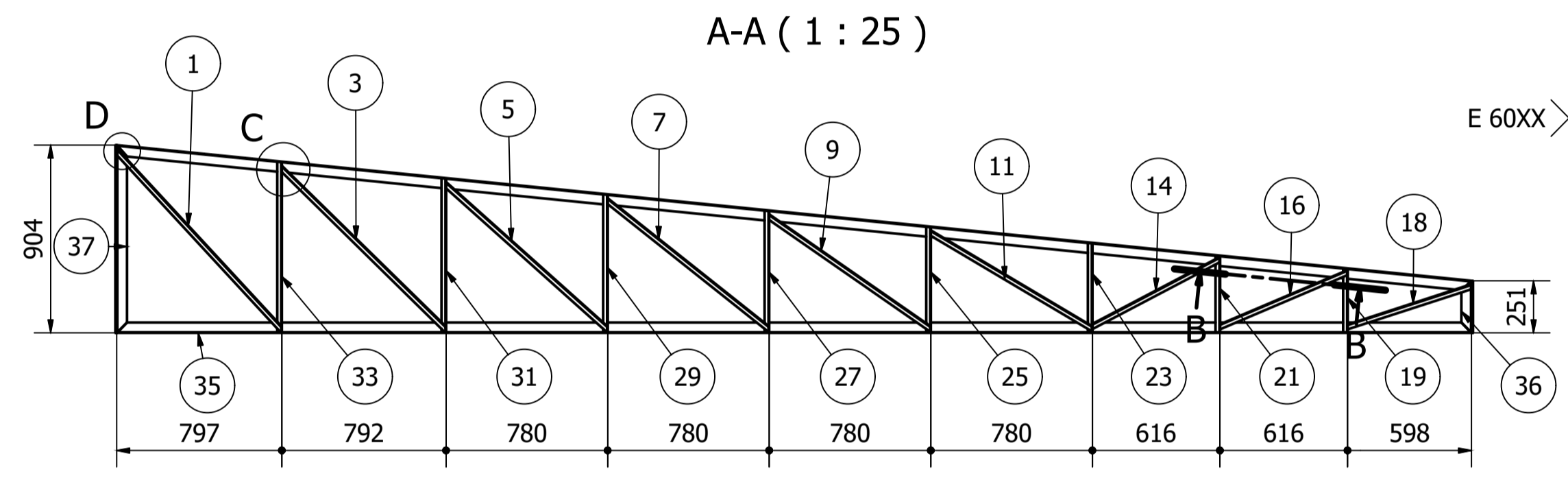


ID	ITEM	QTD	DESCRIÇÃO	COMPRI.	MATERIAL	PESO UN.
1	Treliça 1	3				105,9 kg
2	Terça	10	Perfil C 120 x 52 x 19 x3	6000	ASTM A36	34,2 kg
3	Telha Termoacústica	11	AT40-985 30mm PU	6500		
4	Calla 150 X120	2	Calha 250 x0,43	6000	ASTM A36	7,5 kg



ID	ITEM	QTD	DESCRIÇÃO	COMPRI.	MATERIAL	PESO UN.
1	L1D	1	L 7,8 x 1,8	1187	ASTM A36	1,2 kg
2	L1I	1	L 7,8 x 1,8	1187	ASTM A36	1,2 kg
3	L2D	1	L 7,8 x 1,8	1126	ASTM A36	1,2 kg
4	L2I	1	L 7,8 x 1,8	1126	ASTM A36	1,2 kg
5	L3D	1	L 7,8 x 1,8	1061	ASTM A36	1,1 kg
6	L3I	1	L 7,8 x 1,8	1061	ASTM A36	1,1 kg
7	L4D	1	L 7,8 x 1,8	1009	ASTM A36	1,1 kg
8	L4I	1	L 7,8 x 1,8	1009	ASTM A36	1,1 kg
9	L5D	1	L 7,8 x 1,8	960	ASTM A36	1,0 kg
10	L5I	1	L 7,8 x 1,8	960	ASTM A36	1,0 kg
11	L6D	1	L 7,8 x 1,8	916	ASTM A36	1,0 kg
12	L6I	1	L 7,8 x 1,8	916	ASTM A36	1,0 kg
13	L7D	1	L 7,8 x 1,8	703	ASTM A36	0,7 kg
14	L7I	1	L 7,8 x 1,8	703	ASTM A36	0,7 kg
15	L8D	1	L 7,8 x 1,8	675	ASTM A36	0,7 kg
16	L8I	1	L 7,8 x 1,8	675	ASTM A36	0,7 kg
17	L9D	1	L 7,8 x 1,8	633	ASTM A36	0,7 kg
18	L9I	1	L 7,8 x 1,8	633	ASTM A36	0,7 kg
19	L10D	1	L 7,8 x 1,8	307	ASTM A36	0,3 kg
20	L10I	1	L 7,8 x 1,8	307	ASTM A36	0,3 kg
21	L11D	1	L 7,8 x 1,8	368	ASTM A36	0,4 kg
22	L11I	1	L 7,8 x 1,8	368	ASTM A36	0,4 kg
23	L12D	1	L 7,8 x 1,8	430	ASTM A36	0,5 kg
24	L12I	1	L 7,8 x 1,8	430	ASTM A36	0,5 kg
25	L13D	1	L 7,8 x 1,8	508	ASTM A36	0,5 kg
26	L13I	1	L 7,8 x 1,8	508	ASTM A36	0,5 kg
27	L14D	1	L 7,8 x 1,8	586	ASTM A36	0,6 kg
28	L14I	1	L 7,8 x 1,8	586	ASTM A36	0,6 kg
29	L15D	1	L 7,8 x 1,8	664	ASTM A36	0,7 kg
30	L15I	1	L 7,8 x 1,8	664	ASTM A36	0,7 kg
31	L16D	1	L 7,8 x 1,8	742	ASTM A36	0,8 kg
32	L16I	1	L 7,8 x 1,8	742	ASTM A36	0,8 kg
33	L17D	1	L 7,8 x 1,8	821	ASTM A36	0,9 kg
34	L17I	1	L 7,8 x 1,8	821	ASTM A36	0,9 kg
35	UF1	1	UF 127 x50 x3	6537	ASTM A36	33,3 kg
36	UF2	1	UF 127 x50 x3	251	ASTM A36	1,1 kg
37	UF3	1	UF 127 x50 x3	904	ASTM A36	4,5 kg
38	UF4	1	UF 127 x50 x3	6570	ASTM A36	33,5 kg
39	Ch1	1	6,35 x 120 x 250		ASTM A36	1,4 kg
40	Ch2	1	6,35 x 120 x 905		ASTM A36	5,4 kg



REV. 01 | 02/08/19 | ATENDIMENTO AO RELATÓRIO DE ANÁLISE | DAC
 REV. 00 | 12/06/19 | EMISSÃO INICIAL | DAC
 REVISÃO: DATA : | DESCRIÇÃO: | RESP.:

CLIENTE:

Prefeitura Municipal de Pouso Alegre

PROJETO: DAC Engenharia

GERÊNCIA DE PROJETOS: DENIS DE SOUZA SILVA CREA: MG-127.216/D
 COORDENAÇÃO DE PROJETOS: ALOISIO CAETANO FERREIRA CREA: MG-97.132/D
 RESPONSÁVEL TÉCNICO: ENGR. CIVIL FLÁVIA C. BARBOSA CREA: MG-187.842/D
 PROJETO: GERMAN LOZANO VELA
 DESENHO: JONAS GUERREIRO GONÇALVES

EMPREENDIMENTO: REFORMA E AMPLIAÇÃO DO CEIM ANNA VIANA DE ANDRADE

ENDEREÇO: RUA CORONEL BRITO FILHO, Nº 621 - BAIRRO FÁTIMA I, POUSO ALEGRE - MINAS GERAIS

DISCIPLINA: METÁLICA
 FASE DO PROJETO: EXECUTIVO
 FOLHA Nº: 01/07

DATA INICIAL: 02/08/2019 | ESCALA: INDICADA | REVISÃO: R01 | ARQUIVO: DAC-PMPA-ANA-PE-MET-01-R01.DWG