

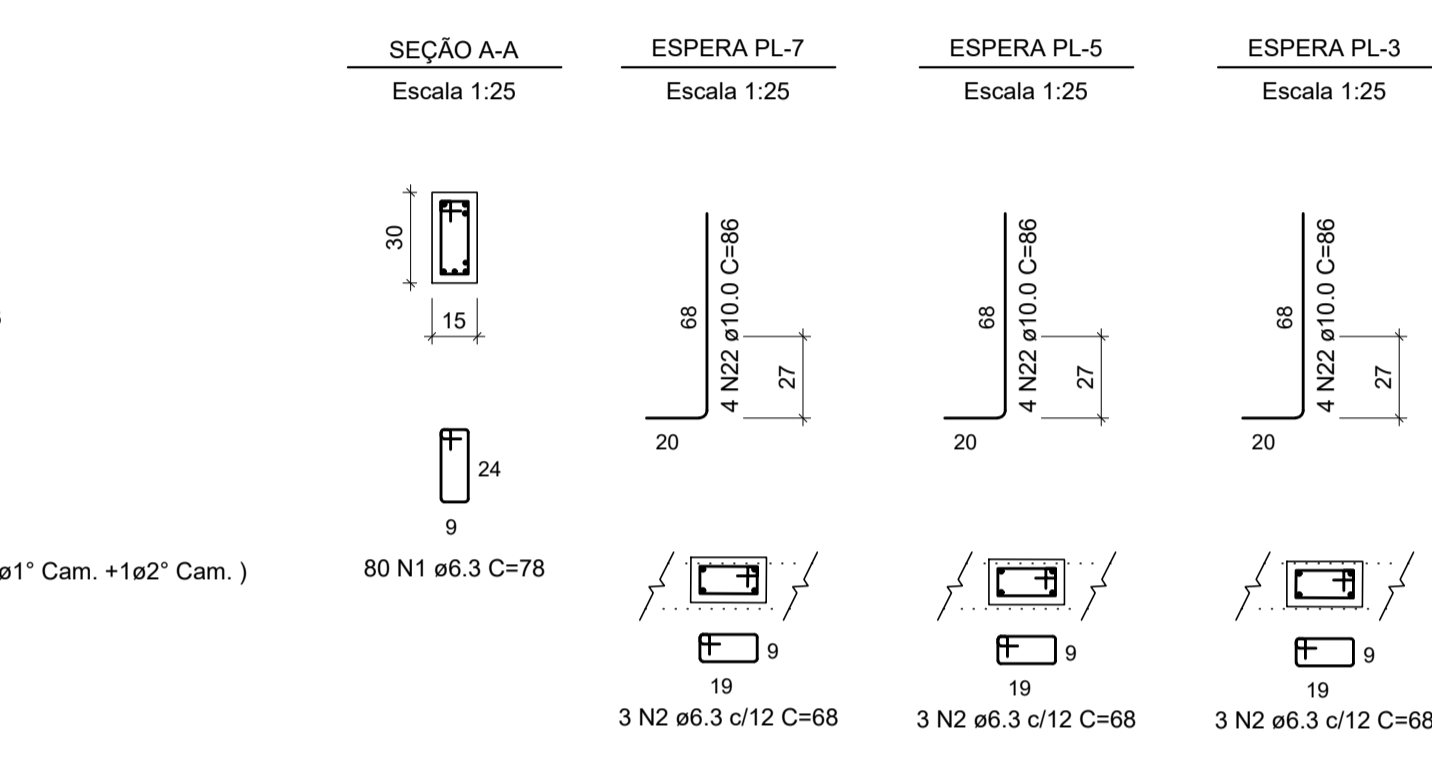
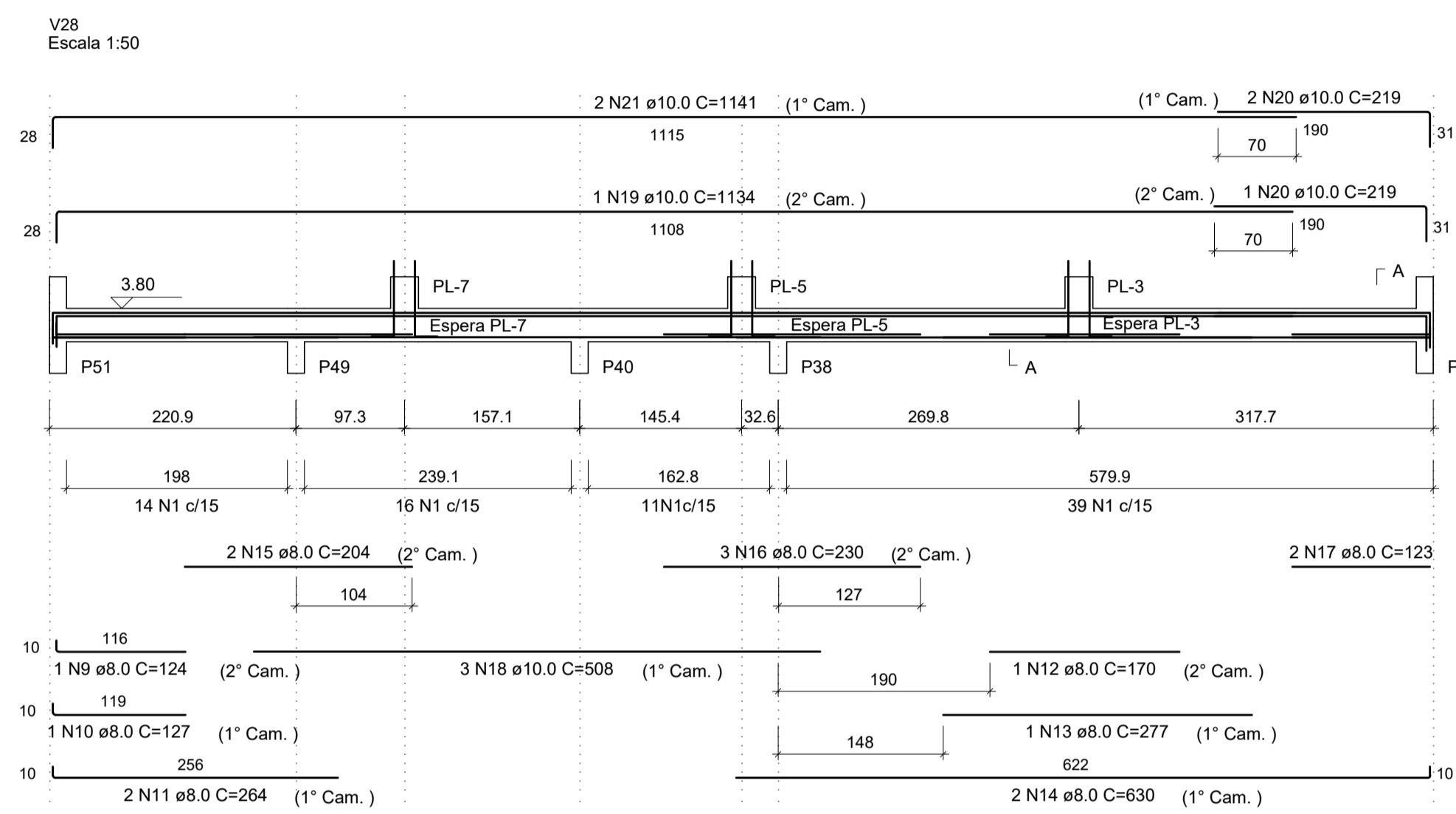
**RESUMO DO AÇO**

AÇO	DIAM (mm)	C.TOTAL (m)	QUANT + 10% (Barras)	UNIT	PESO + 10% (kg)
CA50	6.3	135.6	13	12 m	36.5
	8.0	145.6	14	12 m	63.2
	10.0	66.3	7	12 m	45
<b>PESO TOTAL (kg)</b>					
CA50	144.6				

Volume de concreto (C-25) = 1.18 m³  
Área de forma = 19.66 m²

**RELAÇÃO DO AÇO**

AÇO	N	DIAM (mm)	QUANT	C.UNIT (cm)	C.TOTAL (cm)
CA50	1	6.3	166	78	12948
	2	6.3	9	68	612
	3	8.0	2	92	184
	4	8.0	2	97	194
	5	8.0	6	700	4200
	6	8.0	2	153	306
	7	8.0	2	726	1452
	8	8.0	6	732	4392
	9	8.0	1	124	124
	10	8.0	1	127	127
	11	8.0	2	264	528
	12	8.0	1	170	170
	13	8.0	1	277	277
	14	8.0	2	630	1260
	15	8.0	2	204	408
	16	8.0	3	230	690
	17	8.0	2	123	246
	18	10.0	3	508	1524
	19	10.0	1	1134	1134
	20	10.0	3	219	657
	21	10.0	2	1141	2282
	22	10.0	12	86	1032



**RESUMO DO AÇO**

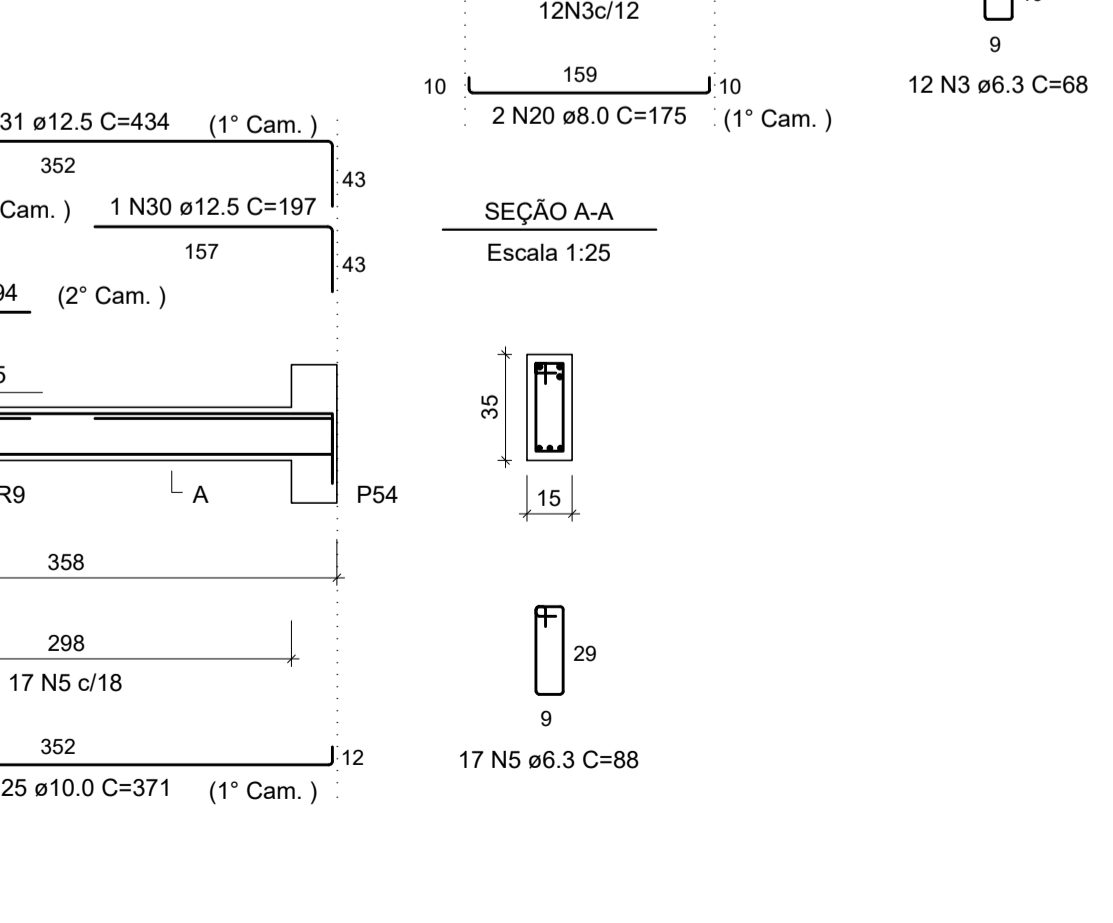
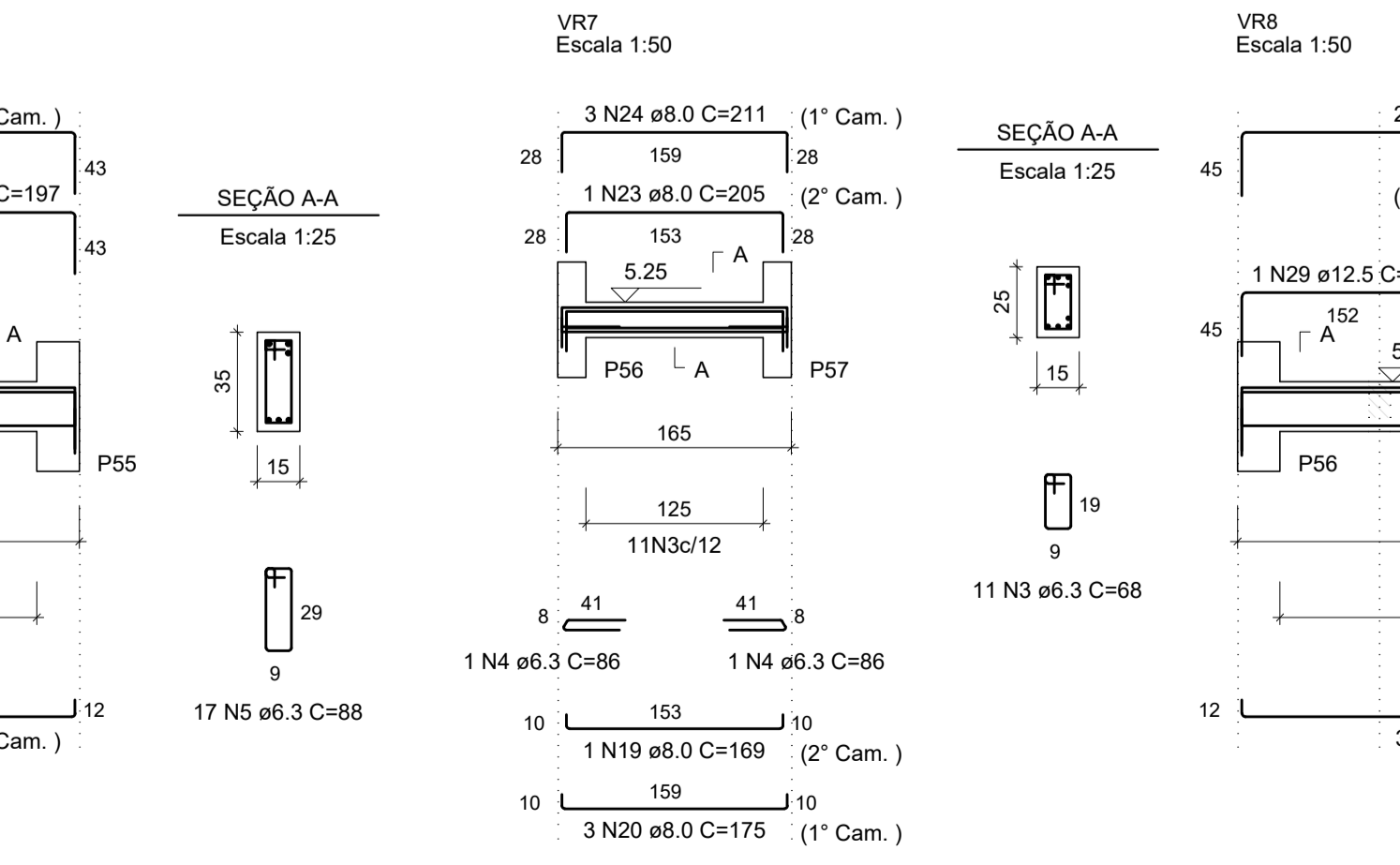
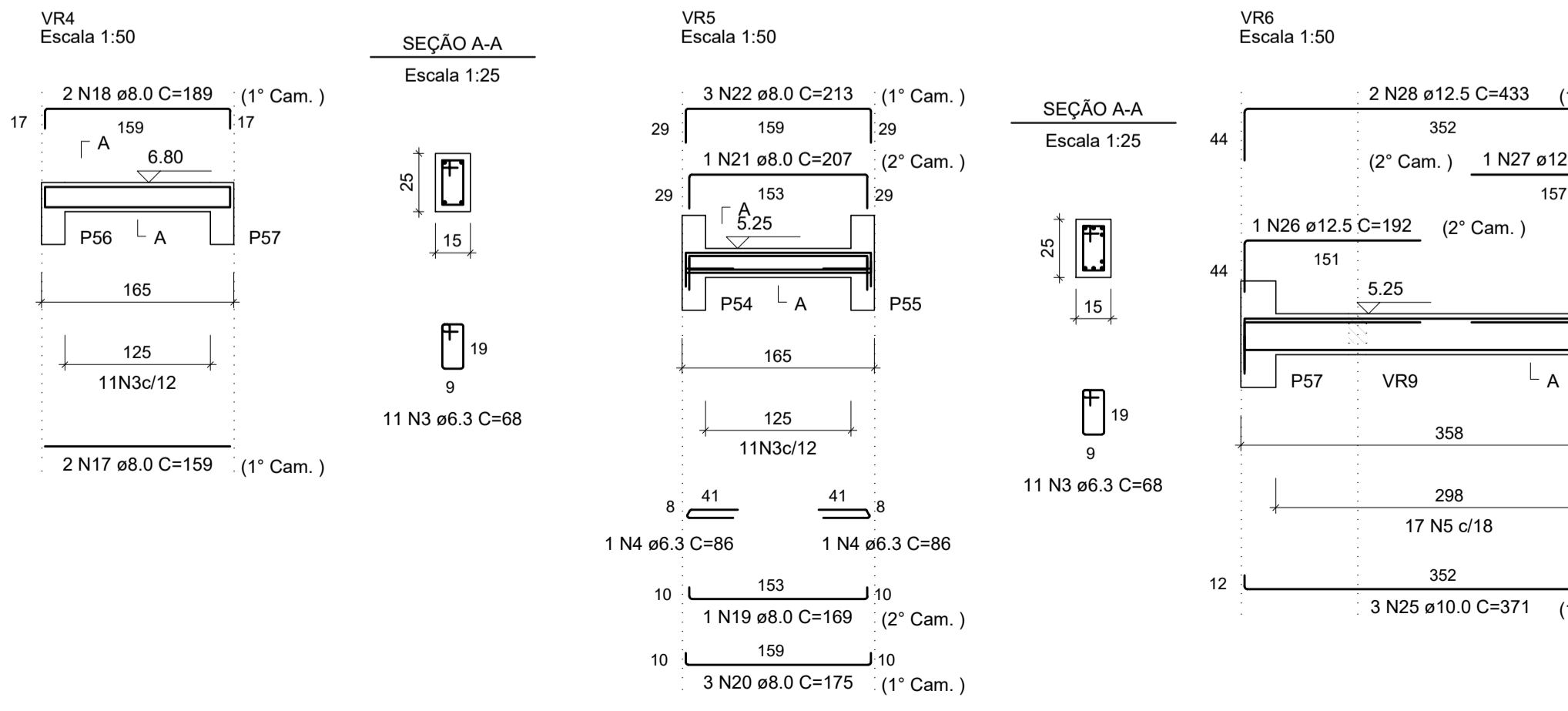
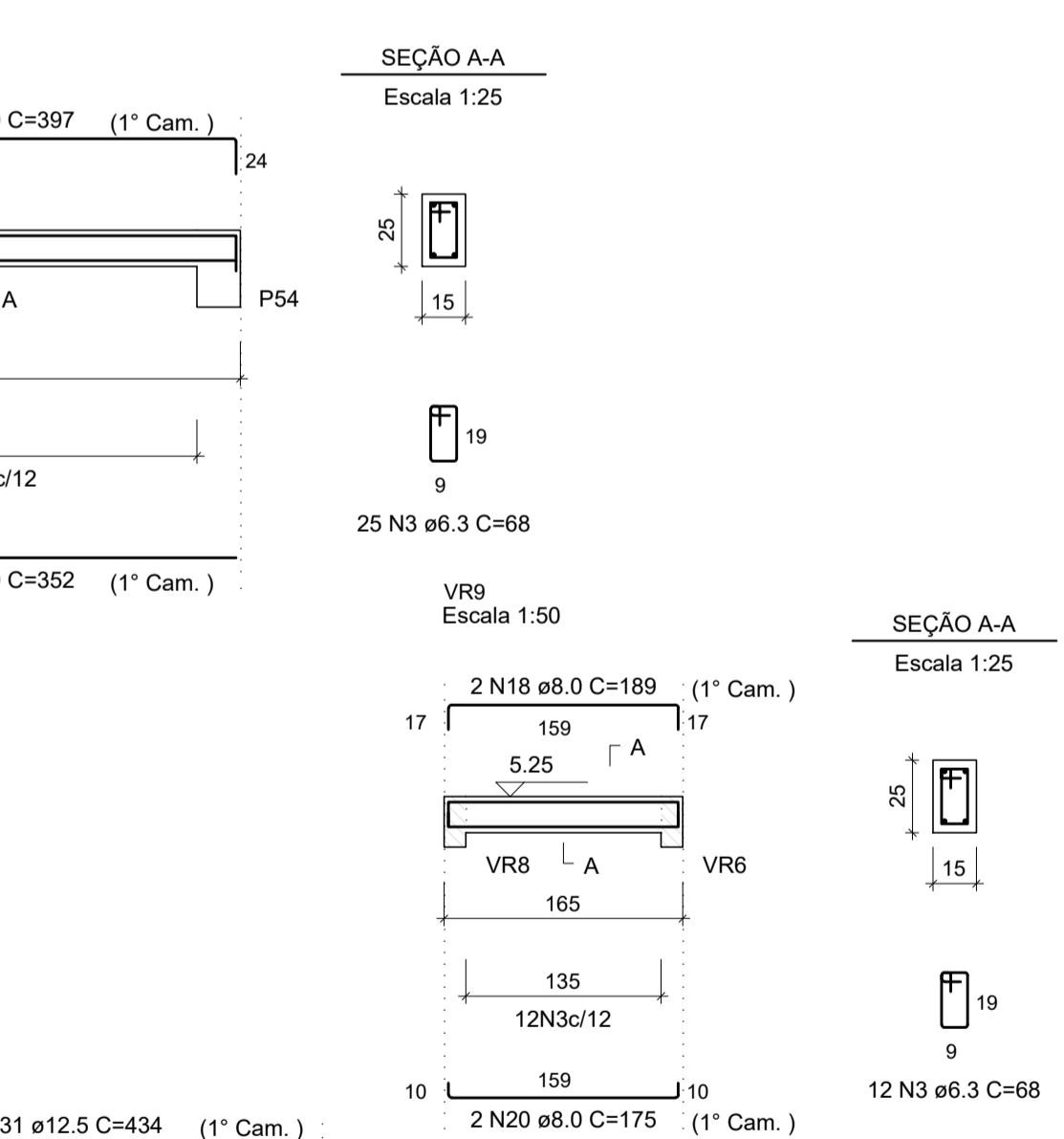
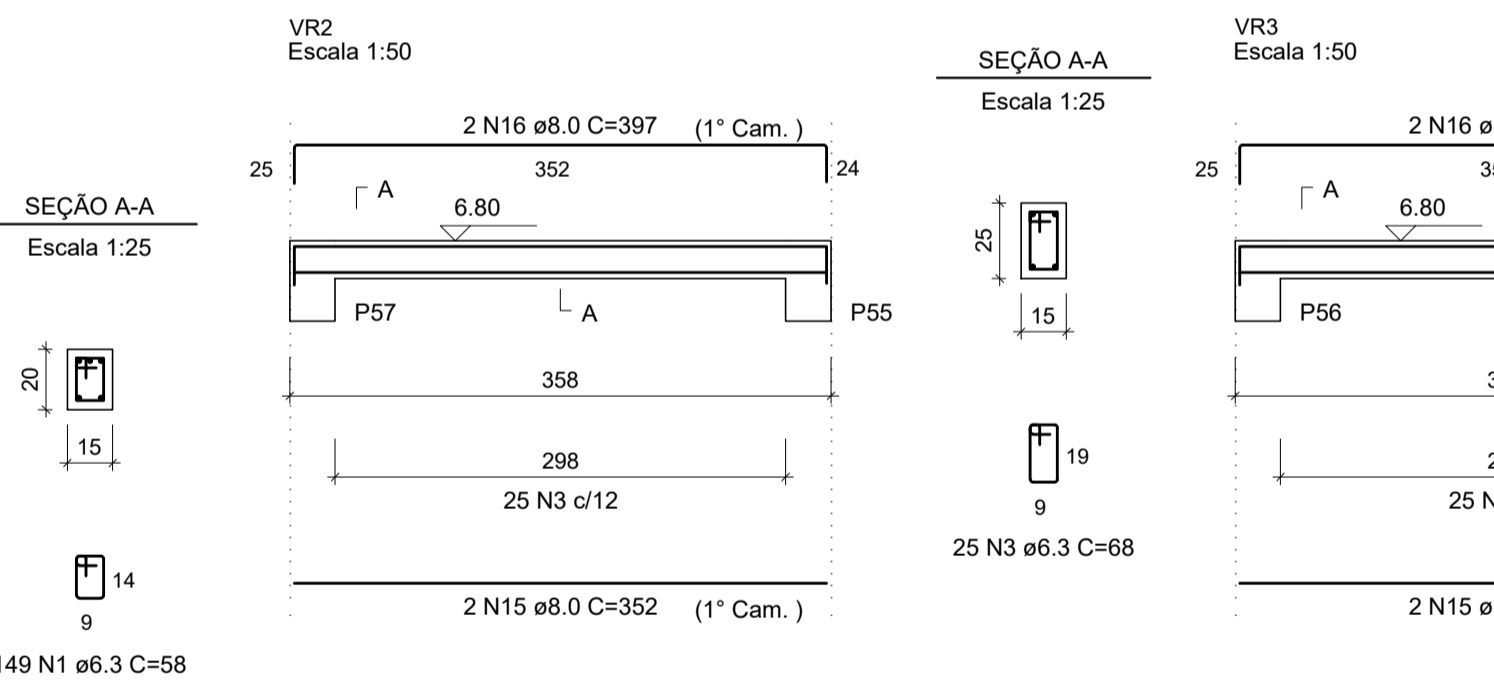
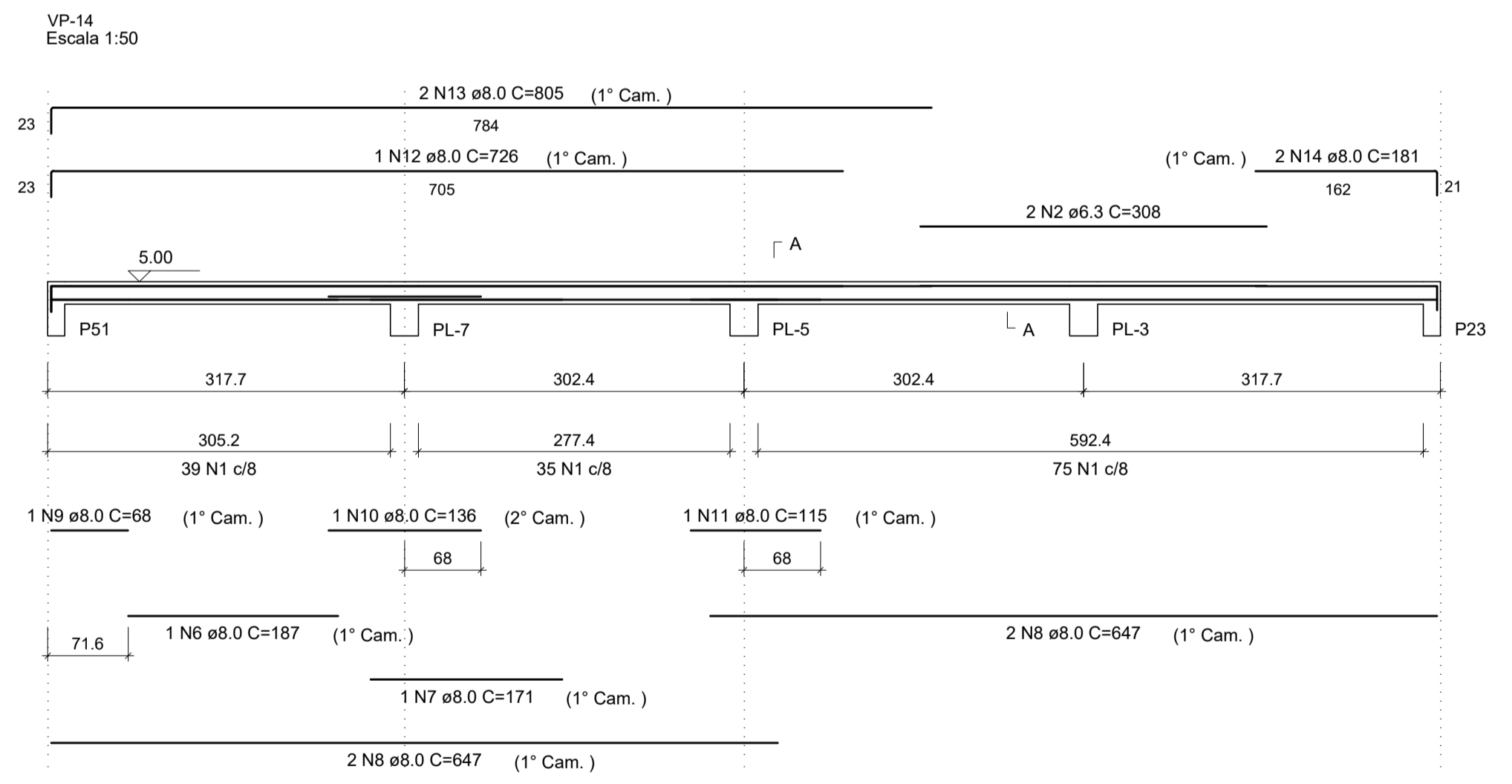
AÇO	DIAM (mm)	C.TOTAL (m)	QUANT + 10% (Barras)	UNIT	PESO + 10% (kg)
CA50	6.3	190.5	18	12 m	51.3
	8.0	134.6	13	12 m	58.4
	10.0	22.3	3	12 m	15.1
	12.5	25.1	3	12 m	26.6
<b>PESO TOTAL (kg)</b>					
CA50	151.4				

Volume de concreto (C-25) = 1.26 m³  
Área de forma = 21.85 m²

**RELAÇÃO DO AÇO**

AÇO	N	DIAM (mm)	QUANT	C.UNIT (cm)	C.TOTAL (cm)
CA50	1	6.3	149	58	8642
	2	6.3	2	308	616
	3	6.3	95	68	6460
	4	6.3	4	86	344
	5	6.3	34	88	2992
	6	8.0	1	187	187
	7	8.0	1	171	171
	8	8.0	4	647	2588
	9	8.0	1	68	68
	10	8.0	1	136	136
	11	8.0	1	115	115
	12	8.0	1	726	726
	13	8.0	2	805	1610
	14	8.0	2	181	362
	15	8.0	4	352	1408
	16	8.0	4	397	1588
	17	8.0	2	159	318
	18	8.0	4	189	756
	19	8.0	2	169	338
	20	8.0	8	175	1400
	21	8.0	1	207	207
	22	8.0	3	213	639
	23	8.0	1	205	205
	24	8.0	3	211	633
	25	10.0	6	371	2226
	26	12.5	1	192	192
	27	12.5	1	197	197
	28	12.5	2	433	866
	29	12.5	1	194	194
	30	12.5	1	197	197
	31	12.5	2	434	868

**DETALHAMENTO DAS VIGAS TERREO**  
Escala 1:40



**DETALHAMENTO DAS VIGAS DOS NÍVEIS SUPERIORES**  
Escala 1:40

REVISÃO: DATA : DESCRIÇÃO: RESP.:

CLIENTE: Prefeitura Municipal de Pouso Alegre

PROJETO: REFORMA E AMPLIAÇÃO DO CEIM ANNA VIANA DE ANDRADE

ENDEREÇO: RUA CORONEL BRITO FILHO, N° 621 - BAIRRO FÁTIMA I, POUSO ALEGRE - MINAS GERAIS

ASSUNTO: VIGAS - TERREO E PAVIMENTOS SUPERIORES, DETALHAMENTO DE ARMAÇÃO

DISCIPLINA: ESTRUTURAL

FASE DO PROJETO: EXECUTIVO

FOLHA N°: 19

DATA INICIAL: 02/08/2019 | ESCALA: INDICADO | REVISÃO: R01 | ARQUIVO: DAC-PMPA-ANA-PE-EST-R01.DWG