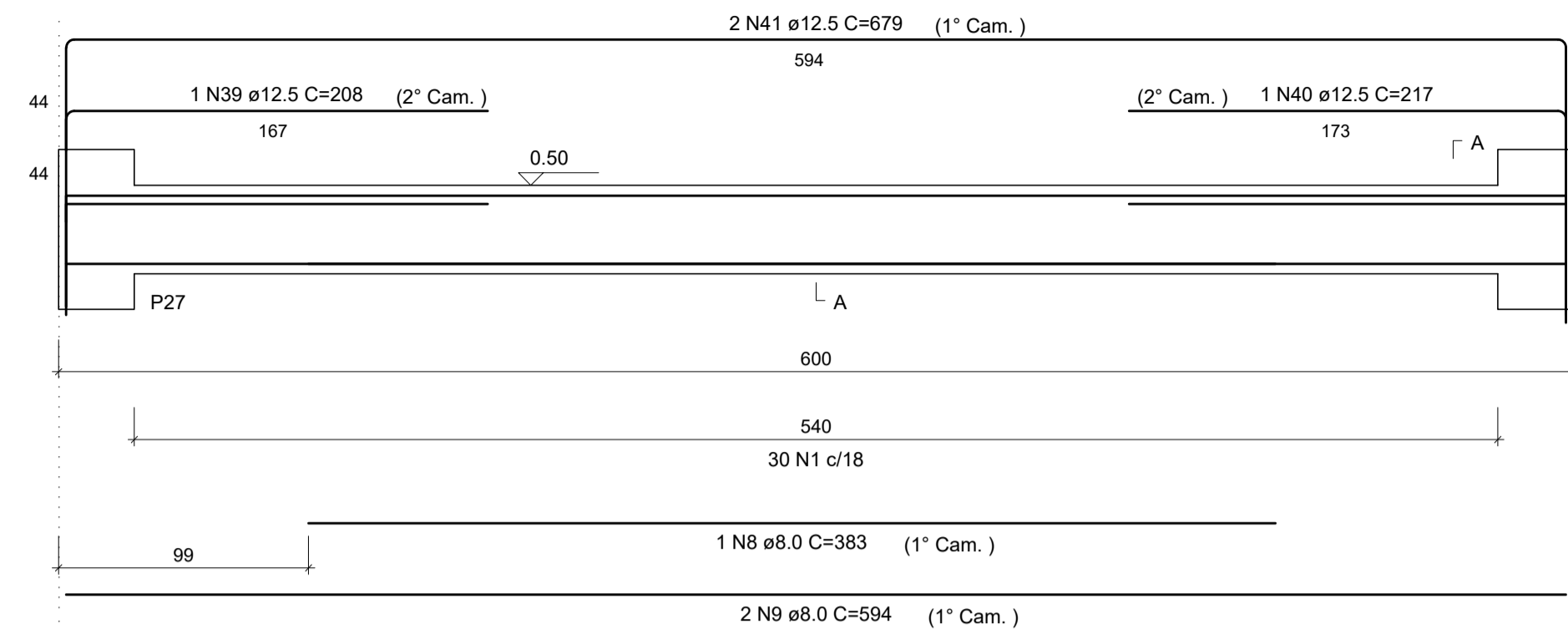
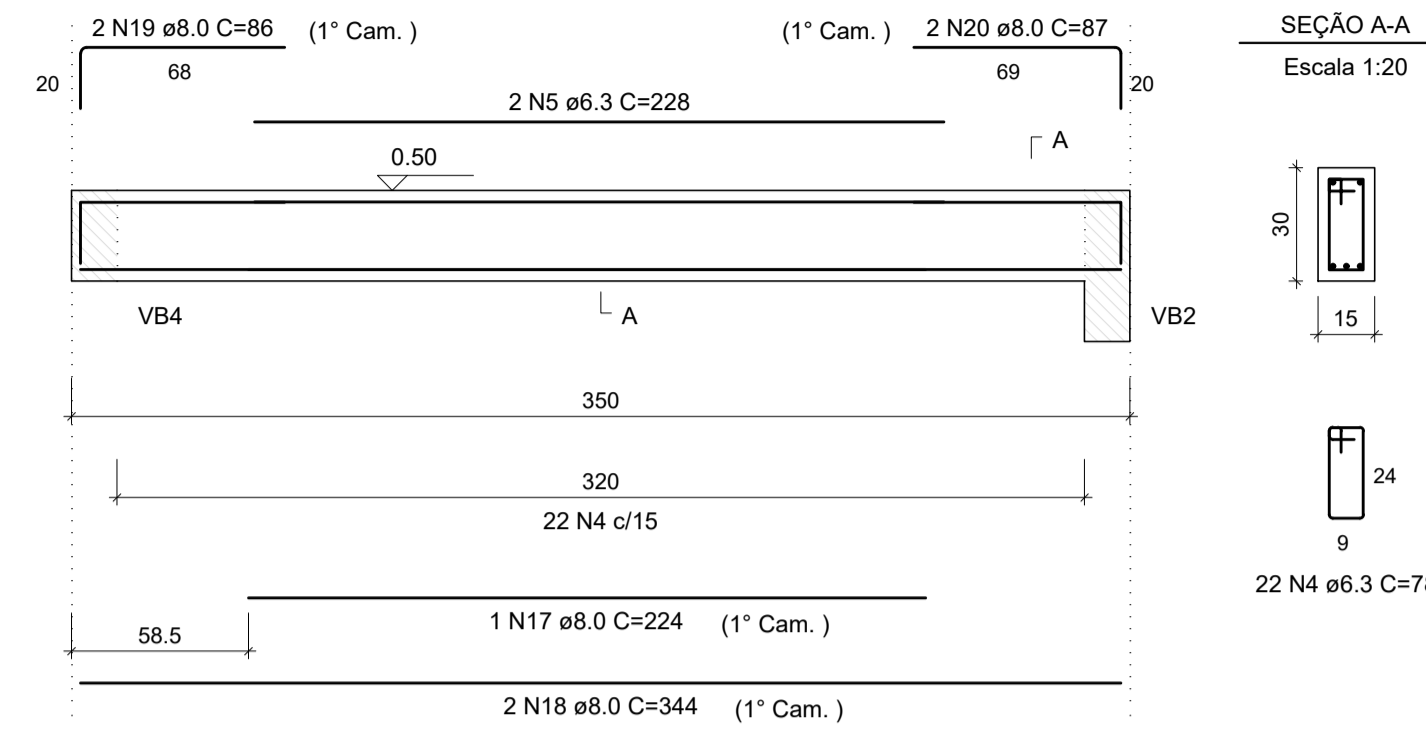


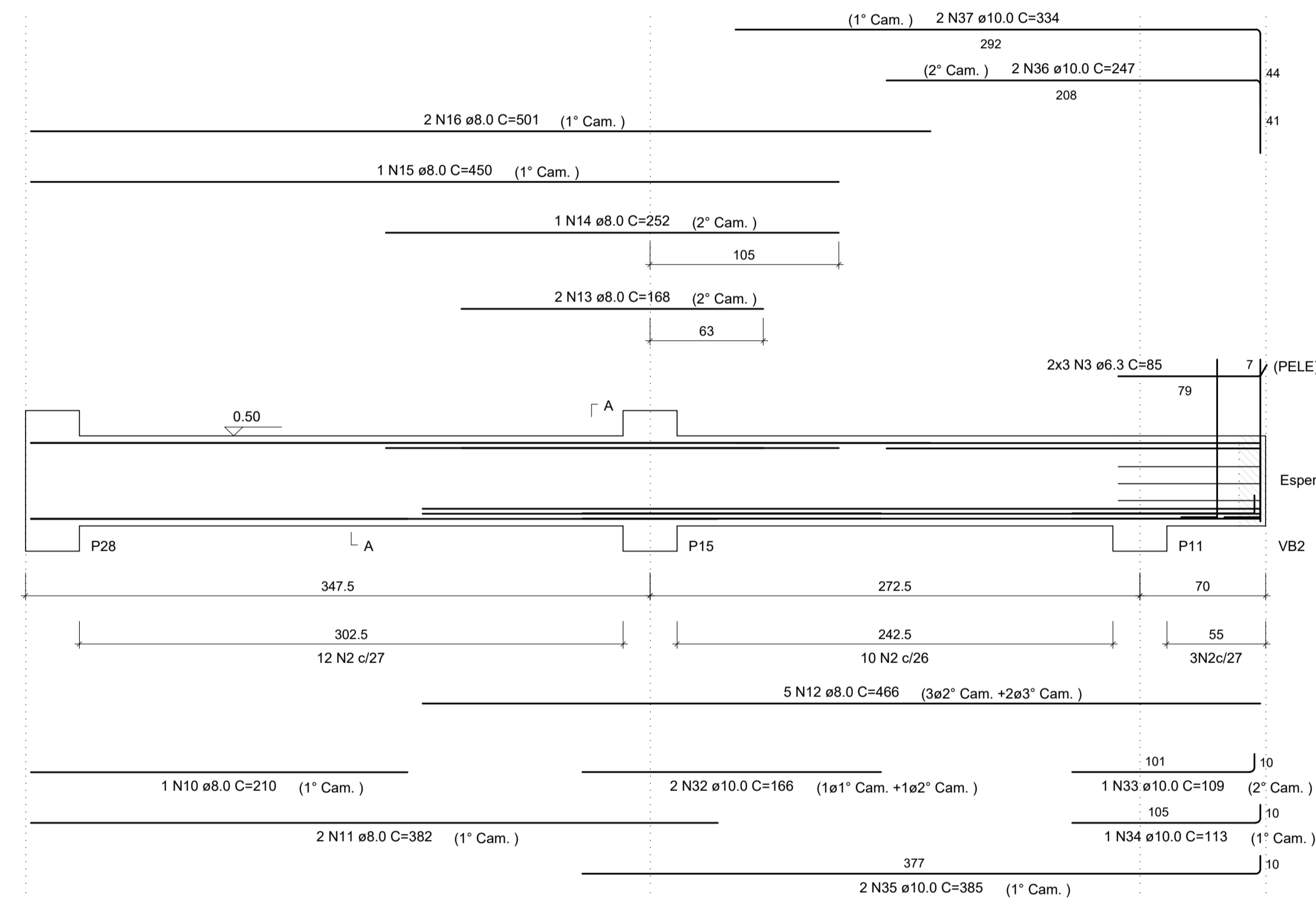
VB26
Escala 1:25



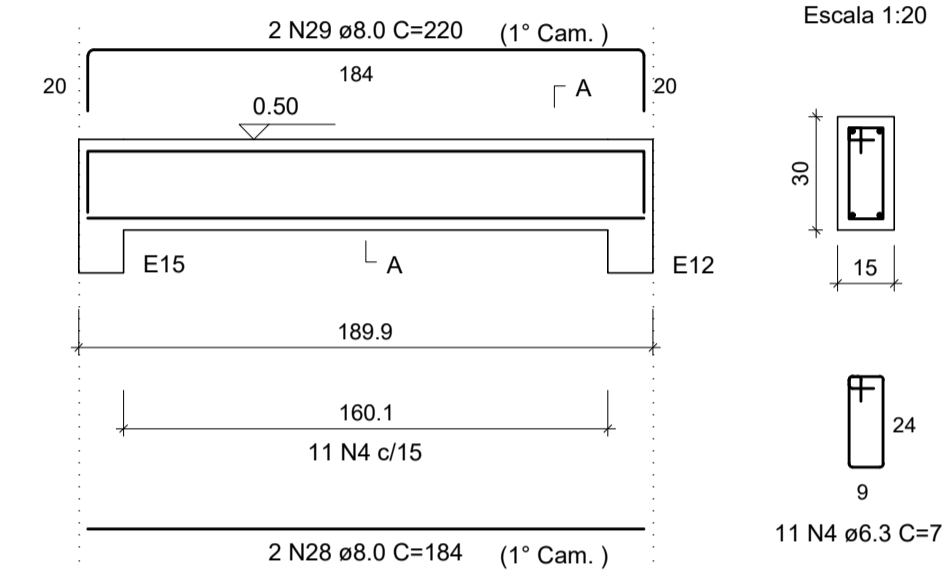
VB31
Escala 1:25



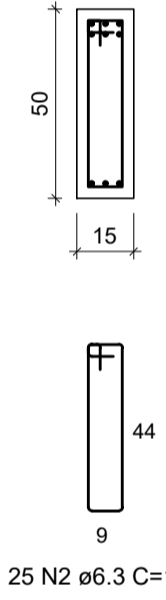
VB28
Escala 1:25



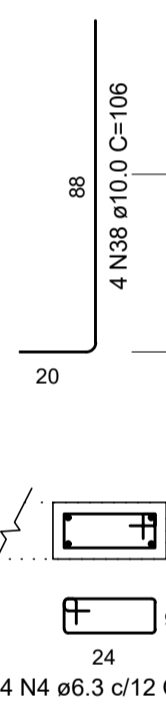
VB37
Escala 1:25



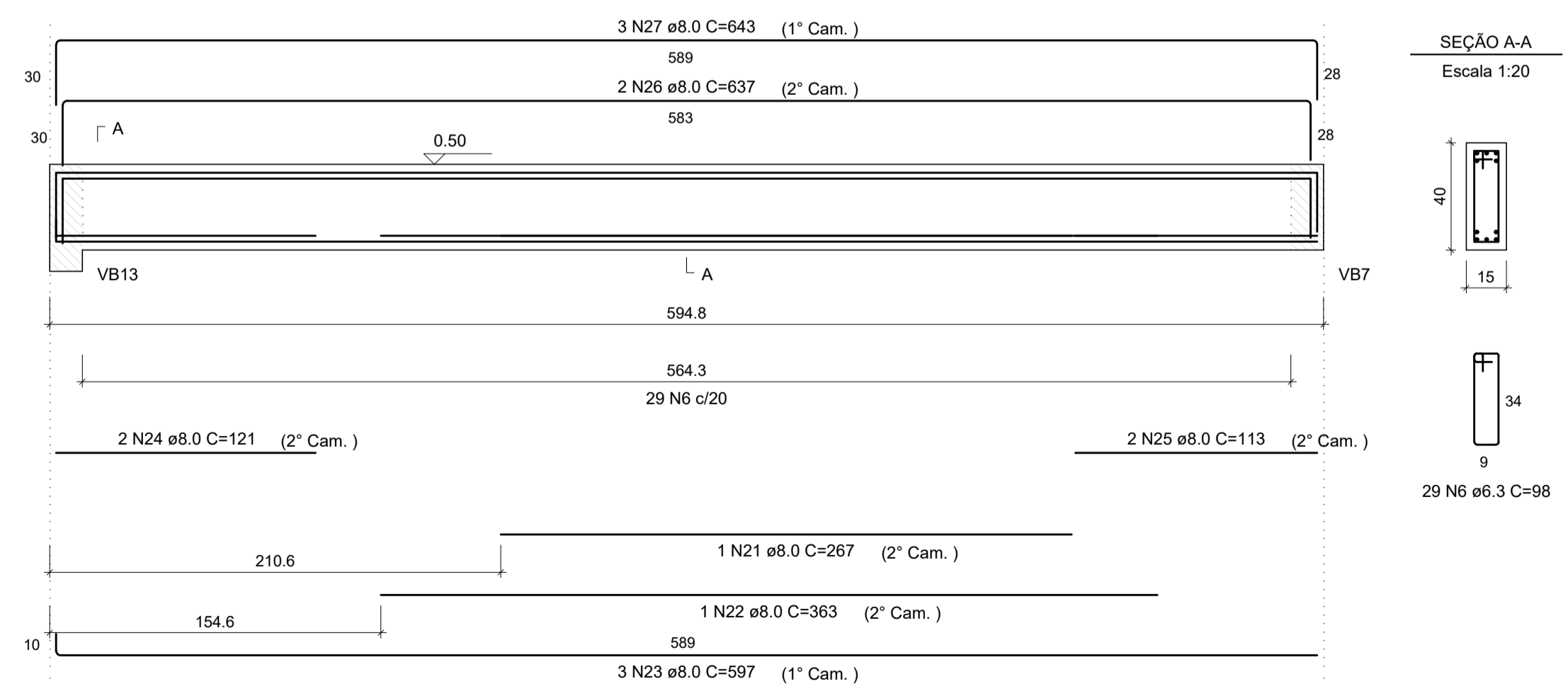
SEÇÃO A-A
Escala 1:20



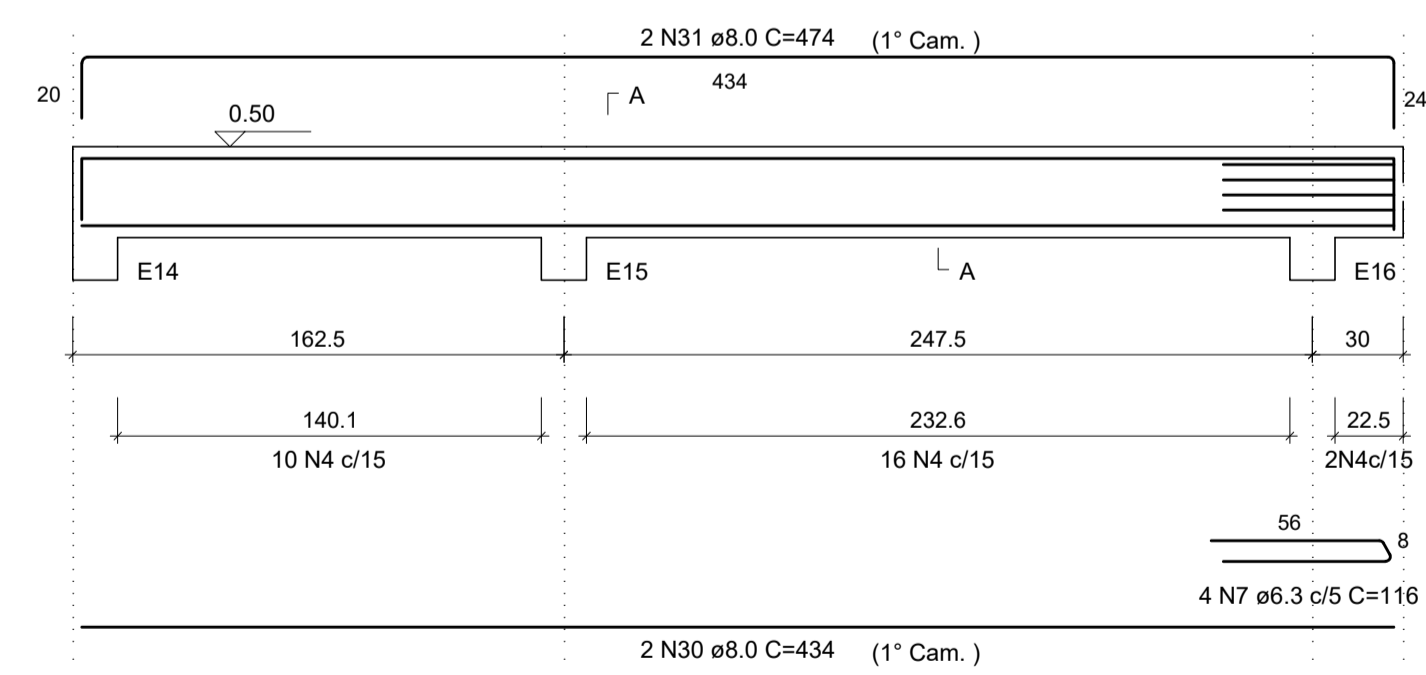
ESPERA P3
Escala 1:20



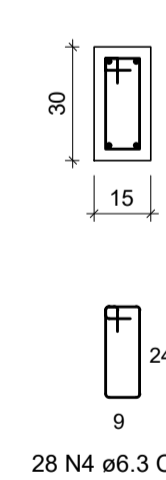
VB34
Escala 1:25



VB38
Escala 1:25



SEÇÃO A-A
Escala 1:20



RELAÇÃO DO AÇO

AÇO	N	DIAM (mm)	QUANT	C.UNIT (cm)	C.TOTAL (cm)
CA50	1	6.3	30	88	2640
	2	6.3	25	118	2950
	3	6.3	6	85	510
	4	6.3	65	78	5070
	5	6.3	2	228	456
	6	6.3	29	98	2842
	7	6.3	4	116	464
	8	8.0	1	383	383
	9	8.0	2	594	1188
	10	8.0	1	210	210
	11	8.0	2	382	764
	12	8.0	5	466	2330
	13	8.0	2	168	336
	14	8.0	1	252	252
	15	8.0	1	450	450
	16	8.0	2	501	1002
	17	8.0	1	224	224
	18	8.0	2	344	688
	19	8.0	2	86	172
	20	8.0	2	87	174
	21	8.0	1	267	267
	22	8.0	1	363	363
	23	8.0	3	597	1791
	24	8.0	2	121	242
	25	8.0	2	113	226
	26	8.0	2	637	1274
	27	8.0	3	643	1929
	28	8.0	2	184	368
	29	8.0	2	220	440
	30	8.0	2	434	868
	31	8.0	2	474	948
	32	10.0	2	166	332
	33	10.0	1	109	109
	34	10.0	1	113	113
	35	10.0	2	385	770
	36	10.0	2	247	494
	37	10.0	2	334	668
	38	10.0	4	106	424
	39	12.5	1	208	208
	40	12.5	1	217	217
	41	12.5	2	679	1358

RESUMO DO AÇO

AÇO	DIAM (mm)	C.TOTAL (m)	QUANT + 10% (Barras)	UNIT	PESO + 10% (kg)
CA50	6.3	149.3	14	12 m	40.2
	8.0	168.9	16	12 m	73.3
	10.0	29.1	3	12 m	19.7
	12.5	17.8	2	12 m	18.9
PESO TOTAL (kg)					
CA50	152.1				

Volume de concreto (C-25) = 1.63 m³
Área de forma = 26.03 m²



Prefeitura Municipal de Pouso Alegre

<p>PROJETO</p>  <p>DAC engenharia</p> <p>Rua Miguel Viana, nº 81, Sala 12 Bairro Morro Chic CEP: 37500-080 - Itajubá / MG Tel: (35) 3623-5720 www.dacengenharia.com.br</p>	<p>GERÊNCIA DE PROJETOS DENIS DE SOUZA SILVA CREA: MG-127.216/D</p> <p>COORDENAÇÃO DE PROJETOS ALOSIO CAETANO FERREIRA CREA: MG-97.132/D</p> <p>RESPONSÁVEL TÉCNICO ENGR. ELÉTRICO ADRIANO M. CAMPOS CREA: MG-187.842/D</p> <p>PROJETO FLÁVIA C. BARBOSA E WILLIAM BARADEL LARI</p> <p>DESENHO WILLIAM BARADEL LARI</p>
<p>EMPREENHIMENTO</p> <p>REFORMA E AMPLIAÇÃO DO CEIM ANNA VIANA DE ANDRADE</p>	
<p>ENDEREÇO RUA CORONEL BRITO FILHO, Nº 621 - BAIRRO FÁTIMA I POUSO ALEGRE - MINAS GERAIS</p> <p>ASSUNTO DETALHAMENTO DA ARMAÇÃO VIGAS BALDRAME</p>	<p>DISCIPLINA ESTRUTURAL</p> <p>FASE DO PROJETO EXECUTIVO</p> <p>FOLHA Nº. 14</p>
<p>DATA INICIAL: 02/08/2019</p> <p>ESCALA: INDICADO</p> <p>REVISÃO: R01</p>	<p>ARQUIVO: DAC-PMPA-ANA-PE-EST-R01.DWG</p>