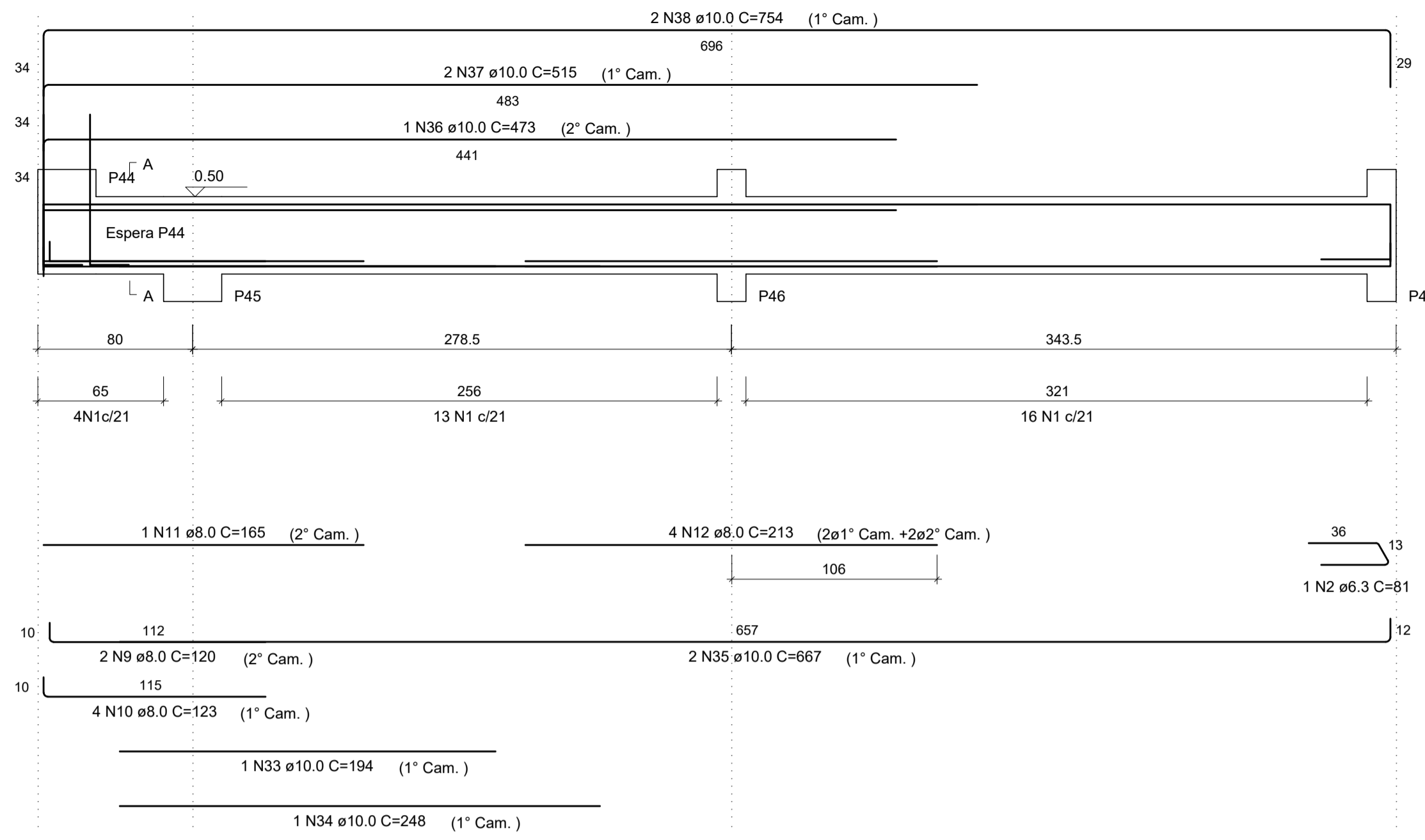
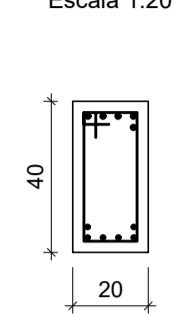


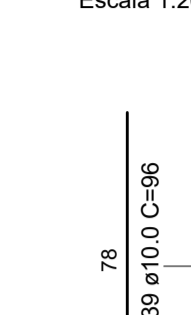
VB15
Escala 1:25



SEÇÃO A-A
Escala 1:20



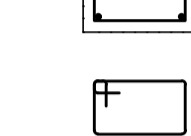
ESPERA P44
Escala 1:20



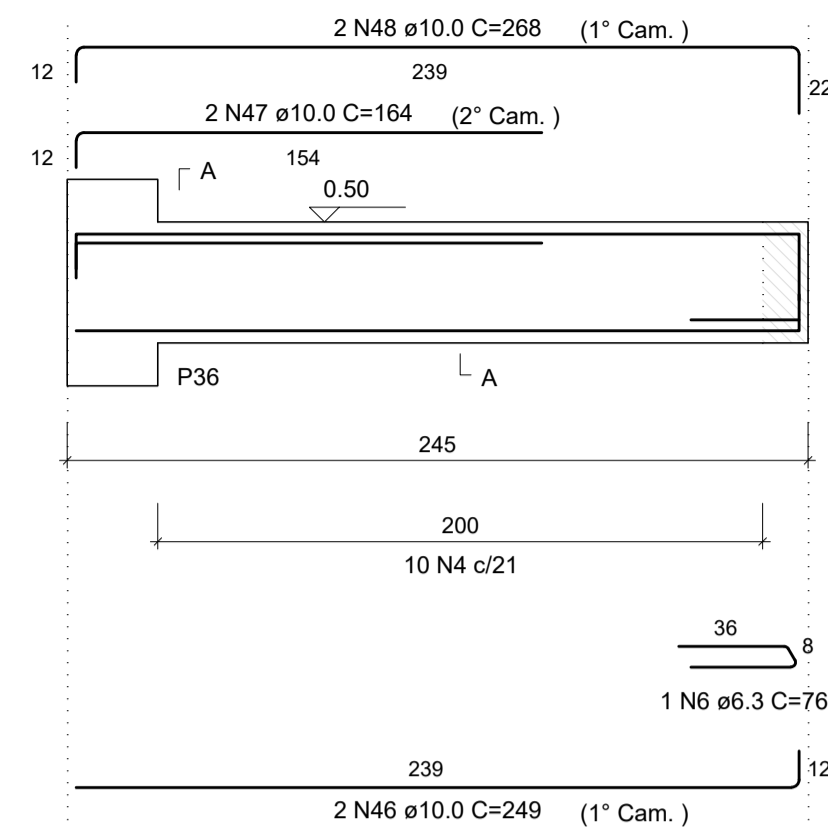
33 N1 ø6.3 C=108



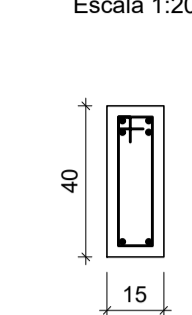
4 N3 ø6.3 c/12 C=88



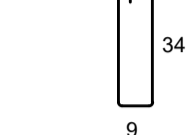
VB25
Escala 1:25



SEÇÃO A-A
Escala 1:20



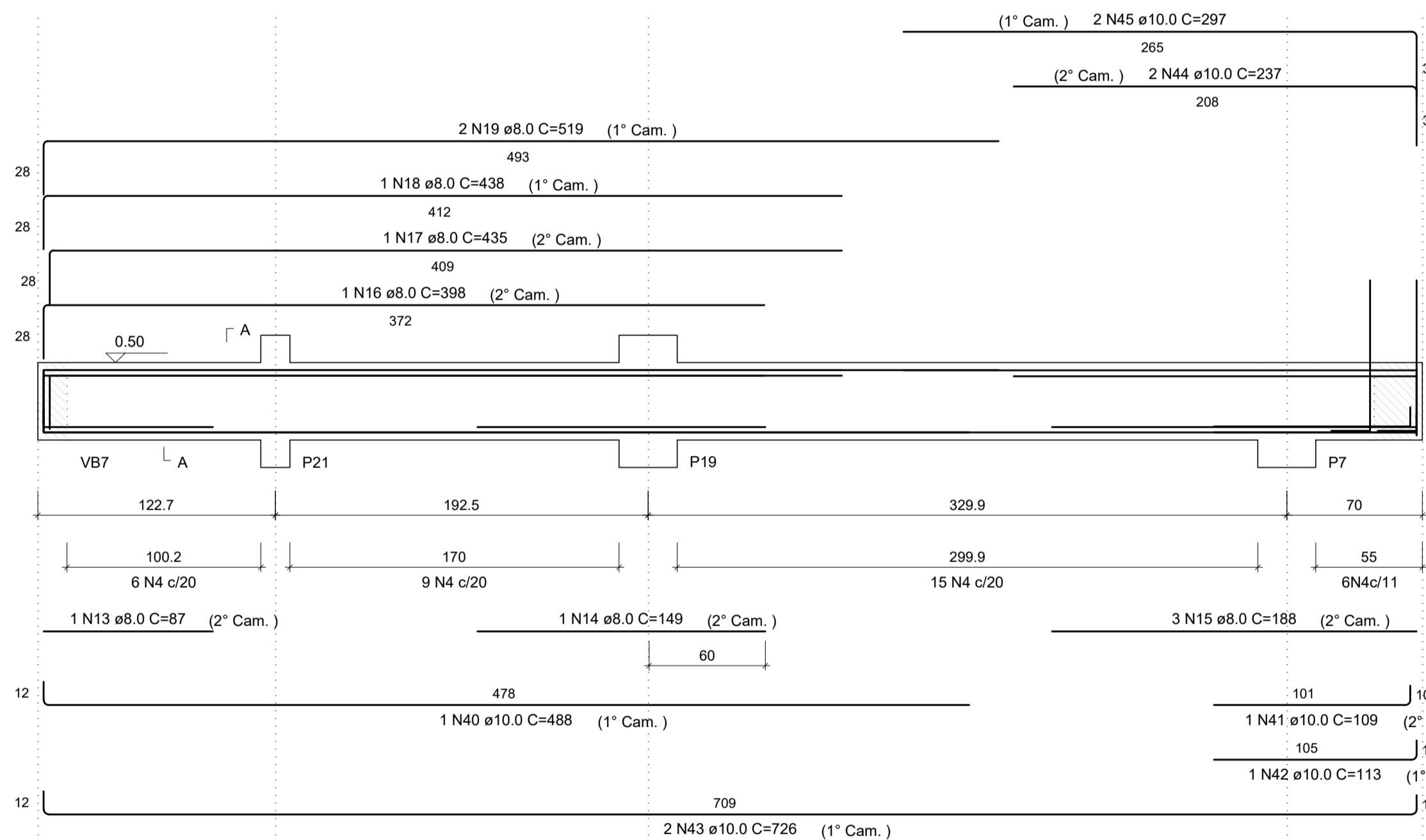
10 N4 ø6.3 C=98



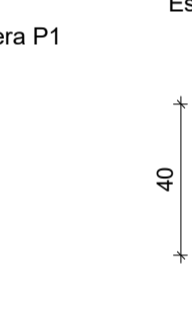
4 N3 ø6.3 c/12 C=88



VB18
Escala 1:25



SEÇÃO A-A
Escala 1:20



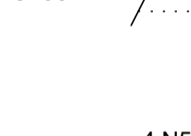
ESPERA P1
Escala 1:20



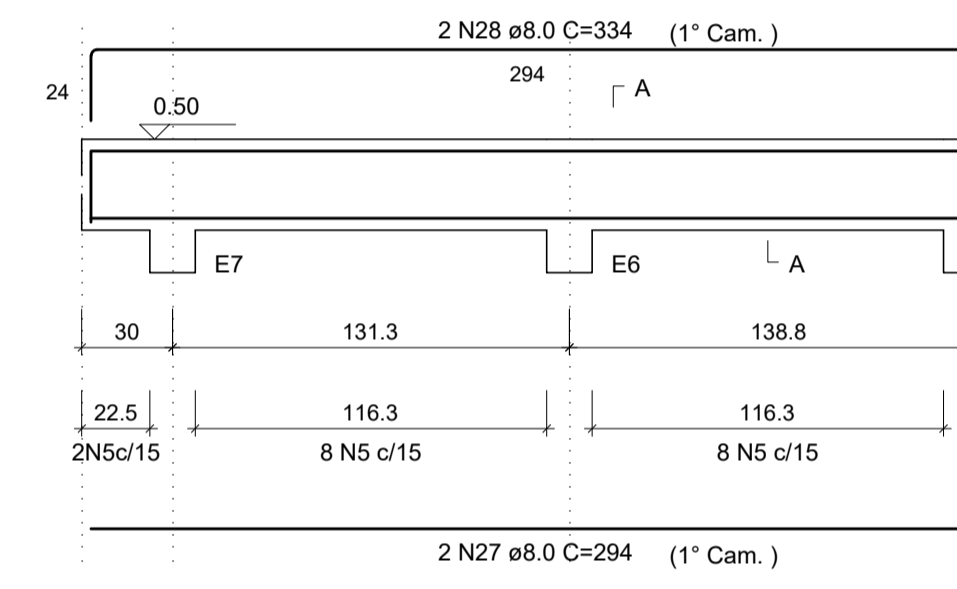
36 N4 ø6.3 C=98



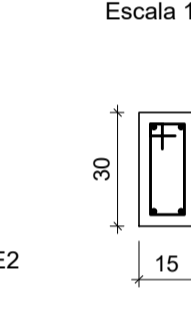
4 N5 ø6.3 c/12 C=78



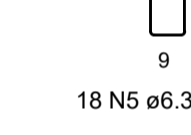
VB27
Escala 1:25



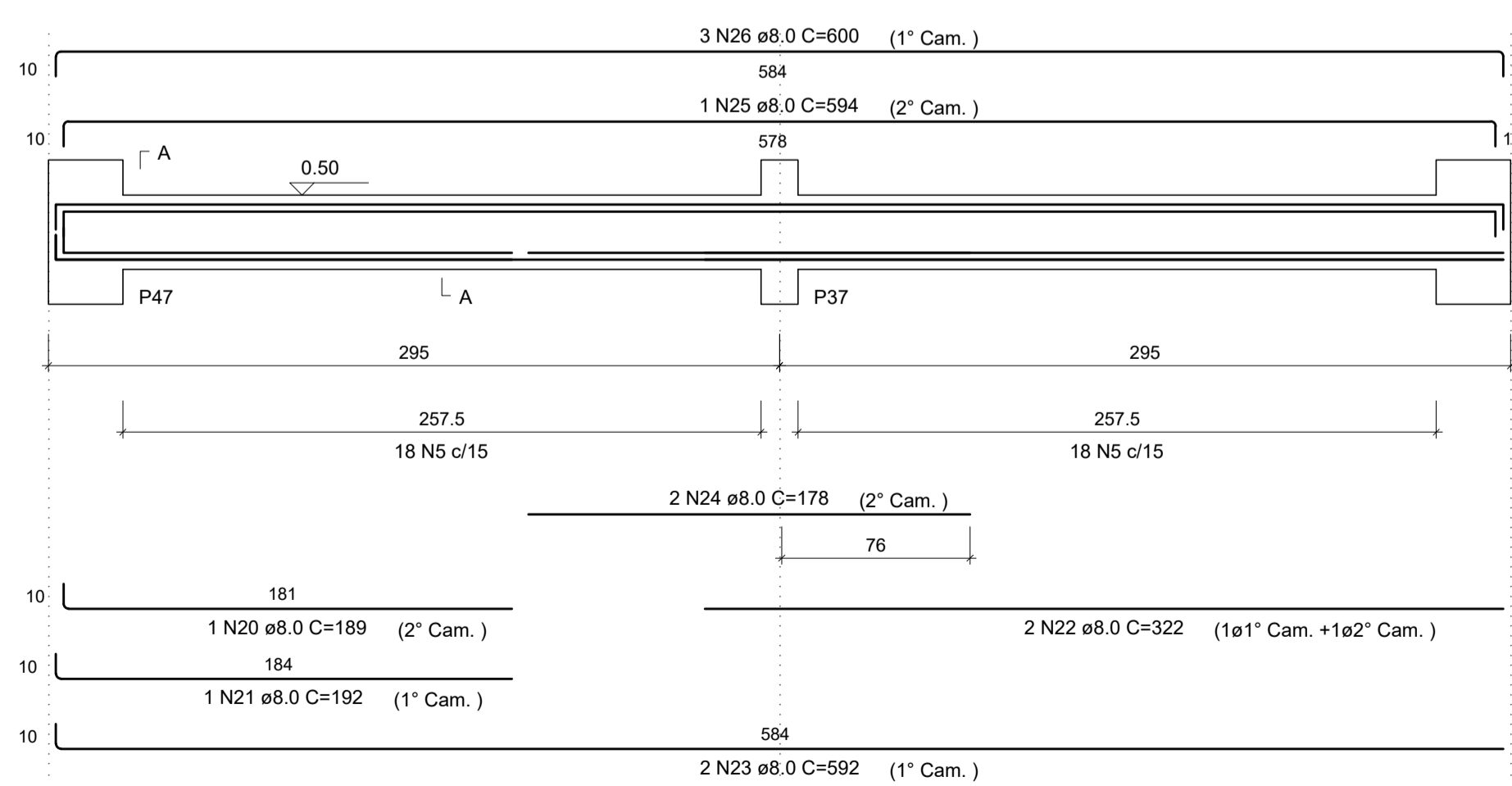
SEÇÃO A-A
Escala 1:20



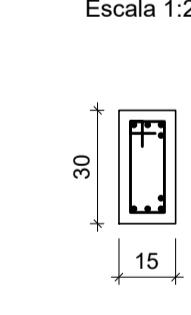
18 N5 ø6.3 C=78



VB24
Escala 1:25



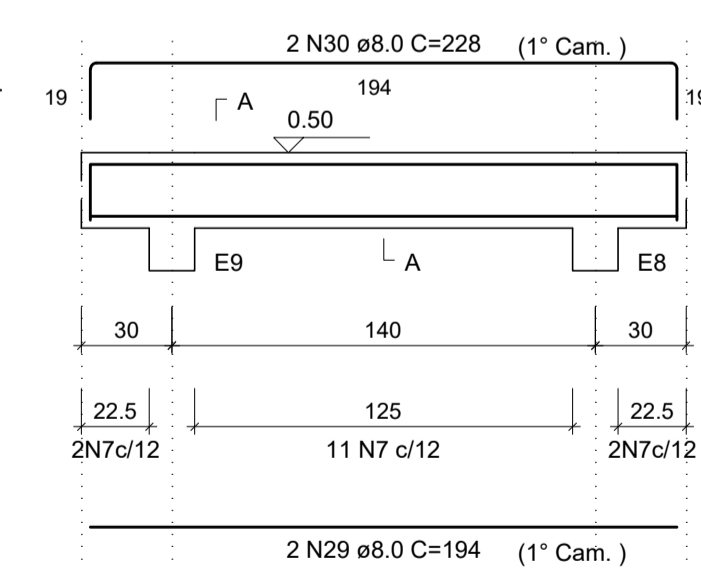
SEÇÃO A-A
Escala 1:20



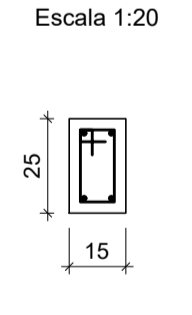
36 N5 ø6.3 C=78



VB30
Escala 1:25



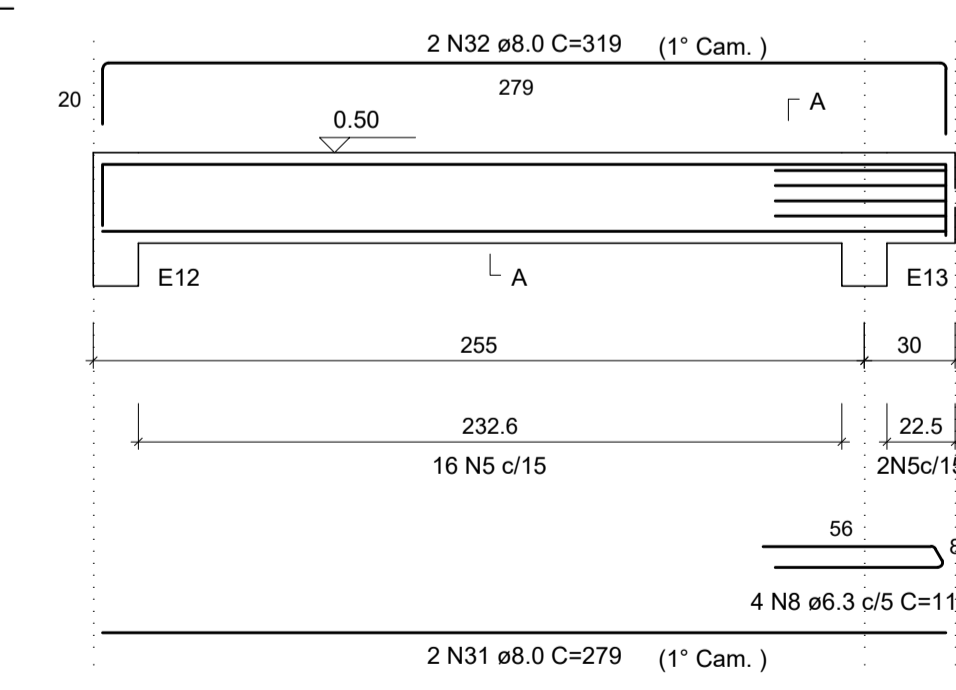
SEÇÃO A-A
Escala 1:20



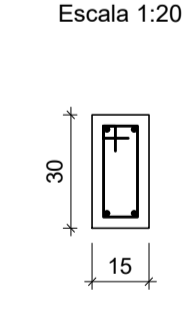
15 N7 ø6.3 C=68



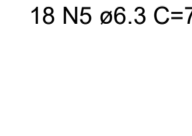
VB36
Escala 1:25



SEÇÃO A-A
Escala 1:20



18 N5 ø6.3 C=78



RELAÇÃO DO AÇO

AÇO	N	DIAM (mm)	QUANT	C.UNIT (cm)	C.TOTAL (cm)
CA50	1	6.3	33	108	3564
	2	6.3	1	81	81
	3	6.3	4	88	352
	4	6.3	46	98	4508
	5	6.3	76	78	5928
	6	6.3	1	76	76
	7	6.3	15	68	1020
	8	6.3	4	116	464
	9	8.0	2	120	240
	10	8.0	4	123	492
	11	8.0	1	165	165
	12	8.0	4	213	852
	13	8.0	1	87	87
	14	8.0	1	149	149
	15	8.0	3	188	564
	16	8.0	1	398	398
	17	8.0	1	435	435
	18	8.0	1	438	438
	19	8.0	2	519	1038
	20	8.0	1	189	189
	21	8.0	1	192	192
	22	8.0	2	322	644
	23	8.0	2	592	1184
	24	8.0	2	178	356
	25	8.0	1	594	594
	26	8.0	3	600	1800
	27	8.0	2	294	588
	28	8.0	2	334	668
	29	8.0	2	194	388
	30	8.0	2	228	456
	31	8.0	2	279	558
	32	8.0	2	319	638
	33	10.0	1	194	194
	34	10.0	1	248	248
	35	10.0	2	667	1334
	36	10.0	1	473	473
	37	10.0	2	515	1030
	38	10.0	2	754	1508
	39	10.0	12	96	1152
	40	10.0	1	488	488
	41	10.0	1	109	109
	42	10.0	1	113	113
	43	10.0	2	726	1452
	44	10.0	2	237	474
	45	10.0	2	297	594
	46	10.0	2	249	498
	47	10.0	2	164	328
	48	10.0	2	268	536

RESUMO DO AÇO

AÇO	DIAM (mm)	C.TOTAL (m)	QUANT + 10% (Barras)	UNIT	PESO + 10% (kg)
CA50	6.3	159.9	15	12 m	43
	8.0	131.1	13	12 m	56.9
	10.0	105.3	10	12 m	71.4

PESO TOTAL (kg)	171.4
-----------------	-------

Volume de concreto (C-25) = 1.74 m³
Área de forma = 26.25 m²

CLIENTE: Prefeitura Municipal de Pouso Alegre

PROJETO: **DAC Engenharia**
Rua Miguel Vianna, nº 81, Sala 12
Bairro Morro Chic
CEP: 37500-080 - Itajubá / MG
Tel: (35) 3623-5720
www.dacengenharia.com.br

GERÊNCIA DE PROJETOS: DENIS DE SOUZA SILVA CREA: MG-127.216/D
COORDENAÇÃO DE PROJETOS: ALOISIO CAETANO FERREIRA CREA: MG-97.132/D
RESPONSÁVEL TÉCNICO: ENG. ELÉTRICO ADRIANO M. CAMPOS CREA: MG-187.842/D
PROJETO: FLÁVIA C. BARBOSA E WILLIAM BARADEL LARI
DESENHO: WILLIAM BARADEL LARI

EMPREENDIMENTO: REFORMA E AMPLIAÇÃO DO CEIM ANNA VIANA DE ANDRADE

ENDEREÇO: RUA CORONEL BRITO FILHO, Nº 621 - BAIRRO FÁTIMA I
POUSO ALEGRE - MINAS GERAIS

ASSUNTO: DETALHAMENTO DA ARMAÇÃO
VIGAS BALDRAME

DISCIPLINA: ESTRUTURAL
FASE DO PROJETO: EXECUTIVO
FOLHA Nº: 13

DATA INICIAL: 02/08/2019 | ESCALA: INDICADO | REVISÃO: R01 | ARQUIVO: DAC-PMPA-ANA-PE-EST-R01.DWG