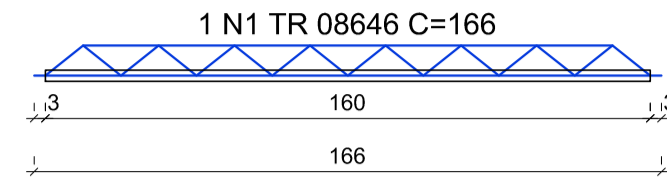
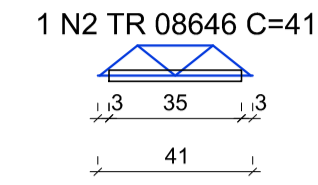


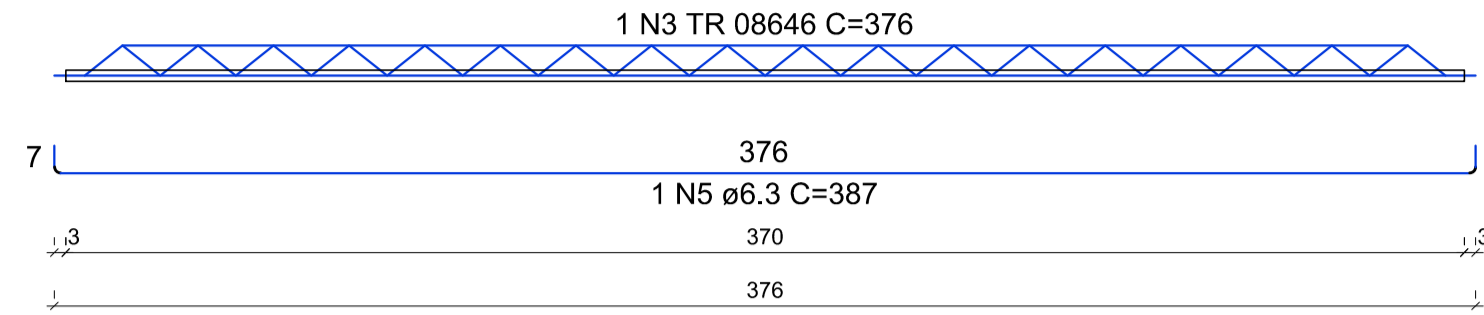
VT1a (27 unidades)  
(L1)  
ESC 1:20



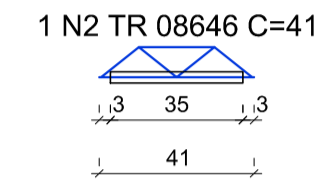
VT2a (9 unidades)  
(L2)  
ESC 1:20



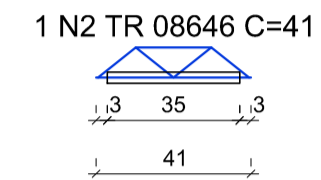
VT3a (13 unidades)  
(L3)  
ESC 1:20



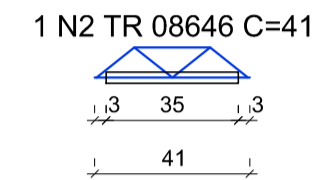
VT7a (4 unidades)  
(L7)  
ESC 1:20



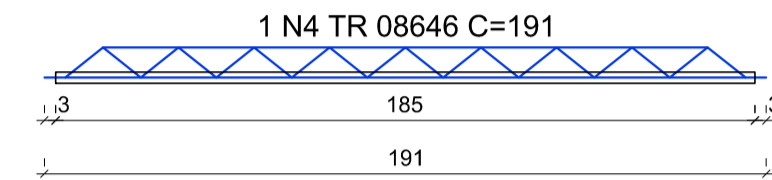
VT4a (9 unidades)  
(L4)  
ESC 1:20



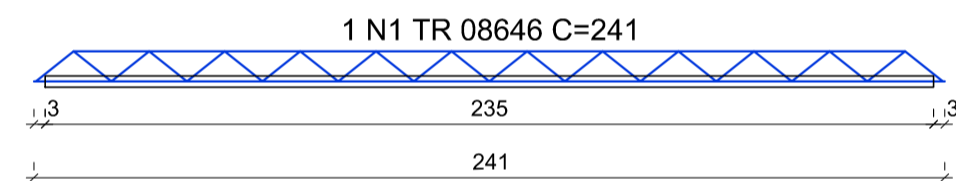
VT5a (4 unidades)  
(L5)  
ESC 1:20



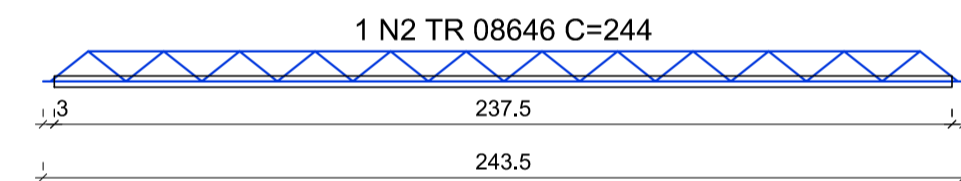
VT6a (13 unidades)  
(L6)  
ESC 1:20



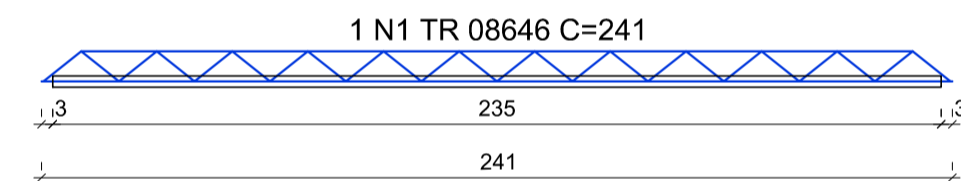
VT1a (1 unidades)  
(L1)  
ESC 1:20



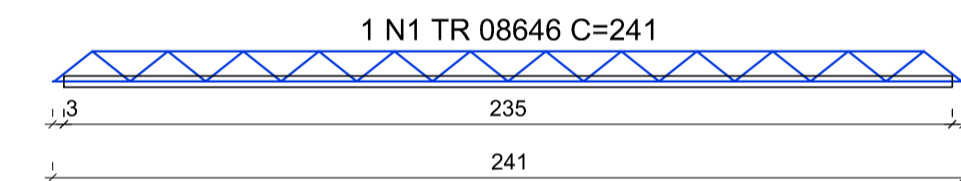
VT1b (8 unidades)  
(L1)  
ESC 1:20



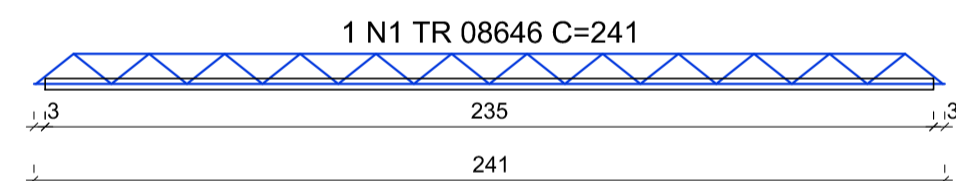
VT2a (9 unidades)  
(L2)  
ESC 1:20



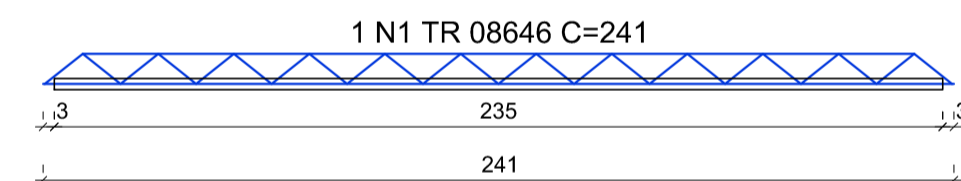
VT3a (9 unidades)  
(L3)  
ESC 1:20



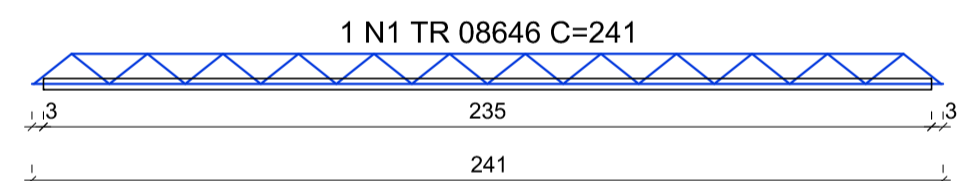
VT4a (9 unidades)  
(L4)  
ESC 1:20



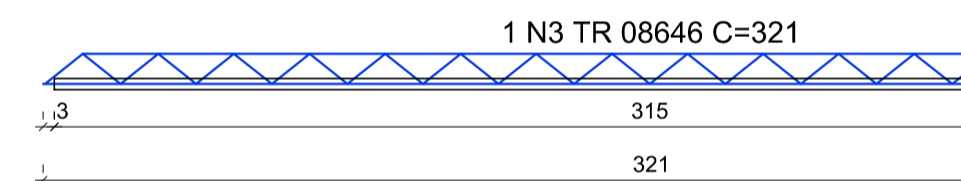
VT5a (9 unidades)  
(L5)  
ESC 1:20



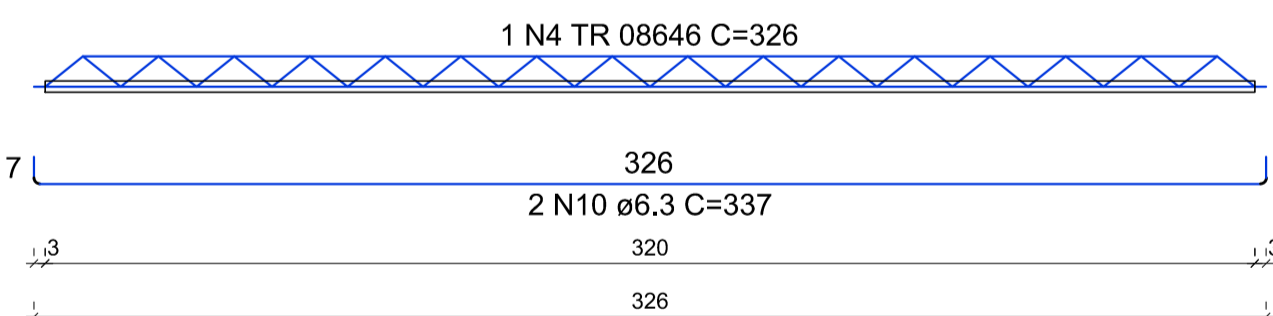
VT6a (9 unidades)  
(L6)  
ESC 1:20



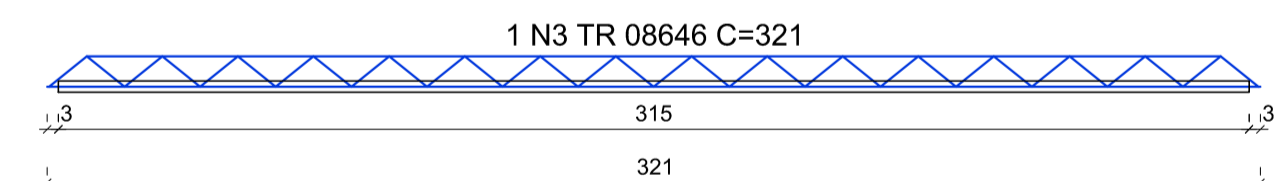
VT7a (7 unidades)  
(L7)  
ESC 1:20



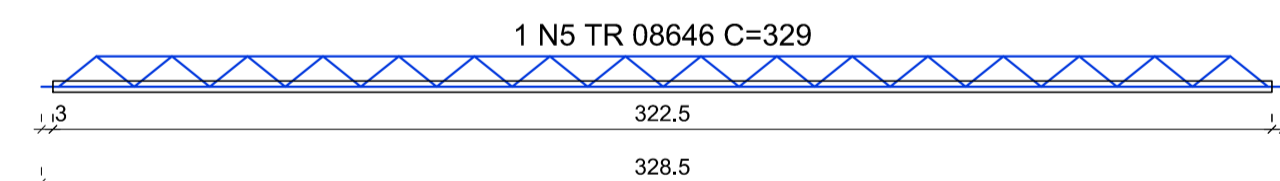
VT8a (7 unidades)  
(L8)  
ESC 1:20



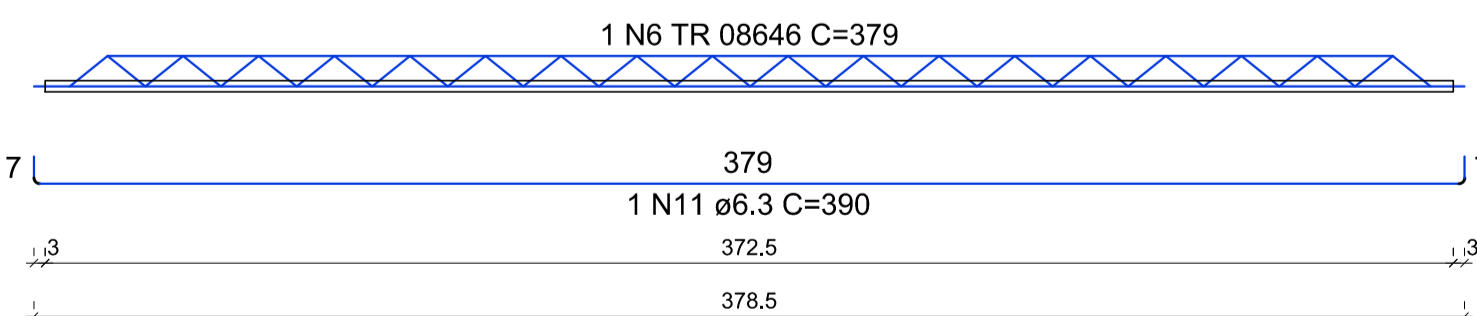
VT9a (10 unidades)  
(L9)  
ESC 1:20



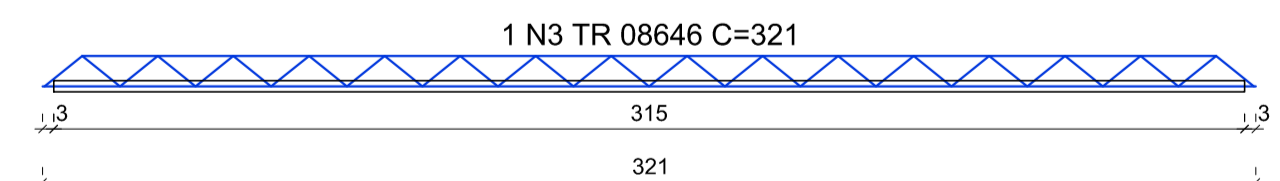
VT10a (9 unidades)  
(L10)  
ESC 1:20



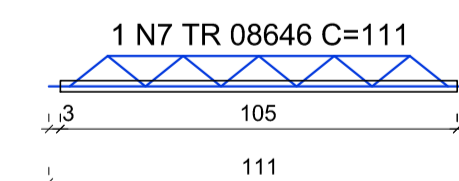
VT11a (9 unidades)  
(L11)  
ESC 1:20



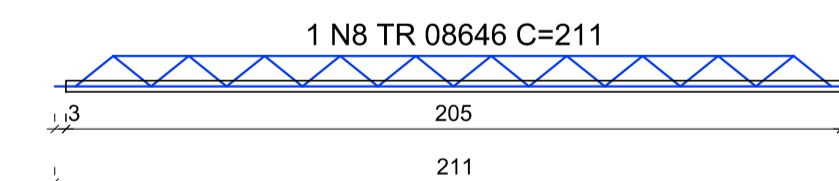
VT12a (13 unidades)  
(L12)  
ESC 1:20



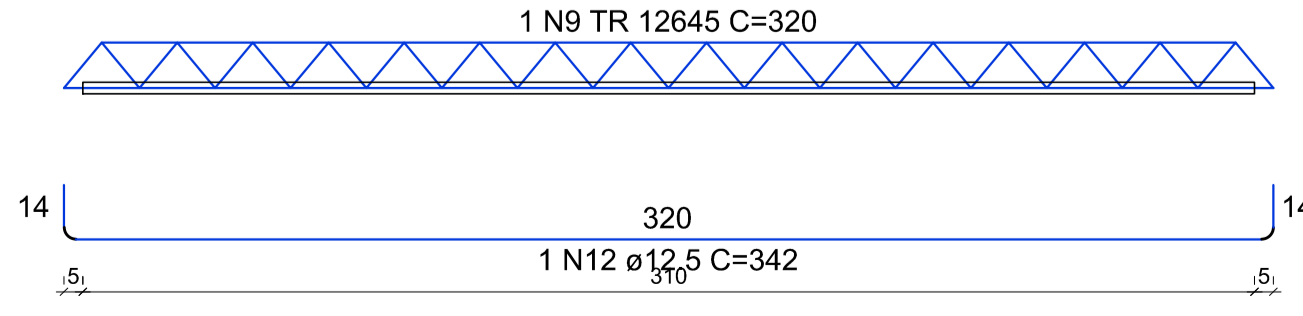
VT13a (9 unidades)  
(L13)  
ESC 1:20



VT14a (9 unidades)  
(L14)  
ESC 1:20



VT15a (9 unidades)  
(L15)  
ESC 1:20



RELAÇÃO DO AÇO

AÇO	N	DIAM (mm)	QUANT	C.UNIT (cm)	C.TOTAL (cm)
27xVT1a					
9xVT4a					
4xVT7a					
9xVT2a					
4xVT5a					
13xVT3a					
13xVT6a					

RESUMO DO AÇO

AÇO	DIAM (mm)	C.TOTAL (m)	QUANT + 10% (Barras)	PESO + 10% (kg)
CA50	6.3	50.3	5	13.5
CA60	TR 08646	129.2	-	136.6
<b>PESO TOTAL (kg)</b>				
CA50		13.5		
CA60		136.6		

Volume de concreto (C-25) = 0.00 m³  
Área de forma = 0.00 m²

RELAÇÃO DO AÇO

AÇO	N	DIAM (mm)	QUANT	C.UNIT (cm)	C.TOTAL (cm)
8xVT1b					
9xVT3a					
9xVT6a					
10xVT9a					
13xVT12a					
9xVT15a					
9xVT2a					
9xVT5a					
7xVT7a					
9xVT10a					
9xVT11a					
9xVT14a					

AÇO	N	DIAM (mm)	QUANT	C.UNIT (cm)	C.TOTAL (cm)
CA60	1	TR 08646	46	241	11086
	2	TR 08646	8	244	1952
	3	TR 08646	30	321	9630
	4	TR 08646	7	326	2282
	5	TR 08646	9	329	2961
	6	TR 08646	9	379	3411
	7	TR 08646	9	111	999
	8	TR 08646	9	211	1899
	9	TR 12645	9	320	2880
CA50	10	6.3	14	337	4718
	11	6.3	9	390	3510
	12	12.5	9	342	3078

RESUMO DO AÇO

AÇO	DIAM (mm)	C.TOTAL (m)	QUANT + 10% (Barras)	PESO + 10% (kg)
CA50	6.3	82.3	8	22.1
	12.5	30.8	3	32.6
CA60	TR 08646	342.2	-	361.7
	TR 12645	28.8	-	28.2
<b>PESO TOTAL (kg)</b>				
CA50		54.8		
CA60		389.9		

Volume de concreto (C-25) = 0.00 m³  
Área de forma = 0.00 m²

REV. 00	06/07/20	EMISSÃO INICIAL	DAC
REVISÃO:	DATA :	DESCRIÇÃO:	RESP.:



 Rua Miguel Vianna, nº 81, Sala 12 Bairro Morro Chic CEP: 37500-080 - Itajubá / MG Tel: (35) 3623-5720 www.dacengenharia.com.br	GERÊNCIA DE PROJETOS	DENIS DE SOUZA SILVA	CREA: MG-127.216/D
	COORDENAÇÃO DE PROJETOS	ALOISIO CAETANO FERREIRA	CREA: MG-97.132/D
	RESPONSÁVEL TÉCNICO	ENGR. CIVIL FLÁVIA C. BARBOSA	CREA: MG-187.842/D
	DESENHO	WILLIAM BARADEL LARI	

EMPREENDIMENTO  
REFORMA E AMPLIAÇÃO DO AEROPORTO DE POUSO ALEGRE

ENDEREÇO	AVENIDA JOÃO BATISTA PIFFER, B. JARDIM AEROPORTO POUSO ALEGRE - MINAS GERAIS	DISCIPLINA	ESTRUTURAL
ASSUNTO	PROJETO ESTRUTURAL DE CONCRETO ARMADO DETALHAMENTO DAS VIGOTAS PRÉ MOLDADAS	FASE DO PROJETO	EXECUTIVO
		FOLHA Nº	19/19