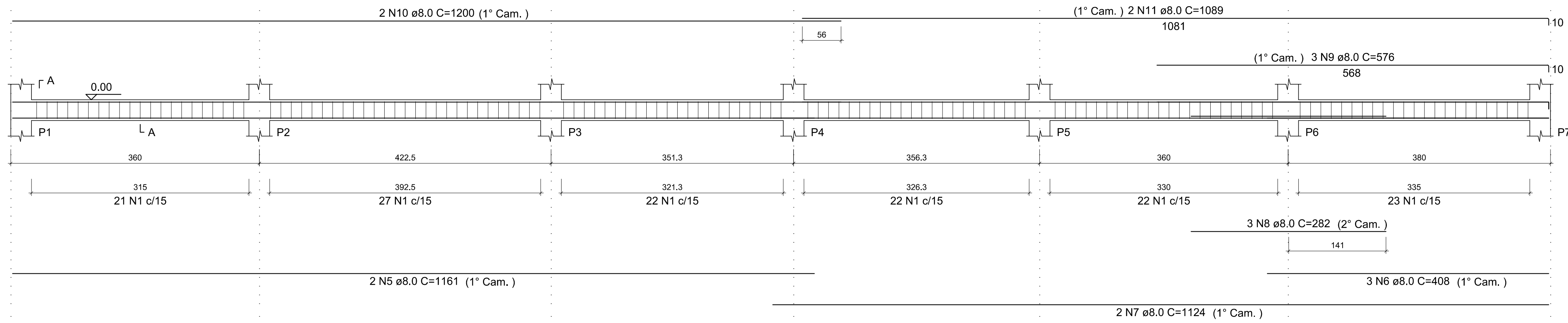
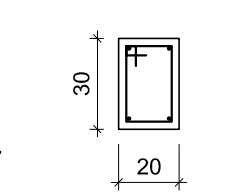


VB1  
Escala 1:40



SEÇÃO A-A  
Escala 1:25



SEÇÃO A-A  
Escala 1:25



RELAÇÃO DO AÇO

AÇO	N	DIAM (mm)	QUANT	C.UNIT (cm)	C.TOTAL (cm)
CA50	1	6.3	161	92	14812
	2	6.3	243	82	19926
	3	6.3	20	102	2040
	4	6.3	19	112	2128
	5	8.0	2	1161	2322
	6	8.0	3	408	1224
	7	8.0	2	1124	2248
	8	8.0	3	282	846
	9	8.0	3	576	1728
	10	8.0	2	1200	2400
	11	8.0	2	1089	2178
	12	8.0	2	370	740
	13	8.0	2	388	776
	14	8.0	4	340	1360
	15	8.0	7	356	2492
	16	8.0	4	355	1420
	17	8.0	4	350	1400
	18	8.0	1	376	376
	19	8.0	3	382	1146
	20	8.0	4	395	1580
	21	8.0	1	405	405
	22	8.0	3	411	1233
	23	8.0	2	733	1466
	24	8.0	2	751	1502
	25	8.0	4	265	1060
	26	8.0	4	283	1132
	27	8.0	3	348	1044
	28	8.0	5	415	2075
	29	8.0	5	431	2155
	30	10.0	4	340	1360
	31	10.0	3	365	1095
	32	10.0	1	170	170
	33	10.0	2	359	718
	34	10.0	5	390	1950
	35	10.0	5	409	2045

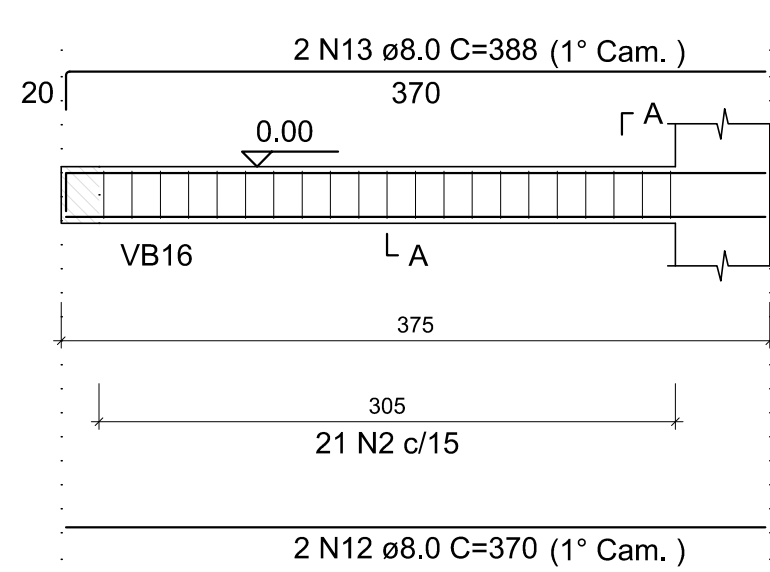
RESUMO DO AÇO

AÇO	DIAM (mm)	C.TOTAL (m)	QUANT + 10% (Barras)	PESO + 10% (kg)
CA50	6.3	389.1	36	104.7
	8.0	363.1	34	157.6
	10.0	73.4	7	49.8

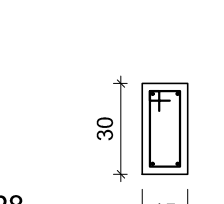
PESO TOTAL (kg)	
CA50	312.1

Volume de concreto (C-25) = 4.07 m³  
Área de forma = 59.07 m²

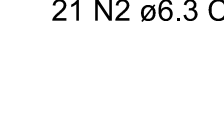
VB2  
Escala 1:40



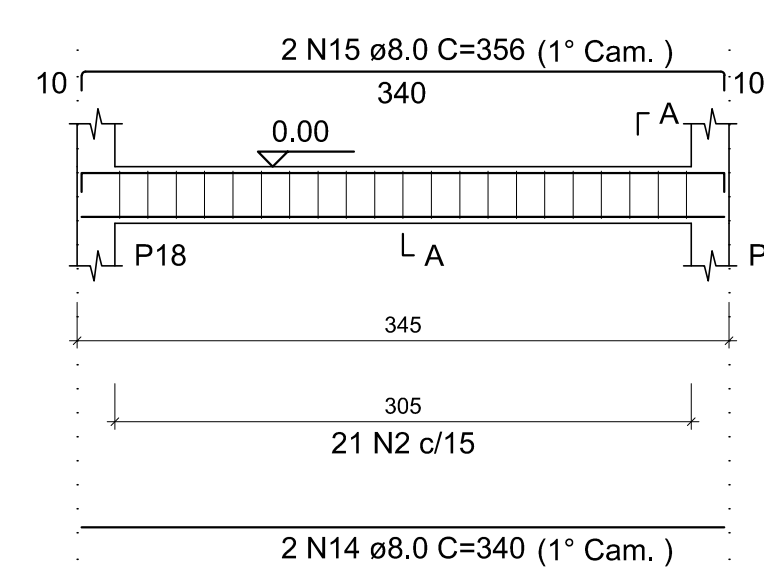
SEÇÃO A-A  
Escala 1:25



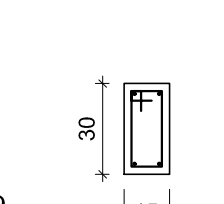
SEÇÃO A-A  
Escala 1:25



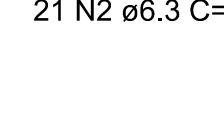
VB3  
Escala 1:40



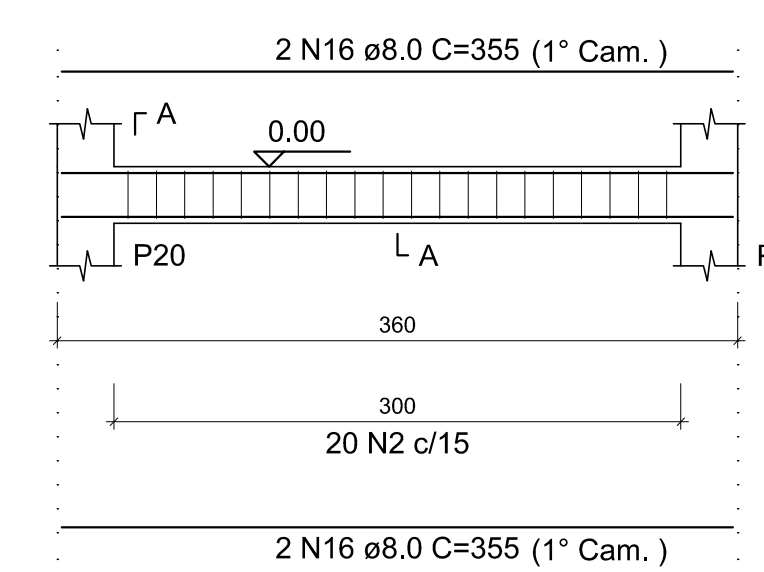
SEÇÃO A-A  
Escala 1:25



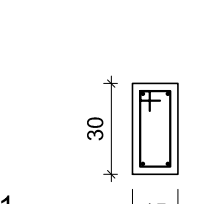
SEÇÃO A-A  
Escala 1:25



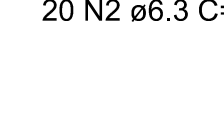
VB4  
Escala 1:40



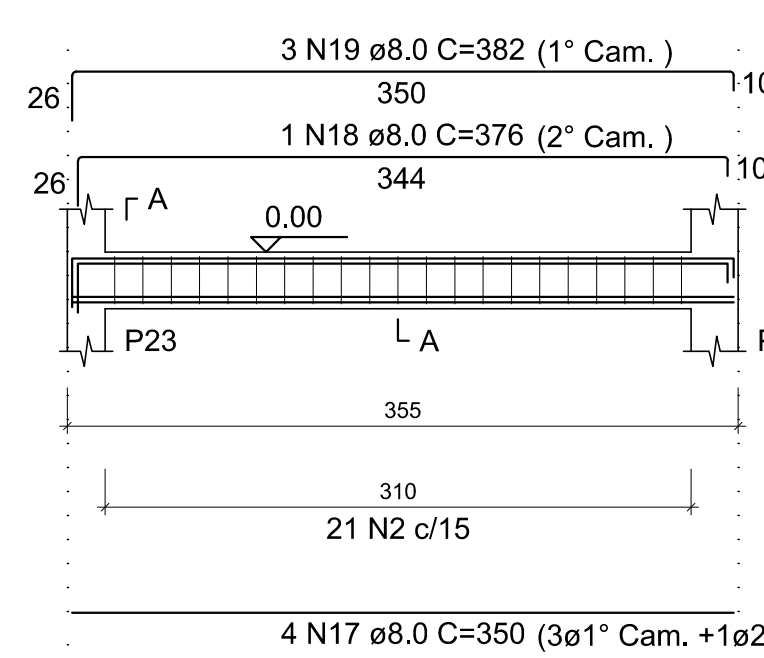
SEÇÃO A-A  
Escala 1:25



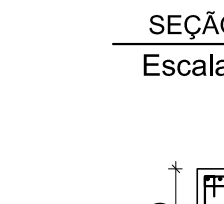
SEÇÃO A-A  
Escala 1:25



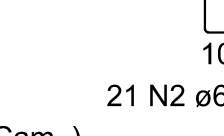
VB5  
Escala 1:40



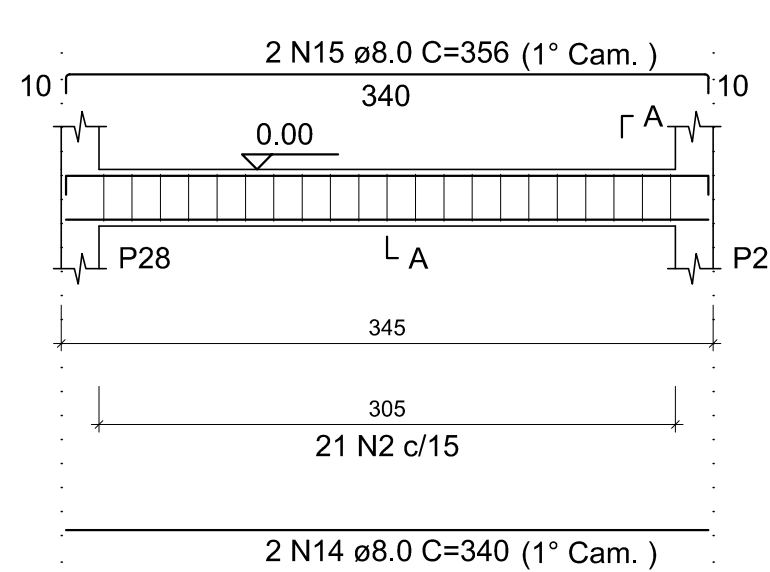
SEÇÃO A-A  
Escala 1:25



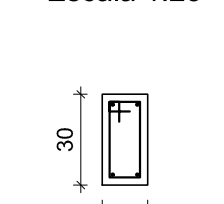
SEÇÃO A-A  
Escala 1:25



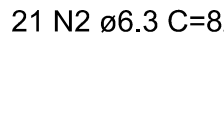
VB7  
Escala 1:40



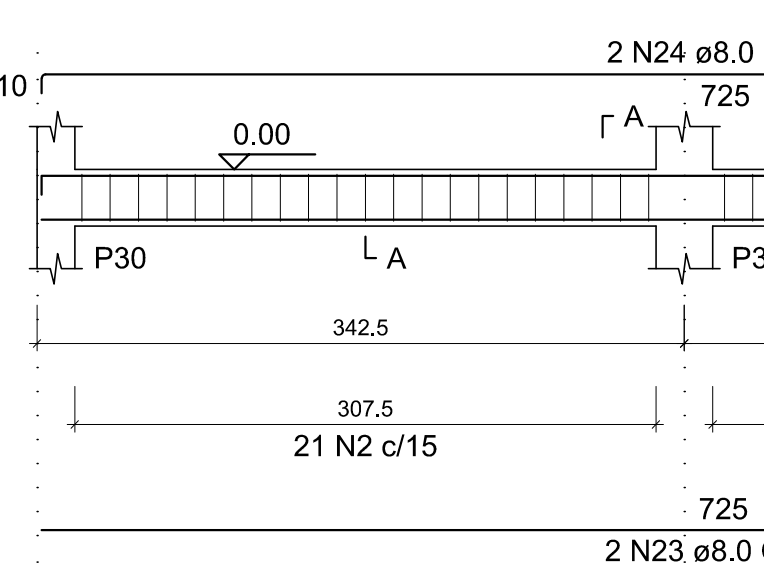
SEÇÃO A-A  
Escala 1:25



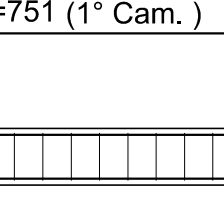
SEÇÃO A-A  
Escala 1:25



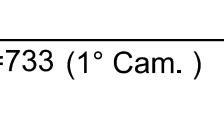
VB8  
Escala 1:40



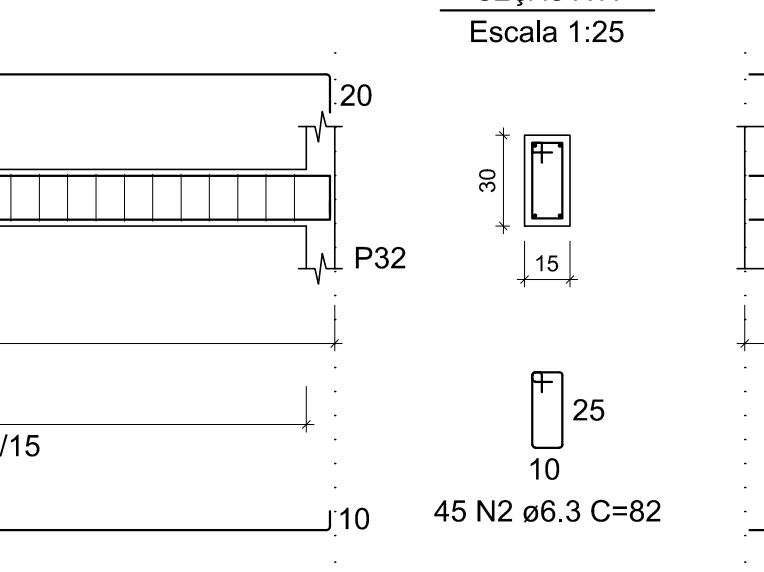
SEÇÃO A-A  
Escala 1:25



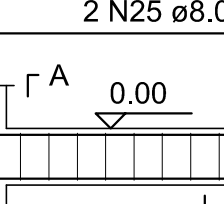
SEÇÃO A-A  
Escala 1:25



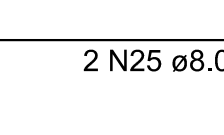
VB9  
Escala 1:40



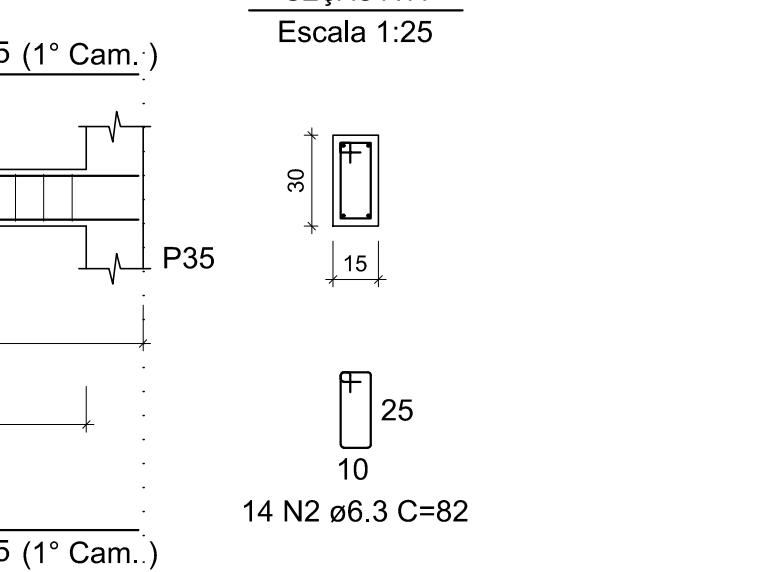
SEÇÃO A-A  
Escala 1:25



SEÇÃO A-A  
Escala 1:25



VB9  
Escala 1:40



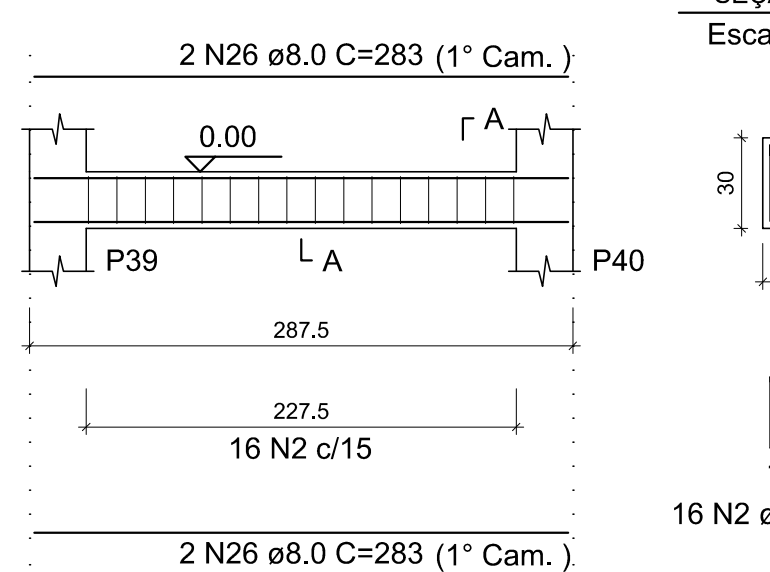
SEÇÃO A-A  
Escala 1:25



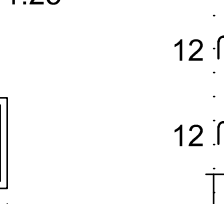
SEÇÃO A-A  
Escala 1:25



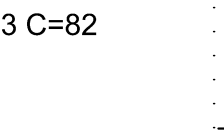
VB11  
Escala 1:40



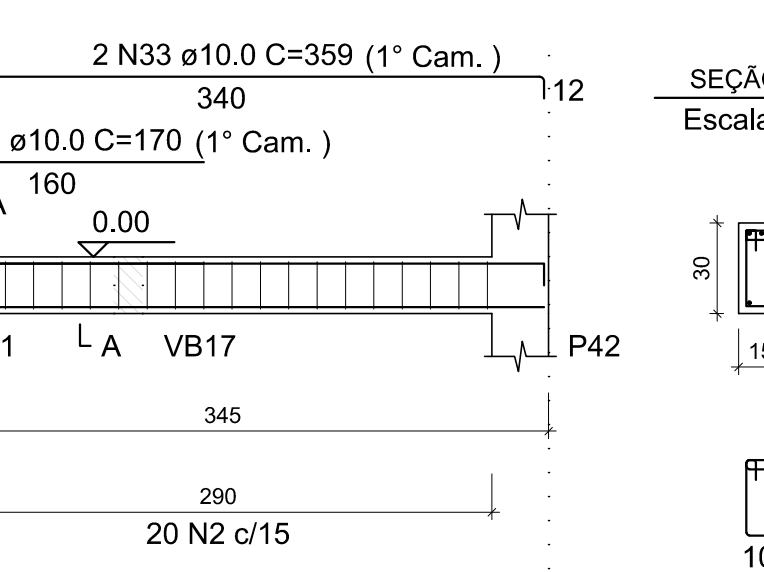
SEÇÃO A-A  
Escala 1:25



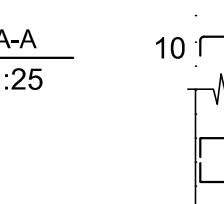
SEÇÃO A-A  
Escala 1:25



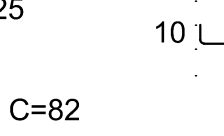
VB12  
Escala 1:40



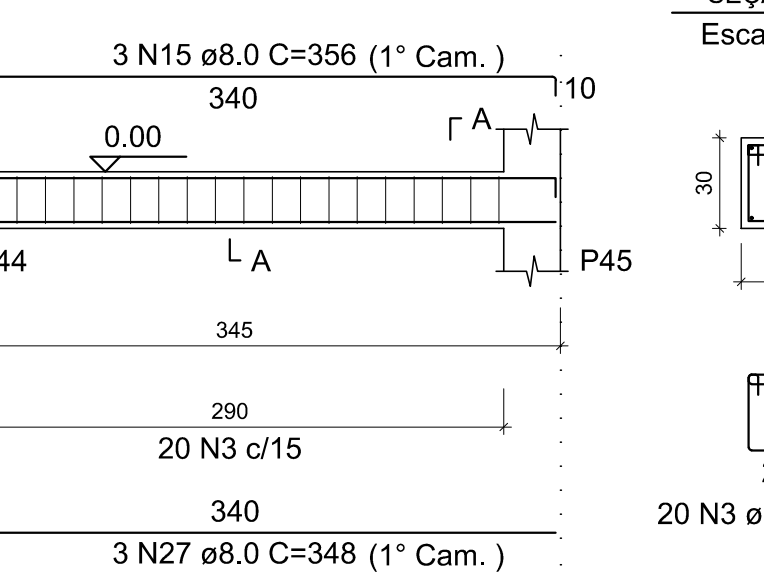
SEÇÃO A-A  
Escala 1:25



SEÇÃO A-A  
Escala 1:25



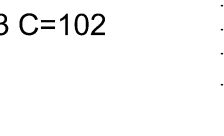
VB13  
Escala 1:40



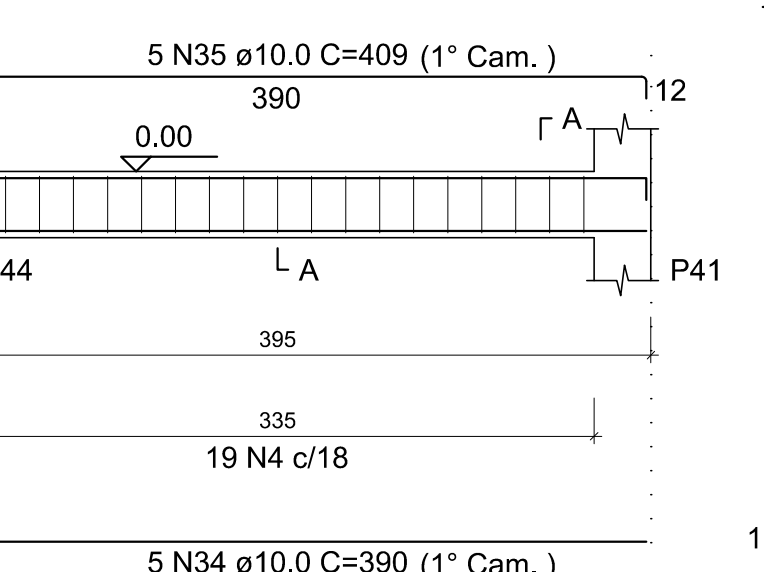
SEÇÃO A-A  
Escala 1:25



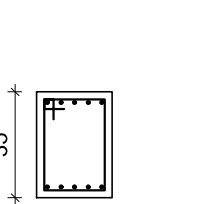
SEÇÃO A-A  
Escala 1:25



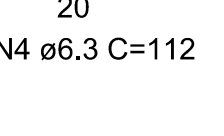
VB14  
Escala 1:40



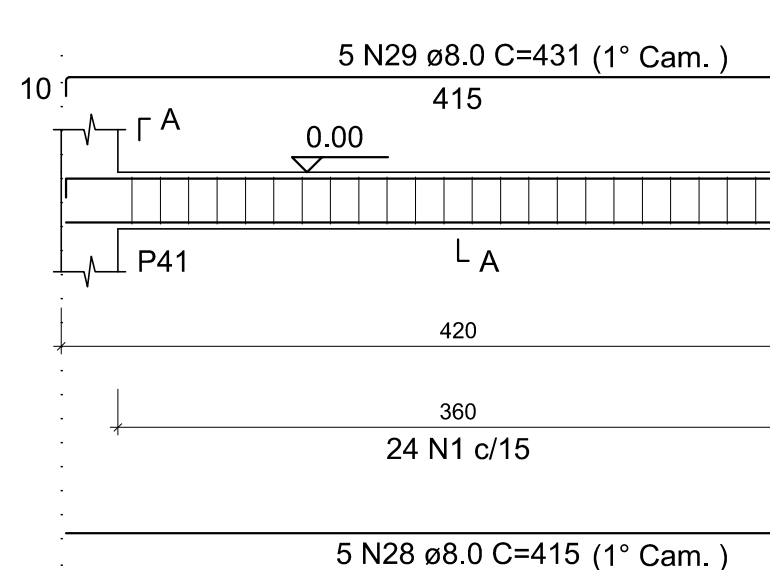
SEÇÃO A-A  
Escala 1:25



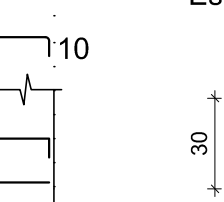
SEÇÃO A-A  
Escala 1:25



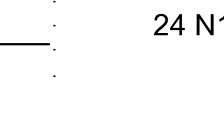
VB15  
Escala 1:40



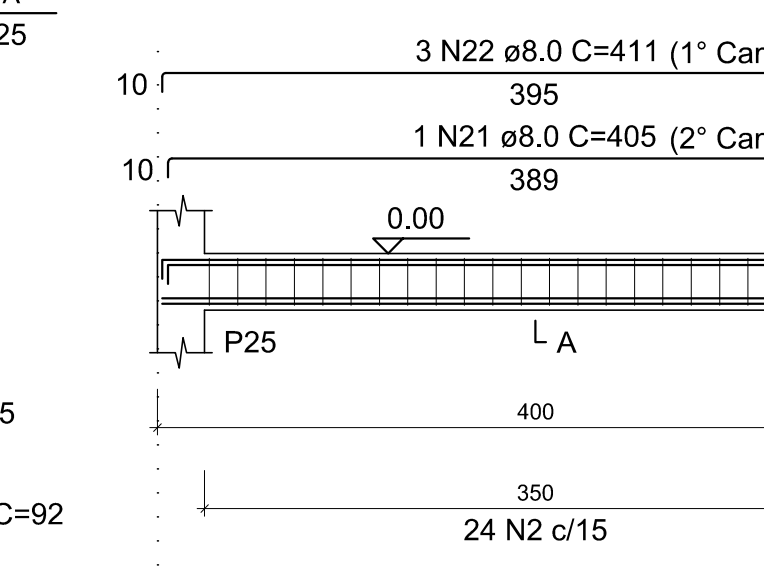
SEÇÃO A-A  
Escala 1:25



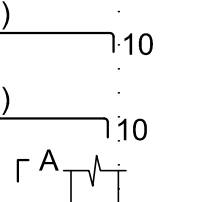
SEÇÃO A-A  
Escala 1:25



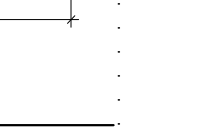
VB6  
Escala 1:40



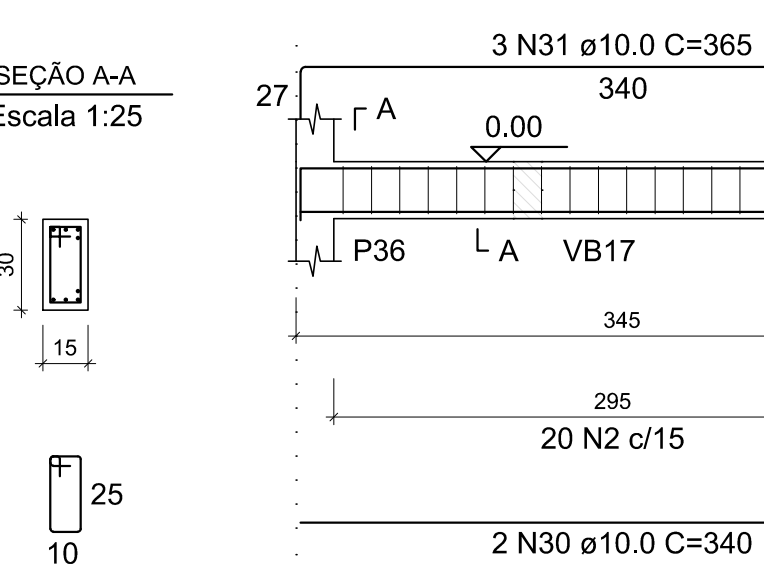
SEÇÃO A-A  
Escala 1:25



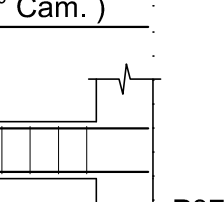
SEÇÃO A-A  
Escala 1:25



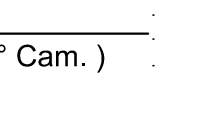
VB10  
Escala 1:40



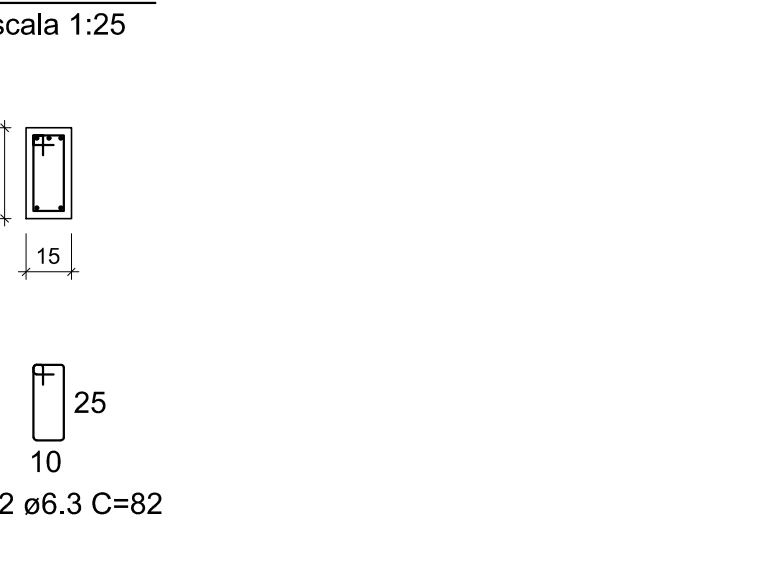
SEÇÃO A-A  
Escala 1:25



SEÇÃO A-A  
Escala 1:25



SEÇÃO A-A  
Escala 1:25



REV. 00	06/07/20	EMISSÃO INICIAL	DAC
REVISÃO: DATA :	DESCRICÃO:		RESP.:



**DAC Engenharia**  
Rua Miguel Vianna, nº 81, Sala 12  
Bairro Morro Chic  
CEP: 37500-080 - Itajubá / MG  
Tel: (35) 3623-5720  
www.dacengenharia.com.br

GERÊNCIA DE PROJETOS  
DENIS DE SOUZA SILVA CREA: MG-127.216/D

COORDENAÇÃO DE PROJETOS  
ALOISIO CAETANO FERREIRA CREA: MG-97.132/D

RESPONSÁVEL TÉCNICO  
ENGR. CIVIL FLÁVIA C. BARBOSA CREA: MG-187.842/D

PROJETO  
WILLIAM BARADEL LARI

DESENHO  
WILLIAM BARADEL LARI

**REFORMA E AMPLIAÇÃO DO AEROPORTO DE POUSO ALEGRE**

ENDEREÇO  
AVENIDA JOÃO BATISTA PIFFER, B. JARDIM AEROPORTO  
POUSO ALEGRE - MINAS GERAIS

ASSUNTO  
PROJETO ESTRUTURAL DE CONCRETO ARMADO  
DETALHAMENTO DAS VIGAS BALDRAME

DISCIPLINA  
ESTRUTURAL

FASE DO PROJETO  
EXECUTIVO

FOLHA Nº  
10/19

DATA INICIAL  
06/07/2020

ESCALA  
INDICADA

REVISÃO  
ROO

ARQUIVO  
DAC-PMPA-AER-PE-EST-ROO.DWG