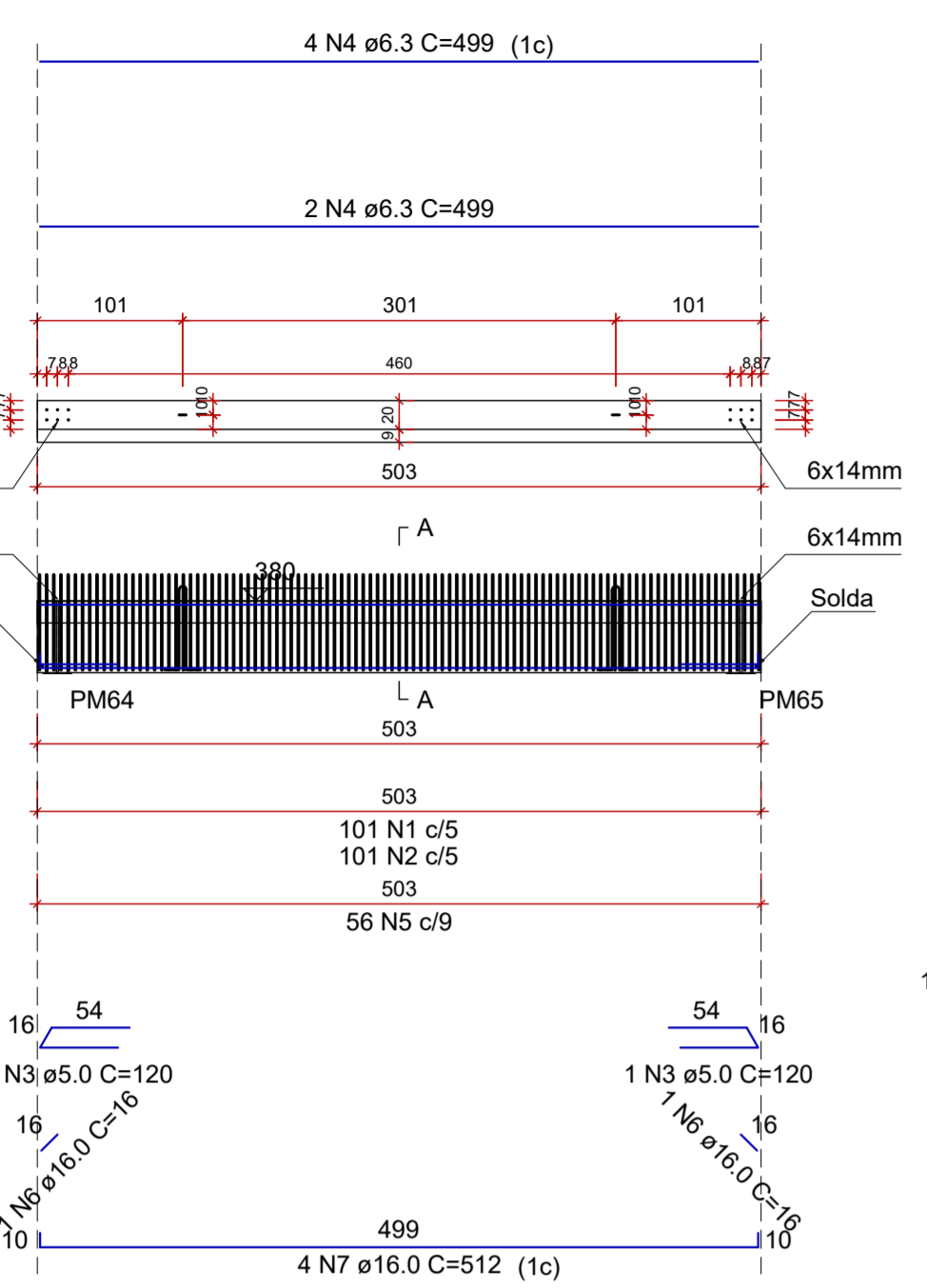
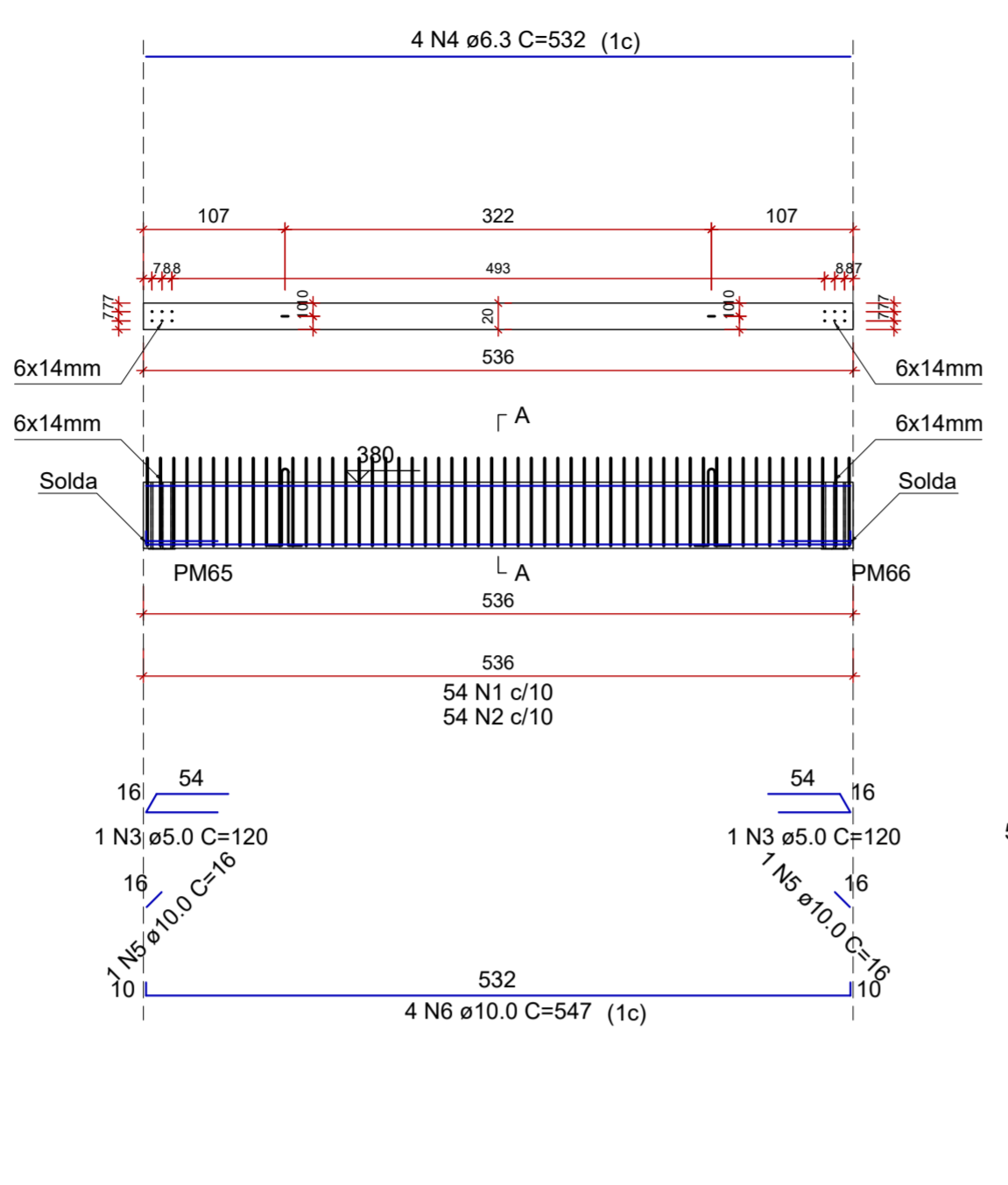


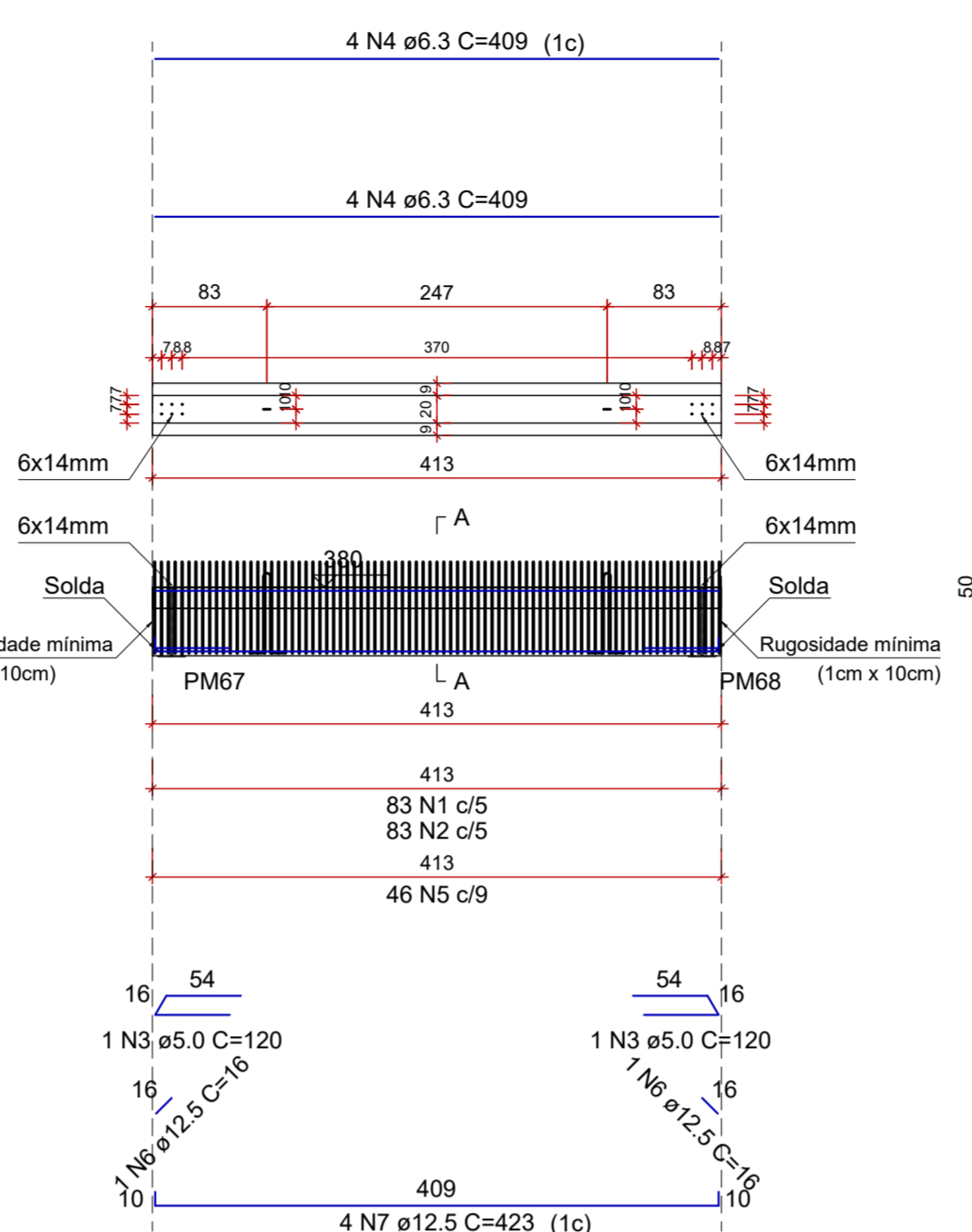
VC53
ESCALA 1:50



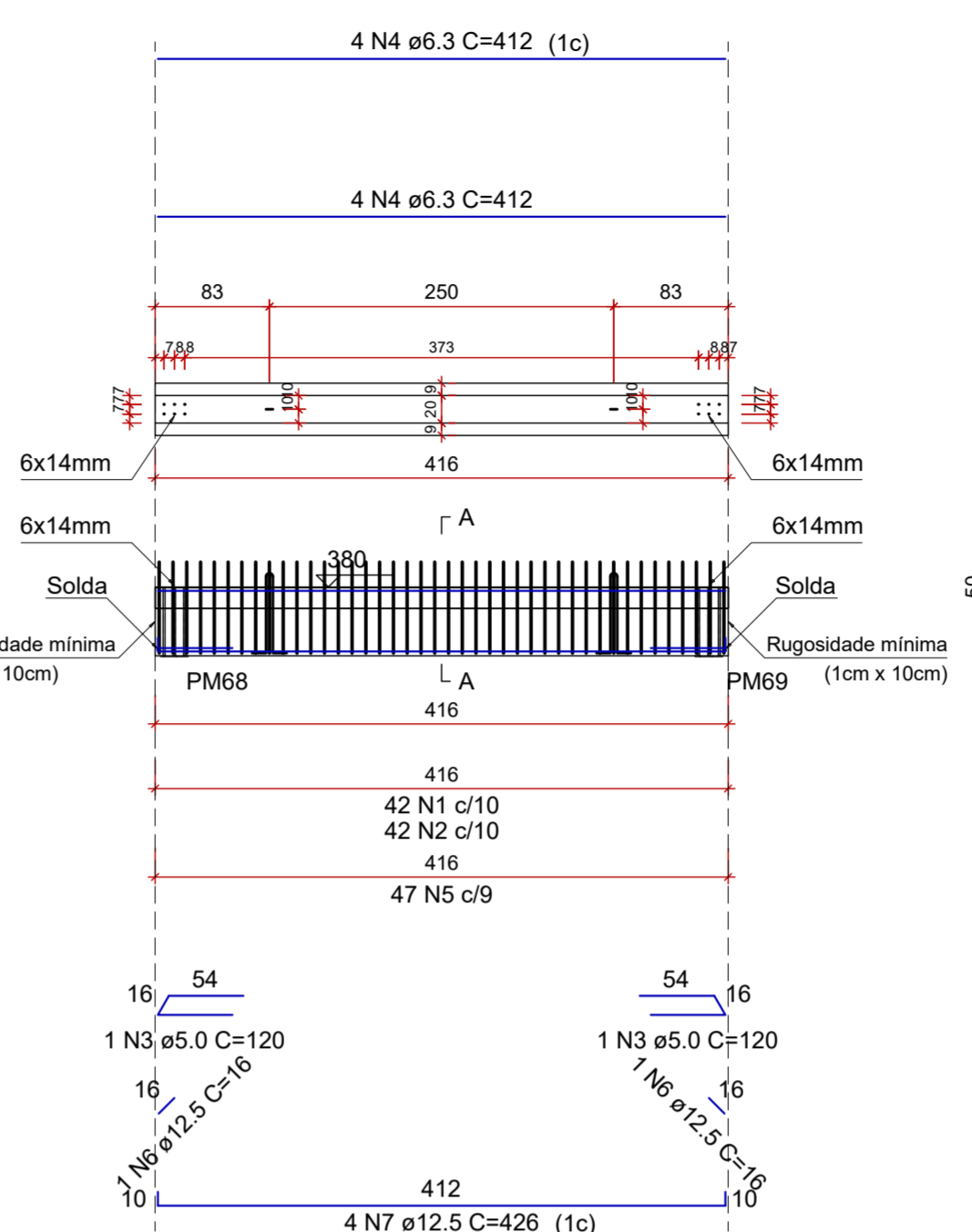
VC54
ESCALA 1:50



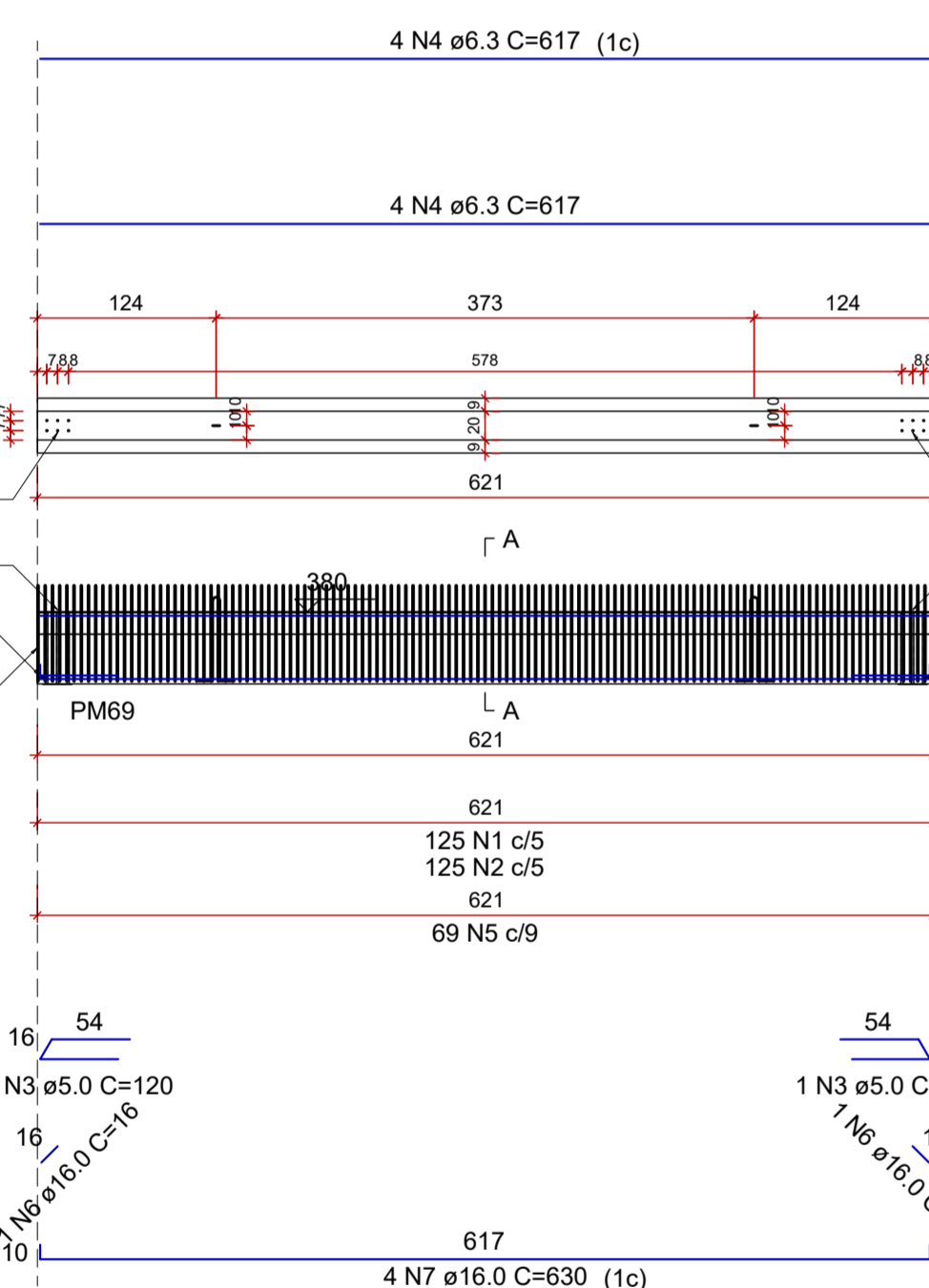
VC55
ESCALA 1:50



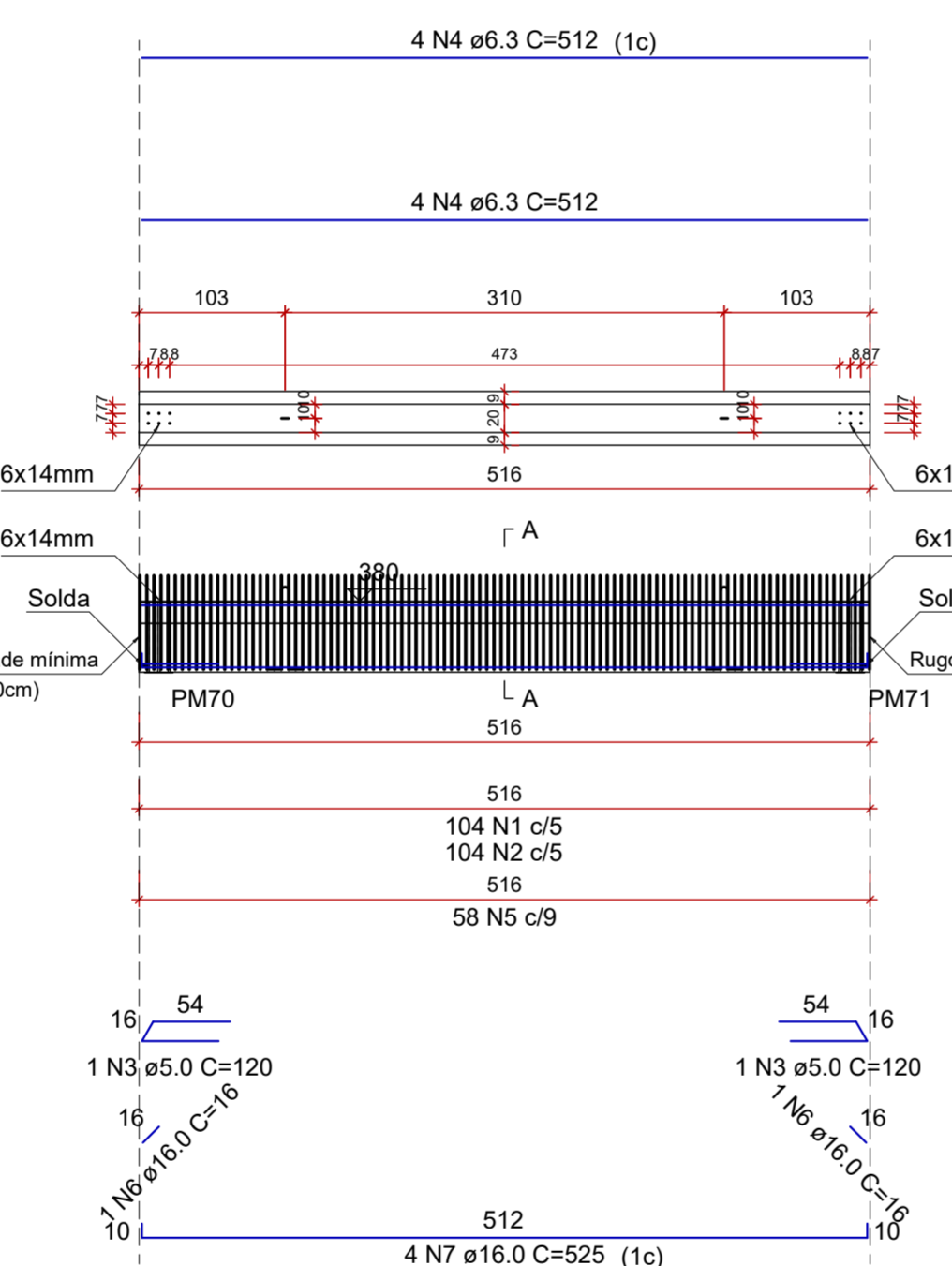
VC56
ESCALA 1:50



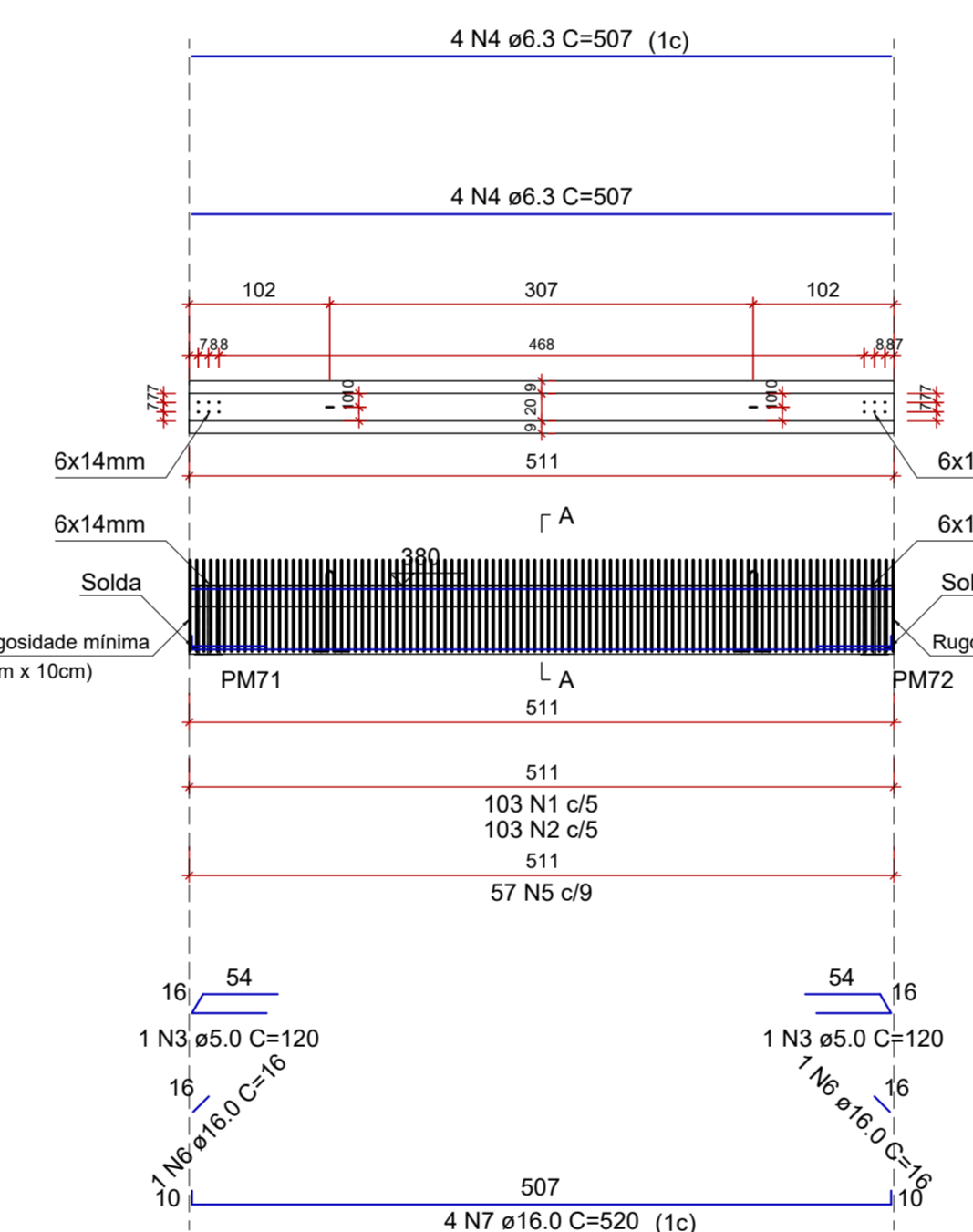
VC57
ESCALA 1:50



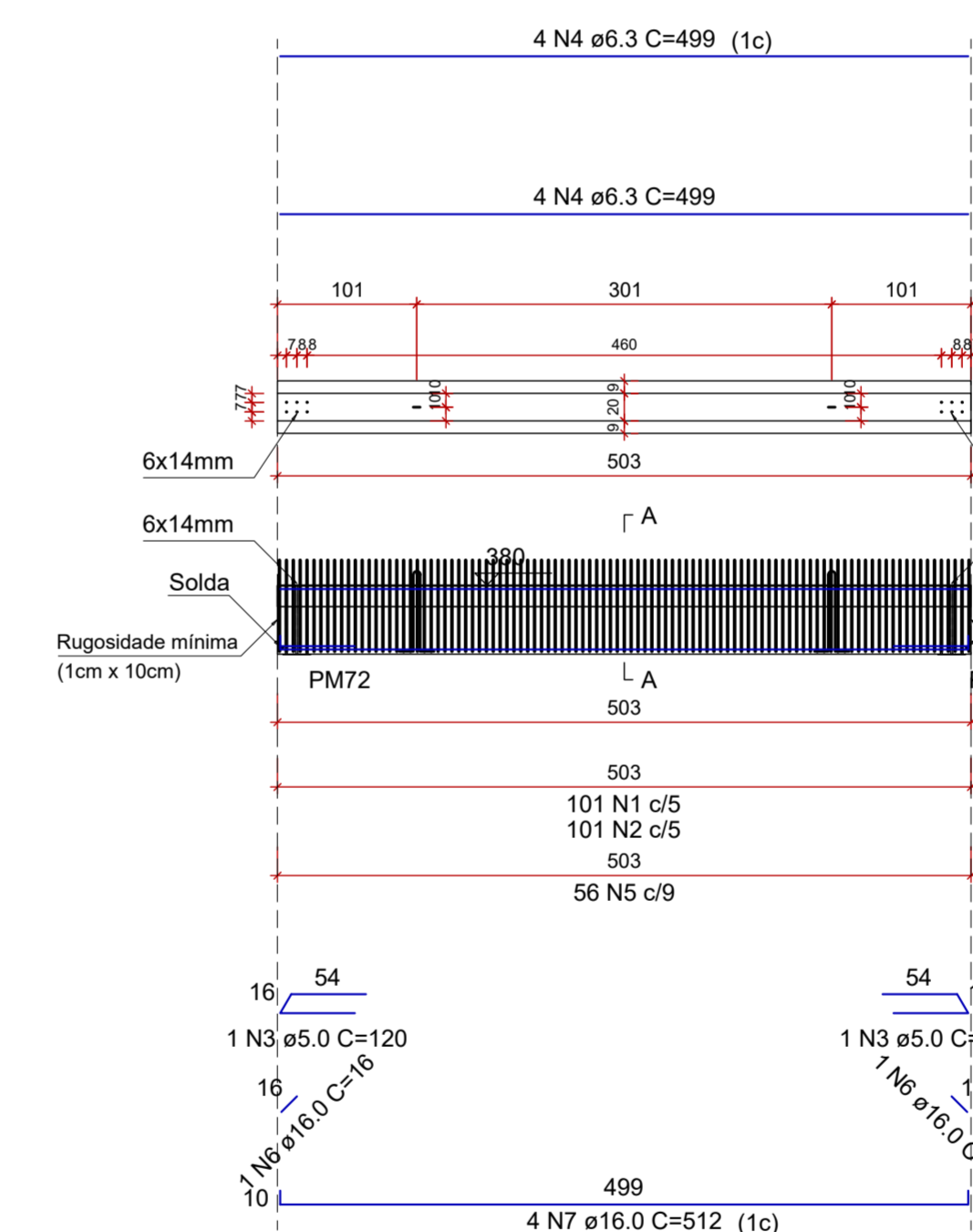
VC58
ESCALA 1:50



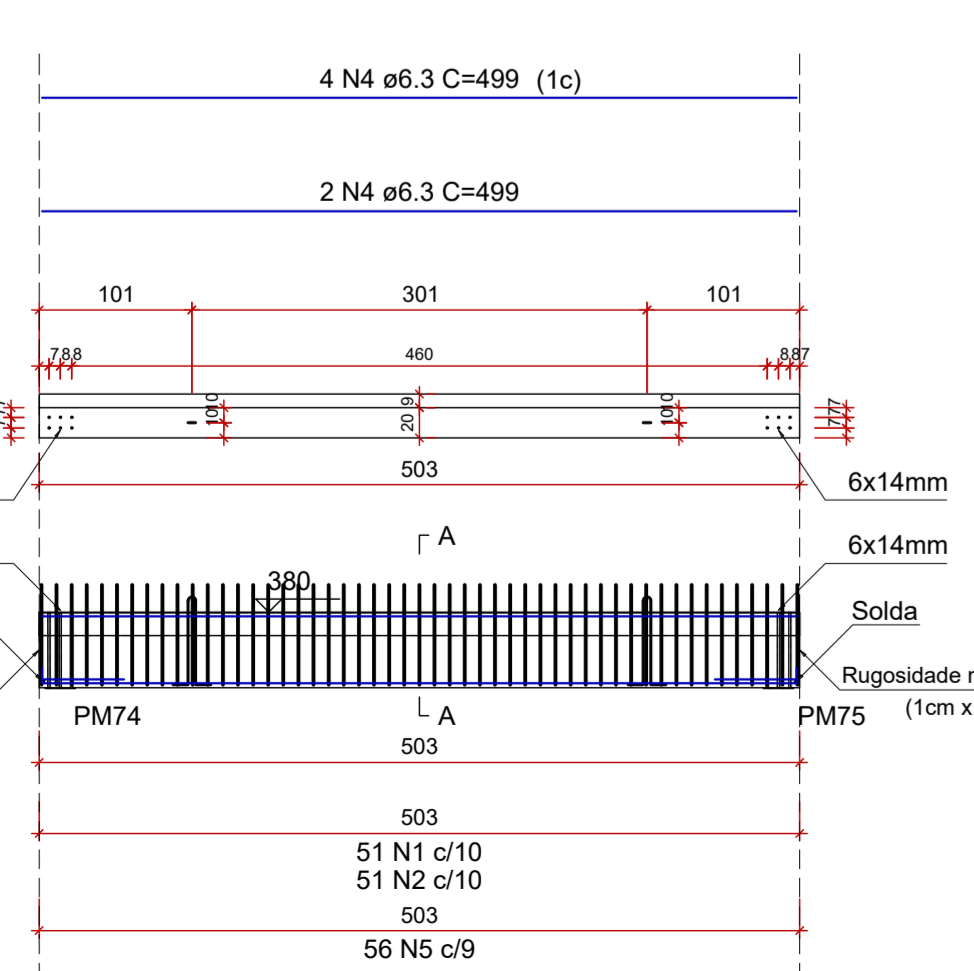
VC59
ESCALA 1:50



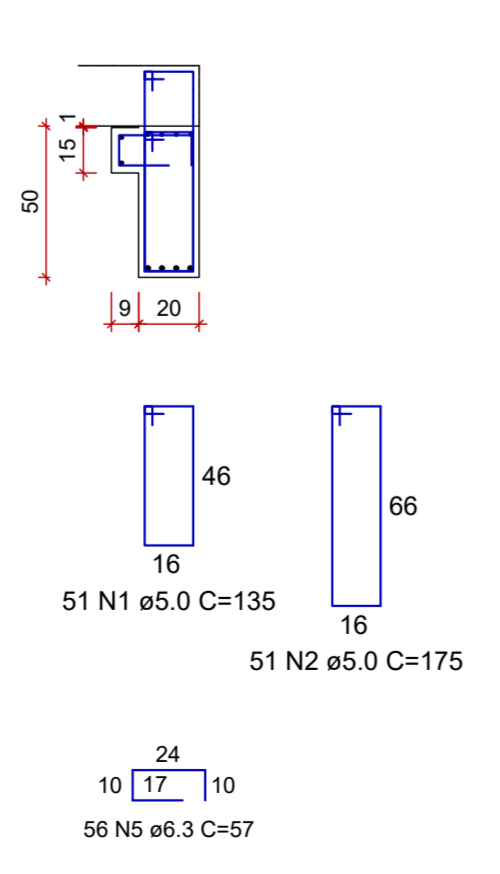
VC60
ESCALA 1:50



VC61
ESCALA 1:50



SEÇÃO A-A
ESCALA 1:25



RELAÇÃO DO AÇO

ELEMENTO	AÇO	N	DIAM (mm)	QUANT	C.UNIT (cm)	C.TOTAL (cm)
VC53	CA60	1	5.0	101	135	13635
	CA50	2	5.0	101	175	17675
	CA60	3	5.0	2	120	240
	CA50	4	6.3	6	499	2994
	CA50	5	6.3	56	57	3192
	CA50	6	16.0	2	16	32
	CA50	7	16.0	4	512	2048
VC54	CA60	1	5.0	54	135	7290
	CA50	2	5.0	54	175	9450
	CA60	3	5.0	2	120	240
	CA50	4	6.3	4	532	2128
	CA50	5	10.0	2	16	32
	CA50	6	10.0	4	547	2188
	CA60	1	5.0	83	135	11205
VC55	CA60	2	5.0	83	175	14525
	CA50	3	5.0	2	120	240
	CA50	4	6.3	6	409	3272
	CA50	5	6.3	46	80	3680
	CA50	6	12.5	2	16	32
	CA50	7	12.5	4	423	1692
	CA60	1	5.0	42	135	5670
VC56	CA60	2	5.0	42	175	7350
	CA60	3	5.0	2	120	240
	CA50	4	6.3	8	412	3296
	CA50	5	6.3	47	80	3760
	CA50	6	12.5	2	16	32
	CA50	7	12.5	4	426	1704
	CA60	1	5.0	125	135	16875
VC57	CA60	2	5.0	125	175	21875
	CA60	3	5.0	2	120	240
	CA50	4	6.3	8	617	4936
	CA50	5	6.3	69	80	5520
	CA50	6	16.0	2	16	32
	CA50	7	16.0	4	630	2520
	CA60	1	5.0	104	135	14040
VC58	CA60	2	5.0	104	175	18200
	CA60	3	5.0	2	120	240
	CA50	4	6.3	8	512	4096
	CA50	5	6.3	58	80	4640
	CA50	6	16.0	2	16	32
	CA50	7	16.0	4	525	2100
	CA60	1	5.0	103	135	13905
VC59	CA60	2	5.0	103	175	18025
	CA60	3	5.0	2	120	240
	CA50	4	6.3	6	507	4056
	CA50	5	6.3	57	80	4560
	CA50	6	16.0	2	16	32
	CA50	7	16.0	4	520	2080
	CA60	1	5.0	101	135	13635
VC60	CA60	2	5.0	101	175	17675
	CA60	3	5.0	2	120	240
	CA50	4	6.3	8	499	3992
	CA50	5	6.3	56	80	4480
	CA50	6	16.0	2	16	32
	CA50	7	16.0	4	512	2048
	CA60	1	5.0	51	135	6885
VC61	CA60	2	5.0	51	175	8925
	CA60	3	5.0	2	120	240
	CA50	4	6.3	6	499	2994
	CA50	5	6.3	56	57	3192
	CA50	6	10.0	2	16	32
	CA50	7	10.0	4	514	2056

RESUMO DO AÇO

AÇO	DIAM (mm)	C.TOTAL (m)	PESO + 10% (kg)
CA50	6.3	647.9	174.4
	10.0	43.1	29.2
	12.5	34.6	36.7
	16.0	109.6	190.2
CA60	5.0	2390	405.2

PESO TOTAL (kg)
CA50 430.5
CA60 405.2

Volume de concreto (C-30) = 5.46 m³

Relação das alças de içamento			
Qtd.	Aço	ø (mm)	C. Anc. (cm)
18	ASTM A36	10	48
			C. Unit. (cm) 138

EMPRESAMENTO

CONSTRUÇÃO DA UNIDADE DE PRONTO ATENDIMENTO

DISCIPLINA: ESTRUTURAL

FASE DO PROJETO: EXECUTIVO

FOLHA Nº: 34/72

CLIENTE: Prefeitura Municipal de Pouso Alegre

COORDENAÇÃO: ALOISIO CAETANO FERREIRA

RESPONSÁVEL TÉCNICO E AUTOR: DAC Engenharia

ENGR. CIVIL FLÁVIA BARBOSA CREA MG-18734/D

PROJETO: RUA PIRANGUINHO, B. SÃO JOÃO, POUSO ALEGRE - MINAS GERAIS

ASSUNTO: PROJETO ESTRUTURAL DETALHAMENTO DAS ARMAÇÕES VIGAS PM

DATA INICIAL: 31/01/2023

ESCALA: INDICADA

REVISÃO: R01

ARQUIVO: DAC-PMPA-UPA-PE-EST-R02.DWG