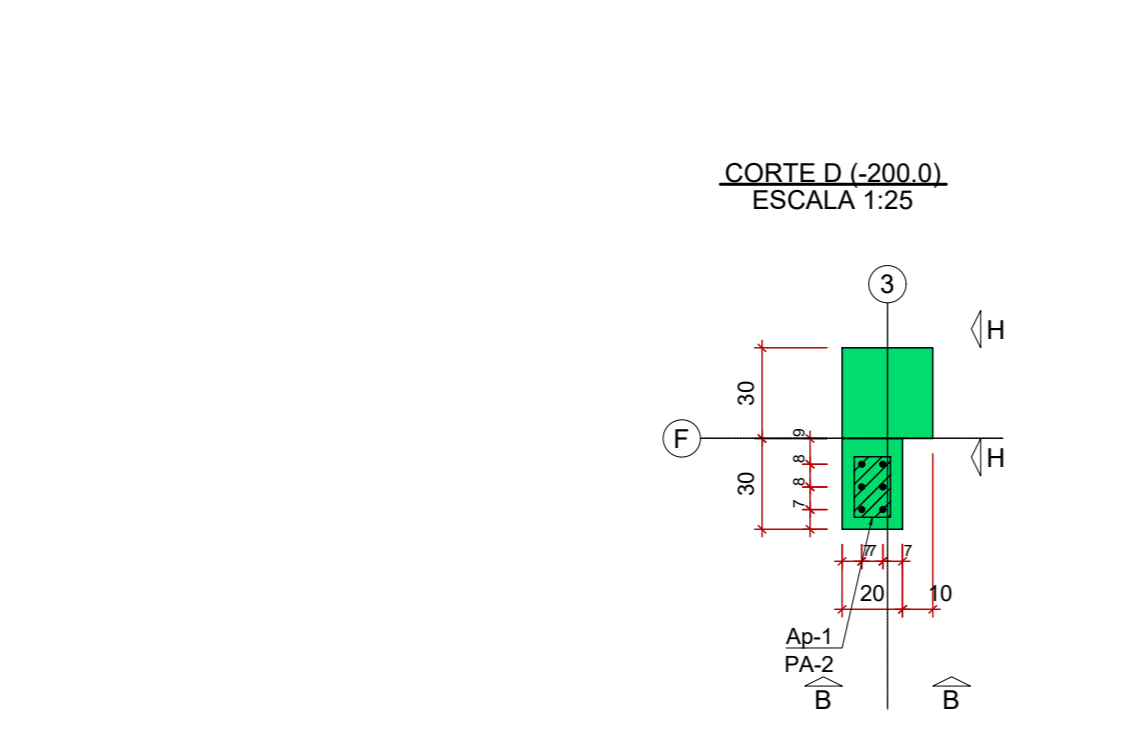
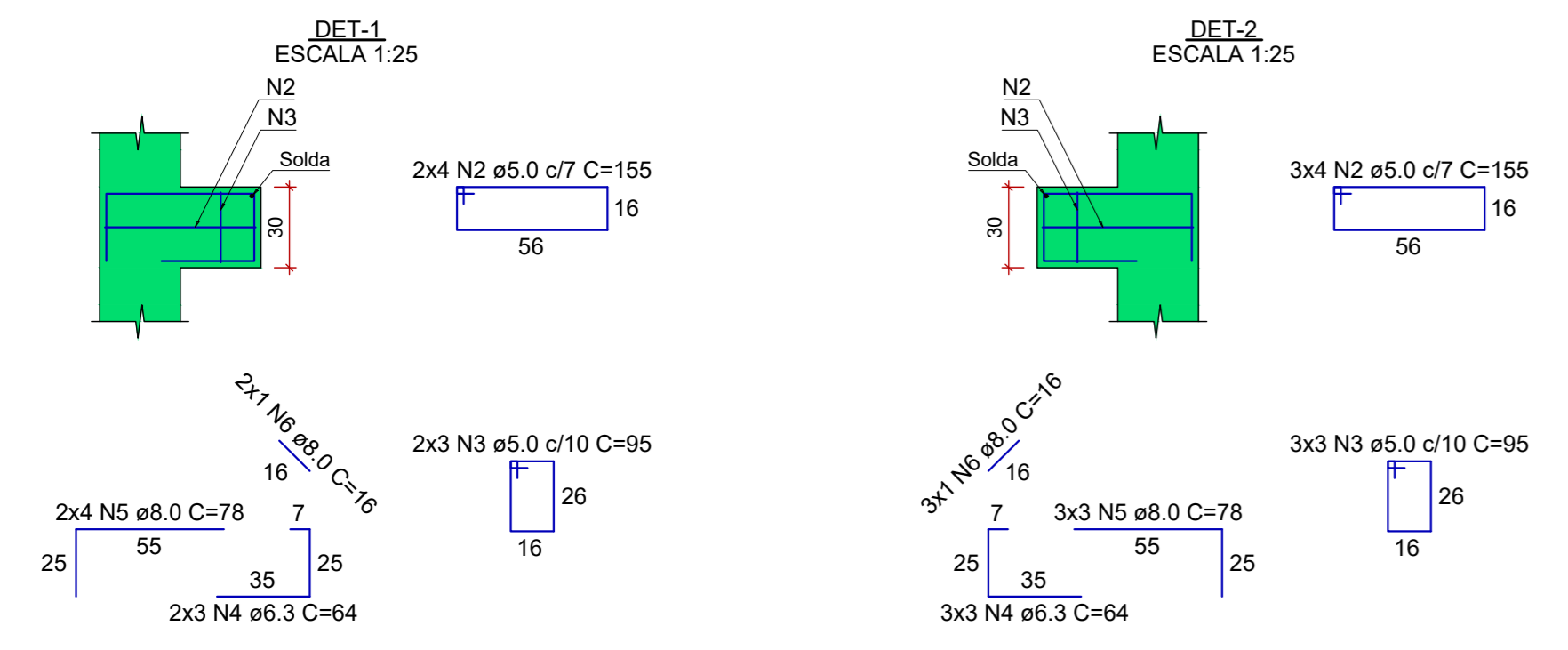
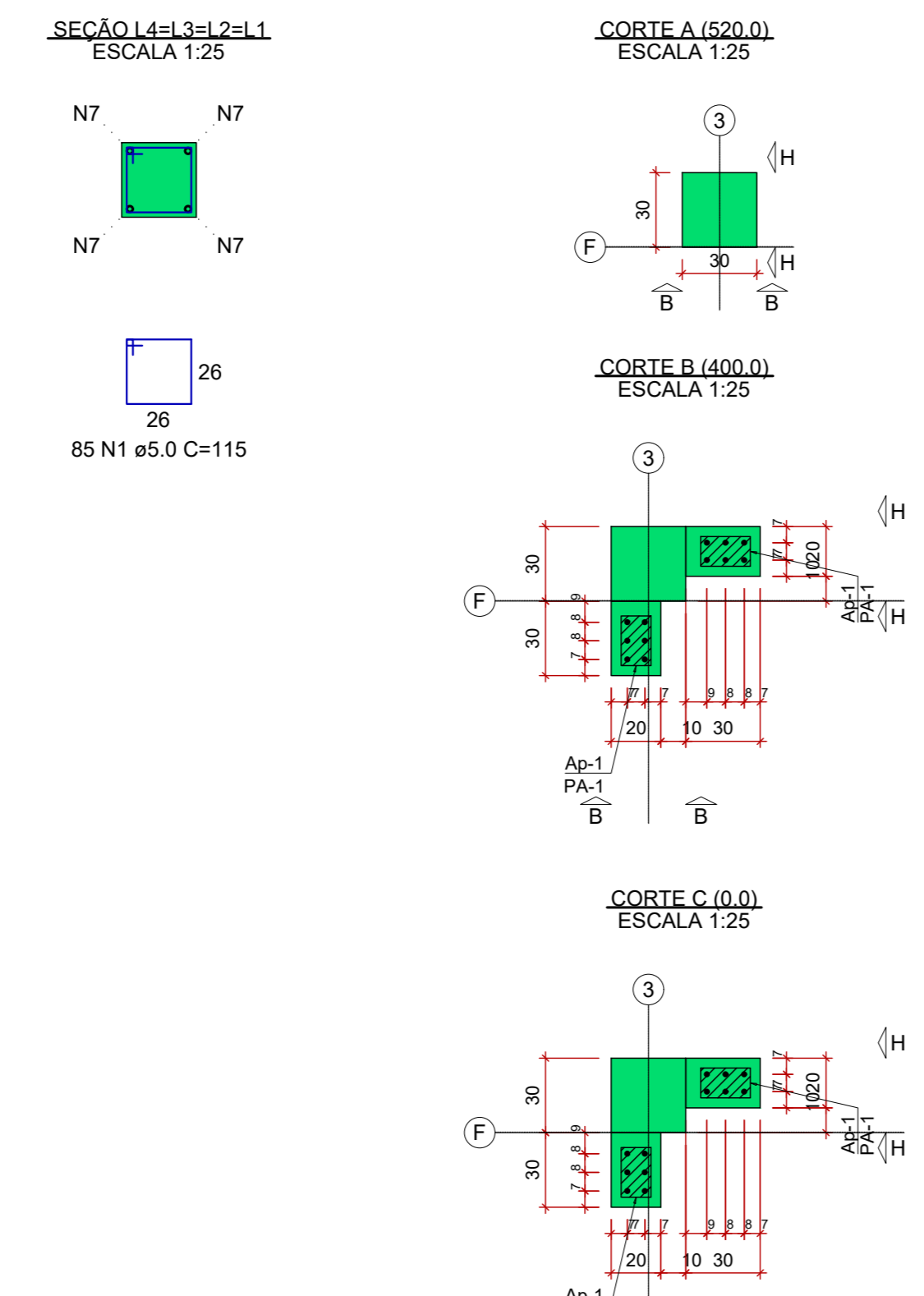
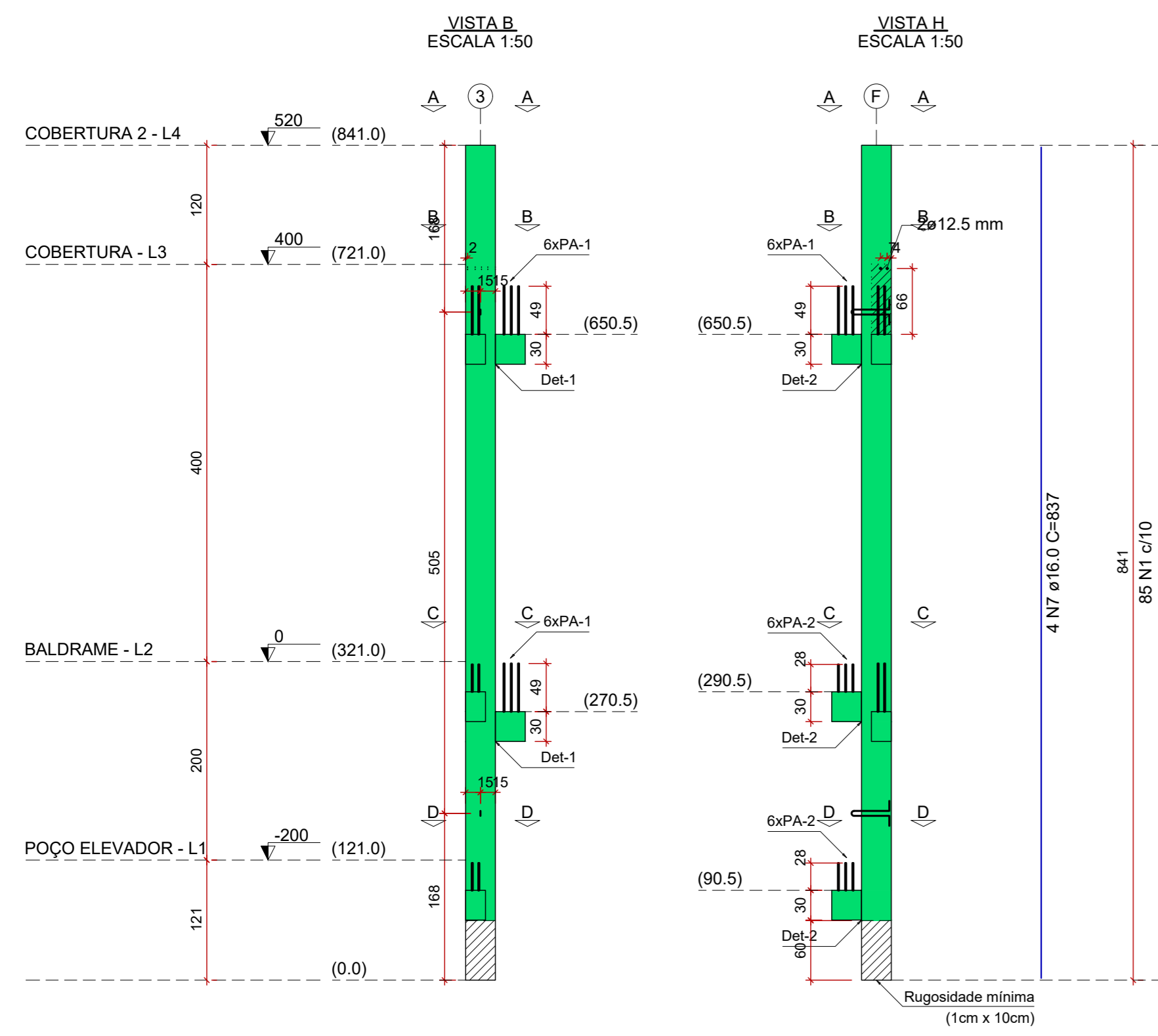
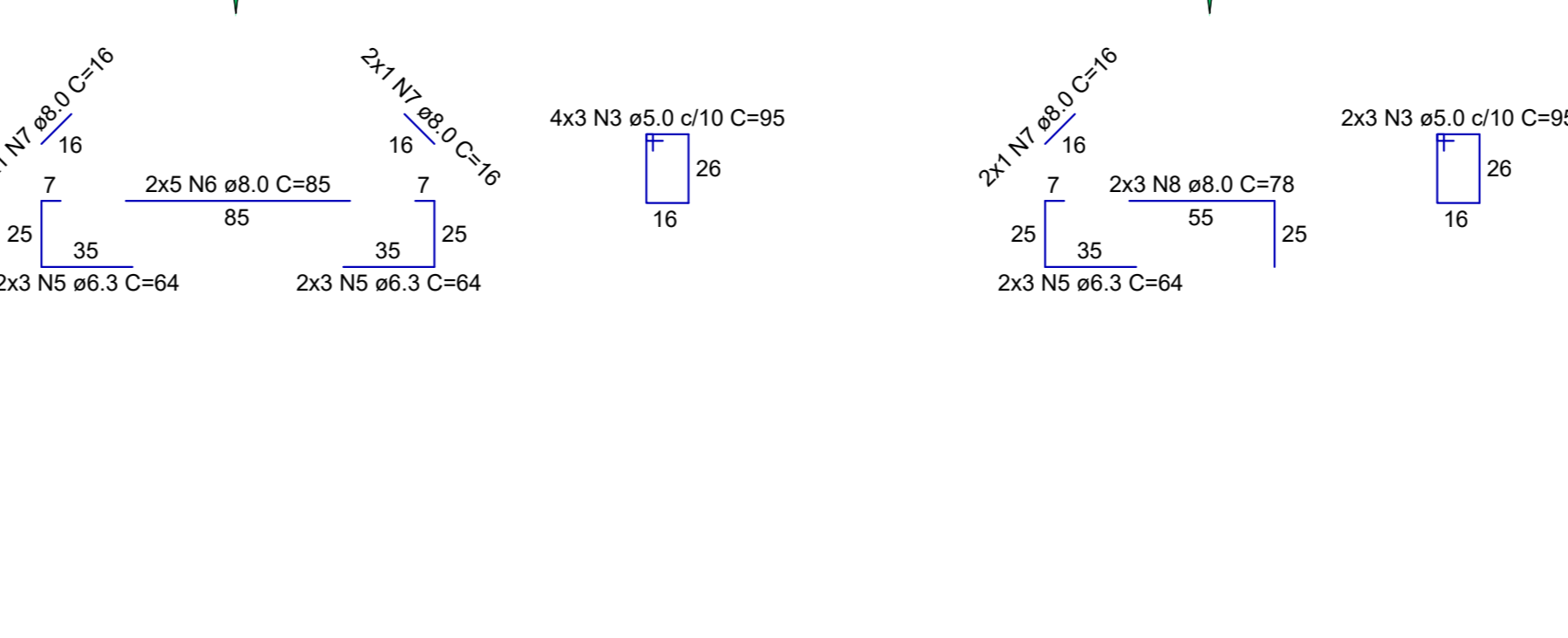
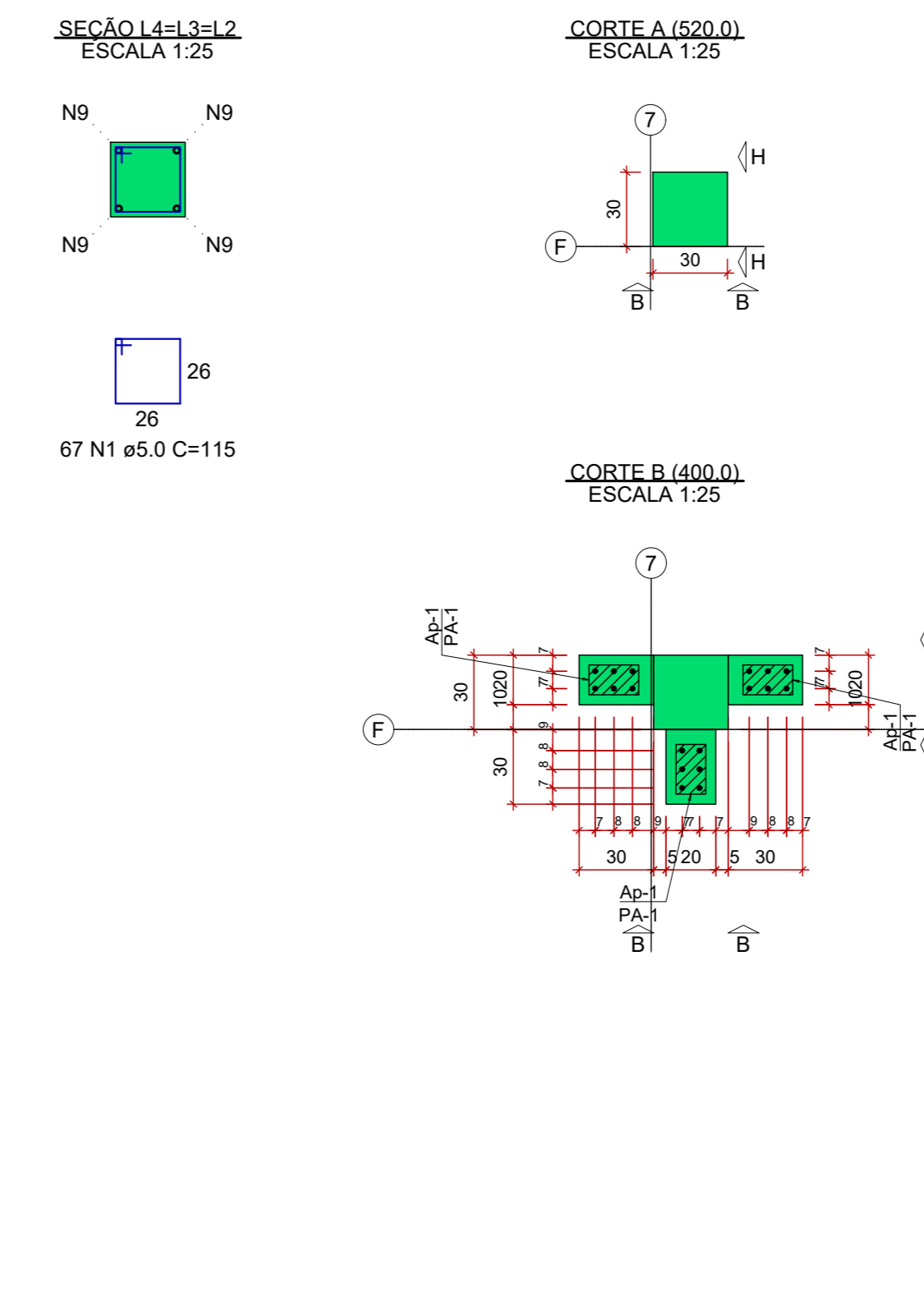
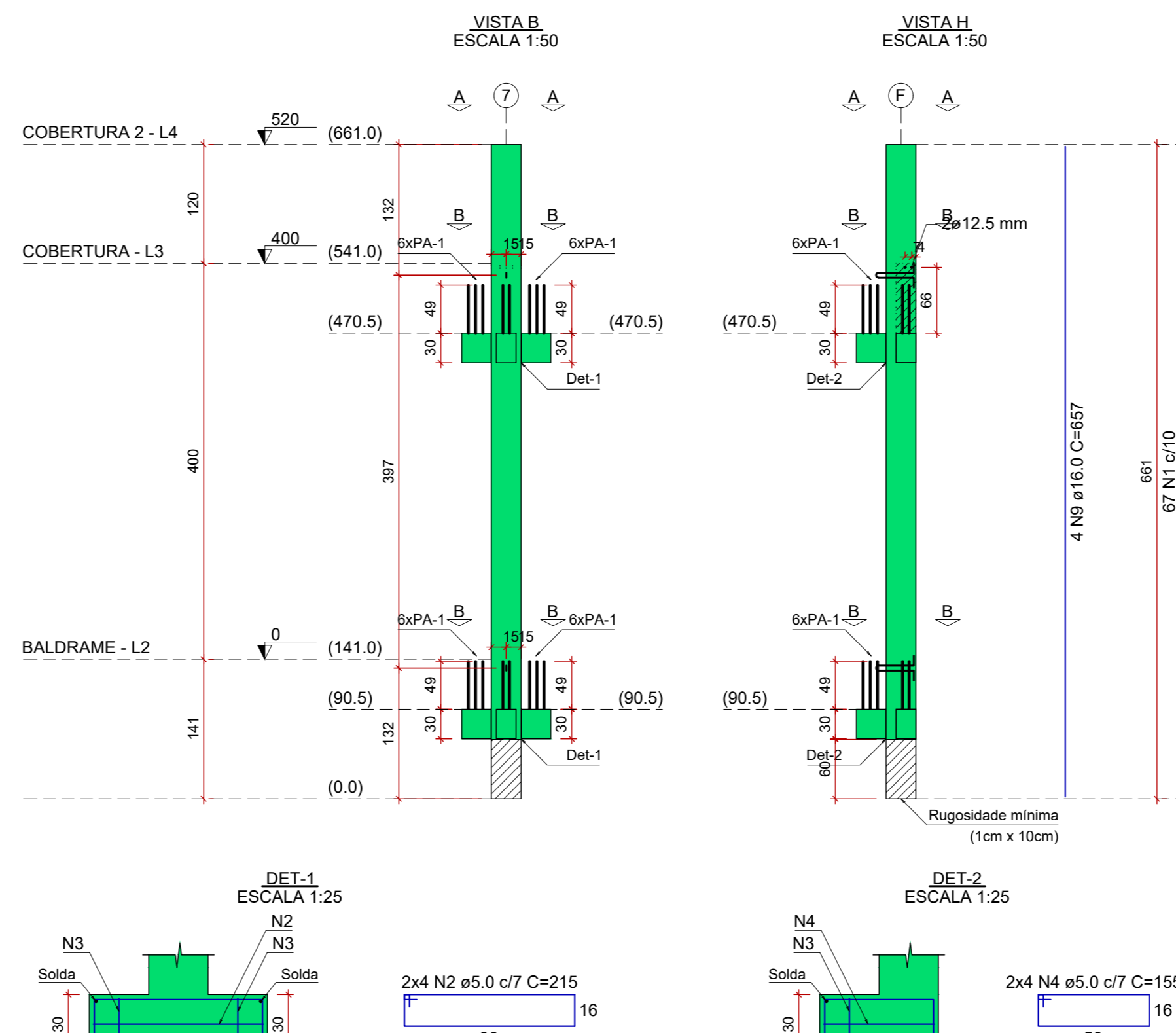


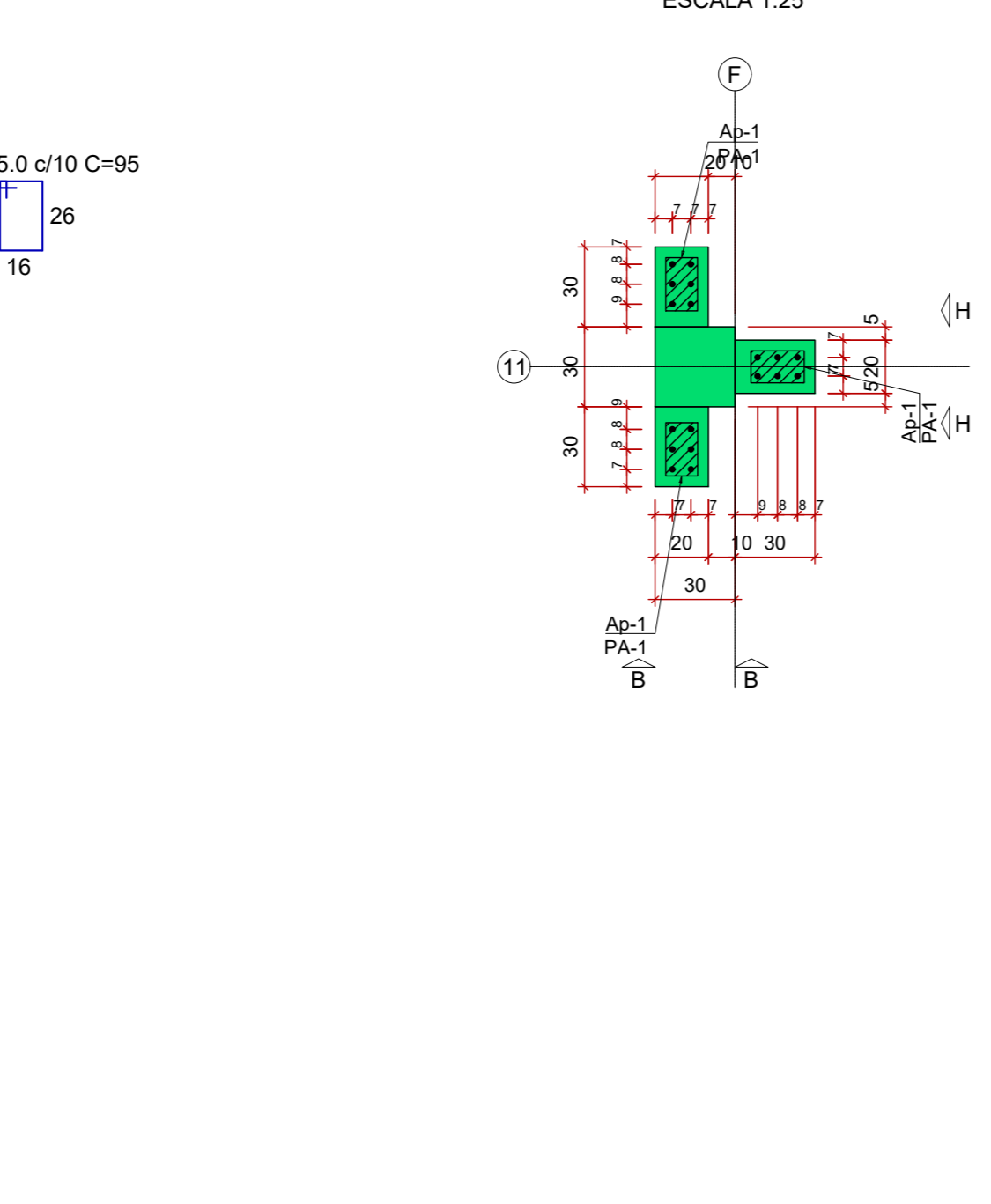
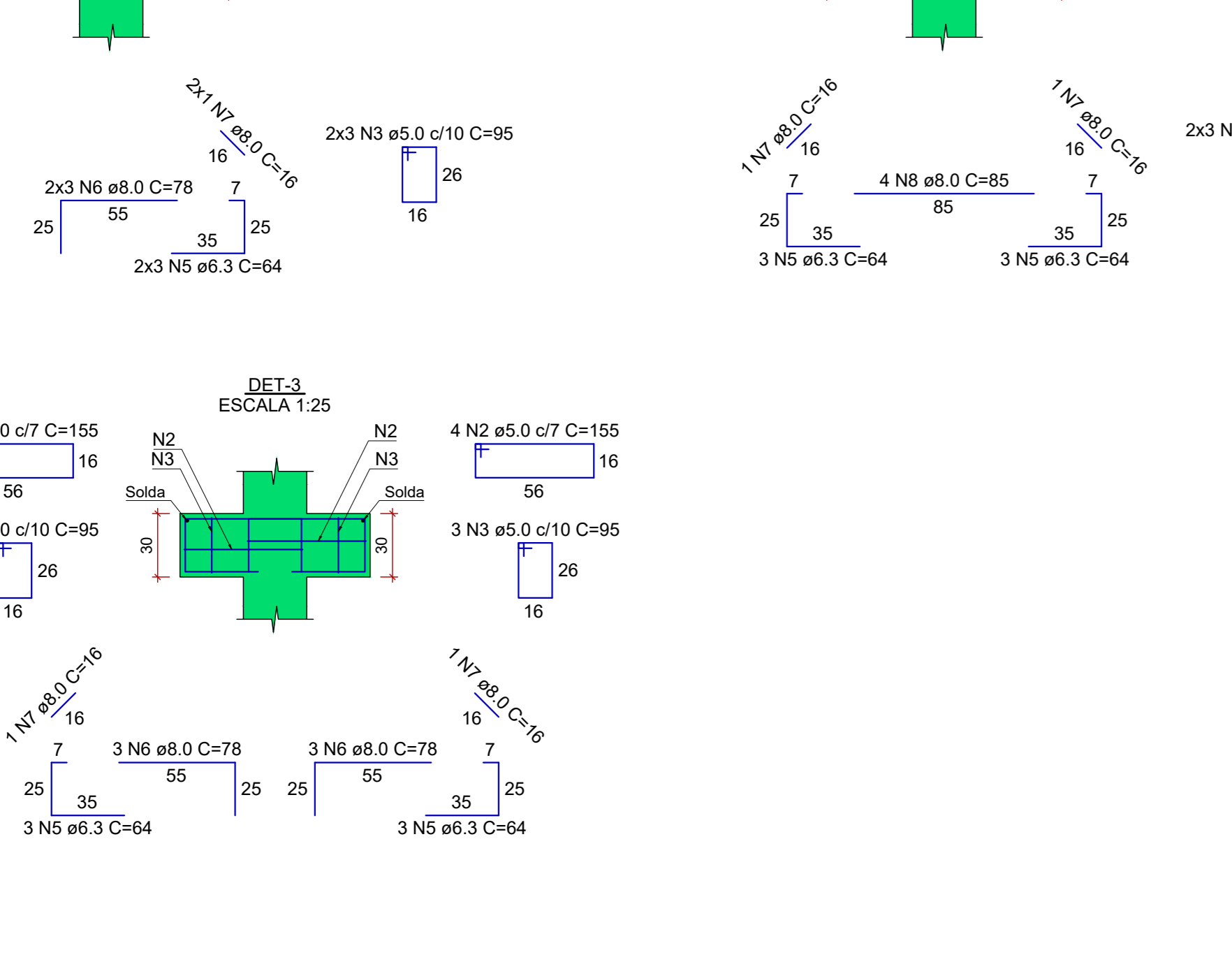
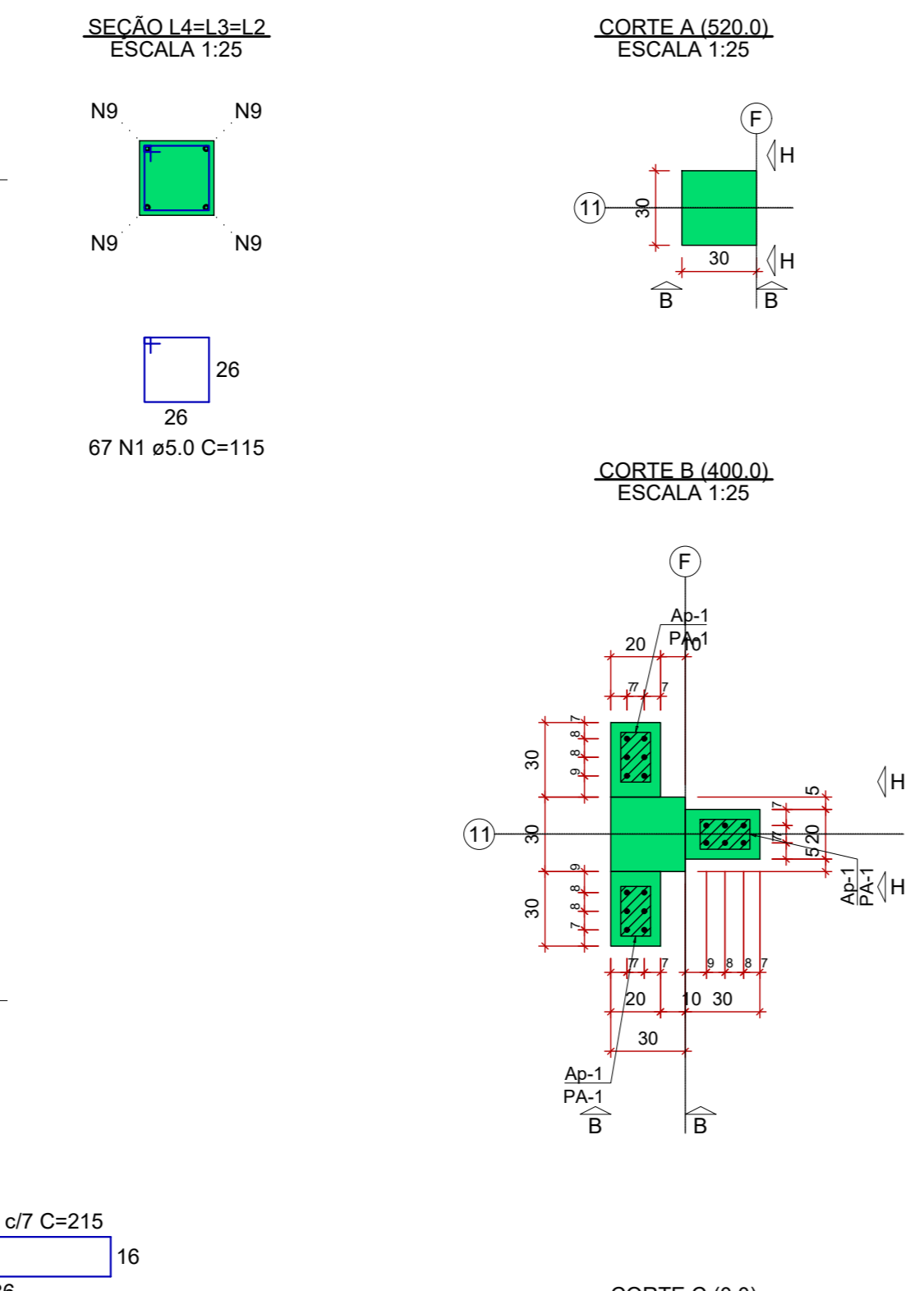
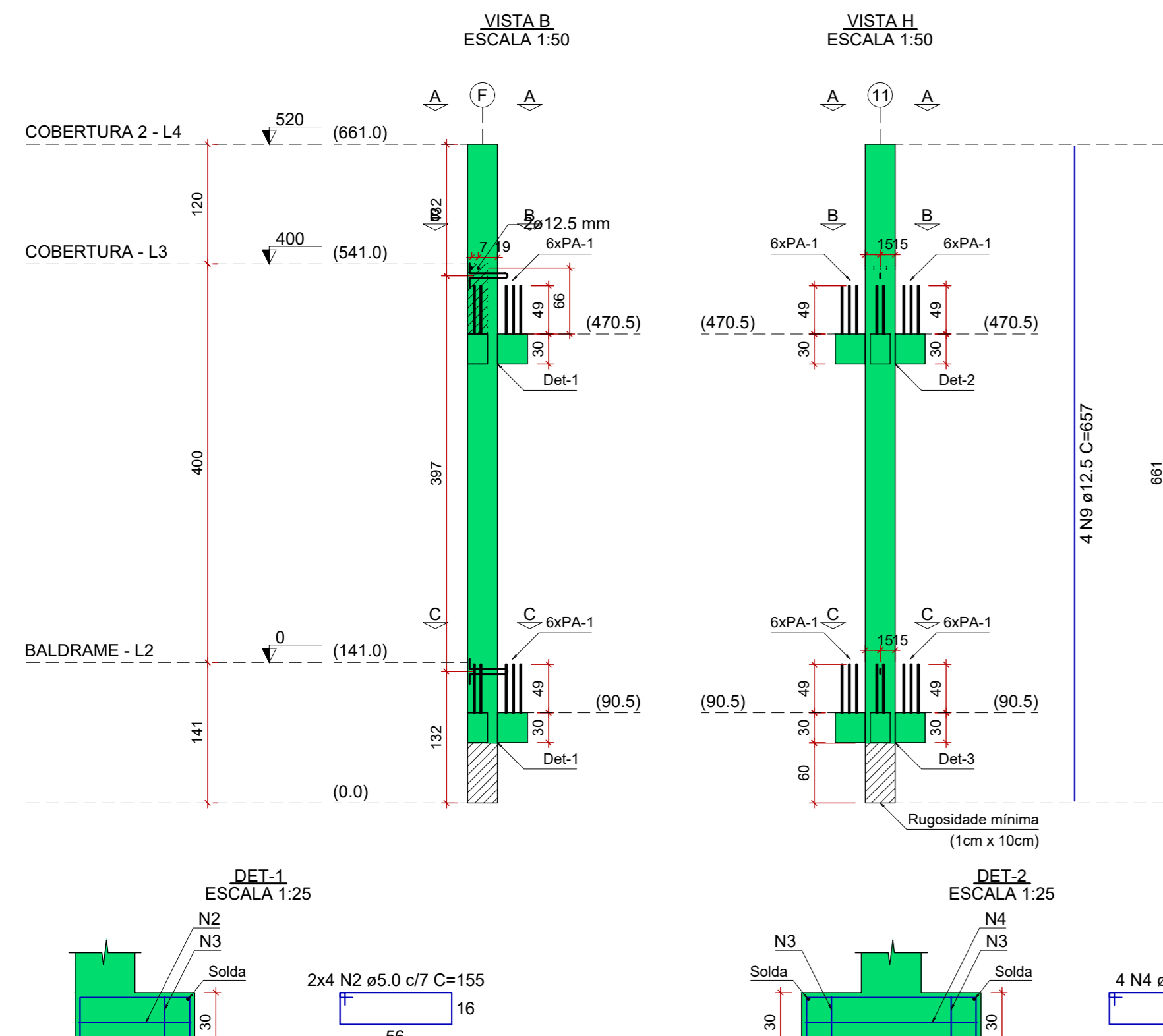
PM20=PM52



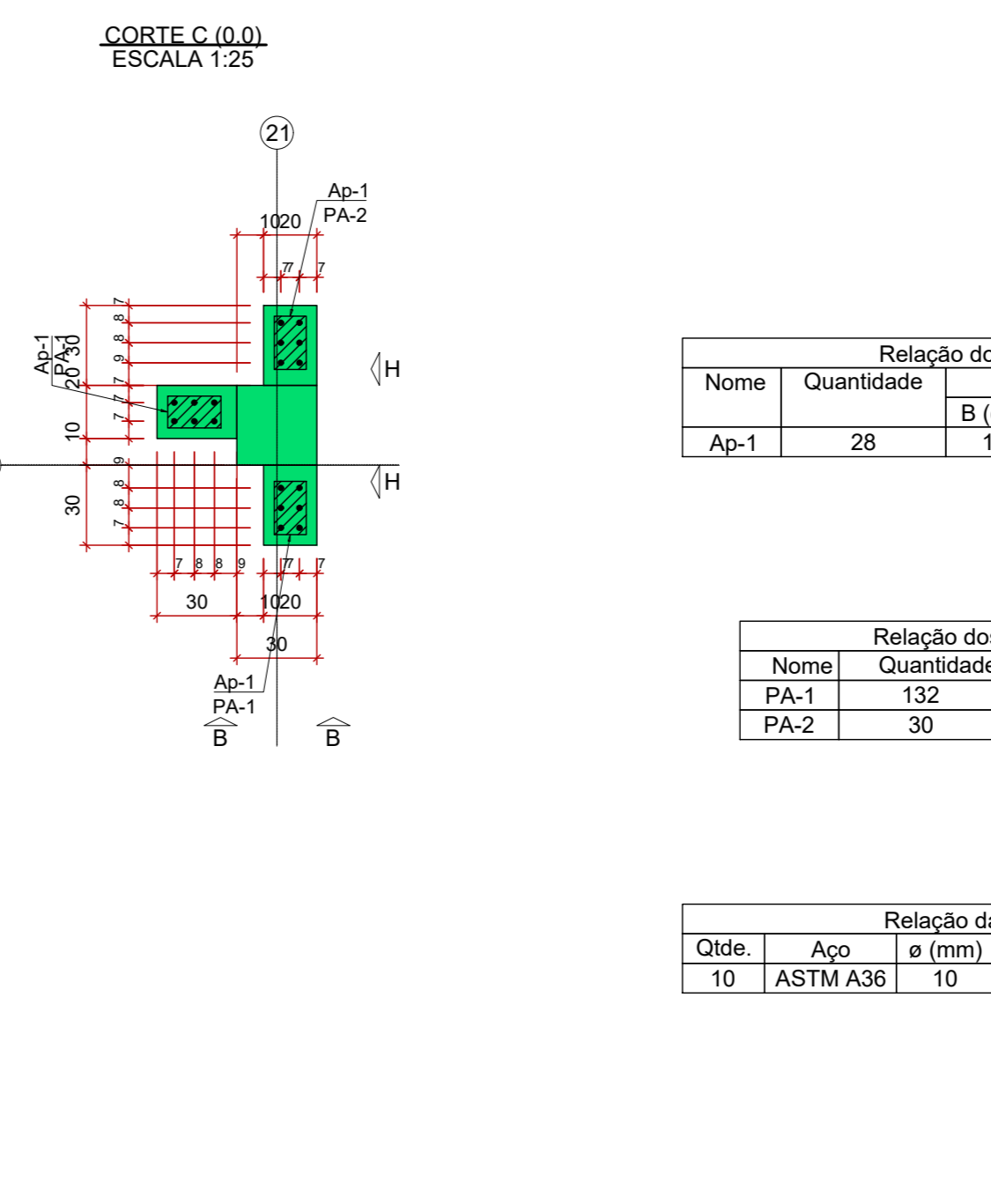
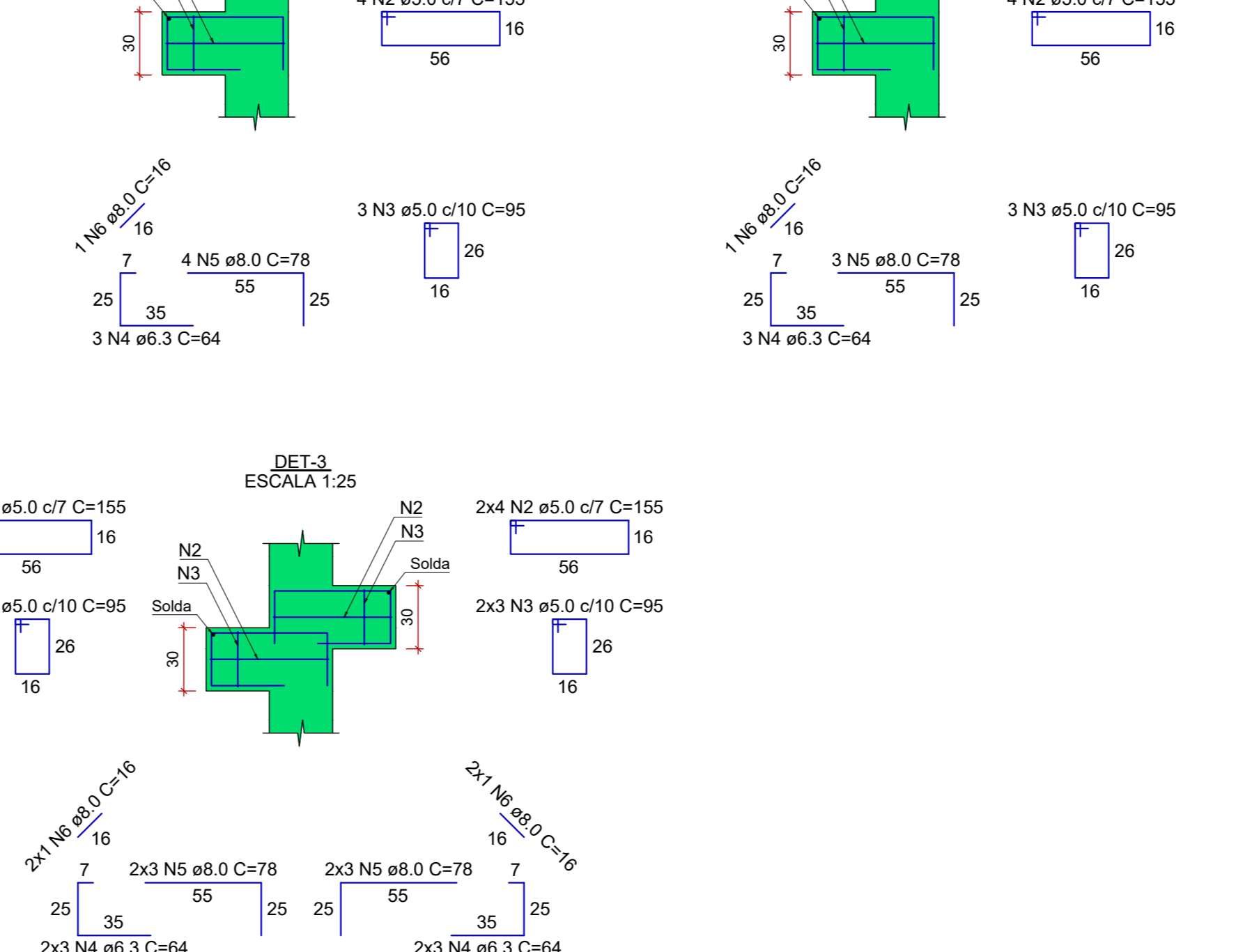
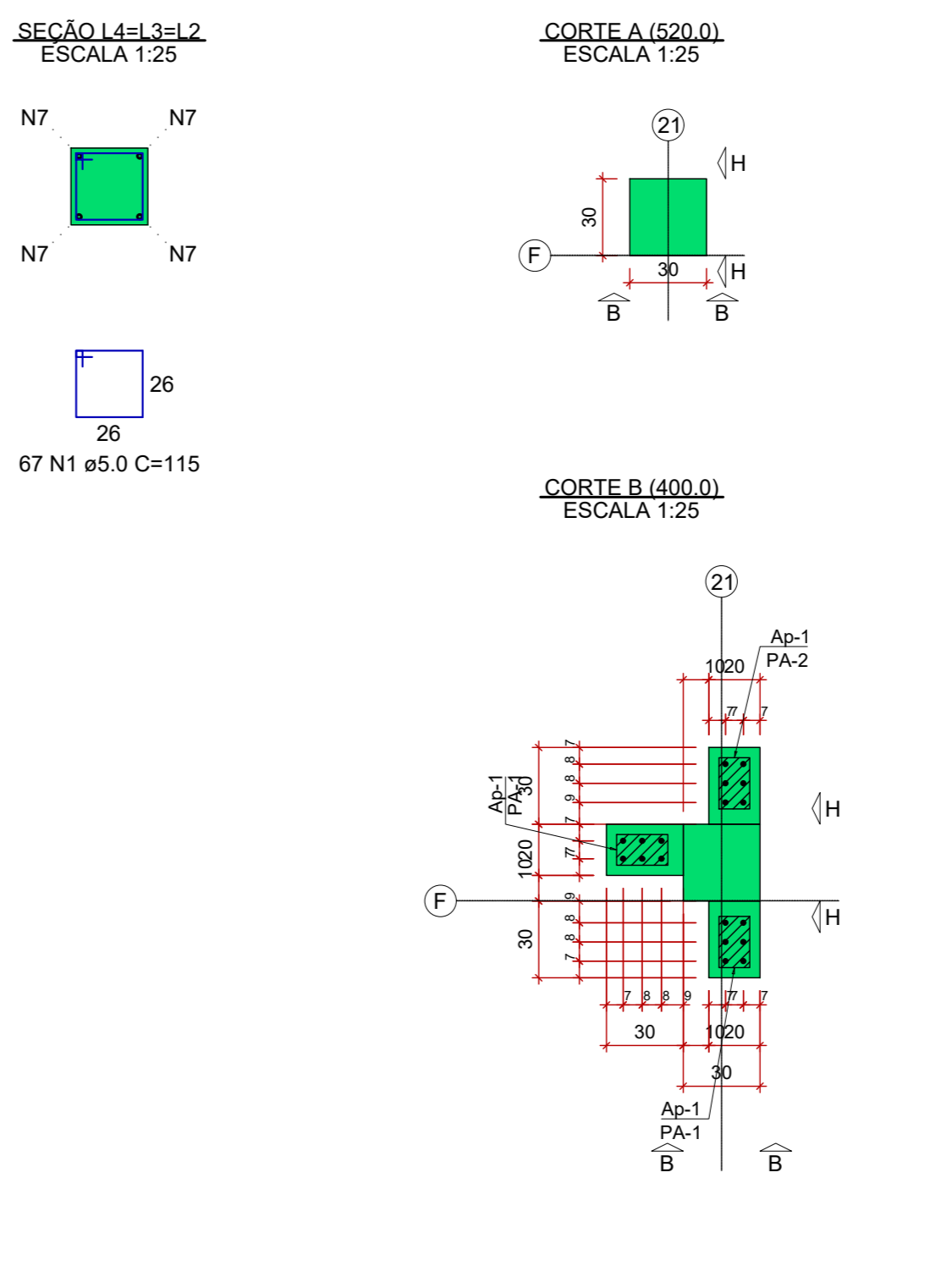
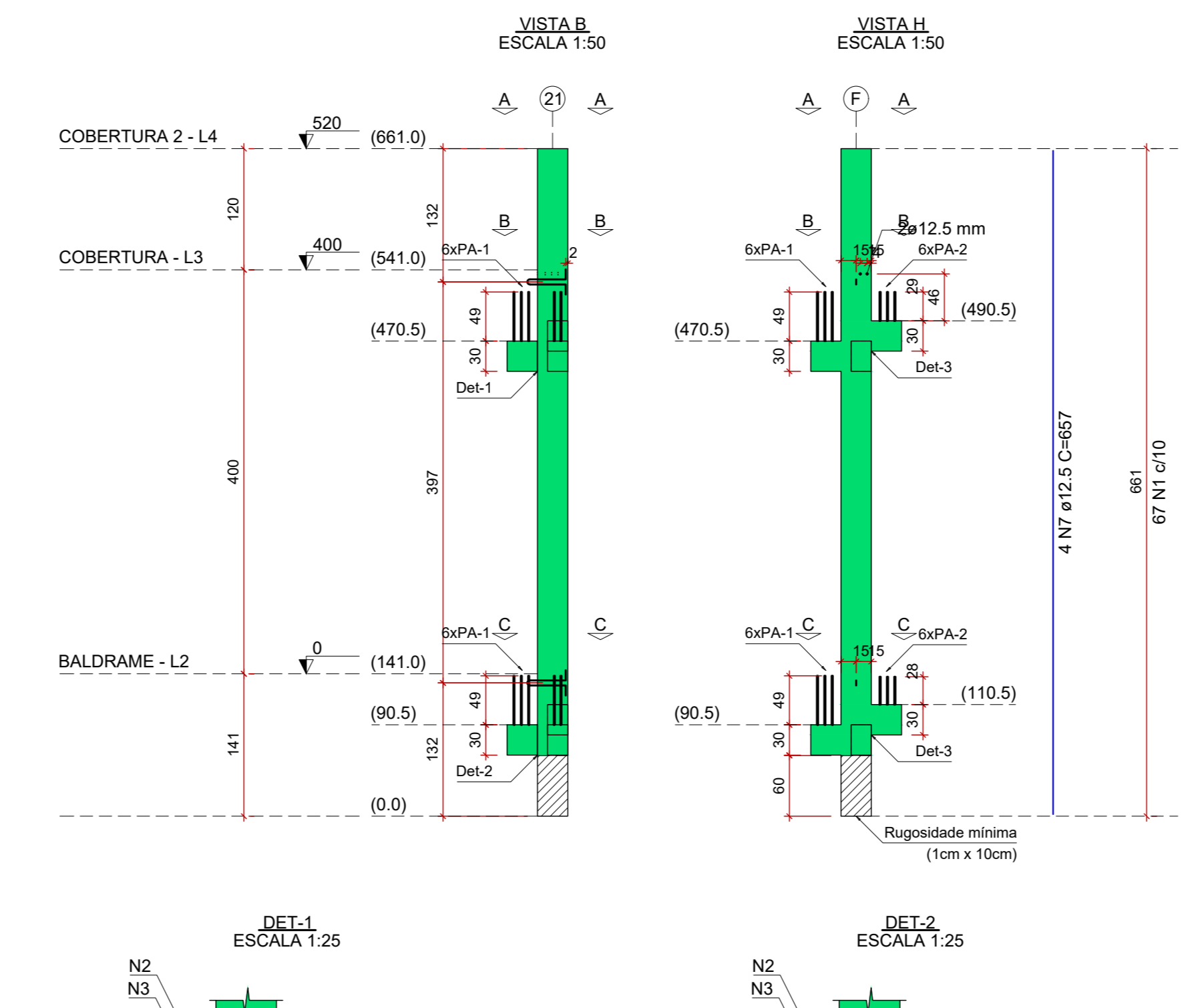
PM21



PM22



PM25



Relação dos aparafusos de apoio

Nome	Quantidade	Dimensões		Dureza	
		B (cm)	H (cm)	E (cm)	
Ap-1	28	12	20	0,5	70 Shore A

Relação dos pinos de ancoragem

Nome	Quantidade	Aço	a (mm)	Comp. (cm)
PA-1	132	CA50	10	77
PA-2	30	CA25	10	56

Relação das alças de içamento

Qtd.	Aço	a (mm)	C. Anc. (cm)	C. Util. (cm)
10	ASTM A36	10	28	99

RELAÇÃO DO AÇO

ELEMENTO	AÇO	N	DIAM (mm)	QUANT	C.UNIT (cm)	C.TOTAL (cm)
PM20x2	CA60	1	5.0	170	115	19550
	CA60	2	5.0	40	155	6200
	CA60	3	5.0	30	95	2850
	CA50	4	6.3	30	64	1920
	CA50	5	8.0	34	78	2652
CA50	6	8.0	10	16	160	
CA50	7	16.0	8	637	6696	

RESUMO DO AÇO

AÇO	DIAM (mm)	C.TOTAL (m)	PESO + 10% (kg)
CA50	6.3	19.2	5.2
	8.0	28.1	12.1
	16.0	67	116.3
CA60	5.0	288	48.3

PESO TOTAL (kg)

CA50	133.6
CA60	48.3

Volume de concreto (C-30) = 1.70 m³

RELAÇÃO DO AÇO

ELEMENTO	AÇO	N	DIAM (mm)	QUANT	C.UNIT (cm)	C.TOTAL (cm)
PM21	CA60	1	5.0	67	115	7705
	CA60	2	5.0	8	215	1720
	CA60	3	5.0	18	95	1710
	CA60	4	5.0	4	215	860
	CA50	5	6.3	18	64	1152
	CA50	6	8.0	12	78	936
	CA50	7	8.0	6	16	96
	CA50	8	8.0	4	85	340
	CA50	9	16.0	4	657	2628

RESUMO DO AÇO

AÇO	DIAM (mm)	C.TOTAL (m)	PESO + 10% (kg)
CA50	6.3	11.5	3.1
	8.0	14.1	6.1
	16.0	26.3	45.6
CA60	5.0	123.8	21

PESO TOTAL (kg)

CA50	54.9
CA60	21

Volume de concreto (C-30) = 0.71 m³

RELAÇÃO DO AÇO

ELEMENTO	AÇO	N	DIAM (mm)	QUANT	C.UNIT (cm)	C.TOTAL (cm)
PM22	CA60	1	5.0	67	115	7705
	CA60	2	5.0	16	155	2480
	CA60	3	5.0	18	95	1710
	CA60	4	5.0	4	215	860
	CA50	5	6.3	18	64	1152
	CA50	6	8.0	12	78	936
	CA50	7	8.0	6	16	96
	CA50	8	8.0	4	85	340
	CA50	9	12.5	4	657	2628

RESUMO DO AÇO

AÇO	DIAM (mm)	C.TOTAL (m)	PESO + 10% (kg)
CA50	6.3	11.5	3.1
	8.0	13.7	6
	12.5	26.3	27.8
CA60	5.0	127.5	21.6

PESO TOTAL (kg)

CA50	38.8
CA60	21.6

Volume de concreto (C-30) = 0.71 m³

RELAÇÃO DO AÇO

ELEMENTO	AÇO	N	DIAM (mm)	QUANT	C.UNIT (cm)	C.TOTAL (cm)
PM25	CA60	1	5.0	67	115	7705
	CA60	2	5.0	24	155	3720
	CA60	3	5.0	18	95	1710
	CA50	4	6.3	18	64	1152
	CA50	5	8.0	19	78	1482
	CA50	6	8.0	6	16	96
	CA50	7	12.5	4	657	2628

RESUMO DO AÇO

AÇO	DIAM (mm)	C.TOTAL (m)	PESO + 10% (kg)
CA50	6.3	11.5	3.1
	8.0	15.8	6.8
	12.5	26.3	27.8
CA60	5.0	131.3	22.3

PESO TOTAL (kg)

CA50	37.8
CA60	22.3

Volume de concreto (C-30) = 0.71 m³

<p>PROJETO</p>	
<p>COORDENAÇÃO</p>	
<p>RESPONSÁVEL TÉCNICO E AUTOR</p>	
<p>PROJETO</p>	
<p>CONSTRUÇÃO DA UNIDADE DE PRONTO ATENDIMENTO</p>	
<p>ENDEREÇO</p>	
<p>DISCIPLINA</p>	
<p>FASE DO PROJETO</p>	
<p>PROJETO ESTRUTURAL</p>	
<p>EXECUTIVO</p>	
<p>PLANO Nº</p>	
<p>60/72</p>	
<p>DATA INICIAL</p>	
<p>ESCALA</p>	
<p>REVISÃO</p>	
<p>ARQUIVO</p>	
<p>3/10/2023</p>	
<p>INDICADA</p>	
<p>R01</p>	
<p>DAC-PP/PA-LP/PA-EST-ROZ.DWG</p>	