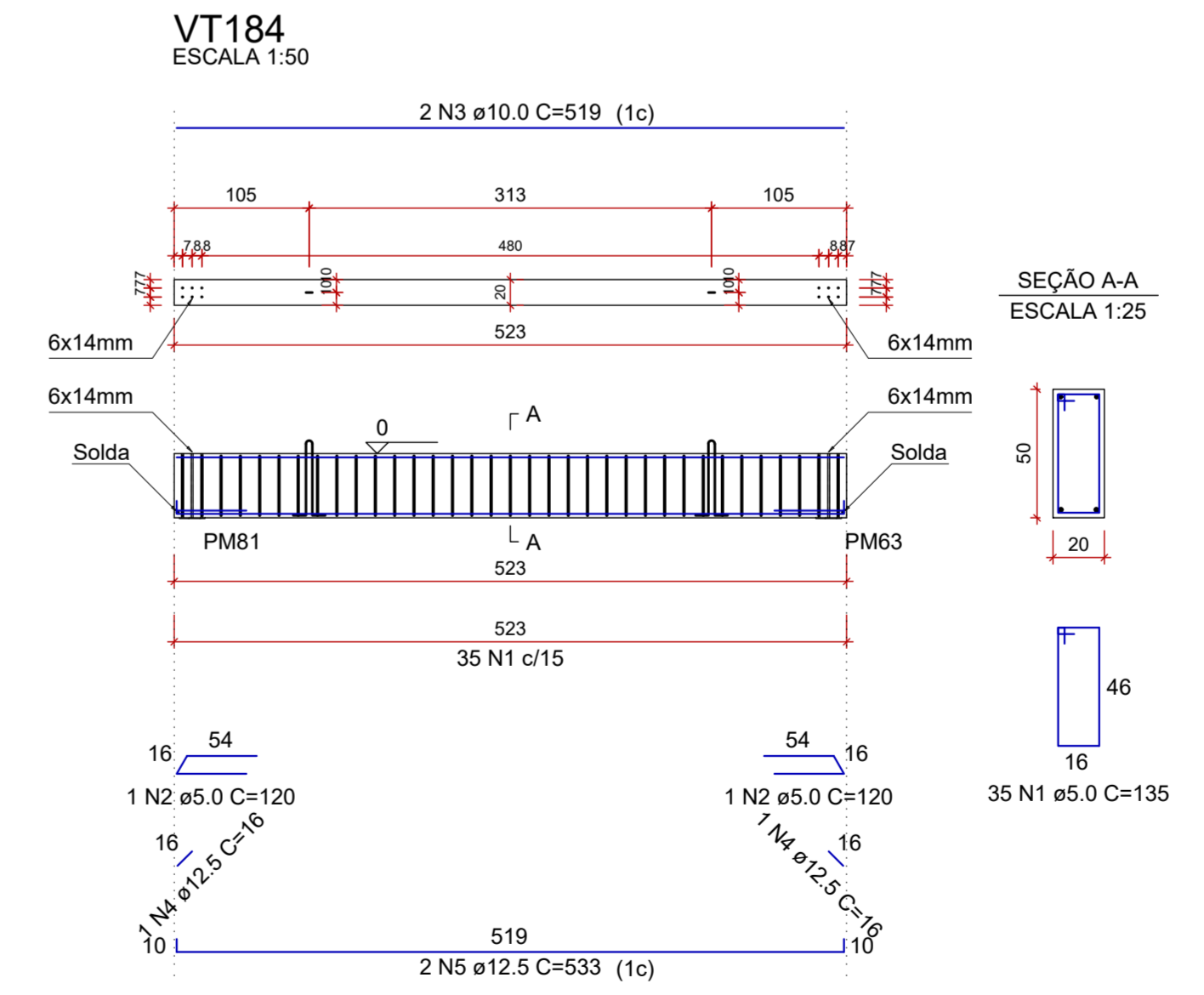
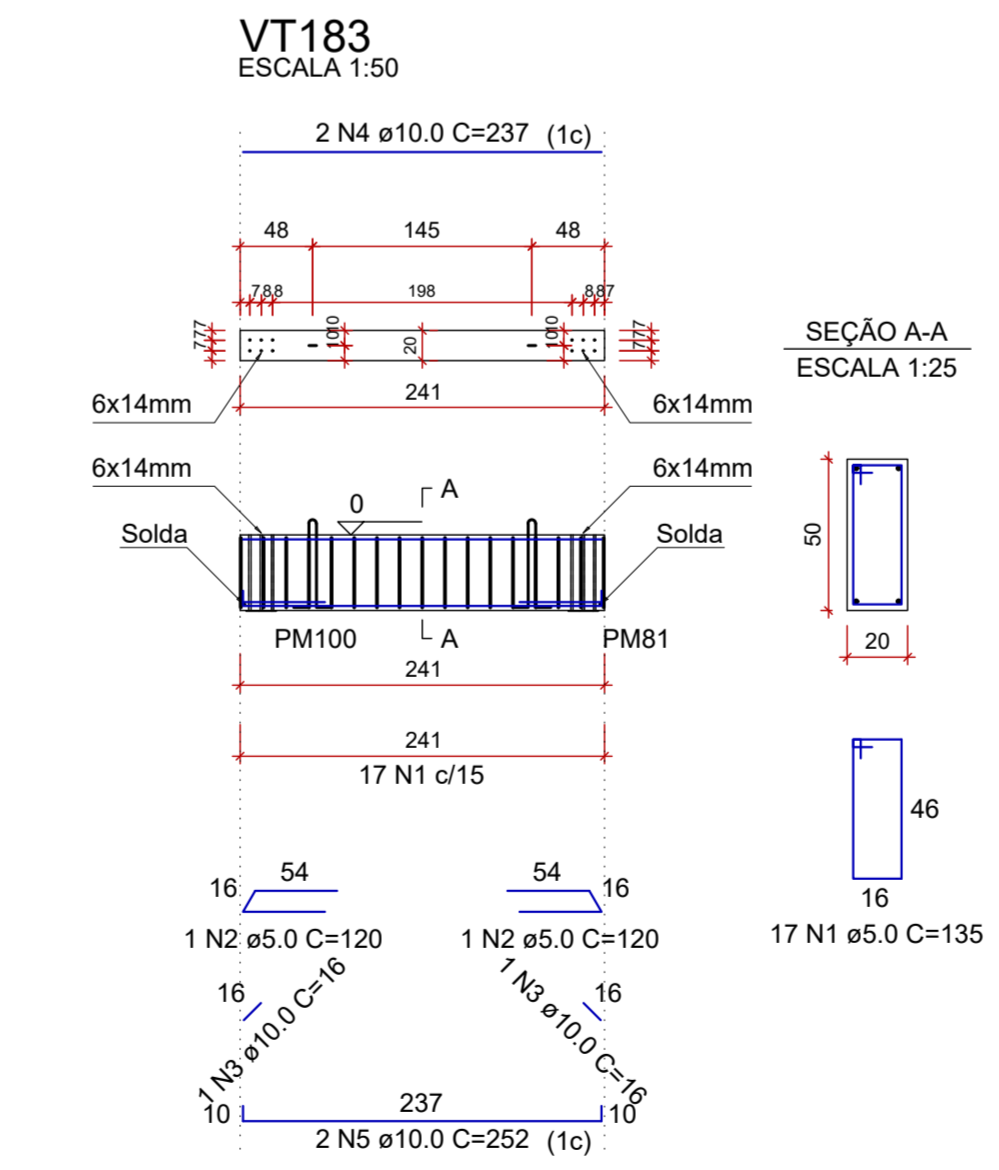
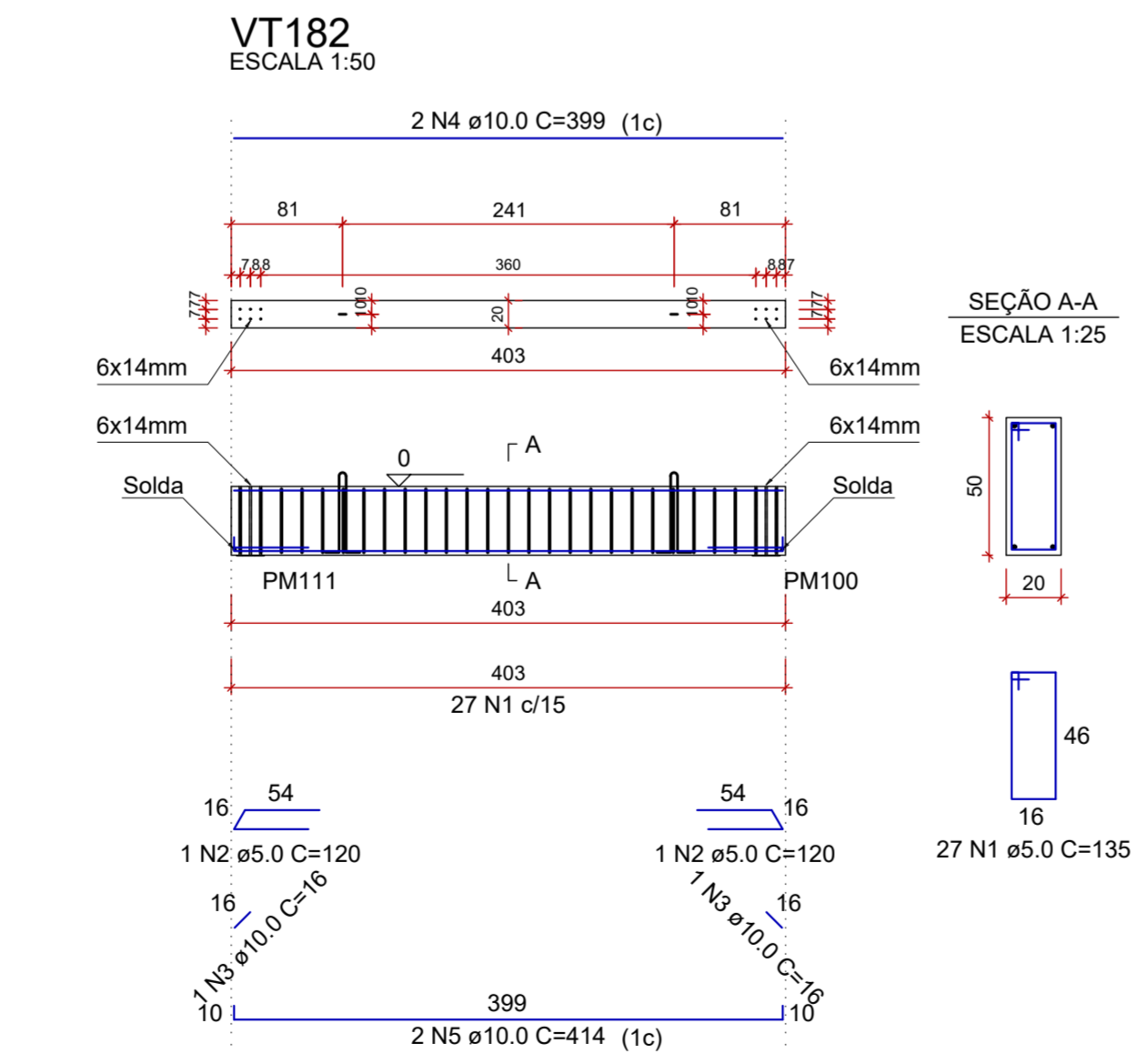
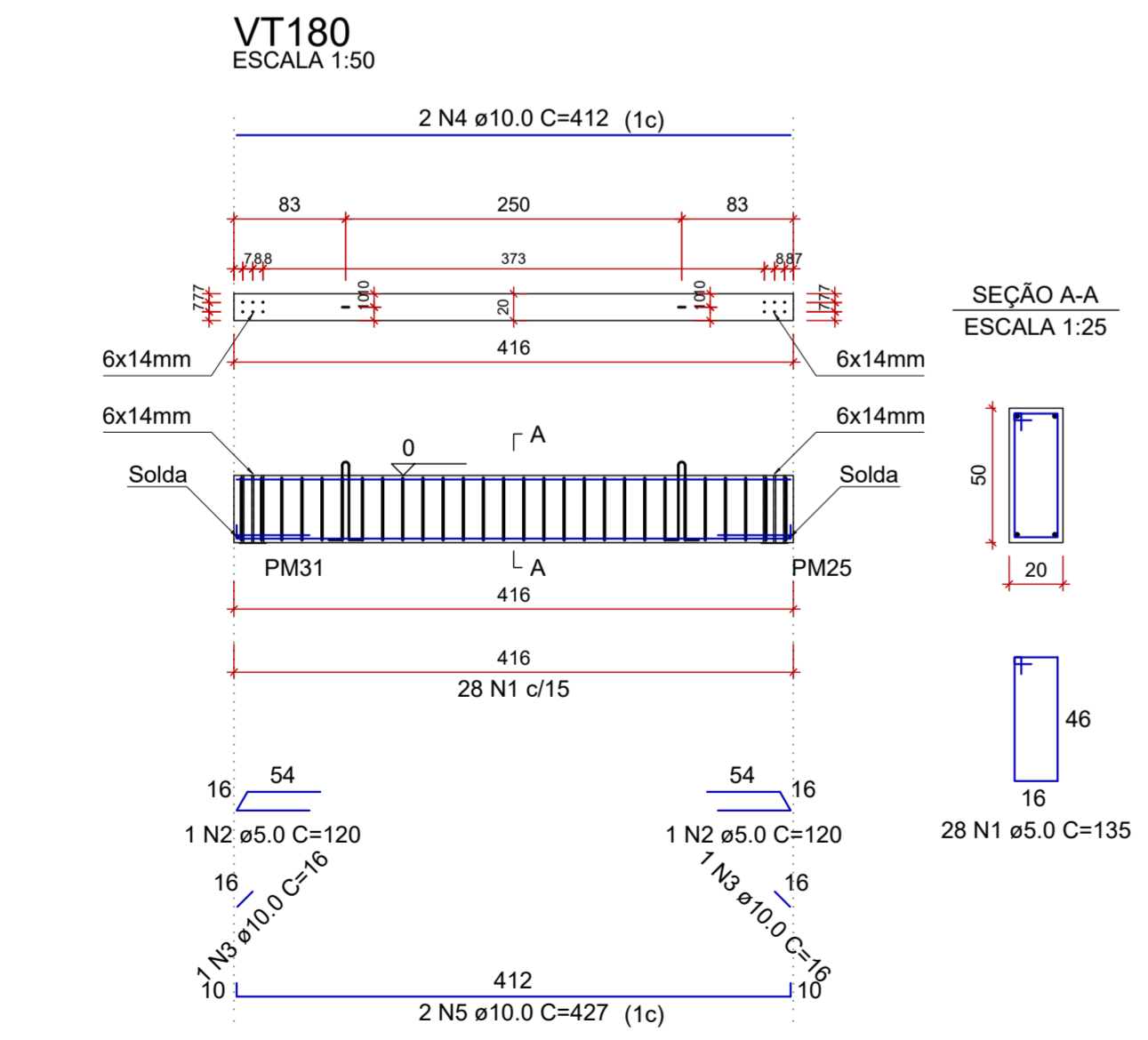
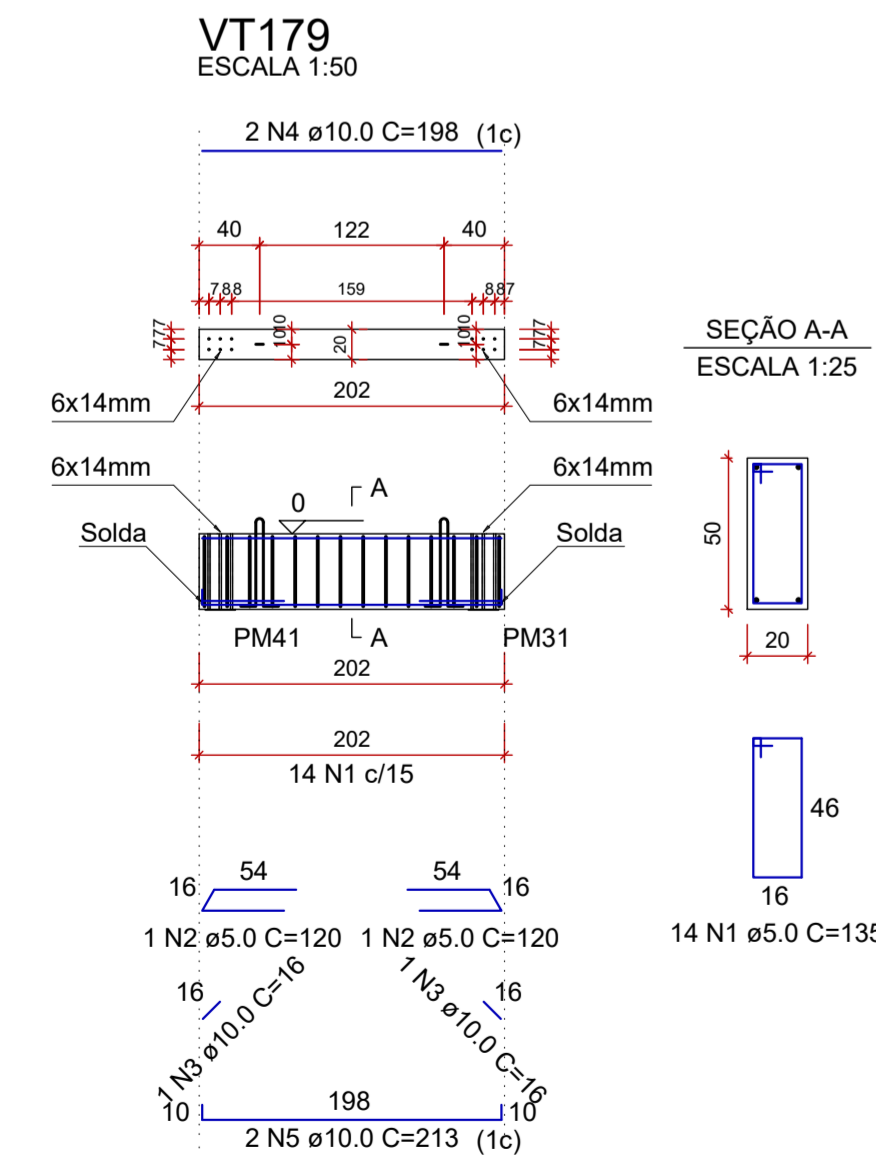
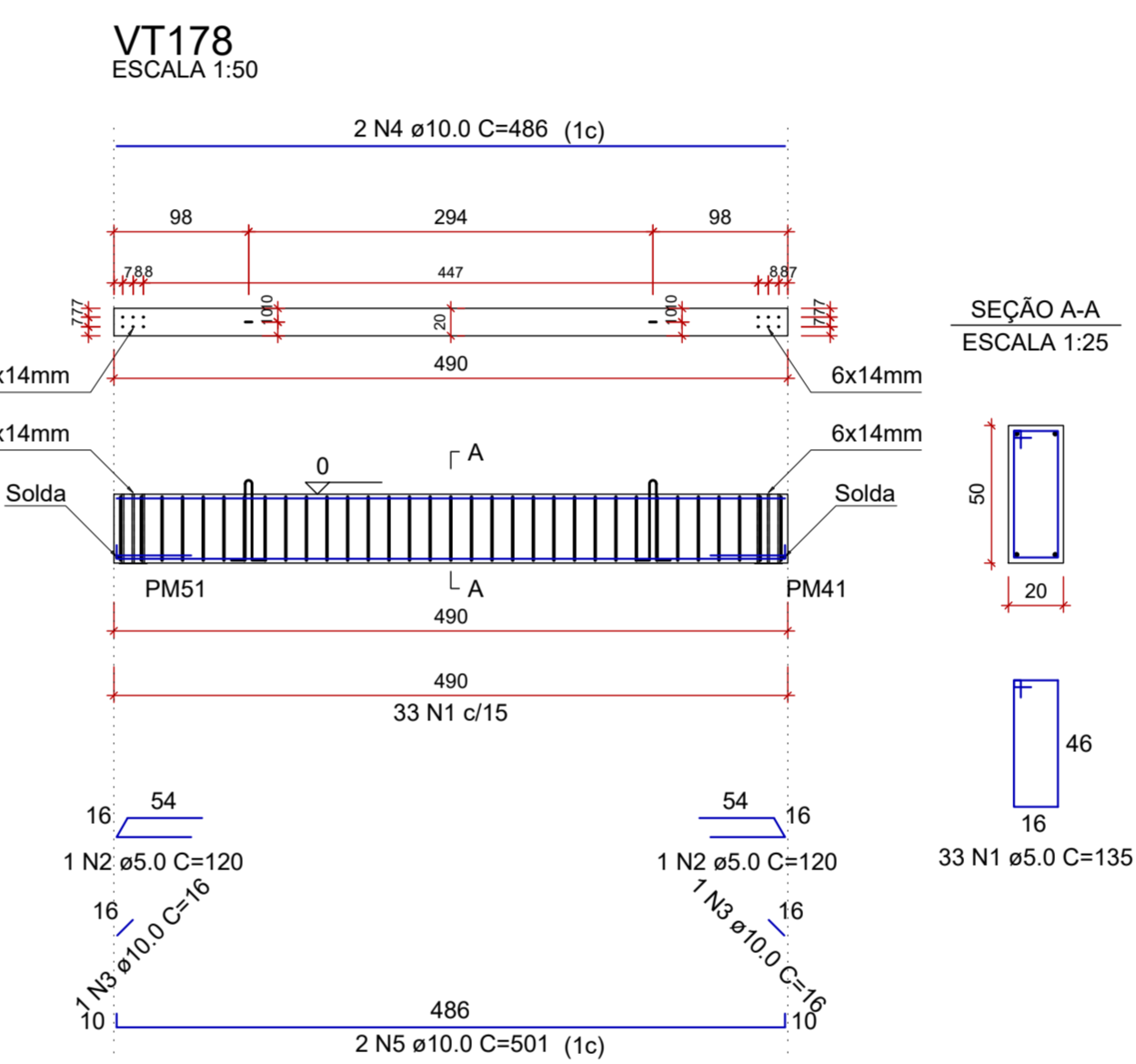
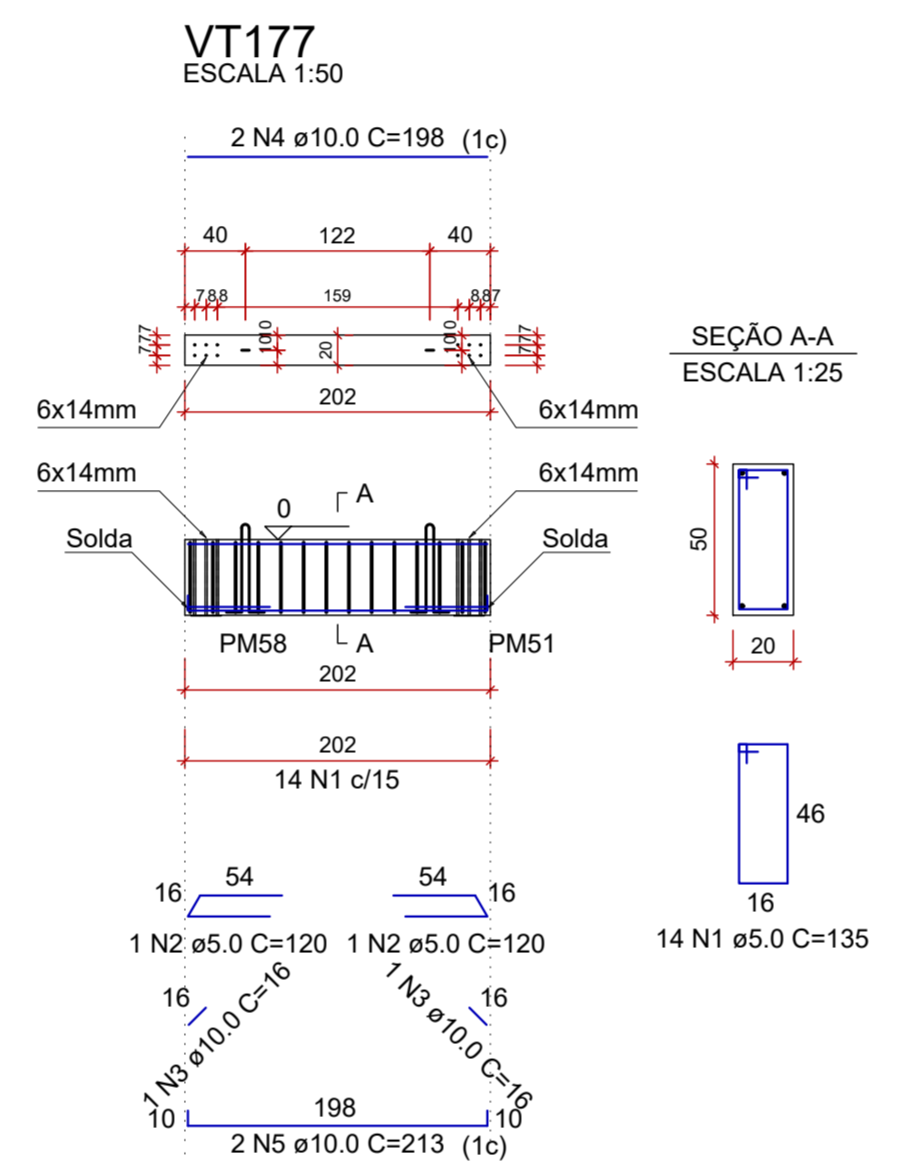
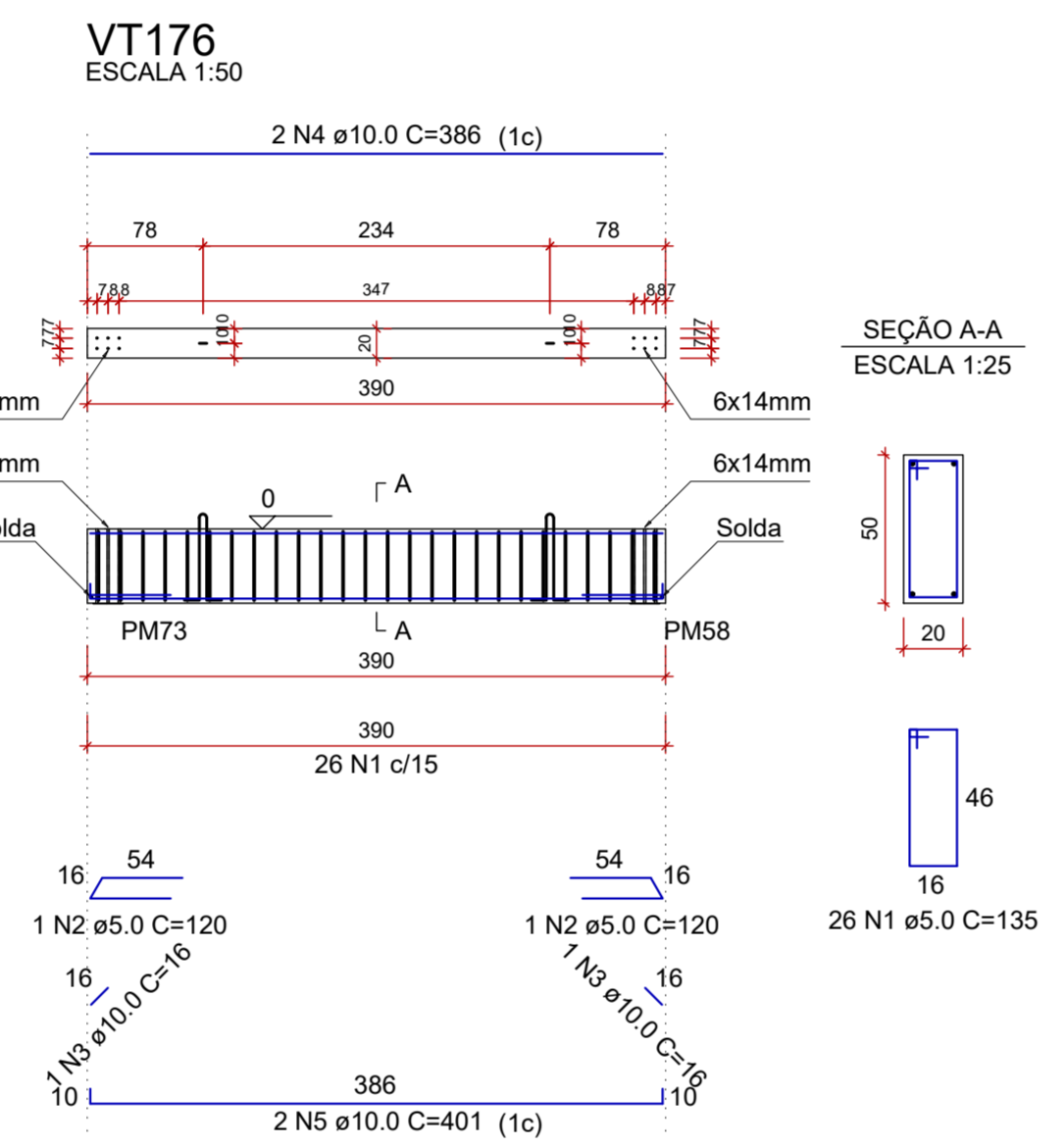
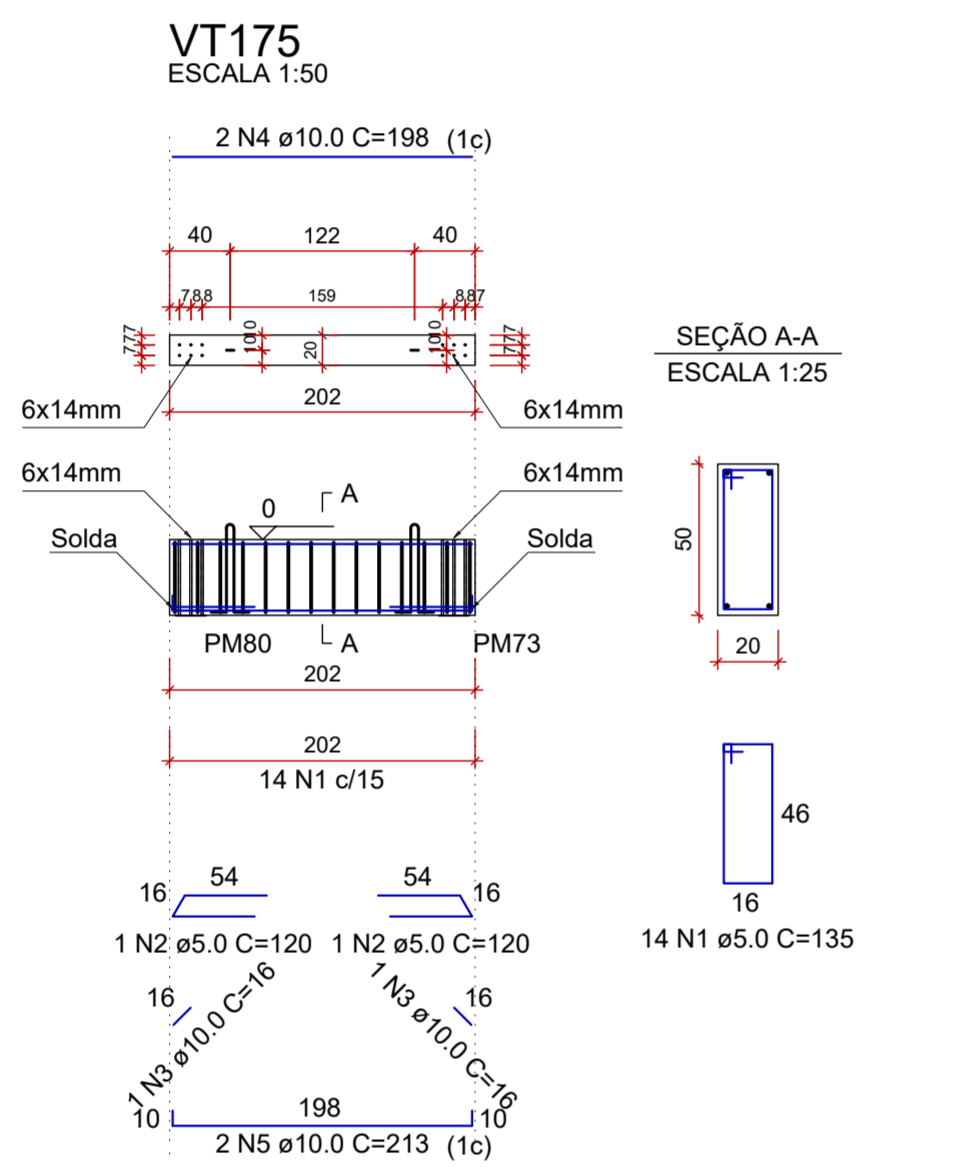
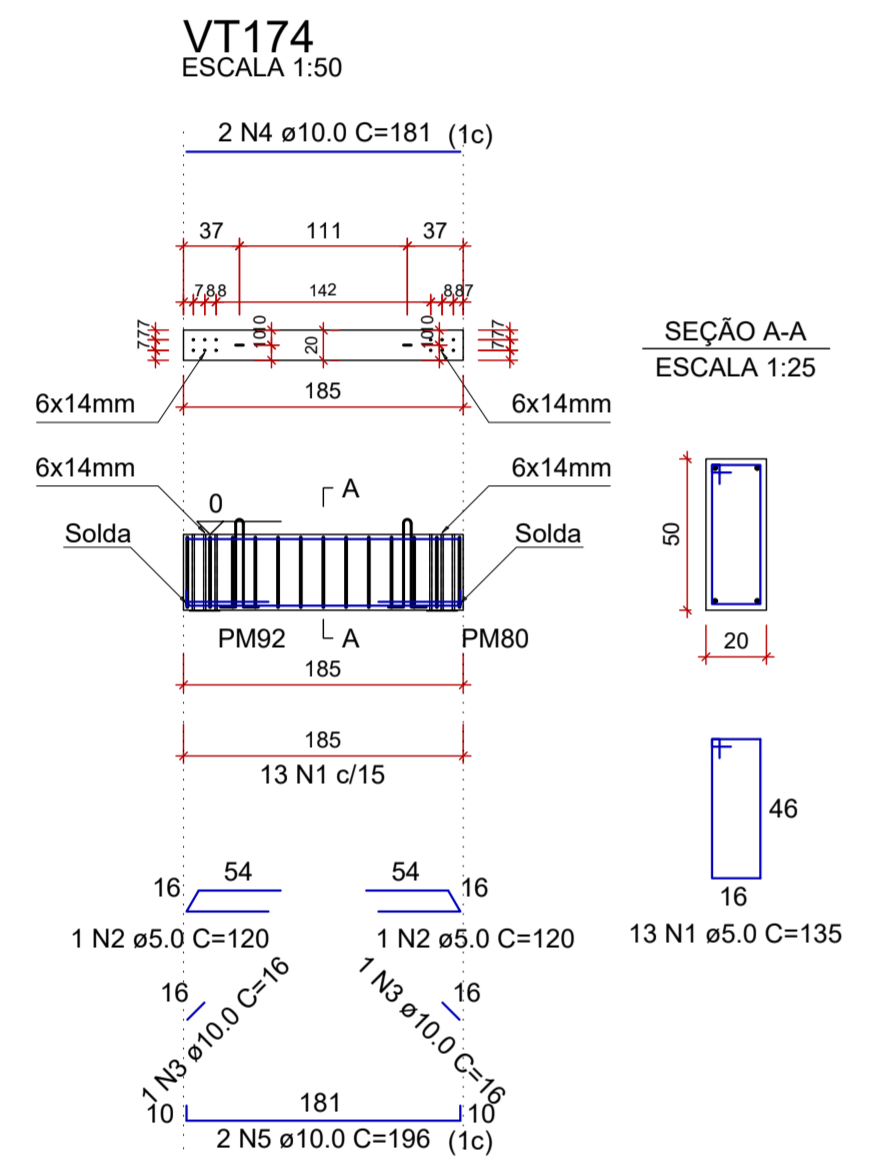
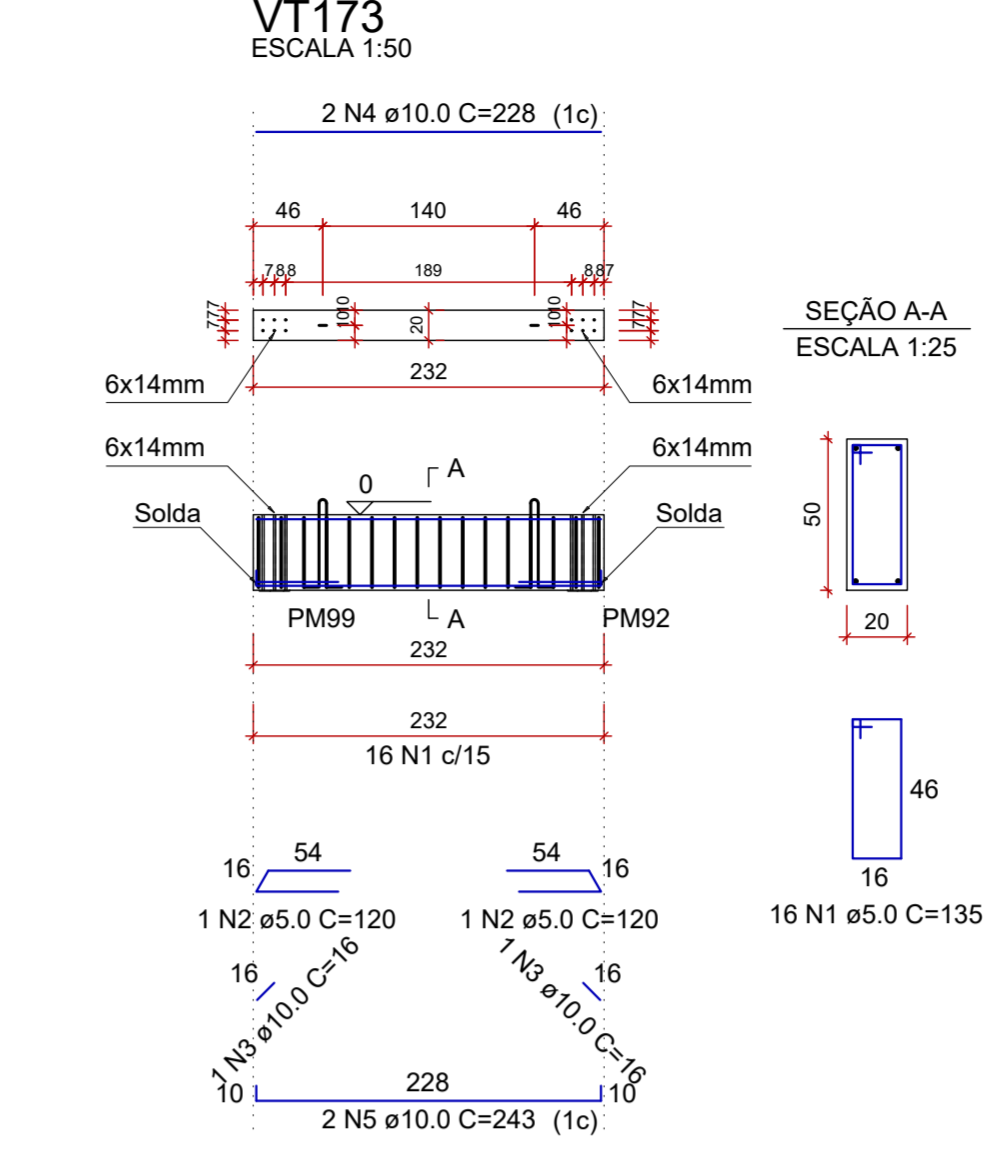
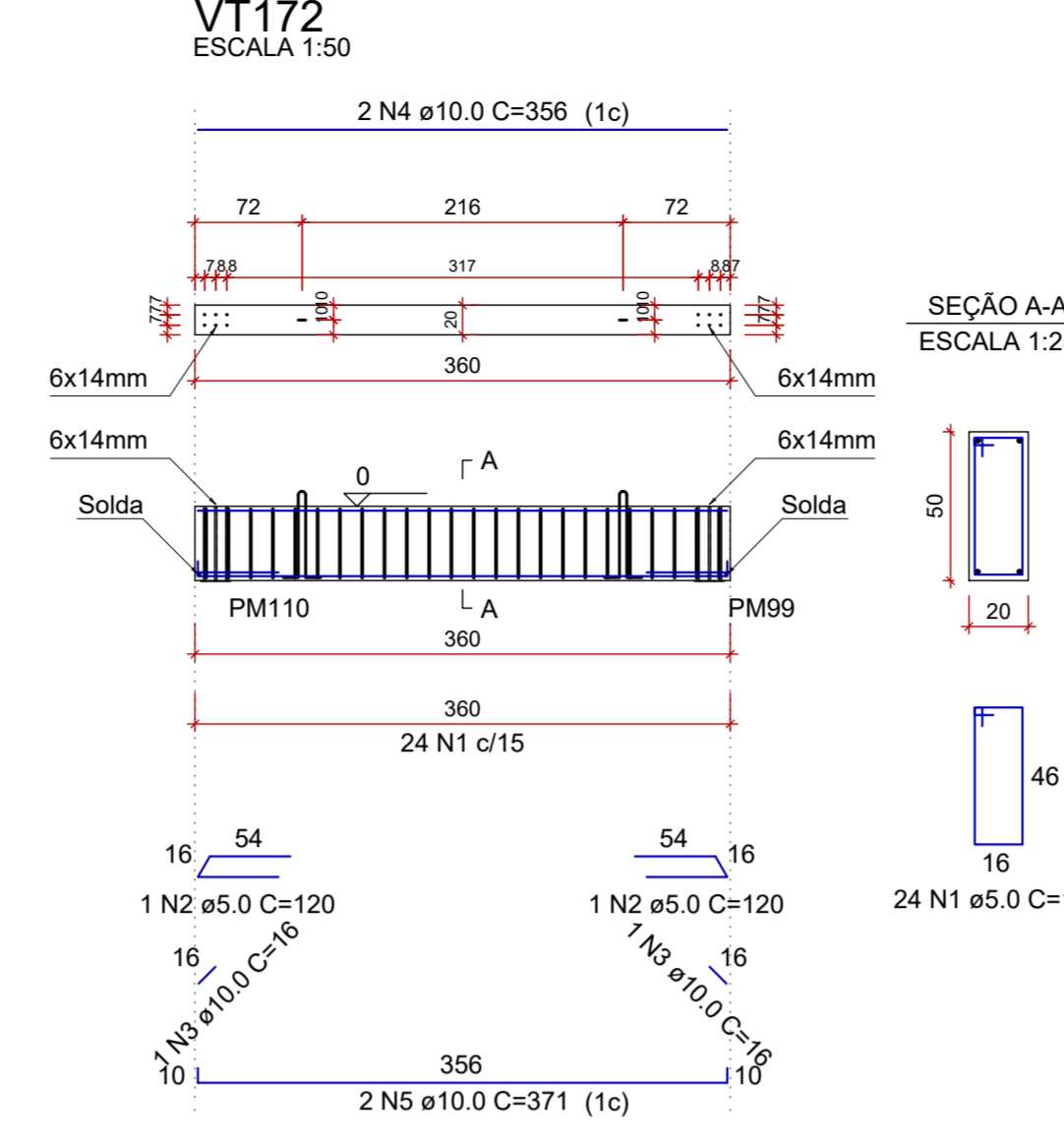
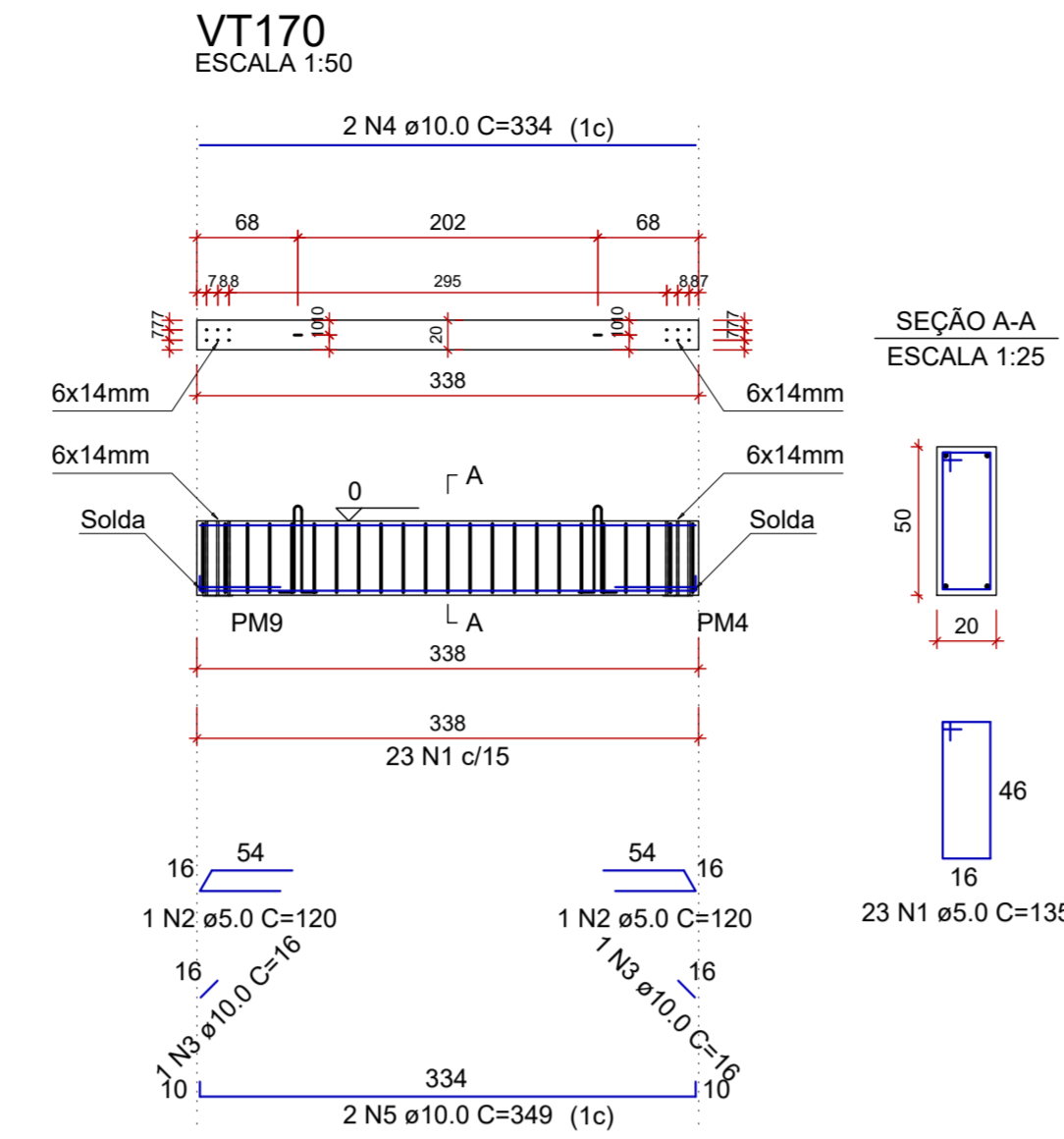
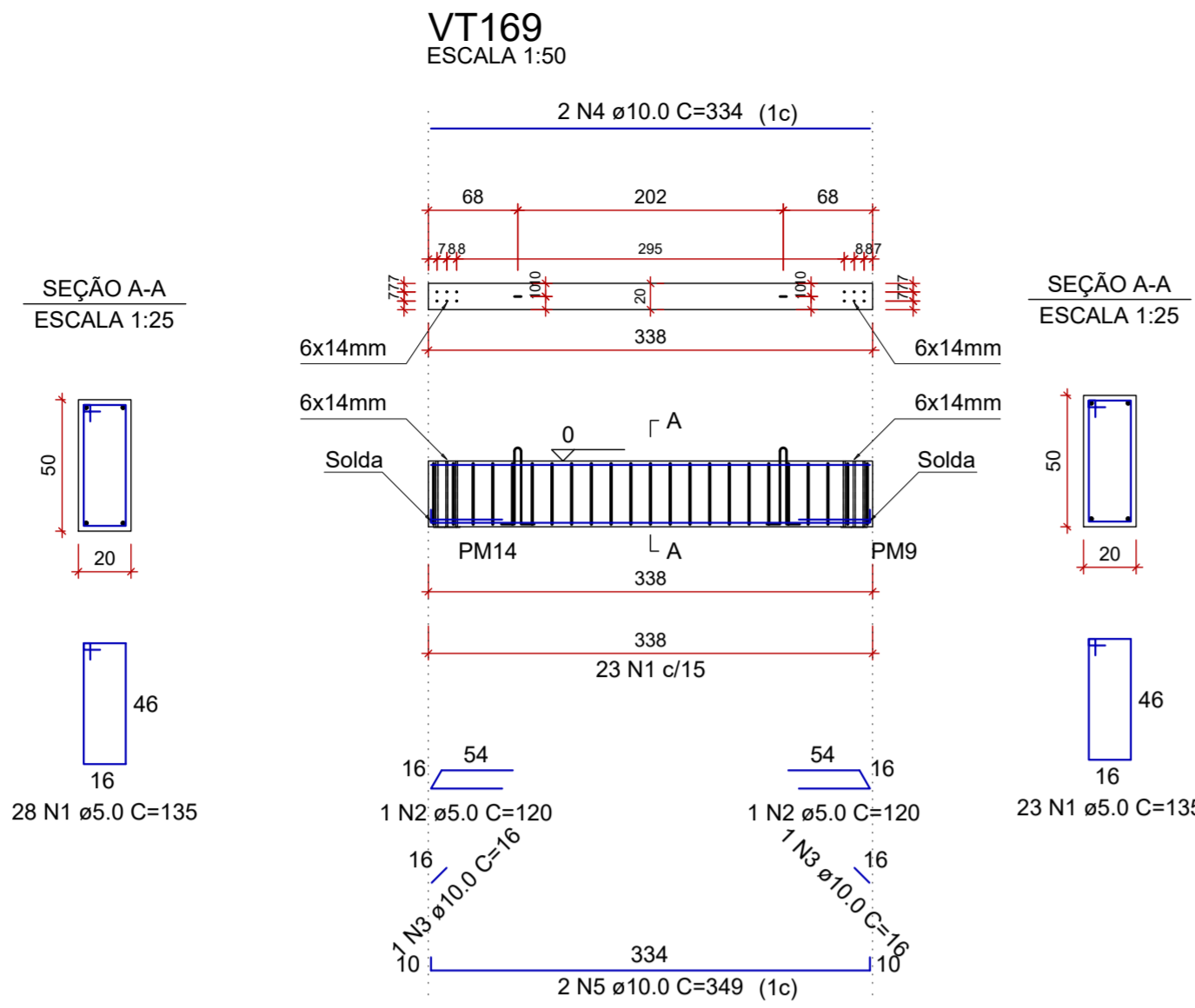
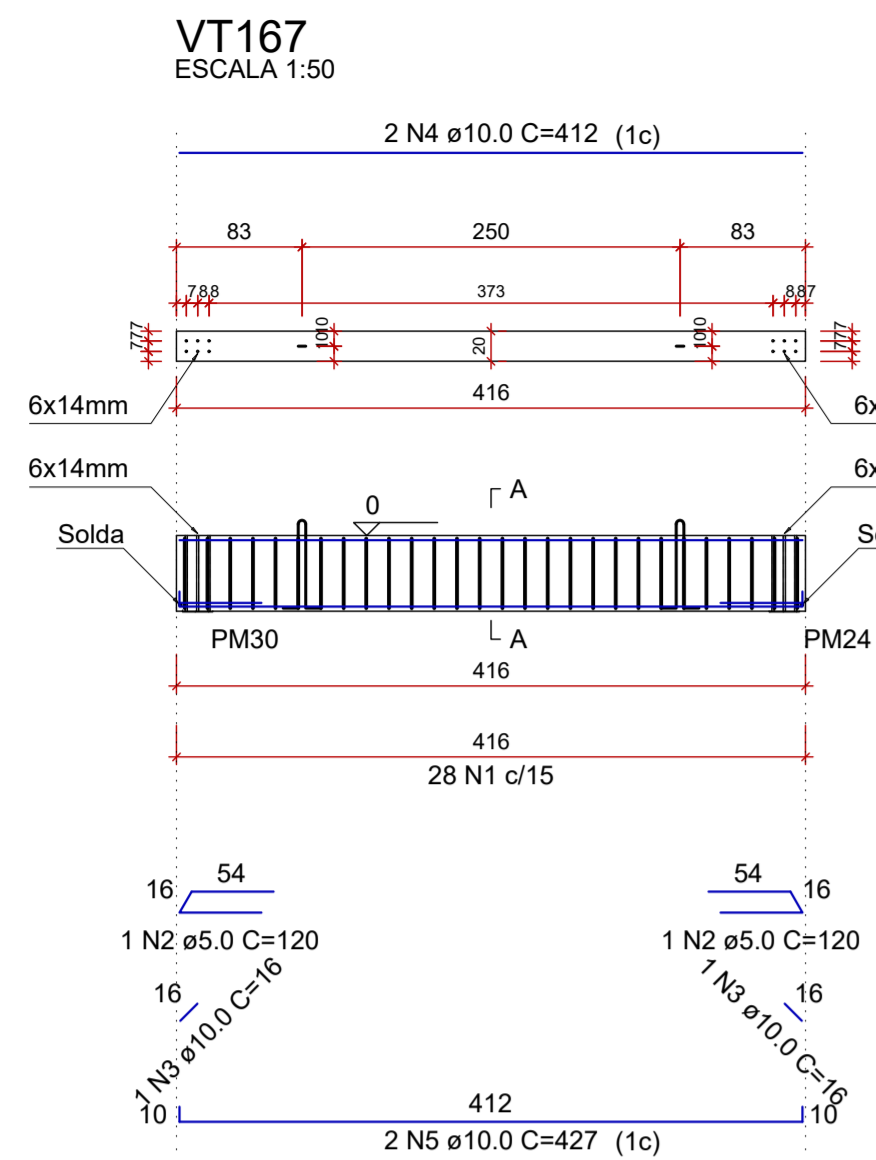


PROJETO ESTRUTURAL - CONSTRUÇÃO DA UNIDADE DE PRONTO ATENDIMENTO  
ESCALA INDICADA



**RESUMO DO AÇO**

AÇO	DIAM (mm)	C.TOTAL (m)	PESO + 10% (kg)
CA50	10.0	193.4	131.2
CA60	12.5	11	11.6
CA60	5.0	488.3	82.8
<b>PESO TOTAL (kg)</b>			<b>225.6</b>
CA50	142.8		
CA60	82.8		

Volume de concreto (C-30) = 4.94 m³

**Relação das alças de içamento**

Qtde.	Aço	Ø (mm)	C. Anc. (cm)	C. Unit. (cm)
30	ASTM A36	10	48	138

RELAÇÃO DO AÇO

ELEMENTO	AÇO	N	DIAM (mm)	QUANT	C.UNIT (cm)	C.TOTAL (cm)
VT167	CA60	1	5.0	28	135	3780
	CA60	2	5.0	20	240	240
	CA50	3	10.0	2	16	32
VT169	CA50	4	10.0	2	412	824
	CA50	5	10.0	2	427	854
	CA60	1	5.0	23	135	3105
	CA60	2	5.0	2	120	240
	CA50	3	10.0	2	16	32
VT170	CA50	4	10.0	2	334	668
	CA50	5	10.0	2	349	698
	CA60	1	5.0	23	135	3105
	CA60	2	5.0	2	120	240
	CA50	3	10.0	2	16	32
VT172	CA50	4	10.0	2	356	712
	CA50	5	10.0	2	371	742
	CA60	1	5.0	24	135	3240
	CA60	2	5.0	2	120	240
	CA50	3	10.0	2	16	32
VT173	CA50	4	10.0	2	360	720
	CA50	5	10.0	2	371	742
	CA60	1	5.0	16	135	2160
	CA60	2	5.0	2	120	240
	CA50	3	10.0	2	16	32
VT174	CA50	4	10.0	2	228	456
	CA50	5	10.0	2	239	478
	CA60	1	5.0	13	135	1755
	CA60	2	5.0	2	120	240
	CA50	3	10.0	2	16	32
VT175	CA50	4	10.0	2	213	426
	CA50	5	10.0	2	213	426
	CA60	1	5.0	14	135	1890
	CA60	2	5.0	2	120	240
	CA50	3	10.0	2	16	32
VT176	CA50	4	10.0	2	386	772
	CA50	5	10.0	2	401	802
	CA60	1	5.0	14	135	1890
	CA60	2	5.0	2	120	240
	CA50	3	10.0	2	16	32
VT177	CA50	4	10.0	2	486	972
	CA50	5	10.0	2	501	1002
	CA60	1	5.0	14	135	1890
	CA60	2	5.0	2	120	240
	CA50	3	10.0	2	16	32
VT178	CA50	4	10.0	2	490	980
	CA50	5	10.0	2	490	980
	CA60	1	5.0	14	135	1890
	CA60	2	5.0	2	120	240
	CA50	3	10.0	2	16	32
VT179	CA50	4	10.0	2	486	972
	CA50	5	10.0	2	501	1002
	CA60	1	5.0	14	135	1890
	CA60	2	5.0	2	120	240
	CA50	3	10.0	2	16	32
VT180	CA50	4	10.0	2	412	824
	CA50	5	10.0	2	427	854
	CA60	1	5.0	27	135	3645
	CA60	2	5.0	2	120	240
	CA50	3	10.0	2	16	32
VT182	CA50	4	10.0	2	399	798
	CA50	5	10.0	2	414	828
	CA60	1	5.0	17	135	2295
	CA60	2	5.0	2	120	240
	CA50	3	10.0	2	16	32
VT183	CA50	4	10.0	2	237	474
	CA50	5	10.0	2	252	504
	CA60	1	5.0	35	135	4725
	CA60	2	5.0	2	120	240
	CA50	3	10.0	2	16	32
VT184	CA50	4	12.5	2	16	32
	CA50	5	12.5	2	533	1066

REV. 02	07/07/23	CONFORME SOLICITAÇÕES DA VIGILÂNCIA SANITÁRIA	DAC
REV. 01	28/04/23	CONFORME SOLICITAÇÕES DA VIGILÂNCIA SANITÁRIA	DAC
REV. 00	31/01/23	EMISSÃO INICIAL	DAC
REVISÃO	DATA	DESCRIÇÃO	RESP.
		COORDENAÇÃO ALÓISIO CAETANO FERREIRA	
RESPONSÁVEL TÉCNICO E AUTOR ENG. CIVIL FLÁVIA BARBOSA CREA MG-18734/20			
EMPREENDIMENTO <b>CONSTRUÇÃO DA UNIDADE DE PRONTO ATENDIMENTO</b>			
ENDEREÇO RUA PIRANGUINHO, B. SÃO JOÃO POUSO ALEGRE - MINAS GERAIS		DISCIPLINA <b>ESTRUTURAL</b>	
ASSUNTO PROJETO ESTRUTURAL DETALHAMENTO DAS ARMAÇÕES VIGAS BALDRAME - PRÉ MOLDADAS		FASE DO PROJETO <b>EXECUTIVO</b>	
DATA INICIAL 31/01/2023		FOLHA Nº <b>25/72</b>	
ESCALA INDICADA		ARQUIVO DAC-PMPA-UPA-PE-EST-R02.DWG	