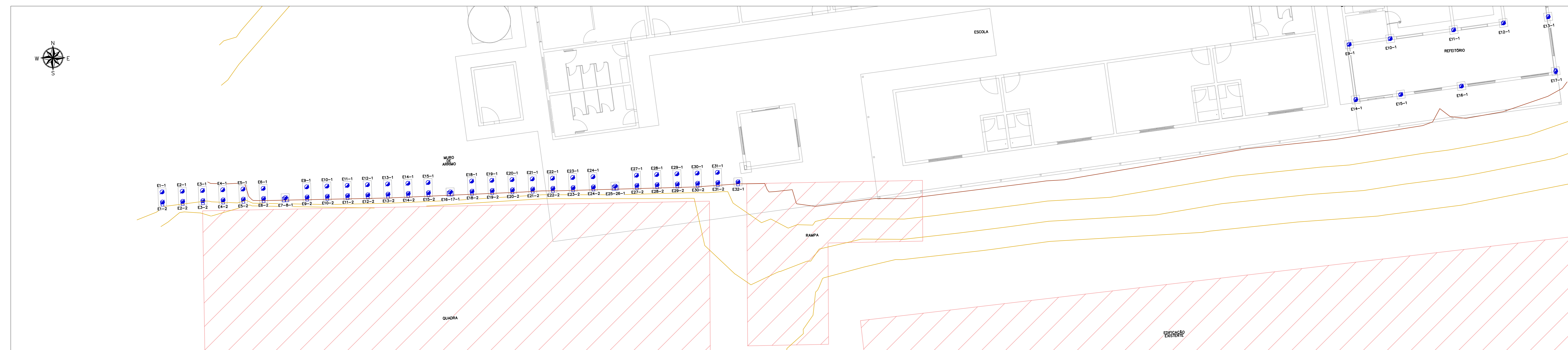
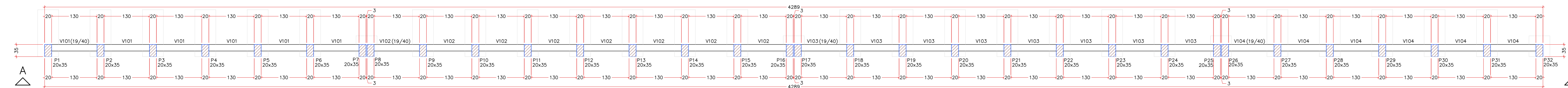


PLANTA DE LOCAÇÃO DAS ESTACAS
ESCALA 1:50

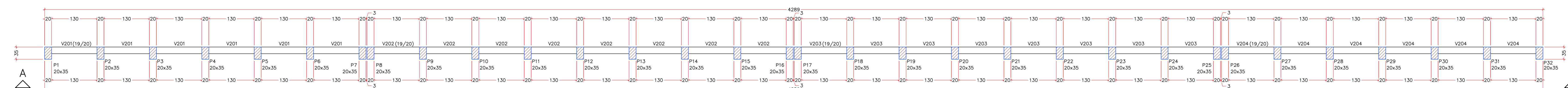
ESTACAS					
SÍMBOLOGIA	NOME	D (cm)	QUANTIDADE	PROFUNDIDADE (m)	CARGA MÁX. (t)
	C30	30,00	54	8,0	12,7



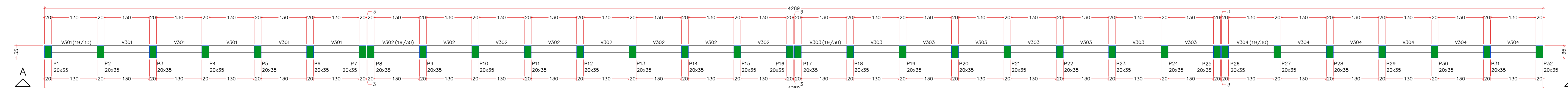
PLANTA DE LOCALIZAÇÃO DO MURO DE ARRIMO
ESCALA 1:125



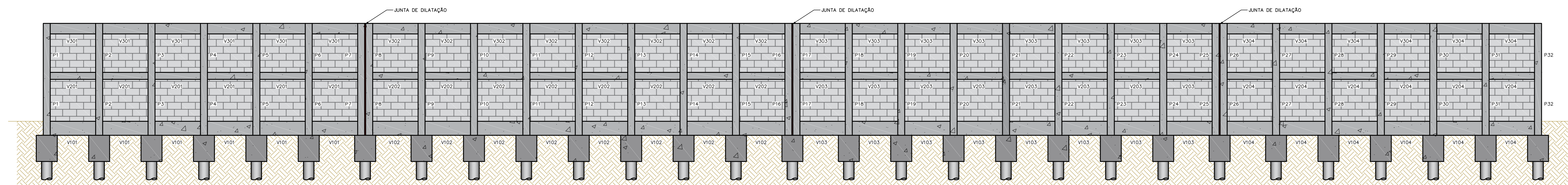
FORMA DO PAVIMENTO LANCE 1 (NÍVEL 0)
ESCALA 1:50



FORMA DO PAVIMENTO LANCE 2 (NÍVEL 140)
ESCALA 1:50



FORMA DO PAVIMENTO LANCE 3 (NÍVEL 280)
ESCALA 1:50



CORTE A-A
ESCALA 1:50

QUADRO DE ESTACAS

ESTACA MOLDADA IN LOCO DO TIPO ESCAVADA

QUANTIDADE: 54 ESTACAS(S)

FOFO: 25 MPa

DIÂMETRO DA ESTACA: 30 cm

COBERTURA DE CONCRETO: 4 cm

COMPIMENTO DA ESTACA: 800 cm

SEÇÃO

30,0 cm

ARRANQUE

ESTRIBOS

37 N2 Ø 6,3
c/15 C=79,0

TABELA DE AÇO

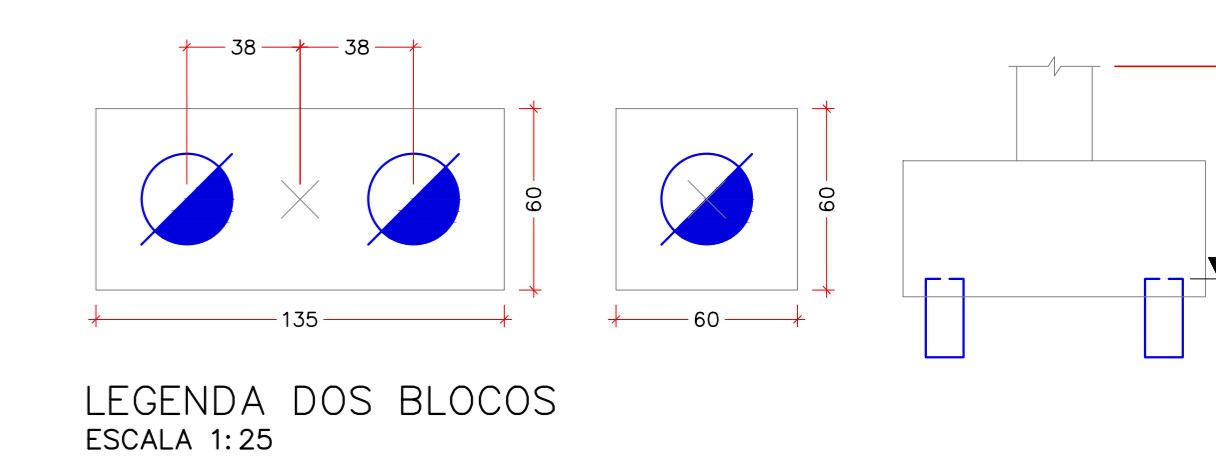
POS.	Ø (mm)	QUANT.	COMPR. LIN. (cm)	COMPR. TOTAL (cm)
N1	16,0	216	600,0	129600,0
N2	6,3	1998	79,0	157842,0

RESUMO DO AÇO

AÇO (mm)	COMPR. (m)	PESO (kg)	BARRAS (12 m)
CASO 16,0	1296,0	2056,8	108
CASO 6,3	1578,4	386,7	132
PESO TOTAL DO AÇO + 10% =		2443,5	
VOLUME TOTAL DE CONCRETO =		33,59 m³	

LOCALIZAÇÃO DAS ESTACAS

BLOCO	NOME	TIPO	LATITUDE	LONGITUDE	CARGA MÁX. (t)	CA (cm)
B1	E1-1	C30	7544155.3522	406646.0167	8.49	-110
B1	E1-2	C30	7544154.6028	406646.0430	-5.18	-110
B2	E2-1	C30	7544155.4048	406647.5158	9.22	-110
B2	E2-2	C30	7544154.6553	406647.5421	-4.58	-110
B3	E3-1	C30	7544155.4574	406649.0149	8.22	-110
B3	E3-2	C30	7544154.0719	406649.0412	-4.22	-110
B4	E4-1	C30	7544155.5107	406650.5340	9.22	-110
B4	E4-2	C30	7544154.7605	406650.5403	-4.63	-110
B5	E5-1	C30	7544155.5627	406652.0130	9.22	-110
B5	E5-2	C30	7544154.8132	406652.0393	-4.62	-110
B6	E6-1	C30	7544155.6153	406653.5121	9.22	-110
B6	E6-2	C30	7544154.8658	406653.5384	-4.58	-110
B9	E9-1	C30	7544155.7287	406656.7401	9.22	-110
B9	E9-2	C30	7544154.9791	406656.7664	-4.58	-110
B10	E10-1	C30	7544155.7813	406658.2392	9.22	-110
B10	E10-2	C30	7544155.0318	406658.2655	-4.62	-110
B11	E11-1	C30	7544155.8339	406659.7383	9.22	-110
B11	E11-2	C30	7544155.0844	406659.7646	-4.63	-110
B12	E12-1	C30	7544155.8866	406661.2312	9.22	-110
B12	E12-2	C30	7544155.1370	406661.2637	-4.63	-110
B13	E13-1	C30	7544155.9392	406662.7364	9.22	-110
B13	E13-2	C30	7544155.1897	406662.7627	-4.63	-110
B14	E14-1	C30	7544155.9918	406664.2355	9.22	-110
B14	E14-2	C30	7544155.2423	406664.2618	-4.62	-110
B15	E15-1	C30	7544156.0443	406665.7346	9.22	-110
B15	E15-2	C30	7544155.2949	406665.7609	-4.58	-110
B18	E18-1	C30	7544156.1578	406668.9626	9.22	-110
B18	E18-2	C30	7544155.4082	406668.9889	-4.58	-110
B19	E19-1	C30	7544156.2104	406670.4617	9.22	-110
B19	E19-2	C30	7544155.4609	406670.4880	-4.62	-110
B20	E20-1	C30	7544156.3630	406671.9607	9.22	-110
B20	E20-2	C30	7544155.6135	406671.9871	-4.63	-110
B21	E21-1	C30	7544156.3157	406673.4598	9.22	-110
B21	E21-2	C30	7544155.5661	406673.4861	-4.63	-110
B22	E22-1	C30	7544156.3683	406674.9589	9.22	-110
B22	E22-2	C30	7544155.6188	406674.9852	-4.63	-110
B23	E23-1	C30	7544156.4209	406676.4300	9.22	-110
B23	E23-2	C30	7544155.6714	406676.4563	-4.62	-110
B24	E24-1	C30	7544156.4738	406677.9570	9.22	-110
B24	E24-2	C30	7544155.7240	406677.9834	-4.58	-110
B27	E27-1	C30	7544156.5869	406681.1851	9.22	-110
B27	E27-2	C30	7544155.8374	406681.2114	-4.58	-110
B28	E28-1	C30	7544156.6390	406682.6841	9.22	-110
B28	E28-2	C30	7544155.8900	406682.7105	-4.62	-110
B29	E29-1	C30	7544156.6922	406684.1832	9.22	-110
B29	E29-2	C30	7544155.9428	406684.2095	-4.63	-110
B30	E30-1	C30	7544156.7448	406685.6823	9.22	-110
B30	E30-2	C30	7544155.9953	406685.7086	-4.62	-110
B31	E31-1	C30	7544156.7974	406687.1614	9.22	-110
B31	E31-2	C30	7544156.0479	406687.2077	-4.58	-110
B32	E32-1	C30	7544156.1005	406688.7068	2.45	-110
B7-8	E7-8-1	C30	7544154.9225	406655.1524	4.20	-110
B7-8	E7-8-2	C30	7544155.3516	406667.3749	4.20	-110
B25-26	E25-26-1	C30	7544155.7807	406679.5974	4.20	-110



LEGENDA DOS BLOCOS
ESCALA 1:25

REV. 00 18/06/24 EMISSÃO INICIAL

REVISÃO: DATA / DESCRIÇÃO

Prefeitura Municipal de Pouso Alegre

DAC Engenharia

Rua Cel. Joaquim Francisco, 341, Bairro Virgínia
CEP: 37501-052 - Pouso Alegre / MG
Tel: (31) 3623-8844
www.dacengenharia.com.br

COORDENADOR: ALDOSONO FERREIRA

RESPONSÁVEL TÉCNICO E AUTOR: ENL. FLÁVIA C. BARBOSA MG-187.842/0

PROJETO: RUA VENERANDO SCODELER, BELLA ITALIA, POUSO ALEGRE - MINAS GERAIS

CONSTRUÇÃO DO REFEITÓRIO DA E.M. VASCONCELOS COSTA

ESTRUTURAL EXECUTIVO

FASE DO PROJETO: EXECUTIVO

11/13

18/06/2024