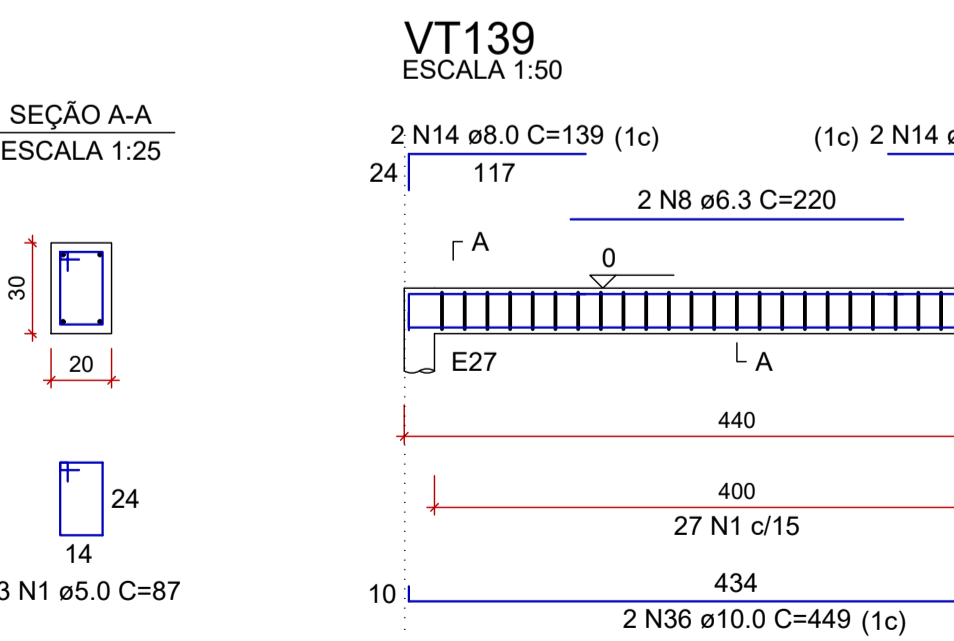
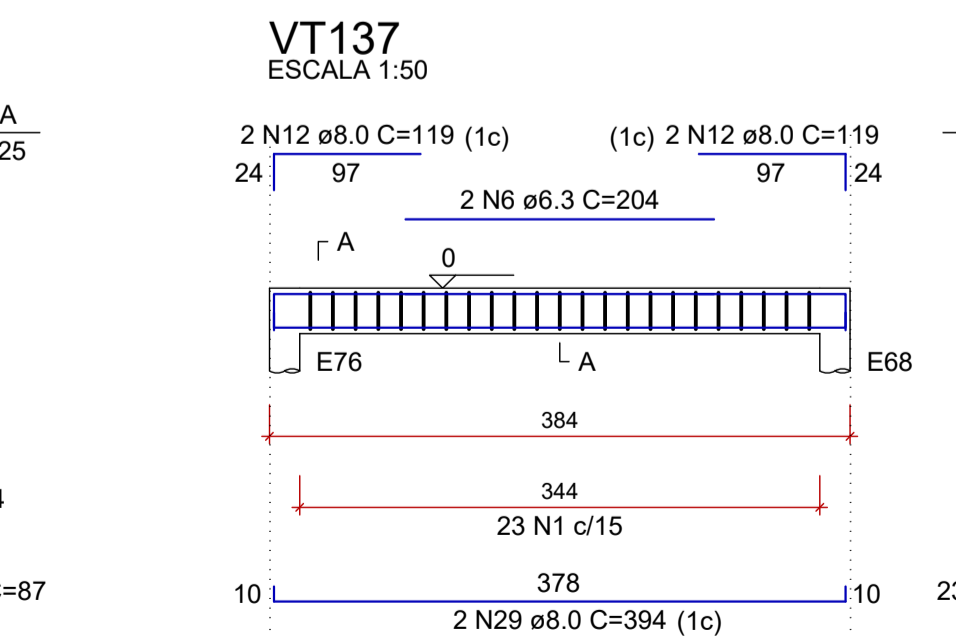
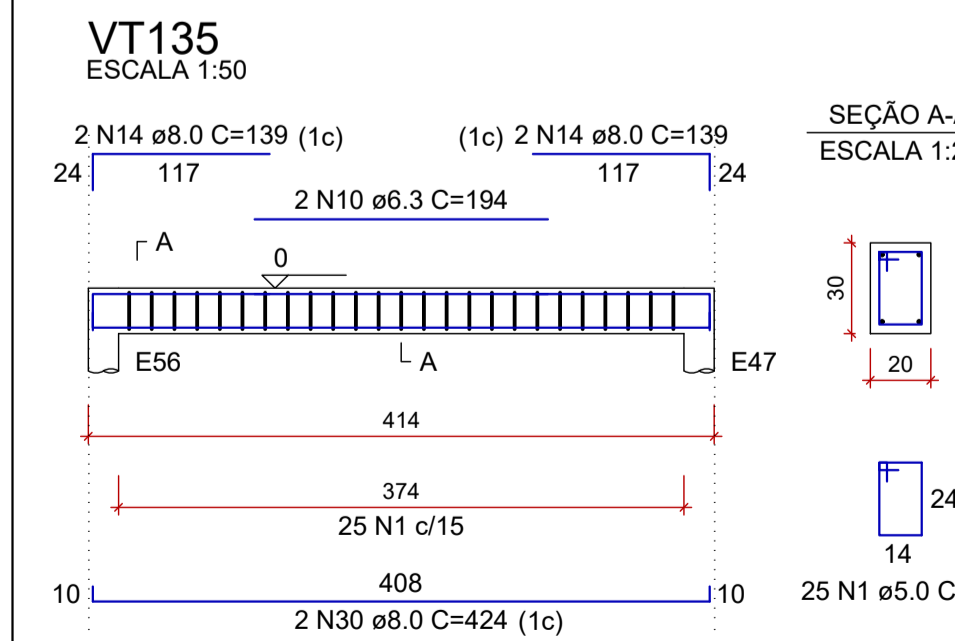
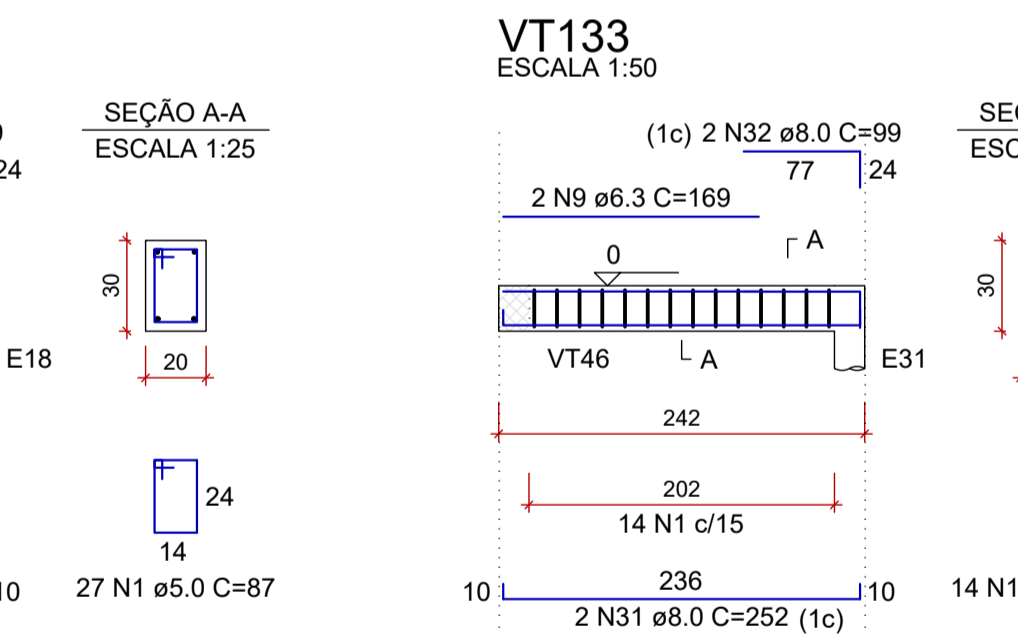
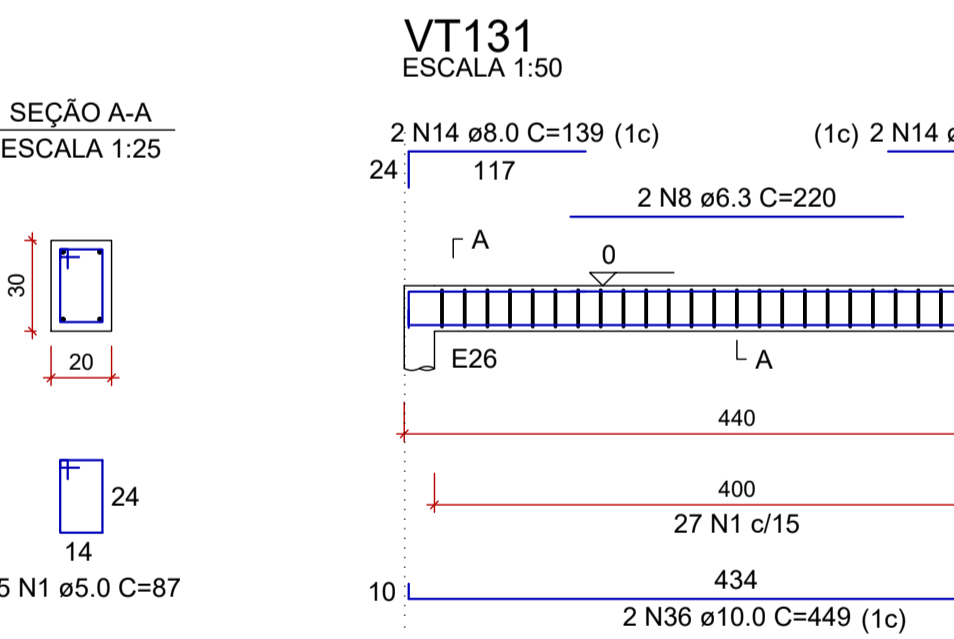
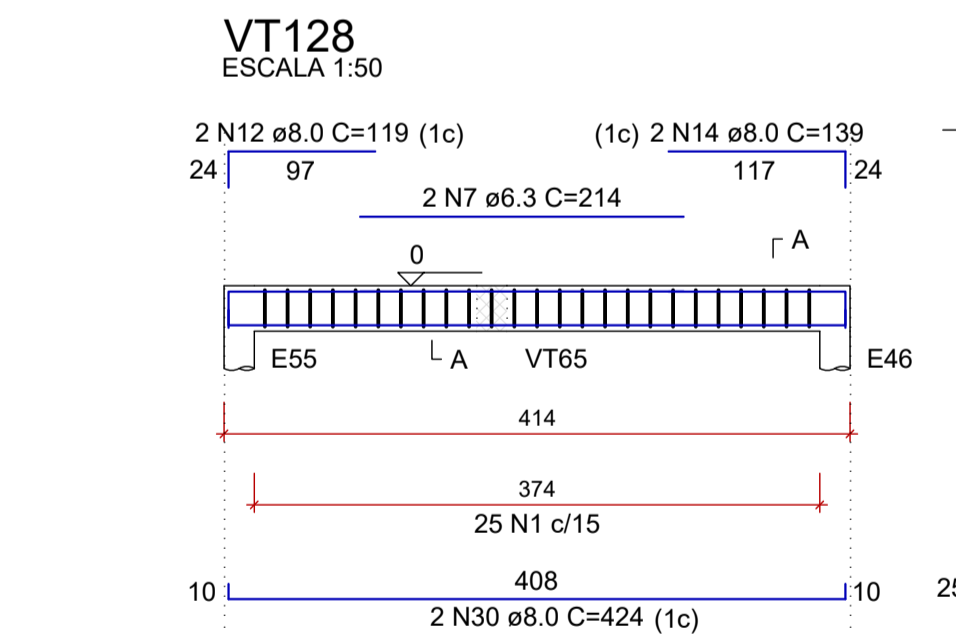
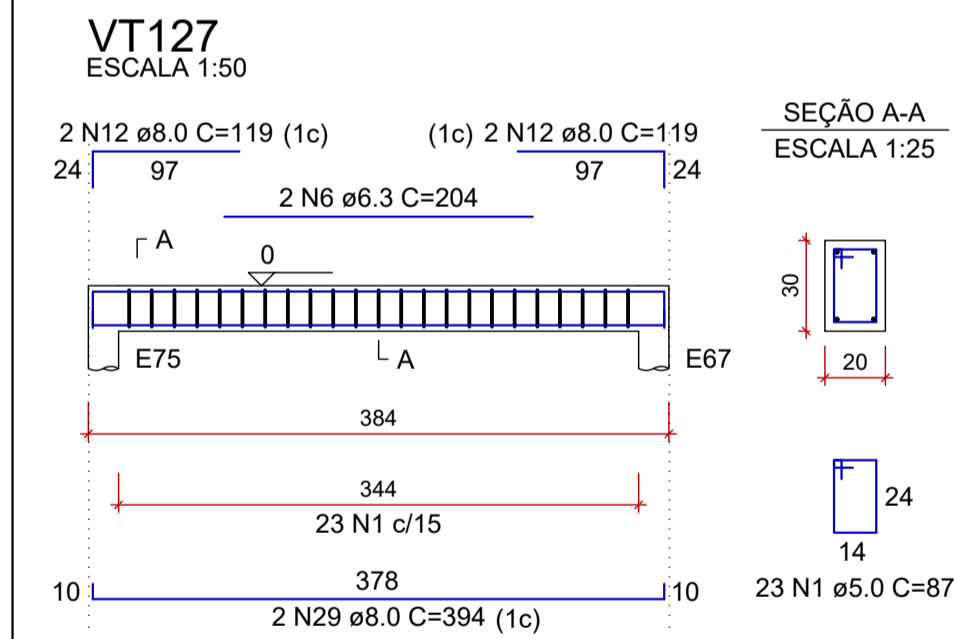
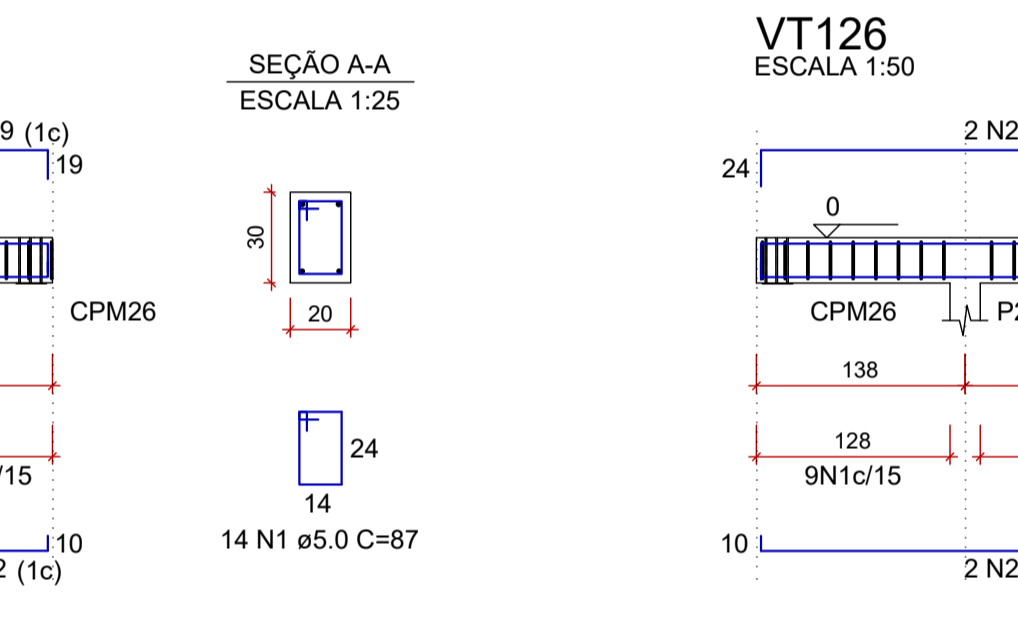
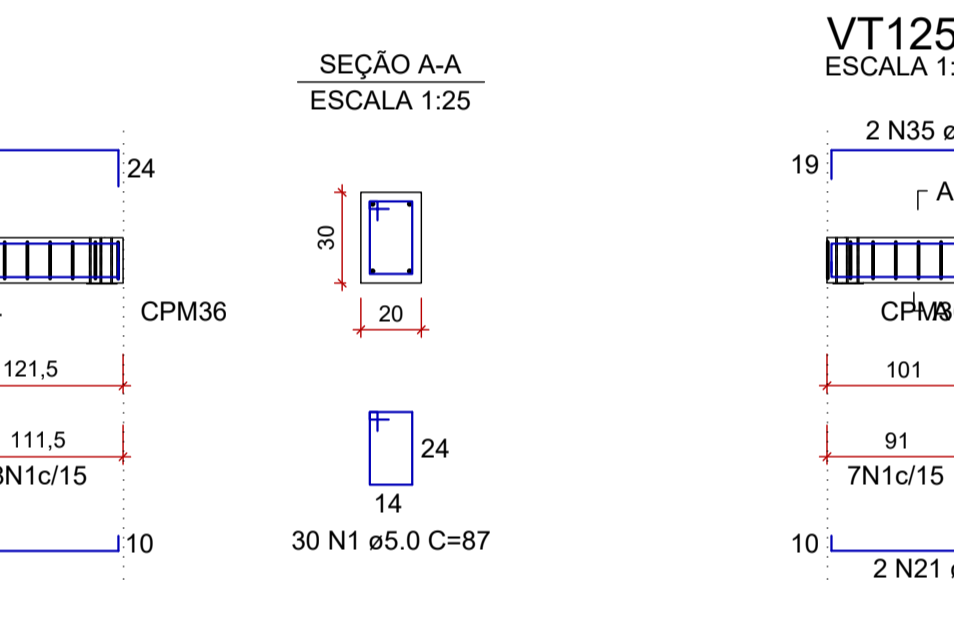
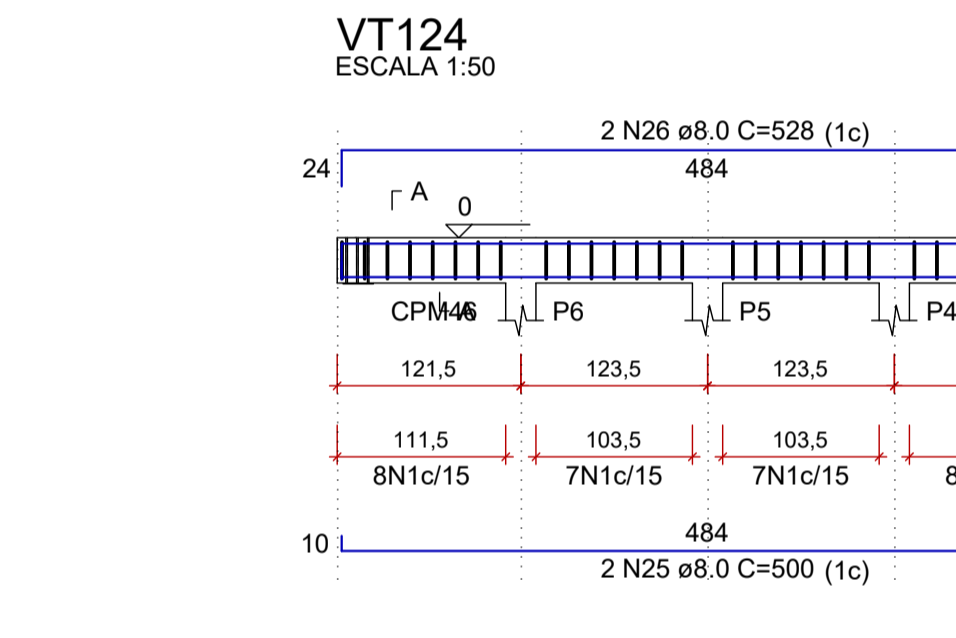
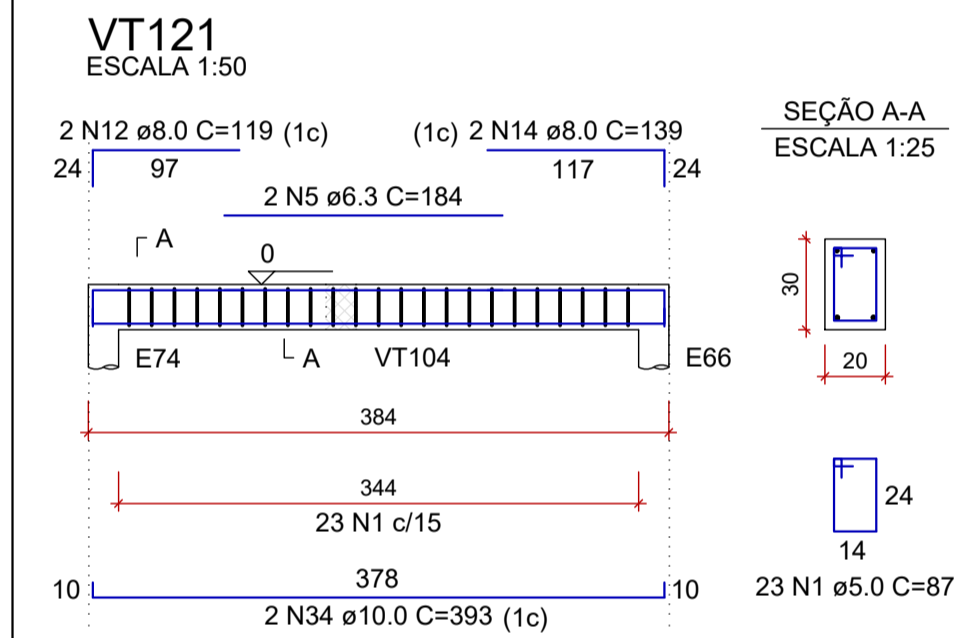
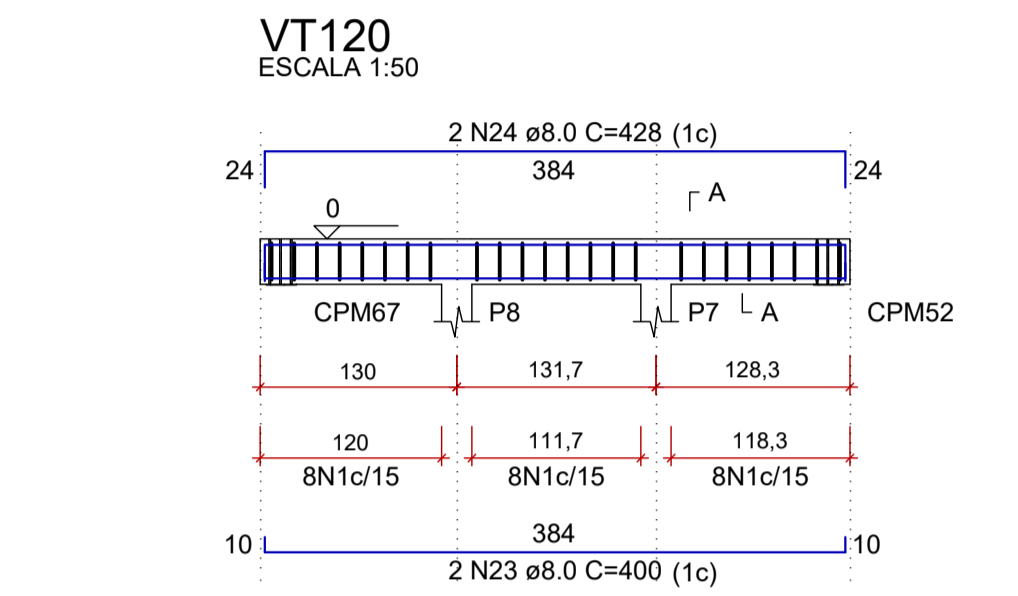
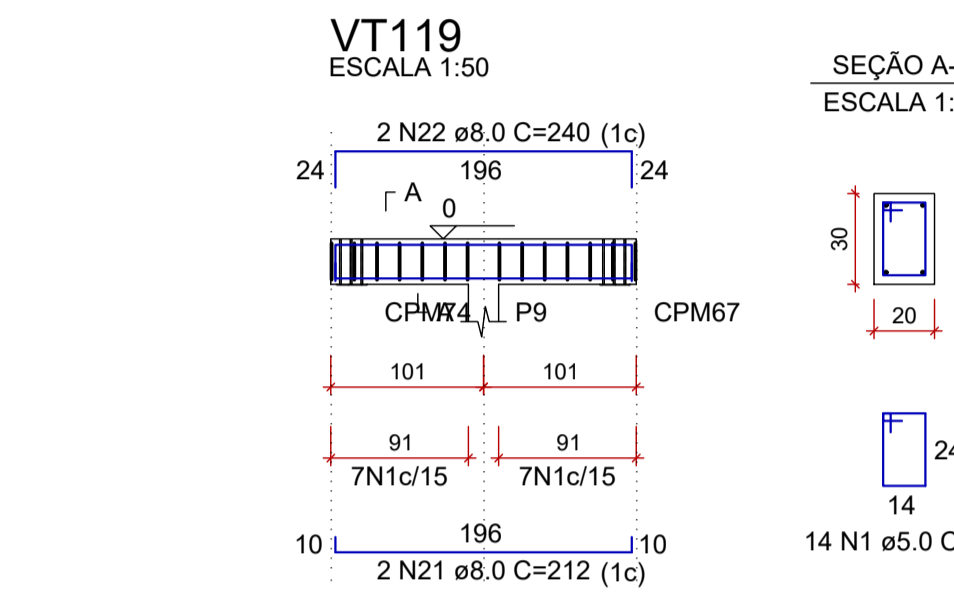
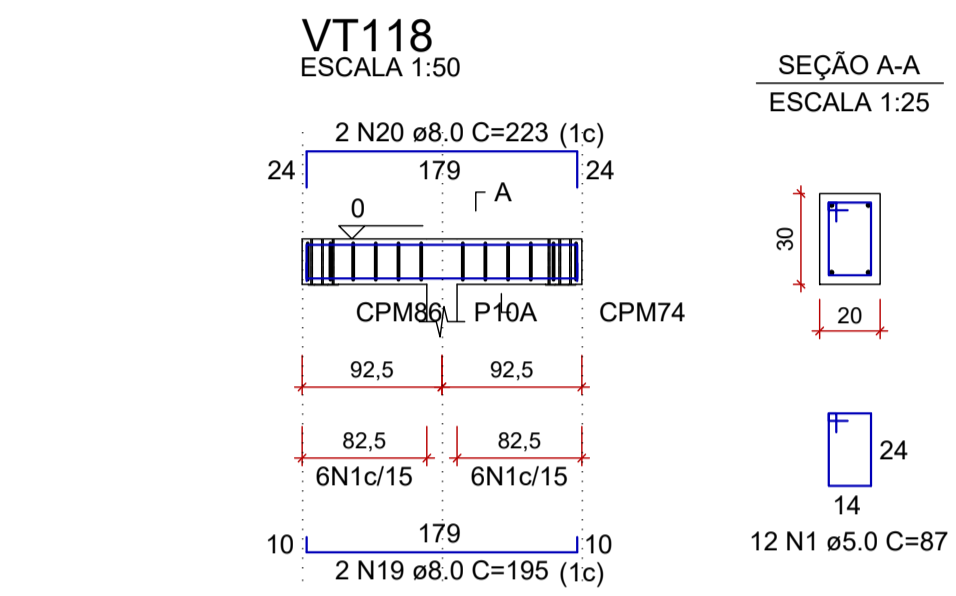
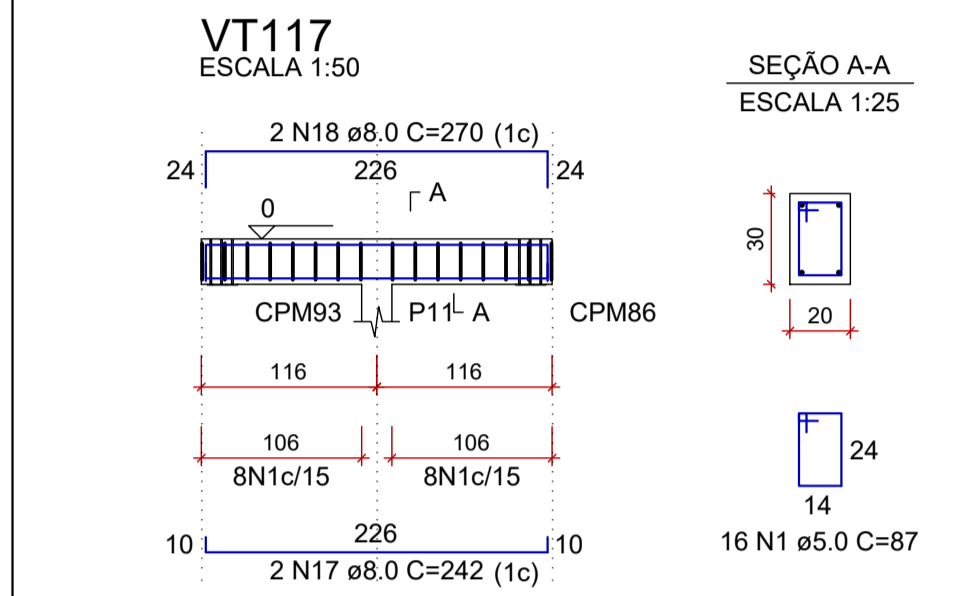
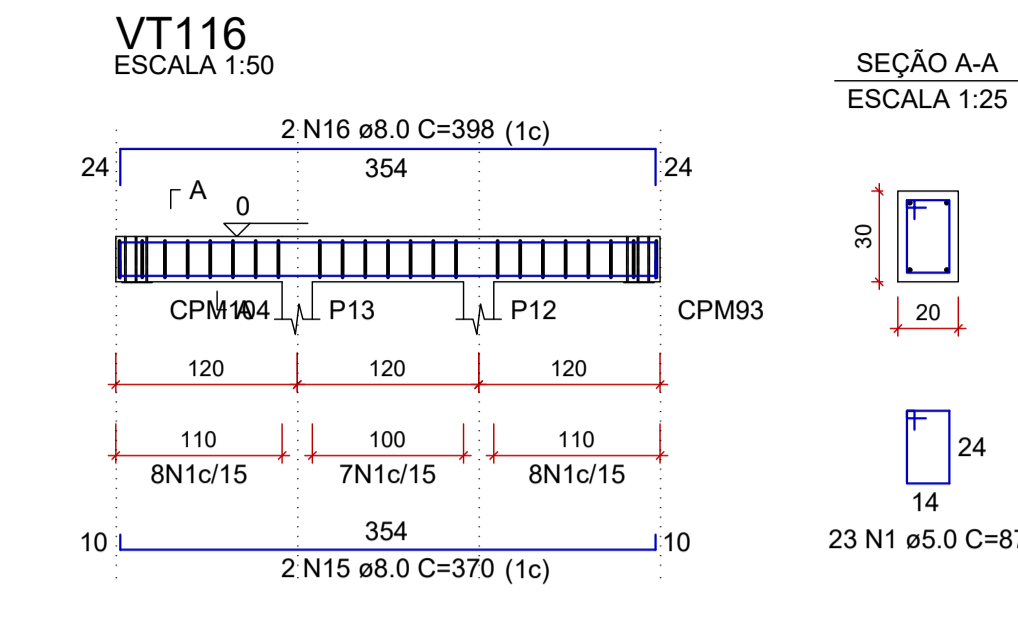
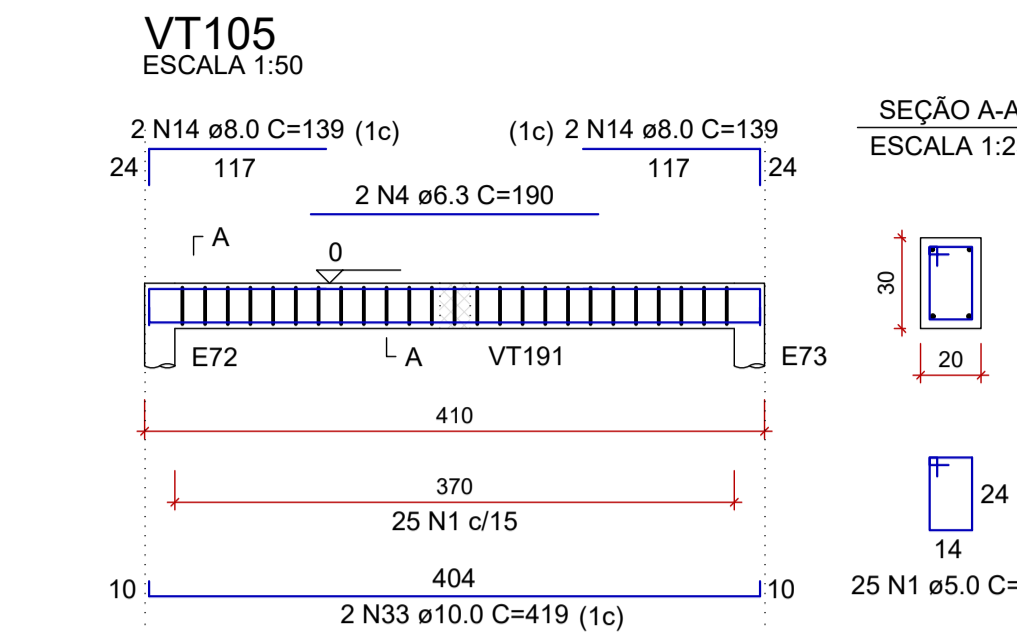
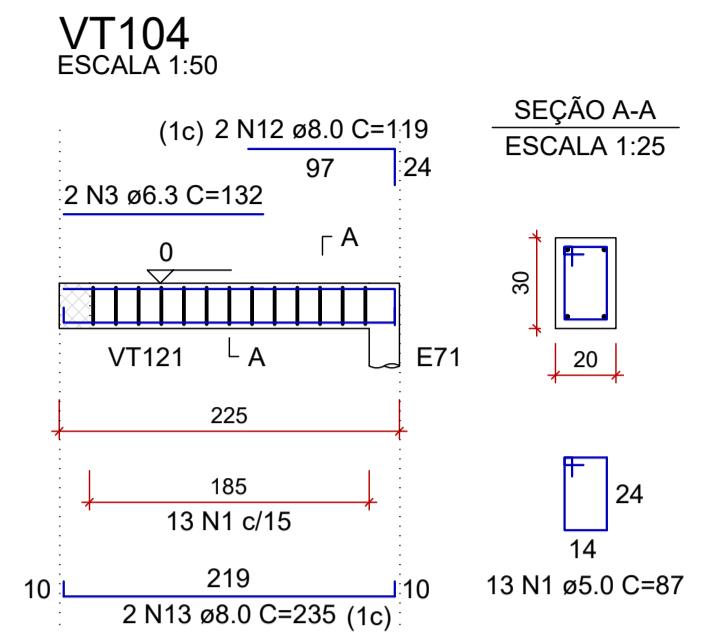
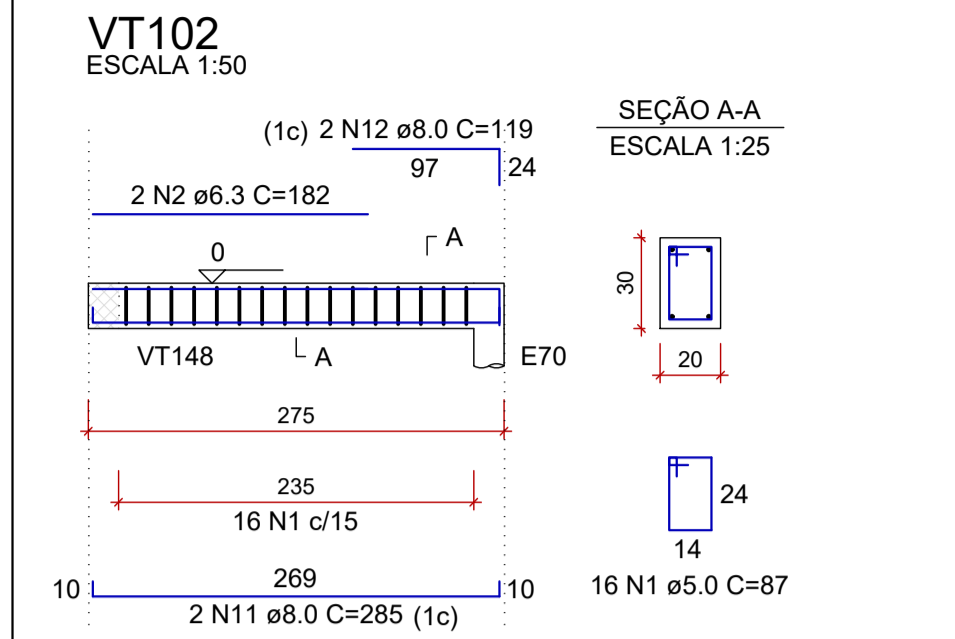


PROJETO ESTRUTURAL - CONSTRUÇÃO DA UNIDADE DE PRONTO ATENDIMENTO  
ESCALA INDICADA



RELAÇÃO DO AÇO

AÇO	N	DIAM (mm)	QUANT	C.UNIT (cm)	C.TOTAL (cm)
CA60	1	5.0	400	87	34800
CA50	2	6.3	2	182	364
	3	6.3	2	132	264
	4	6.3	2	190	380
	5	6.3	2	184	368
	6	6.3	4	204	816
	7	6.3	2	214	428
	8	6.3	4	220	880
	9	6.3	2	169	338
	10	6.3	2	194	388
	11	8.0	2	285	570
	12	8.0	16	119	1904
	13	8.0	2	235	470
	14	8.0	20	139	2780
	15	8.0	2	370	740
	16	8.0	2	398	796
	17	8.0	2	242	484
	18	8.0	2	270	540
	19	8.0	2	195	390
	20	8.0	2	223	446
	21	8.0	4	212	848
	22	8.0	2	240	480
	23	8.0	2	400	800
	24	8.0	2	428	856
	25	8.0	2	500	1000
	26	8.0	2	528	1056
	27	8.0	2	426	852
	28	8.0	2	454	908
	29	8.0	4	394	1576
	30	8.0	4	424	1696
	31	8.0	2	252	504
	32	8.0	2	99	198
	33	10.0	2	419	838
	34	10.0	2	393	786
	35	10.0	2	229	458
	36	10.0	4	449	1796

RESUMO DO AÇO

AÇO	DIAM (mm)	C.TOTAL (m)	PESO + 10% (kg)
CA50	6.3	42.3	11.4
	8.0	198.9	86.3
	10.0	38.8	26.3
CA60	5.0	348	59
<b>PESO TOTAL (kg)</b>			
CA50			124
CA60			59

Volume de concreto (C-30) = 3.62 m³  
Área de forma = 48.17 m²

REV. 02	07/07/23	CONFORME SOLICITAÇÕES DA VIGILANCIA SANITÁRIA	DAC
REV. 01	28/04/23	CONFORME SOLICITAÇÕES DA VIGILANCIA SANITÁRIA	DAC
REV. 00	31/01/23	EMIÇÃO INICIAL	DAC
REVISÃO:	DATA:	DESCRIÇÃO:	RESP.:

Prefeitura Municipal de Pouso Alegre

PROJETO	COORDENAÇÃO
	ALÍSSIO CAETANO FERREIRA
Rua Miguel Vianna, nº 81, 2º Andar Bairro Morro Chic CEP: 37500-080 - Itajubá / MG Tel: (35) 3623-8846 www.dacengenharia.com.br	RESPONSÁVEL TÉCNICO E AUTOR
	ENG. CIVIL FLÁVIA BARBOSA CREA-MS-187.842/D

**EMPRESAMENTO**  
CONSTRUÇÃO DA UNIDADE DE PRONTO ATENDIMENTO

ENDEREÇO	DISCIPLINA
RUA PIRANGUINHO, B. SÃO JOÃO POUSO ALEGRE - MINAS GERAIS	ESTRUTURAL
ASSUNTO	FASE DO PROJETO
PROJETO ESTRUTURAL DETALHAMENTO DAS ARMAÇÕES VIGAS BALDRAME	EXECUTIVO
	FOLHA Nº
	14/72

DATA INICIAL	ESCALA	REVISÃO	ARQUIVO
31/01/2023	INDICADA	R01	DAC-PMPA-UPA-PE-EST-R02.DWG