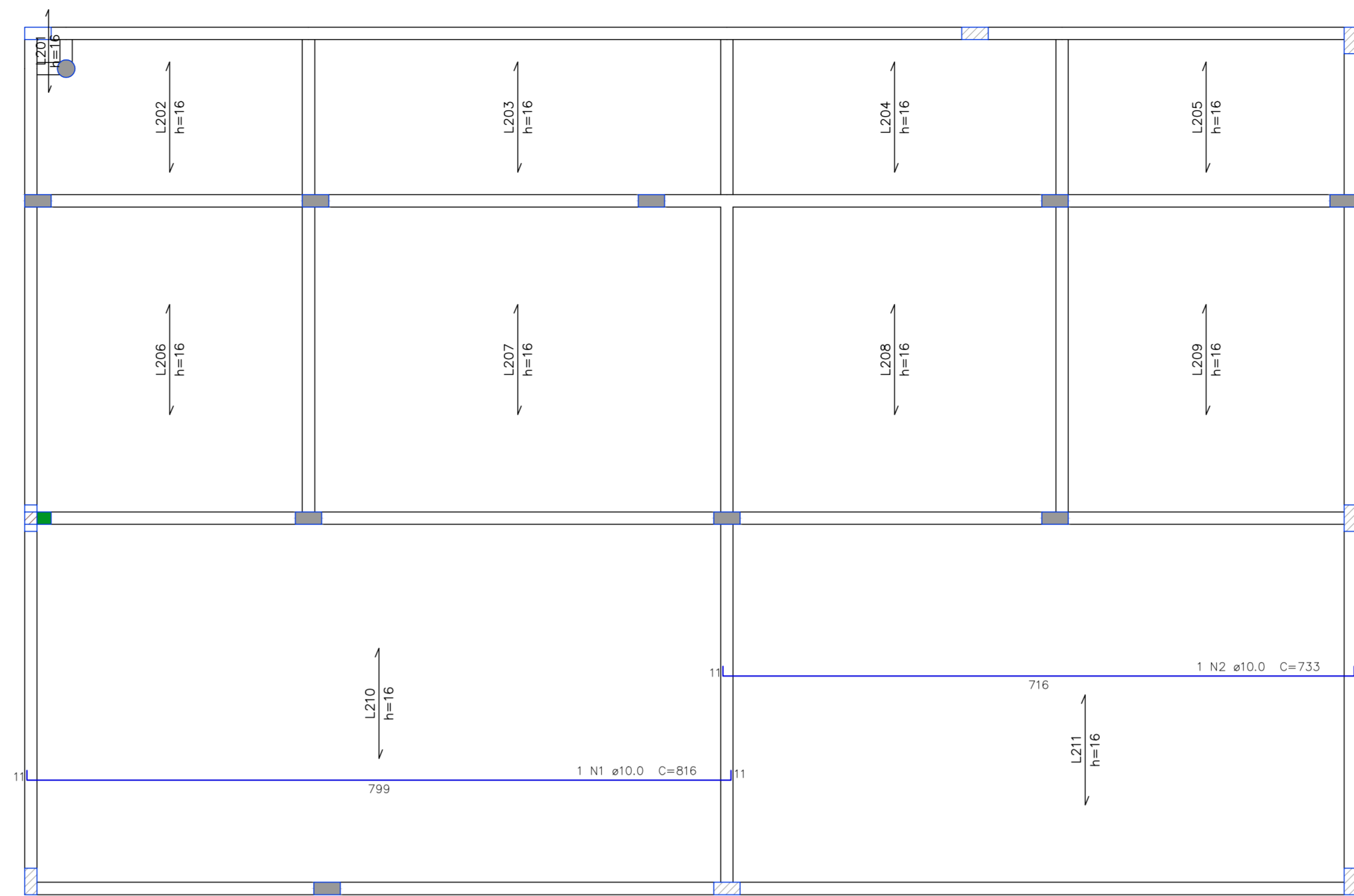
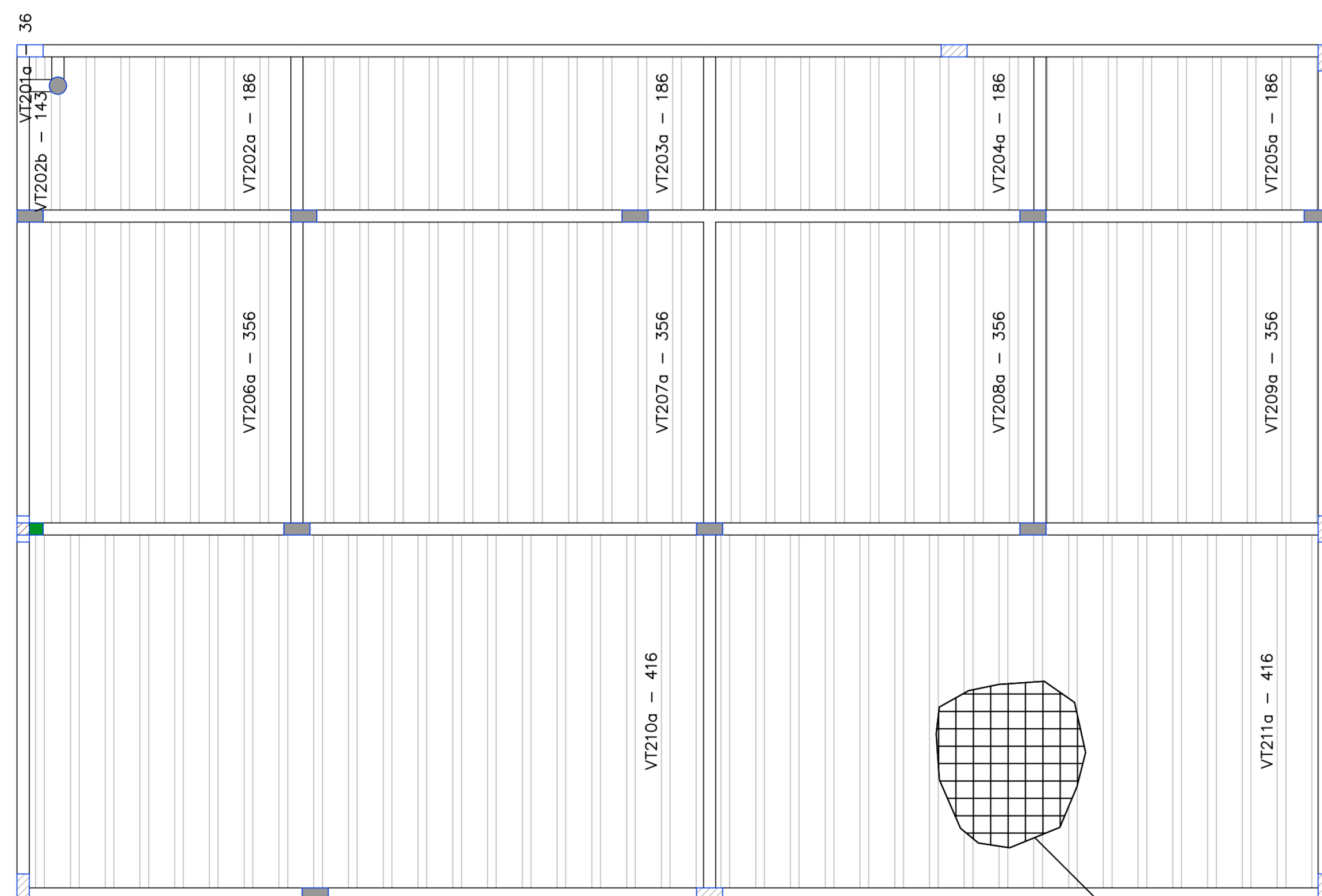


ARMAÇÃO NEGATIVA DAS LAJES DO PAVIMENTO COBERTURA  
ESCALA 1:50

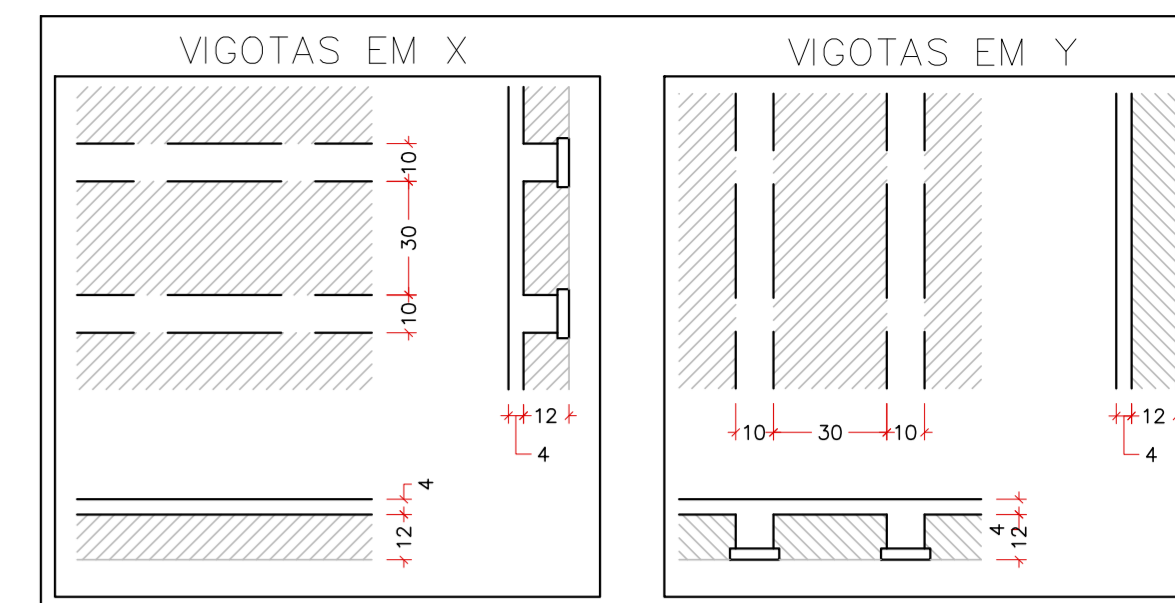


ARMAÇÃO POSITIVA DAS LAJES DO PAVIMENTO COBERTURA  
ESCALA 1:50



PLANTA DE VIGOTAS PRÉ-MOLDADAS  
ESCALA 1:50

APLICAR A MALHA  
CA-60 4,20 x 4,20  
mm c/15x15cm EM  
TODA LAJE



LAJE H16 – TRELIÇA TR12  
ESCALA 1:20

Relação do aço

ELEMENTO	AÇO	N	DIAM (mm)	QUANT	C.UNIT (cm)	C.TOTAL (cm)
Negativos	CA60	1	3.4	20	224	4480
	CA50	2	6.3	16	219	3504
	CA50	3	8.0	2	VAR	VAR
	CA50	4	8.0	16	690	11040
	CA50	5	8.0	19	722	13718
	CA50	6	8.0	16	394	6304
	CA50	7	8.0	24	656	15744
Positivos	CA50	1	10.0	1	816	816
	CA50	2	10.0	1	733	733

Resumo do aço

AÇO	DIAM (mm)	C.TOTAL (m)	PESO + 10% (kg)
CA50	6.3	35.1	9.4
	8.0	469.9	203.9
	10.0	15.5	10.5
CA60	3.4	44.8	3.5
<b>PESO TOTAL (kg)</b>			
CA50			223.9
CA60			3.5

VOLUME DE CONCRETO (C-30) = 8.52 m³

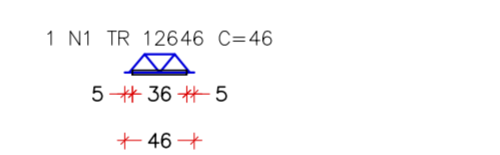
RELAÇÃO DO AÇO

ELEMENTO	AÇO	N	DIAM (mm)	QUANT	C.UNIT (cm)	C.TOTAL (cm)
VT201a	CA60	1	TR 12646	1	46	46
6xVT202a	CA60	1	TR 12646	6	196	1176
VT202b	CA60	1	TR 12646	1	153	153
11xVT203a	CA60	1	TR 12646	11	196	2156
9xVT204a	CA60	1	TR 12646	9	196	1764
7xVT205a	CA60	1	TR 12646	7	196	1372
7xVT206a	CA60	1	TR 12646	7	366	2562
11xVT207a	CA60	1	TR 12646	11	366	4026
9xVT208a	CA60	1	TR 12646	9	366	3294
7xVT209a	CA60	1	TR 12646	7	366	2562
19xVT210a	CA60	1	TR 12646	19	426	8094
17xVT211a	CA60	1	TR 12646	17	426	7242

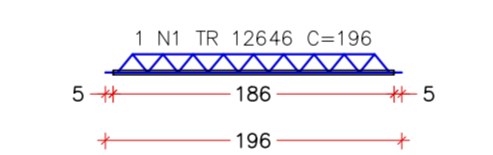
RESUMO DO AÇO

AÇO	DIAM (mm)	C.TOTAL (m)	PESO + 10% (kg)
CA60TR	12646	344.5	385.4
<b>PESO TOTAL (kg)</b>			
CA60			385.4

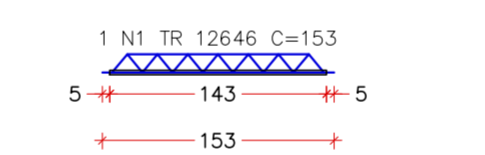
VT201a (1 unidades)  
(L201)  
ESC 1:50



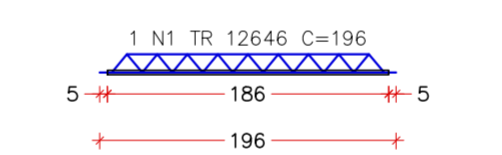
VT202a (6 unidades)  
(L202)  
ESC 1:50



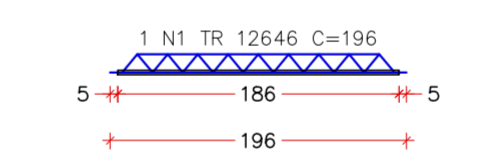
VT202b (1 unidades)  
(L202)  
ESC 1:50



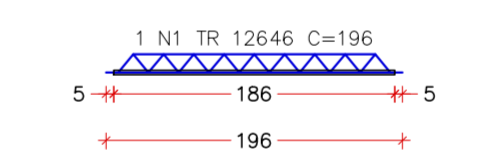
VT203a (11 unidades)  
(L203)  
ESC 1:50



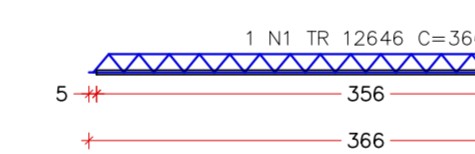
VT204a (9 unidades)  
(L204)  
ESC 1:50



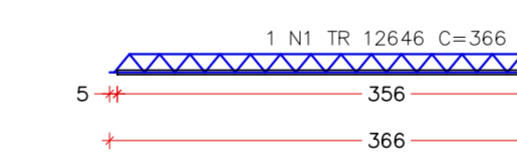
VT205a (7 unidades)  
(L205)  
ESC 1:50



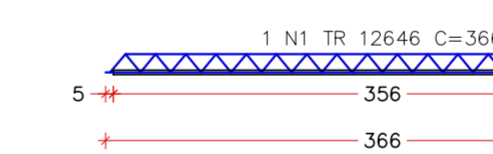
VT206a (7 unidades)  
(L206)  
ESC 1:50



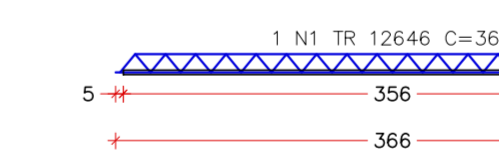
VT207a (11 unidades)  
(L207)  
ESC 1:50



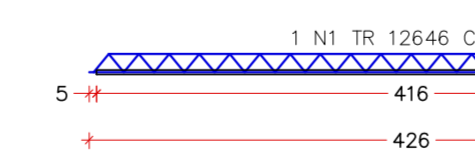
VT208a (9 unidades)  
(L208)  
ESC 1:50



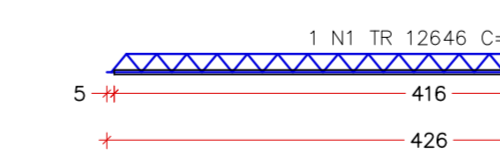
VT209a (7 unidades)  
(L209)  
ESC 1:50



VT210a (19 unidades)  
(L210)  
ESC 1:50



VT211a (17 unidades)  
(L211)  
ESC 1:50




REV. 00 | 18/06/24 | EMISSÃO INICIAL | DAC

REVISÃO DATA : | DESCRIÇÃO: | RESP.:

CLIENTE



PROJETO

Rua Cel. Joaquim Francisco, 341, Bairro Varginha  
CEP: 37501-052 – Itajubá / MG  
Tel: (35) 3623-8846  
www.dacengenharia.com.br

COORDENAÇÃO  
ALOSIO CAETANO FERREIRA

RESPONSÁVEL TÉCNICO E AUTOR

ENG.º FLÁVIA C. BARBOSA MG-187.842/D

EMPRESAMENTO

**CONSTRUÇÃO DO REFEITÓRIO DA E.M. VASCONCELOS COSTA**

ENDEREÇO  
RUA VENERANDO SCODELER, BELLA ITÁLIA  
POUSO ALEGRE – MINAS GERAIS

DISCIPLINA  
ESTRUTURAL

FASE DO PROJETO  
EXECUTIVO

ASSUNTO  
PROJETO ESTRUTURAL EM CONCRETO ARMADO  
REFEITÓRIO  
DETALHAMENTO DAS LAJES DA COBERTURA

FOLHA Nº  
10/13

DATA INICIAL  
18/06/2024

ESCALA  
INDICADA

REVISÃO  
ROO

ARQUIVO  
DAC-PMPA-RVAS-PE-EST-ROO.DWG