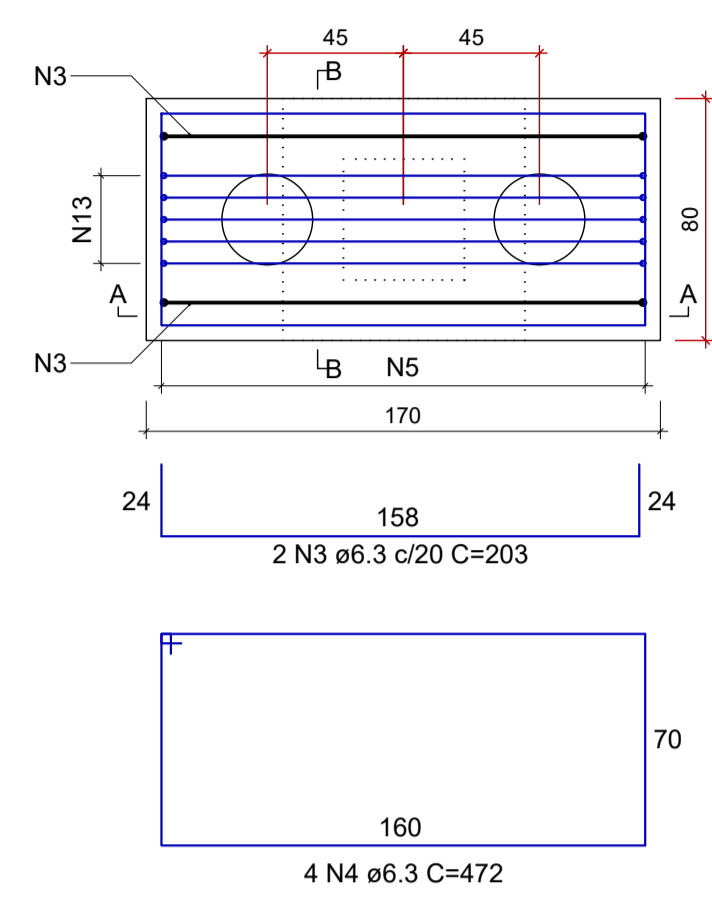


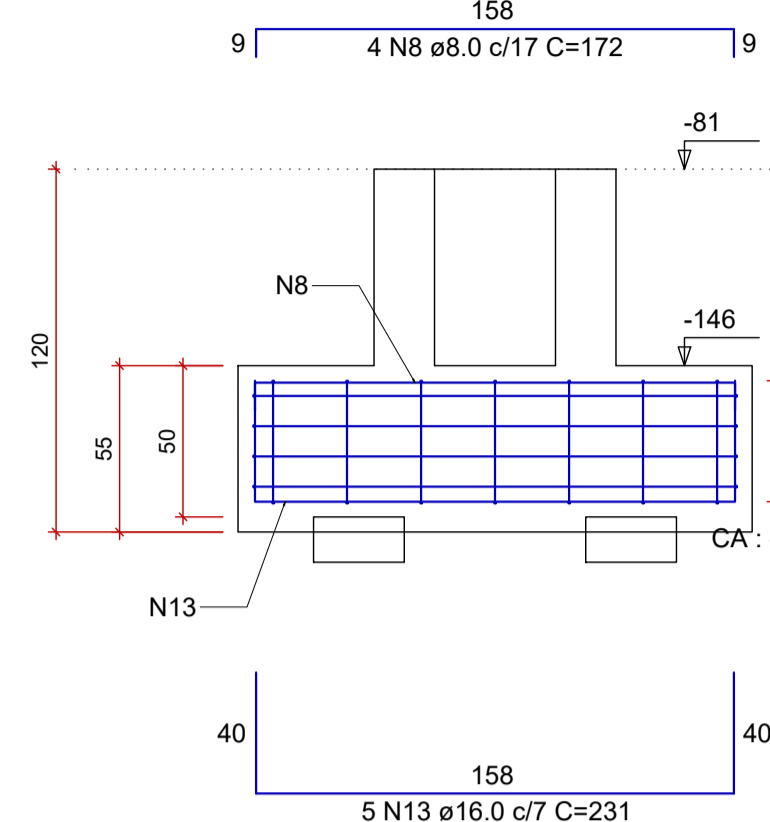
PROJETO ESTRUTURAL - CONSTRUÇÃO DA UNIDADE DE PRONTO ATENDIMENTO  
ESCALA INDICADA

BM37=BM49=BM98  
2x30

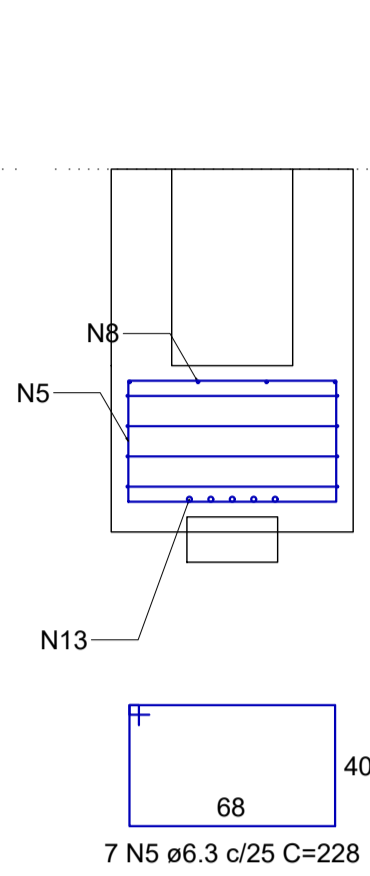
PLANTA  
ESCALA 1:25



CORTE A-A  
ESCALA 1:25

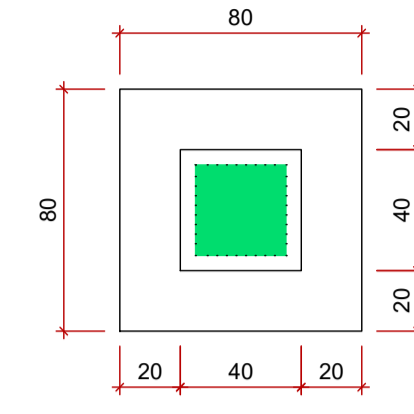
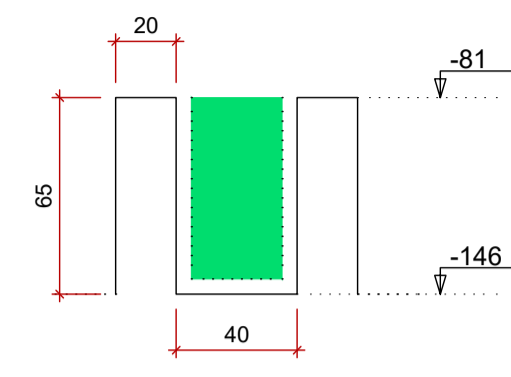


CORTE B-B  
ESCALA 1:25

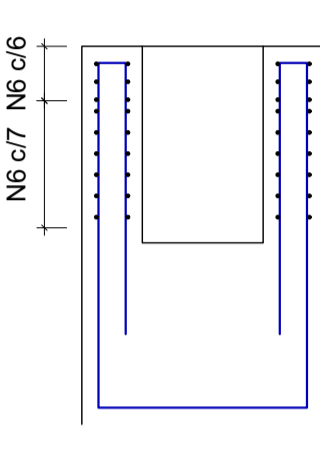


Cálice PM84  
ESC 1:25

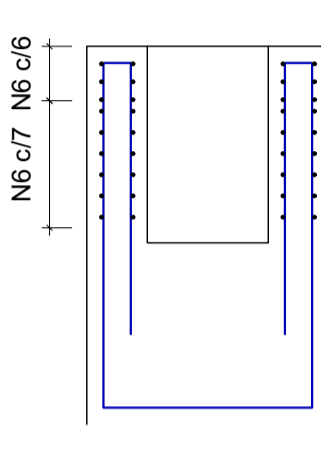
ESC 1:25



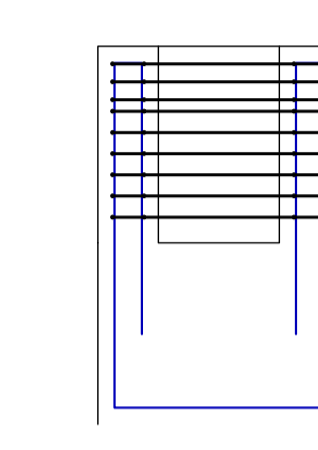
CORTE A-A



CORTE B-B



CORTE C-C



RELAÇÃO DO AÇO

6x30  
Cálice PM84

BM84

3x30

ACO	N	DIAM (mm)	QUANT	C.UNIT (cm)	C.TOTAL (cm)
CA50	1	6.3	14	263	3682
	2	6.3	70	248	17360
	3	6.3	6	203	1218
	4	6.3	12	472	5664
	5	6.3	21	228	4788
	6	6.3	36	172	6192
	7	8.0	35	592	20720
	8	8.0	12	172	2064
	9	8.0	6	484	2904
	10	10.0	24	237	5688
	11	12.5	4	960	3840
	12	16.0	56	311	17416
	13	16.0	15	231	3465

RESUMO DO AÇO

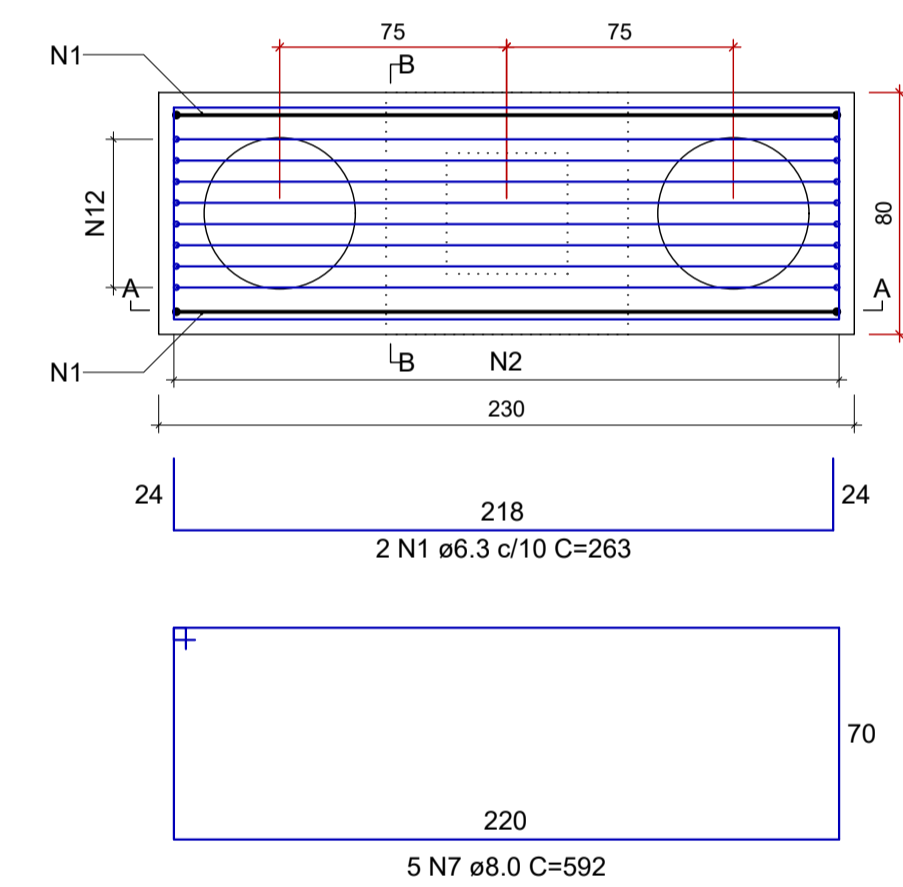
ACO	DIAM (mm)	C.TOTAL (m)	PESO + 10% (kg)
CA50	6.3	389	104.7
	8.0	256.9	111.5
	10.0	56.9	38.6
	12.5	9.6	10.2
	16.0	208.8	362.5

PESO TOTAL (kg)  
CA50 627.5

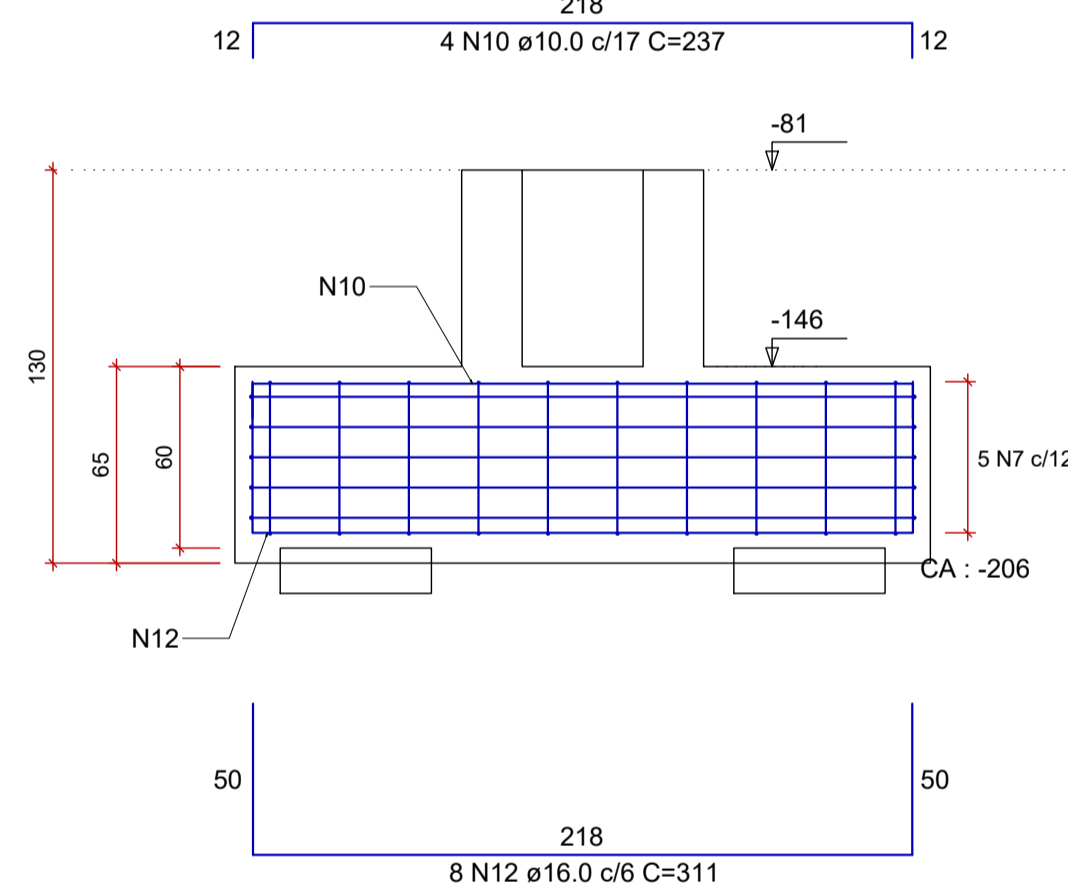
Volume de concreto (C-25) = 13.58 m³  
Área de forma = 72.86 m²

BM33=BM34=BM39=BM40=BM43=BM44  
2x50

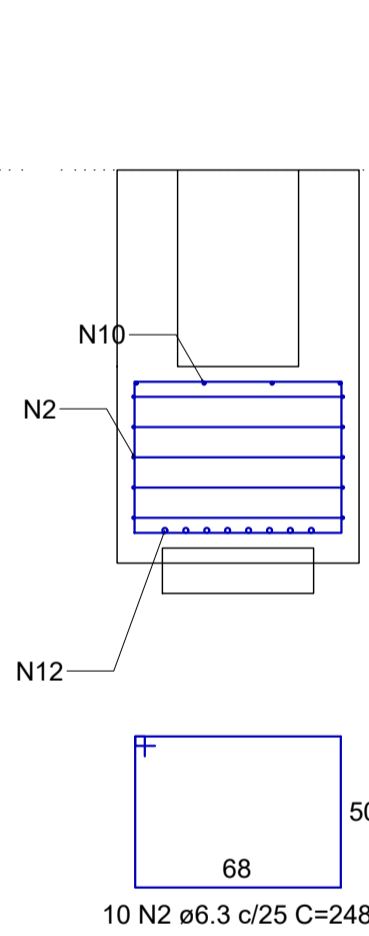
PLANTA  
ESCALA 1:25



CORTE A-A  
ESCALA 1:25

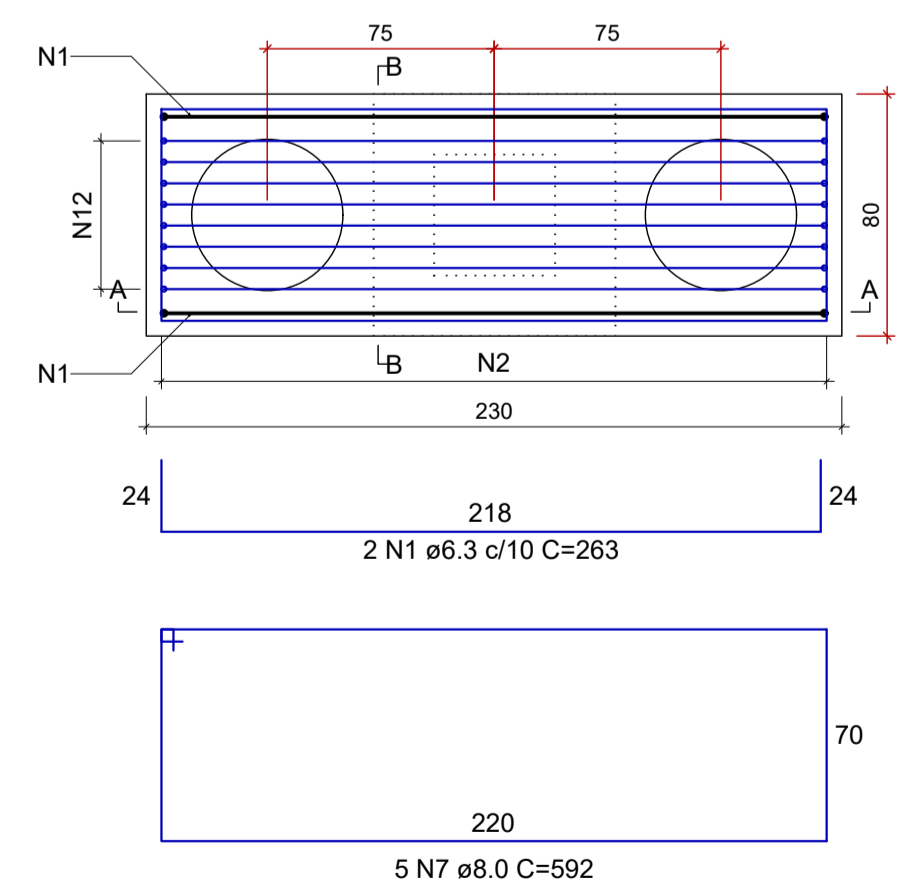


CORTE B-B  
ESCALA 1:25

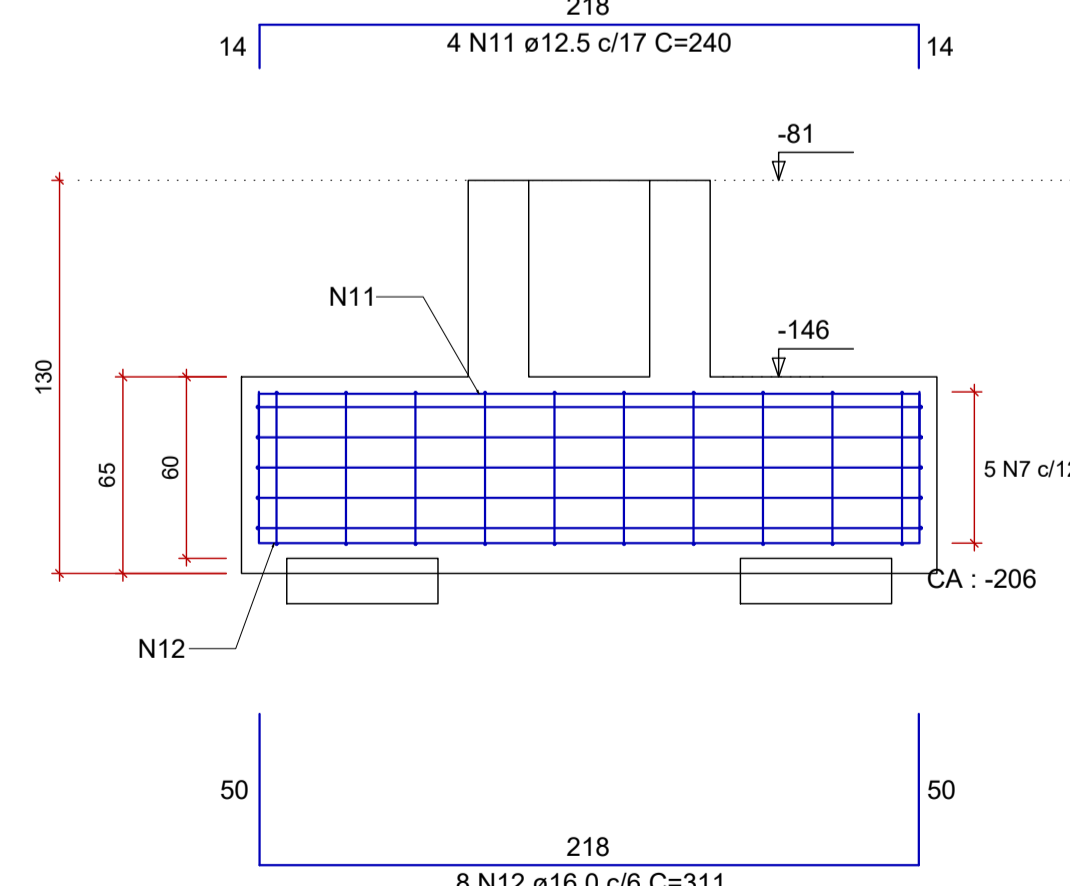


BM84  
2x50

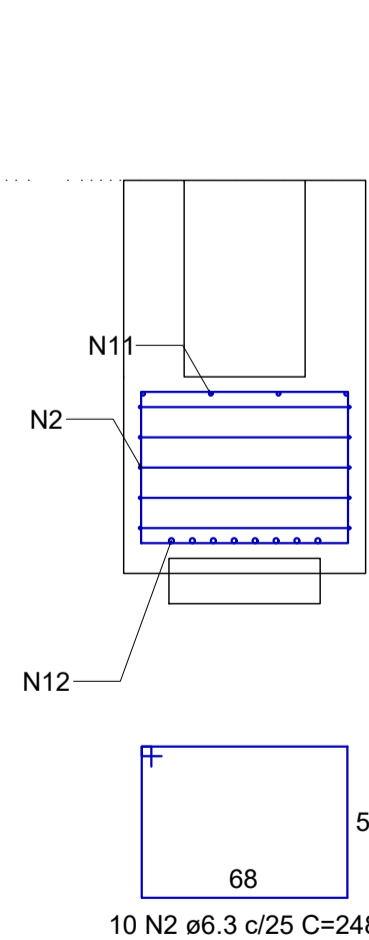
PLANTA  
ESCALA 1:25



CORTE A-A  
ESCALA 1:25



CORTE B-B  
ESCALA 1:25



REV.	DATA	DESCRIÇÃO	RESP.
REV. 02	07/07/23	CONFORME SOLICITAÇÕES DA VIGILANCIA SANITÁRIA	DAC
REV. 01	28/04/23	CONFORME SOLICITAÇÕES DA VIGILANCIA SANITÁRIA	DAC
REV. 00	31/01/23	EMISSÃO INICIAL	DAC
REVISÃO:	DATA:	DESCRIÇÃO:	RESP.:

CLIENTE

Prefeitura Municipal de Pouso Alegre

PROJETO

DAC Engenharia  
Rua Miguel Vianna, nº 81, 2º Andar  
Bairro Morro Chic  
CEP: 37500-080 - Itajubá / MG  
Tel: (35) 3623-8846  
www.dacengenharia.com.br

COORDENAÇÃO  
ALOÍSIO CAETANO FERREIRA

RESPONSÁVEL TÉCNICO E AUTOR  
ENG. CIVIL FLÁVIA BARBOSA CREA-MG-187.842/D

EMPREENDIMENTO

CONSTRUÇÃO DA UNIDADE DE PRONTO ATENDIMENTO

ENDEREÇO  
RUA PIRANGUINHO, B. SÃO JOÃO  
POUSO ALEGRE - MINAS GERAIS

DISCIPLINA  
ESTRUTURAL

FASE DO PROJETO  
EXECUTIVO

ASSUNTO  
PROJETO ESTRUTURAL  
DETALHAMENTO DOS BLOCOS DE COROAMENTO E CÁLICES  
LISTA DE MATERIAIS

FOLHA Nº  
09/72

DATA INICIAL	ESCALA	REVISÃO	ARQUIVO
31/01/2023	INDICADA	R01	DAC-PMPA-UPA-PE-EST-R02.DWG