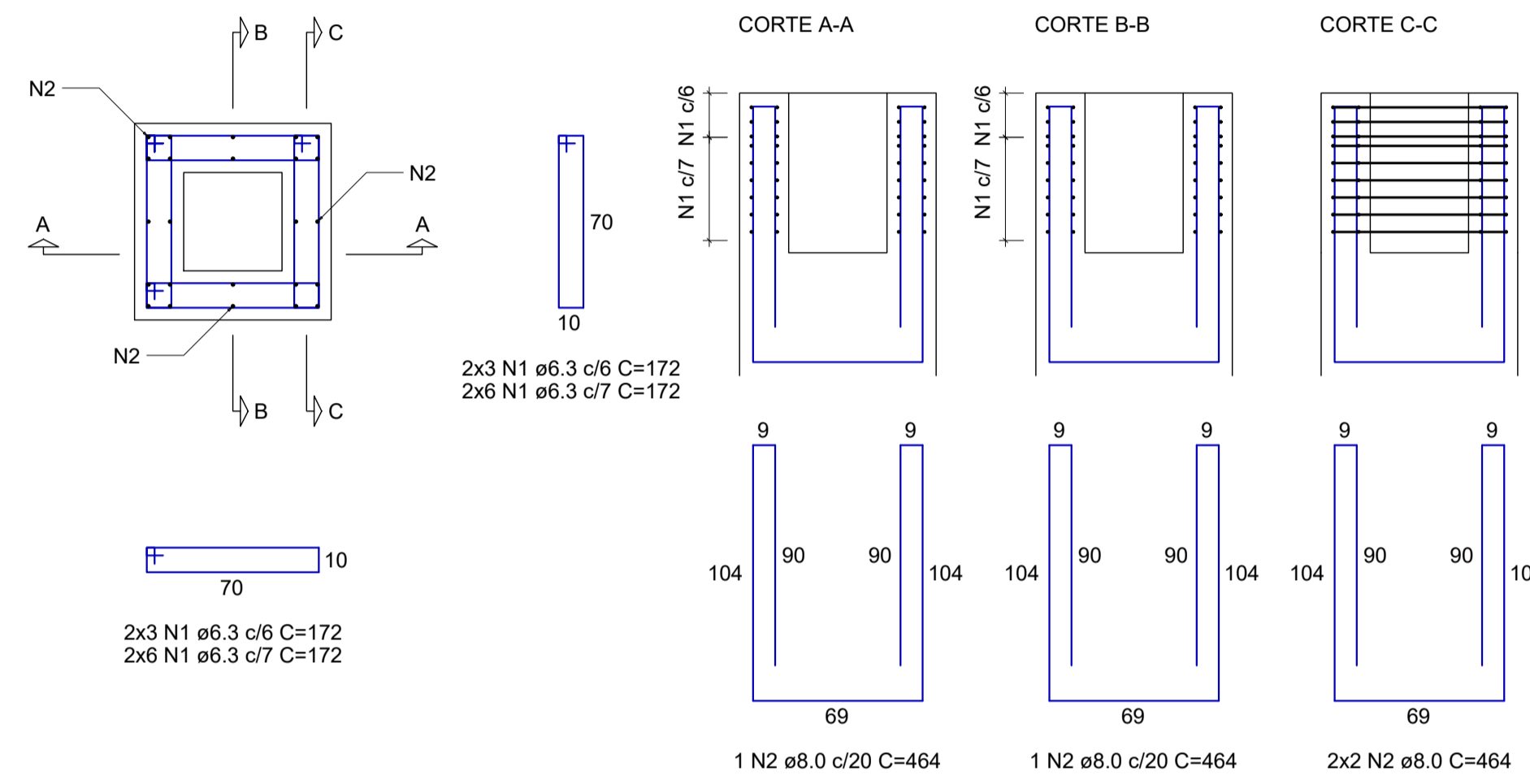
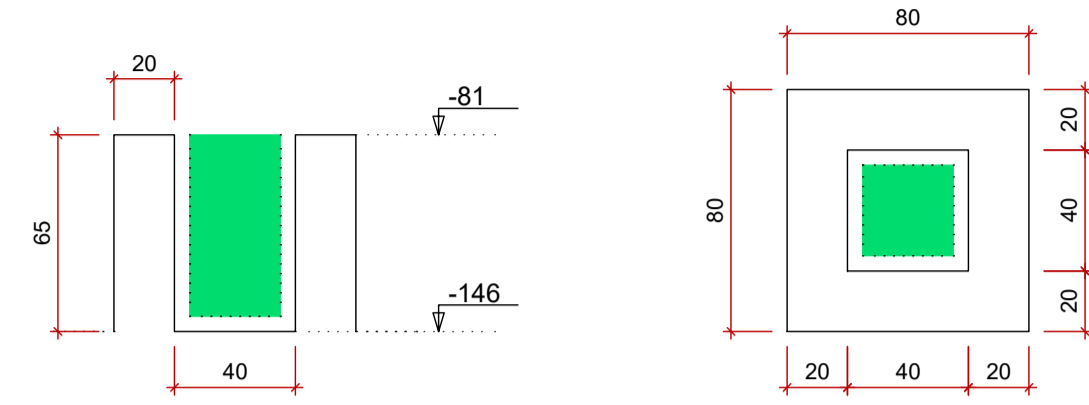
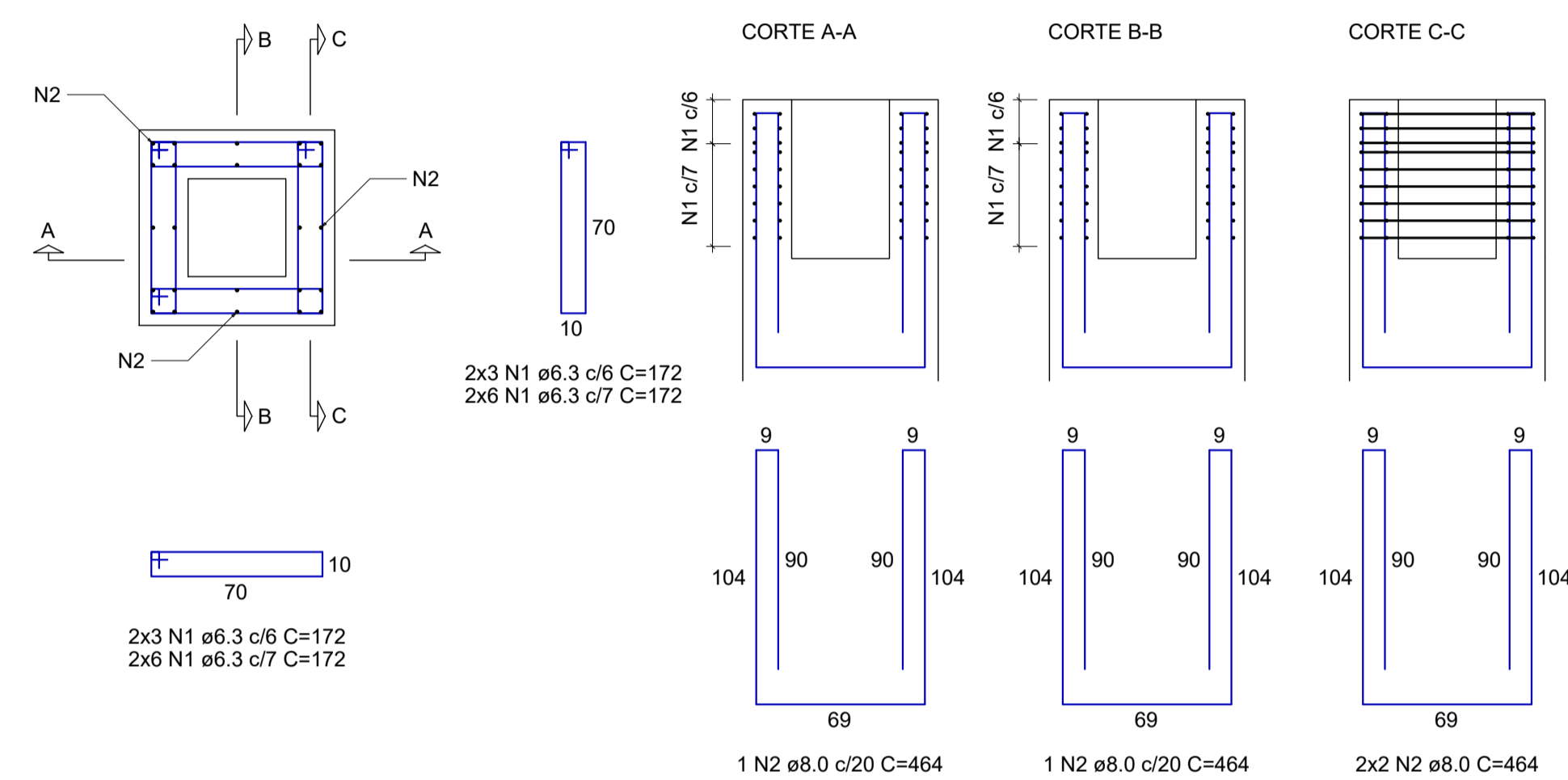
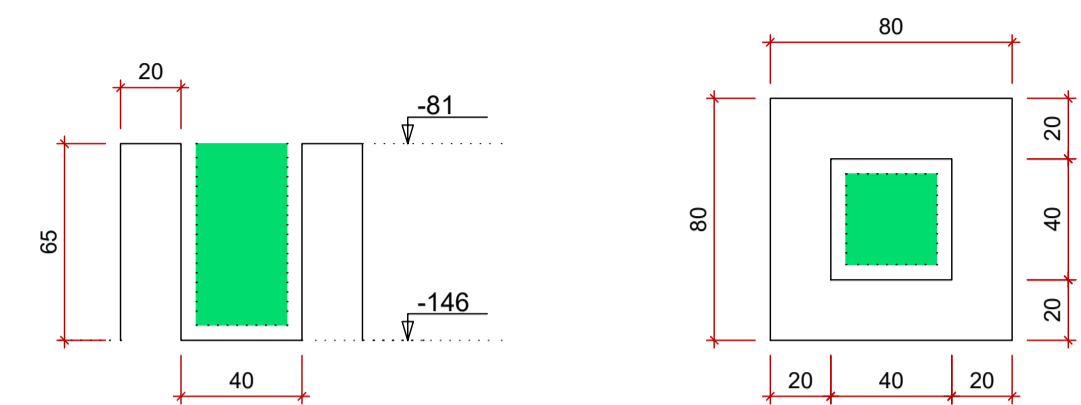


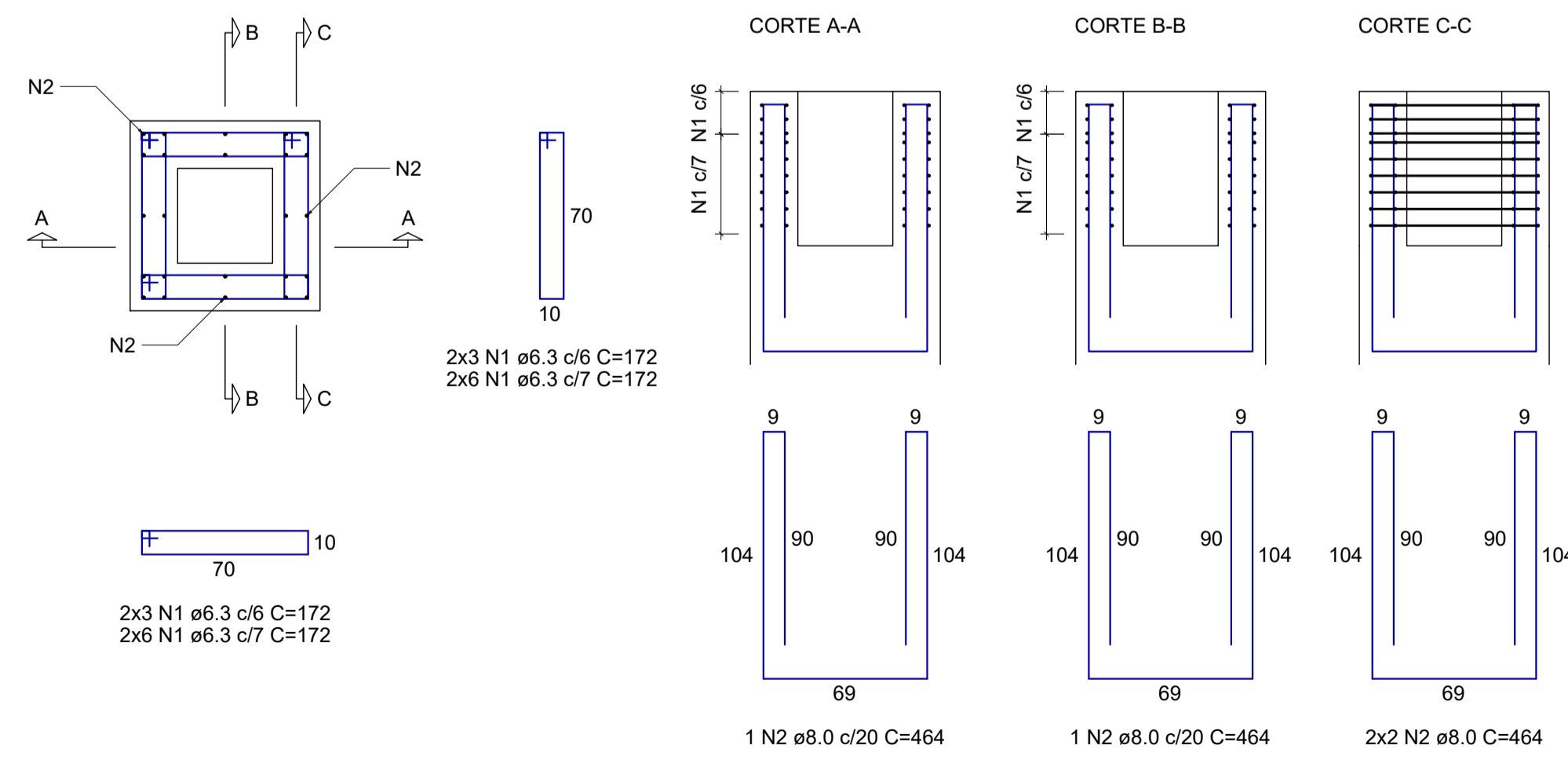
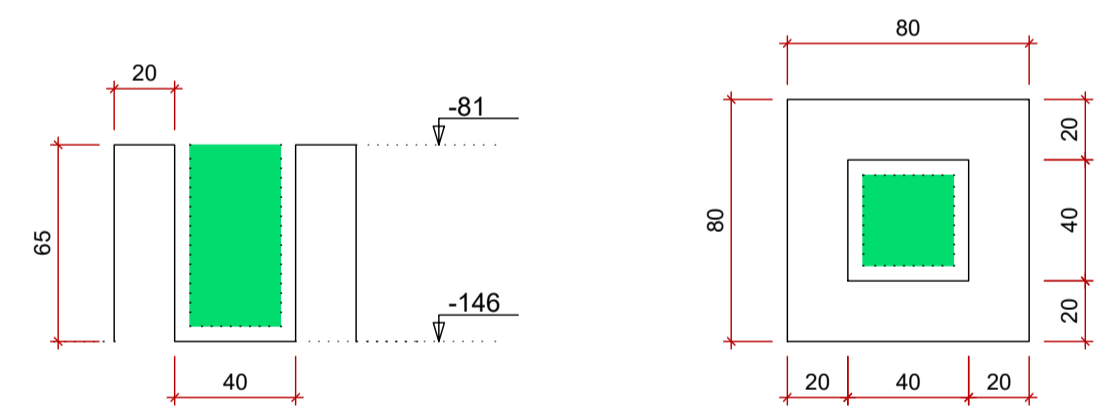
Cálice PM1
ESC 1:25



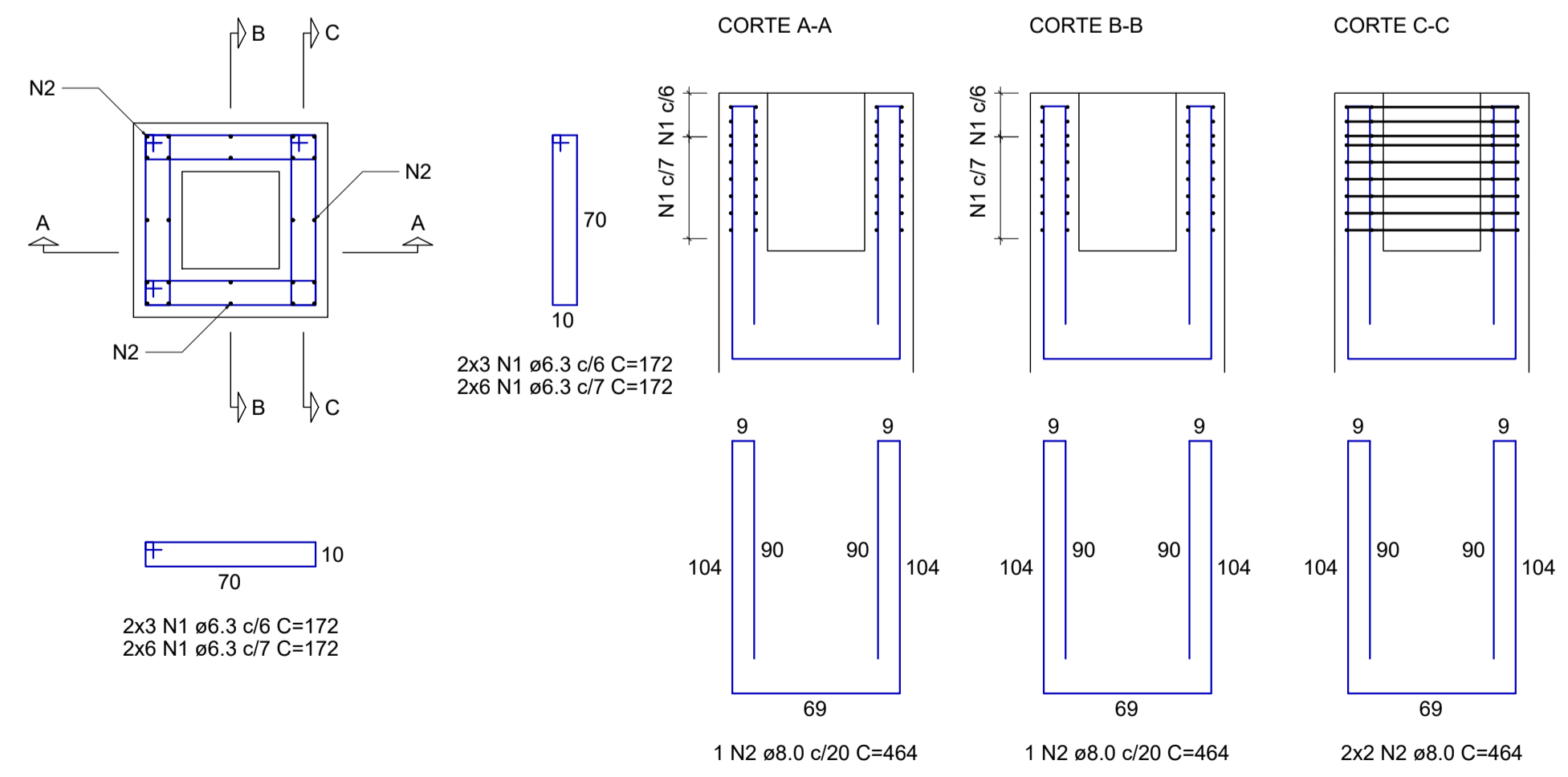
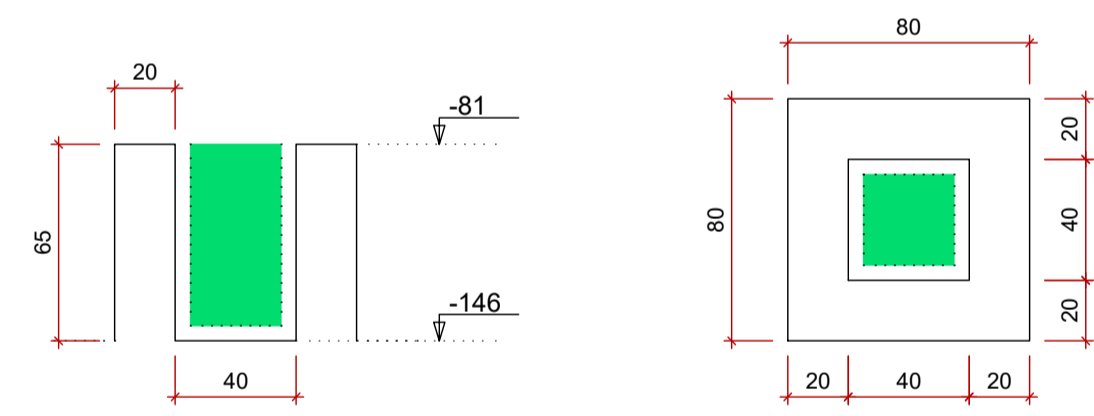
Cálice (=PM114==PM105=PM106=PM108=PM110=PM112=PM113=
=PM76=PM77=PM78=PM88=PM89=PM90=PM91=PM99=
=PM35=PM45=PM53=PM56=PM58=PM59=PM63=PM73=
=PM2=PM3=PM6=PM10=PM13=PM14=PM25=PM31)
ESC 1:25



Cálice (=PM95=PM96=PM97=PM102=PM103=PM107=PM109=
=PM61=PM64=PM65=PM68=PM69=PM71=PM72=PM94=
=PM47=PM48=PM50=PM51=PM54=PM55=PM57=PM60=
=PM23=PM24=PM28=PM29=PM30=PM32=PM41=PM42=
=PM4=PM7=PM8=PM16=PM17=PM18=PM21=PM22)
ESC 1:25



Cálice (=PM92=PM5=PM11=PM15=PM19=PM62=PM75=PM79=PM80)
ESC 1:25



RELAÇÃO DO AÇO

Cálice PM1 9xCálice PM92 39xCálice PM109
31xCálice PM114

AÇO	N	DIAM (mm)	QUANT	C.UNIT (cm)	C.TOTAL (cm)
CA50	1	6.3	2880	172	495360
	2	8.0	480	464	222720

RESUMO DO AÇO

AÇO	DIAM (mm)	C.TOTAL (m)	PESO + 10% (kg)
CA50	6.3	4953.6	1333.4
	8.0	2227.2	966.7
PESO TOTAL (kg)			
CA50	2300.1		

REV. 02	07/07/23	CONFORME SOLICITAÇÕES DA VIGILANCIA SANITÁRIA	DAC
REV. 01	28/04/23	CONFORME SOLICITAÇÕES DA VIGILANCIA SANITÁRIA	DAC
REV. 00	31/01/23	EMISSÃO INICIAL	DAC
REVISÃO:	DATA:	DESCRIÇÃO:	RESP.:

CLIENTE



Prefeitura Municipal de Pouso Alegre

PROJETO	COORDENAÇÃO
 Rua Miguel Vianna, nº 51, 2º Andar Bairro Morro Chic CEP: 37500-080 - Itajubá / MG Tel: (35) 3623-8846 www.dacengenharia.com.br	ALOÍSIO CAETANO FERREIRA
	RESPONSÁVEL TÉCNICO E AUTOR
	ENG. CIVIL FLÁVIA BARBOSA CREA-MG-187.842/D

EMPREENDIMENTO

CONSTRUÇÃO DA UNIDADE DE PRONTO ATENDIMENTO

ENDEREÇO	DISCIPLINA
RUA PIRANGUINHO, B. SÃO JOÃO POUSO ALEGRE - MINAS GERAIS	ESTRUTURAL
ASSUNTO	FASE DO PROJETO
PROJETO ESTRUTURAL DETALHAMENTO DOS BLOCOS DE COROAMENTO E CÁLICES LISTA DE MATERIAIS	EXECUTIVO
	FOLHA Nº
	10/72

DATA INICIAL	ESCALA	REVISÃO	ARQUIVO
31/01/2023	INDICADA	R01	DAC-PMPA-UPA-PE-EST-R02.DWG