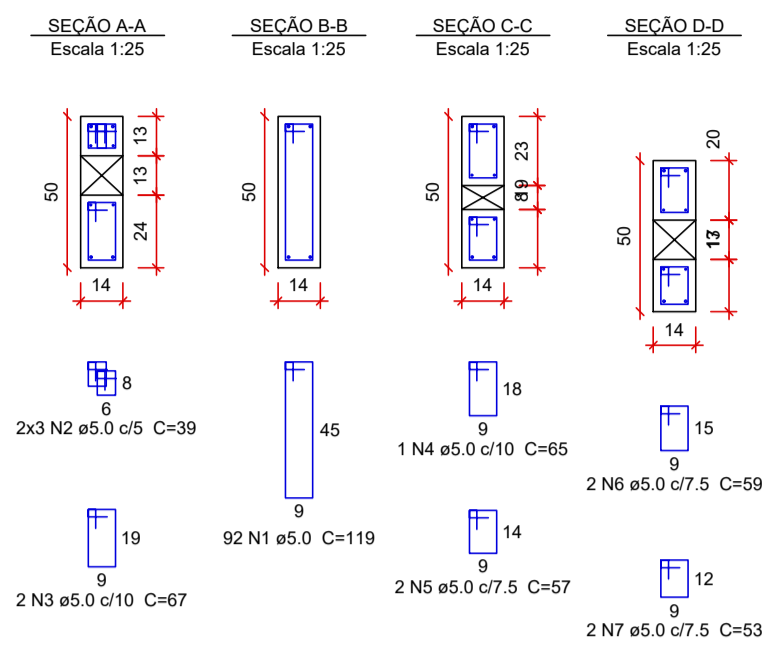
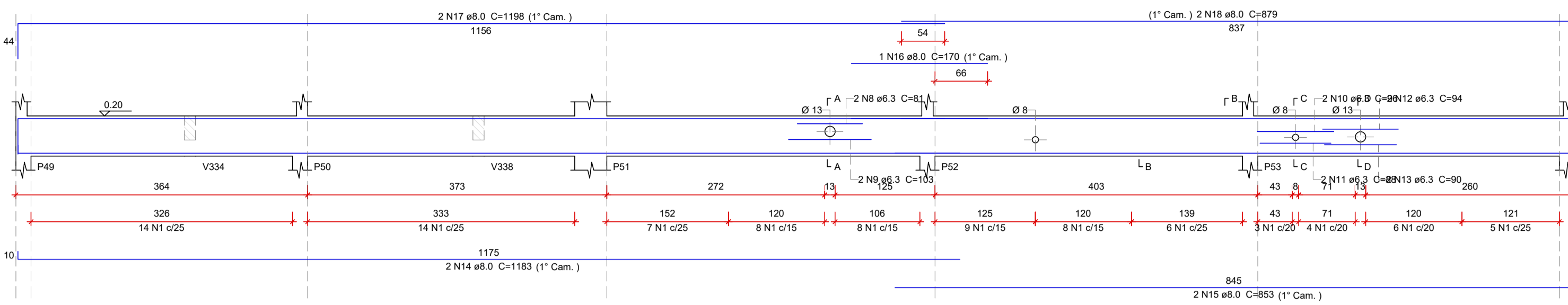
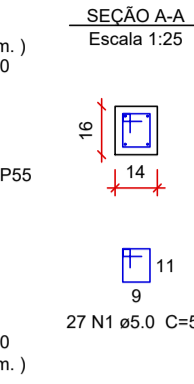
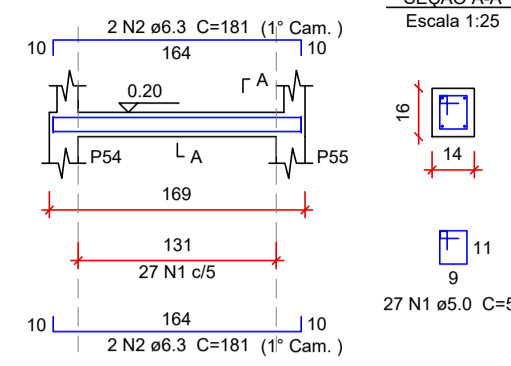


PROJETO ESTRUTURAL - CONSTRUÇÃO DA UBS CRISTAIS  
ESCALA INDICADA

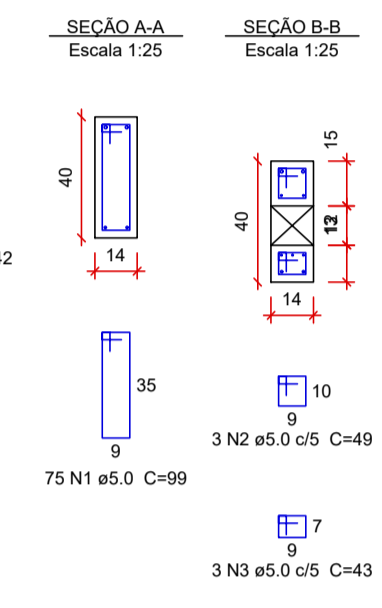
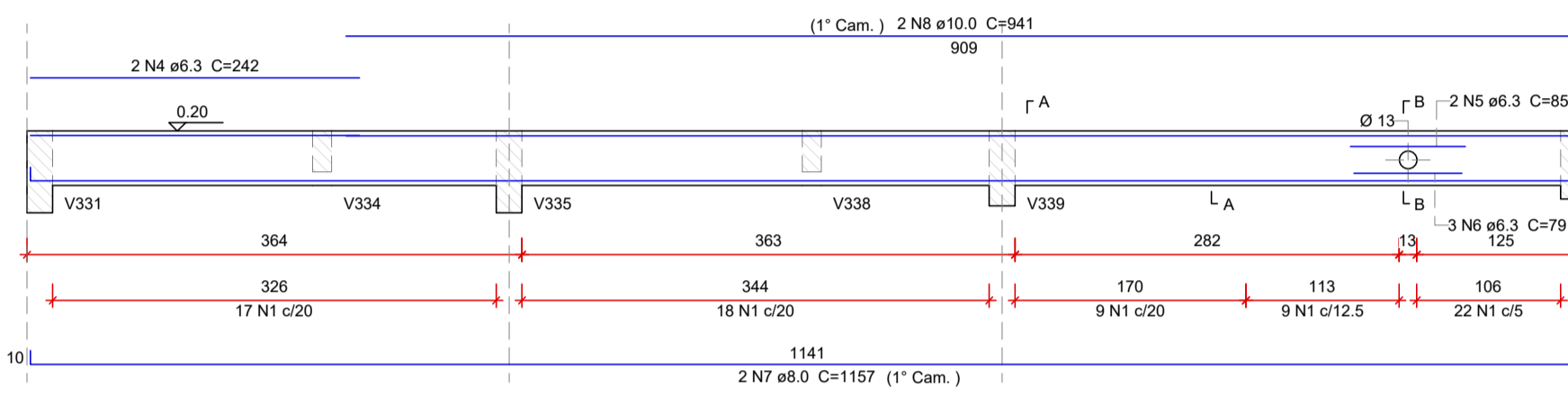
V323  
Escala 1:50



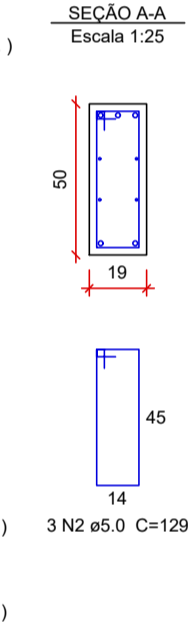
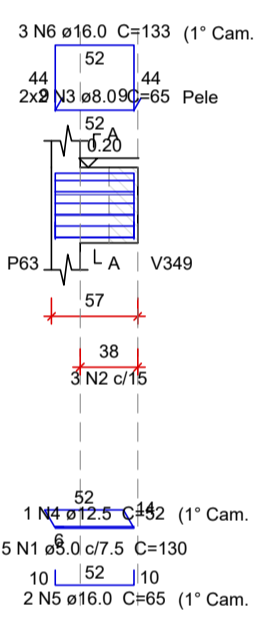
V324  
Escala 1:50



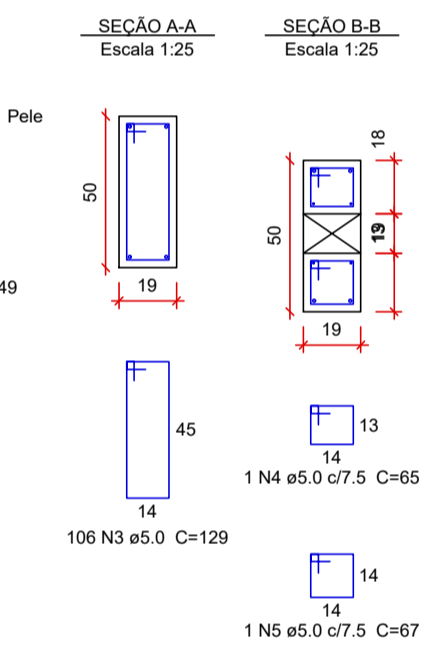
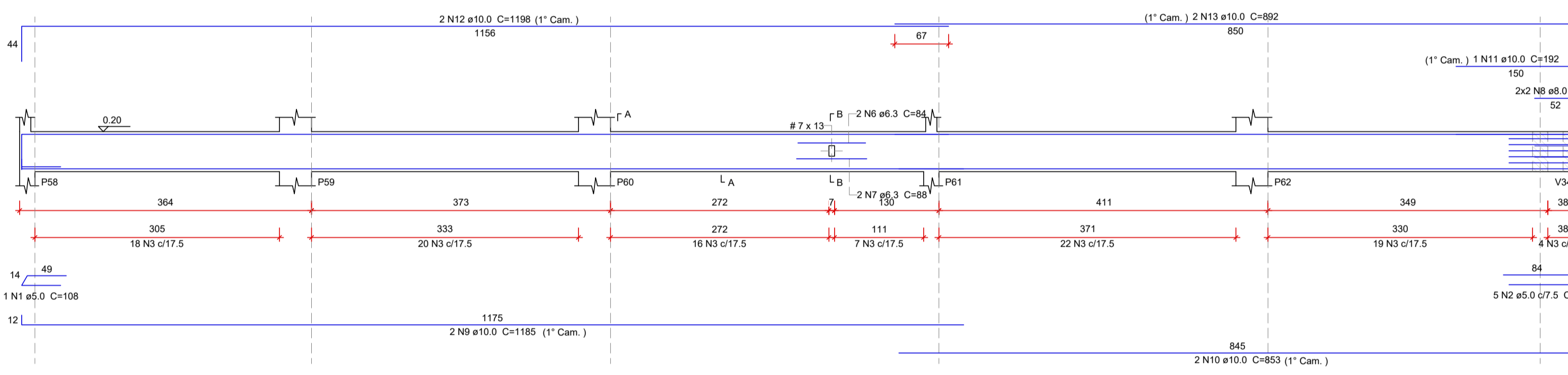
V325  
Escala 1:50



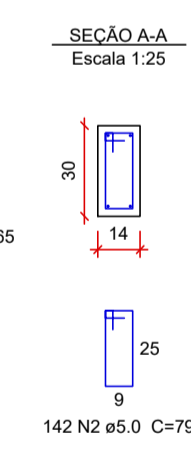
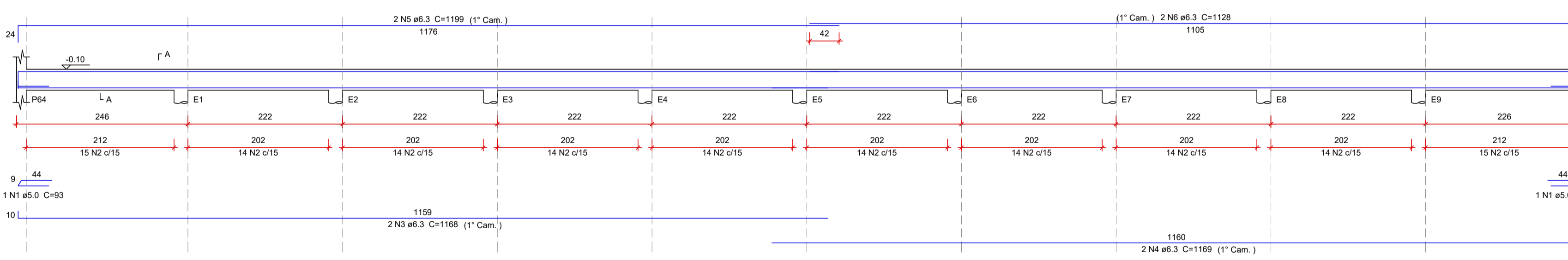
V327  
Escala 1:50



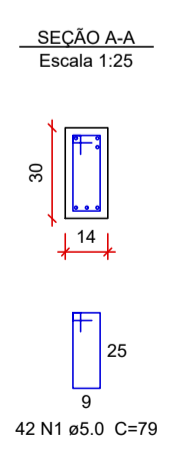
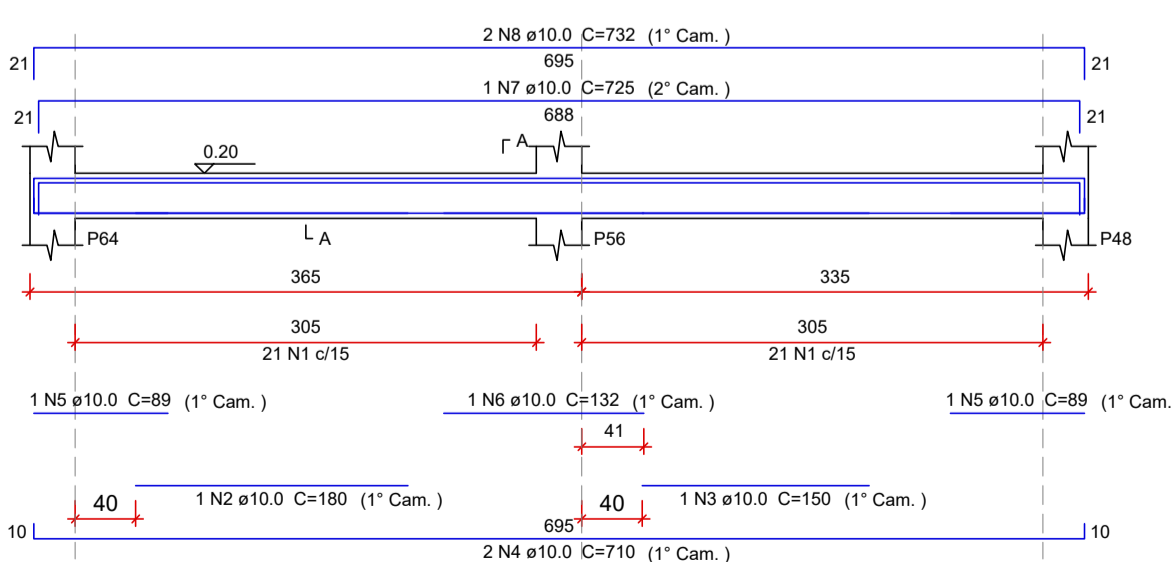
V326  
Escala 1:50



V328  
Escala 1:50



V329  
Escala 1:50



RELAÇÃO DO AÇO

| ELEMENTO | AÇO  | N    | DIAM (mm) | QUANT | C.UNIT (cm) | C.TOTAL (cm) |
|----------|------|------|-----------|-------|-------------|--------------|
| V323     | CA60 | 1    | 5.0       | 92    | 119         | 10948        |
|          | CA60 | 2    | 5.0       | 6     | 39          | 234          |
|          | CA60 | 3    | 5.0       | 2     | 67          | 134          |
|          | CA60 | 4    | 5.0       | 1     | 65          | 65           |
|          | CA60 | 5    | 5.0       | 2     | 57          | 114          |
|          | CA60 | 6    | 5.0       | 2     | 59          | 118          |
|          | CA60 | 7    | 5.0       | 2     | 61          | 122          |
|          | CA50 | 8    | 6.3       | 2     | 81          | 162          |
|          | CA50 | 9    | 6.3       | 2     | 103         | 206          |
|          | CA50 | 10   | 6.3       | 2     | 96          | 192          |
|          | CA50 | 11   | 6.3       | 2     | 88          | 176          |
|          | CA50 | 12   | 6.3       | 2     | 94          | 188          |
|          | CA50 | 13   | 6.3       | 2     | 90          | 180          |
|          | CA50 | 14   | 6.3       | 2     | 1183        | 2366         |
| V324     | CA50 | 15   | 8.0       | 2     | 853         | 1706         |
|          | CA50 | 16   | 8.0       | 1     | 170         | 340          |
|          | CA50 | 17   | 8.0       | 2     | 1198        | 2396         |
|          | CA50 | 18   | 8.0       | 2     | 879         | 1758         |
|          | CA60 | 1    | 5.0       | 27    | 51          | 1377         |
|          | CA60 | 2    | 5.0       | 4     | 181         | 724          |
|          | CA60 | 1    | 5.0       | 75    | 99          | 7425         |
|          | CA60 | 2    | 5.0       | 3     | 49          | 147          |
|          | CA60 | 3    | 5.0       | 3     | 43          | 129          |
|          | CA50 | 4    | 6.3       | 2     | 242         | 484          |
|          | CA50 | 5    | 6.3       | 2     | 85          | 170          |
|          | CA50 | 6    | 6.3       | 3     | 79          | 237          |
|          | CA50 | 7    | 6.3       | 2     | 1157        | 2314         |
|          | CA50 | 8    | 10.0      | 2     | 941         | 1882         |
| V325     | CA60 | 1    | 5.0       | 1     | 108         | 108          |
|          | CA60 | 2    | 5.0       | 5     | 178         | 890          |
|          | CA60 | 3    | 5.0       | 106   | 129         | 13674        |
|          | CA60 | 4    | 5.0       | 1     | 65          | 65           |
|          | CA60 | 5    | 5.0       | 1     | 67          | 67           |
|          | CA50 | 6    | 6.3       | 2     | 94          | 188          |
|          | CA50 | 7    | 6.3       | 2     | 88          | 176          |
|          | CA50 | 8    | 6.3       | 4     | 80          | 320          |
|          | CA50 | 9    | 10.0      | 2     | 1165        | 2330         |
|          | CA50 | 10   | 10.0      | 2     | 853         | 1706         |
|          | CA50 | 11   | 10.0      | 1     | 192         | 192          |
|          | CA50 | 12   | 10.0      | 2     | 1198        | 2396         |
|          | CA50 | 13   | 10.0      | 2     | 892         | 1784         |
|          | V326 | CA60 | 1         | 5.0   | 5           | 130          |
| CA60     |      | 2    | 5.0       | 3     | 129         | 387          |
| CA50     |      | 3    | 8.0       | 4     | 65          | 260          |
| CA60     |      | 4    | 12.5      | 1     | 52          | 52           |
| CA50     |      | 5    | 16.0      | 2     | 65          | 130          |
| CA50     |      | 6    | 16.0      | 3     | 133         | 399          |
| CA60     |      | 1    | 5.0       | 2     | 93          | 186          |
| CA60     |      | 2    | 5.0       | 142   | 79          | 11218        |
| CA50     |      | 3    | 6.3       | 2     | 1168        | 2336         |
| CA50     |      | 4    | 6.3       | 2     | 1169        | 2338         |
| CA50     |      | 5    | 6.3       | 2     | 1199        | 2398         |
| CA50     |      | 6    | 6.3       | 2     | 1128        | 2256         |
| CA60     |      | 1    | 5.0       | 42    | 79          | 3318         |
| CA50     |      | 2    | 10.0      | 1     | 180         | 180          |
| CA50     | 3    | 10.0 | 1         | 150   | 150         |              |
| CA50     | 4    | 10.0 | 2         | 710   | 1420        |              |
| CA50     | 5    | 10.0 | 2         | 89    | 178         |              |
| CA50     | 6    | 10.0 | 1         | 132   | 132         |              |
| CA50     | 7    | 10.0 | 1         | 725   | 725         |              |
| CA50     | 8    | 10.0 | 2         | 752   | 1464        |              |

RESUMO DO AÇO

| AÇO  | DIAM (mm) | C.TOTAL (m) | QUANT + 10 % (Barra) | PESO + 10 % (kg) |
|------|-----------|-------------|----------------------|------------------|
| CA50 | 6.3       | 124         | 12                   | 33.4             |
| CA50 | 8.0       | 112.1       | 11                   | 48.7             |
| CA50 | 10.0      | 145.8       | 14                   | 98.9             |
| CA50 | 12.5      | 0.6         | 1                    | 0.6              |
| CA50 | 16.0      | 5.3         | 4                    | 9.2              |
| CA60 | 5.0       | 513.6       | 48                   | 87.1             |

PESO TOTAL (kg)  
CA50 190.6  
CA60 87.1

VOLUME DE CONCRETO (C-30) = 4.84 m³  
ÁREA DE FORMA = 70.96 m²

|  |  |  |
|--|--|--|
| REV. 01   08/11/24   ALTERAÇÕES CONFORME VIGILÂNCIA SANITÁRIA  |  | DAC  |
| REV. 00   20/05/24   EMISSÃO INICIAL   |  | DAC  |
| REVISÃO   DATA:  | DESCRIÇÃO:   | RESP.:   |
| <p>Prefeitura Municipal de Pouso Alegre</p>  |  |  |
| <p>DAC Engenharia</p> <p>Rua Cel. Joaquim Francisco, 341, Bairro Varginha<br/>CEP: 37501-052 - Itajubá / MG<br/>Tel: (35) 2143 - 9087<br/>www.dacengenharia.com.br</p> | <p>COORDENAÇÃO</p> <p>RAFAEL BARBOSA CARREIRA CAU: 00A155411-5<br/>RESPONSÁVEL TÉCNICO E AUTOR</p> <p>ALOISIO CAETANO FERREIRA CREA: MG-97.132/D</p> |  |
| <p>EMPREENDIMENTO</p> <p><b>CONSTRUÇÃO DA UBS CRISTAIS</b></p>   |  |  |
| <p>ENDEREÇO</p> <p>RUA ROBERTO SCODELER, S/N, BAIRRO BELLA ITÁLIA<br/>POUSO ALEGRE - MINAS GERAIS</p>  |  | <p>DISCIPLINA</p> <p><b>ESTRUTURAL</b></p>     |
| <p>ASSUNTO</p> <p>PROJETO ESTRUTURAL EM CONCRETO ARMADO<br/>DETALHAMENTO DAS VIGAS</p>   |  | <p>FASE DO PROJETO</p> <p><b>EXECUTIVO</b></p> |
|  |  | <p>FOLHA Nº</p> <p><b>20/34</b></p>            |
| DATA INICIAL   | ESCALA   | REVISÃO  |
| 20/05/2024   | INDICADA   | R01  |
| ARQUIVO  |  |  |
| DAC-PMPA-CRIS-PE-EST-R01.DWG   |  |  |