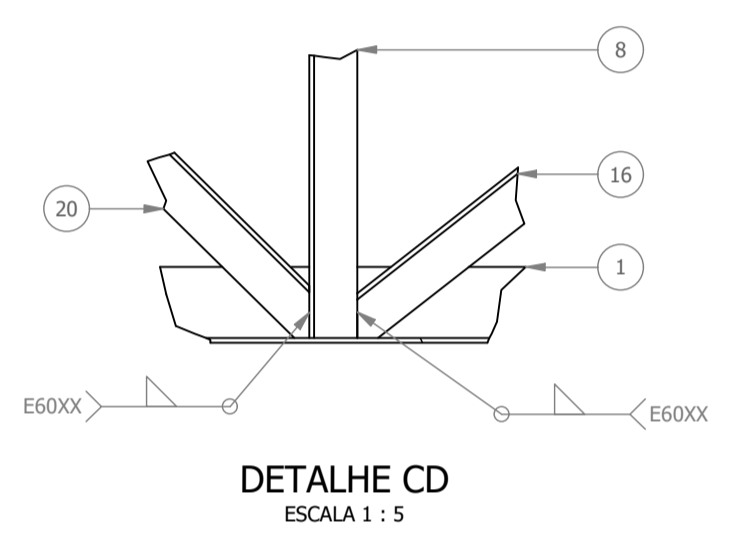
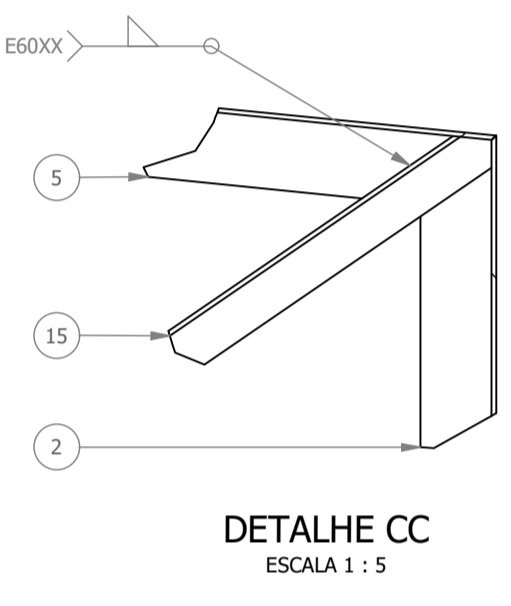
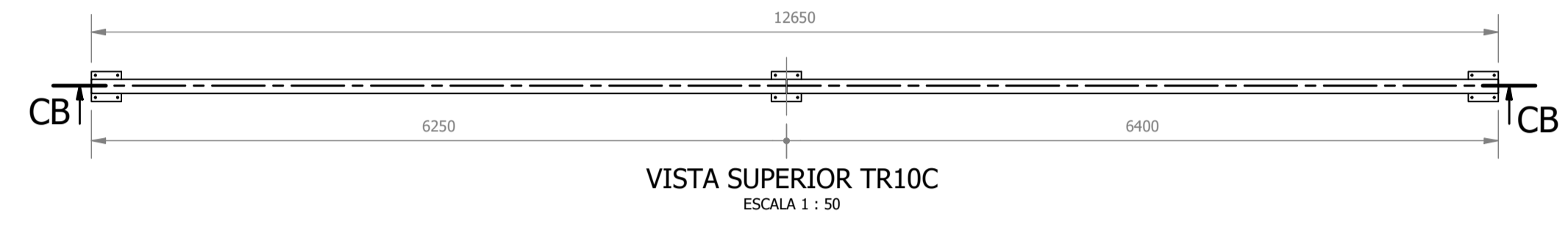
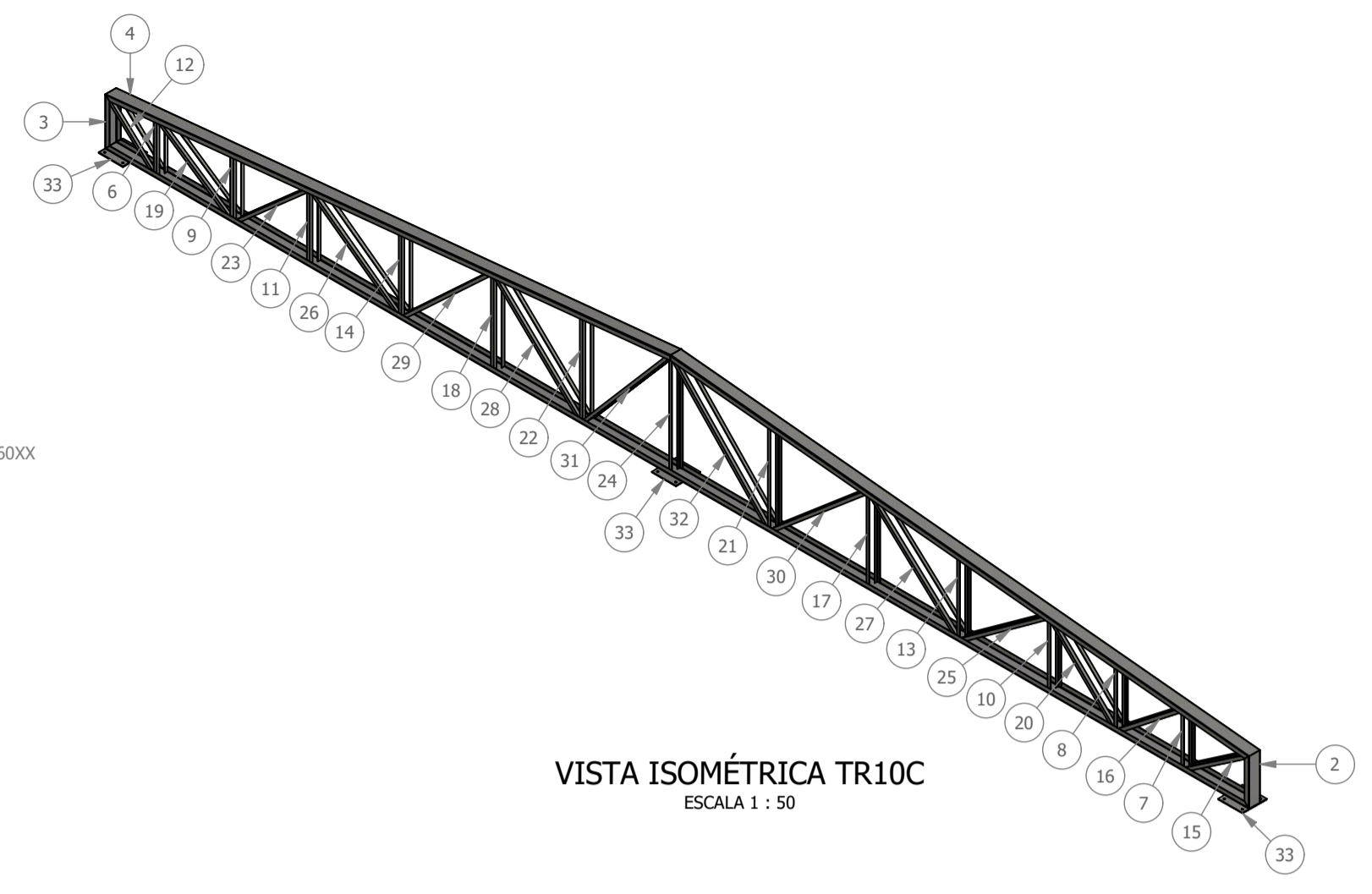
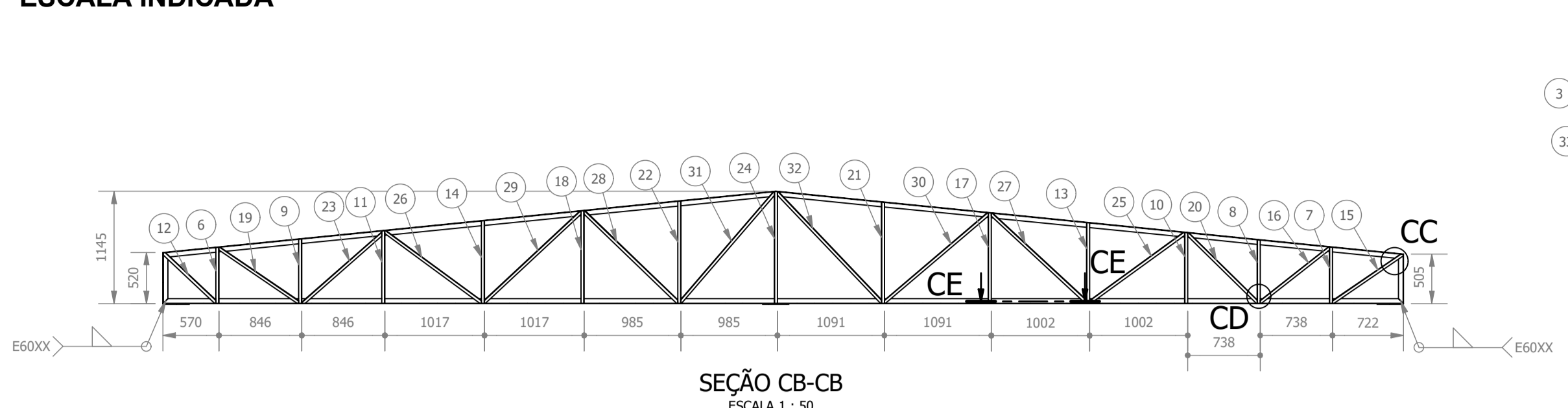
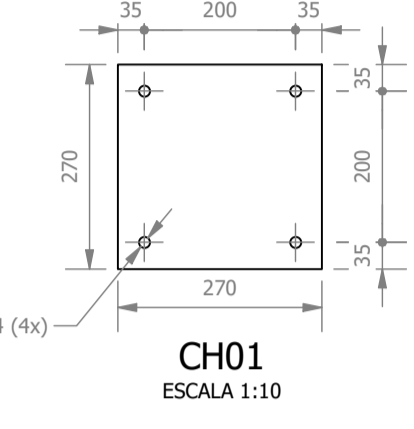
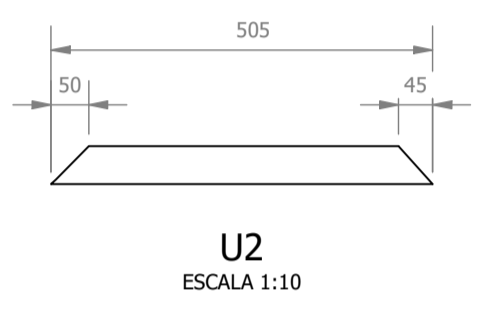
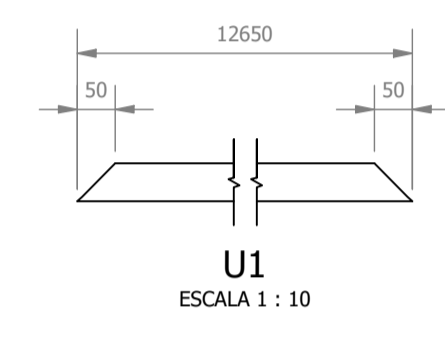


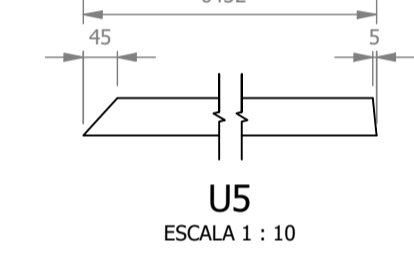
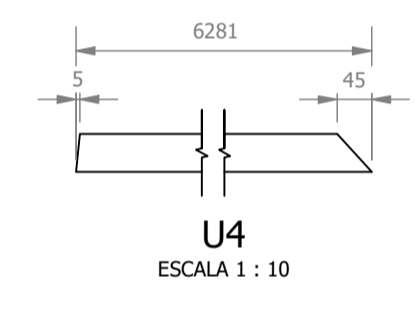
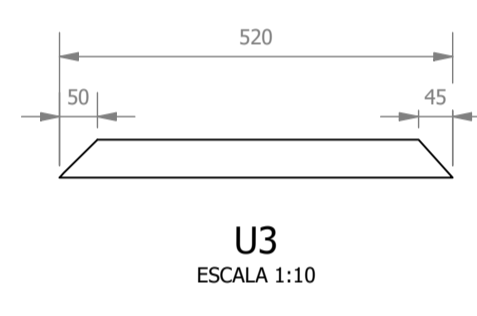
**PROJETO DE CONSTRUÇÃO DA UNIDADE DE PRONTO ATENDIMENTO
ESCALA INDICADA**



VISTA ISOMÉTRICA TR10C
ESCALA 1:50

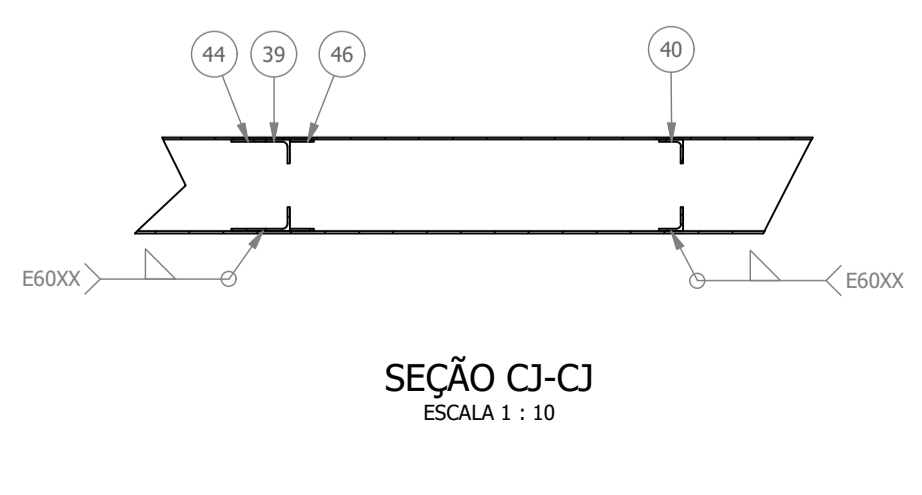
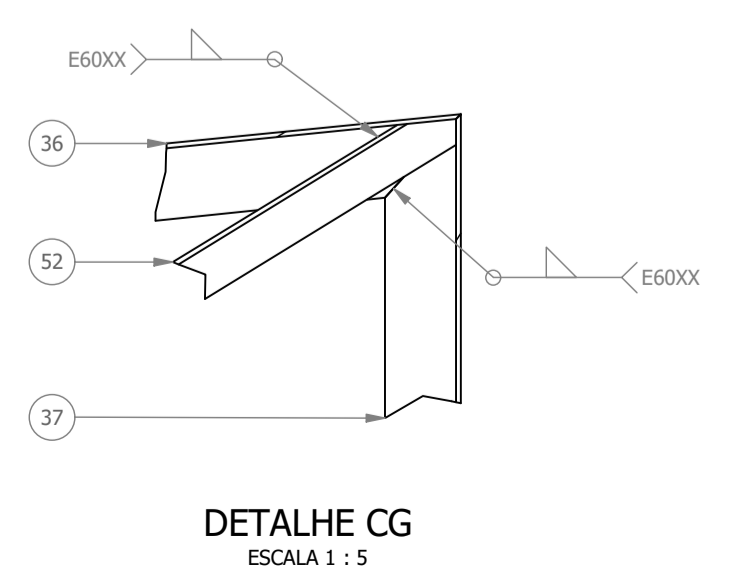
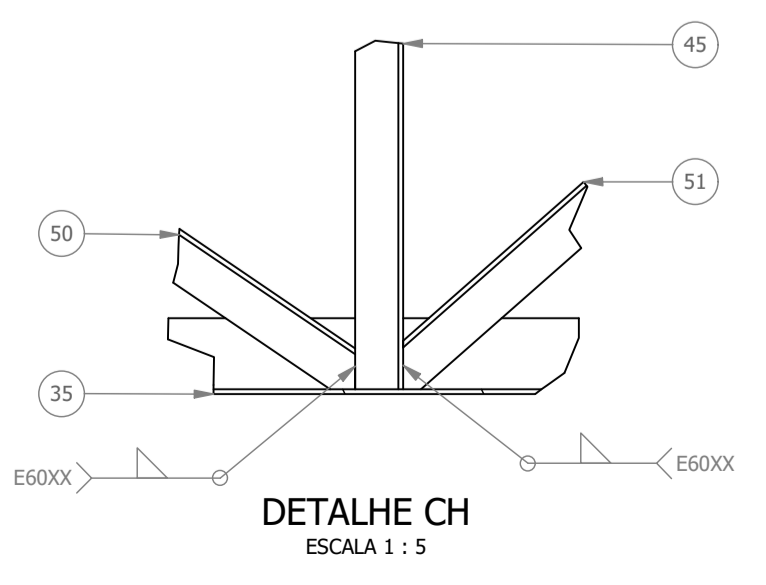
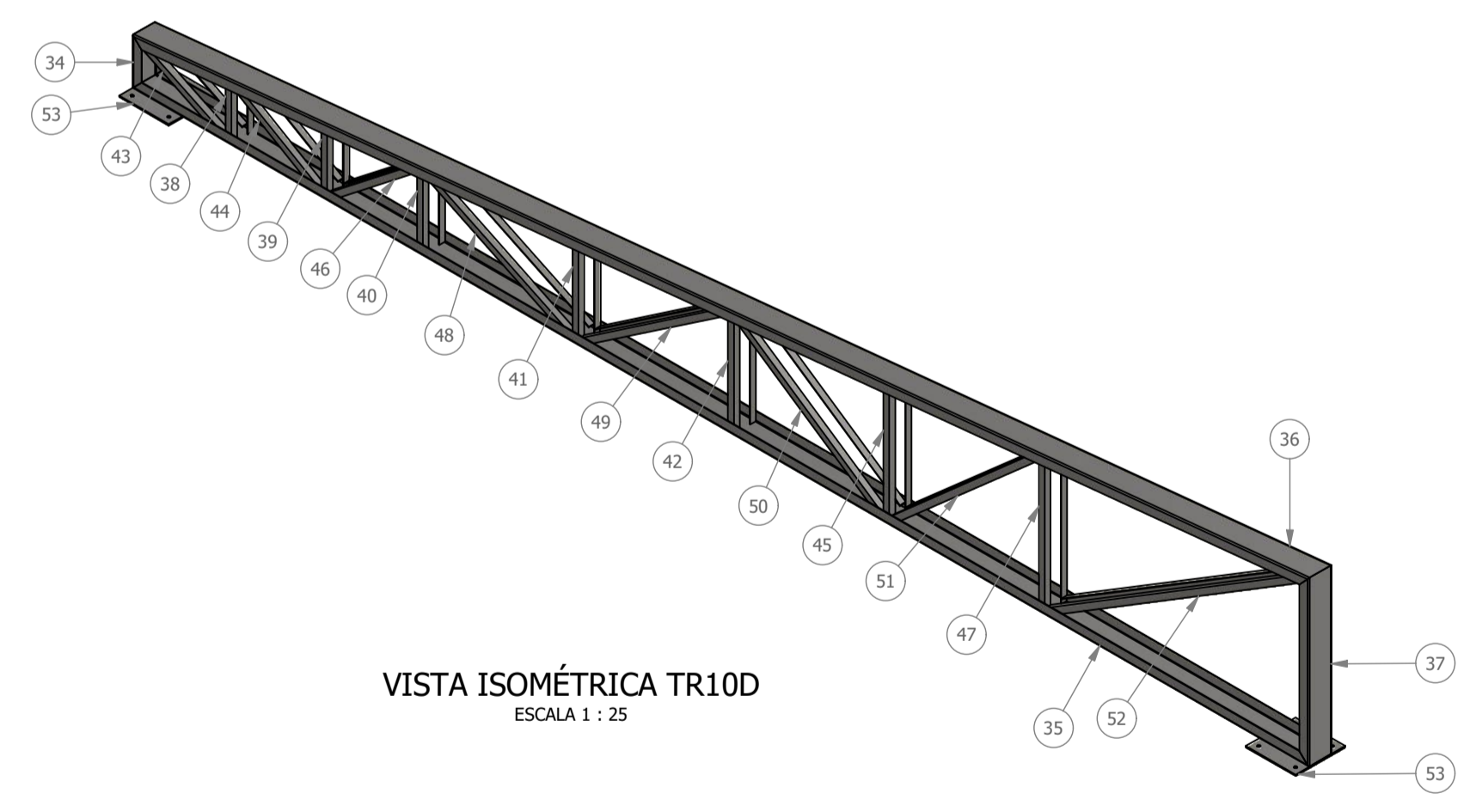
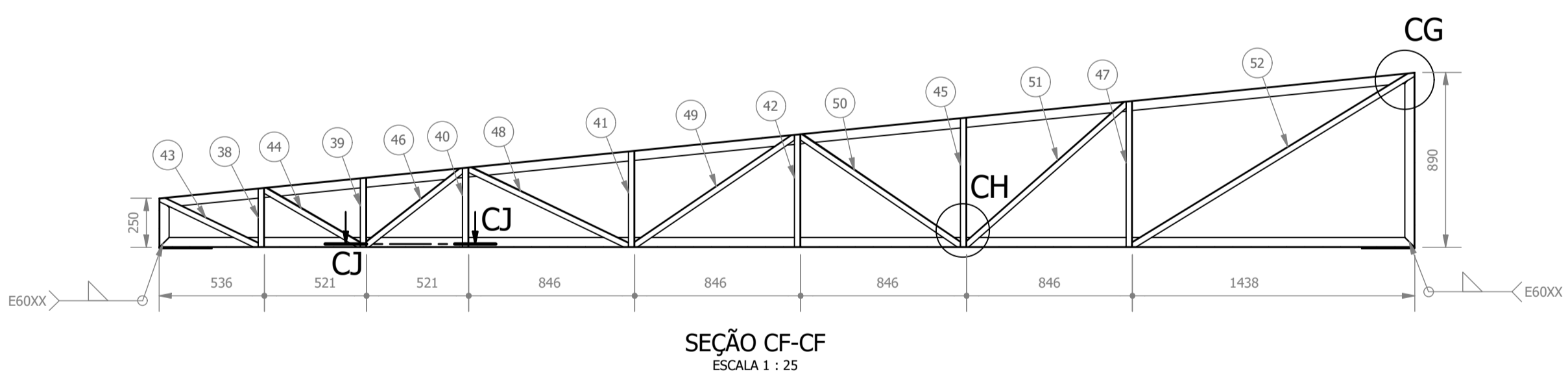


PERFIL U
ESCALA 1:5

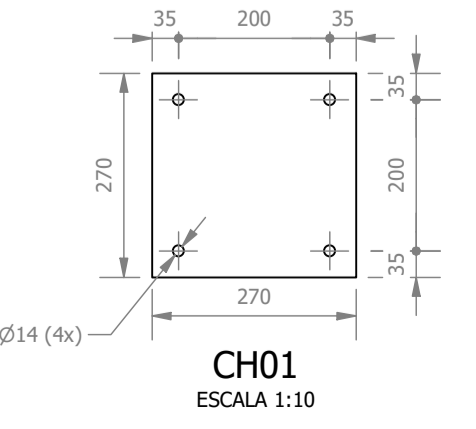
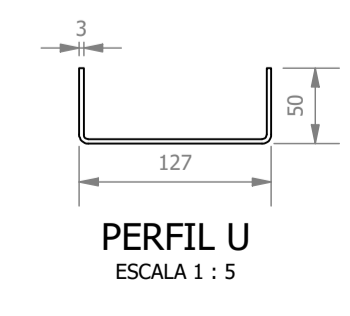
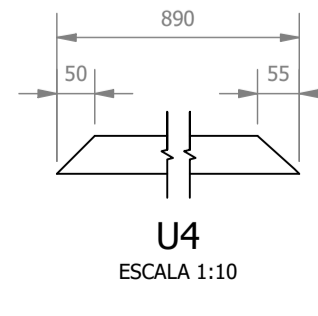
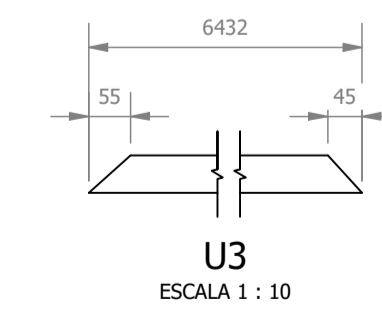
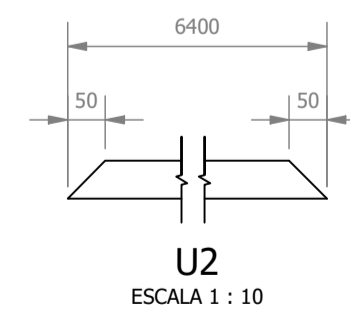
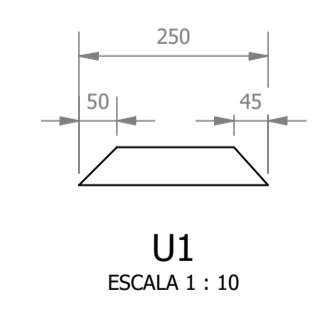


LISTA DE PEÇAS - TR10C						
ID	ITEM	QTD	DESCRIÇÃO	COMPRIM.	MATERIAL	PESO UNIT.
1	U1	1	PERFIL U 127x50x3	12650	Aço ASTM A36	64,6 kg
2	U2	1	PERFIL U 127x50x3	505	Aço ASTM A36	2,5 kg
3	U3	1	PERFIL U 127x50x3	520	Aço ASTM A36	2,5 kg
4	U4	1	PERFIL U 127x50x3	6281	Aço ASTM A36	32,1 kg
5	U5	1	PERFIL U 127x50x3	6432	Aço ASTM A36	32,8 kg
6	L1	2	CANTONEIRA L 1.1/4 x 1.1/4 x 1/8	571	Aço ASTM A36	0,9 kg
7	L2	2	CANTONEIRA L 1.1/4 x 1.1/4 x 1/8	574	Aço ASTM A36	0,9 kg
8	L3	2	CANTONEIRA L 1.1/4 x 1.1/4 x 1/8	648	Aço ASTM A36	1 kg
9	L4	2	CANTONEIRA L 1.1/4 x 1.1/4 x 1/8	656	Aço ASTM A36	1 kg
10	L5	2	CANTONEIRA L 1.1/4 x 1.1/4 x 1/8	722	Aço ASTM A36	1,1 kg
11	L6	2	CANTONEIRA L 1.1/4 x 1.1/4 x 1/8	740	Aço ASTM A36	1,2 kg
12	L7	2	CANTONEIRA L 1.1/4 x 1.1/4 x 1/8	742	Aço ASTM A36	1,1 kg
13	L8	2	CANTONEIRA L 1.1/4 x 1.1/4 x 1/8	822	Aço ASTM A36	1,3 kg
14	L9	2	CANTONEIRA L 1.1/4 x 1.1/4 x 1/8	842	Aço ASTM A36	1,3 kg
15	L10	2	CANTONEIRA L 1.1/4 x 1.1/4 x 1/8	876	Aço ASTM A36	1,3 kg
16	L11	2	CANTONEIRA L 1.1/4 x 1.1/4 x 1/8	910	Aço ASTM A36	1,4 kg
17	L12	2	CANTONEIRA L 1.1/4 x 1.1/4 x 1/8	922	Aço ASTM A36	1,4 kg
18	L13	2	CANTONEIRA L 1.1/4 x 1.1/4 x 1/8	944	Aço ASTM A36	1,5 kg
19	L14	2	CANTONEIRA L 1.1/4 x 1.1/4 x 1/8	994	Aço ASTM A36	1,5 kg
20	L15	2	CANTONEIRA L 1.1/4 x 1.1/4 x 1/8	1008	Aço ASTM A36	1,5 kg
21	L16	2	CANTONEIRA L 1.1/4 x 1.1/4 x 1/8	1031	Aço ASTM A36	1,6 kg
22	L17	2	CANTONEIRA L 1.1/4 x 1.1/4 x 1/8	1042	Aço ASTM A36	1,6 kg
23	L18	2	CANTONEIRA L 1.1/4 x 1.1/4 x 1/8	1092	Aço ASTM A36	1,7 kg
24	L19	2	CANTONEIRA L 1.1/4 x 1.1/4 x 1/8	1139	Aço ASTM A36	1,8 kg
25	L20	2	CANTONEIRA L 1.1/4 x 1.1/4 x 1/8	1209	Aço ASTM A36	1,9 kg
26	L21	2	CANTONEIRA L 1.1/4 x 1.1/4 x 1/8	1232	Aço ASTM A36	1,9 kg
27	L22	2	CANTONEIRA L 1.1/4 x 1.1/4 x 1/8	1336	Aço ASTM A36	2,1 kg
28	L23	2	CANTONEIRA L 1.1/4 x 1.1/4 x 1/8	1341	Aço ASTM A36	2,1 kg
29	L24	2	CANTONEIRA L 1.1/4 x 1.1/4 x 1/8	1362	Aço ASTM A36	2,1 kg
30	L25	2	CANTONEIRA L 1.1/4 x 1.1/4 x 1/8	1405	Aço ASTM A36	2,2 kg
31	L26	2	CANTONEIRA L 1.1/4 x 1.1/4 x 1/8	1484	Aço ASTM A36	2,3 kg
32	L27	2	CANTONEIRA L 1.1/4 x 1.1/4 x 1/8	1554	Aço ASTM A36	2,4 kg
33	Ch1	3	270 x 270 x 6,35		Aço ASTM A36	3,6 kg

LISTA DE PEÇAS - TR10D						
ID	ITEM	QTD	DESCRIÇÃO	COMPRIM.	MATERIAL	PESO UNIT.
34	U1	1	PERFIL U 127x50x3	250	Aço ASTM A36	1,2 kg
35	U2	1	PERFIL U 127x50x3	6400	Aço ASTM A36	32,6 kg
36	U3	1	PERFIL U 127x50x3	6432	Aço ASTM A36	32,8 kg
37	U4	1	PERFIL U 127x50x3	890	Aço ASTM A36	4,4 kg
38	L1	2	CANTONEIRA L 1.1/4 x 1.1/4 x 1/8	298	Aço ASTM A36	0,5 kg
39	L2	2	CANTONEIRA L 1.1/4 x 1.1/4 x 1/8	350	Aço ASTM A36	0,5 kg
40	L3	2	CANTONEIRA L 1.1/4 x 1.1/4 x 1/8	402	Aço ASTM A36	0,6 kg
41	L4	2	CANTONEIRA L 1.1/4 x 1.1/4 x 1/8	486	Aço ASTM A36	0,8 kg
42	L5	2	CANTONEIRA L 1.1/4 x 1.1/4 x 1/8	571	Aço ASTM A36	0,9 kg
43	L6	2	CANTONEIRA L 1.1/4 x 1.1/4 x 1/8	558	Aço ASTM A36	0,8 kg
44	L7	2	CANTONEIRA L 1.1/4 x 1.1/4 x 1/8	572	Aço ASTM A36	0,9 kg
45	L8	2	CANTONEIRA L 1.1/4 x 1.1/4 x 1/8	656	Aço ASTM A36	1 kg
46	L9	2	CANTONEIRA L 1.1/4 x 1.1/4 x 1/8	631	Aço ASTM A36	1 kg
47	L10	2	CANTONEIRA L 1.1/4 x 1.1/4 x 1/8	740	Aço ASTM A36	1,2 kg
48	L11	2	CANTONEIRA L 1.1/4 x 1.1/4 x 1/8	908	Aço ASTM A36	1,4 kg
49	L12	2	CANTONEIRA L 1.1/4 x 1.1/4 x 1/8	993	Aço ASTM A36	1,5 kg
50	L13	2	CANTONEIRA L 1.1/4 x 1.1/4 x 1/8	994	Aço ASTM A36	1,5 kg
51	L14	2	CANTONEIRA L 1.1/4 x 1.1/4 x 1/8	1098	Aço ASTM A36	1,7 kg
52	L15	2	CANTONEIRA L 1.1/4 x 1.1/4 x 1/8	1686	Aço ASTM A36	2,6 kg
53	Ch1	2	270 x 270 x 6,35		Aço ASTM A36	3,6 kg



VISTA ISOMÉTRICA TR10D
ESCALA 1:25



REV. 01	28/04/23	CONFORME SOLICITAÇÕES DA VIGILÂNCIA SANITÁRIA	DAC
REV. 00	31/01/23	EMIÇÃO INICIAL	DAC
REVISÃO:	DATA:	DESCRIÇÃO	RESP.:
CLIENTE			
 <p>Prefeitura Municipal de Pouso Alegre</p>			
 <p>Rua Miguel Vianna, nº 81, sala 12 Bairro Morro Chic CEP: 37500-080 - Itajubá / MG Tel: (35) 3623-5720 www.dacengenharia.com.br</p>		COORDENAÇÃO ALOSIO CAETANO FERREIRA RESPONSÁVEL TÉCNICO E AUTOR ENGR. CIVIL FLÁVIA C. BARBOSA CREA: MG-187.842/D	
EMPRESAMENTO			
CONSTRUÇÃO DA UNIDADE DE PRONTO ATENDIMENTO			
ENDEREÇO RUA PIRANGUINHO, B. SÃO JOÃO POUSO ALEGRE - MINAS GERAIS		DISCIPLINA METÁLICA FASE DO PROJETO EXECUTIVO	
ASSUNTO PROJETO DE ESTRUTURA METÁLICA DETALHAMENTO E LISTA DE MATERIAIS		FOLHA Nº: 11/15	
DATA INICIAL	ESCALA	REVISÃO	ARQUIVO
31/01/2023	INDICADA	R01	DAC/PMPA-JPA-PE-MET-R01-11.DWG