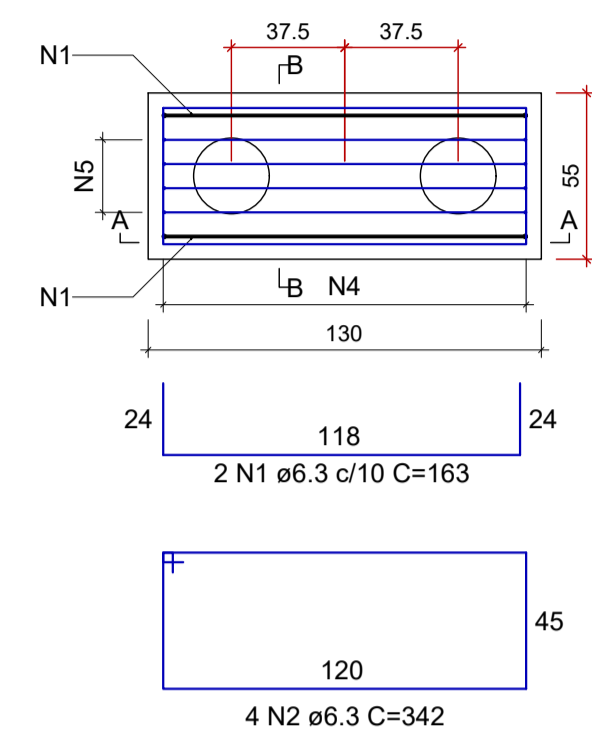


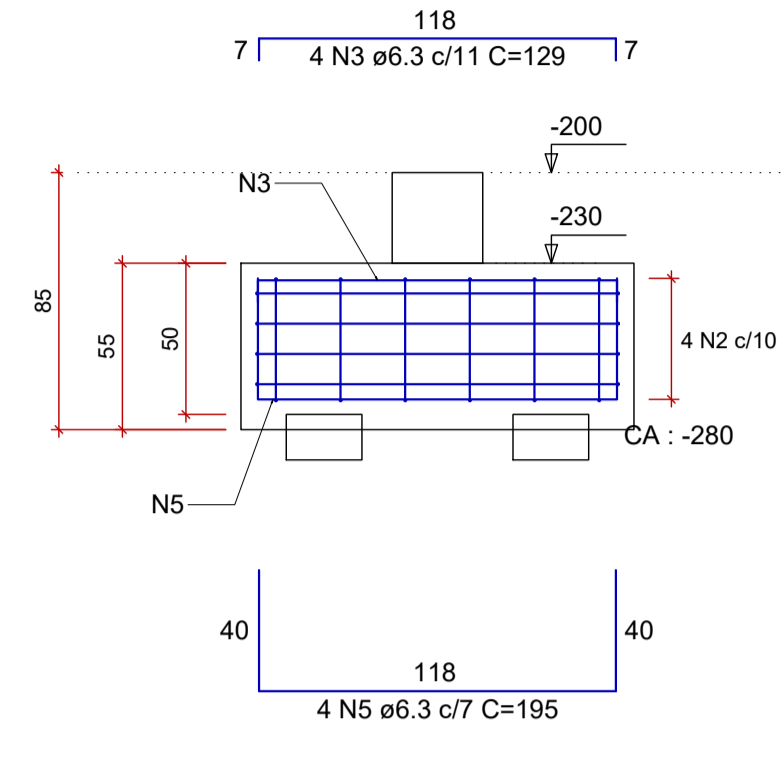
PROJETO ESTRUTURAL - CONSTRUÇÃO DA UNIDADE DE PRONTO ATENDIMENTO
ESCALA INDICADA

B1=B2=B3=B4=B5=B6=B7=B8=B9=B10=B11=B12
=B13
2xC25

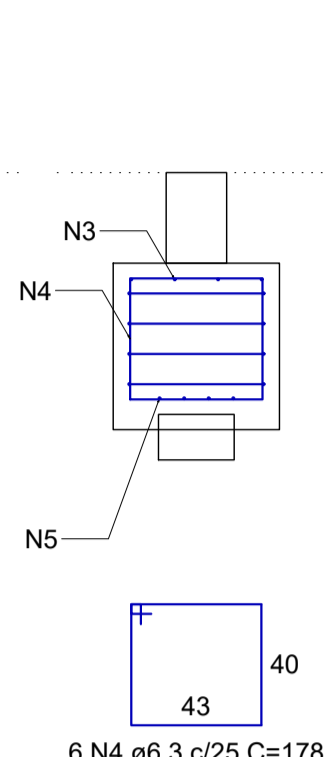
PLANTA
ESCALA 1:25



CORTE A-A
ESCALA 1:25

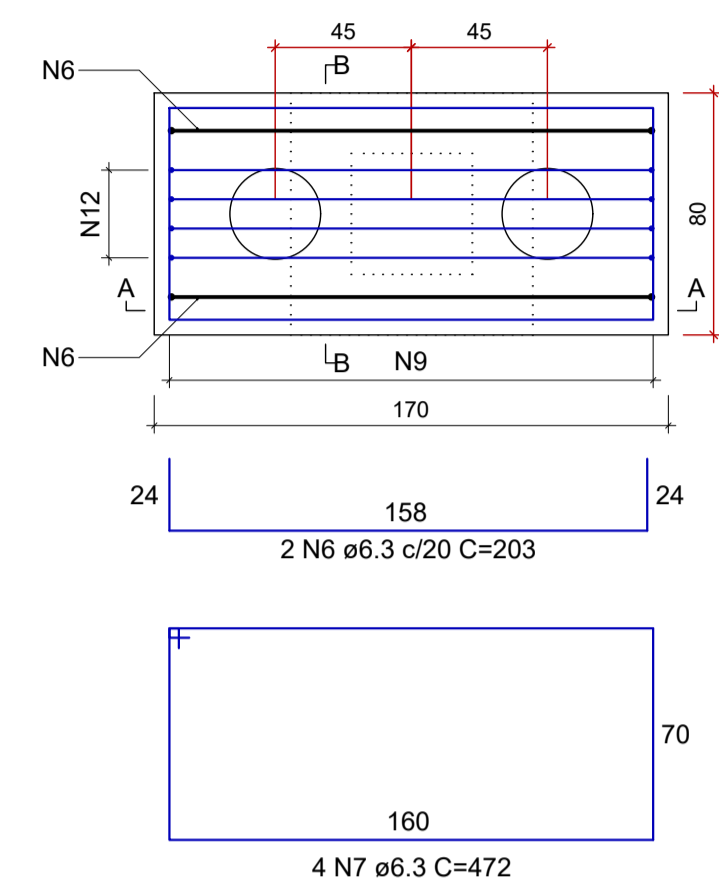


CORTE B-B
ESCALA 1:25

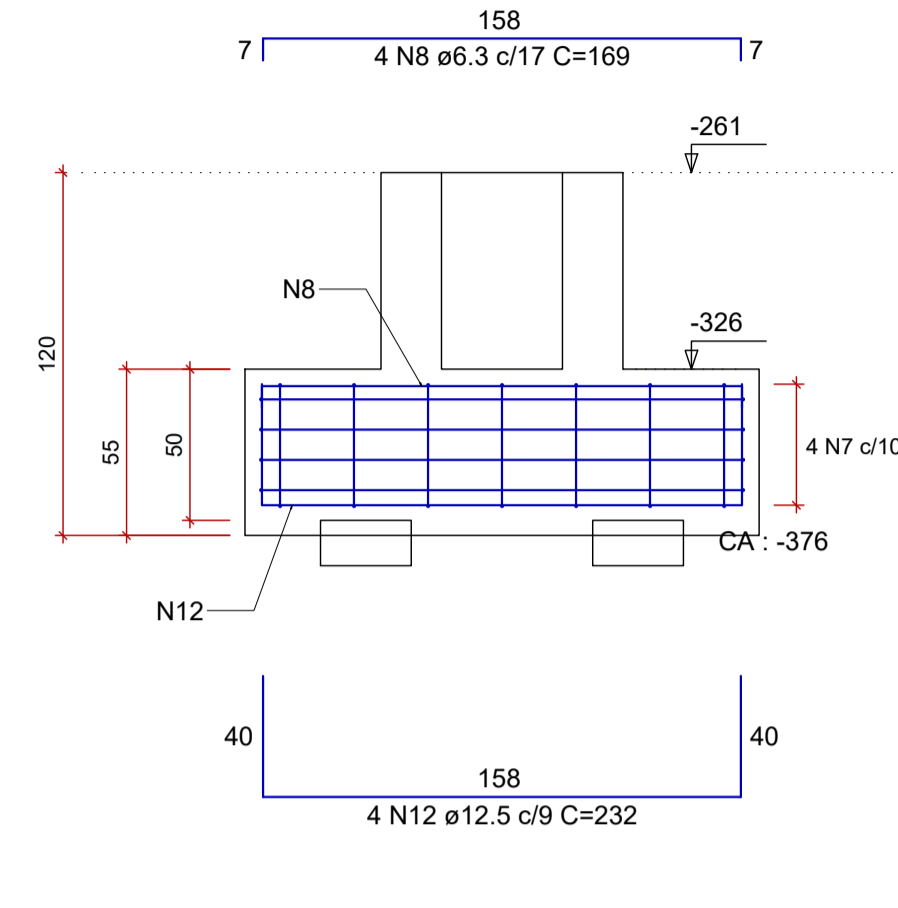


BM20
2xC30

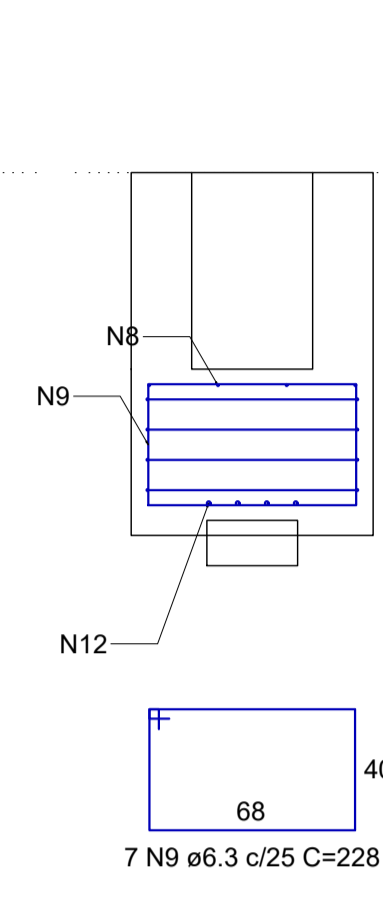
PLANTA
ESCALA 1:25



CORTE A-A
ESCALA 1:25

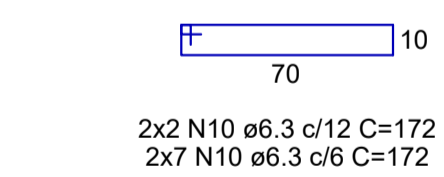
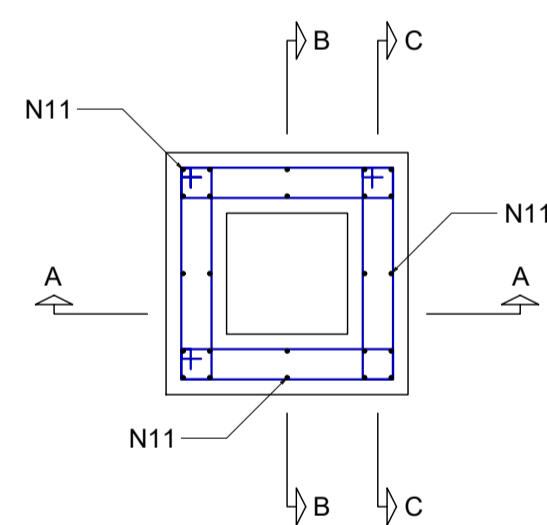
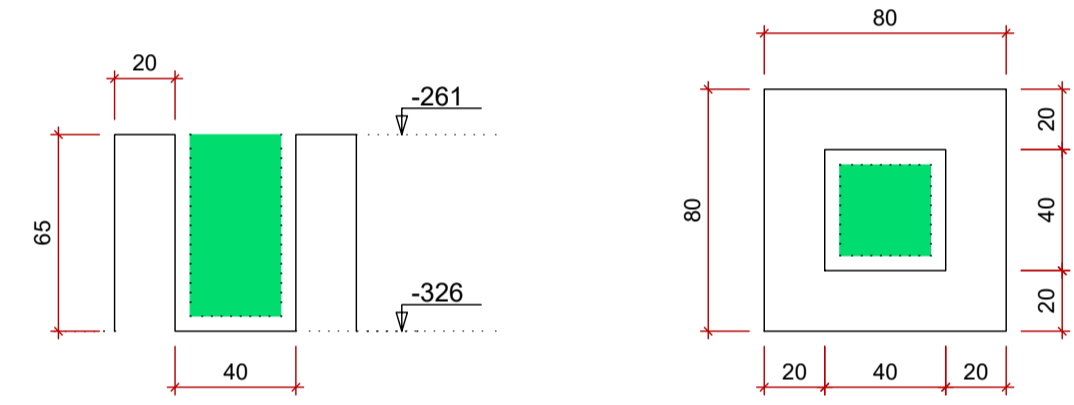


CORTE B-B
ESCALA 1:25

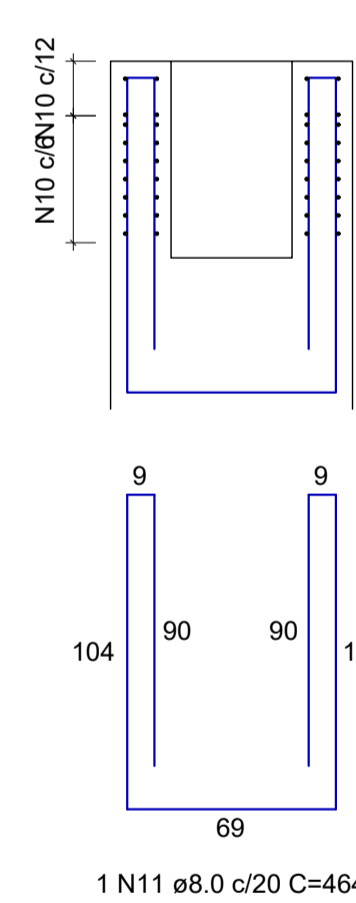


Cálce PM20

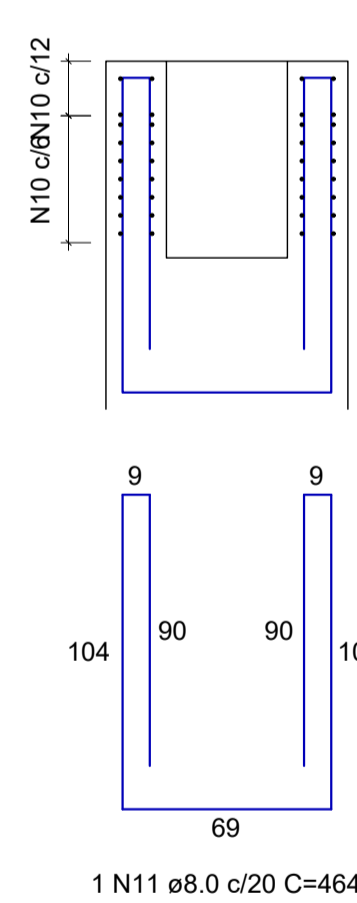
ESC 1:25



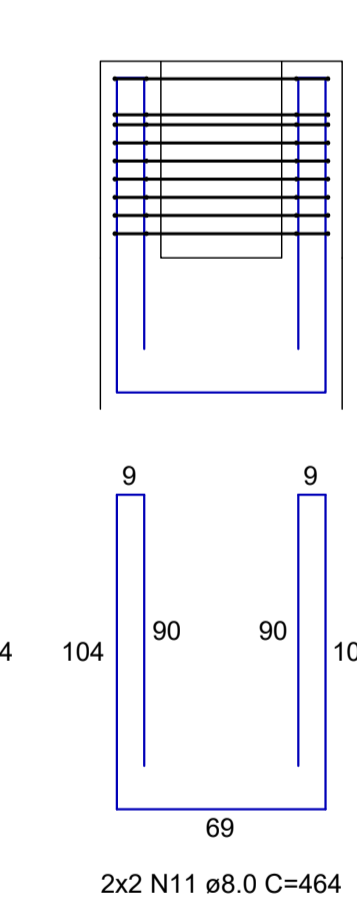
CORTE A-A



CORTE B-B

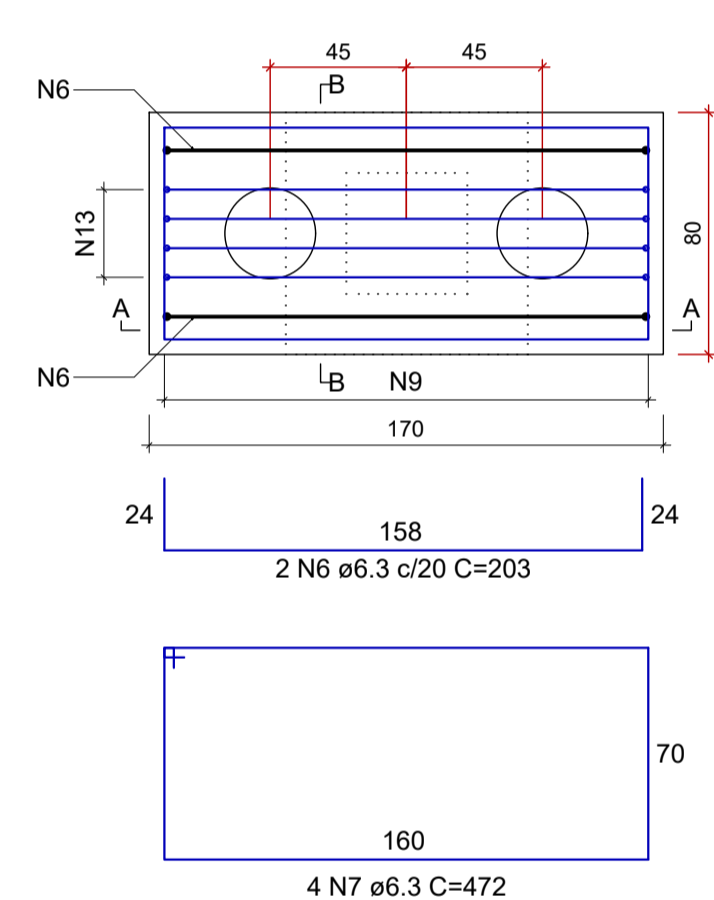


CORTE C-C

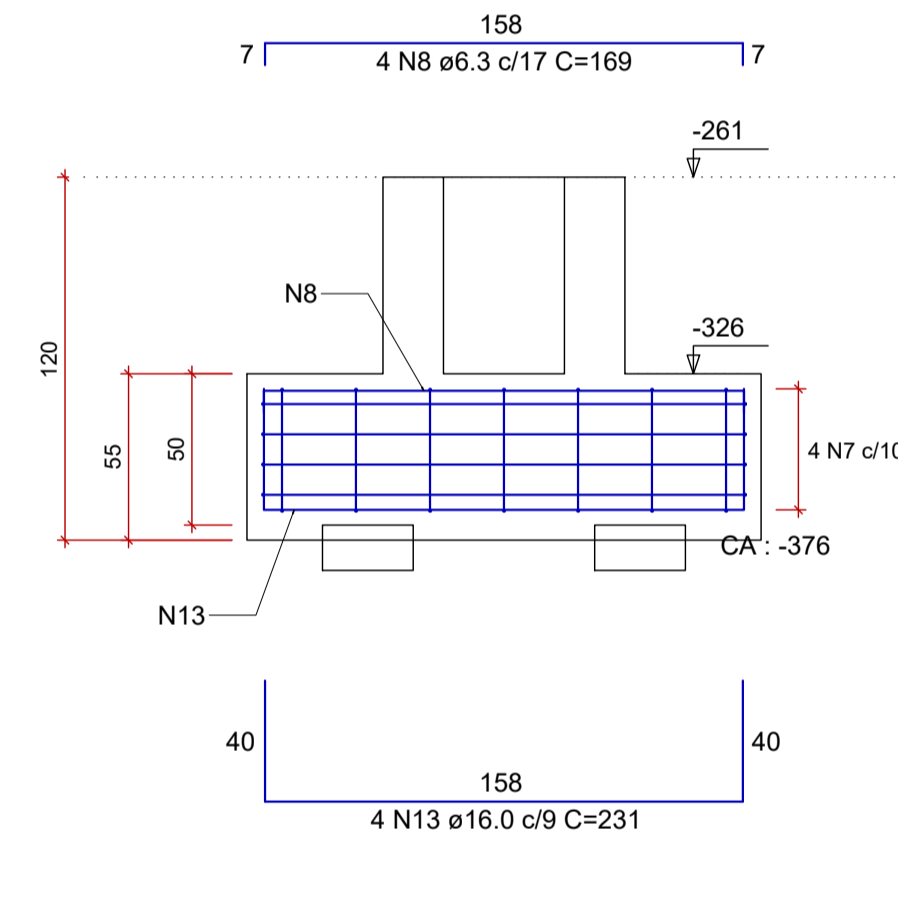


BM26
2xC30

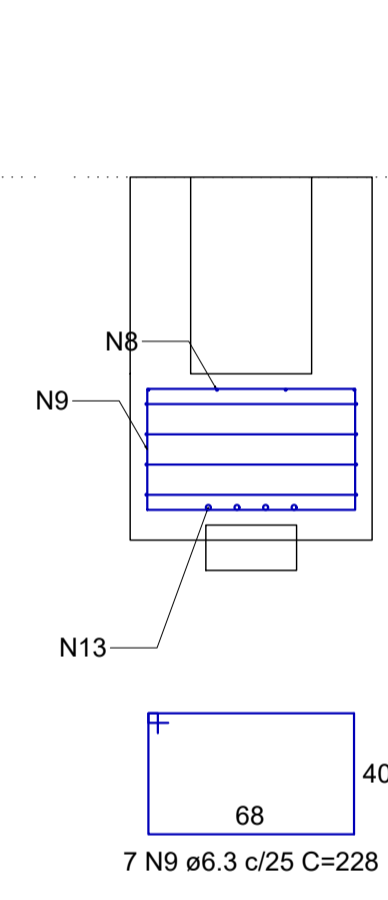
PLANTA
ESCALA 1:25



CORTE A-A
ESCALA 1:25



CORTE B-B
ESCALA 1:25



RELAÇÃO DO AÇO

| AÇO | N | DIAM (mm) | QUANT | C.UNIT (cm) | C.TOTAL (cm) |
|------|----|-----------|-------|-------------|--------------|
| CA50 | 1 | 6.3 | 26 | 163 | 4238 |
| | 2 | 6.3 | 52 | 342 | 17784 |
| | 3 | 6.3 | 52 | 129 | 6708 |
| | 4 | 6.3 | 78 | 178 | 13884 |
| | 5 | 6.3 | 52 | 195 | 10140 |
| | 6 | 6.3 | 4 | 203 | 812 |
| | 7 | 6.3 | 8 | 472 | 3776 |
| | 8 | 6.3 | 8 | 169 | 1352 |
| | 9 | 6.3 | 14 | 228 | 3192 |
| | 10 | 6.3 | 36 | 172 | 6192 |
| | 11 | 8.0 | 6 | 464 | 2784 |
| | 12 | 12.5 | 4 | 232 | 928 |
| | 13 | 16.0 | 4 | 231 | 924 |

RESUMO DO AÇO

| AÇO | DIAM (mm) | C.TOTAL (m) | PESO + 10% (kg) |
|-----------------|-----------|-------------|-----------------|
| CA50 | 6.3 | 680.8 | 183.2 |
| | 8.0 | 27.8 | 12.1 |
| | 12.5 | 9.3 | 9.8 |
| | 16.0 | 9.2 | 16 |
| PESO TOTAL (kg) | | | |
| CA50 | | 221.2 | |

Volume de concreto (C-25) = 7.15 m³
Área de forma = 39.23 m²

| REV. | DATA | DESCRIÇÃO | RESP. |
|----------|----------|---|--------|
| REV. 02 | 07/07/23 | CONFORME SOLICITAÇÕES DA VIGILANCIA SANITÁRIA | DAC |
| REV. 01 | 28/04/23 | CONFORME SOLICITAÇÕES DA VIGILANCIA SANITÁRIA | DAC |
| REV. 00 | 31/01/23 | EMISSÃO INICIAL | DAC |
| REVISÃO: | DATA: | DESCRIÇÃO: | RESP.: |



DAC Engenharia
 Rua Miguel Vianna, nº 81, 2º Andar
 Bairro Morro Chic
 CEP: 37500-080 - Itajubá / MG
 Tel: (35) 3623-8846
 www.dacengenharia.com.br

COORDENAÇÃO: ALOÍSIO CAETANO FERREIRA
 RESPONSÁVEL TÉCNICO E AUTOR: ENG. CIVIL FLÁVIA BARBOSA CREA-MG-187.842/D

EMPREENDIMENTO: CONSTRUÇÃO DA UNIDADE DE PRONTO ATENDIMENTO

ENDEREÇO: RUA PIRANGUINHO, B. SÃO JOÃO
POUSO ALEGRE - MINAS GERAIS

ASSUNTO: PROJETO ESTRUTURAL
DETALHAMENTO DOS BLOCOS DE COROAMENTO E CÁLCES
LISTA DE MATERIAIS

DISCIPLINA: ESTRUTURAL
FASE DO PROJETO: EXECUTIVO
FOLHA Nº: 05/72

DATA INICIAL: 31/01/2023 | ESCALA: INDICADA | REVISÃO: R01 | ARQUIVO: DAC-PMPA-UPA-PE-EST-R02.DWG