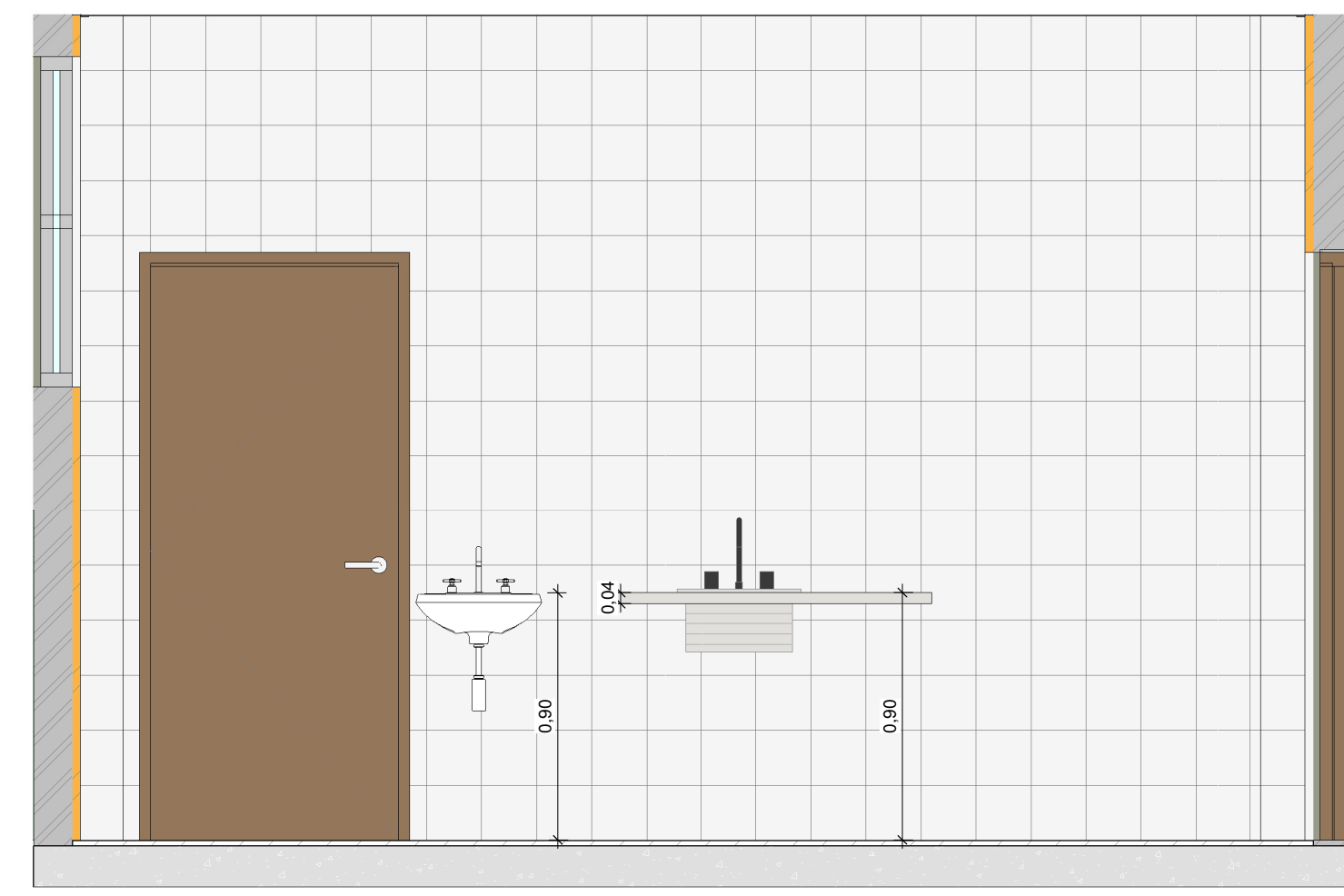
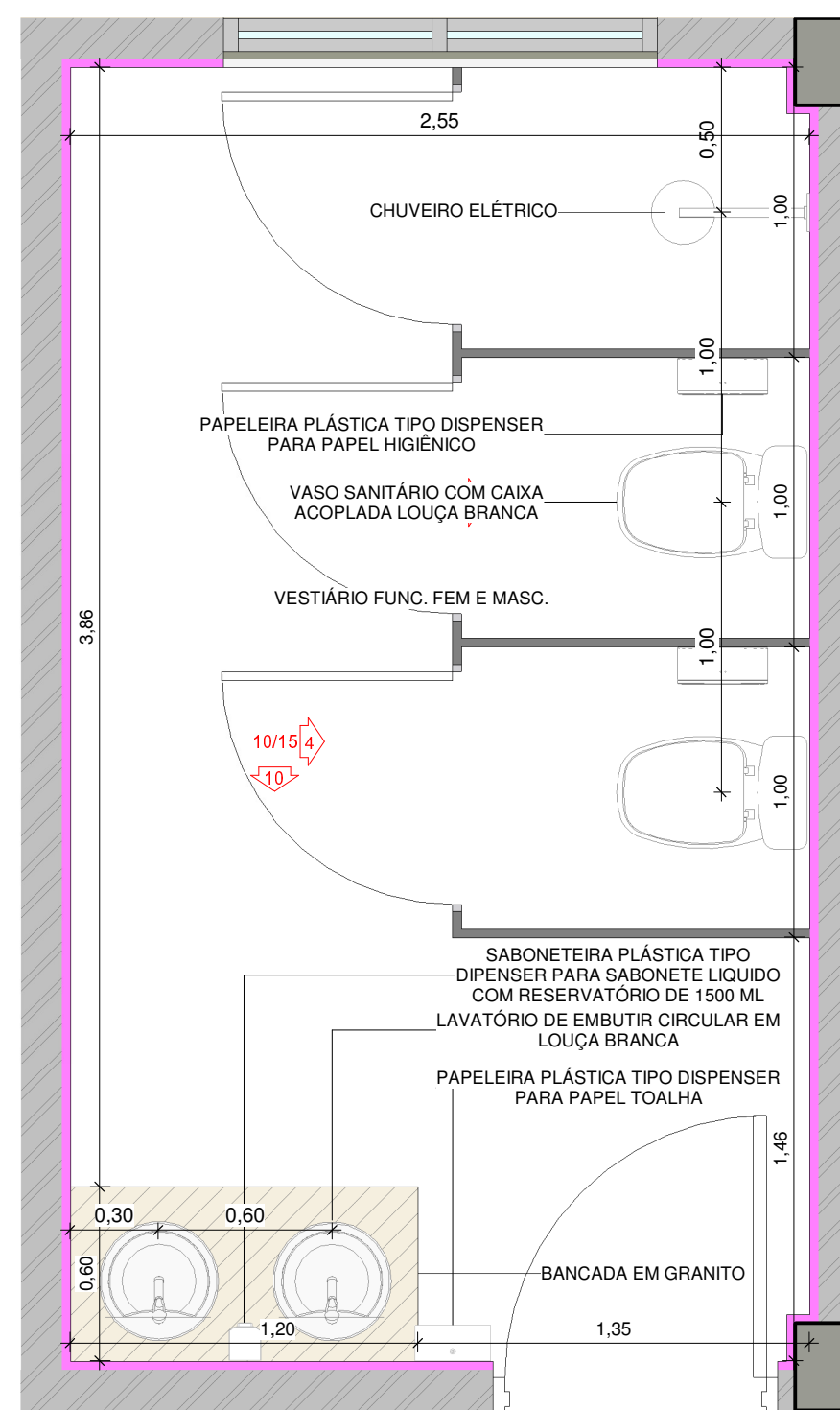


1 DETALHE COPA DE DISTRIBUIÇÃO  
1:25



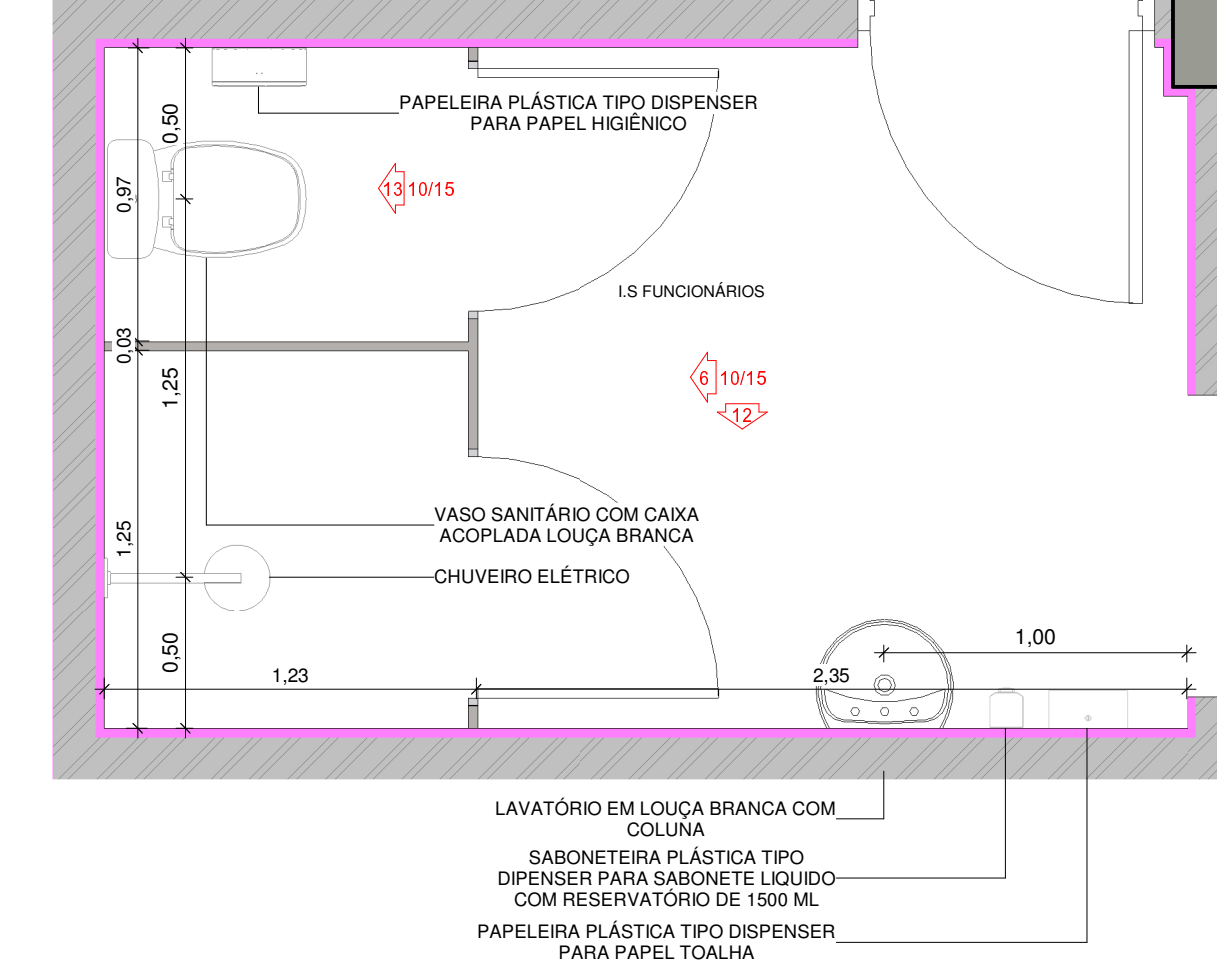
2 DETALHE 2 - COPA DE DISTRIBUIÇÃO  
1:25



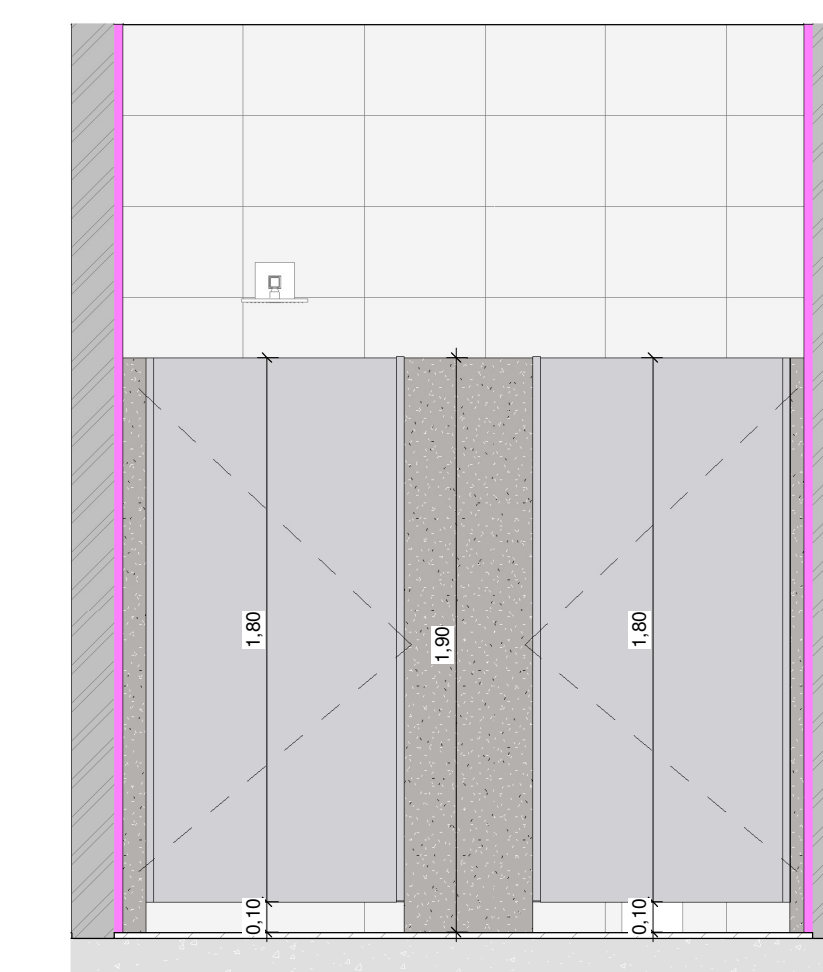
3 DETALHE VESTIÁRIO FUNC. FEM E MASC.  
1:25



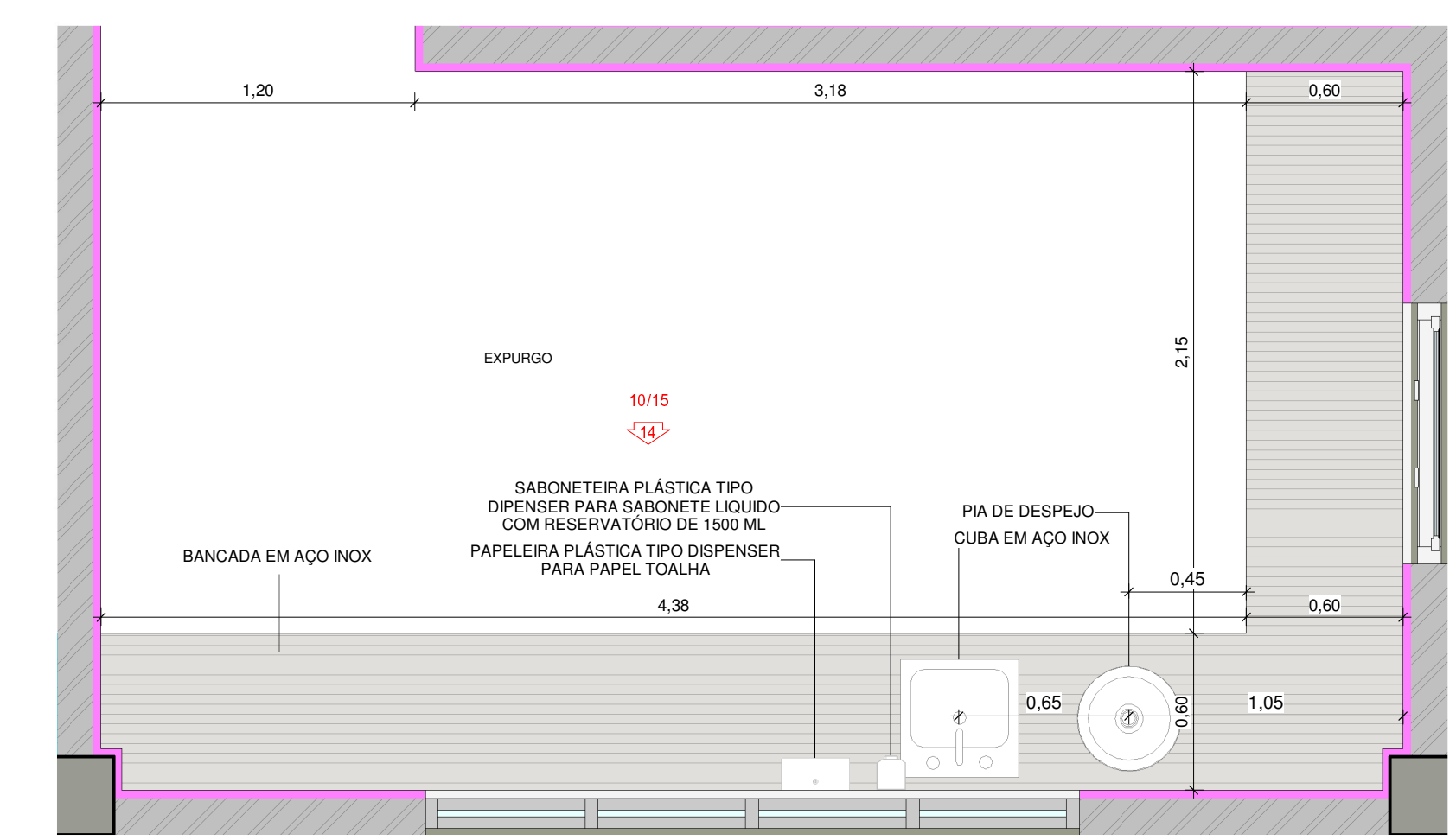
4 DETALHE 2 - VESTIÁRIO FUNC. FEM. E MASC.  
1:25



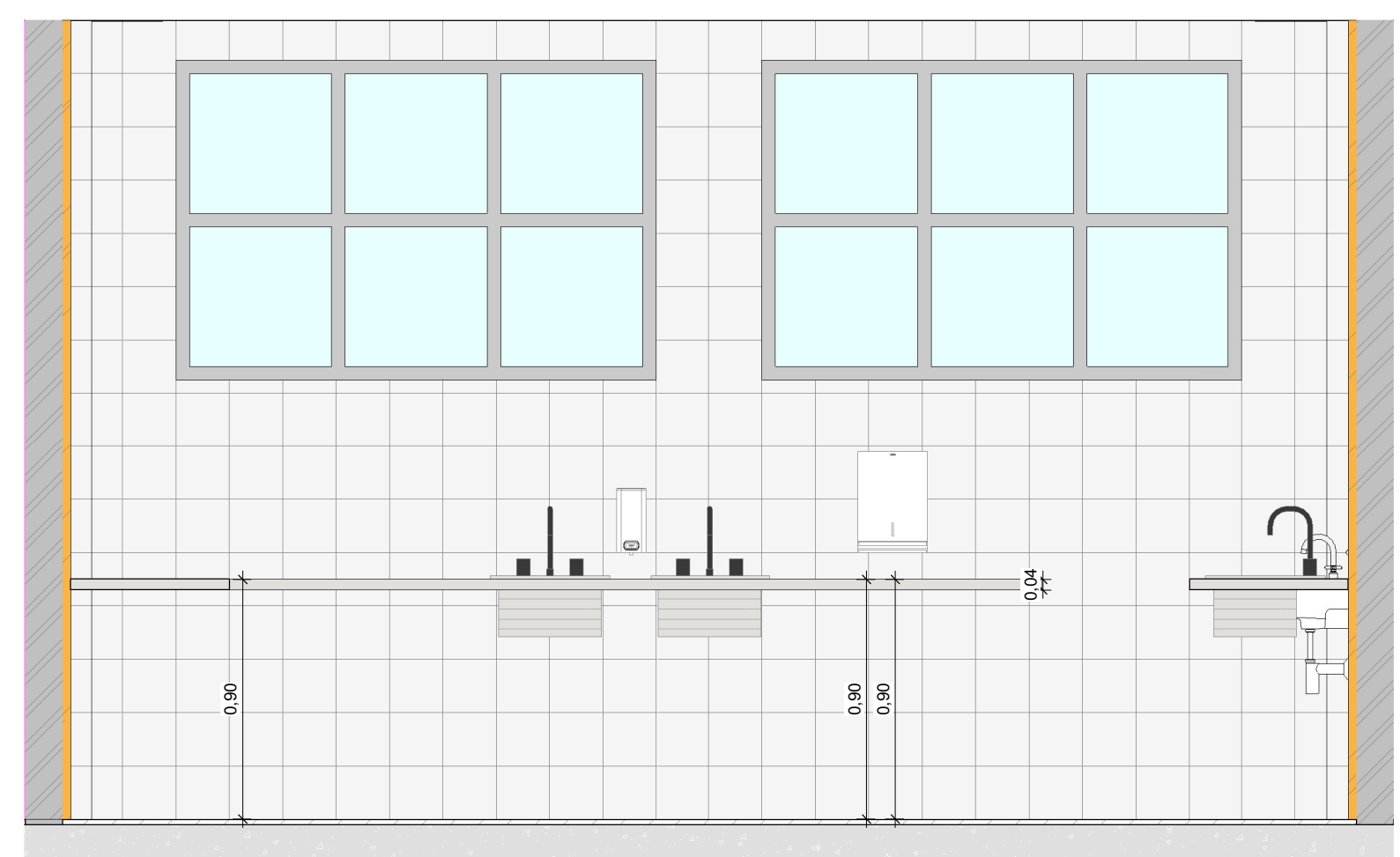
5 DETALHE 1 S FUNCIONÁRIOS  
1:25



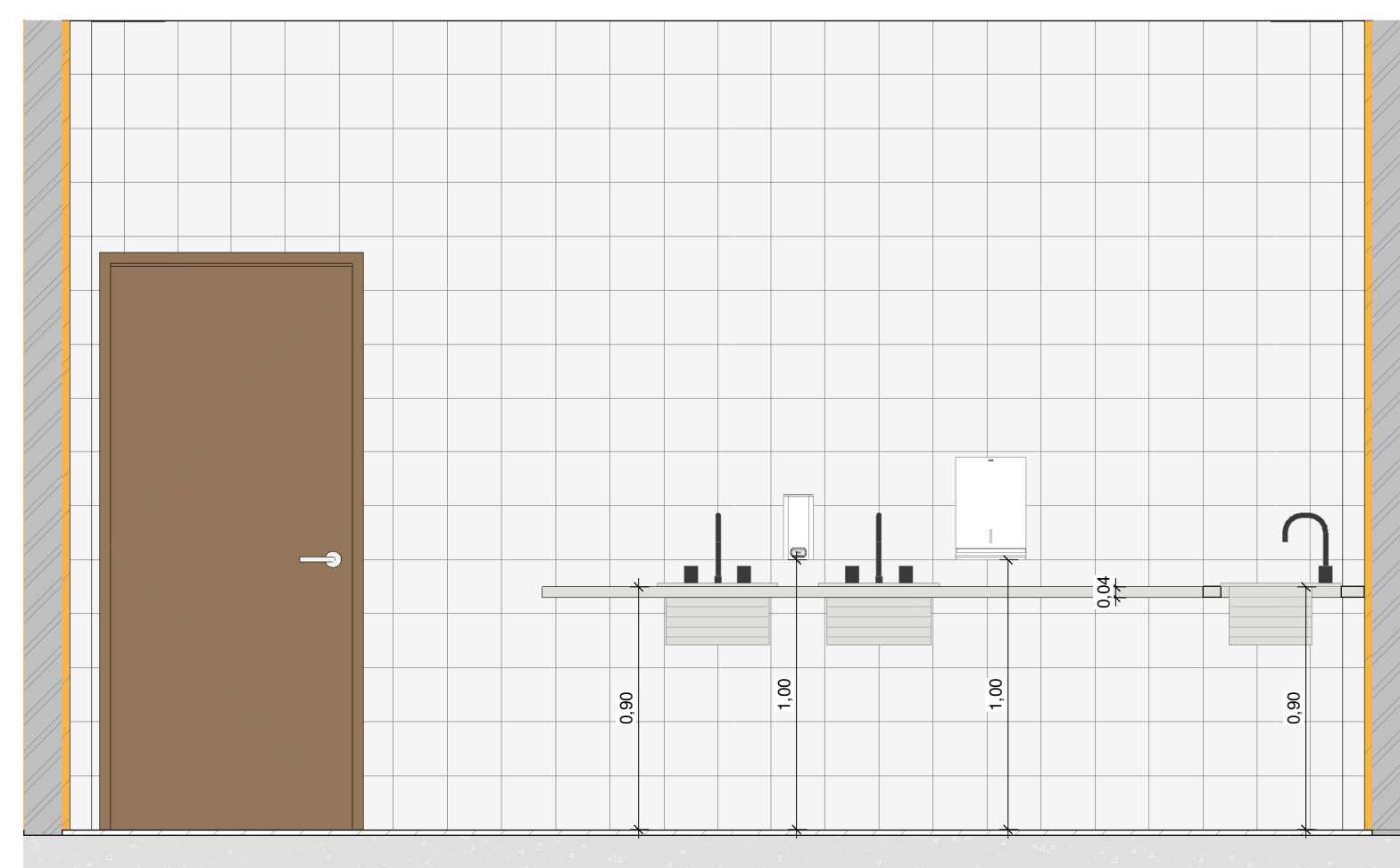
6 DETALHE 2 - I.S FUNCIONÁRIOS  
1:25



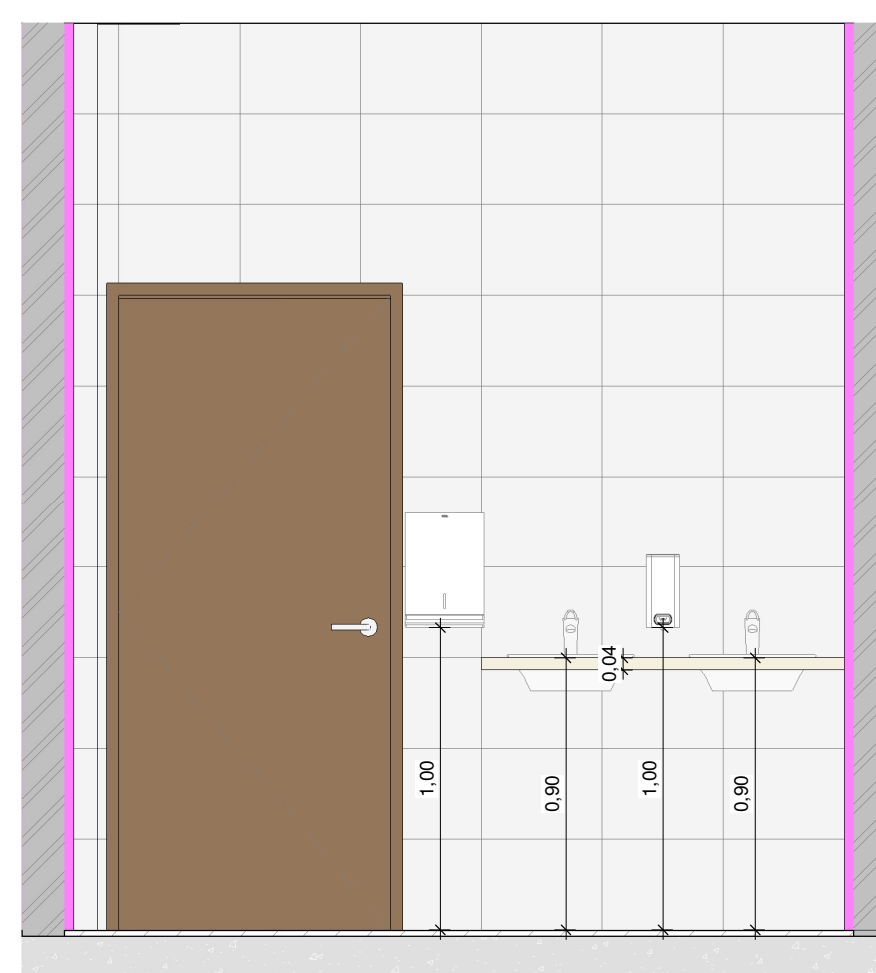
7 DETALHE EXPURGO  
1:25



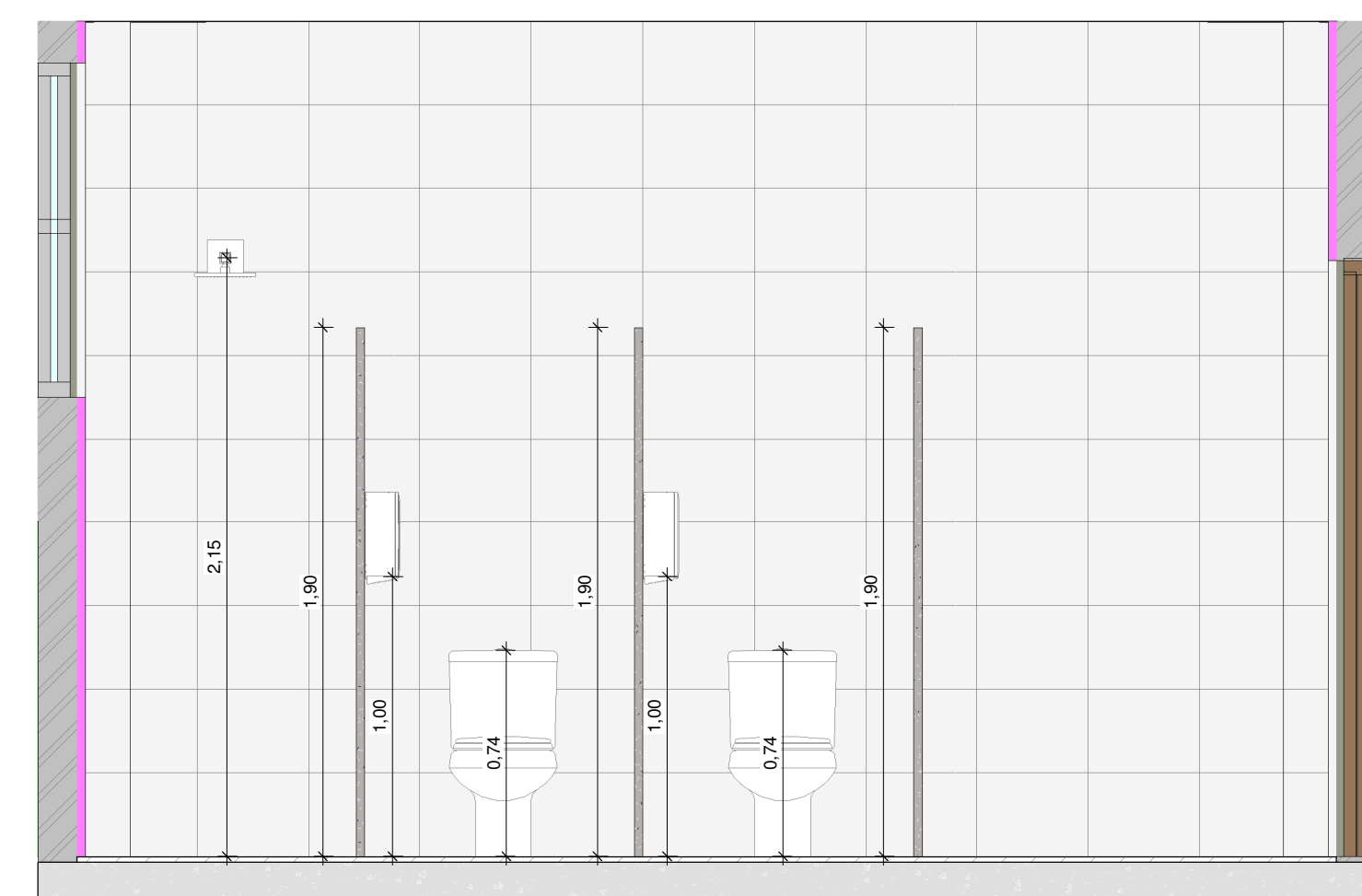
8 DETALHE 1 - COPA DE DISTRIBUIÇÃO  
1:25



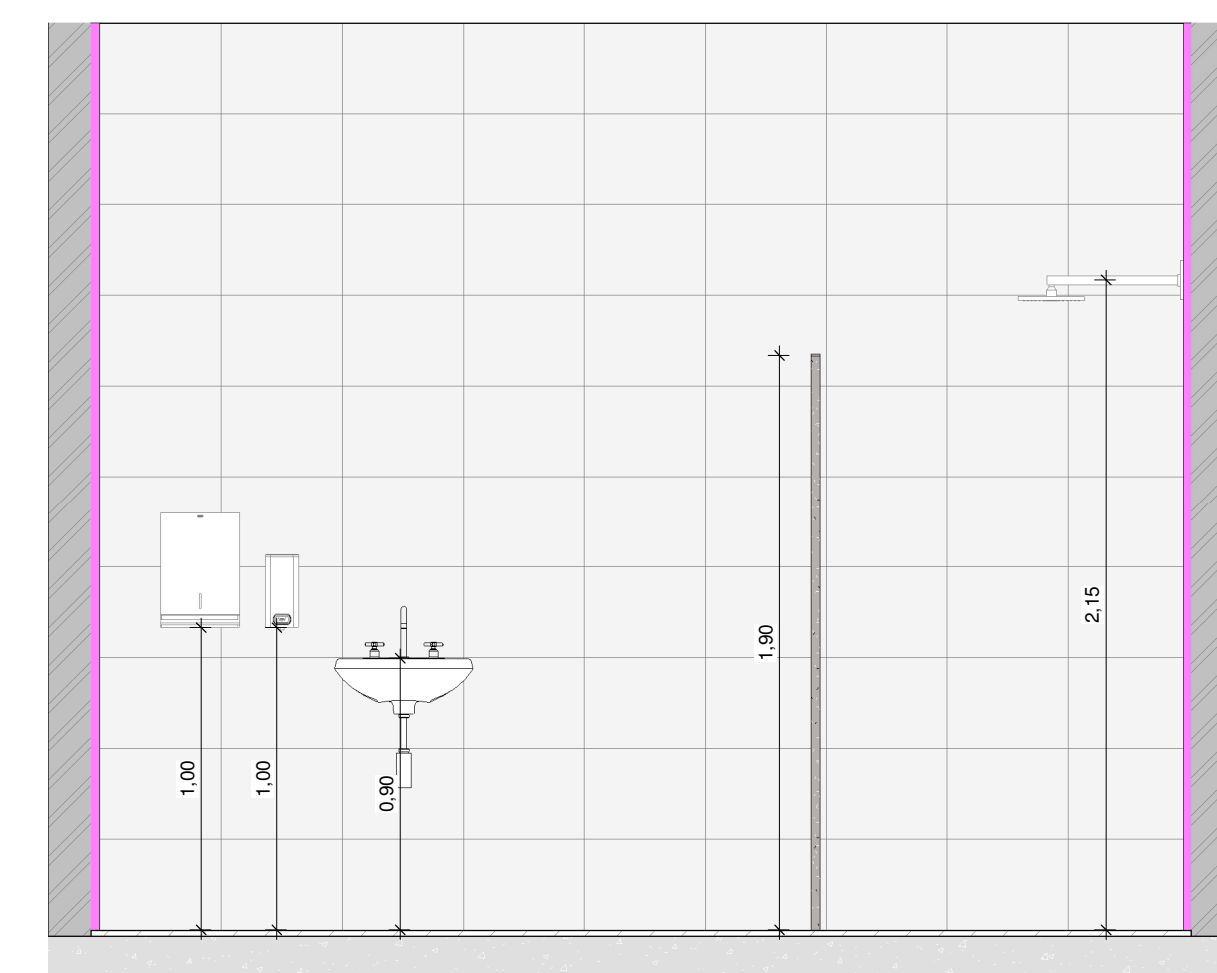
9 DETALHE 3 - COPA DE DISTRIBUIÇÃO  
1:25



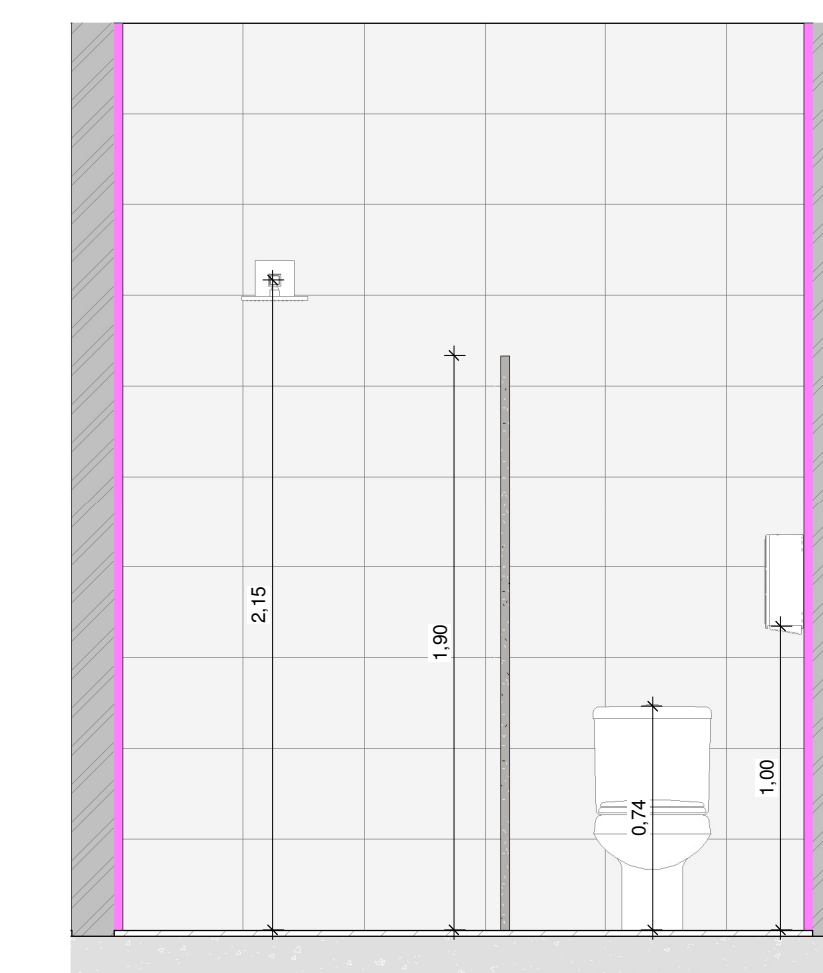
10 DETALHE 1 VESTIÁRIO FUNC. FEM E MASC.  
1:25



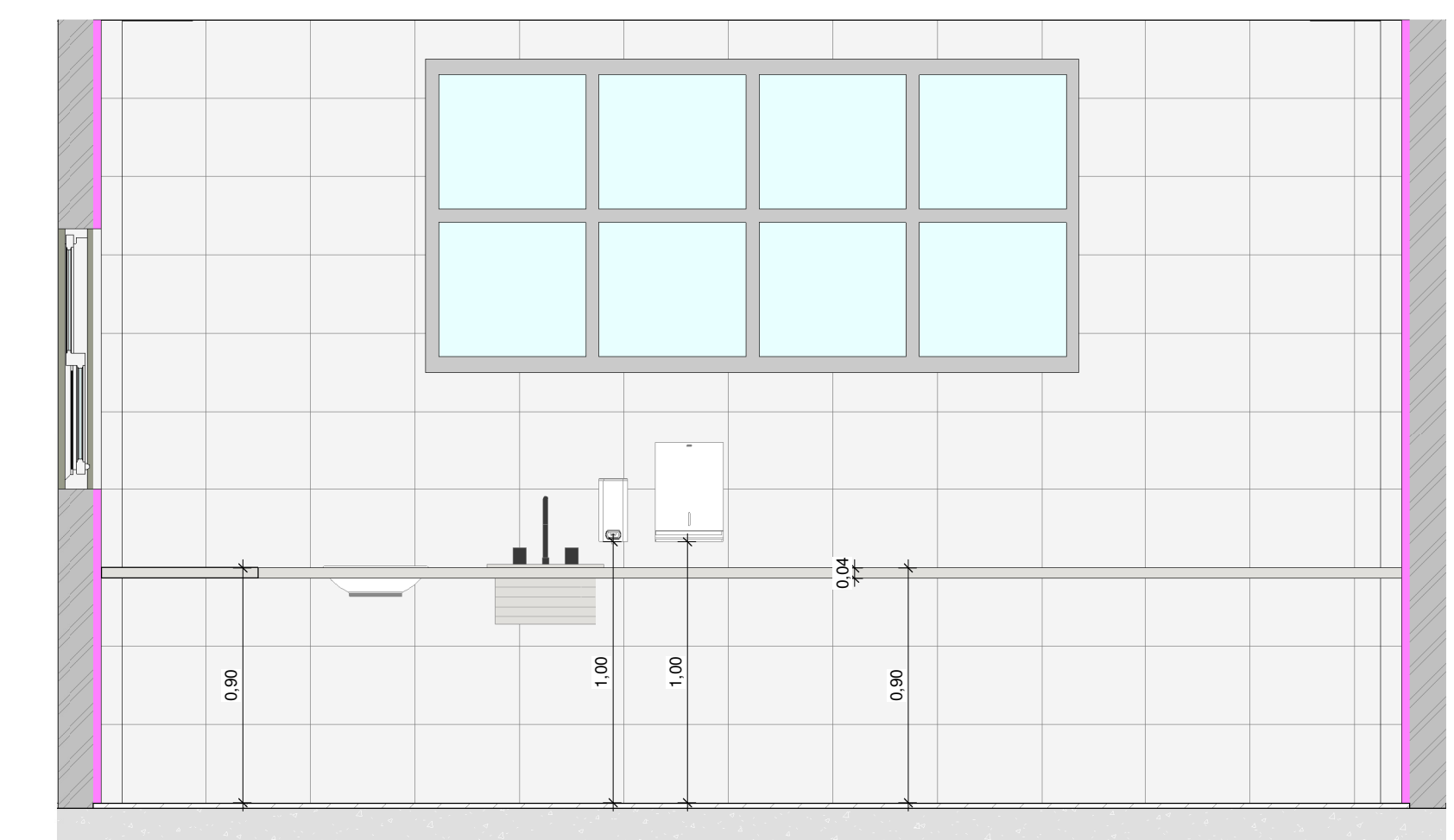
11 DETALHE 3 - VESTIÁRIO FUNC. FEM. E MASC.  
1:25



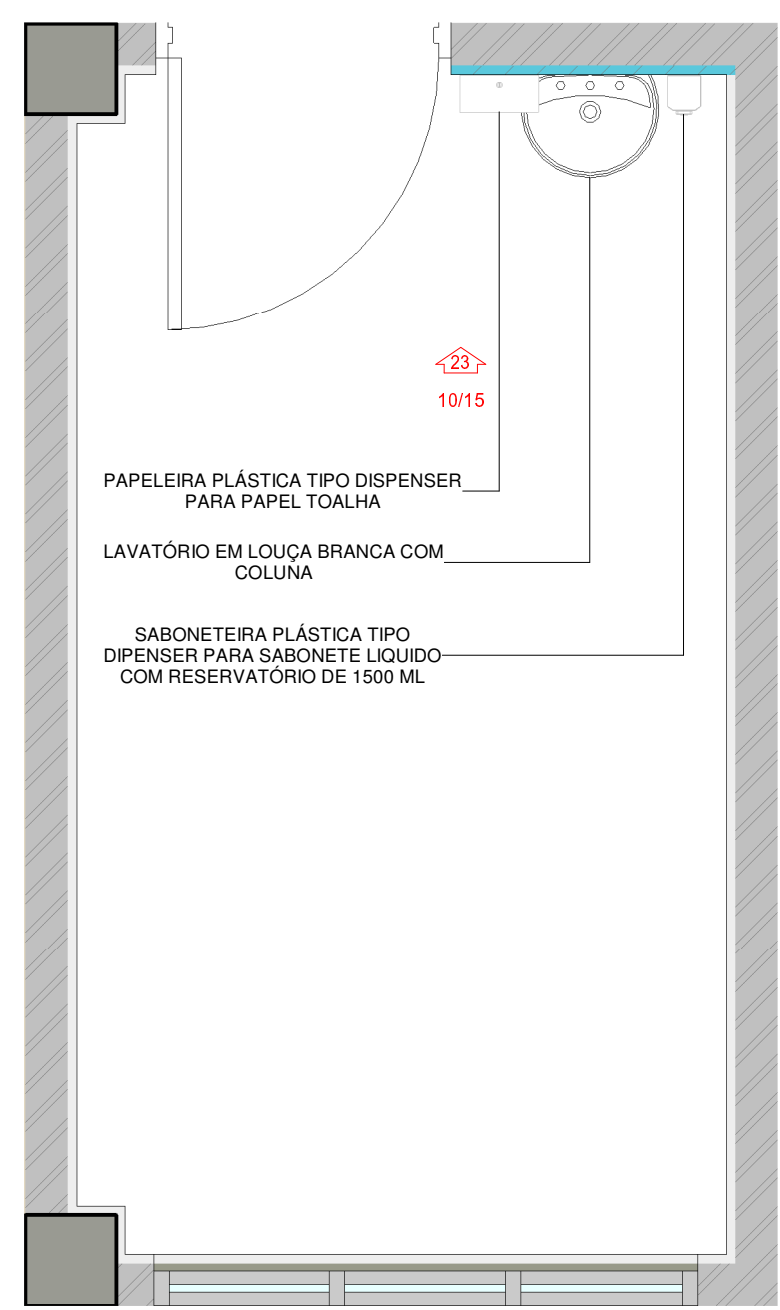
12 DETALHE 1 - I.S FUNCIONÁRIOS  
1:25



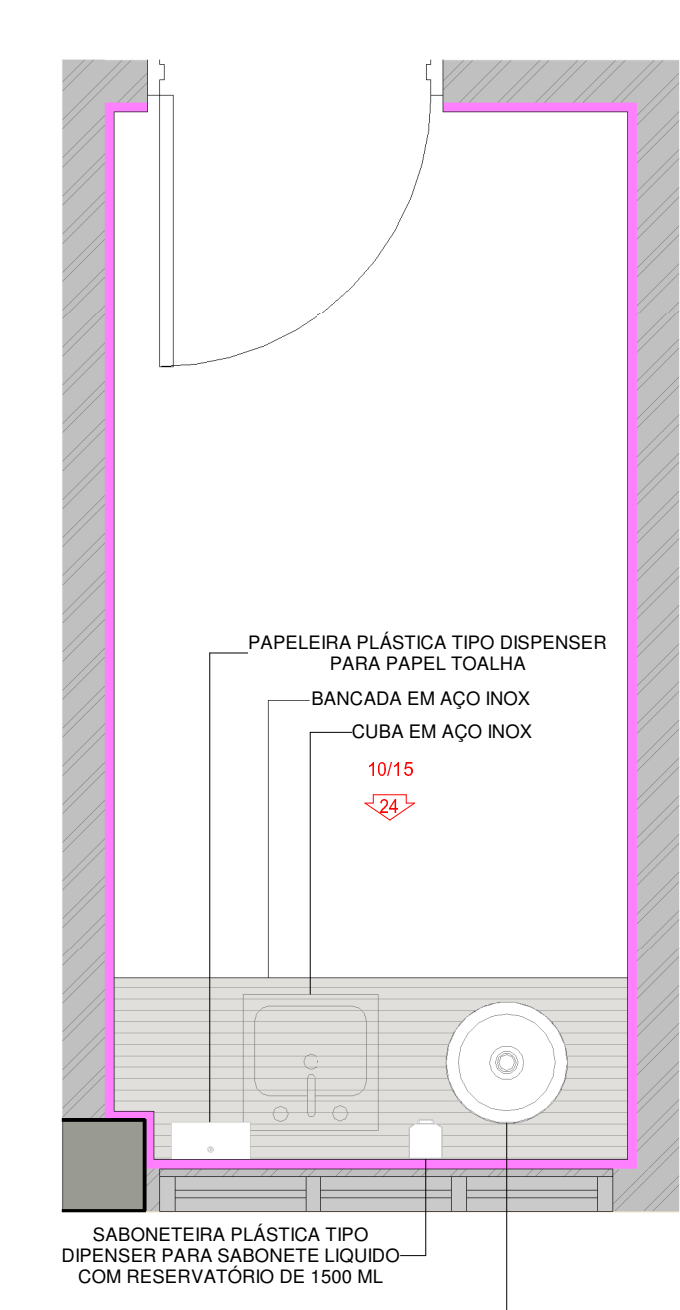
13 DETALHE 3 - I.S FUNCIONÁRIOS  
1:25



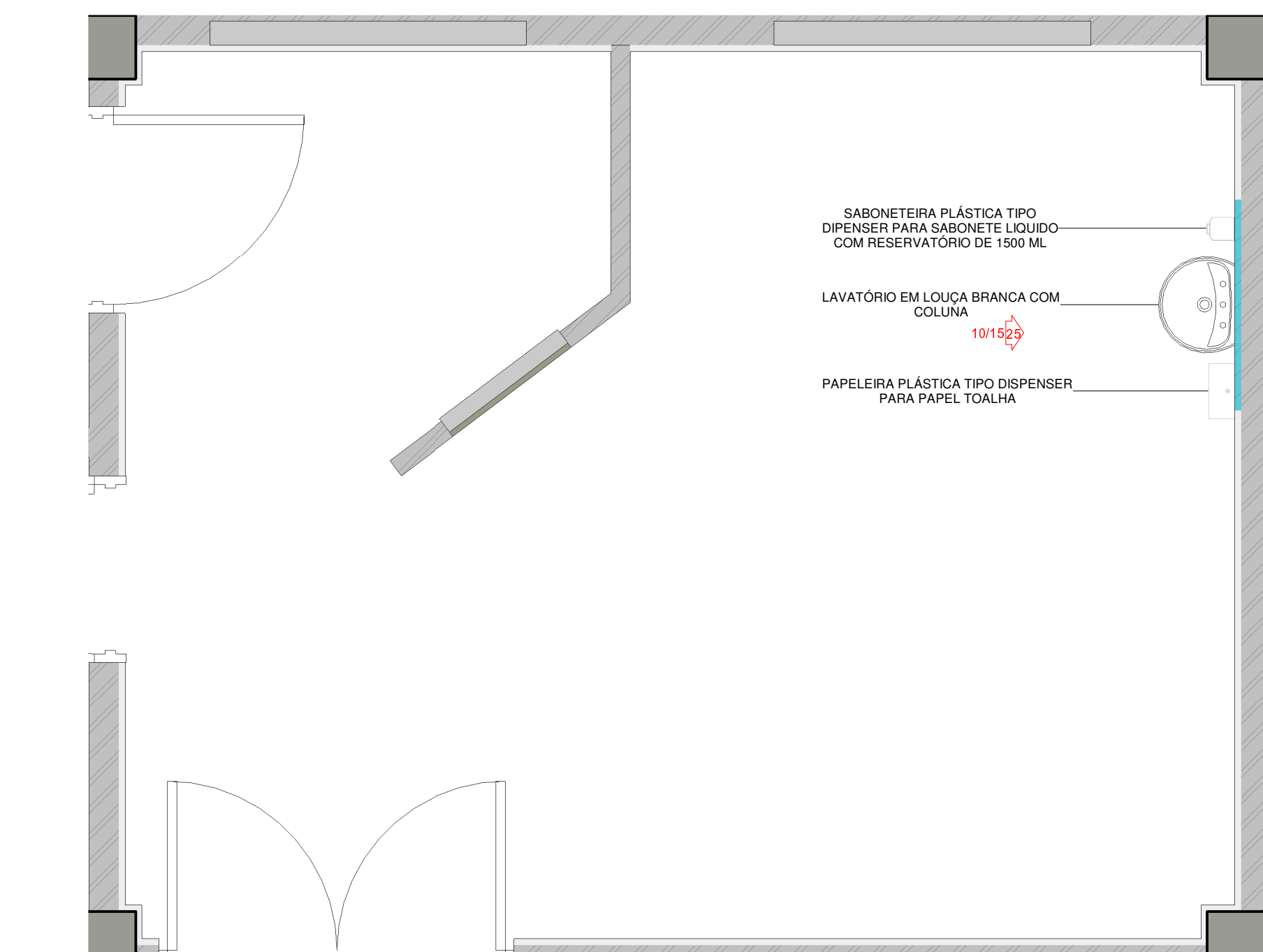
14 DETALHE - EXPURGO  
1:25



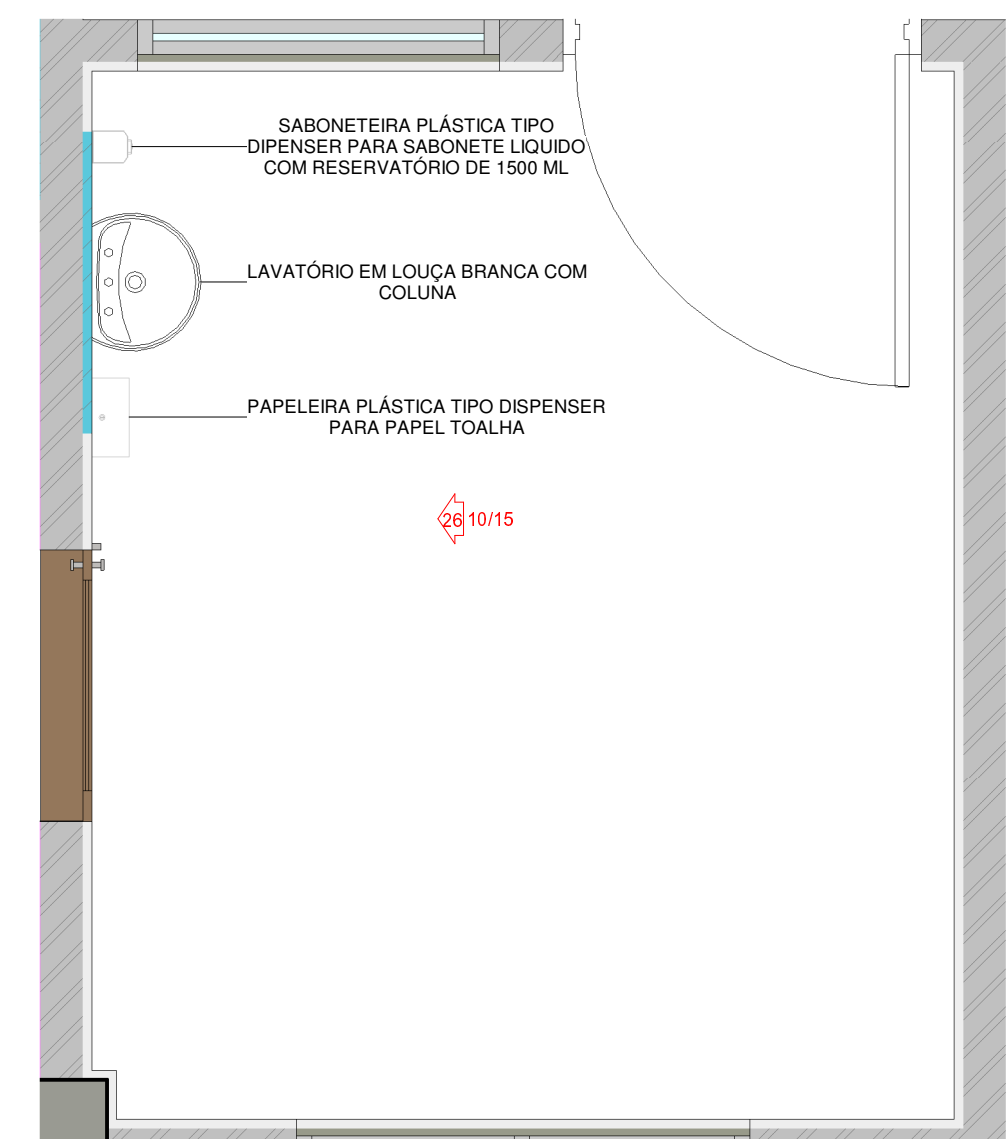
15 DETALHE ATENDIMENTO SOCIAL  
1:25



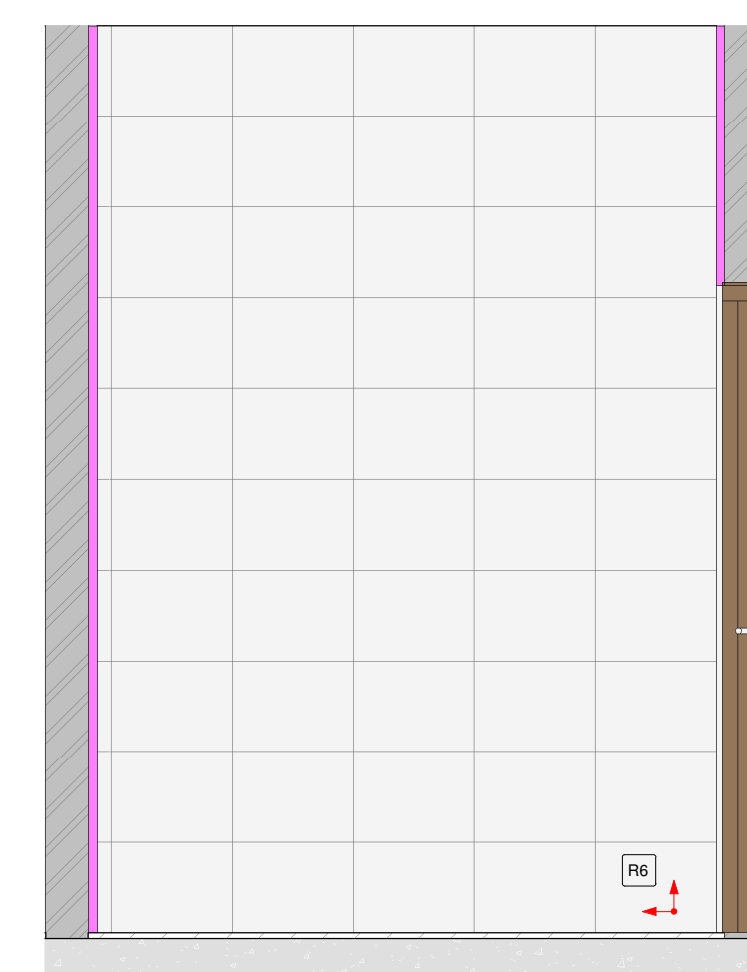
16 DETALHE SALA DE UTILIDADES 02  
1:25



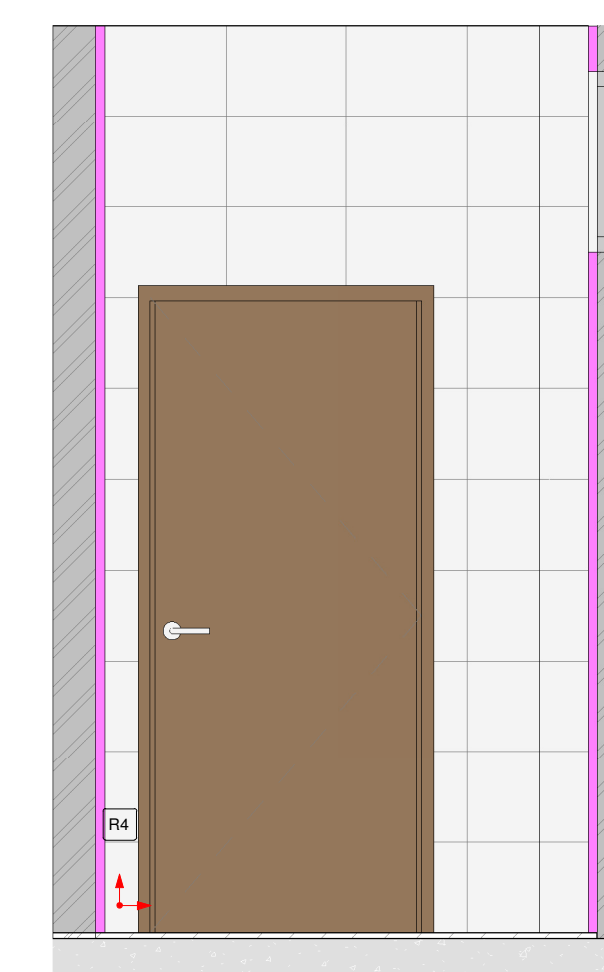
17 DETALHE I.S RADIOLOGIA Copiar 1  
1:25



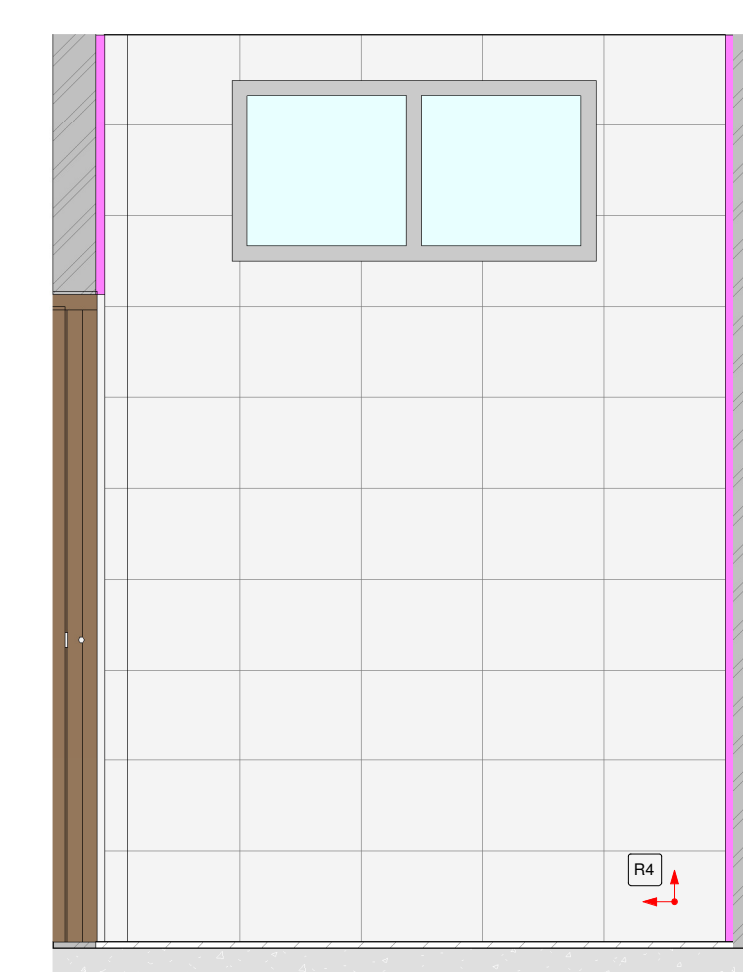
18 DETALHE QUARTO  
1:25



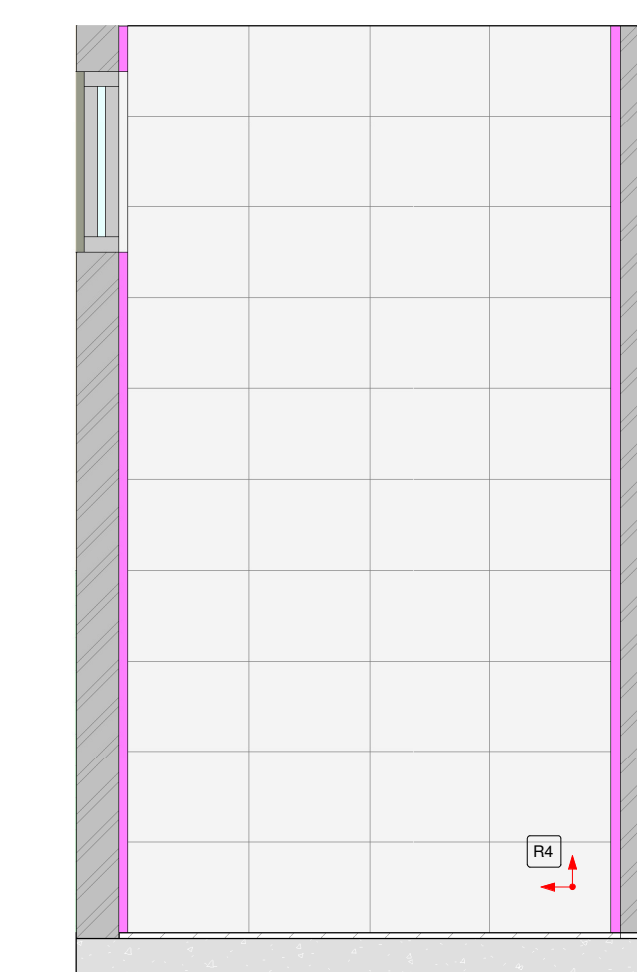
19 VISTA 1 - I.S. PACIENTES GINEC.  
1:25



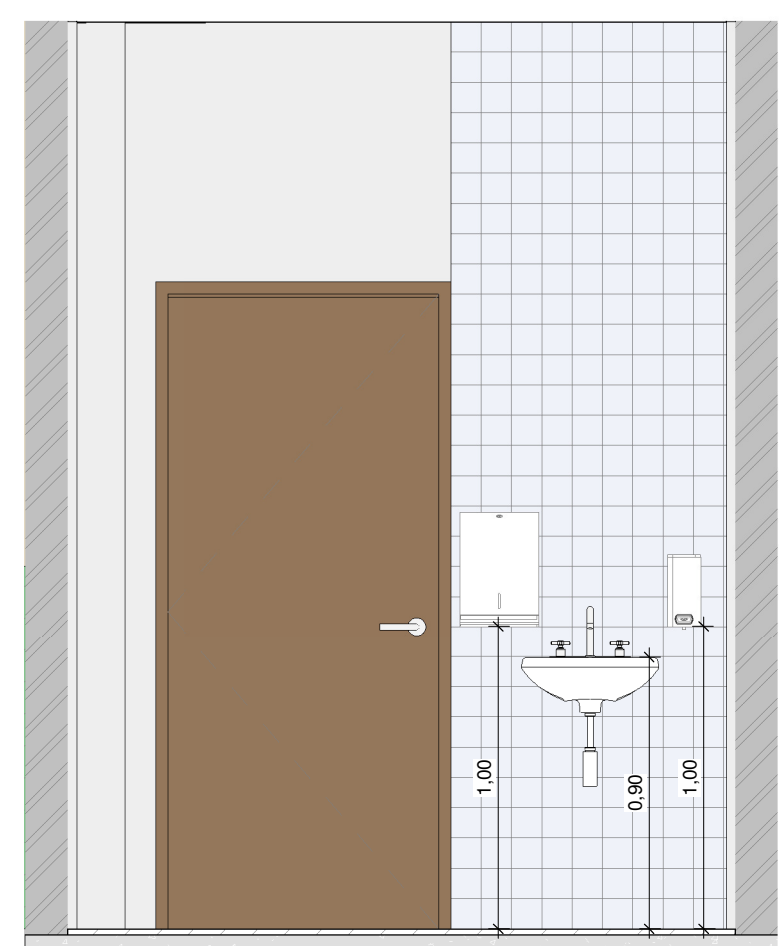
20 VISTA 2 - I.S. PACIENTES GINEC.  
1:25



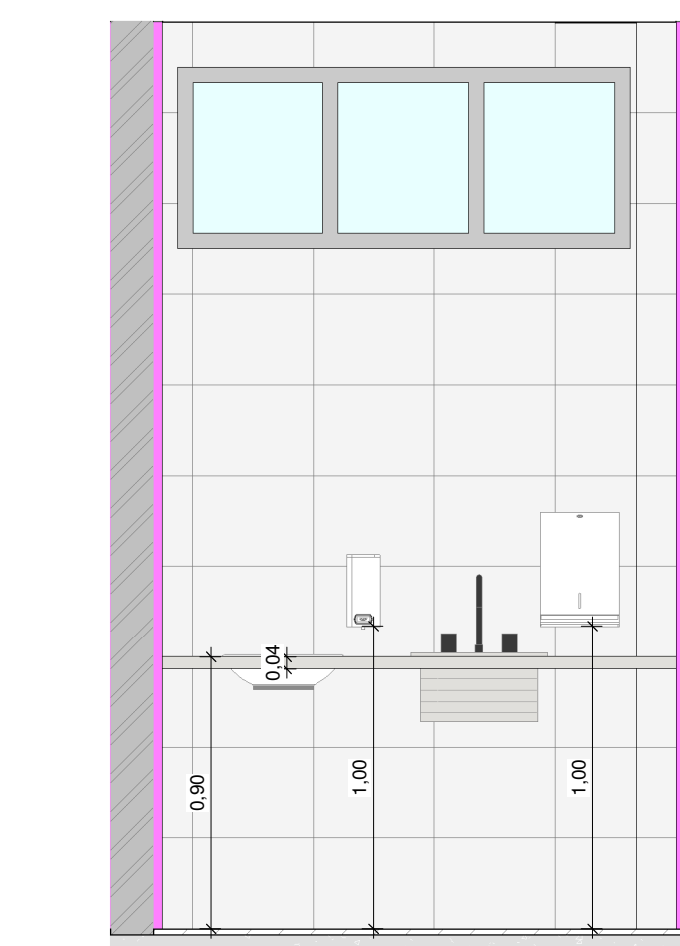
21 VISTA 3 - I.S. PACIENTES GINEC.  
1:25



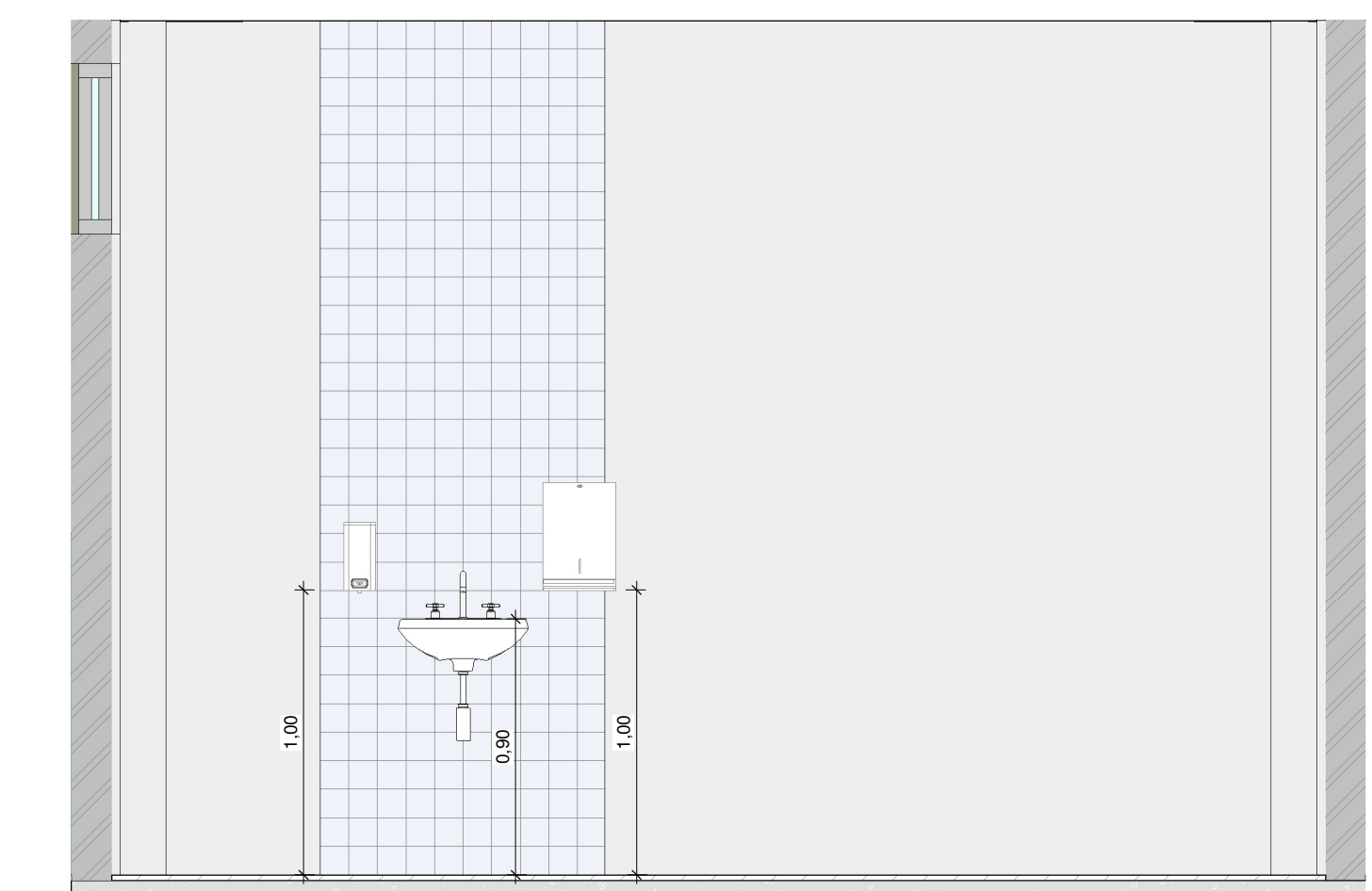
22 VISTA 4 - I.S. PACIENTES GINEC.  
1:25



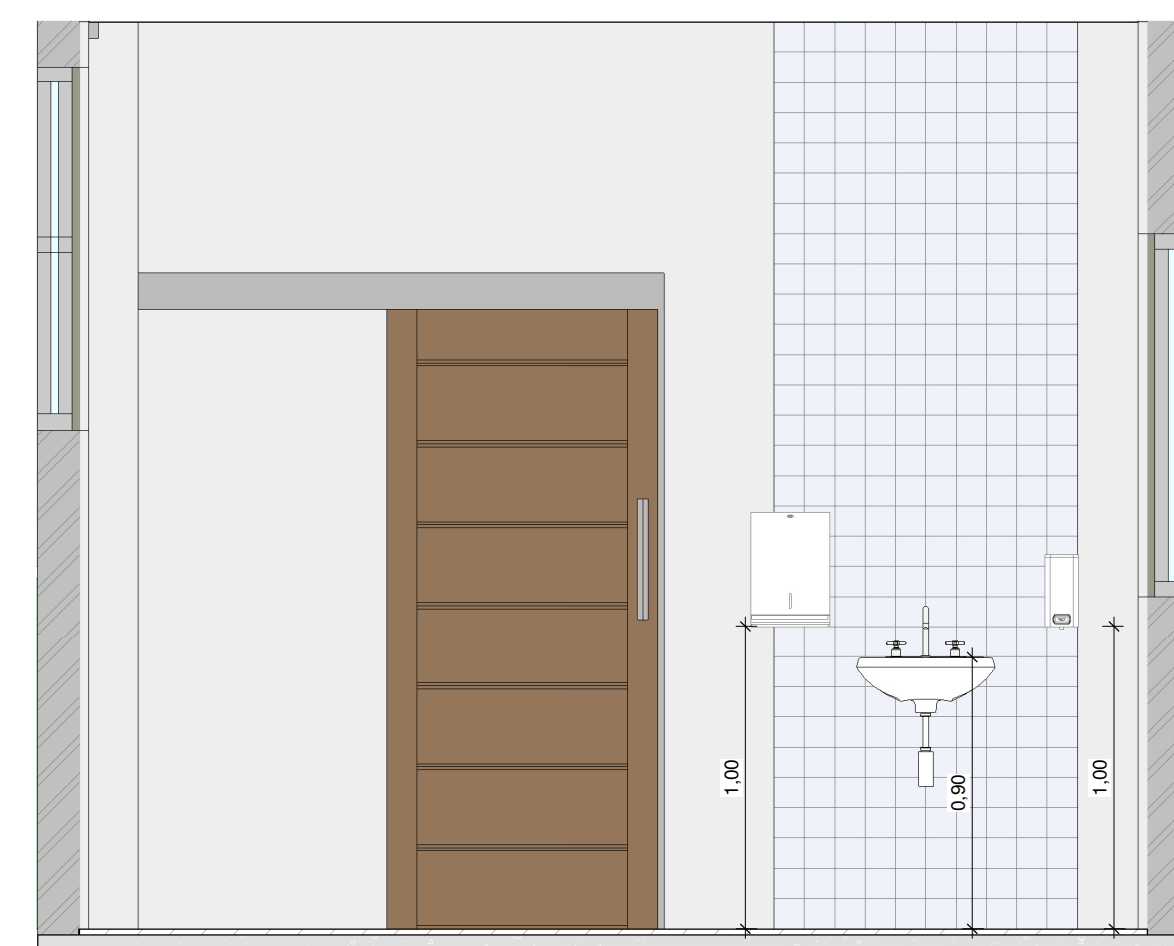
23 DETALHE - ATENDIMENTO SOCIAL  
1:25



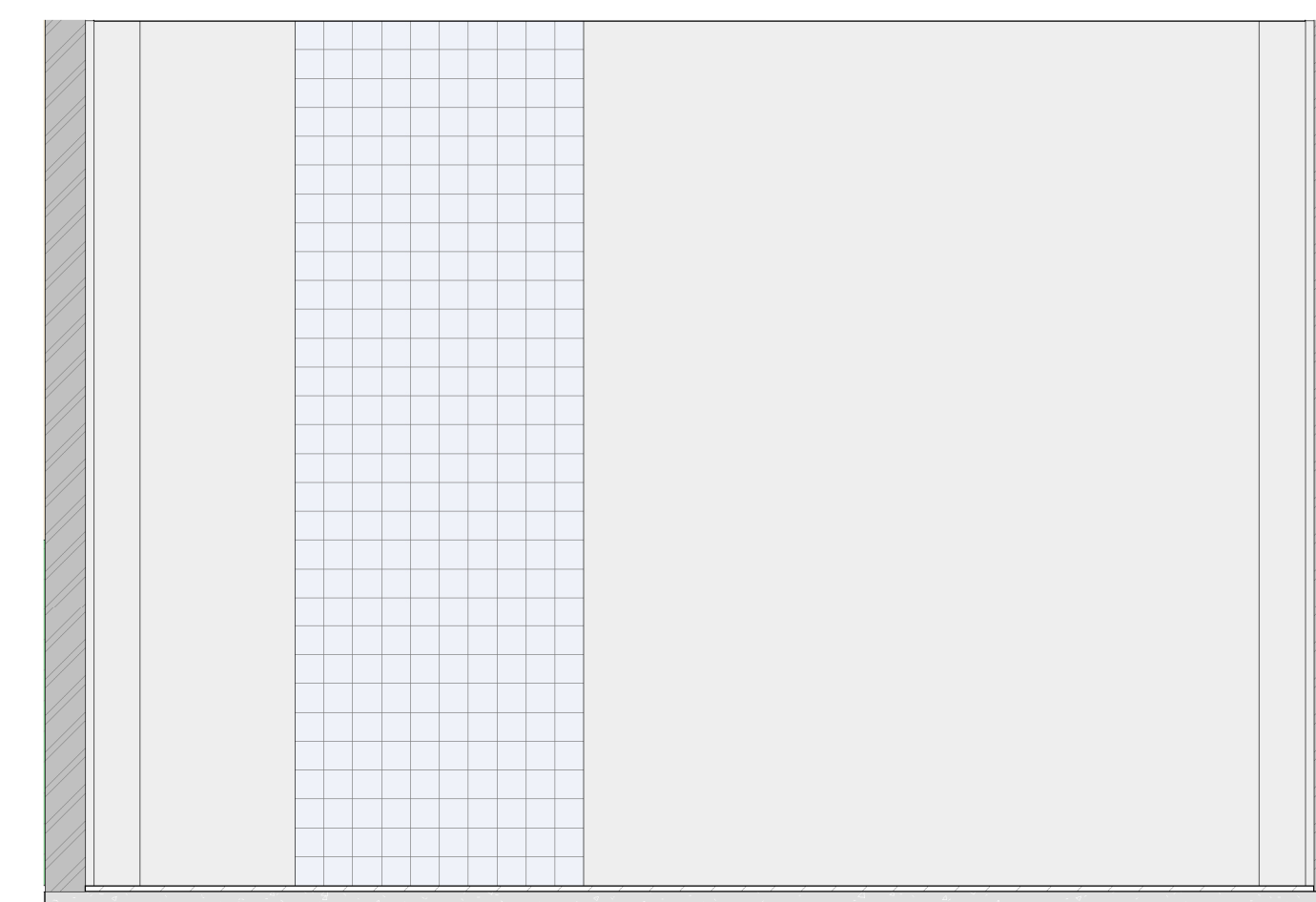
24 DETALHE - SALA DE UTILIDADES 02  
1:25



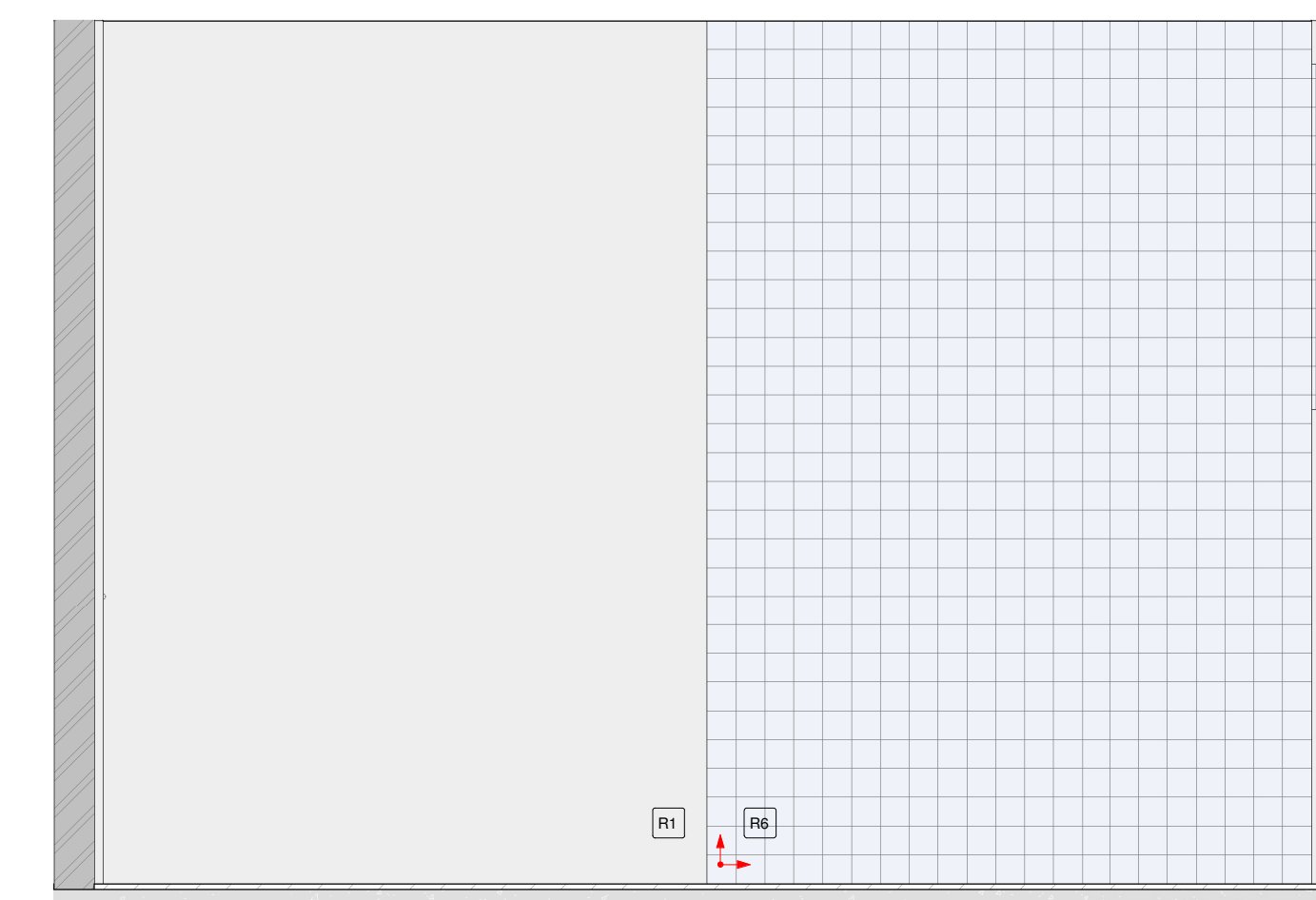
25 DETALHE - SALA DE EXAMES DE RADIOLOGIA  
1:25



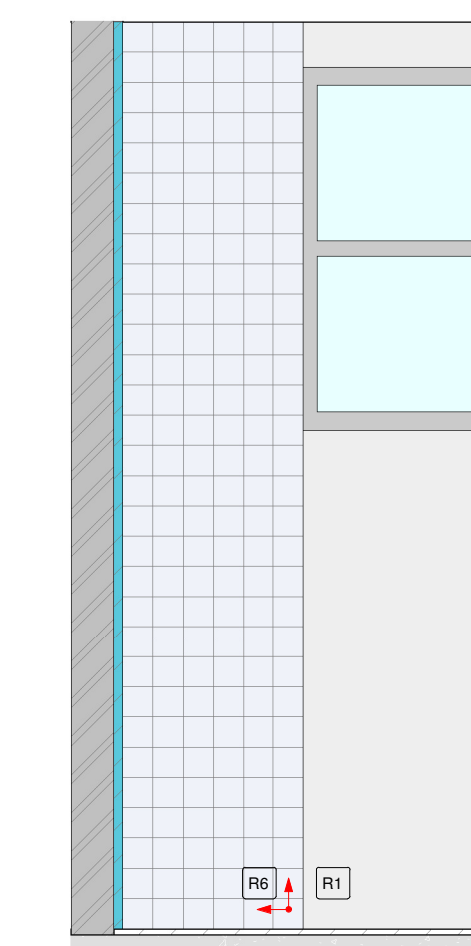
26 DETALHE - QUARTO INDIVIDUAL DE CURTA DURAÇÃO  
1:25



27 VISTA 1 - EXAMES DE RADIOLOGIA  
1:25



28 VISTA 1 - INALAÇÃO  
1:25



29 VISTA 2 - INALAÇÃO  
1:25

NOTAS:  
MEDIDAS DE NÍVEIS EM METROS;  
VERIFICAR DETALHES CONSTRUTIVOS PERTINENTES NO MEMORIAL DESCRITIVO;  
AS ALTERAÇÕES NESTE PROJETO SOMENTE COM AUTORIZAÇÃO EXPRESSA DA  
FISCALIZAÇÃO E DA EMPRESA PROJETISTA.

REFERÊNCIAS:  
- PLANILHA DE QUANTITATIVOS;  
- MEMORIAL DESCRITIVO E ESPECIFICAÇÕES.

REVISÃO	DATA	DESCRIÇÃO	RESP.
REV. 01	20/08/2023	CONFORME SOLICITAÇÃO DA VIOLÊNCIA SANITÁRIA	DAC
REV. 02	28/04/2023	CONFORME SOLICITAÇÃO DA VIOLÊNCIA SANITÁRIA	DAC
REV. 00	31/01/2023	EMISSÃO INICIAL	DAC

**Prefeitura Municipal de Pouso Alegre**

**DAC Engenharia**  
Rua Miguel Viana, nº 81, Sala 12  
Bairro Morro D'Água - Itaipava / MG  
CEP: 37500-000  
Tel: (35) 3625-8846  
www.dacengharia.com.br

PROJETO: **CONSTRUÇÃO DA UNIDADE DE PRONTO ATENDIMENTO**  
RUA PIRANGUINHO, B. SÃO JOÃO  
POUSO ALEGRE - MINAS GERAIS

RESPONSÁVEL TÉCNICO: **ALDINO CAETANO FERREIRA**  
ENGR. CIVIL FLÁVIA BARBOSA - CREA MG-167.845/D

DISCIPLINA: **ARQUITETÔNICO**  
FASE DO PROJETO: **EXECUTIVO**  
FOLHA Nº: **10/15**

DATA: 31/01/2023  
SITUAÇÃO: INDICADA  
REVISÃO: REV.02  
PROJETO: DAC-PMPA-UPA-PE-ARG-R02-RVT