

ELEMENTO	AÇO	N	DIAM (mm)	QUANT	C.UNIT (cm)	C.TOTAL (cm)
VT115	CA60	1	5.0	36	135	4860
	CA60	2	5.0	2	120	240
	CA50	3	10.0	2	532	1064
	CA50	4	12.5	2	16	32
	CA50	5	12.5	2	546	1092
VT122	CA60	1	5.0	24	135	3240
	CA60	2	5.0	2	120	240
	CA50	3	10.0	2	16	32
	CA50	4	10.0	2	356	712
	CA50	5	10.0	2	371	742
VT123	CA60	1	5.0	26	135	3510
	CA60	2	5.0	2	120	240
	CA50	3	10.0	2	16	32
	CA50	4	10.0	2	386	772
	CA50	5	10.0	2	401	802
VT129	CA60	1	5.0	26	135	3510
	CA60	2	5.0	2	120	240
	CA50	3	10.0	2	16	32
	CA50	4	10.0	2	386	772
	CA50	5	10.0	2	401	802
VT130	CA60	1	5.0	50	145	7250
	CA60	2	5.0	2	125	250
	CA50	3	10.0	2	486	972
	CA50	4	12.5	2	21	42
	CA50	5	12.5	2	500	1000
VT132	CA60	1	5.0	24	135	3240
	CA60	2	5.0	2	120	240
	CA50	3	10.0	2	16	32
	CA50	4	10.0	2	356	712
	CA50	5	10.0	2	371	742
VT134	CA60	1	5.0	13	135	1755
	CA60	2	5.0	2	120	240
	CA50	3	10.0	2	16	32
	CA50	4	10.0	2	181	362
	CA50	5	10.0	2	196	392
VT136	CA60	1	5.0	28	135	3780
	CA60	2	5.0	2	120	240
	CA50	3	10.0	2	16	32
	CA50	4	10.0	2	412	824
	CA50	5	10.0	2	427	854
VT138	CA60	1	5.0	49	145	7105
	CA60	2	5.0	2	125	250
	CA50	3	10.0	2	486	972
	CA50	4	12.5	2	21	42
	CA50	5	12.5	2	500	1000
VT140	CA60	1	5.0	23	135	3105
	CA60	2	5.0	2	120	240
	CA50	3	10.0	2	16	32
	CA50	4	10.0	2	334	668
	CA50	5	10.0	2	349	698
VT141	CA60	1	5.0	23	135	3105
	CA60	2	5.0	2	120	240
	CA50	3	10.0	2	16	32
	CA50	4	10.0	2	334	668
	CA50	5	10.0	2	349	698
VT142	CA60	1	5.0	24	135	3240
	CA60	2	5.0	2	120	240
	CA50	3	10.0	2	16	32
	CA50	4	10.0	2	356	712
	CA50	5	10.0	2	371	742
VT143	CA60	1	5.0	13	135	1755
	CA60	2	5.0	2	120	240
	CA50	3	10.0	2	16	32
	CA50	4	10.0	2	181	362
	CA50	5	10.0	2	196	392
VT144	CA60	1	5.0	14	135	1890
	CA60	2	5.0	2	120	240
	CA50	3	10.0	2	16	32
	CA50	4	10.0	2	198	396
	CA50	5	10.0	2	213	426

RESUMO DO AÇO

AÇO	DIAM (mm)	C.TOTAL (m)	PESO + 10% (kg)
CA50	10.0	176.1	119.4
CA60	12.5	32.1	34.3
CA60	5.0	547.3	92.8
PESO TOTAL (kg)			
CA50		153.4	
CA60		92.8	

Volume de concreto (C-30) = 5.29 m³

REV.	DATA	DESCRIÇÃO	RESP.
REV. 02	07/07/23	CONFORME SOLICITAÇÕES DA VIGILÂNCIA SANITÁRIA	DAC
REV. 01	28/04/23	CONFORME SOLICITAÇÕES DA VIGILÂNCIA SANITÁRIA	DAC
REV. 00	31/01/23	EMISSÃO INICIAL	DAC



DAC engenharia
Rua Miguel Vianna, nº 81, 2º Andar
Bairro Morro Chic
CEP: 37520-000 - Itaipaciú / MG
Tel: (35) 3623-8666
www.dacengenharia.com.br

COORDENAÇÃO: ALOÍSIO CAETANO FERREIRA
RESPONSÁVEL TÉCNICO E AUTOR: ENG. CIVIL FLÁVIA BARBOSA CREA MG-18734/20

EMPRESAMENTO: CONSTRUÇÃO DA UNIDADE DE PRONTO ATENDIMENTO

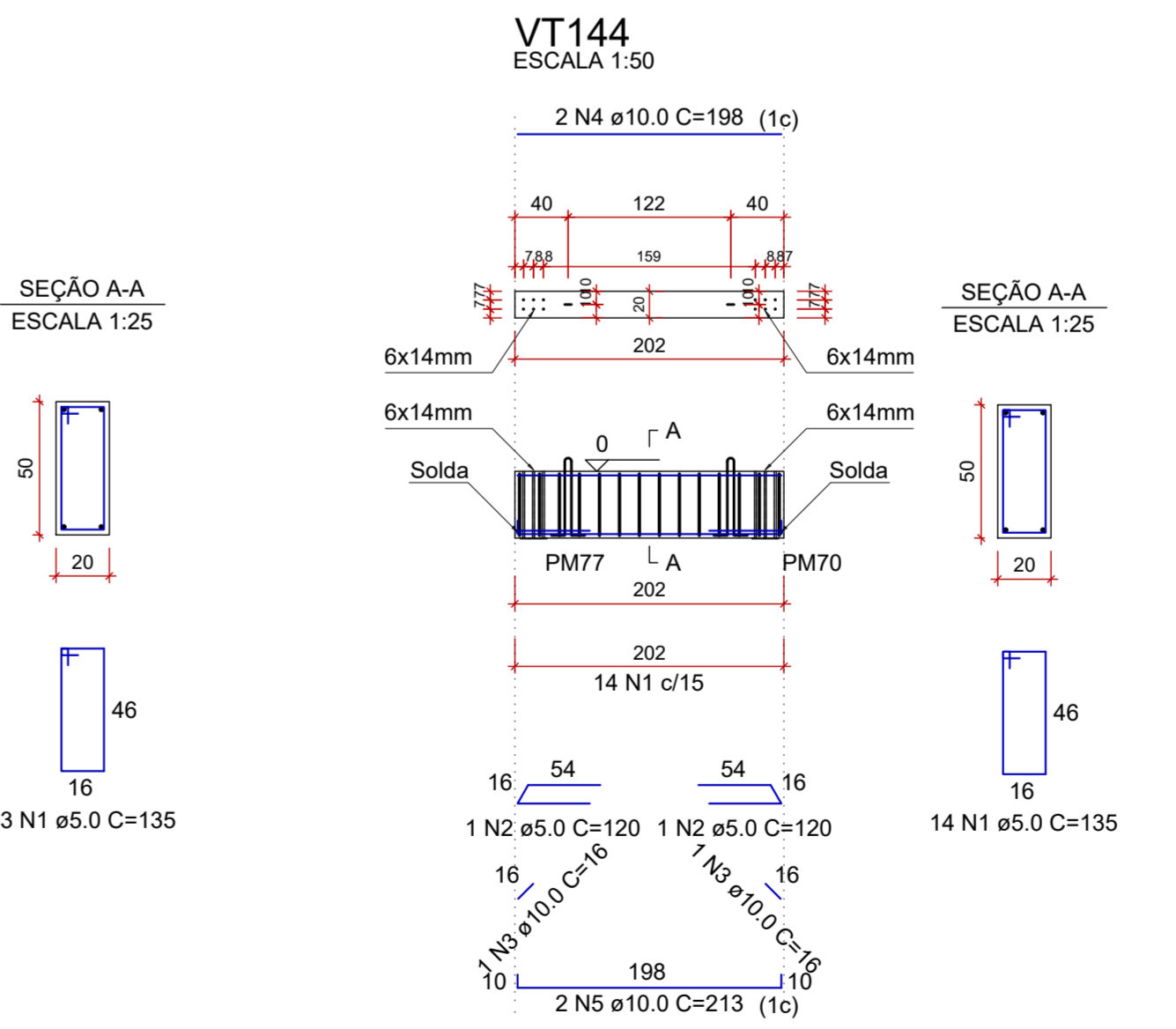
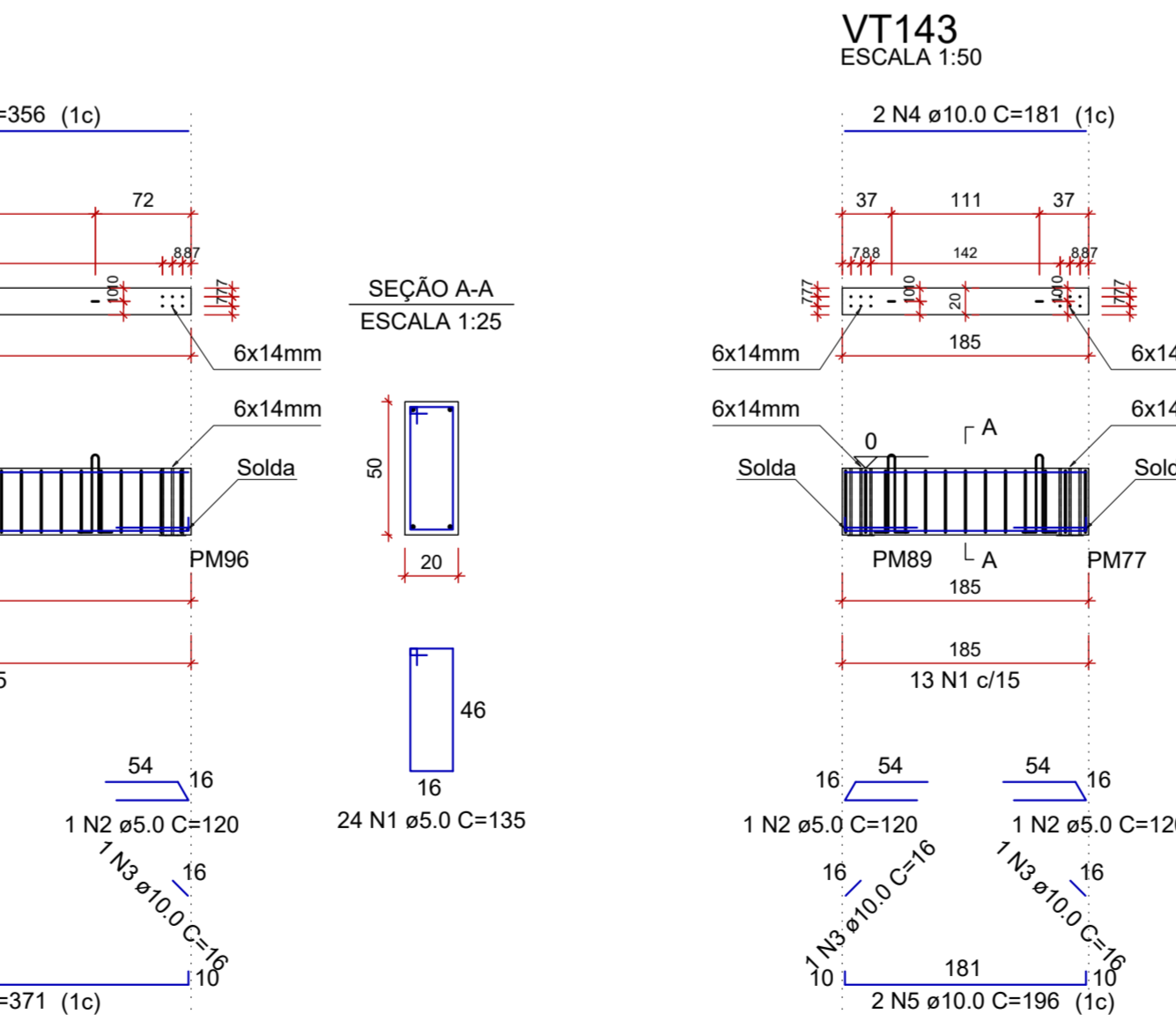
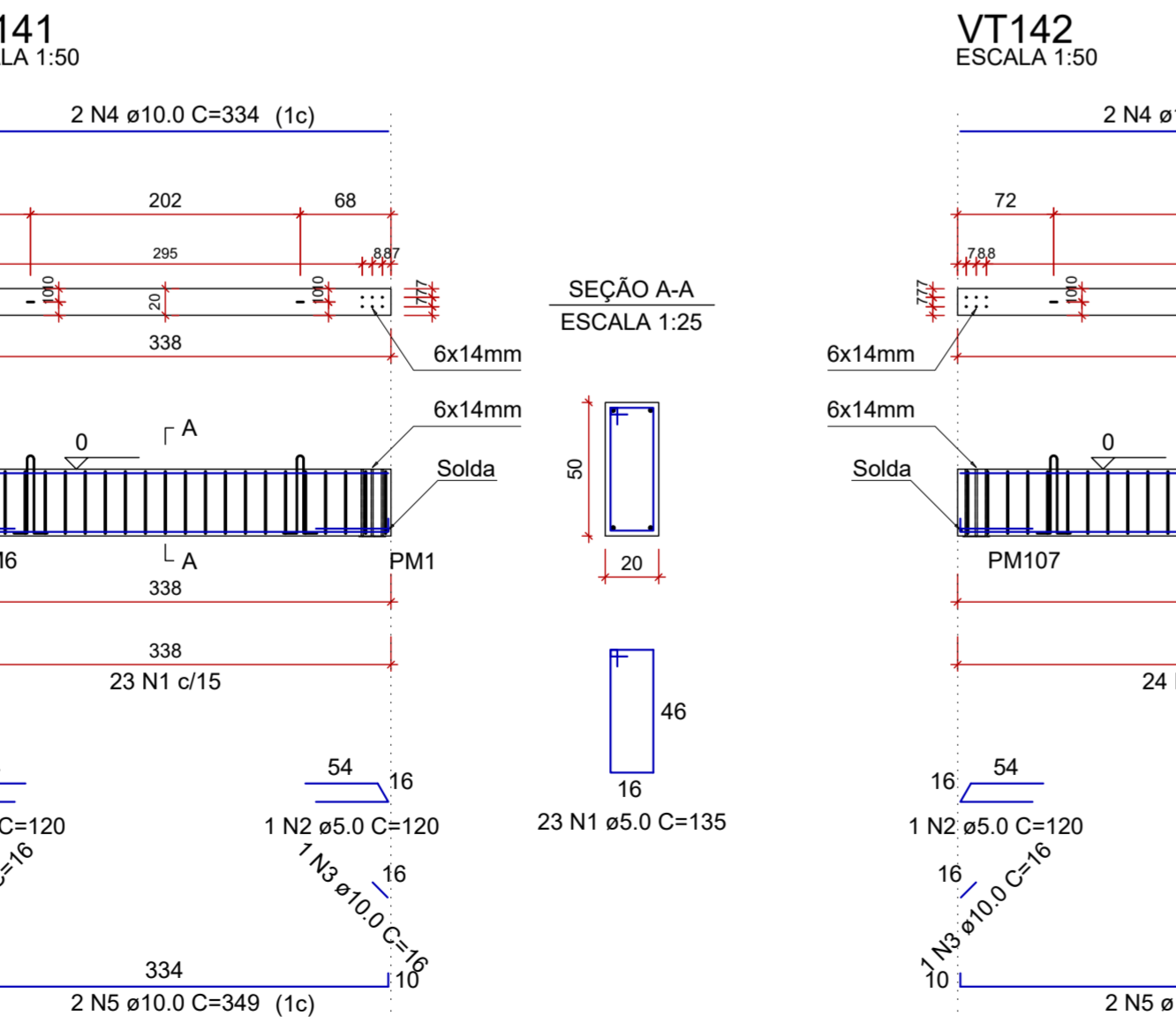
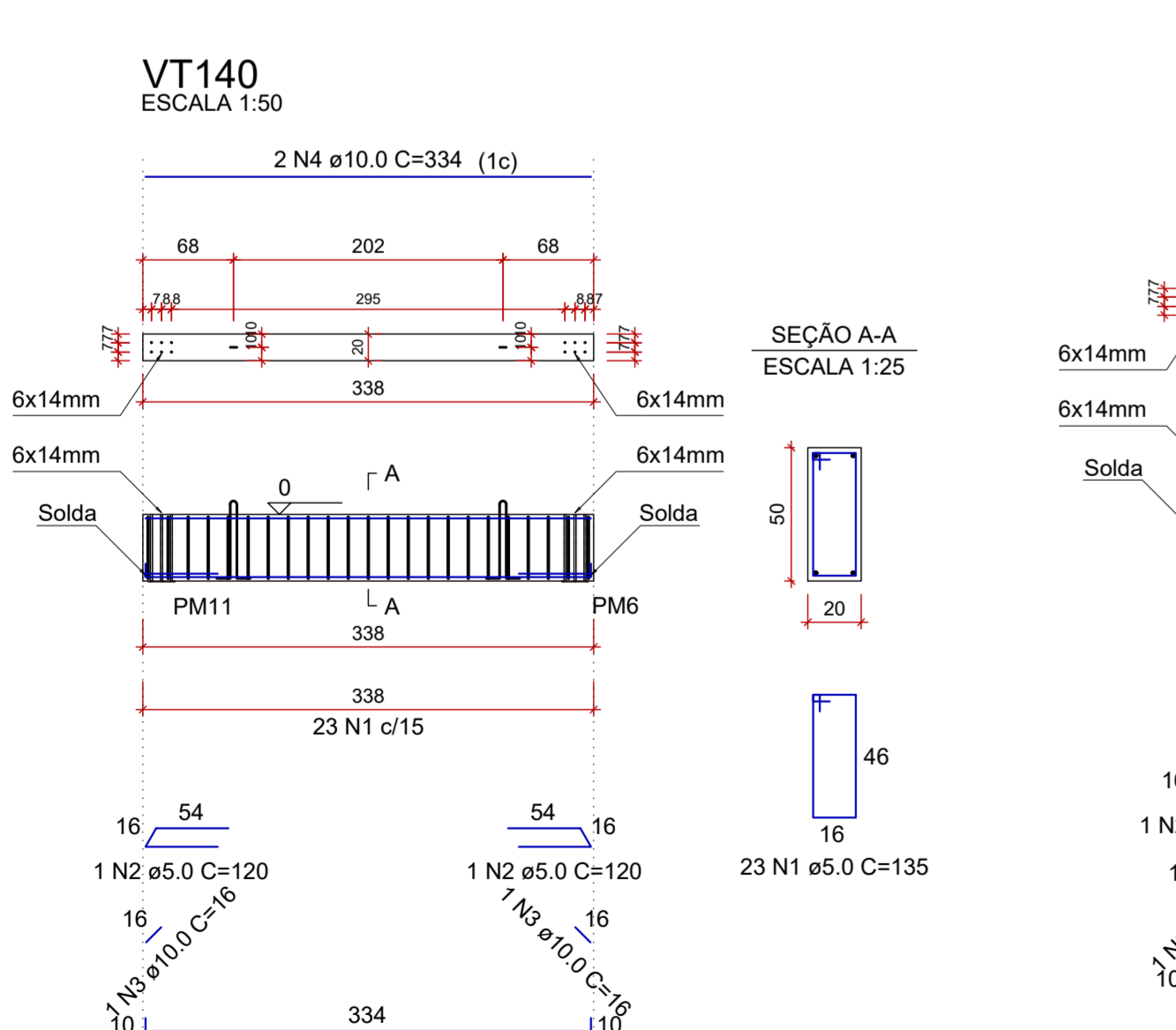
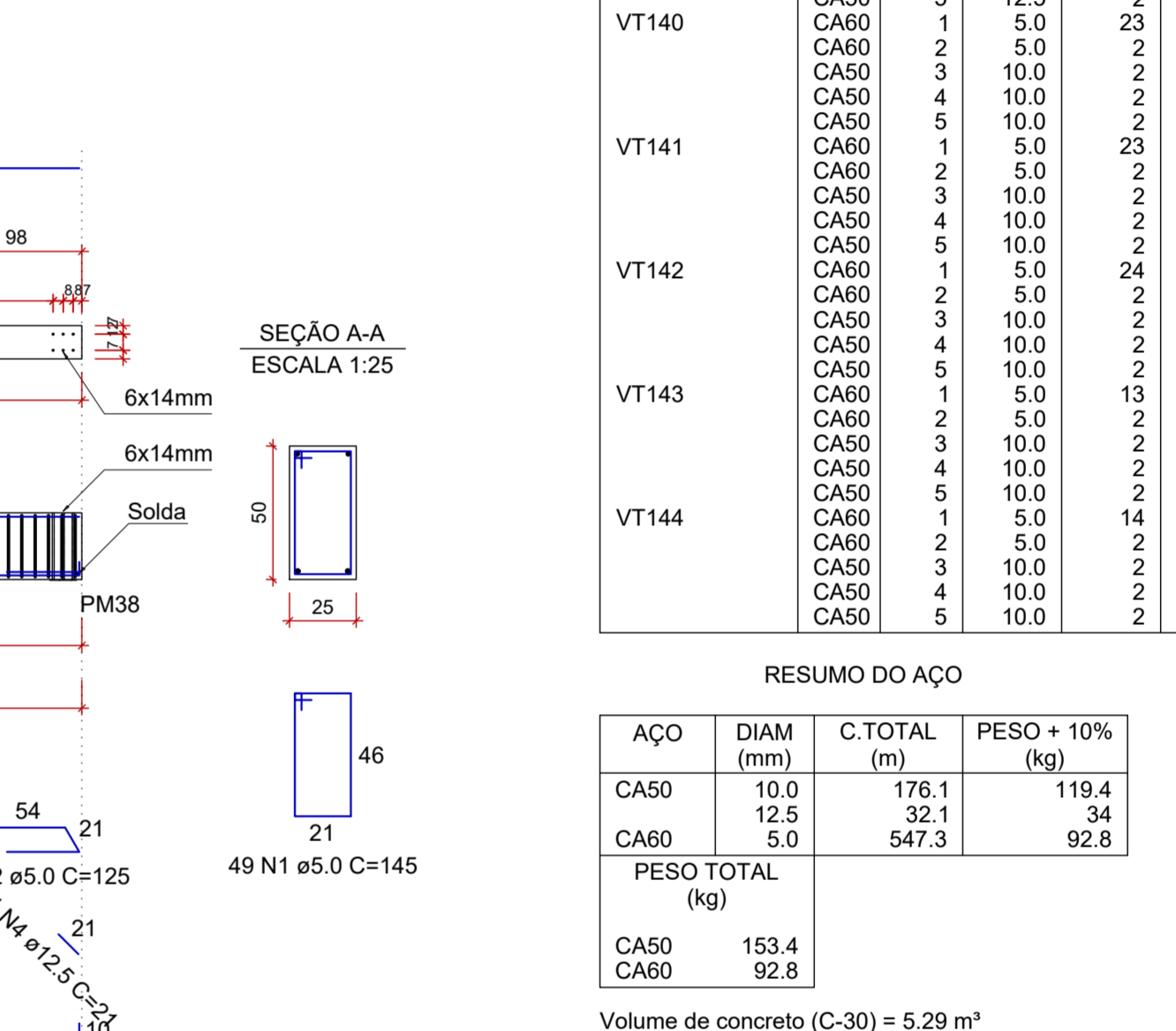
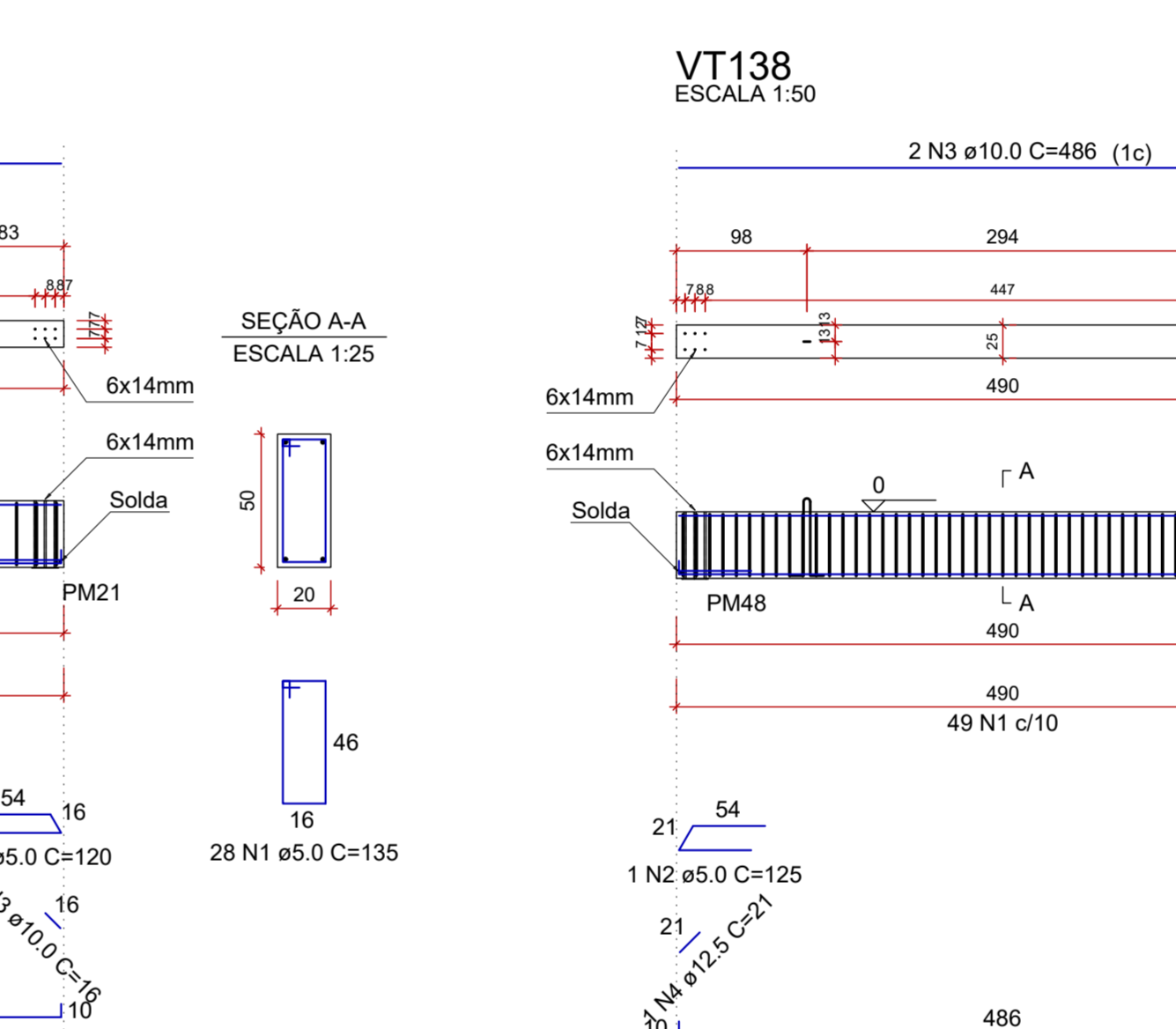
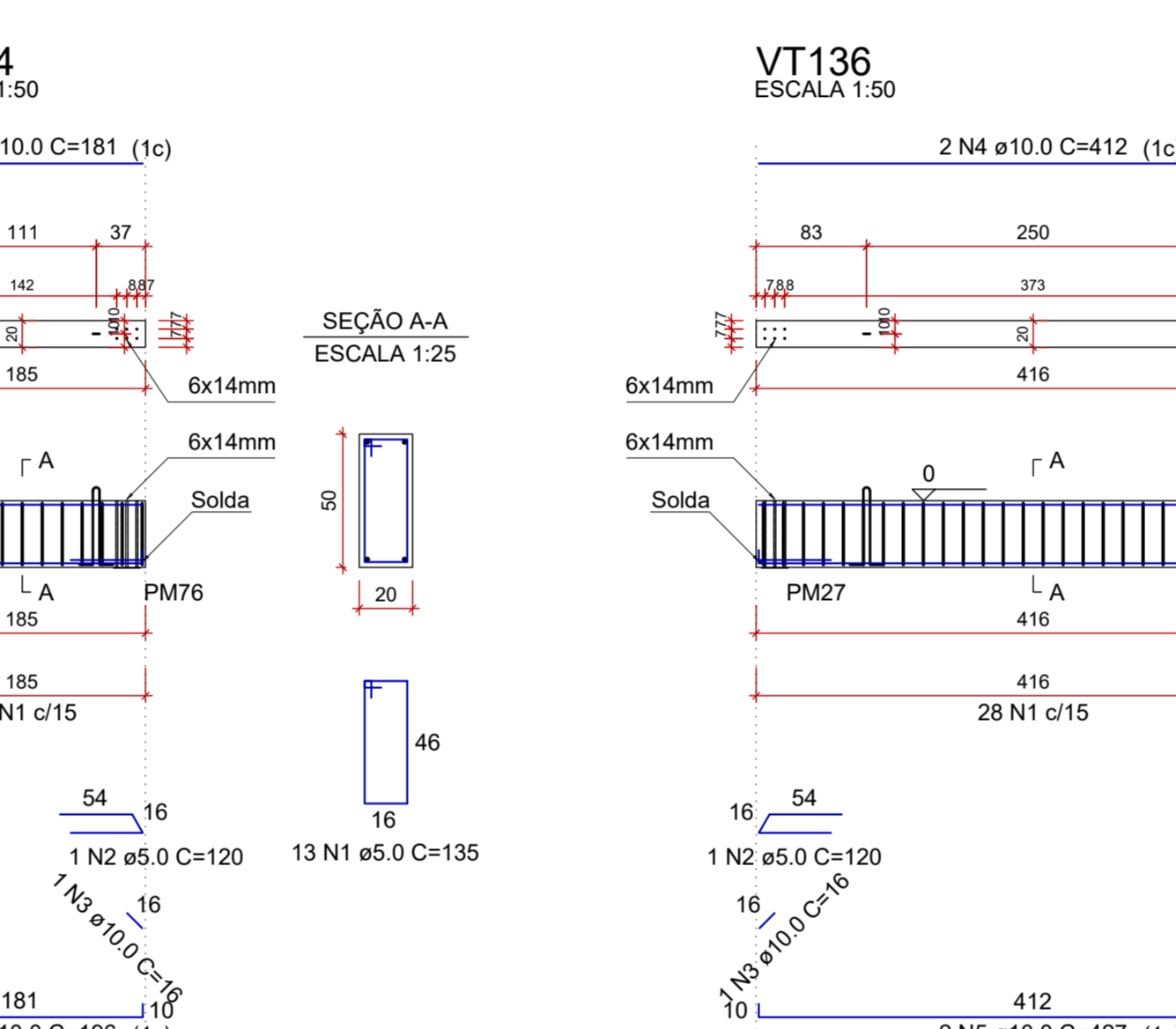
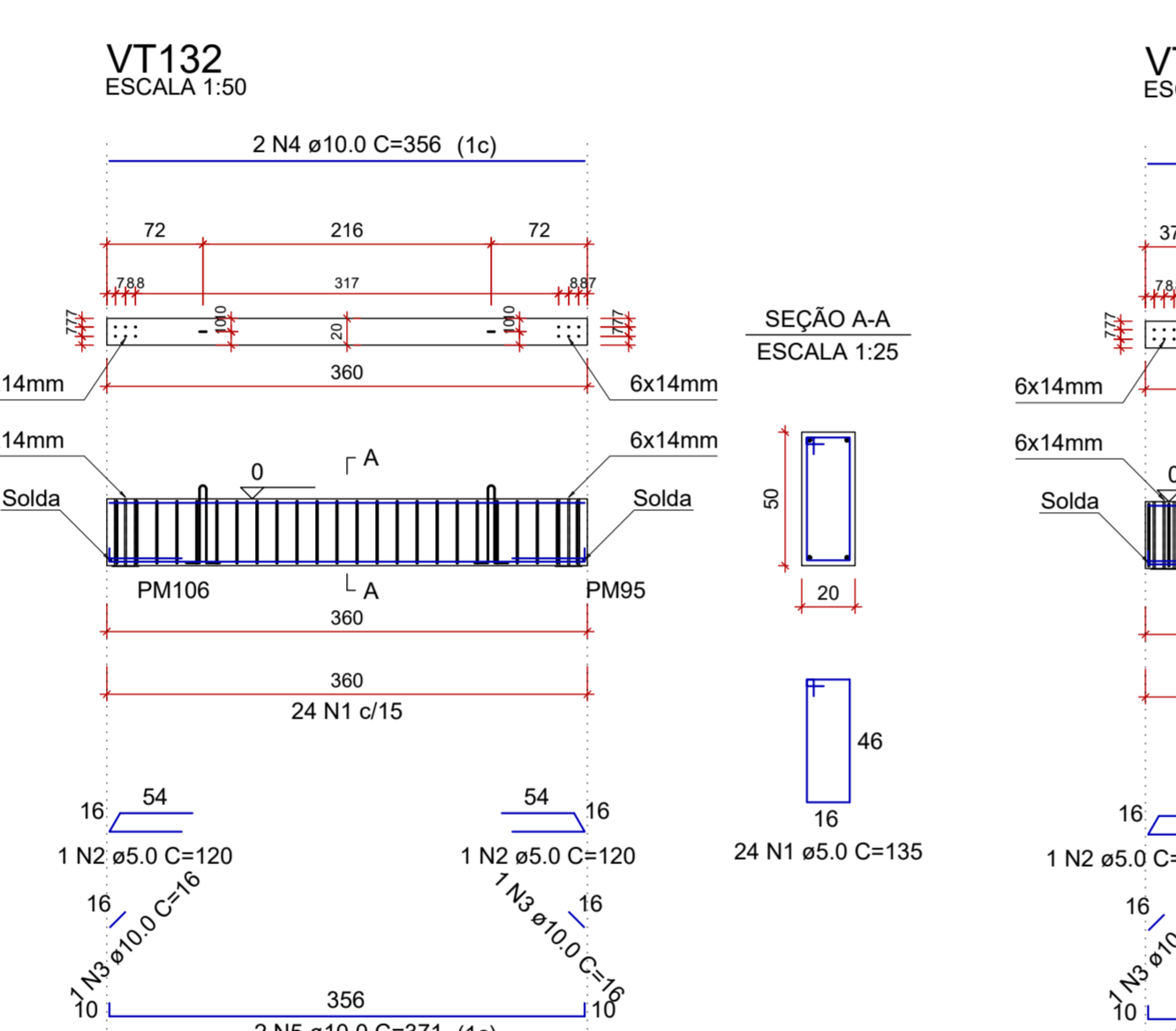
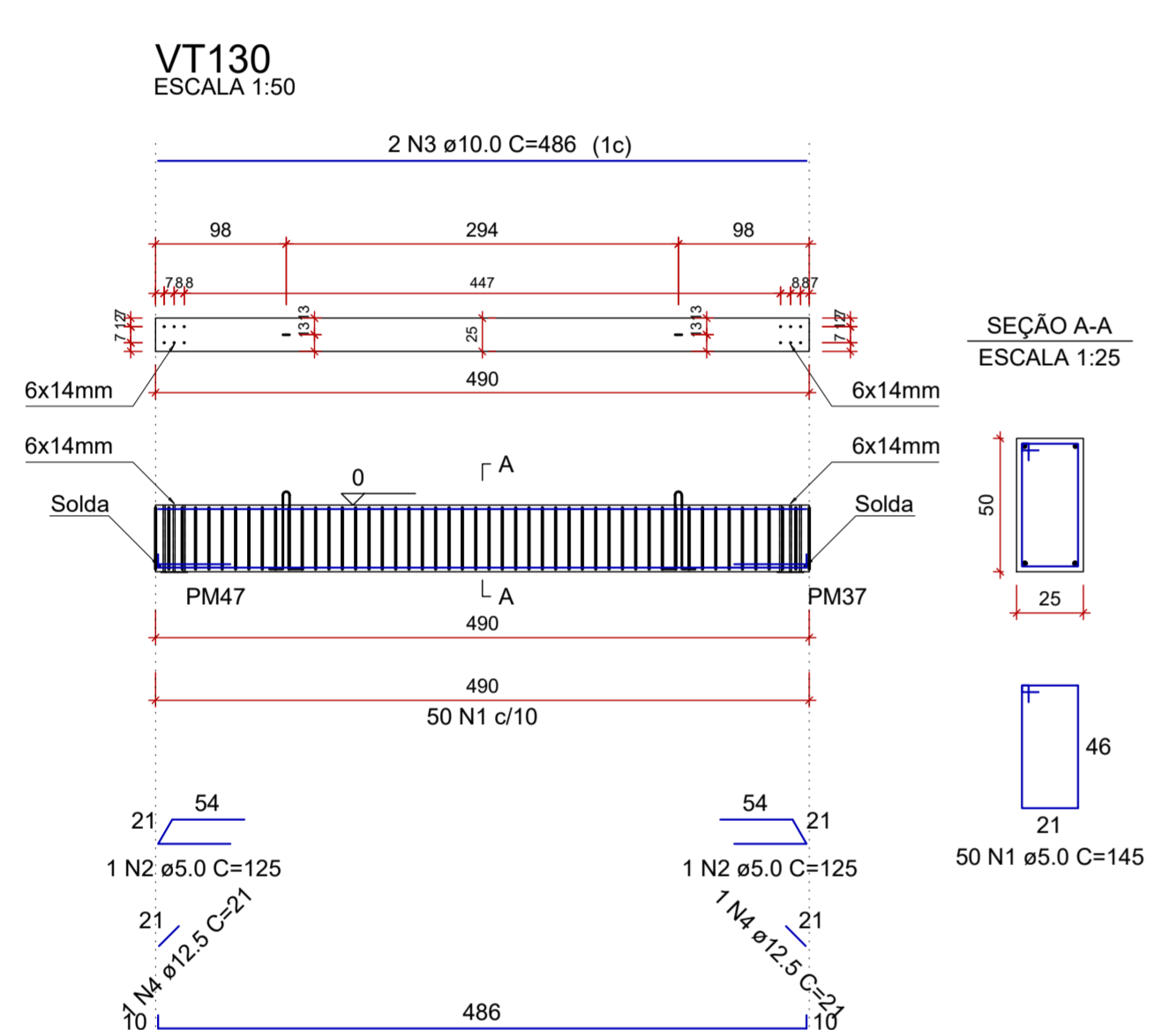
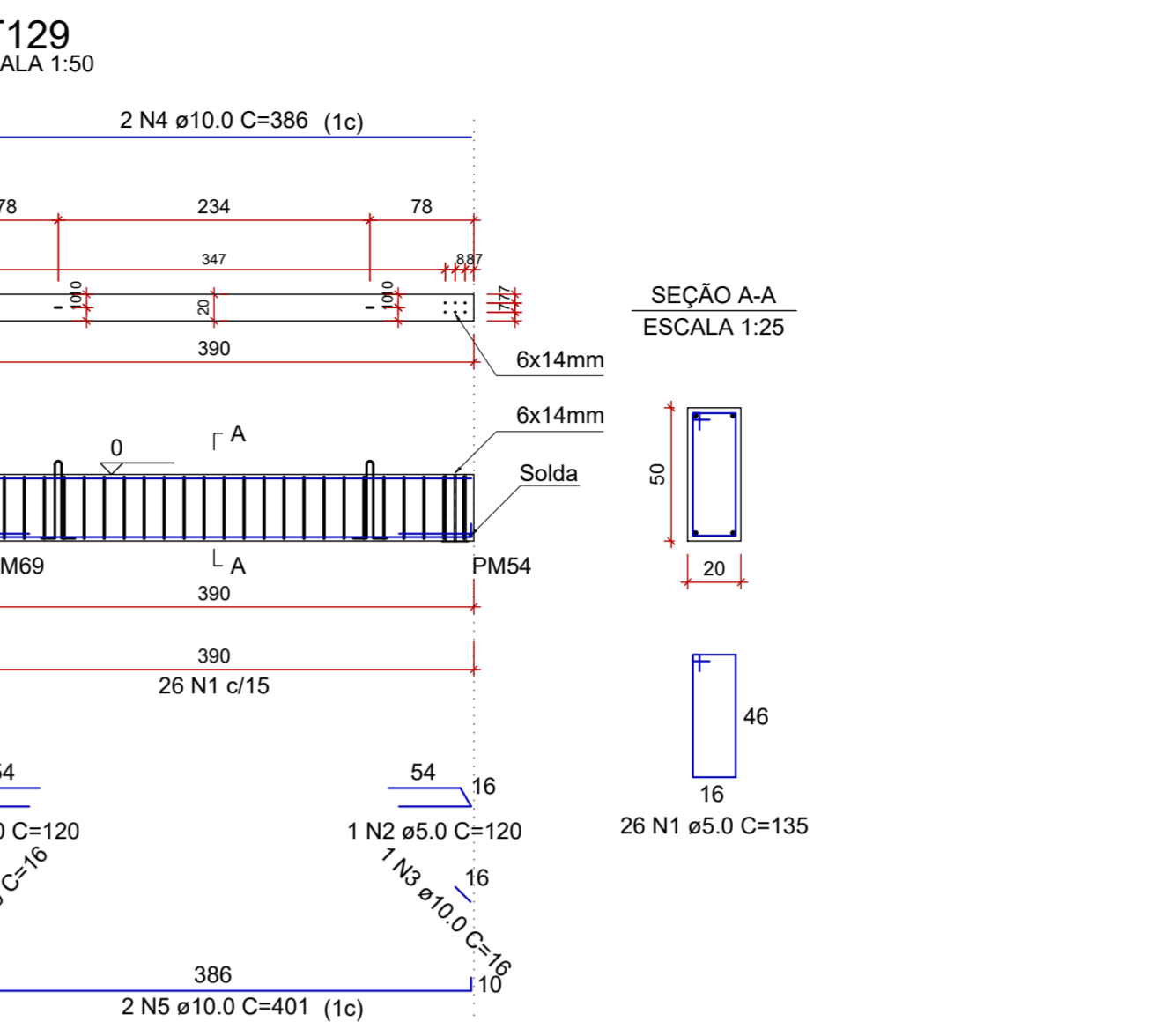
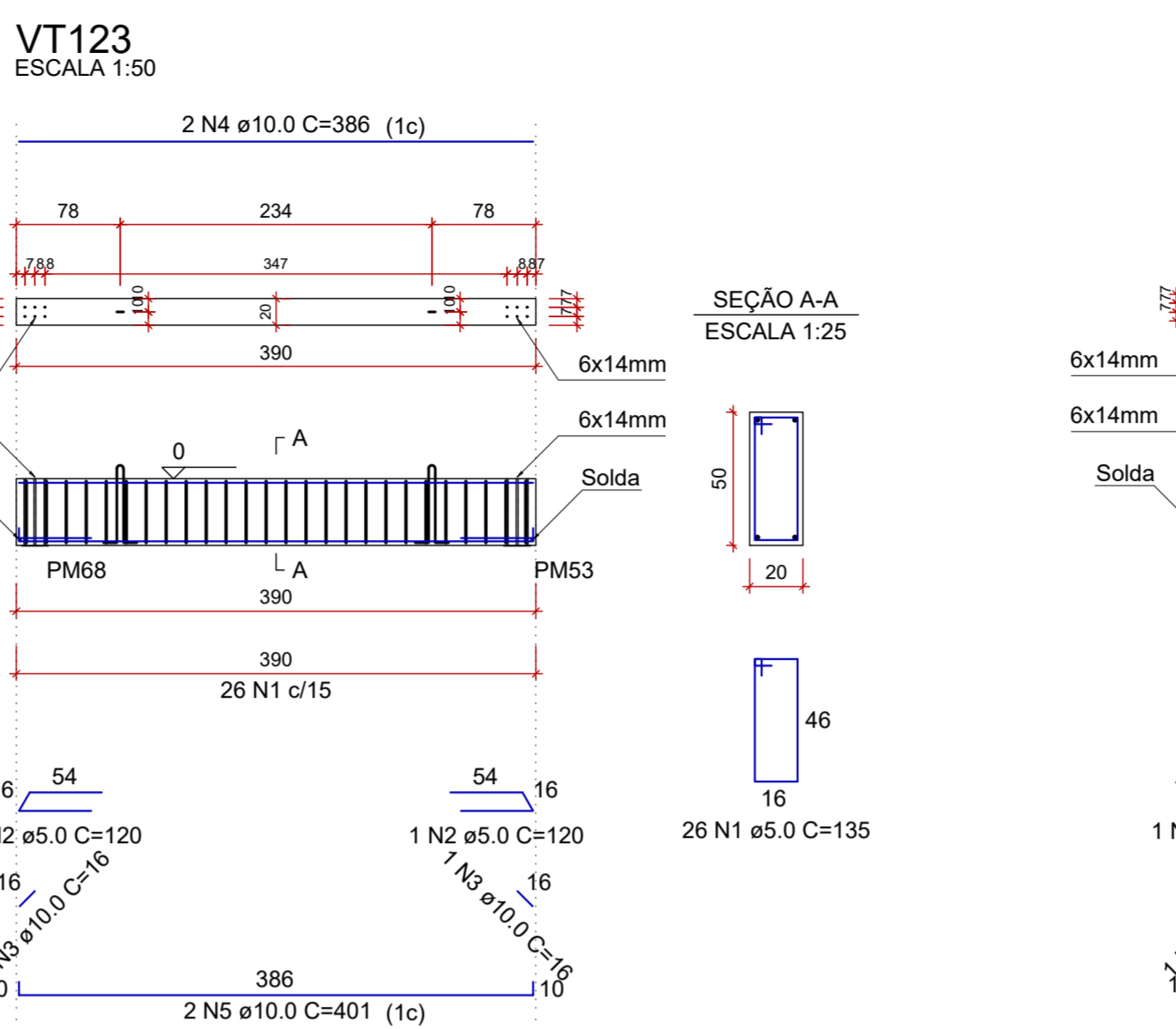
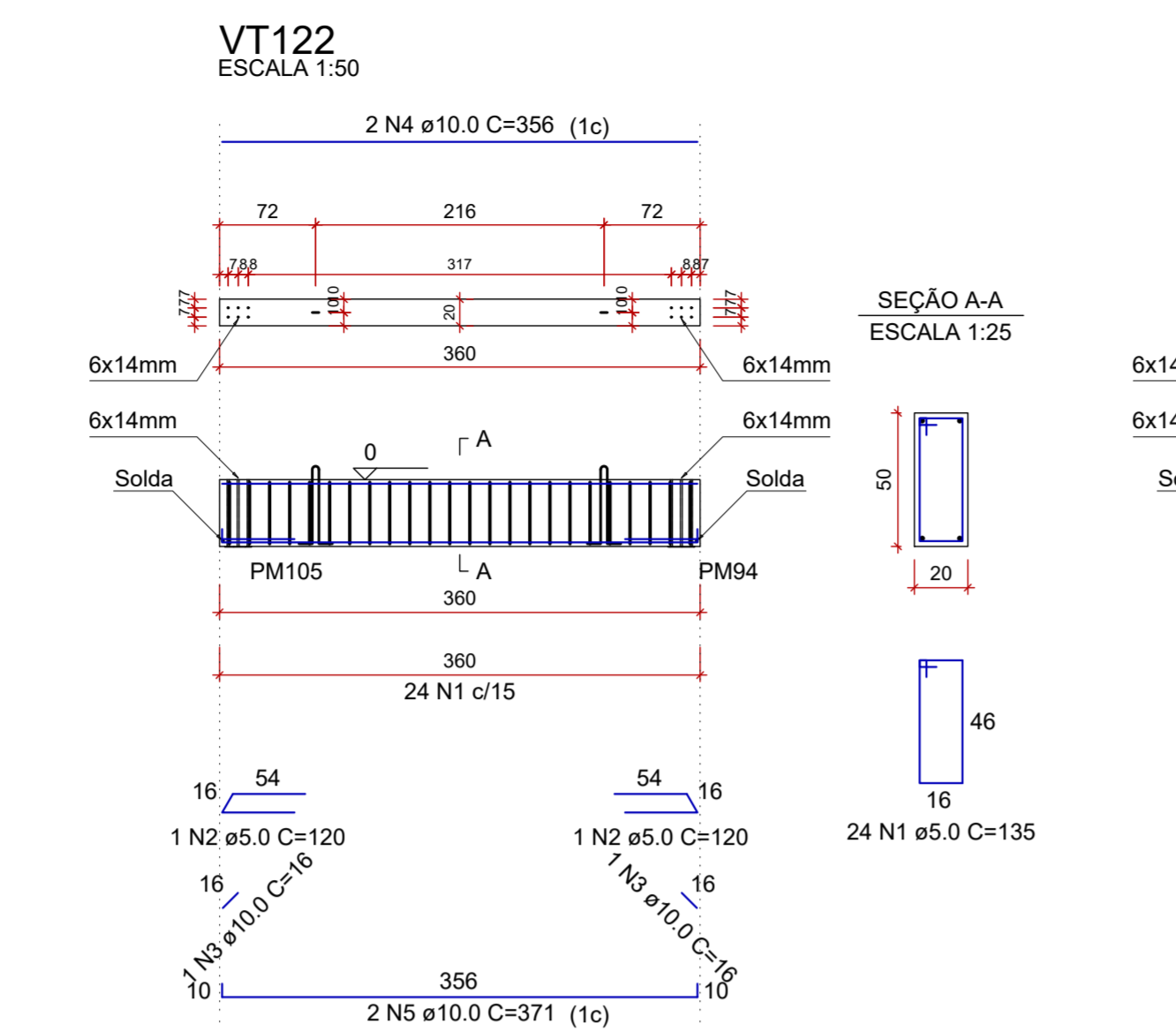
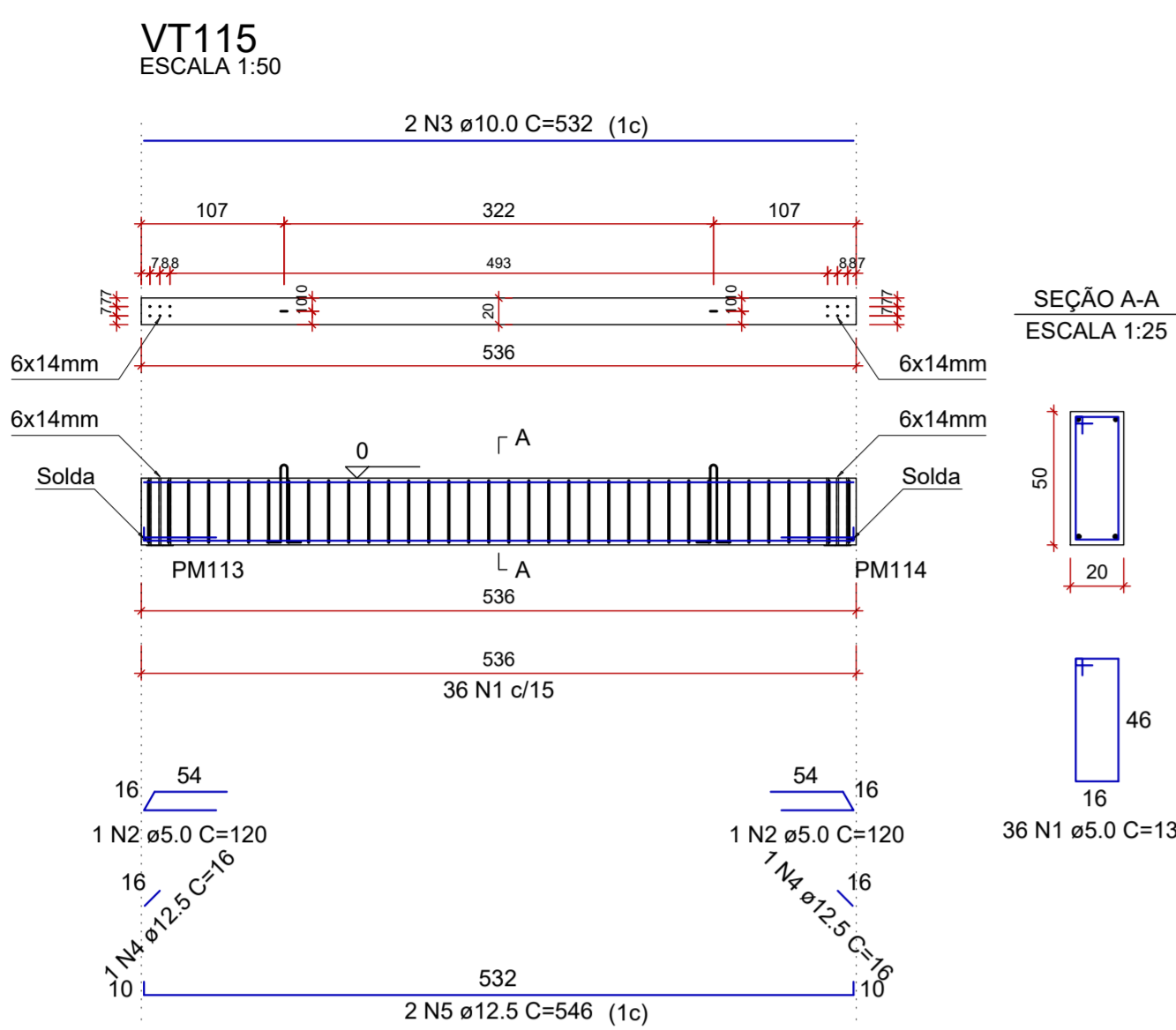
ENDEREÇO: RUA PIRANGUINHO, B. SÃO JOÃO
POUSO ALEGRE - MINAS GERAIS

DISCIPLINA: ESTRUTURAL

FASE DO PROJETO: EXECUTIVO

FOLHA Nº: 23/72

DATA INICIAL: 31/01/2023 | ESCALA: INDICADA | REVISÃO: R01 | ARQUIVO: DAC-PMPA-UPA-PE-EST-R02.DWG



Relação das alças de içamento				
Qlde.	Aço	ø (mm)	C. Anc. (cm)	C. Unit. (cm)
28	ASTM A36	10	48	138