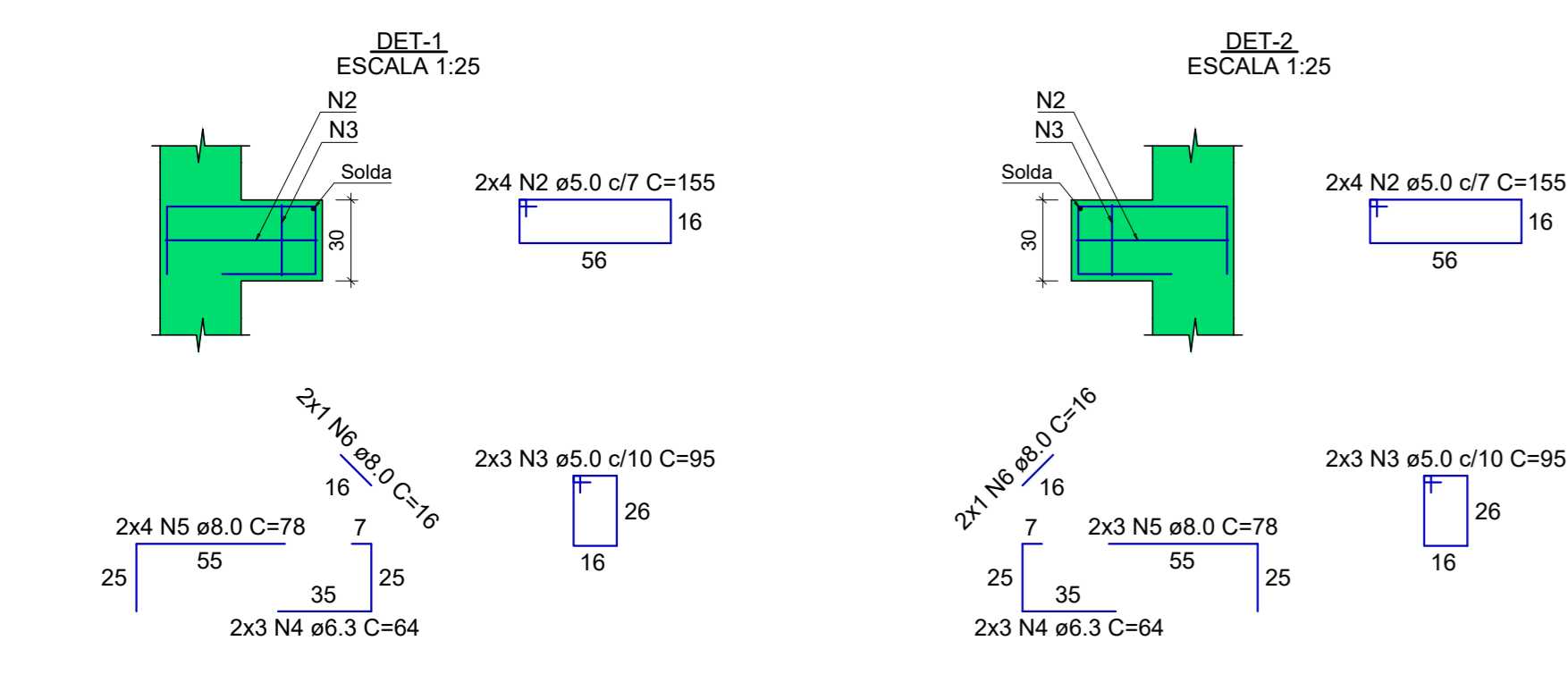
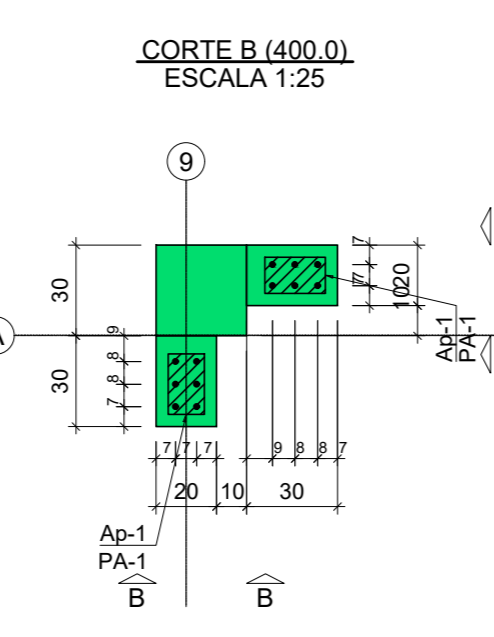
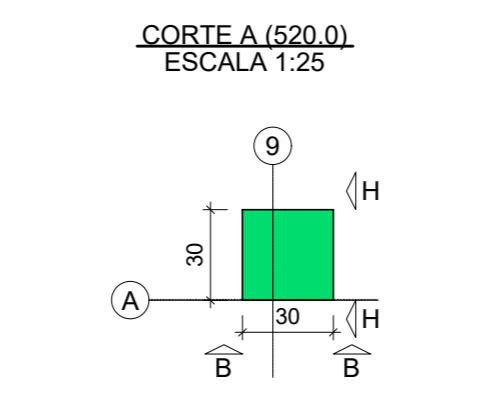
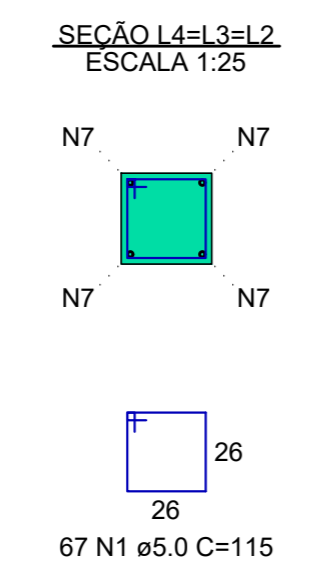
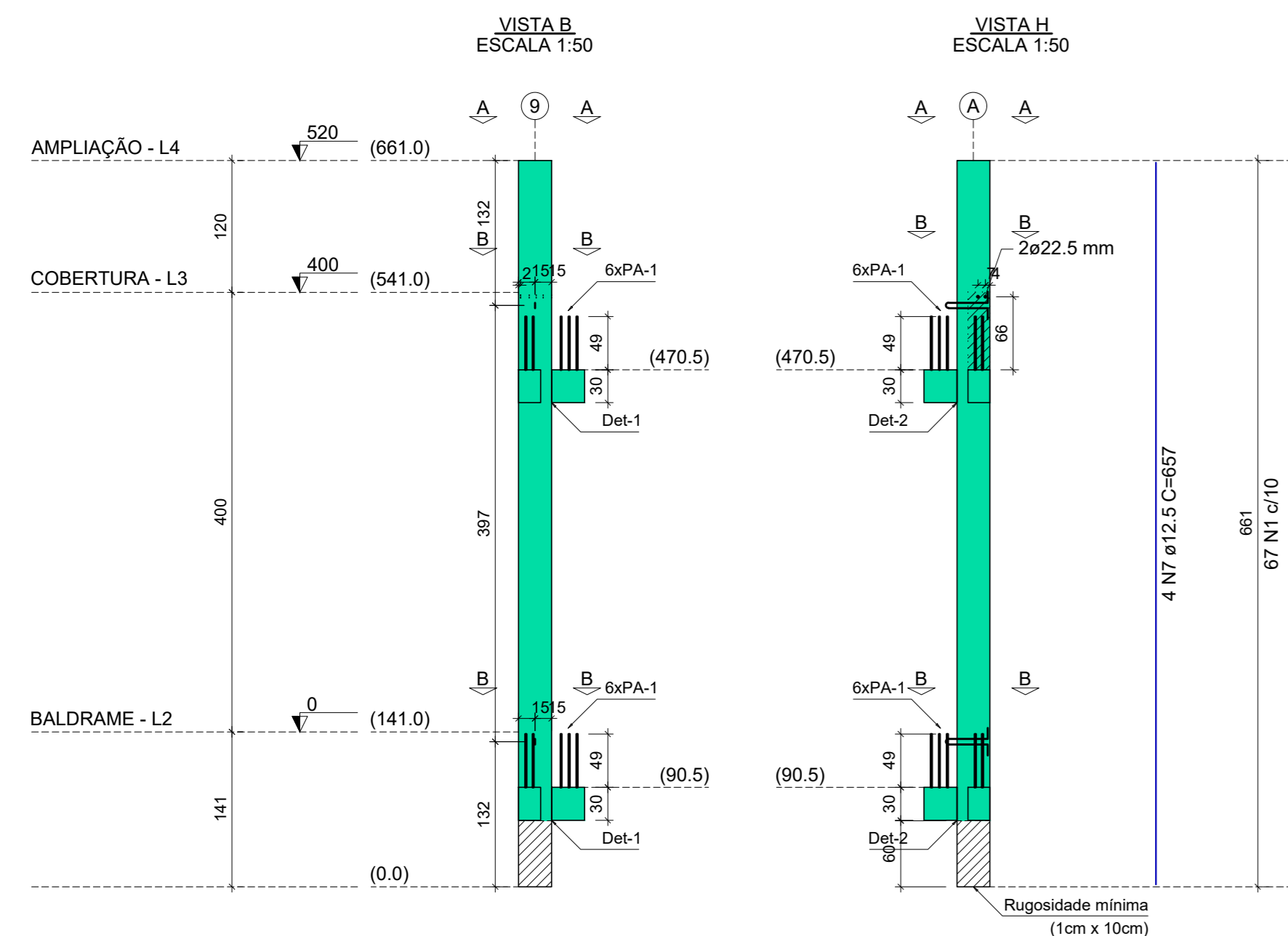
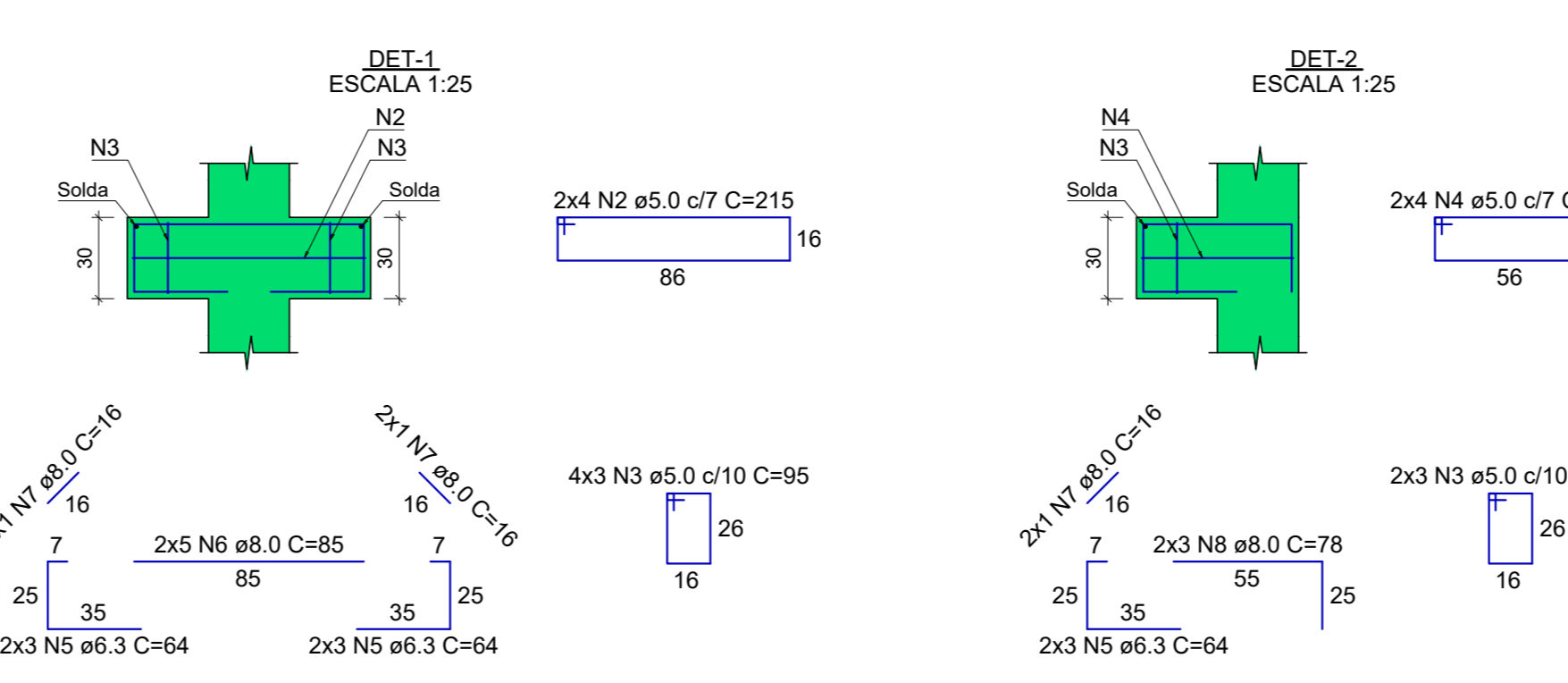
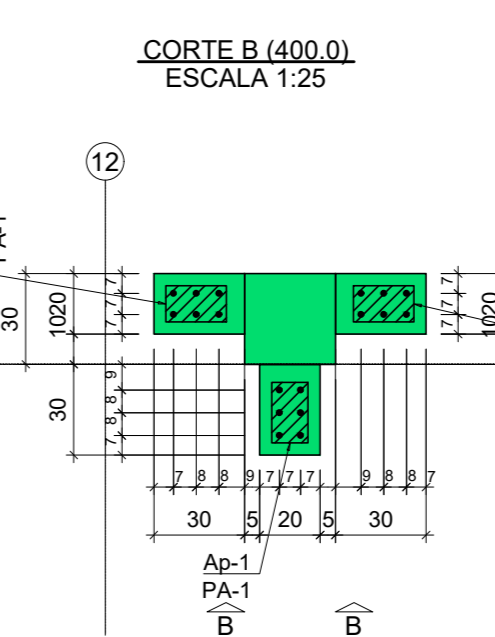
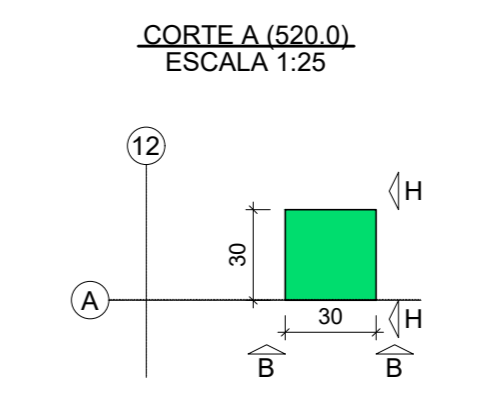
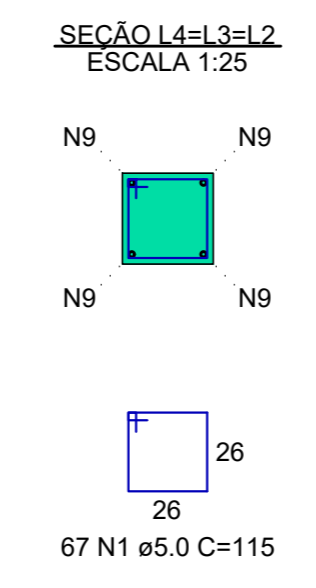
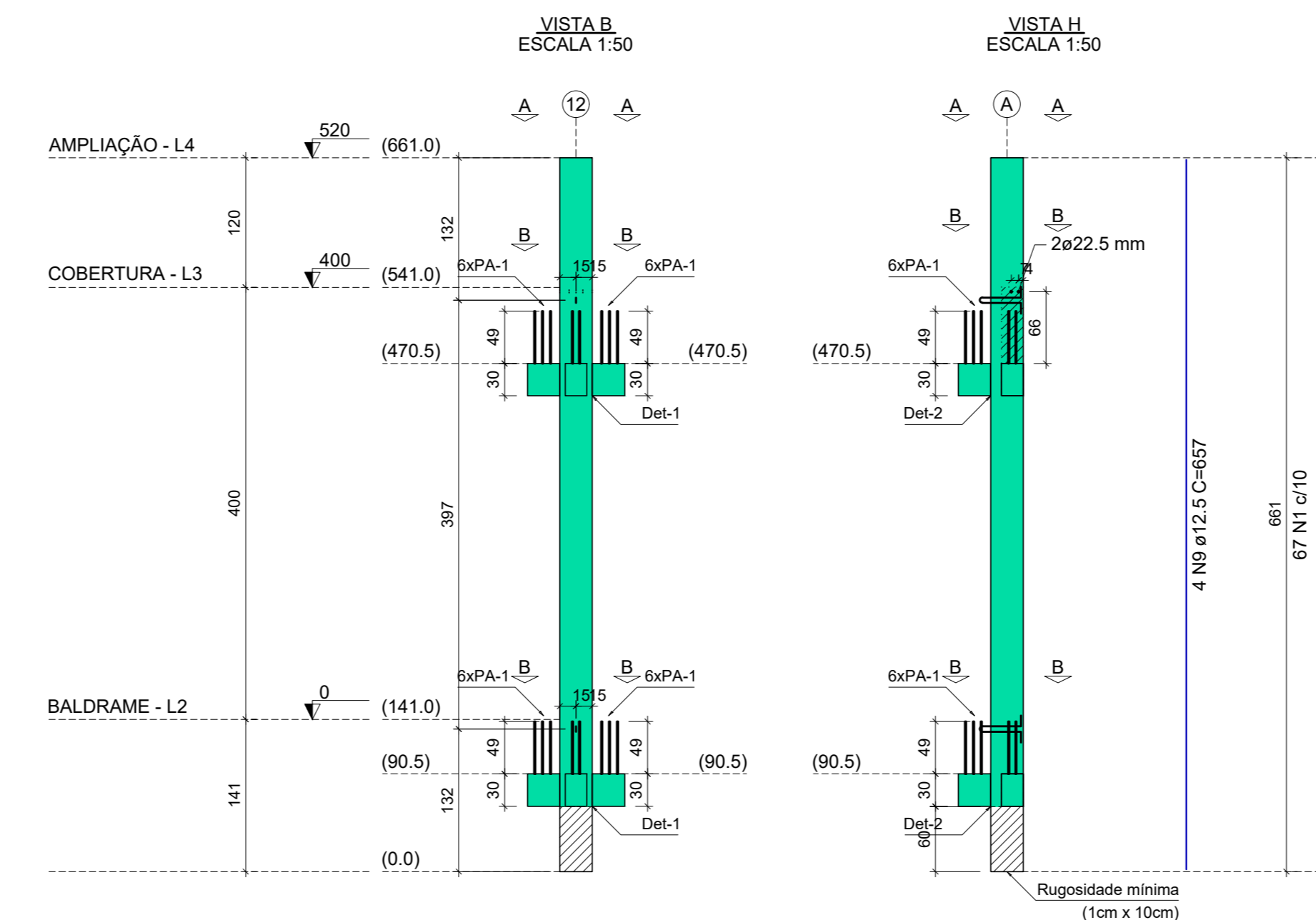


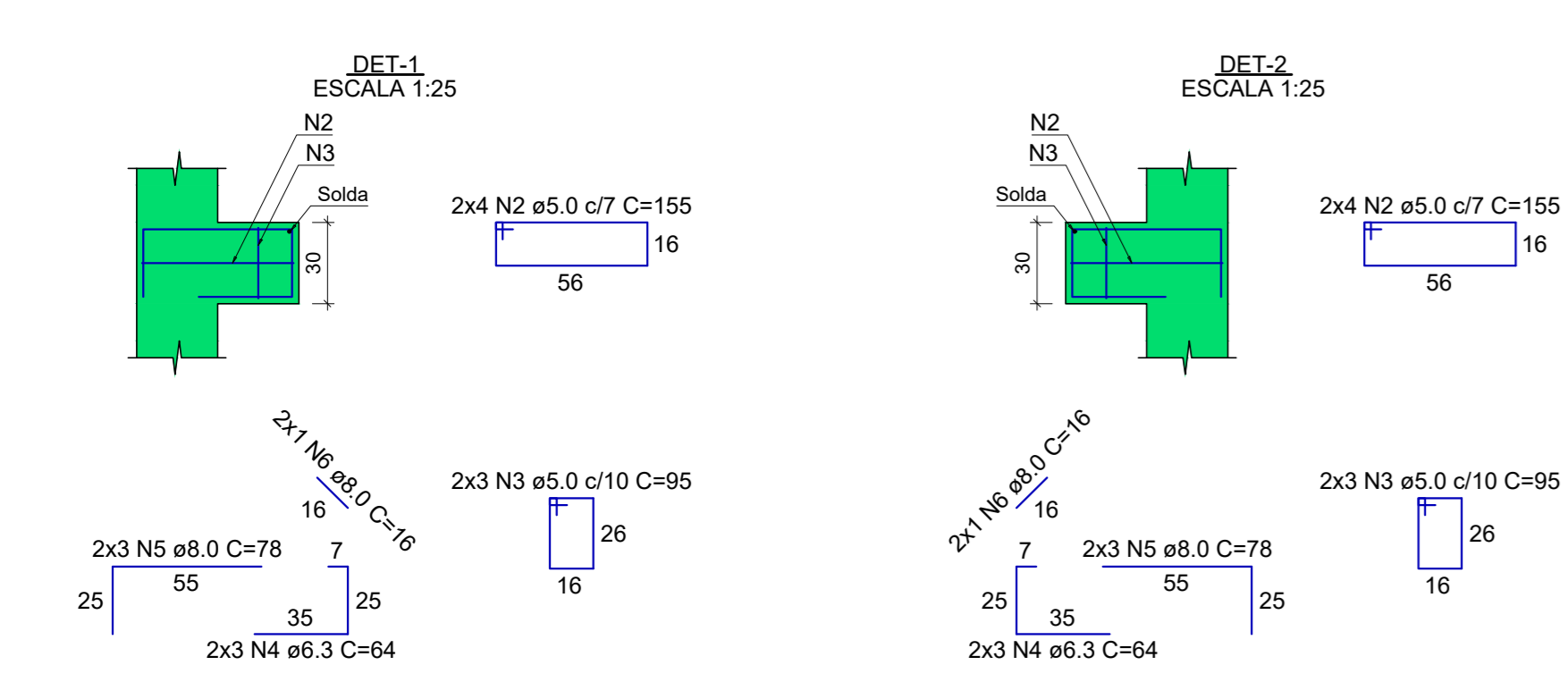
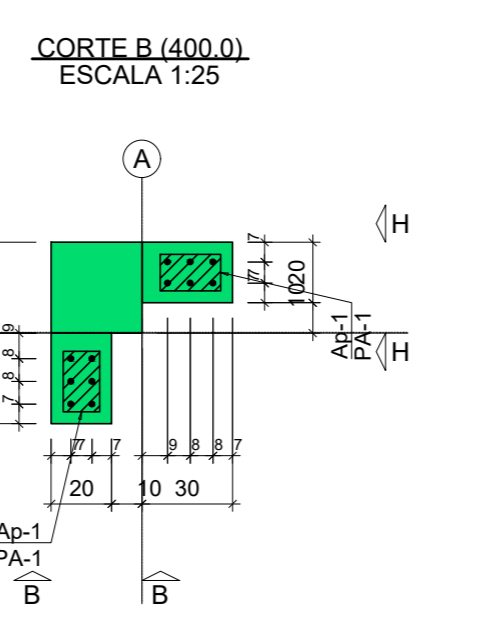
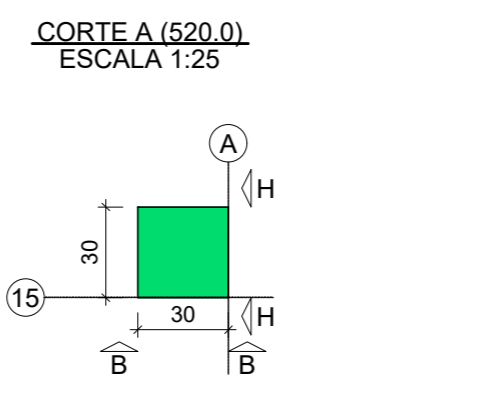
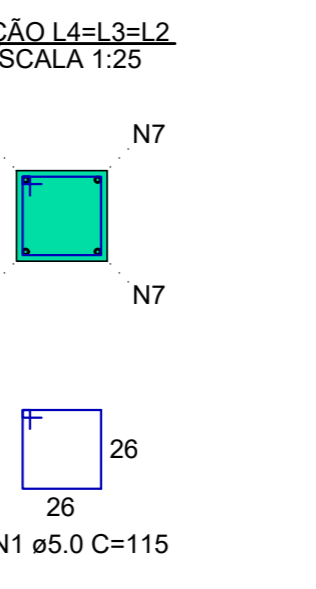
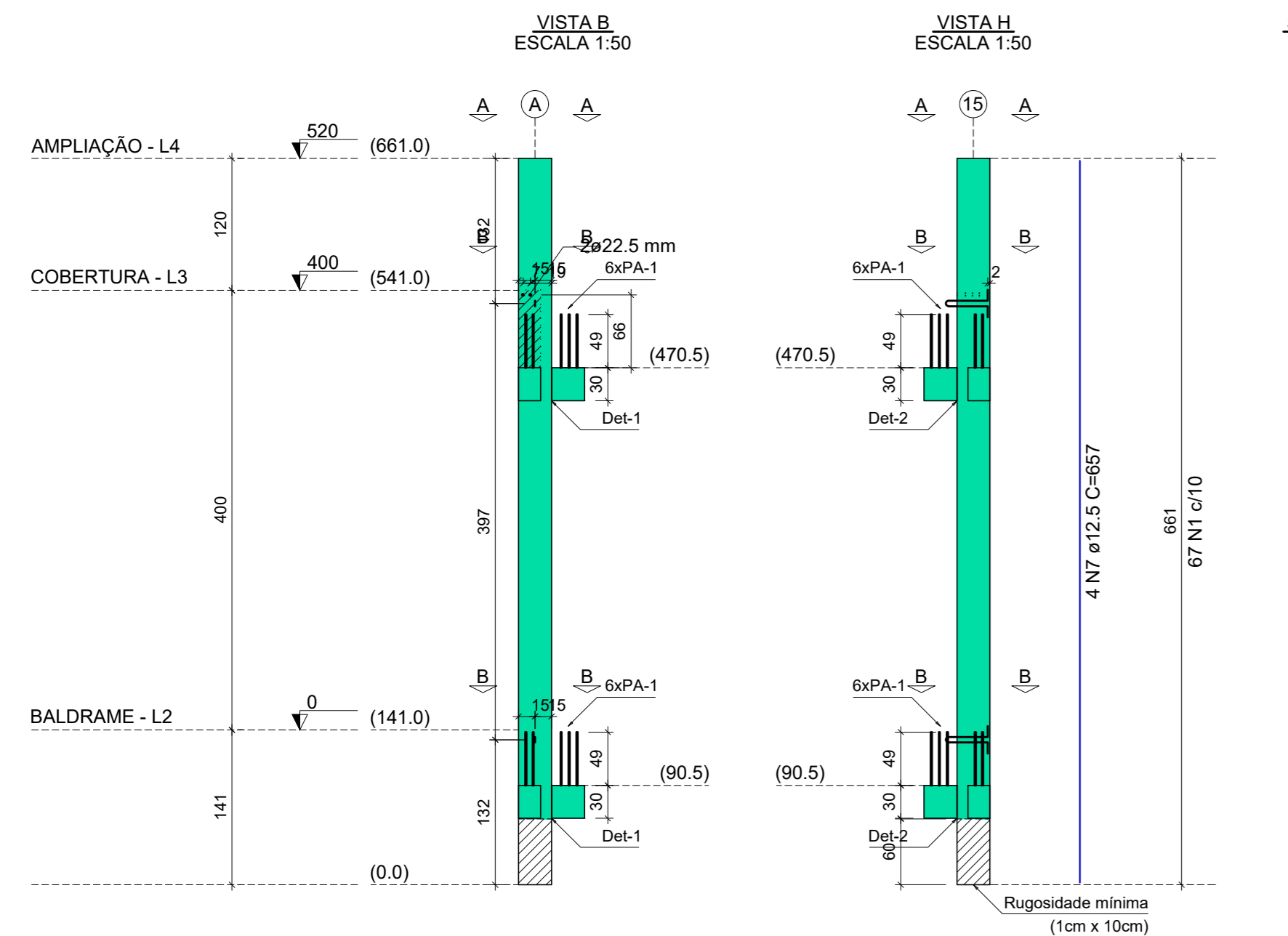
P1=P5=P35



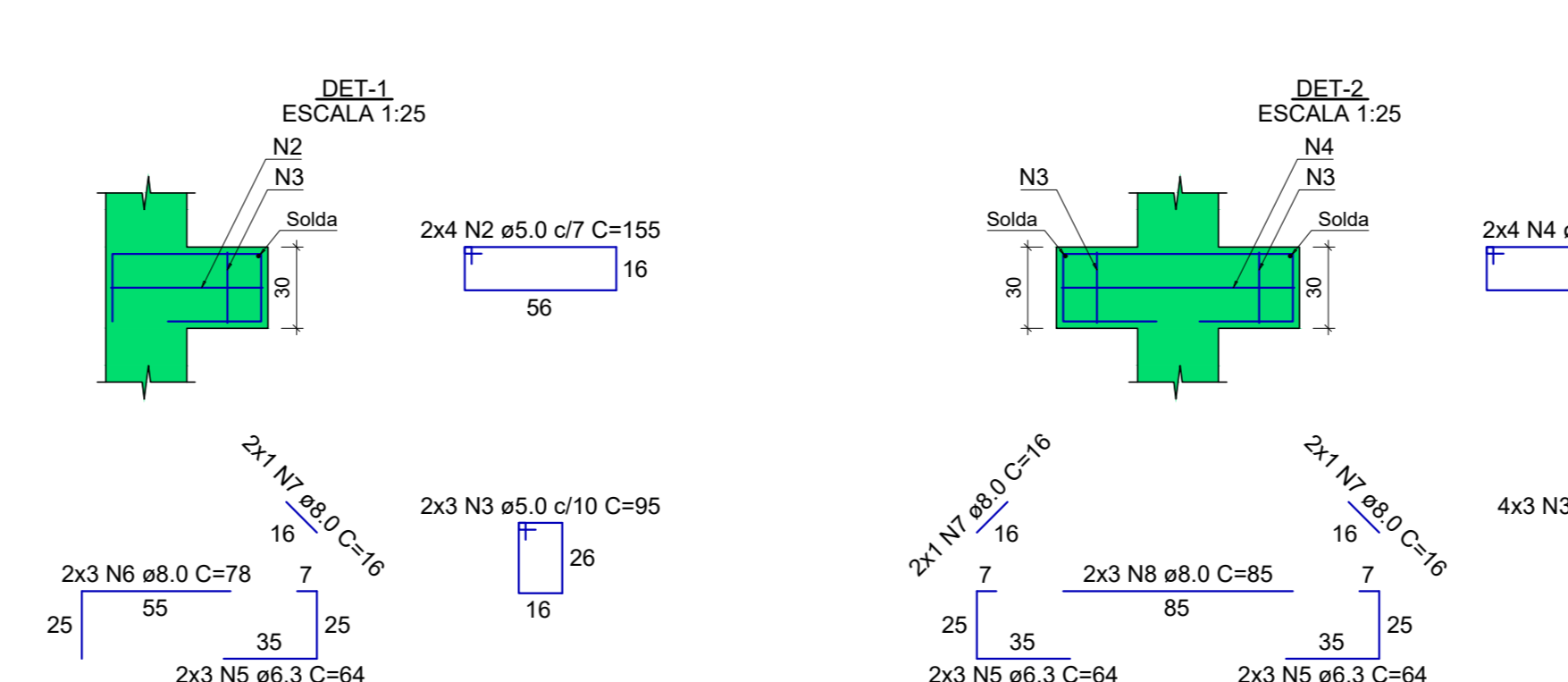
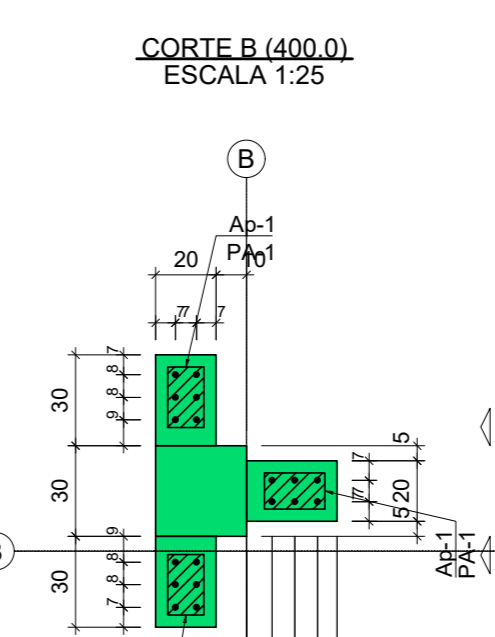
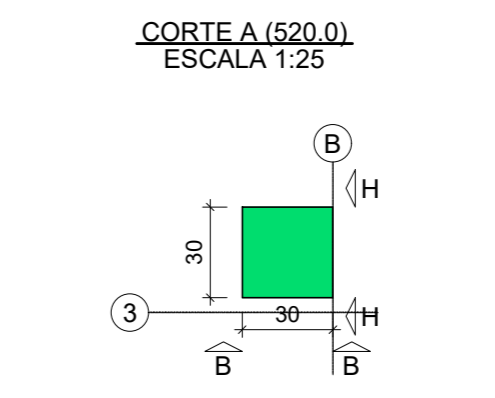
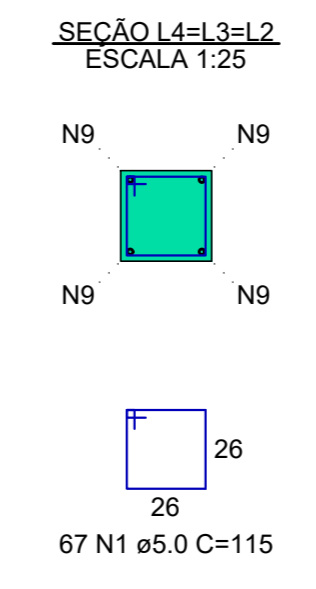
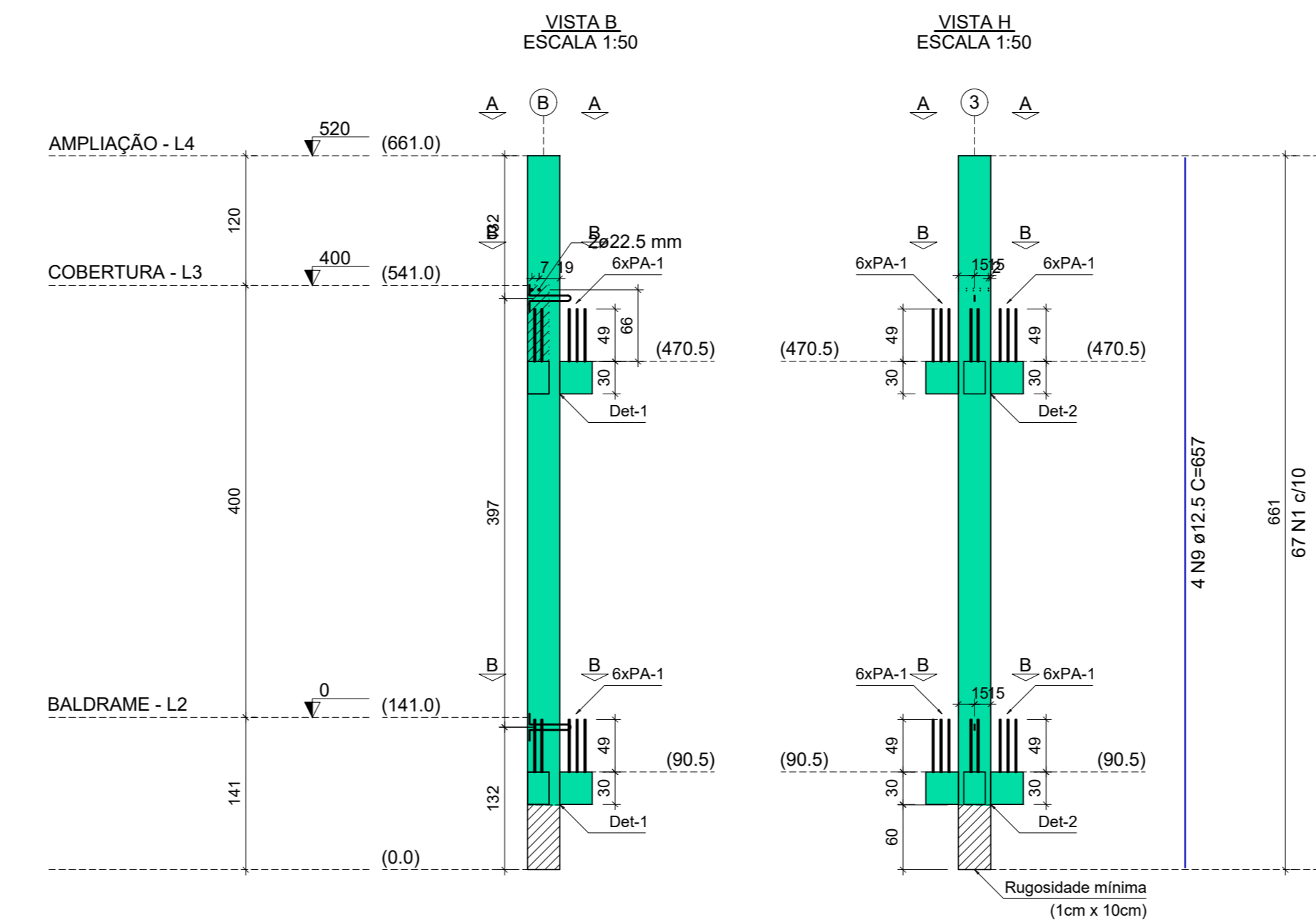
P2=P3=P33=P34=P51=P56



P4=P8=P44



P6=P30=P66



Nome	Quantidade	Dimensões B (cm) H (cm) E (cm)	Dureza
Ap-1	78	12 20 0.5	70 Shore A

Nome	Quantidade	Aço a (mm)	Comp. (cm)
PA-1	468	CA25 10	77

Gide.	Aço	a (mm)	C. Anc. (cm)	C. Unit. (cm)
30	ASTM A36	10	28	99

RELAÇÃO DO AÇO

ELEMENTO	AÇO	N	DIAM (mm)	QUANT	C.UNIT (cm)	C.TOTAL (cm)
P1x3	CA60	1	5.0	201	115	23155
	CA60	2	5.0	48	155	7440
	CA60	3	5.0	36	95	3420
	CA50	4	6.3	36	64	2304
	CA50	5	8.0	42	78	3276
	CA50	6	8.0	12	16	192
	CA50	7	12.5	12	657	7884

AÇO	DIAM (mm)	C.TOTAL (m)	PESO + 10% (kg)
CA50	6.3	23	6.2
	8.0	34.8	15.0
	12.5	78.8	83.5
CA60	5.0	339.8	57.6
PESO TOTAL (kg)			
CA50		104.7	57.6
CA60			

Volume de concreto (C-30) = 2.01 m³
Área de forma = 0.00 m²

RELAÇÃO DO AÇO

ELEMENTO	AÇO	N	DIAM (mm)	QUANT	C.UNIT (cm)	C.TOTAL (cm)
P6x3	CA60	1	5.0	115	115	23115
	CA60	2	5.0	24	155	3720
	CA60	3	5.0	54	95	5130
	CA60	4	5.0	24	215	5160
	CA50	5	6.3	54	64	3456
	CA50	6	8.0	18	78	1404
	CA50	7	8.0	18	16	288
	CA50	8	8.0	18	85	1530
	CA50	9	12.5	12	657	7884

AÇO	DIAM (mm)	C.TOTAL (m)	PESO + 10% (kg)
CA50	6.3	34.6	9.3
	8.0	32.2	13.9
	12.5	78.2	83.5
CA60	5.0	371.3	62.9
PESO TOTAL (kg)			
CA50		106.7	62.9
CA60			

Volume de concreto (C-30) = 2.12 m³
Área de forma = 0.00 m²

RELAÇÃO DO AÇO

ELEMENTO	AÇO	N	DIAM (mm)	QUANT	C.UNIT (cm)	C.TOTAL (cm)
P2x6	CA60	1	5.0	402	115	46230
	CA60	2	5.0	48	215	10320
	CA60	3	5.0	108	95	10260
	CA60	4	5.0	78	155	7440
	CA50	5	6.3	108	64	6912
	CA50	6	8.0	36	85	5100
	CA50	7	8.0	36	16	576
	CA50	8	8.0	36	78	2808
	CA50	9	12.5	24	657	15768

AÇO	DIAM (mm)	C.TOTAL (m)	PESO + 10% (kg)
CA50	6.3	69.1	18.6
	8.0	84.9	36.9
	12.5	157.7	167.1
CA60	5.0	742.5	125.9
PESO TOTAL (kg)			
CA50		222.8	
CA60		125.9	

Volume de concreto (C-30) = 4.24 m³
Área de forma = 0.00 m²

RELAÇÃO DO AÇO

ELEMENTO	AÇO	N	DIAM (mm)	QUANT	C.UNIT (cm)	C.TOTAL (cm)
P4x3	CA60	1	5.0	201	115	23115
	CA60	2	5.0	48	155	7440
	CA60	3	5.0	36	95	3420
	CA50	4	6.3	36	64	2304
	CA50	5	8.0	42	78	3276
	CA50	6	8.0	12	16	192
	CA50	7	12.5	12	657	7884

AÇO	DIAM (mm)	C.TOTAL (m)	PESO + 10% (kg)
CA50	6.3	23	6.2
	8.0	30	13
	12.5	78.8	83.5
CA60	5.0	339.8	57.6
PESO TOTAL (kg)			
CA50		102.8	57.6
CA60			

Volume de concreto (C-30) = 2.01 m³
Área de forma = 0.00 m²

PROJETO RUA Miguel Vianna, nº 81, 2º Andar Bairro Monte Civic CEP: 37500-000 - Pouso Alegre / MG Tel: (35) 3623-8646 www.dacengenharia.com.br	COORDENAÇÃO ALDORE GUERINO FERREIRA RESPONSÁVEL TÉCNICO E AUTOR ENG. CIVIL FLÁVIO BARBOSA CREA MG 167/2020
CONSTRUÇÃO DO CENTRO DE ATENÇÃO PSICOSSOCIAL	
ENDEREÇO RUA PIRANGUINHO, B. SÃO JOÃO POUSO ALEGRE - MINAS GERAIS	DISCIPLINA ESTRUTURAL
ASSUNTO PROJETO ESTRUTURAL DETALHAMENTO DAS ARMADURAS PILARES PM	
FASE DO PROJETO EXECUTIVO	
FOLHA Nº 34/41	
DATA INICIAL 31/01/2023	ESCALA INDICADA
REVISÃO R01	ARQUIVO DAC-PM-PA-CAPS-PE-EST-R01.DWG