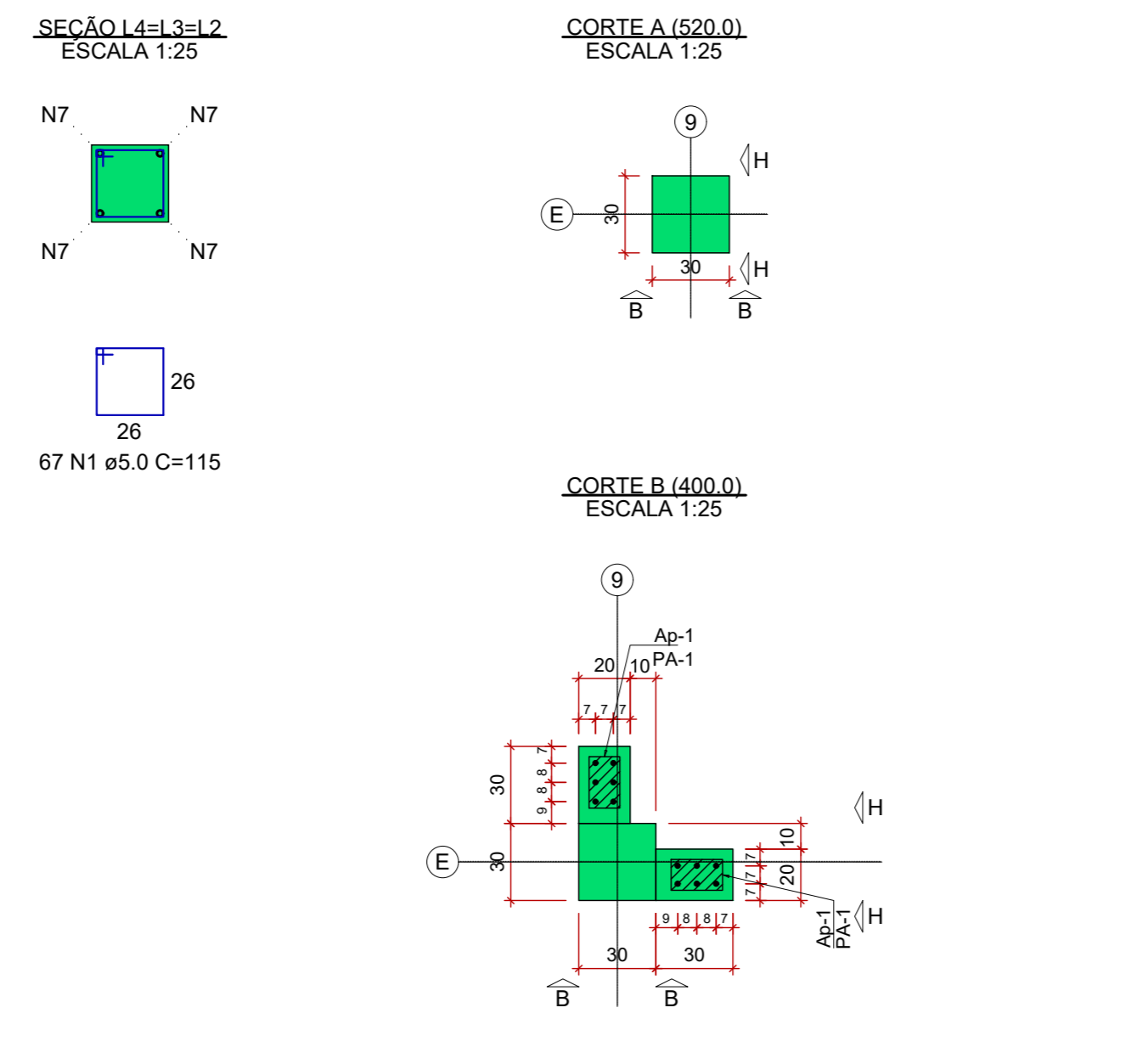
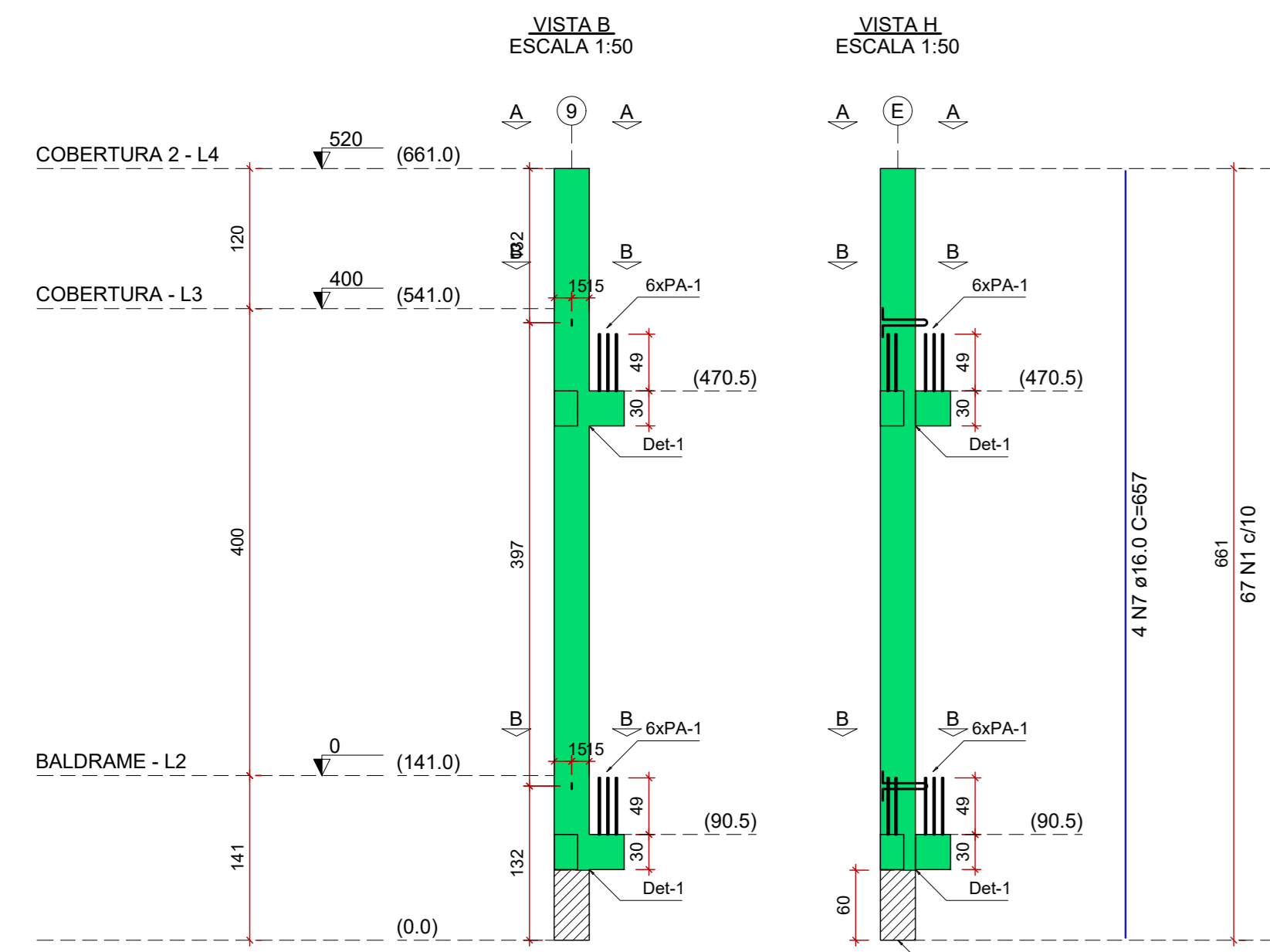
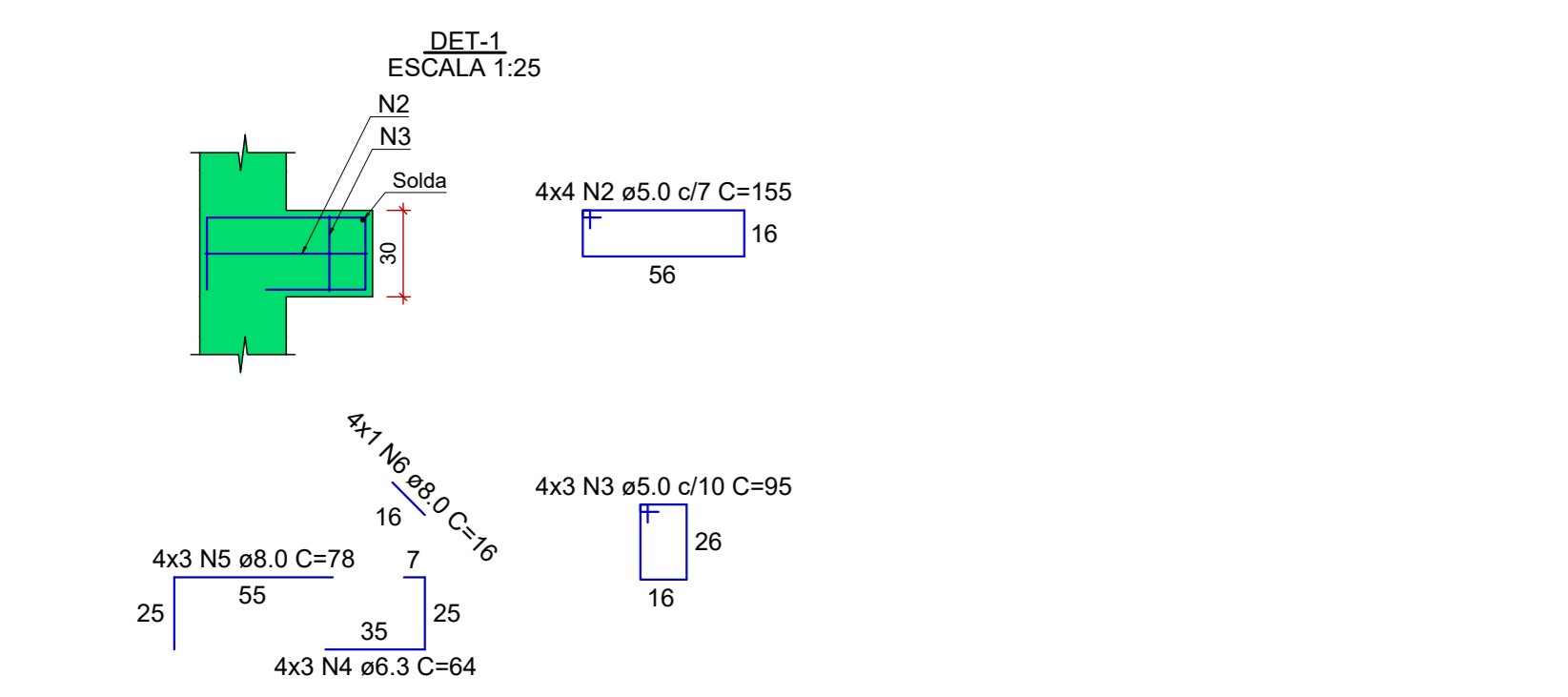
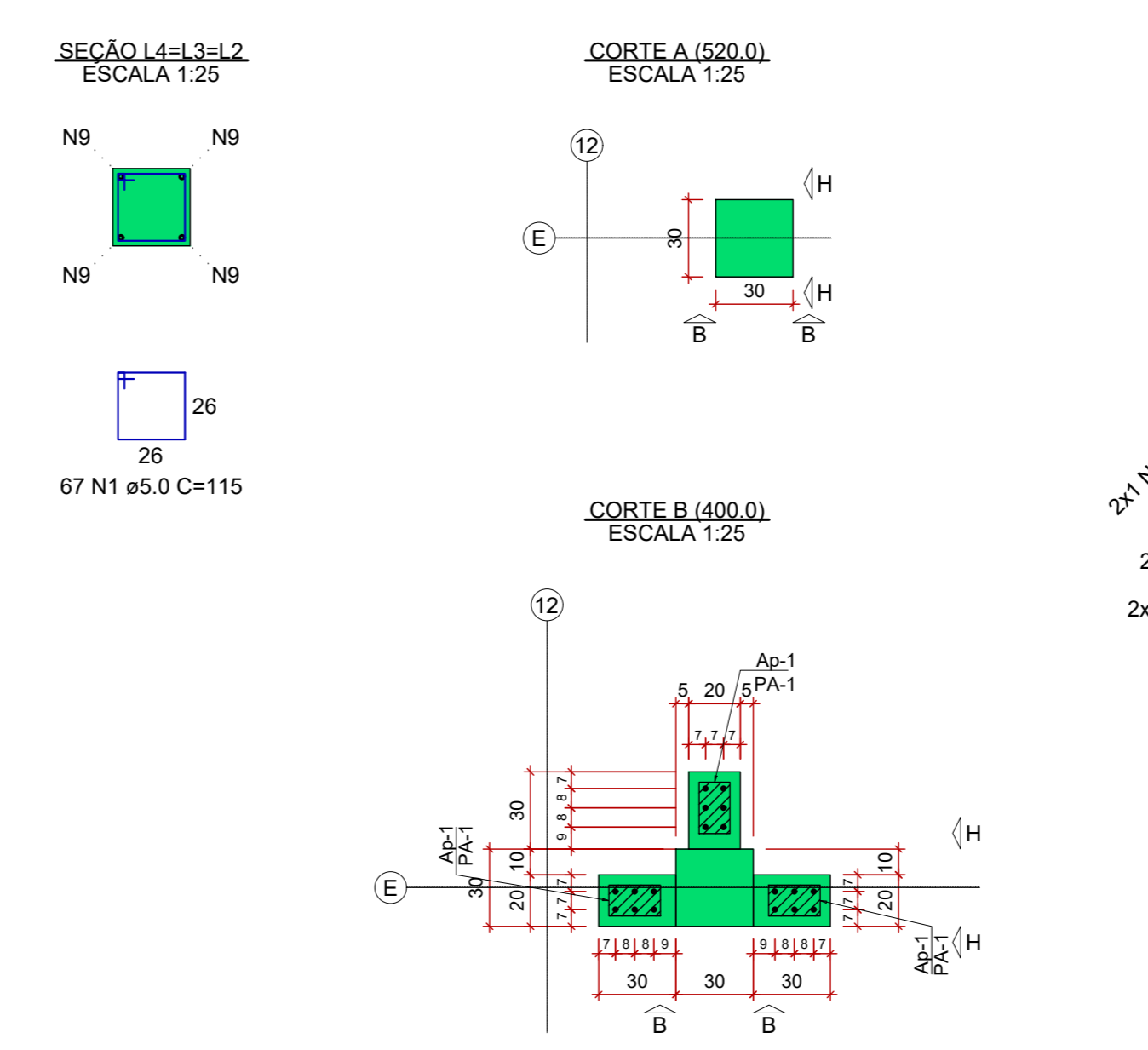
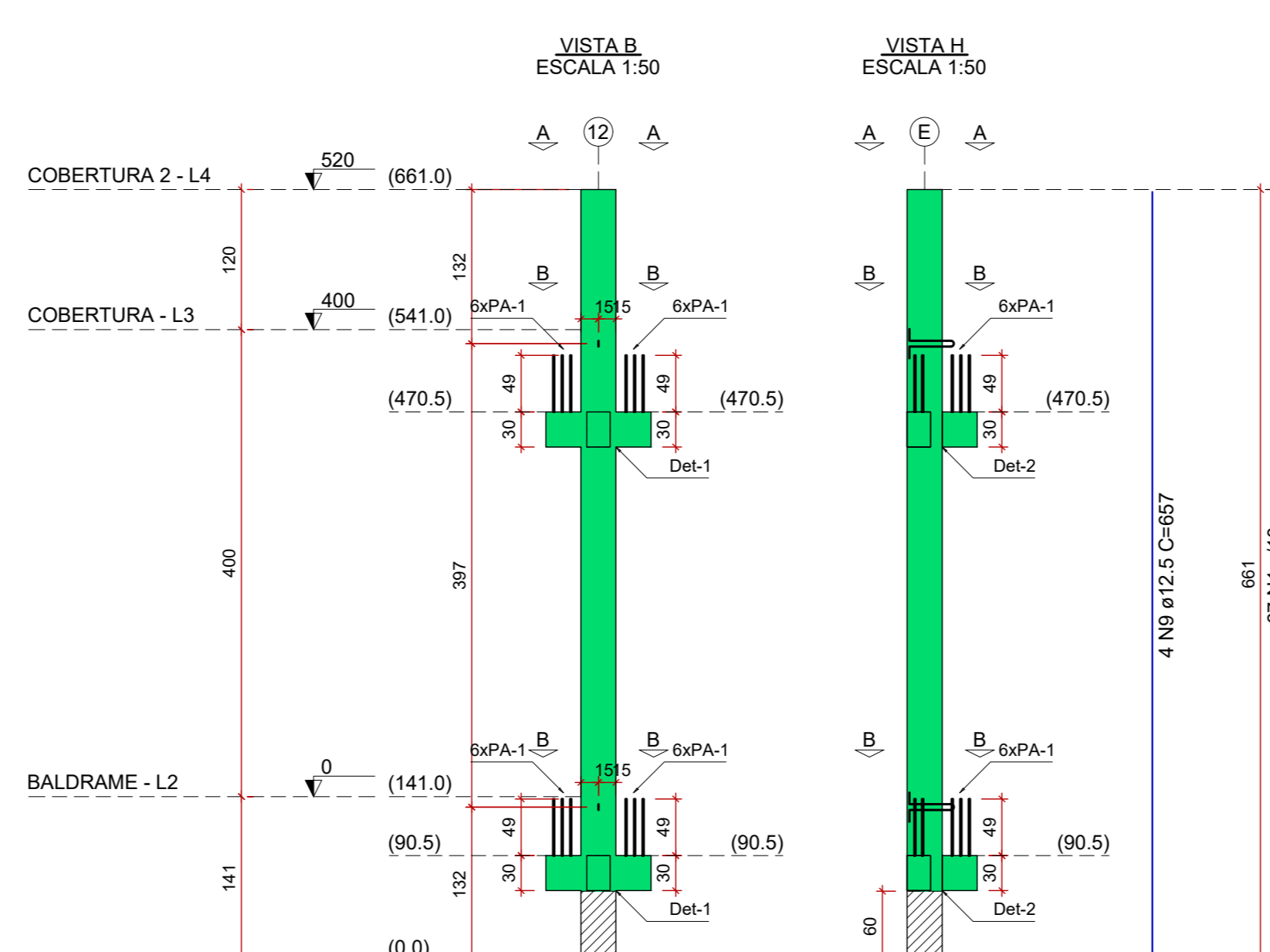


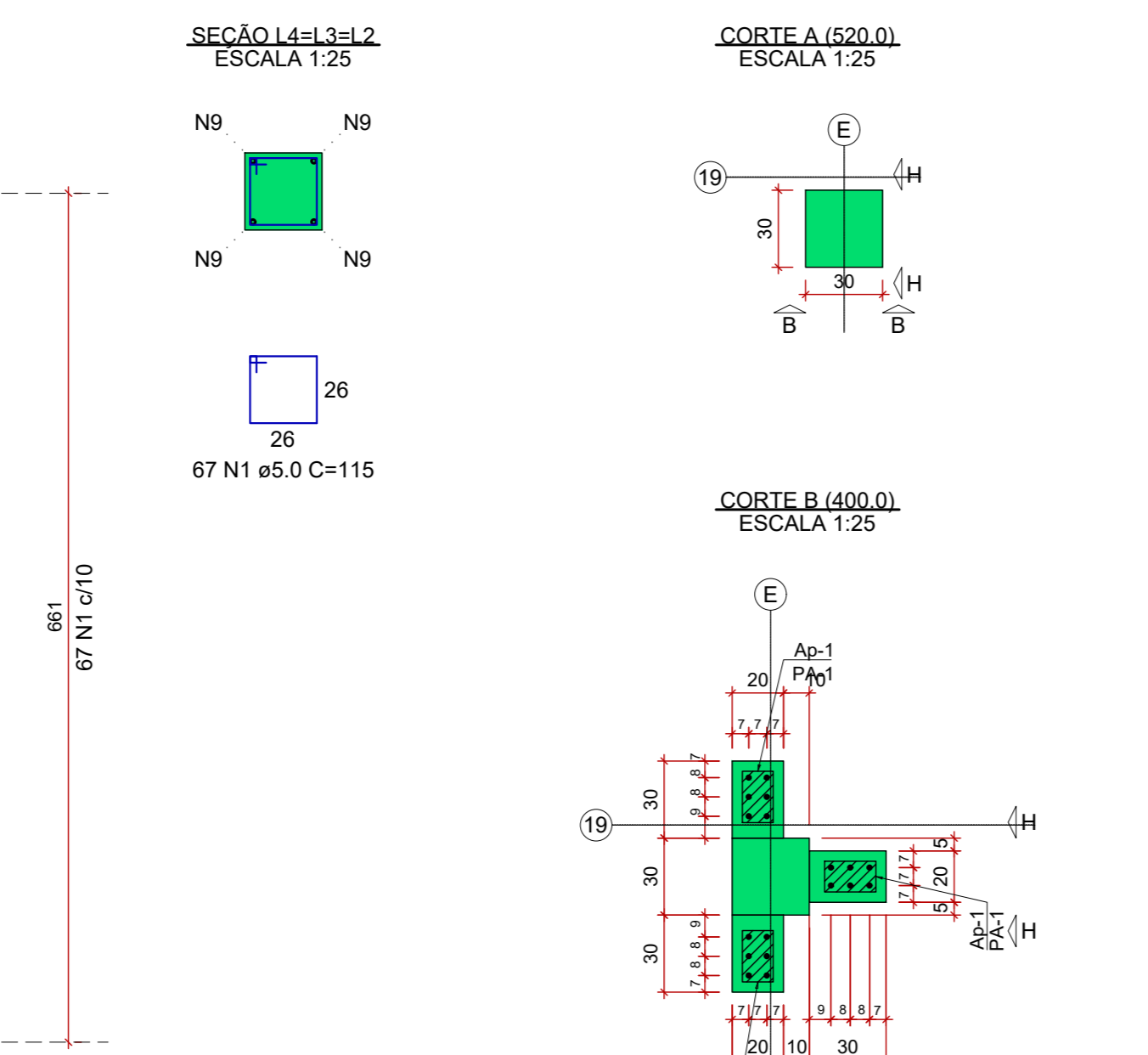
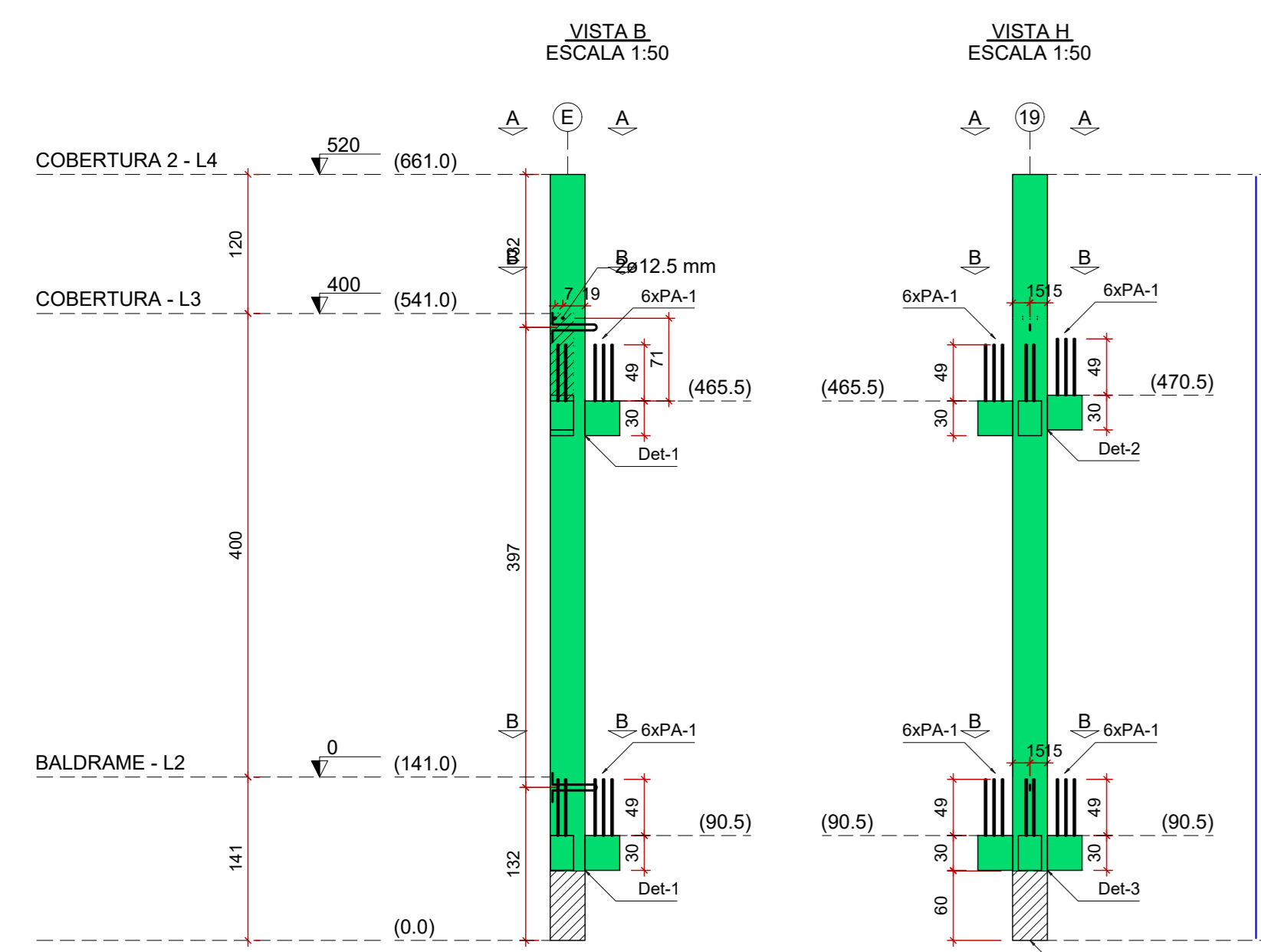
PM11



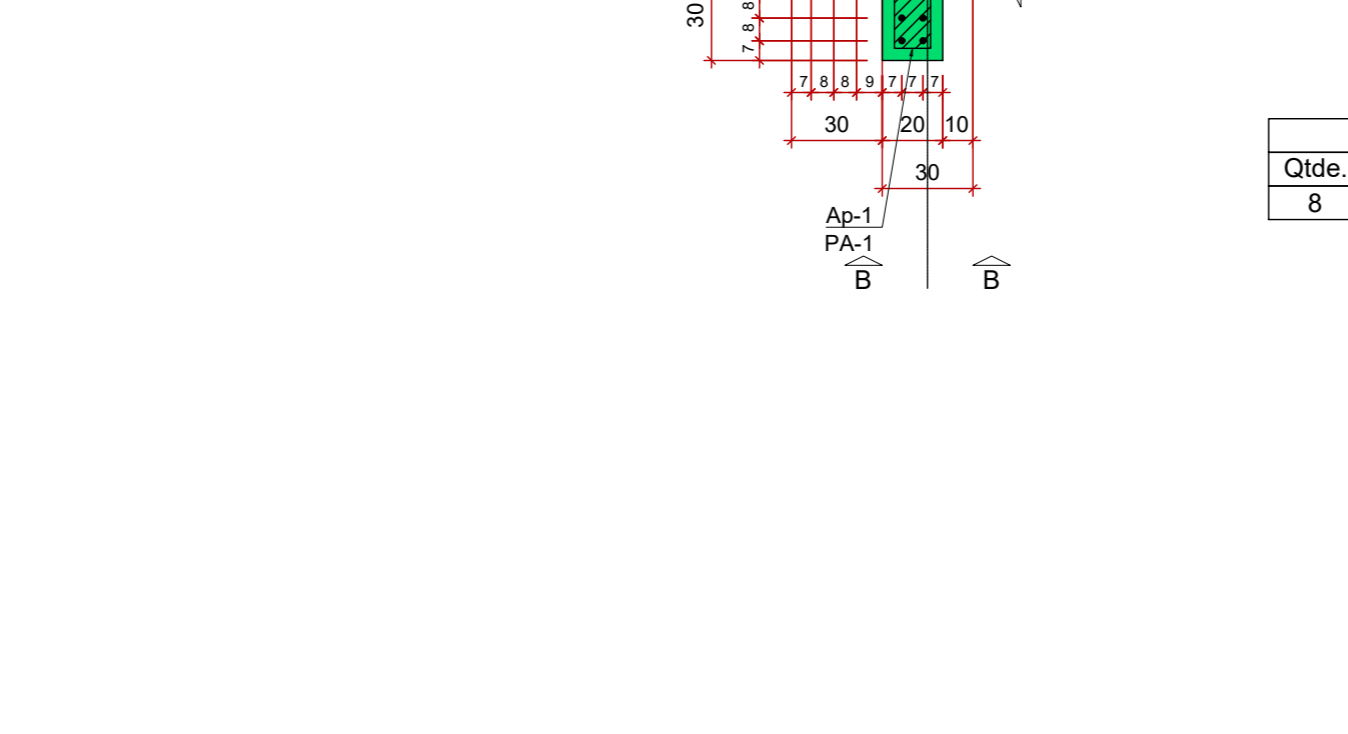
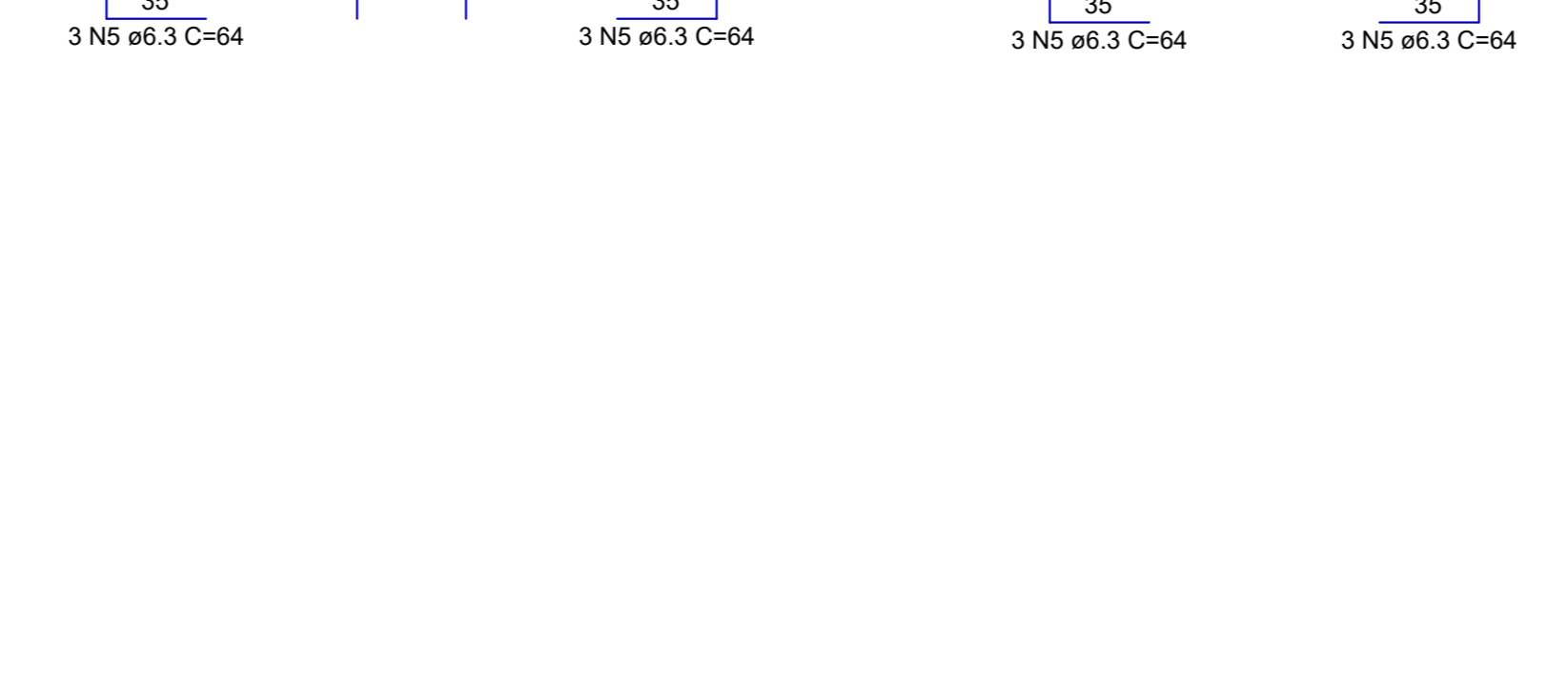
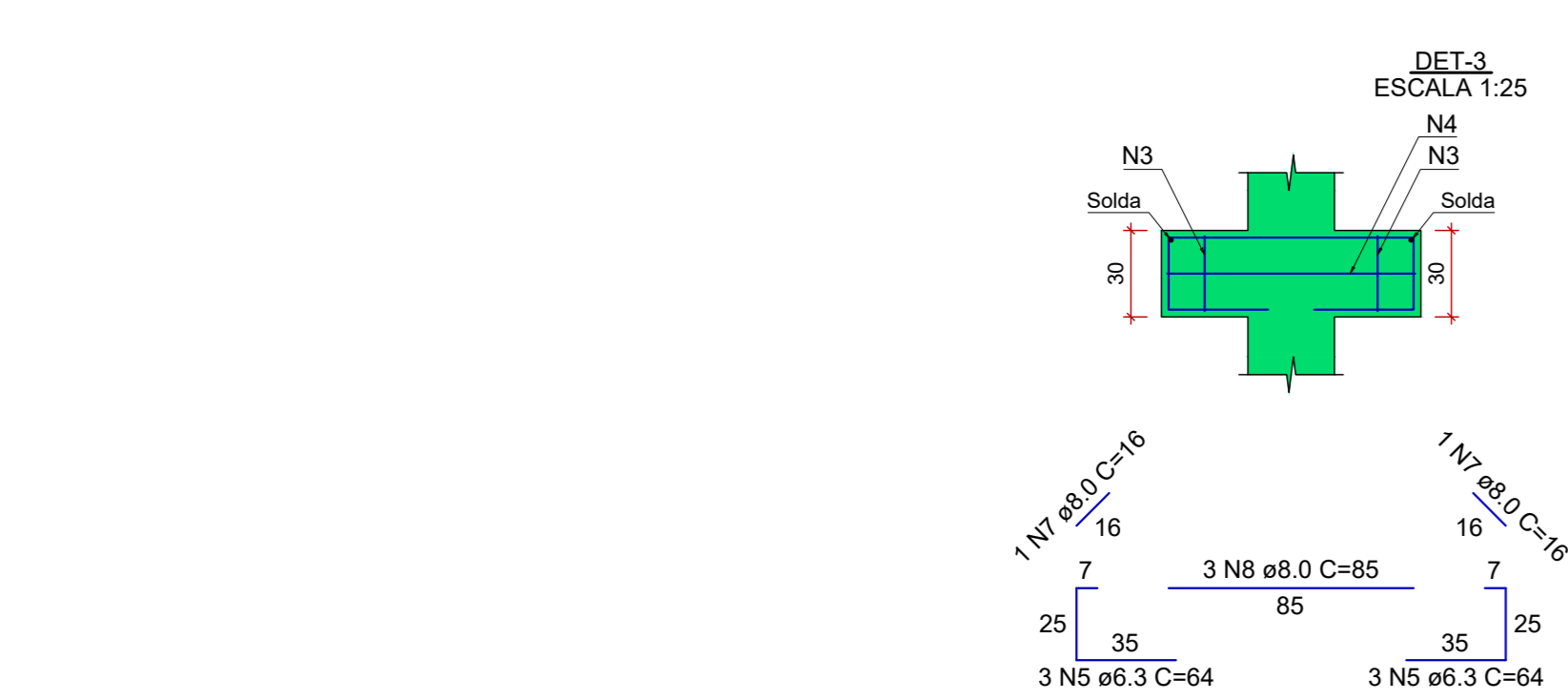
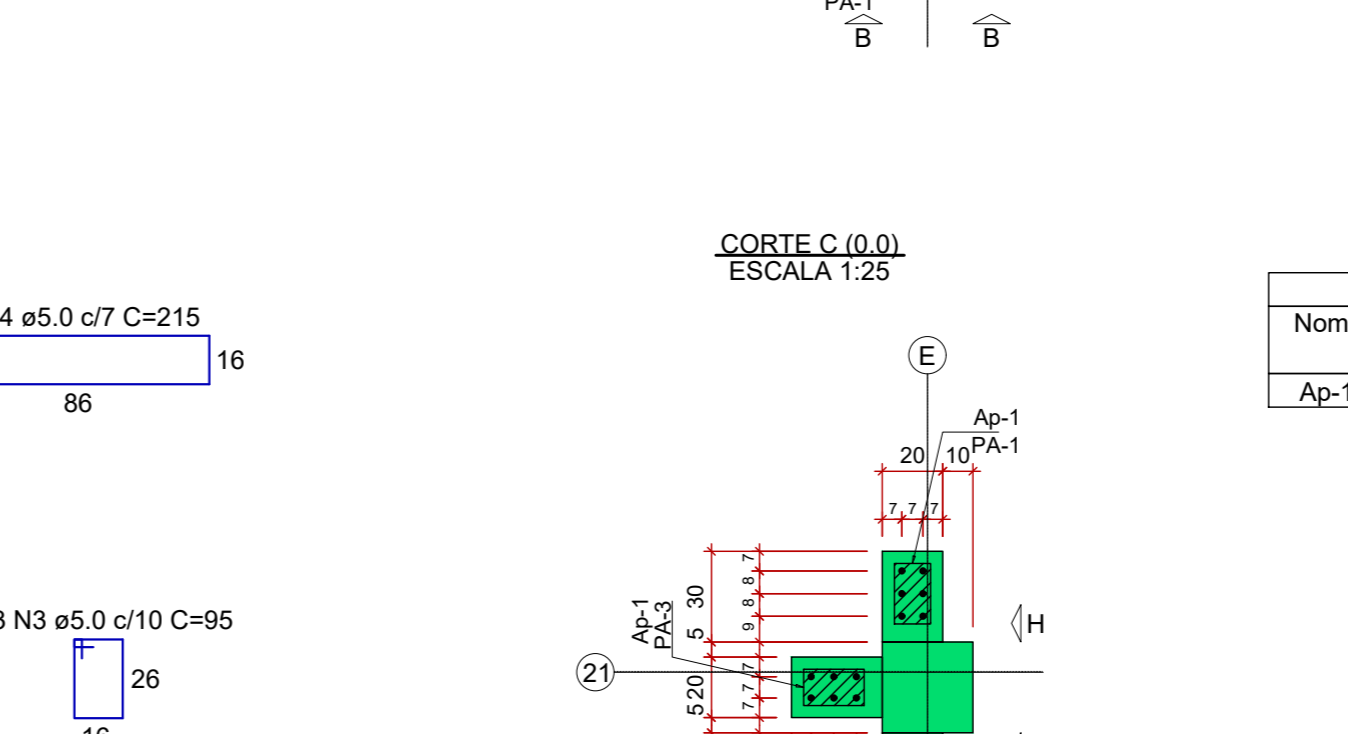
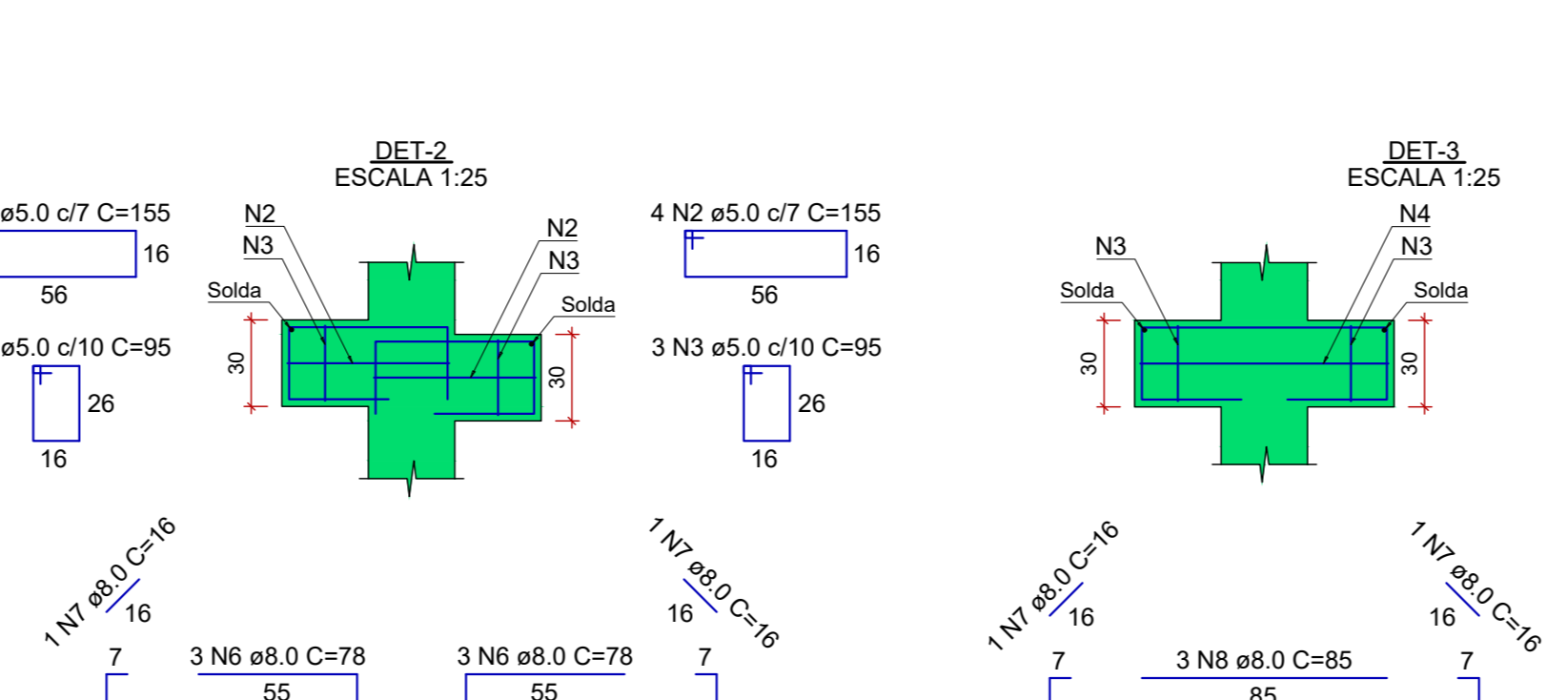
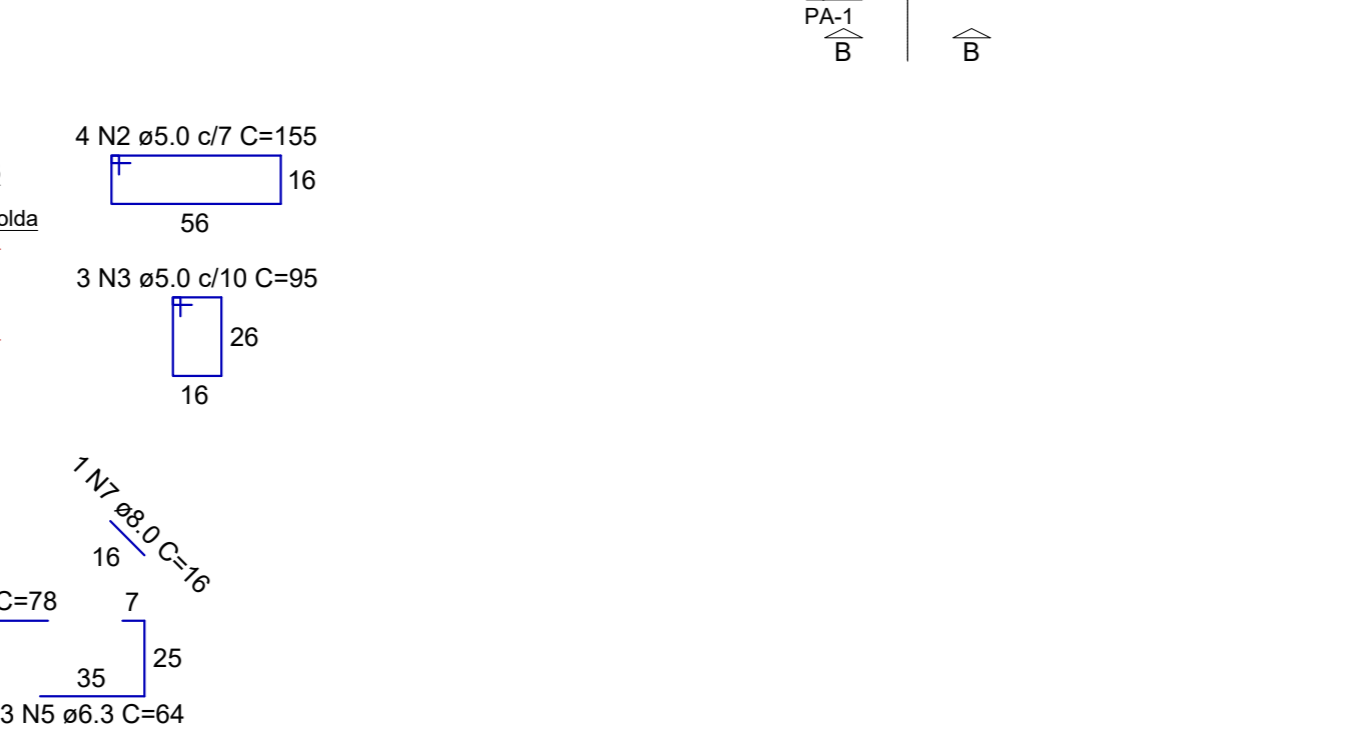
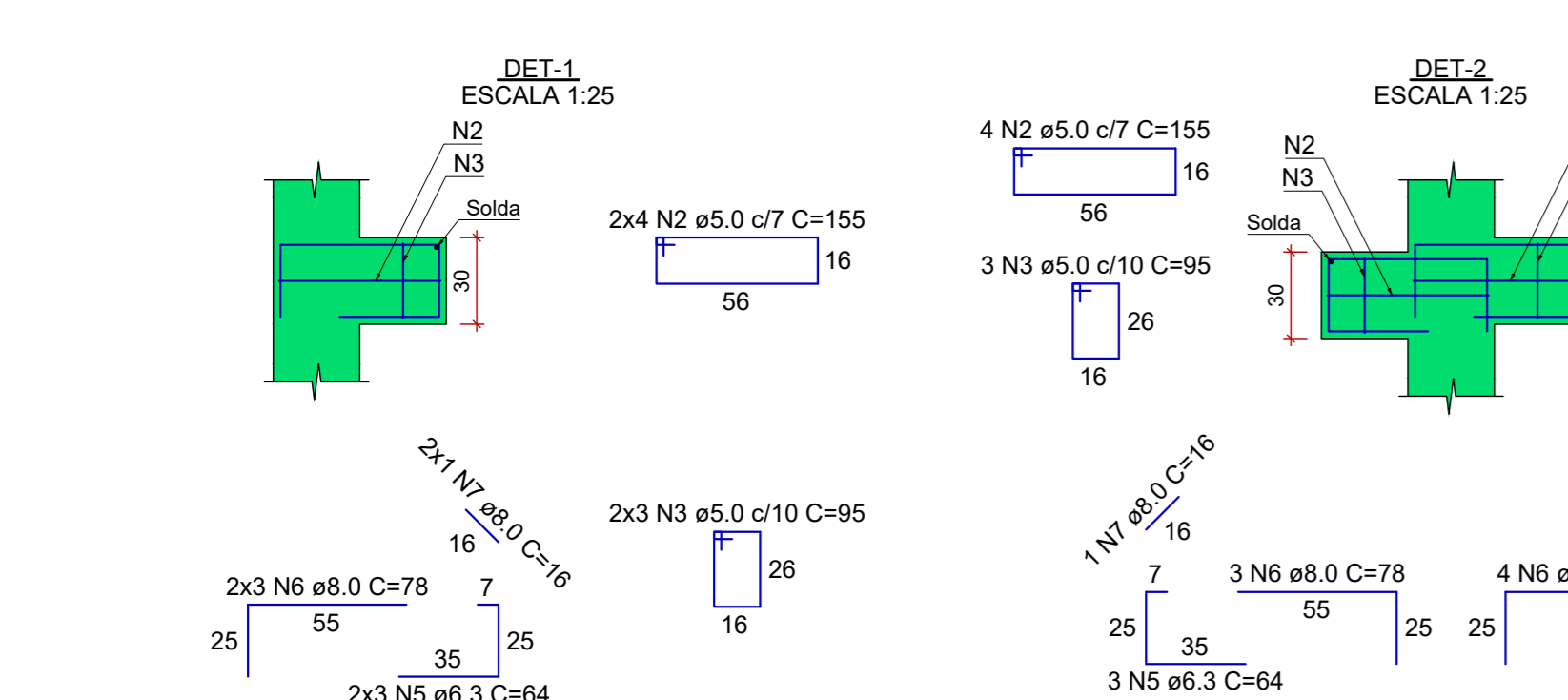
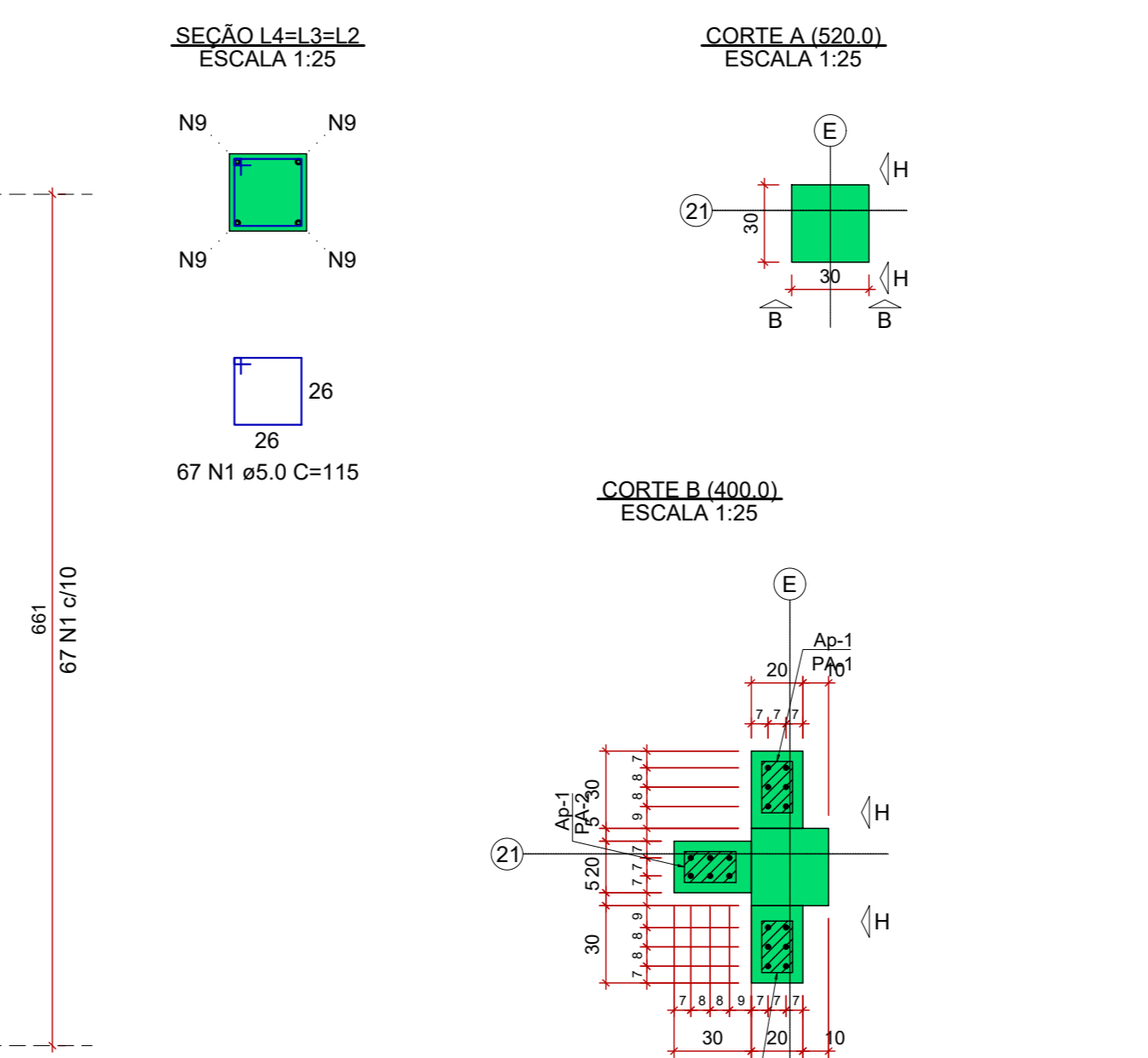
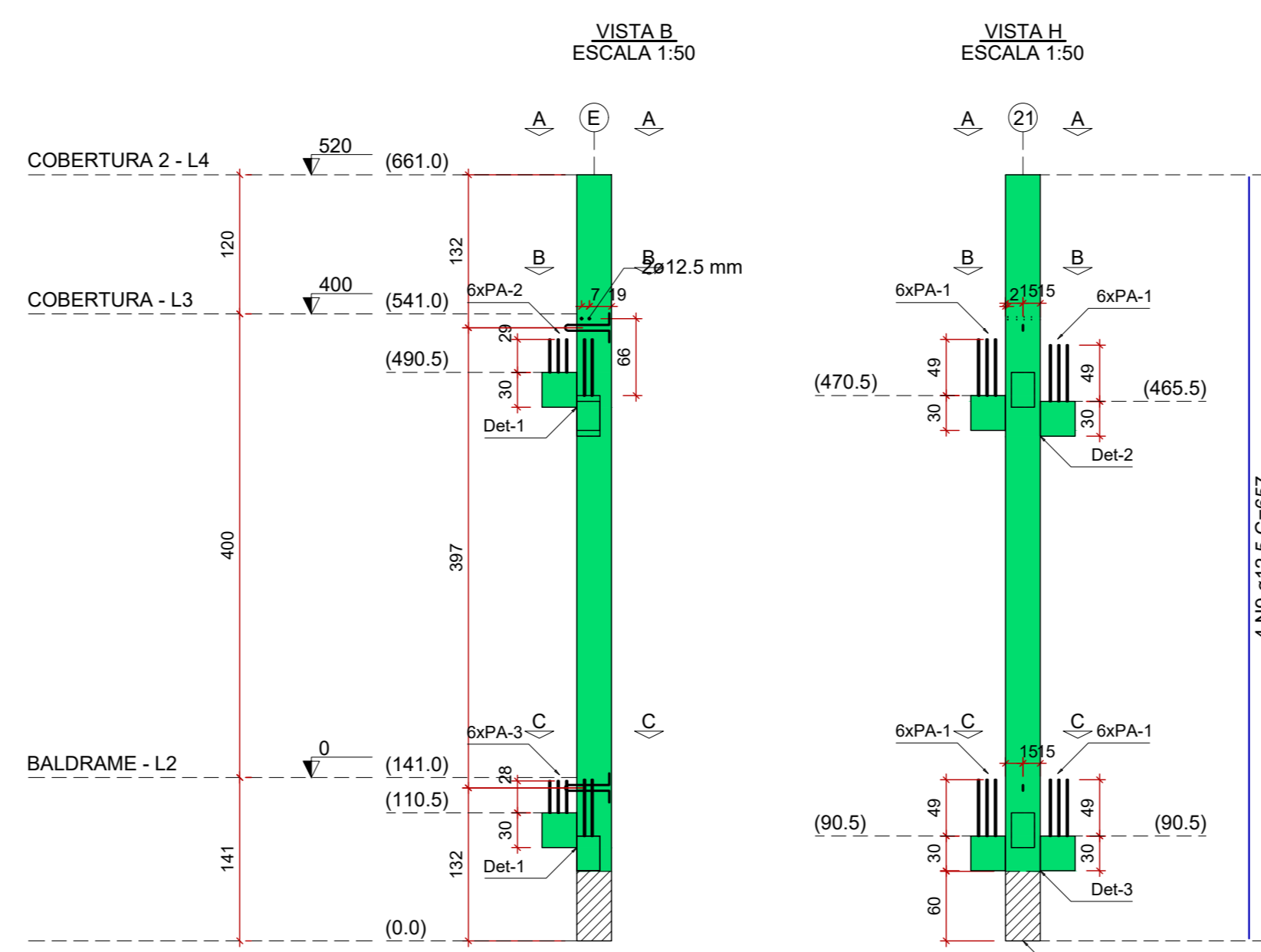
PM12



PM14



PM15



Relação dos aparelhos de apoio

Nome	Quantidade	B (cm)	H (cm)	E (cm)	Dureza
Ap-1	22	12	20	0.5	70 Shore A

Relação dos pinos de ancoragem

Nome	Quantidade	Dimensões	Aço e (mm)	Comp. (cm)
PA-1	120	CA25	10	77
PA-2	6	CA25	10	57
PA-3	6	CA25	10	56

Relação das alças de içamento

Qtde.	Aço e (mm)	C. Anc. (cm)	C. Unit. (cm)
8	ASTM A36	10	28
			99

RELAÇÃO DO AÇO

ELEMENTO	AÇO	N	DIAM (mm)	QUANT	C.UNIT (cm)	C.TOTAL (cm)
PM11	CA60	1	5.0	67	115	7705
	CA60	2	5.0	16	155	2480
	CA60	3	5.0	12	95	1140
	CA50	4	6.3	12	64	768
	CA50	5	8.0	12	78	936
	CA50	6	8.0	4	16	64
	CA50	7	16.0	4	657	2628

RESUMO DO AÇO

AÇO	DIAM (mm)	C.TOTAL (m)	PESO + 10% (kg)
CA50	6.3	7.7	2.1
	8.0	10.7	4.7
CA60	5.0	26.3	45.6
	5.0	113.3	19.2
PESO TOTAL (kg)			
CA50		52	
CA60		19.2	
Volume de concreto (C-30) = 0.67 m³			

RELAÇÃO DO AÇO

ELEMENTO	AÇO	N	DIAM (mm)	QUANT	C.UNIT (cm)	C.TOTAL (cm)
PM12	CA60	1	5.0	67	115	7705
	CA60	2	5.0	8	215	1720
	CA60	3	5.0	18	95	1710
	CA60	4	5.0	8	155	1240
	CA50	5	6.3	18	64	1152
	CA50	6	8.0	6	95	510
	CA50	7	8.0	6	16	96
	CA50	8	8.0	3	85	255
	CA50	9	12.5	4	657	2628

RESUMO DO AÇO

AÇO	DIAM (mm)	C.TOTAL (m)	PESO + 10% (kg)
CA50	6.3	11.5	3.1
	8.0	10.7	4.7
CA60	5.0	26.3	27.8
	5.0	123.8	21
PESO TOTAL (kg)			
CA50		36.8	
CA60		21	
Volume de concreto (C-30) = 0.71 m³			

RELAÇÃO DO AÇO

ELEMENTO	AÇO	N	DIAM (mm)	QUANT	C.UNIT (cm)	C.TOTAL (cm)
PM14	CA60	1	5.0	67	115	7705
	CA60	2	5.0	16	155	2480
	CA60	3	5.0	18	95	1710
	CA60	4	5.0	4	215	860
	CA50	5	6.3	18	64	1152
	CA50	6	8.0	13	78	1014
	CA50	7	8.0	6	16	96
	CA50	8	8.0	3	85	255
	CA50	9	12.5	4	657	2628

RESUMO DO AÇO

AÇO	DIAM (mm)	C.TOTAL (m)	PESO + 10% (kg)
CA50	6.3	11.5	3.1
	8.0	13.7	5.9
CA60	5.0	26.3	27.8
	5.0	127.5	21.6
PESO TOTAL (kg)			
CA50		36.9	
CA60		21.6	
Volume de concreto (C-30) = 0.71 m³			

RELAÇÃO DO AÇO

ELEMENTO	AÇO	N	DIAM (mm)	QUANT	C.UNIT (cm)	C.TOTAL (cm)
PM15	CA60	1	5.0	67	115	7705
	CA60	2	5.0	16	155	2480
	CA60	3	5.0	18	95	1710
	CA60	4	5.0	4	215	860
	CA50	5	6.3	18	64	1152
	CA50	6	8.0	12	78	936
	CA50	7	8.0	6	16	96
	CA50	8	8.0	3	85	255
	CA50	9	12.5	4	657	2628

RESUMO DO AÇO

AÇO	DIAM (mm)	C.TOTAL (m)	PESO + 10% (kg)
CA50	6.3	11.5	3.1
	8.0	12.9	5.6
CA60	5.0	26.3	27.8
	5.0	127.5	21.6
PESO TOTAL (kg)			
CA50		36.9	
CA60		21.6	
Volume de concreto (C-30) = 0.71 m³			

COORDENAÇÃO ALDORE GUERINO FERREIRA

RESPONSÁVEL TÉCNICO E AUTOR: ENG. CIVIL FLAVIA BARBOSA CREA MG 187.820

PROJETO: CONSTRUÇÃO DA UNIDADE DE PRONTO ATENDIMENTO

ENDEREÇO: RUA PIRANGUINHO, B. SÃO JOÃO, POUSO ALEGRE - MINAS GERAIS

DISCIPLINA: ESTRUTURAL

FASE DO PROJETO: EXECUTIVO

FOLHA Nº: 58/72

DATA INICIAL: 31/01/2023 ESCALA: INDICADA REVISÃO: R01 ARQUIVO: DAC-PIPA-LUPA-EST-ROZ.DWG