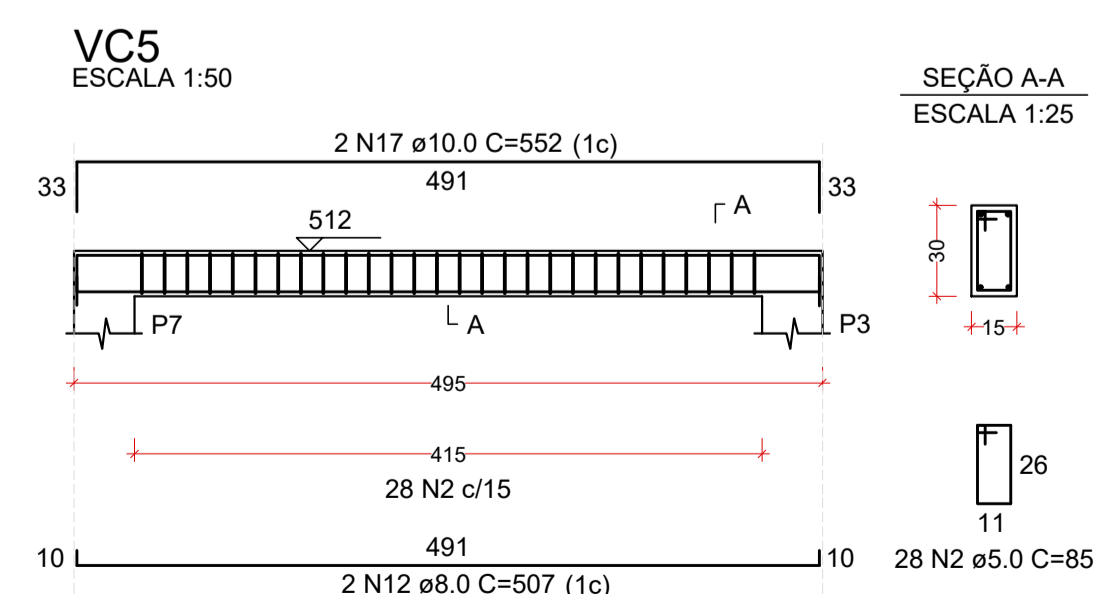
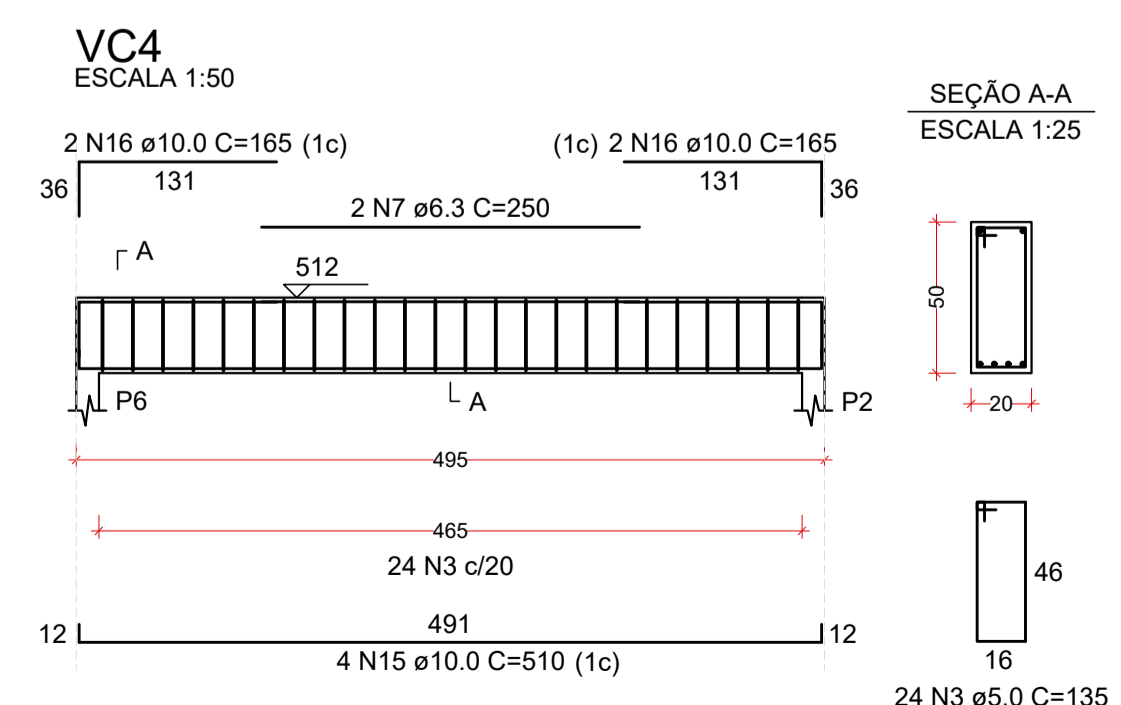
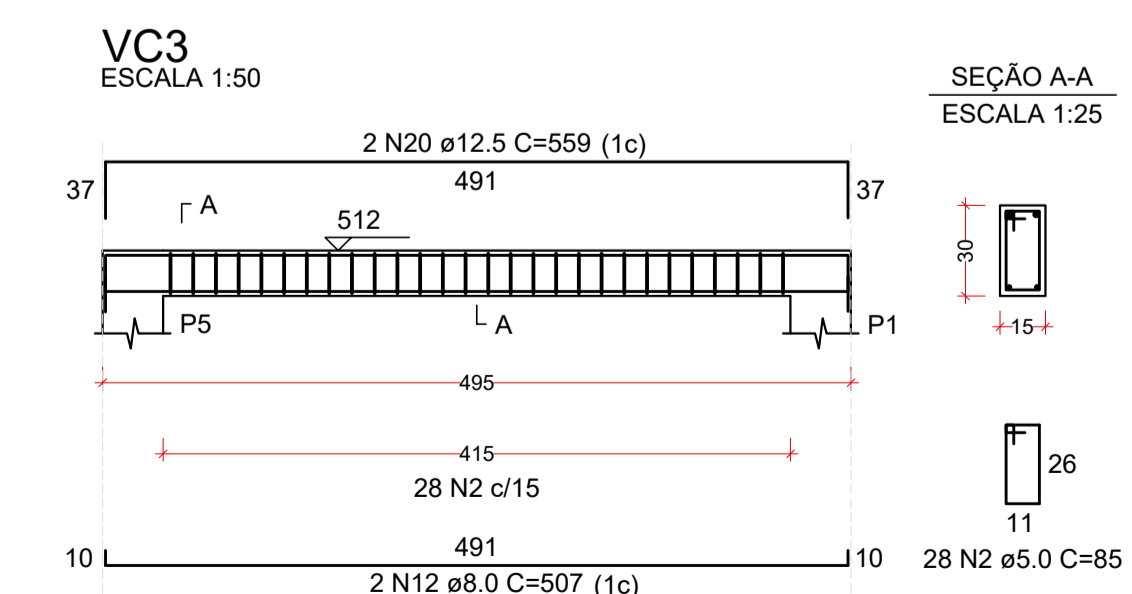
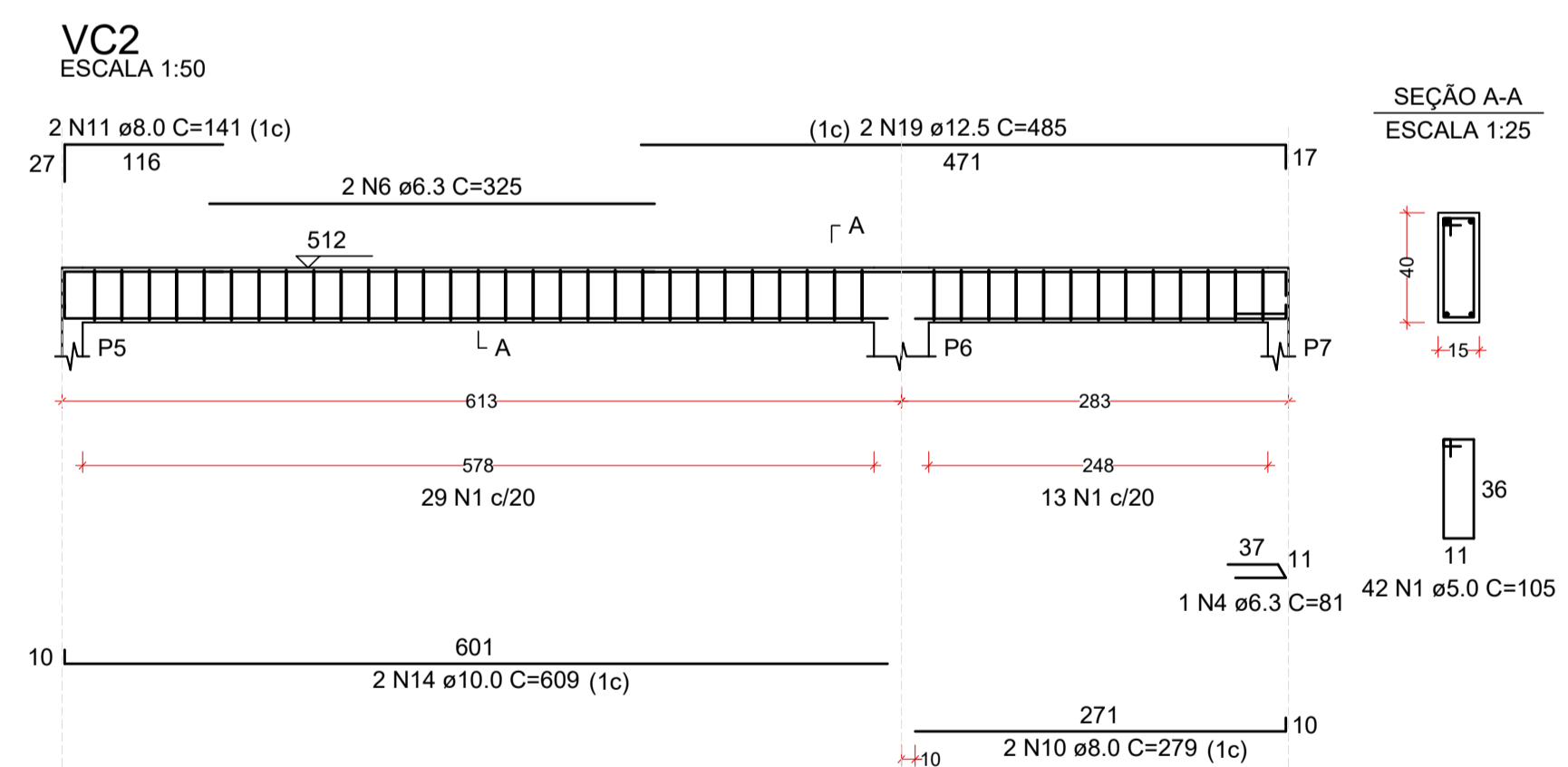
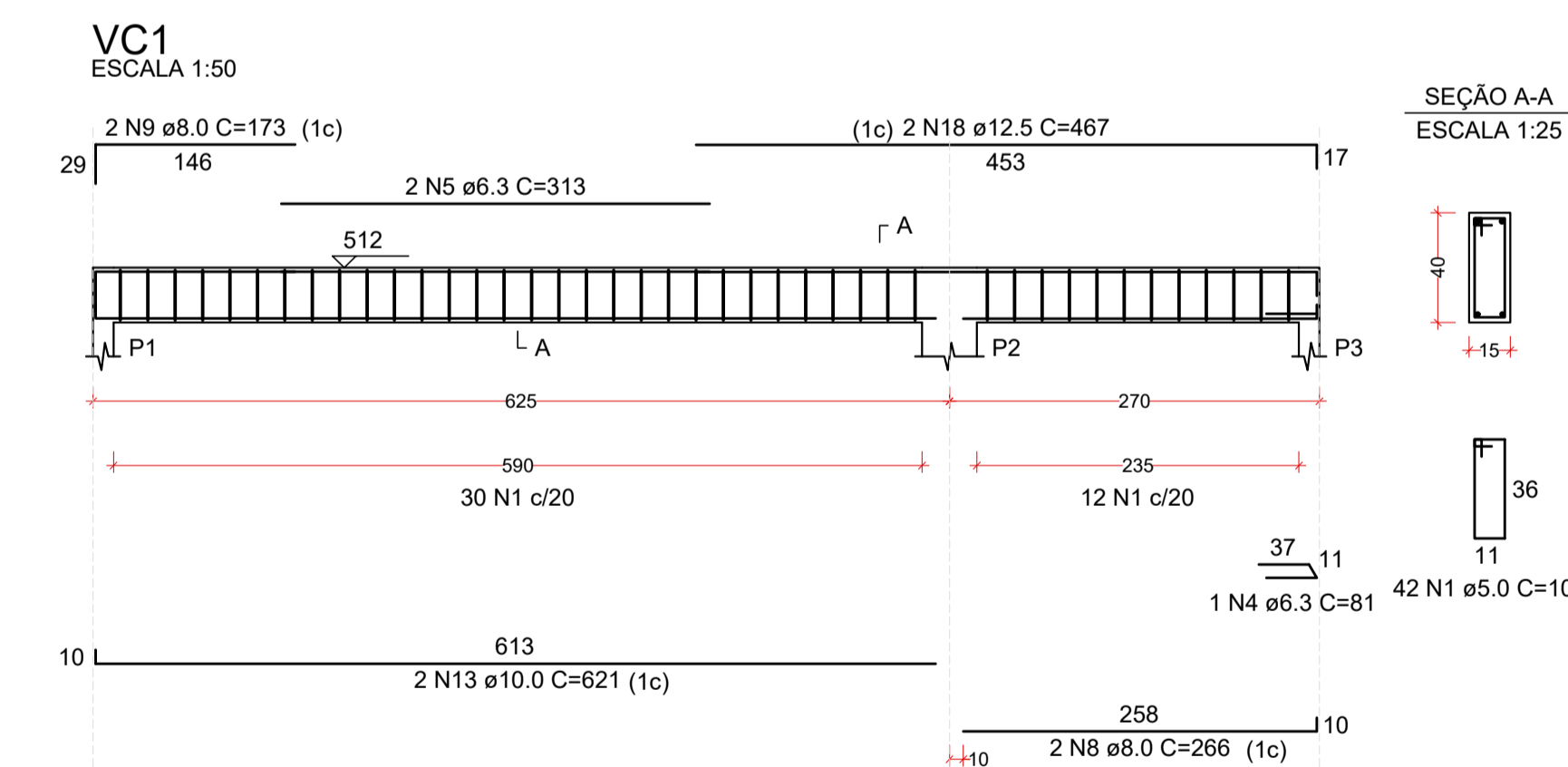
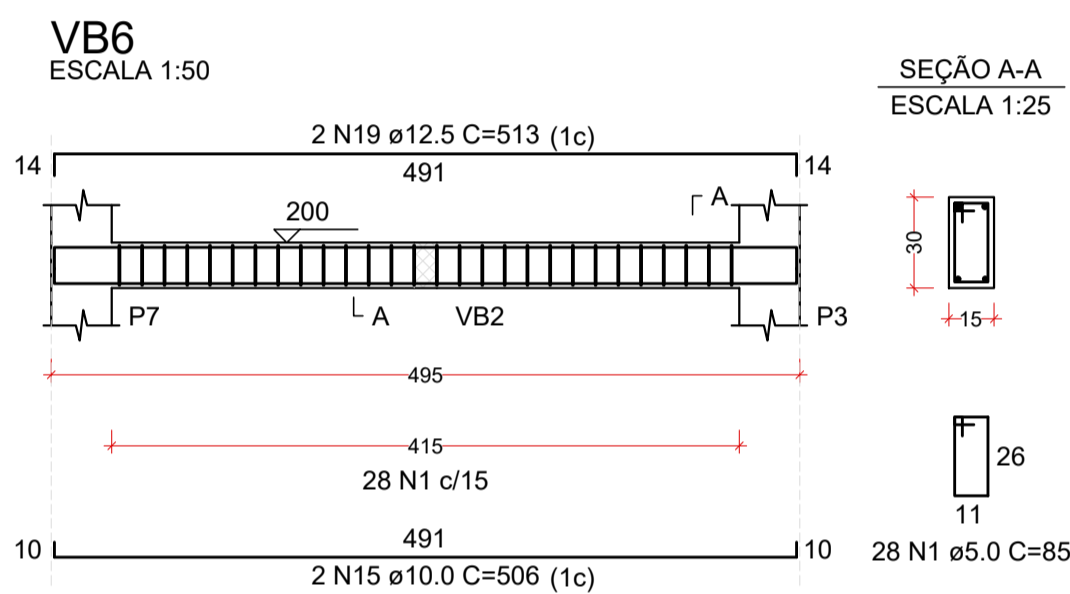
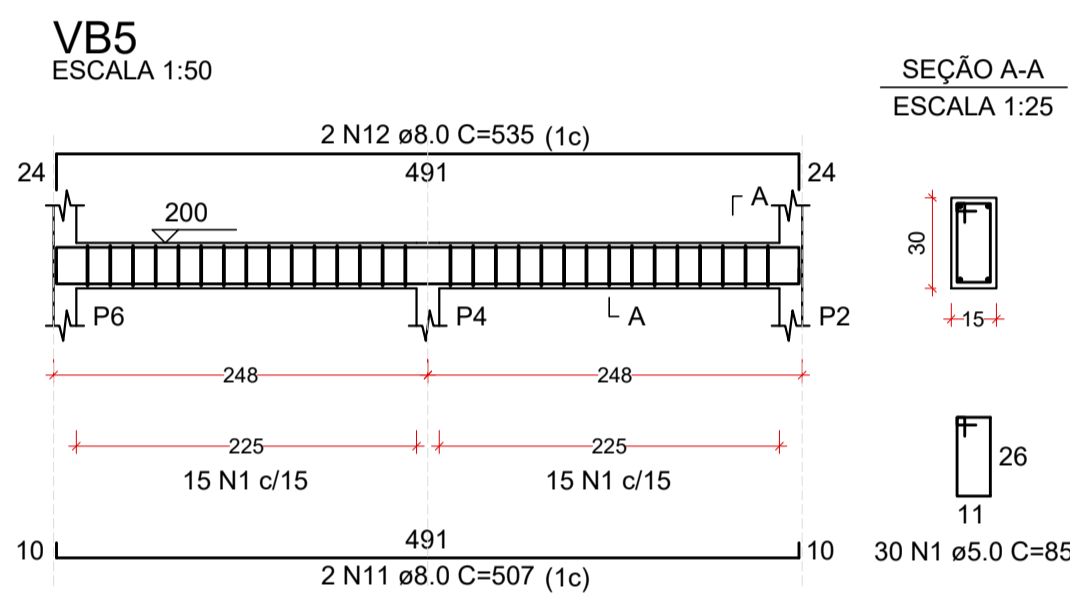
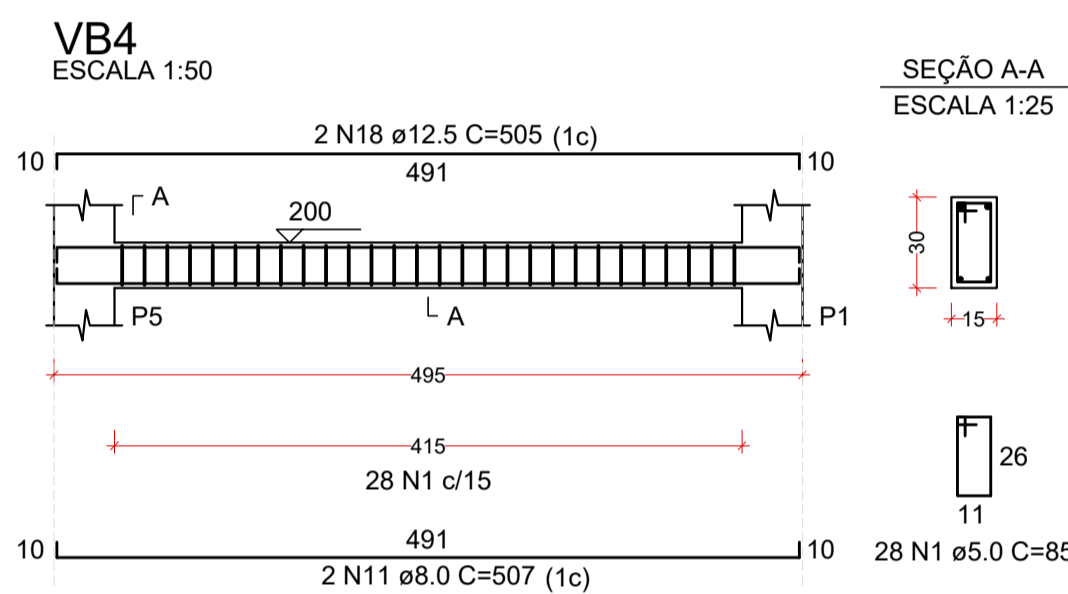
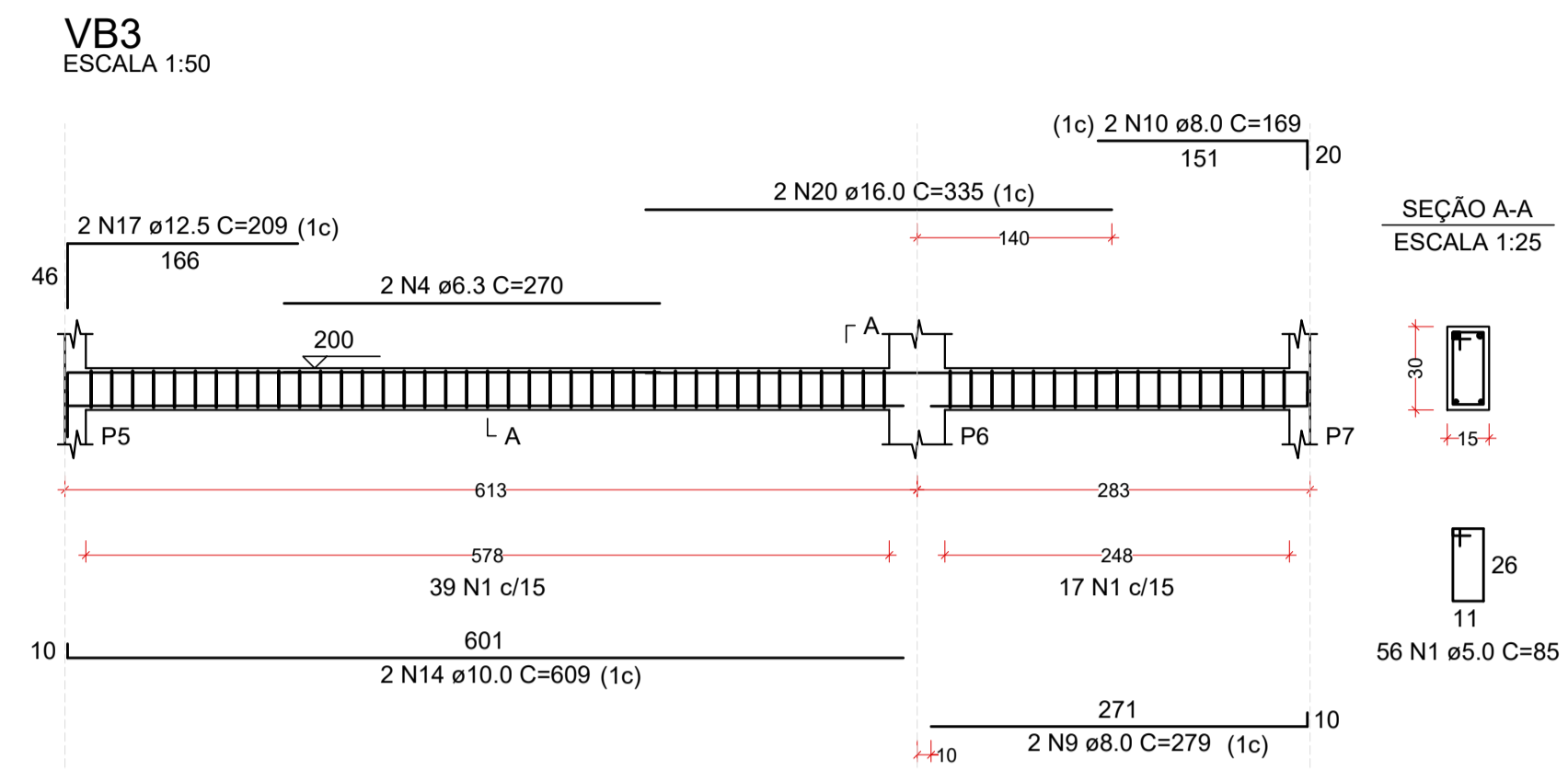
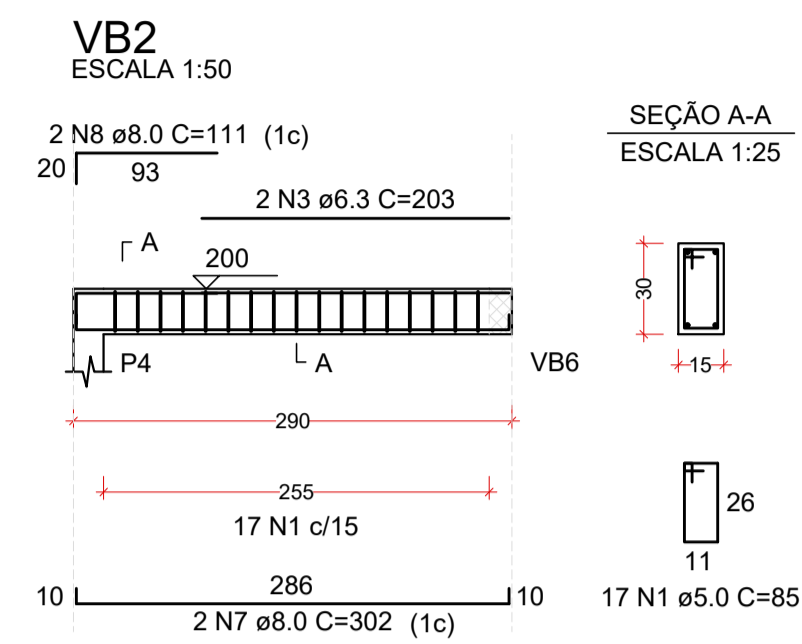
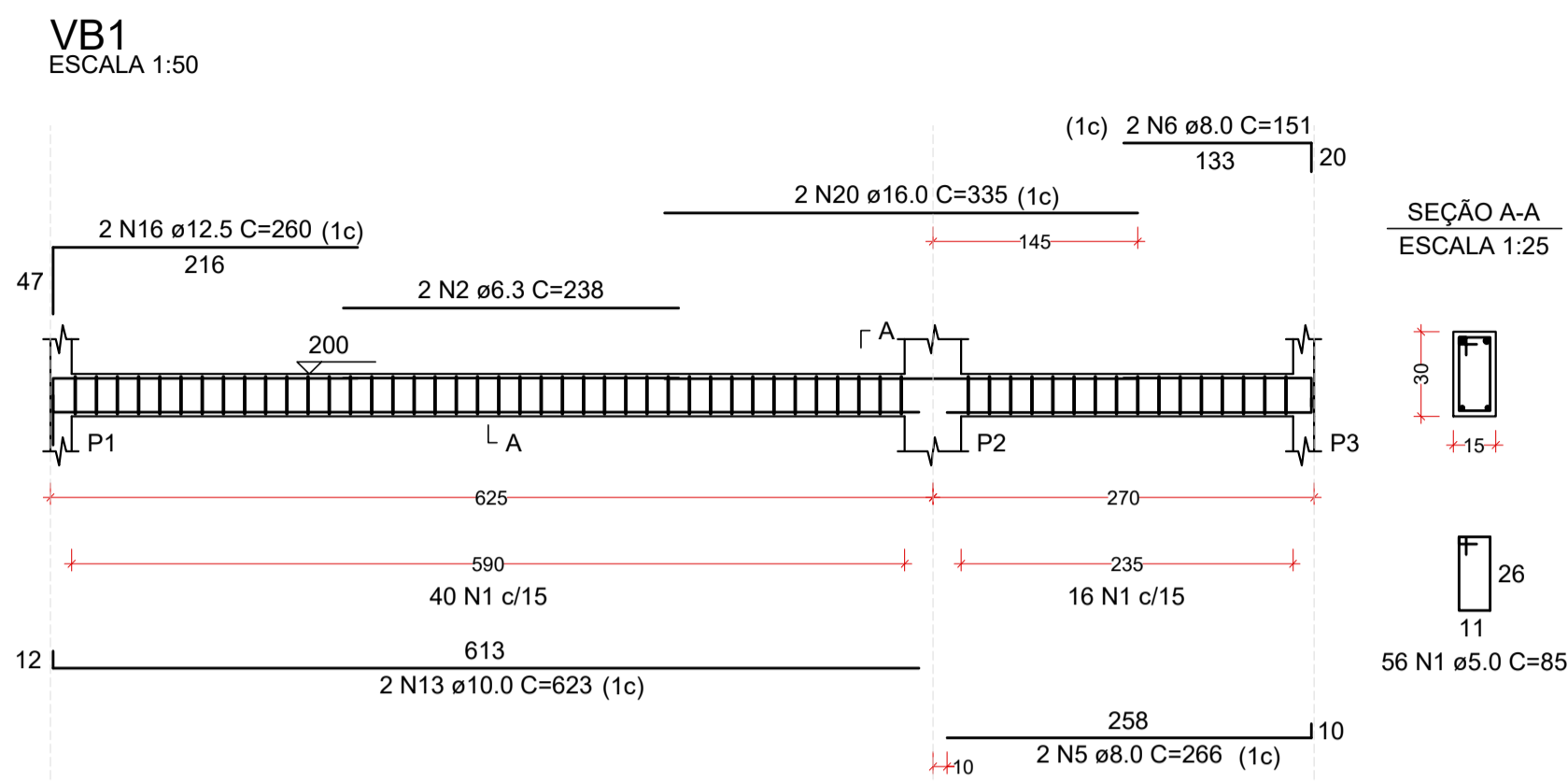


PROJETO ESTRUTURAL - CONSTRUÇÃO DA UNIDADE DE PRONTO ATENDIMENTO
ESCALA INDICADA



RELAÇÃO DO AÇO

VB1	VB2	VB3	VB4	VB5	VB6
AÇO	N	DIAM (mm)	QUANT	C.UNIT (cm)	C.TOTAL (cm)
CA60	1	5.0	215	85	18275
CA50	2	6.3	2	238	476
	3	6.3	2	203	406
	4	6.3	2	270	540
	5	8.0	2	266	532
	6	8.0	2	151	302
	7	8.0	2	302	604
	8	8.0	2	111	222
	9	8.0	2	279	558
	10	8.0	2	336	672
	11	8.0	4	507	2028
	12	8.0	2	535	1070
	13	10.0	2	623	1246
	14	10.0	2	609	1218
	15	10.0	2	506	1012
	16	12.5	2	260	520
	17	12.5	2	209	418
	18	12.5	2	505	1010
	19	12.5	2	513	1026
	20	16.0	4	335	1340

RESUMO DO AÇO

AÇO	DIAM (mm)	C.TOTAL (m)	PESO + 10% (kg)
CA50	6.3	14.2	3.8
	8.0	56.5	24.5
	10.0	34.8	23.6
	12.5	29.7	31.5
	16.0	13.4	23.3
	5.0	182.8	31
PESO TOTAL (kg)			
CA50			106.7
CA60			31

Volume de concreto (C-25) = 1.44 m³
Área de forma = 23.94 m²

RELAÇÃO DO AÇO

VC1	VC2	VC3	VC4	VC5	
AÇO	N	DIAM (mm)	QUANT	C.UNIT (cm)	C.TOTAL (cm)
CA60	1	5.0	84	105	8820
	2	5.0	56	85	4760
CA50	3	5.0	24	135	3240
	4	6.3	2	81	162
	5	6.3	2	313	626
	6	6.3	2	325	650
	7	6.3	2	250	500
	8	8.0	2	266	532
	9	8.0	2	173	346
	10	8.0	2	279	558
	11	8.0	2	141	282
	12	8.0	4	507	2028
	13	10.0	2	621	1242
	14	10.0	2	609	1218
	15	10.0	4	510	2040
	16	10.0	4	165	660
	17	10.0	2	552	1104
	18	12.5	2	467	934
	19	12.5	2	485	970
	20	12.5	2	559	1118

RESUMO DO AÇO

AÇO	DIAM (mm)	C.TOTAL (m)	PESO + 10% (kg)
CA50	6.3	19.4	5.2
	8.0	37.5	16.3
	10.0	62.6	42.5
	12.5	30.2	32
	5.0	168.2	28.5
PESO TOTAL (kg)			
CA50			96
CA60			28.5

Volume de concreto (C-25) = 1.83 m³
Área de forma = 23.39 m²

REV. 01	28/04/23	CONFORME SOLICITAÇÕES DA VIGILÂNCIA SANITÁRIA	DAC
REV. 00	31/01/2023	EMIÇÃO INICIAL	DAC
REVISÃO	DATA	DESCRIÇÃO	RESP.



DAC Engenharia
Rua Miguel Vianna, nº 81, 2º Andar
Bairro Morro Chic
CEP: 37500-080 - Itajubá / MG
Tel: (35) 3623-8846
www.dacengenharia.com.br

COORDENAÇÃO: ALOISIO CAETANO FERREIRA
RESPONSÁVEL TÉCNICO E AUTOR: ENGR. CIVIL FLÁVIA CRISTINA BARBOSA CREA-MG-187.842/D

CONSTRUÇÃO DA UNIDADE DE PRONTO ATENDIMENTO

ENDEREÇO: RUA PIRANGUINHO, B. SÃO JOÃO
POUSO ALEGRE - MINAS GERAIS

ASSUNTO: PROJETO ESTRUTURAL DE CONCRETO ARMADO
DETALHAMENTO DAS VIGAS BALDRAME E VIGAS COBERTURA

DISCIPLINA: **ESTRUTURAL**
FASE DO PROJETO: **EXECUTIVO**
FOLHA Nº: **04/05**

DATA INICIAL	ESCALA	REVISÃO	ARQUIVO
31/01/2023	INDICADA	R01	DAC-PMPA-UPA-PE-EST-EC1-R01.DWG