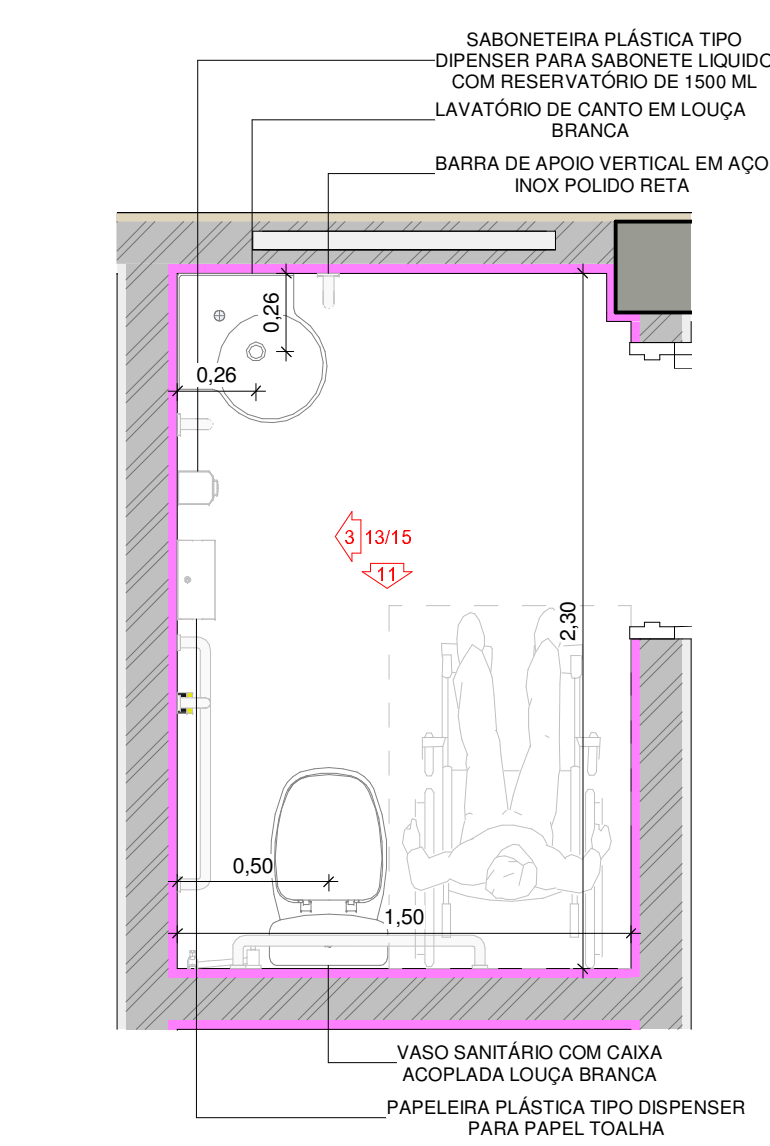
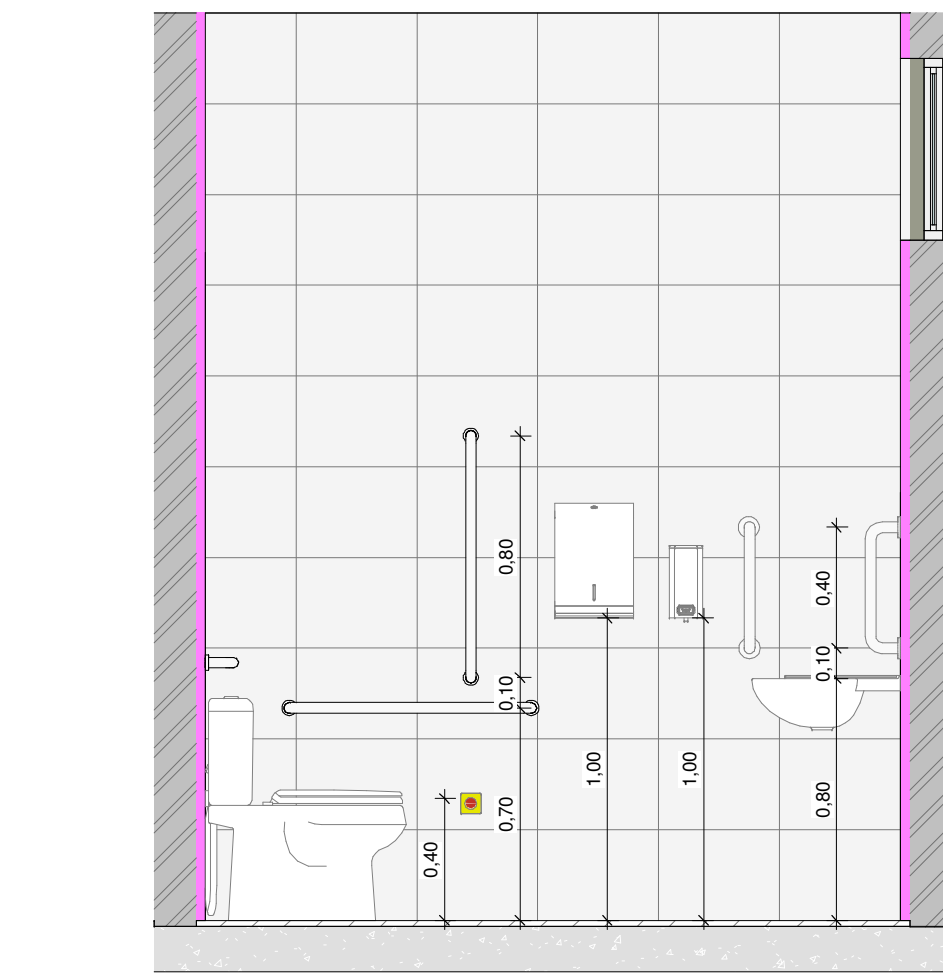


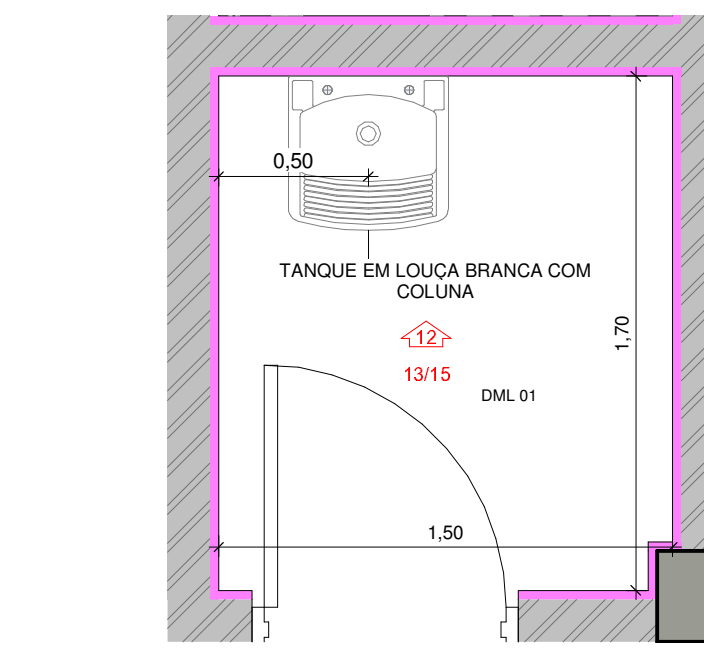
1 DETALHE I.S P.C.D. MASC. E FEM.
1:25



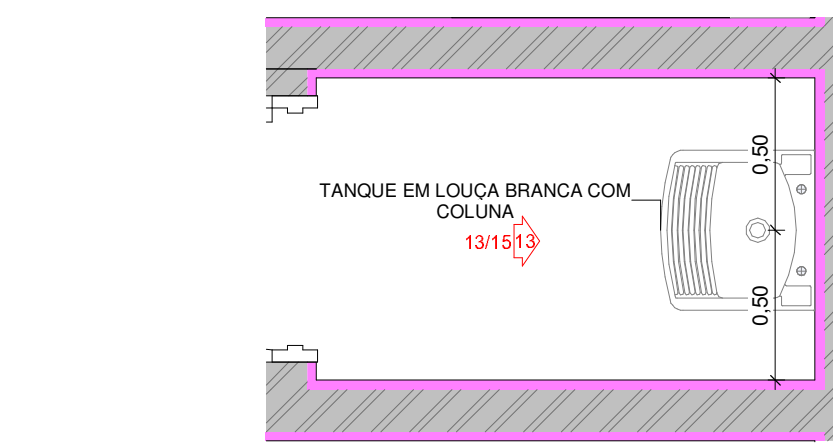
2 DETALHE I.S COLETA
1:25



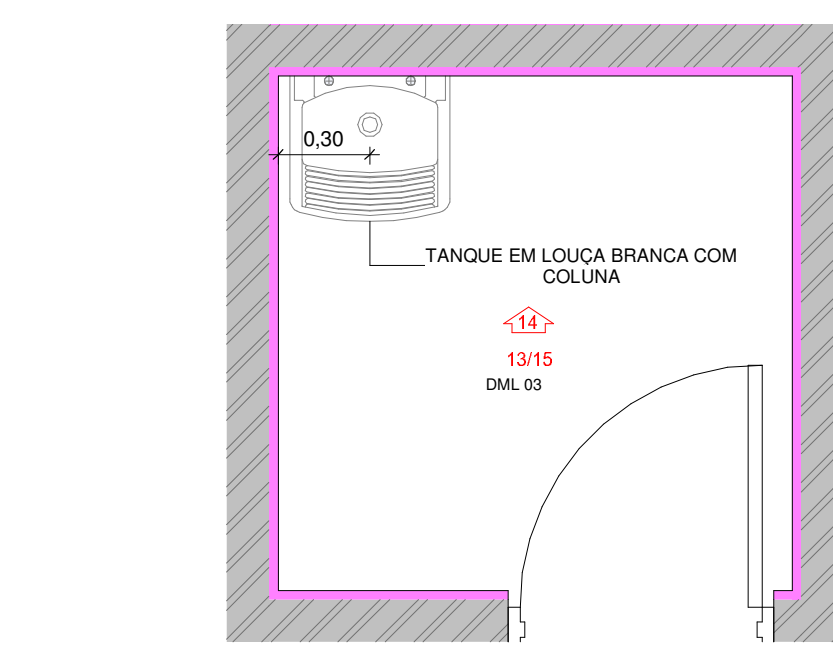
3 DETALHE 1 - I.S COLETA
1:25



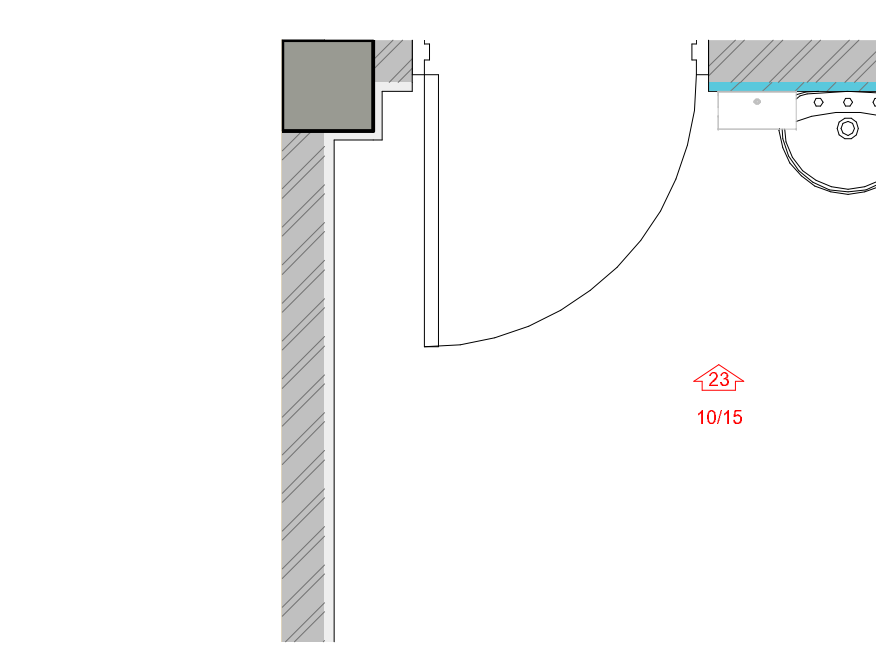
4 DETALHE DML 01
1:25



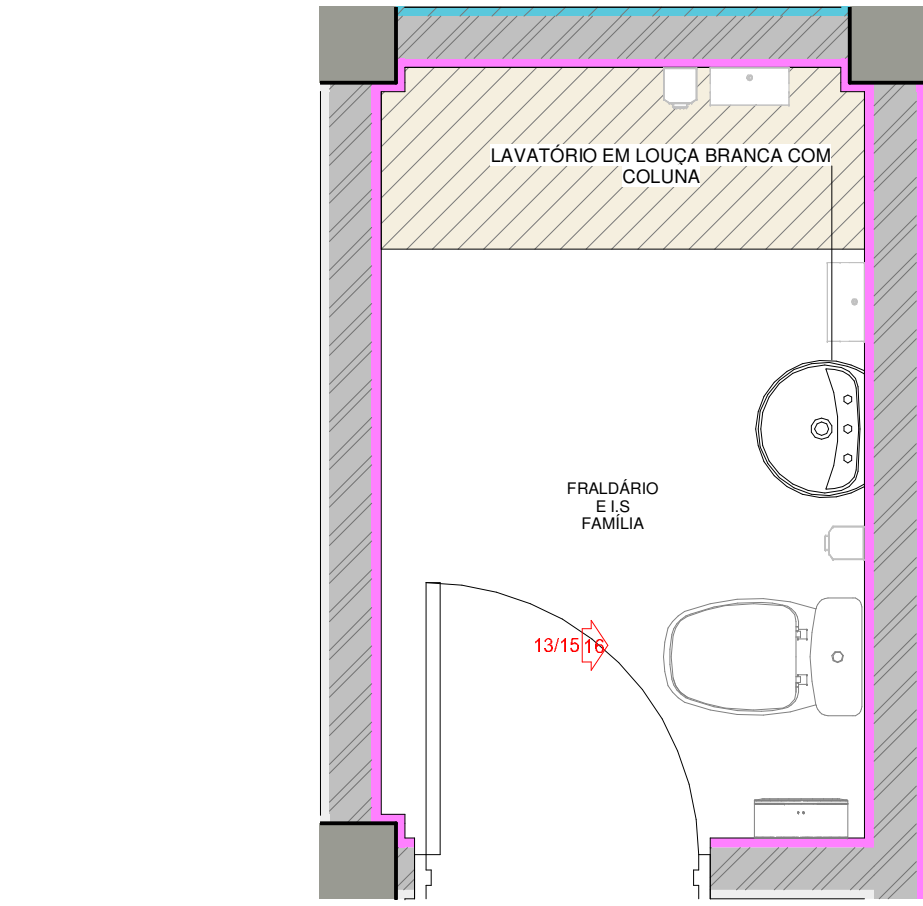
5 DETALHE DML 02
1:25



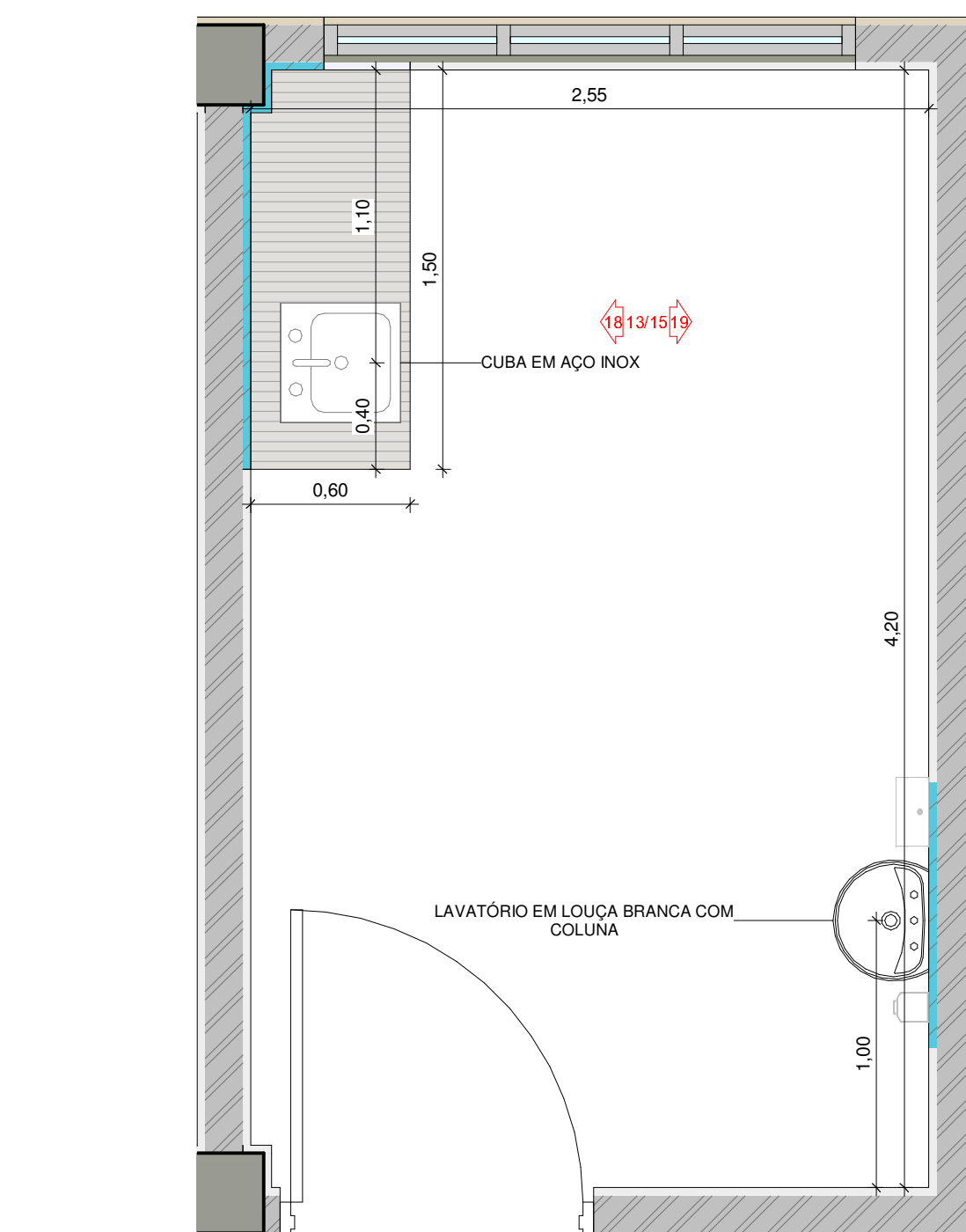
6 DETALHE DML 03
1:25



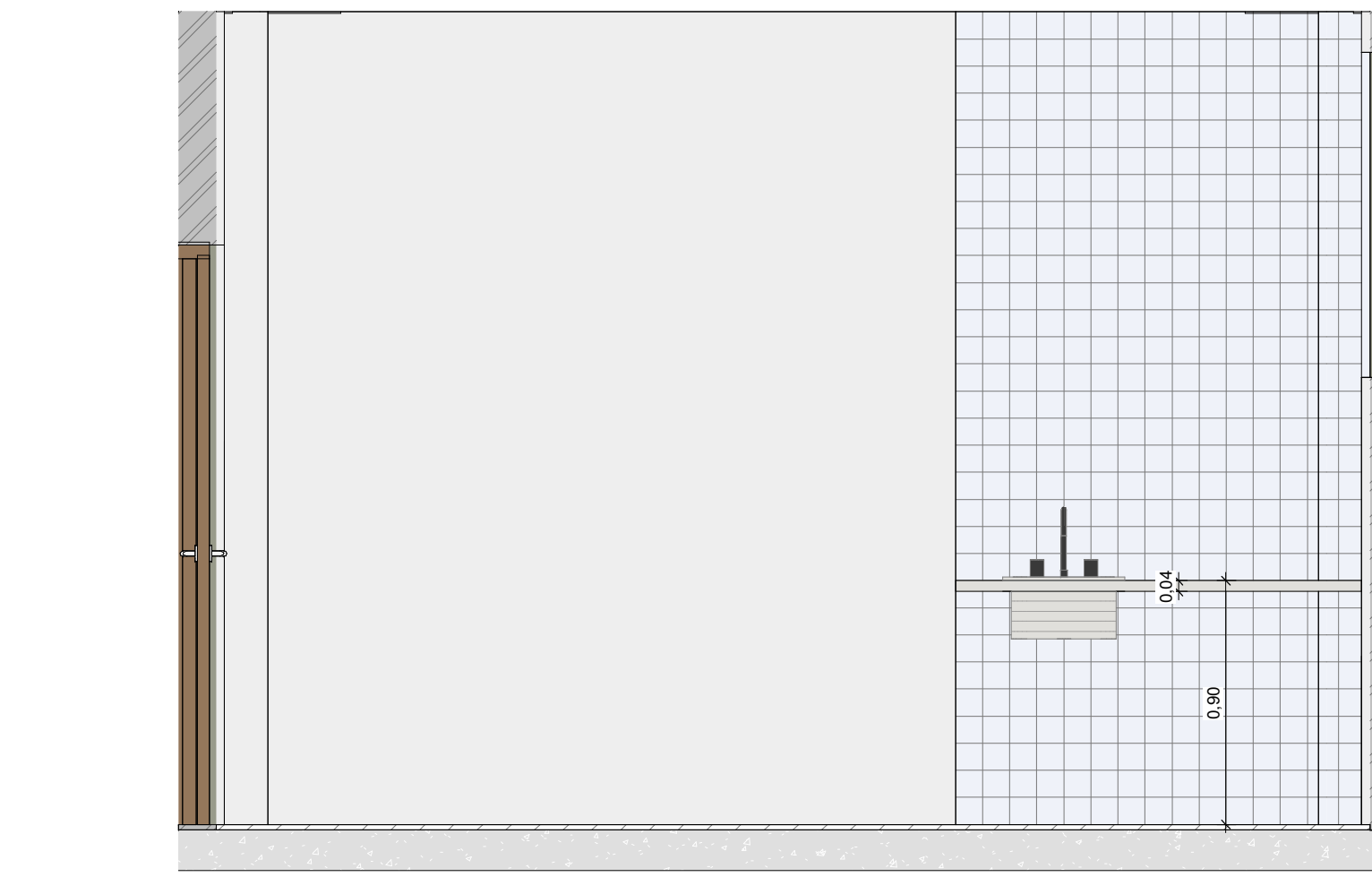
7 DETALHE SALA DE UTILIDADES 01
1:25



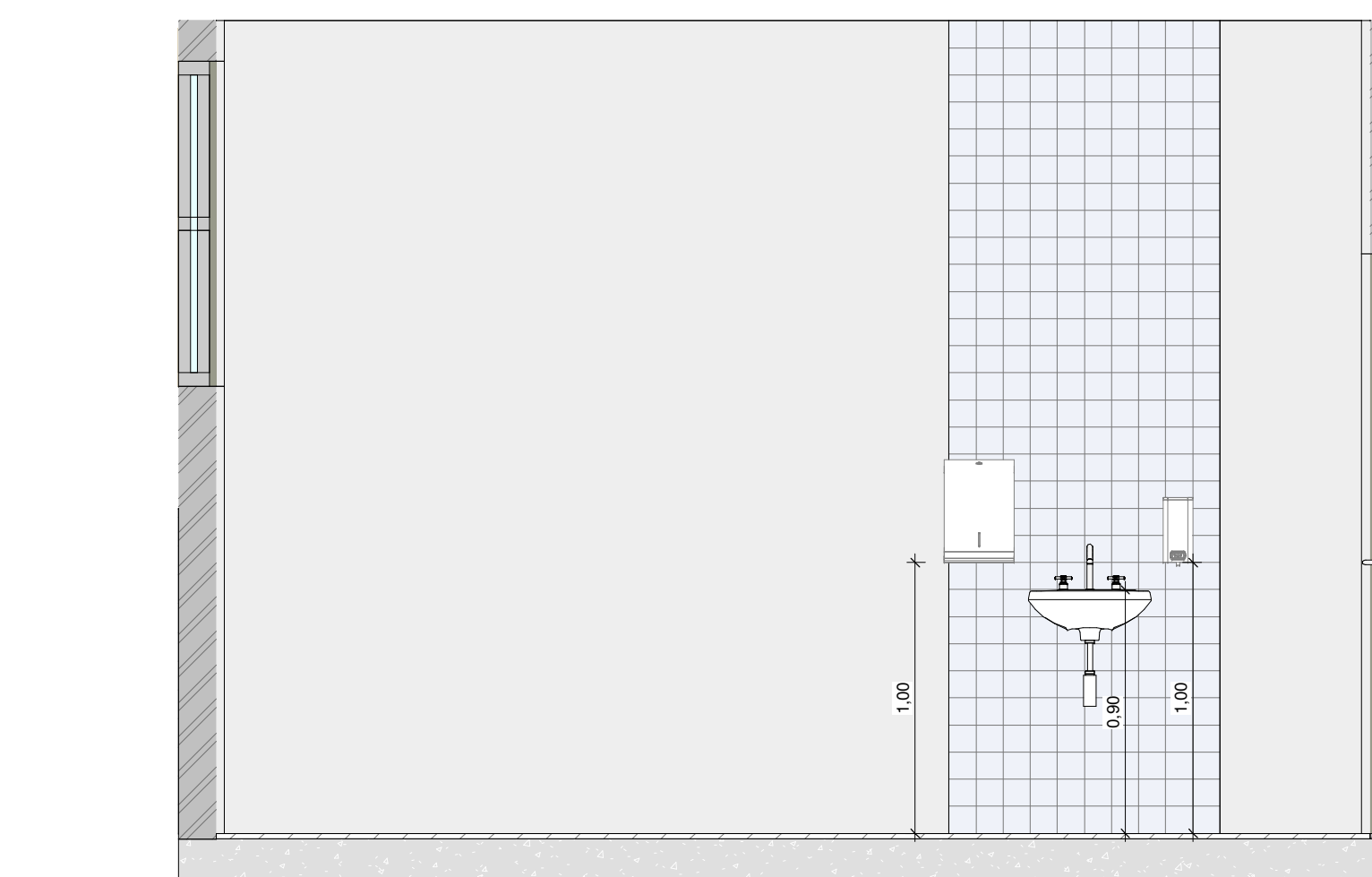
8 DETALHE FRALDÁRIO
1:25



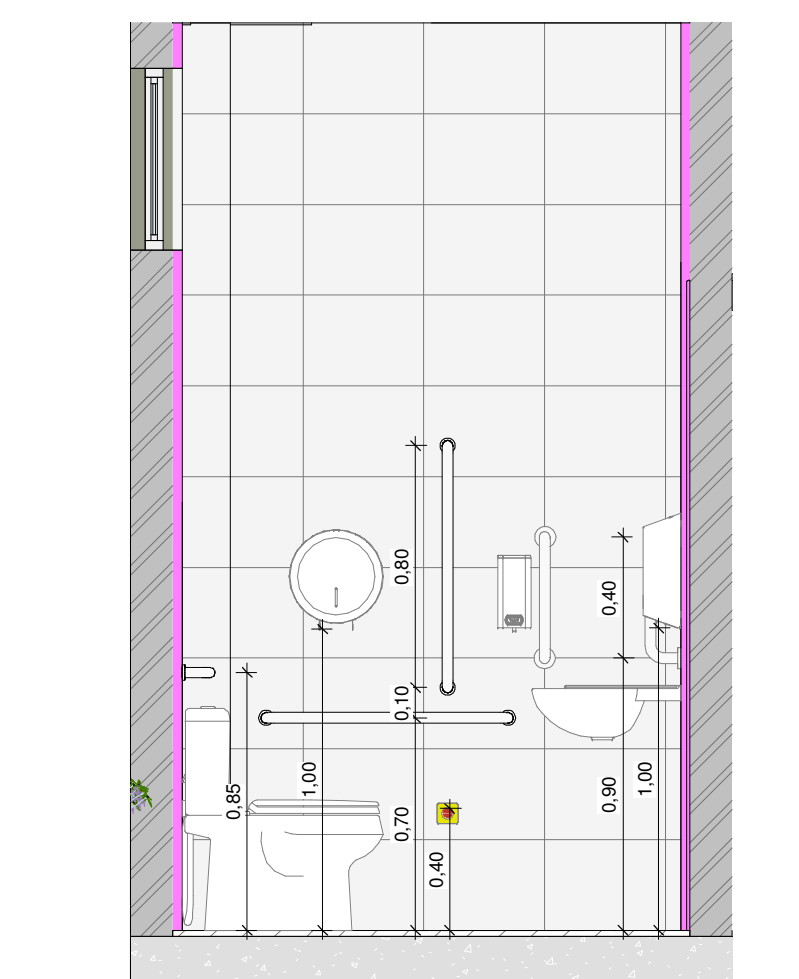
17 DETALHE SALA DE GESSO
1:25



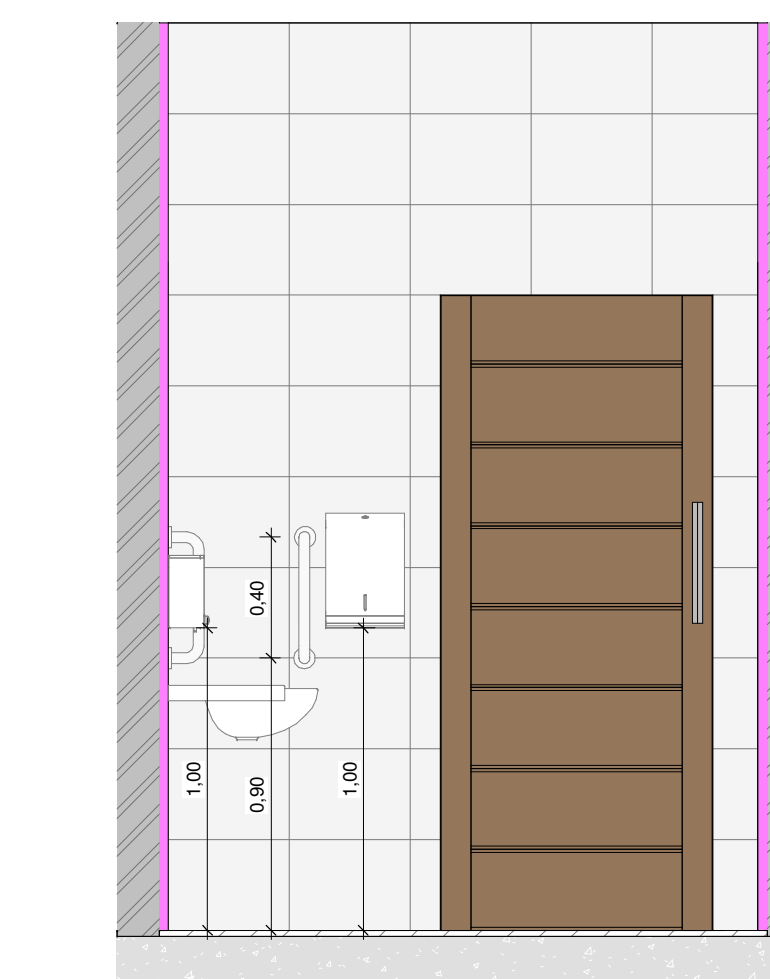
18 DETALHE 1 - SALA DE GESSO
1:25



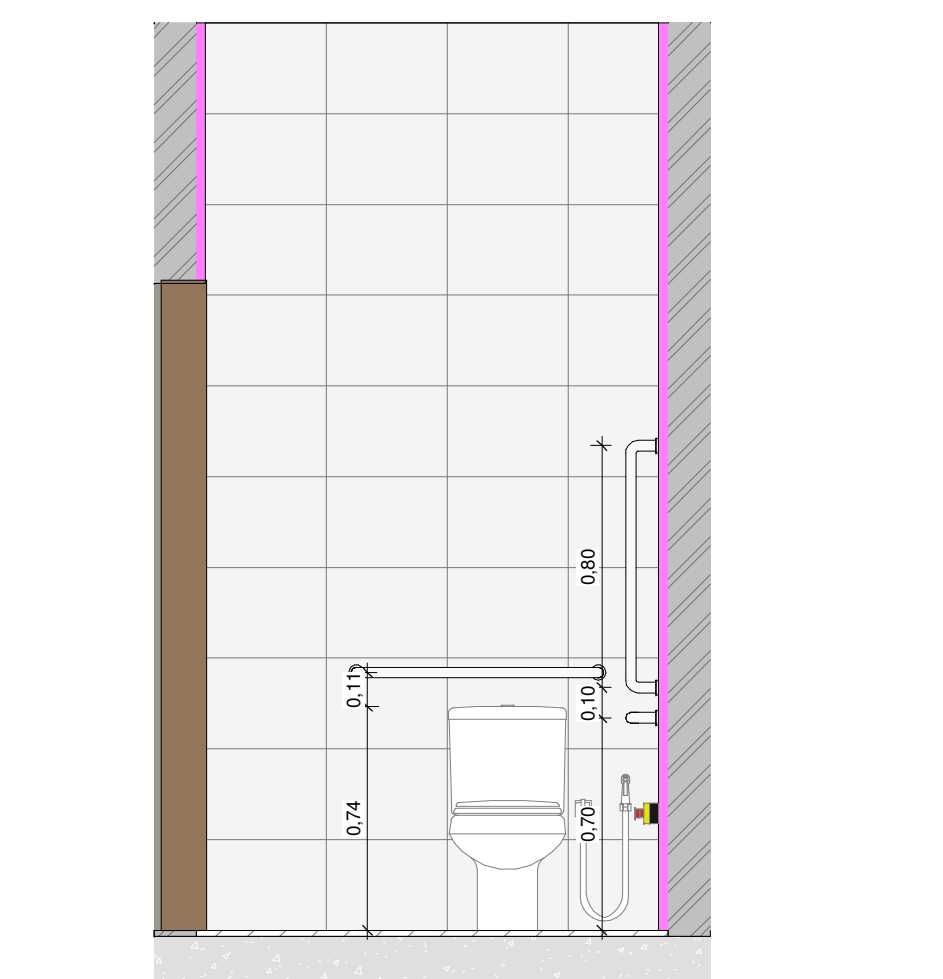
19 DETALHE 2 - SALA DE GESSO
1:25



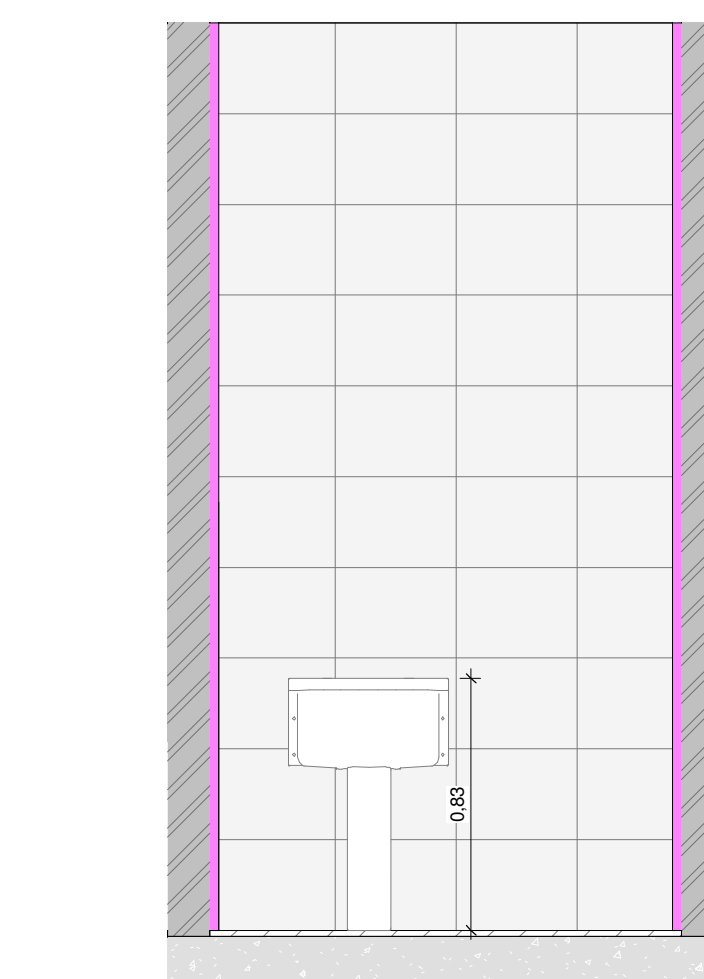
9 DETALHE 1 - I.S PNE MASC. E FEM.
1:25



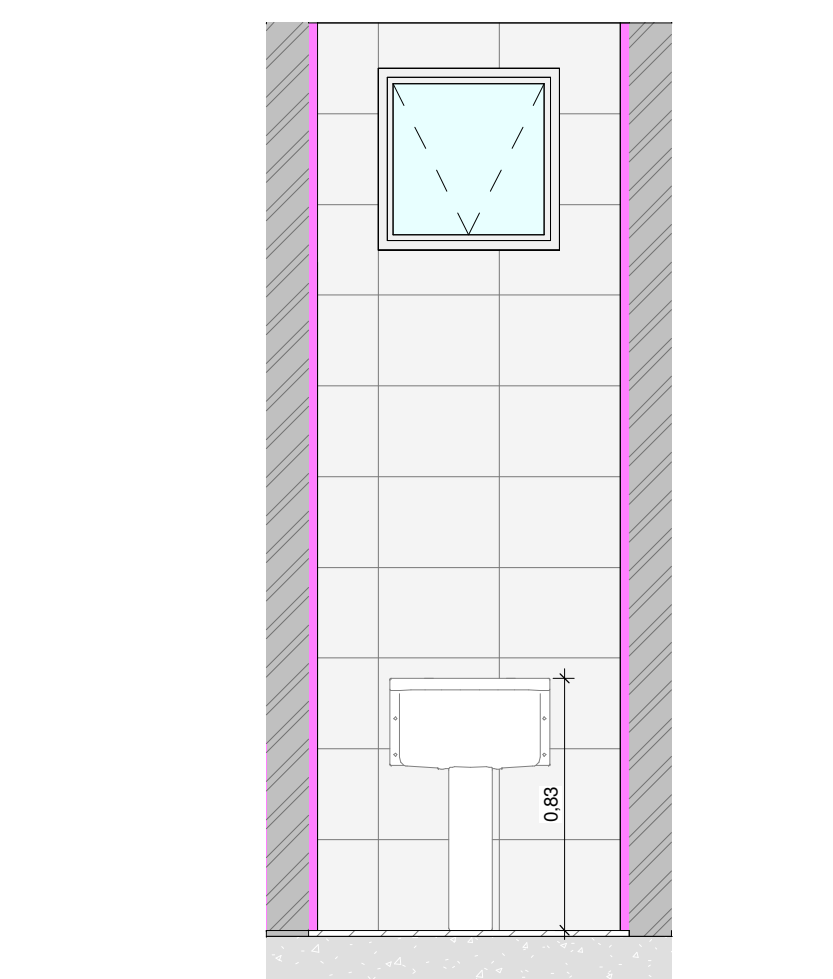
10 DETALHE 2 - I.S PNE MASC. E FEM.
1:25



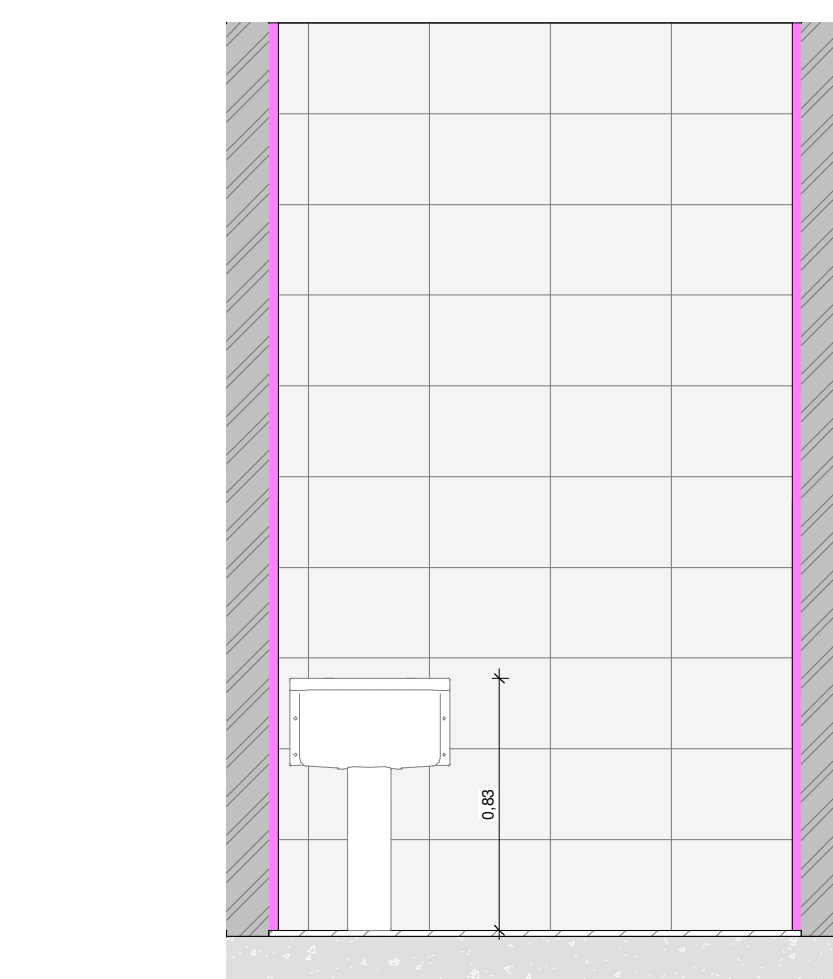
11 DETALHE 2 - I.S COLETA
1:25



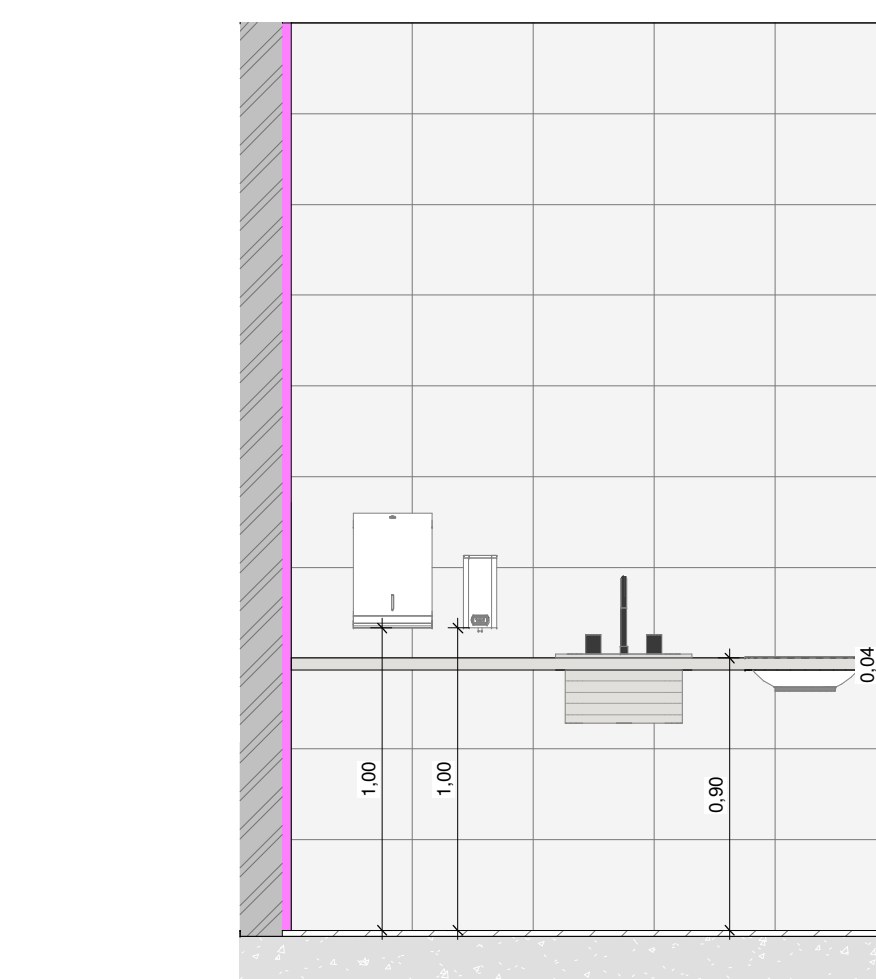
12 DETALHE - DML 01
1:25



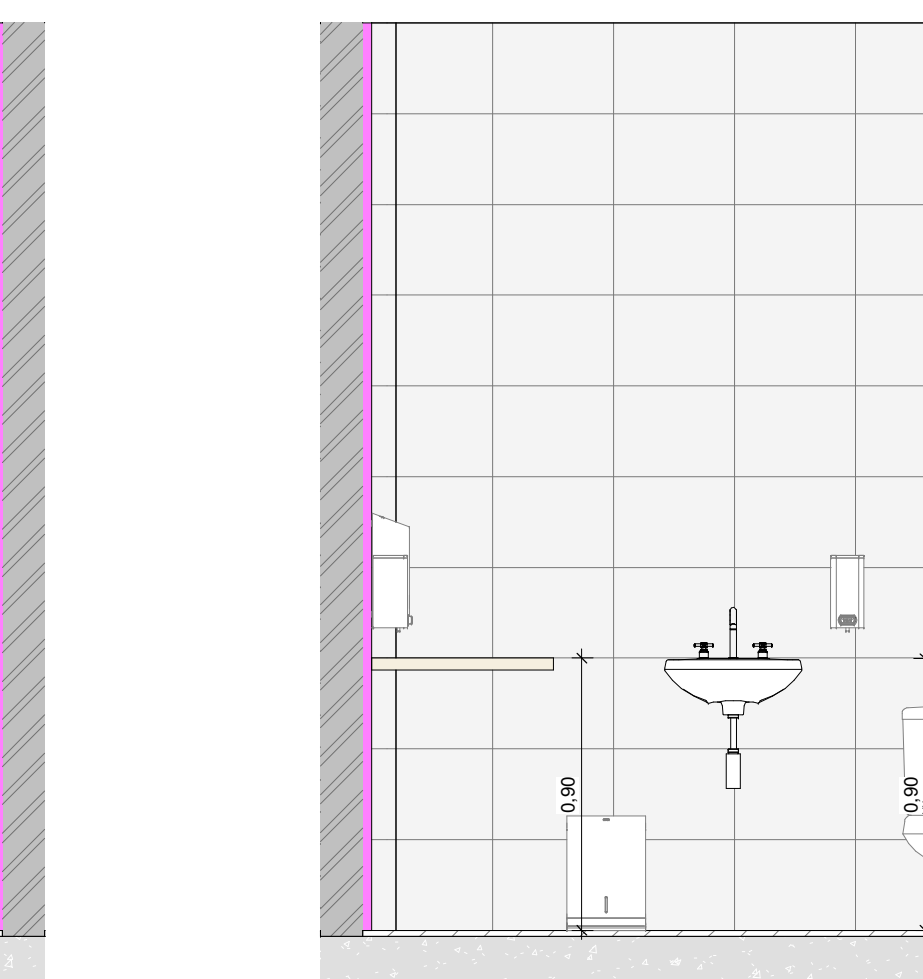
13 DETALHE - DML 02
1:25



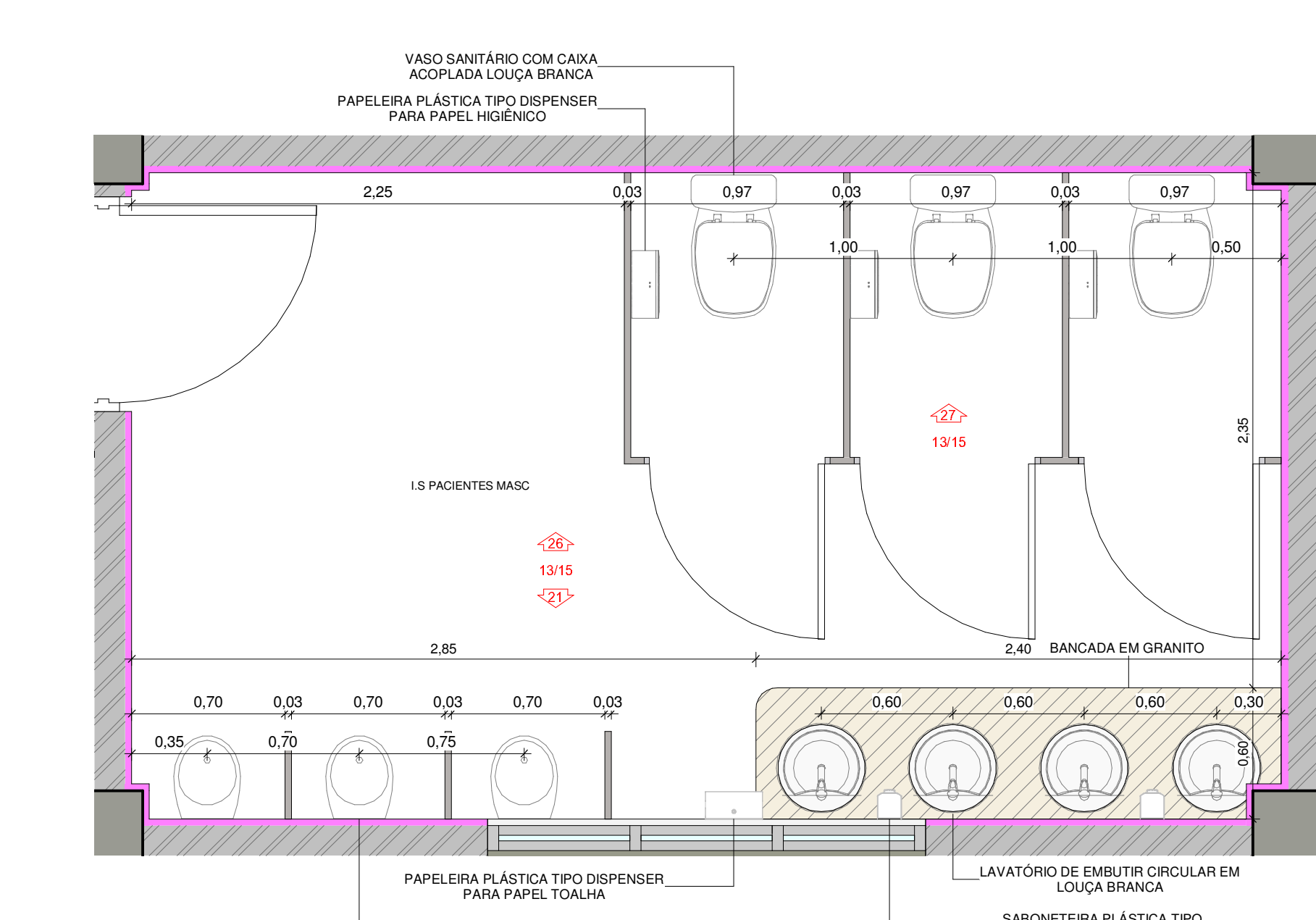
14 DETALHE - DML 03
1:25



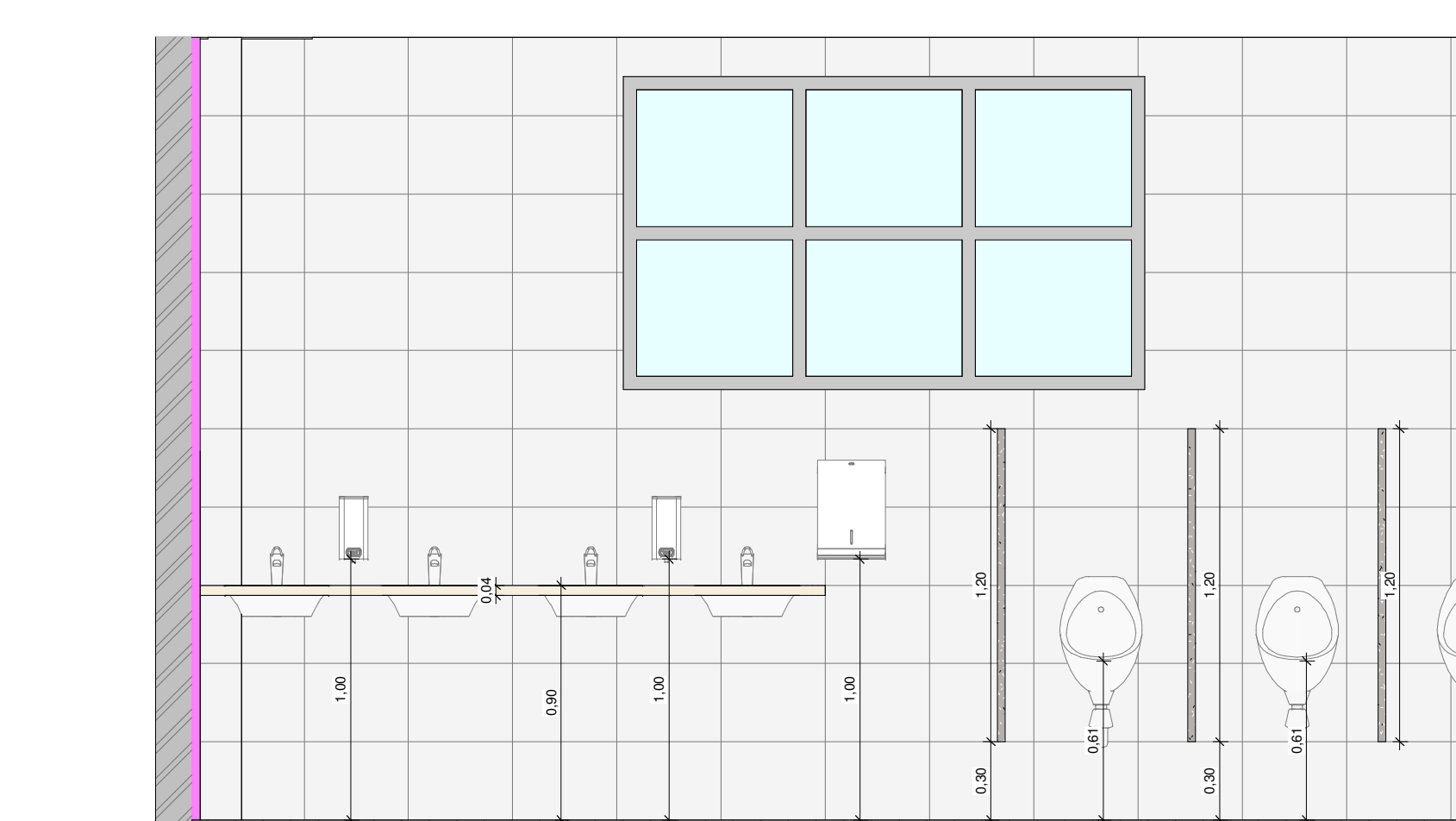
15 DETALHE - SALA DE UTILIDADES 01
1:25



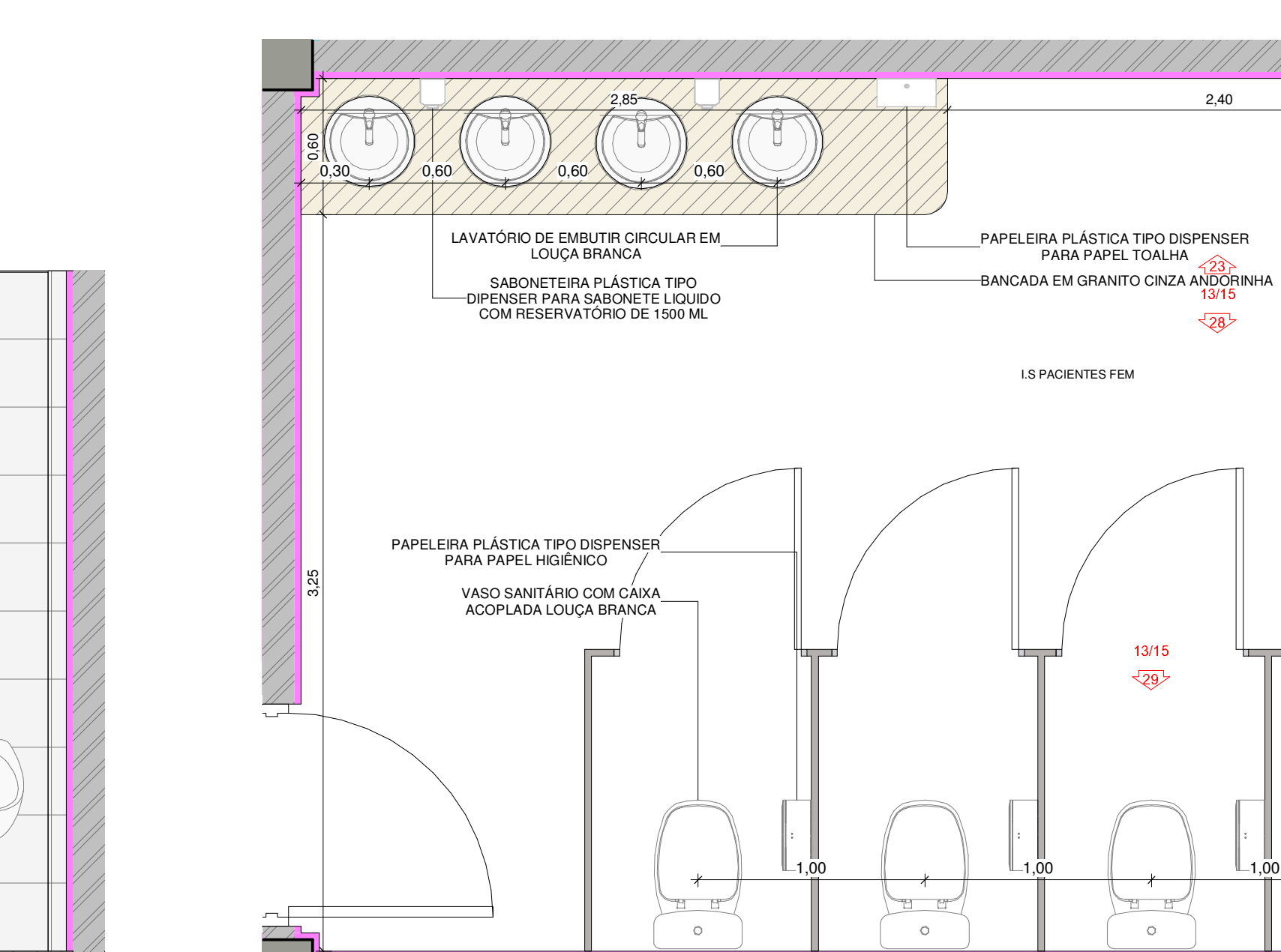
16 DETALHE - DML 05
1:25



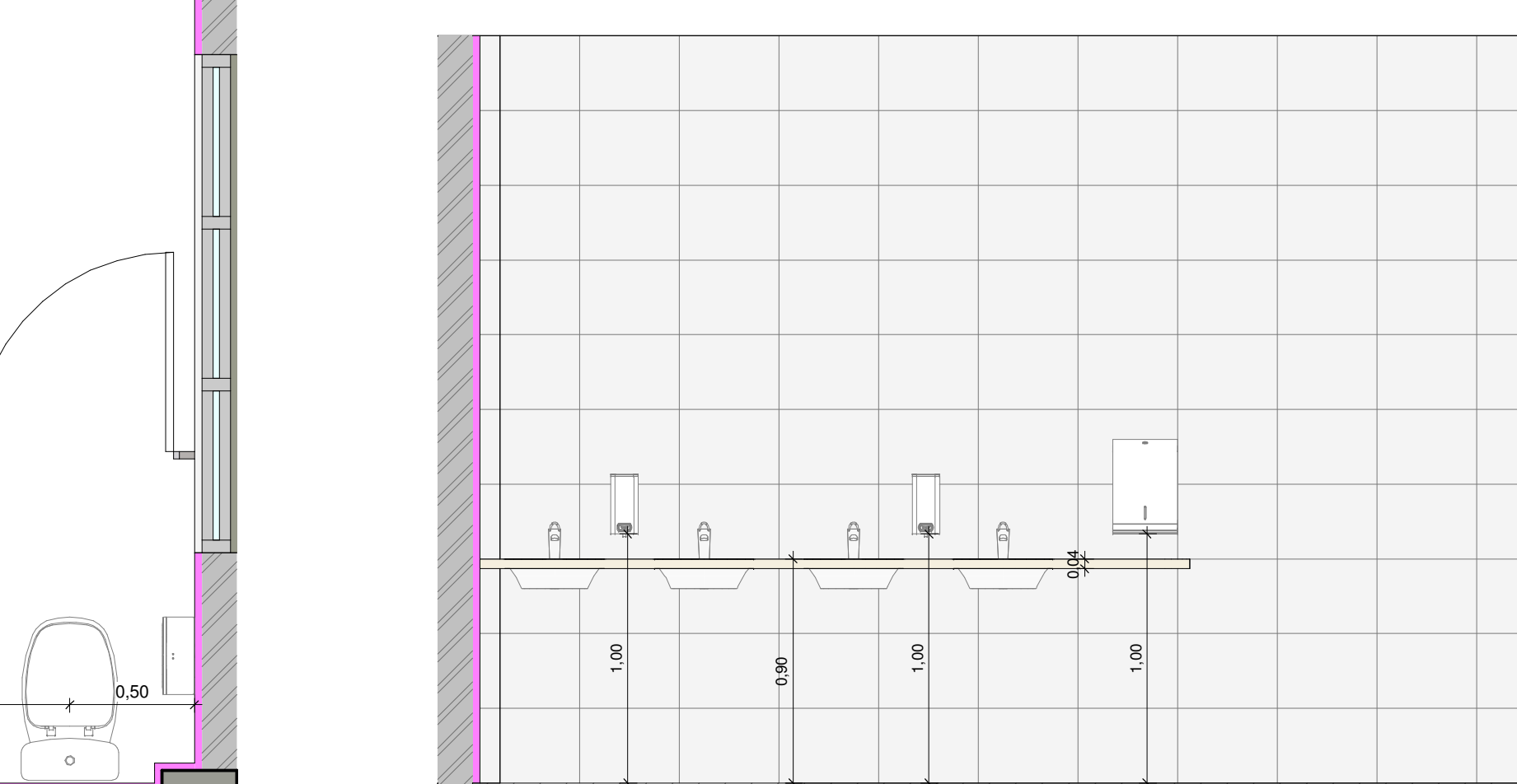
20 DETALHE I.S PACIENTES MASCULINO
1:25



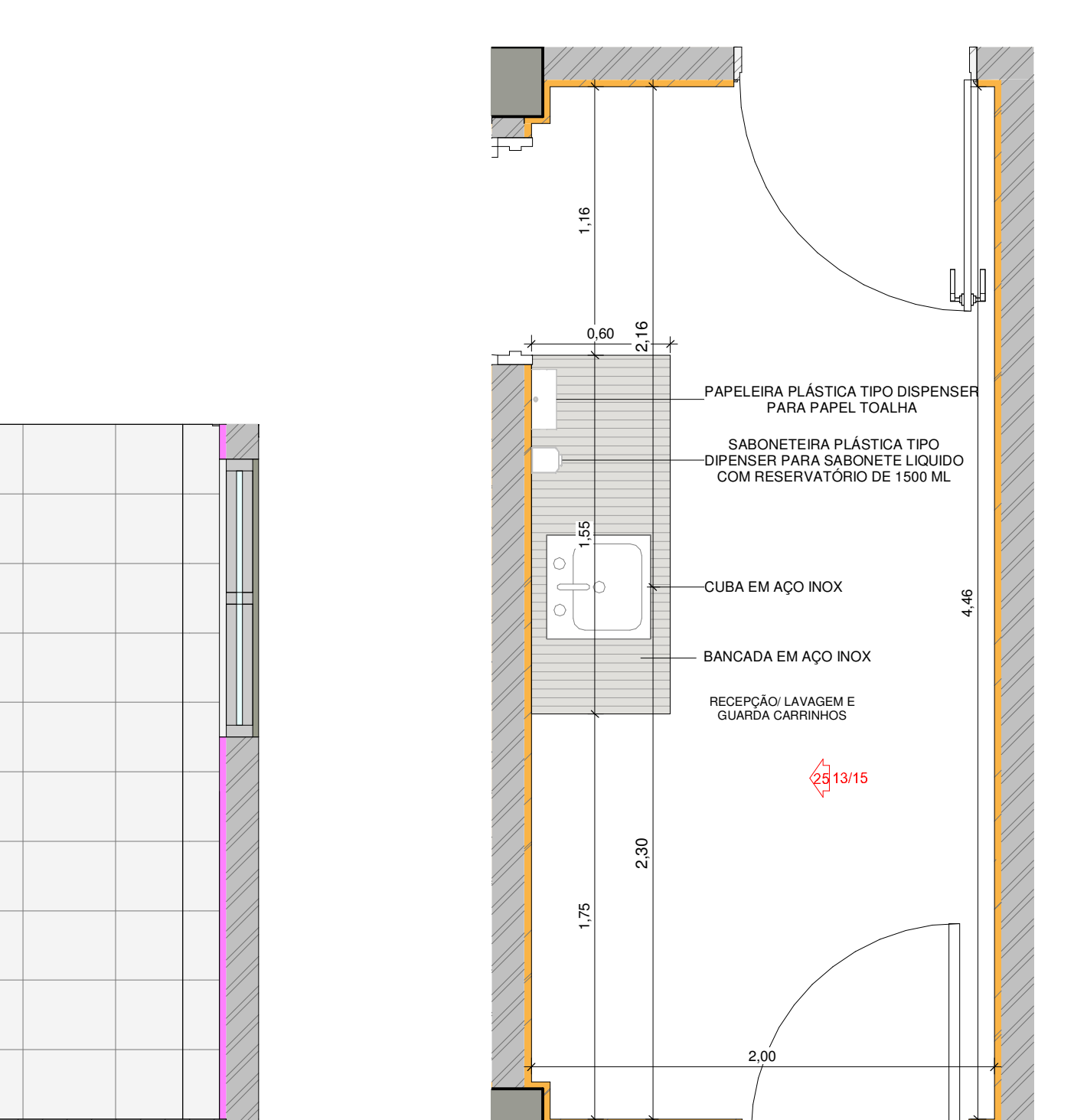
21 DETALHE 1 - I.S PACIENTE MASC
1:25



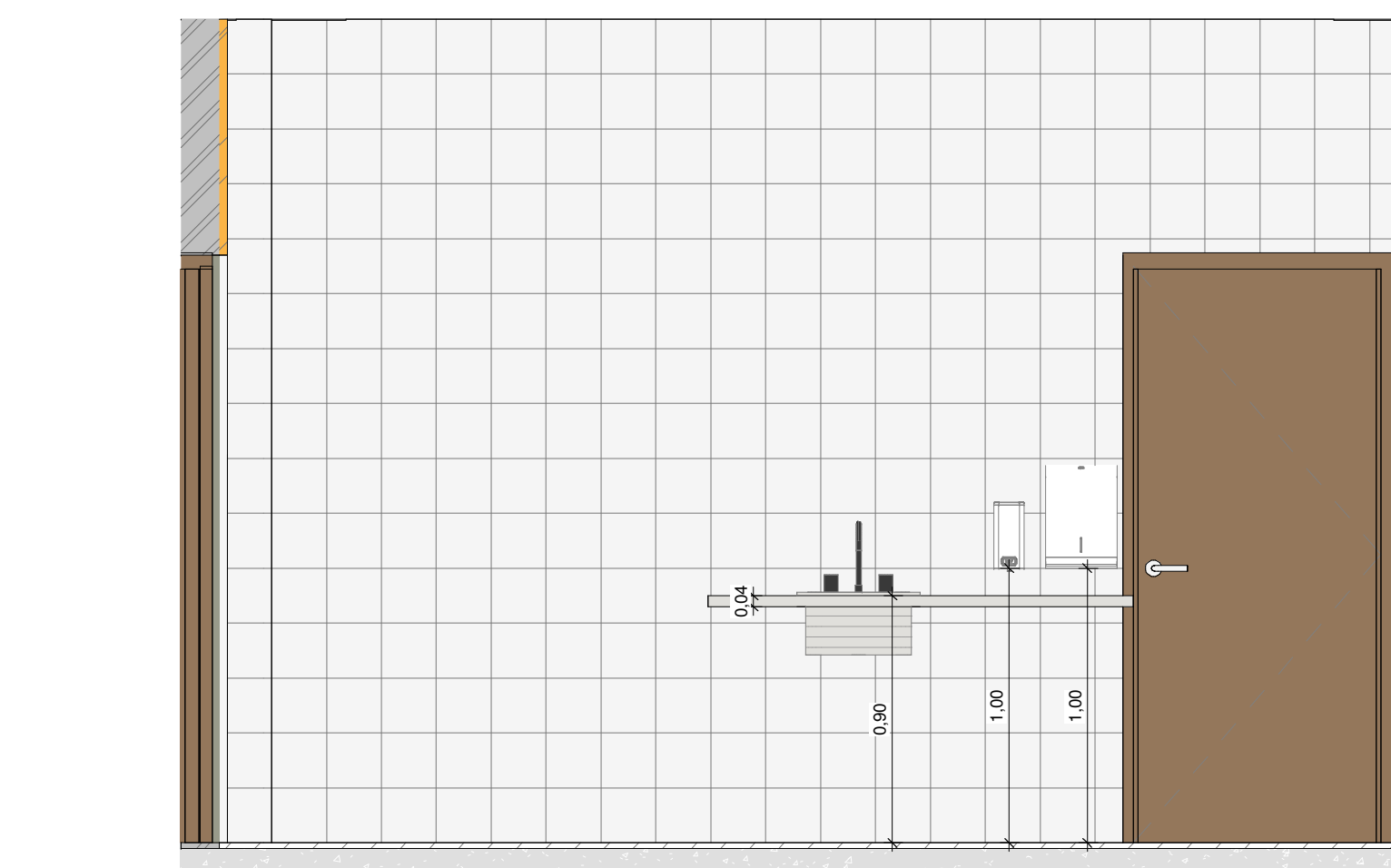
22 DETALHE I.S PACIENTES FEM.
1:25



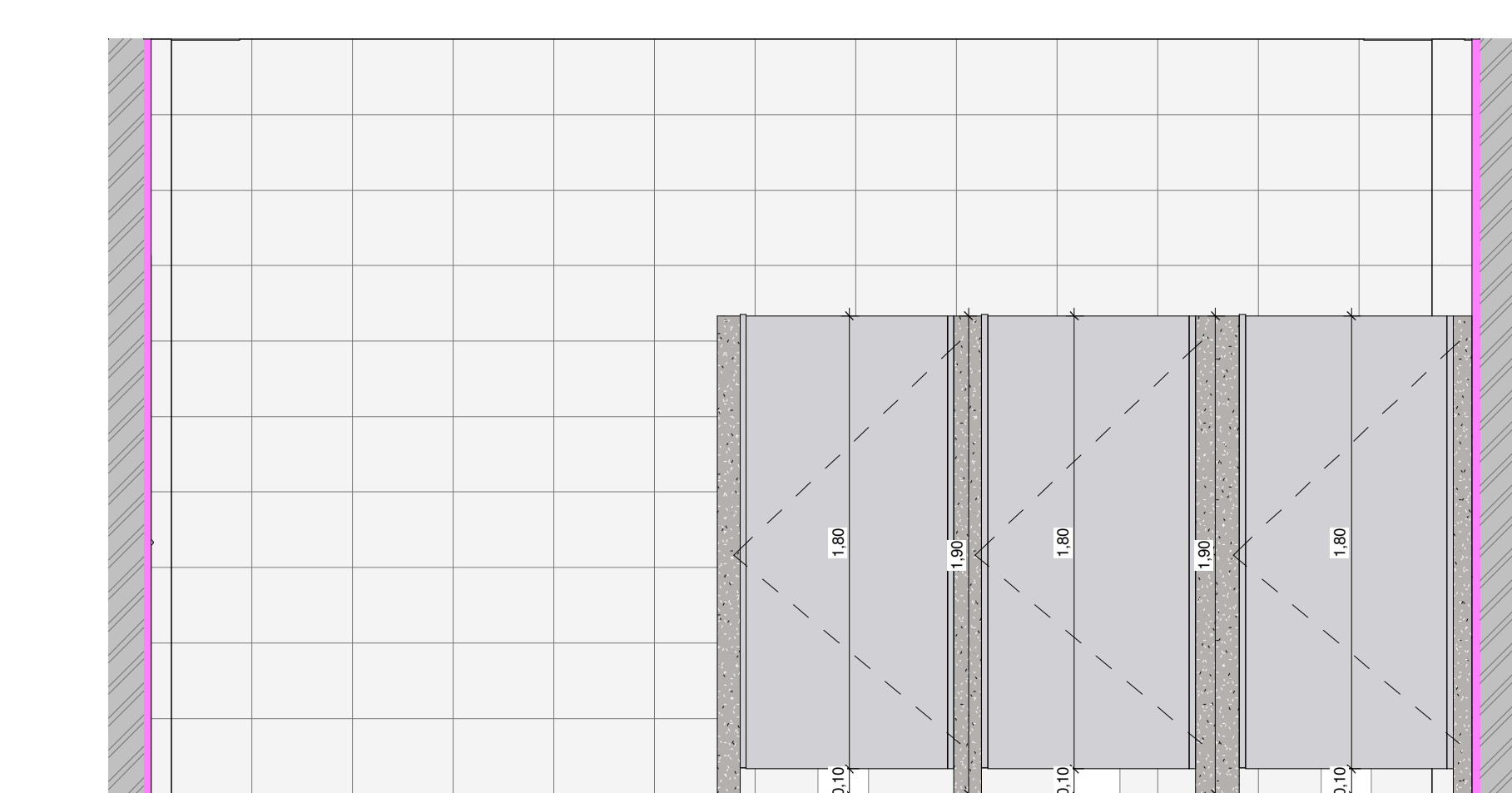
23 DETALHE 1 - I.S PACIENTE FEM.
1:25



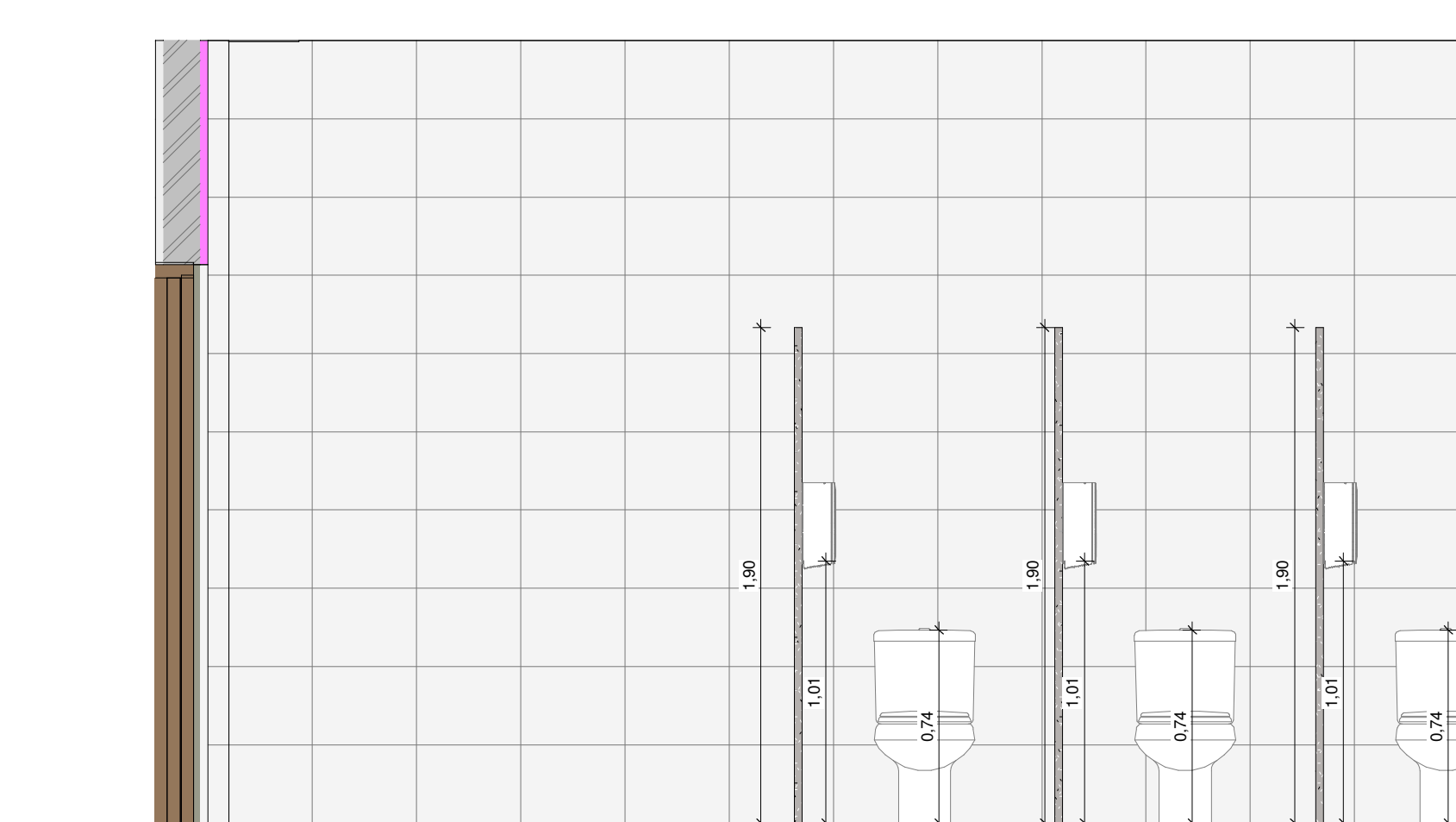
24 DETALHAMENTO RECEPÇÃO E LAVAGEM
1:25



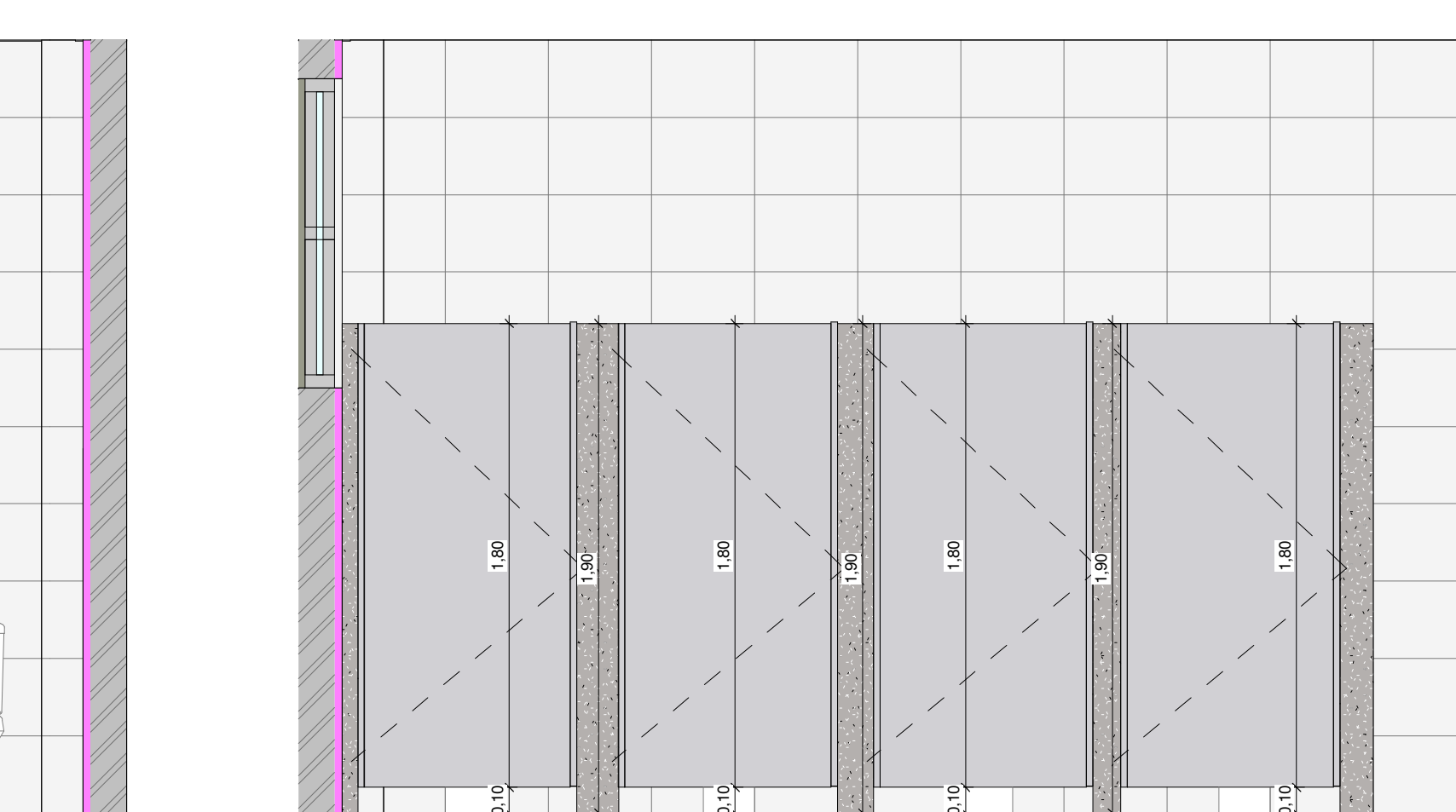
25 DETALHE - RECEPÇÃO E LAVAGEM
1:25



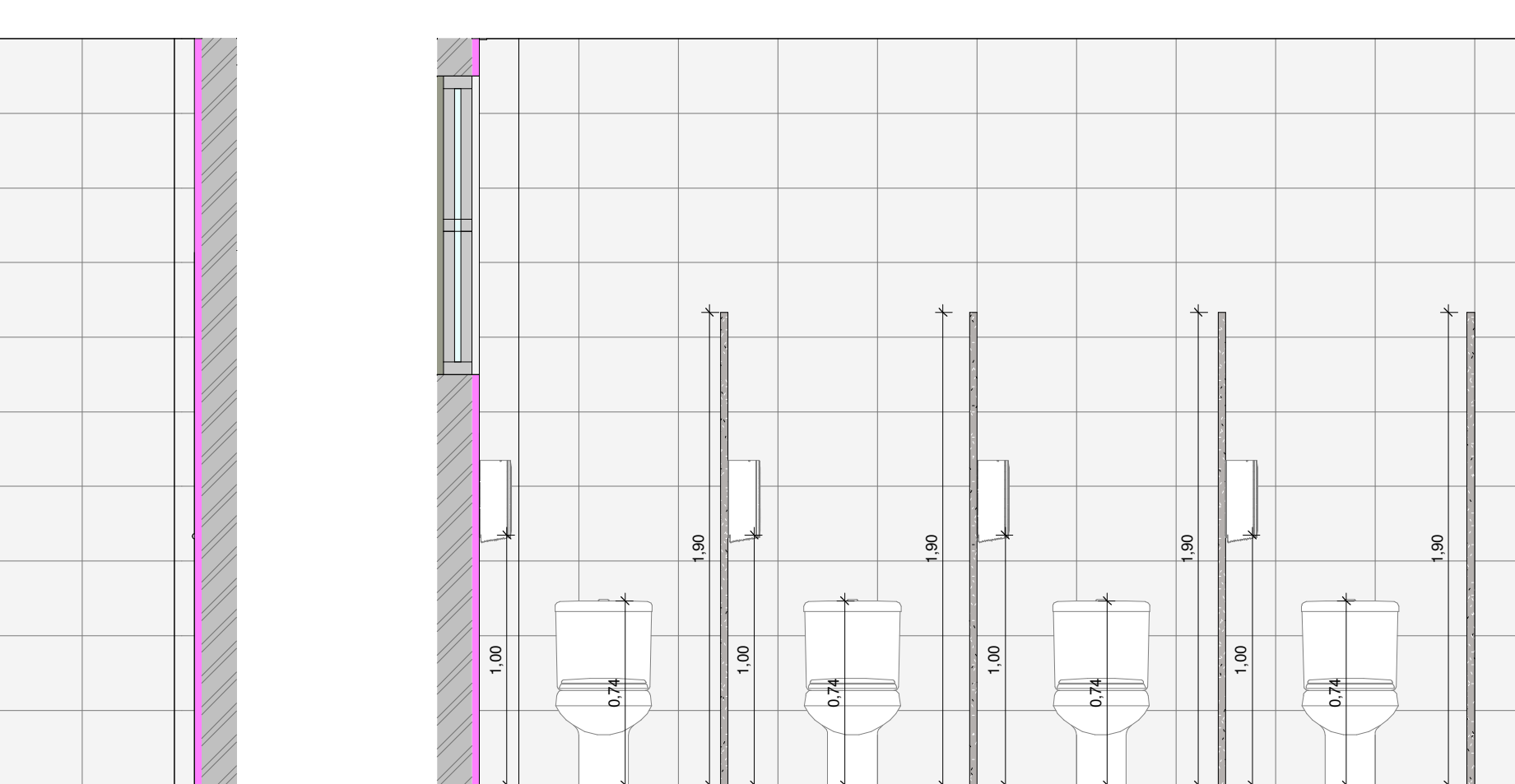
26 DETALHE 2 - I.S PACIENTE MASC
1:25



27 DETALHE 3 - I.S PACIENTE MASC
1:25



28 DETALHE 2 - I.S PACIENTE FEM.
1:25



29 DETALHE 3 - I.S PACIENTES FEM.
1:25

NOTAS:
- MEDIDAS DE NÍVEIS EM METROS;
- VERIFICAR DETALHES CONSTRUTIVOS PERTINENTES NO MEMORIAL DESCRITIVO;
- AS ALTERAÇÕES NESTE PROJETO SOMENTE COM AUTORIZAÇÃO EXPRESSA DA FISCALIZAÇÃO E DA EMPRESA PROJETISTA.

REFERÊNCIAS:
- PLANILHA DE QUANTITATIVOS;
- MEMORIAL DESCRITIVO E ESPECIFICAÇÕES.

REV. 01	20/08/2023	CONFORME SOLICITAÇÃO DA VIOLÊNCIA SANITÁRIA	DAC
REV. 02	28/04/2023	CONFORME SOLICITAÇÃO DA VIOLÊNCIA SANITÁRIA	DAC
REV. 00	31/01/2023	EMISSÃO INICIAL	DAC
REVISÃO:	DATA:	DESCRIÇÃO:	RESP.

Prefeitura Municipal de Pouso Alegre

DAC Engenharia

PROJETO: CONSTRUÇÃO DA UNIDADE DE PRONTO ATENDIMENTO
 RUA PIRANGUINHO, B. SÃO JOÃO, POUSO ALEGRE - MINAS GERAIS

COORDENADOR DE PROJETOS: ALDOIR CARFANO FERREIRA
 RESPONSÁVEL TÉCNICO: ENGR. CIVIL FLÁVIA BARBOSA - CREA MG-187.845/D

FASE DO PROJETO: ARQUITETÔNICO
 TIPO DE PROJETO: EXECUTIVO
 FOLHA Nº: 13/15

DATA FISCAL: 31/01/2023
 ESCALA: INDICADA
 REVISÃO: REV.02
 DAC-PMPA-UPA-PE-ARG-R02-RVT